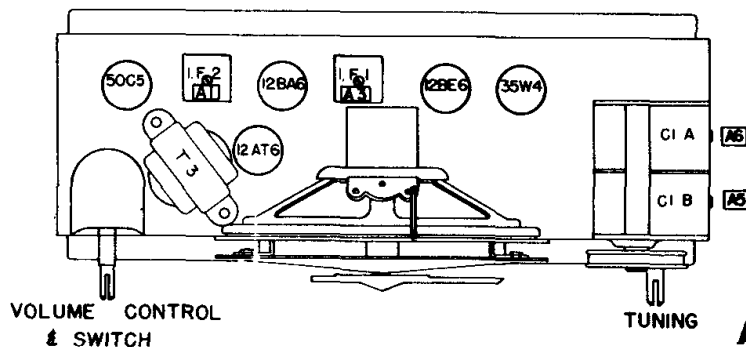
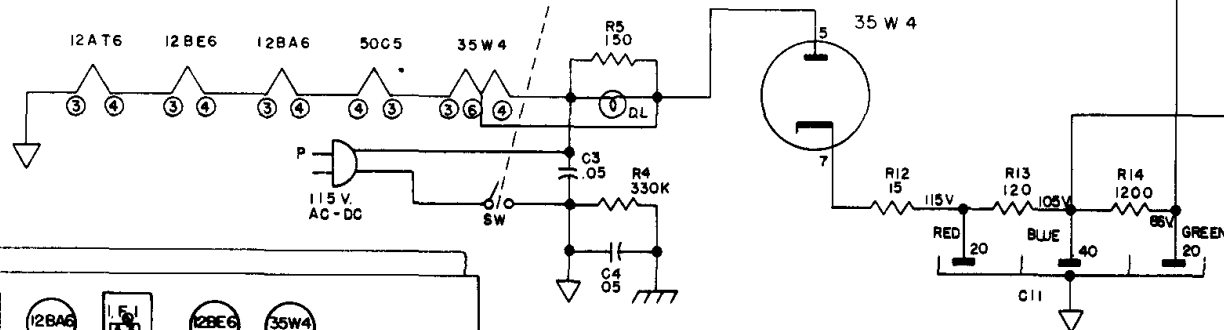


Arvin INDUSTRIES INC.

TUBE SOCKET ARE VIEWED FROM UNDERSIDE OF CHASSIS
VOLTAGE READINGS SHOWN AT SOCKET PRONGS ARE TO
CHASSIS AND ARE TAKEN WITH NO SIGNAL, AC LINE
VOLTAGE AT 117 V. AC. VOLTAGE MEASURED WITH VACUUM
TUBE VOLTMETER.

↓ • COMMON B-
K • INDICATES 1000 OHMS
MEG • INDICATES MEGOHMS
⏏ • GROUND TO CHASSIS
⌒ • CURVED LINE INDICATES OUTSIDE FOIL
P • AC PLUG
SW • POWER SWITCH

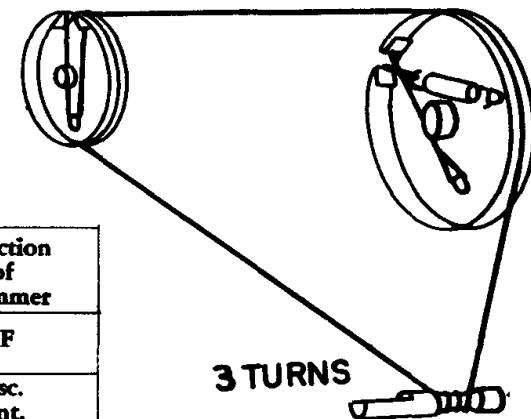


651T

ALIGNMENT PROCEDURE

Position of Variable	Frequency of Generator	Dummy Antenna	Generator Output Connection	Trimmers Adjusted in Order Shown for Maximum Output	Function of Trimmer
Open	455	.05 mfd.	12BE6 Grid (Stator of C1A)	A1, A2, A3, A4	IF
1400	1400		*Test Loop	A5, A6 on Variable Condenser Check Point	Osc. Ant.
600	600		*Test Loop		

*Standard Hazeltine Test Loop Model 1150 or 3 turns of wire about 6" in diameter placed about one foot from the set loop.



STRINGING DIAGRAM