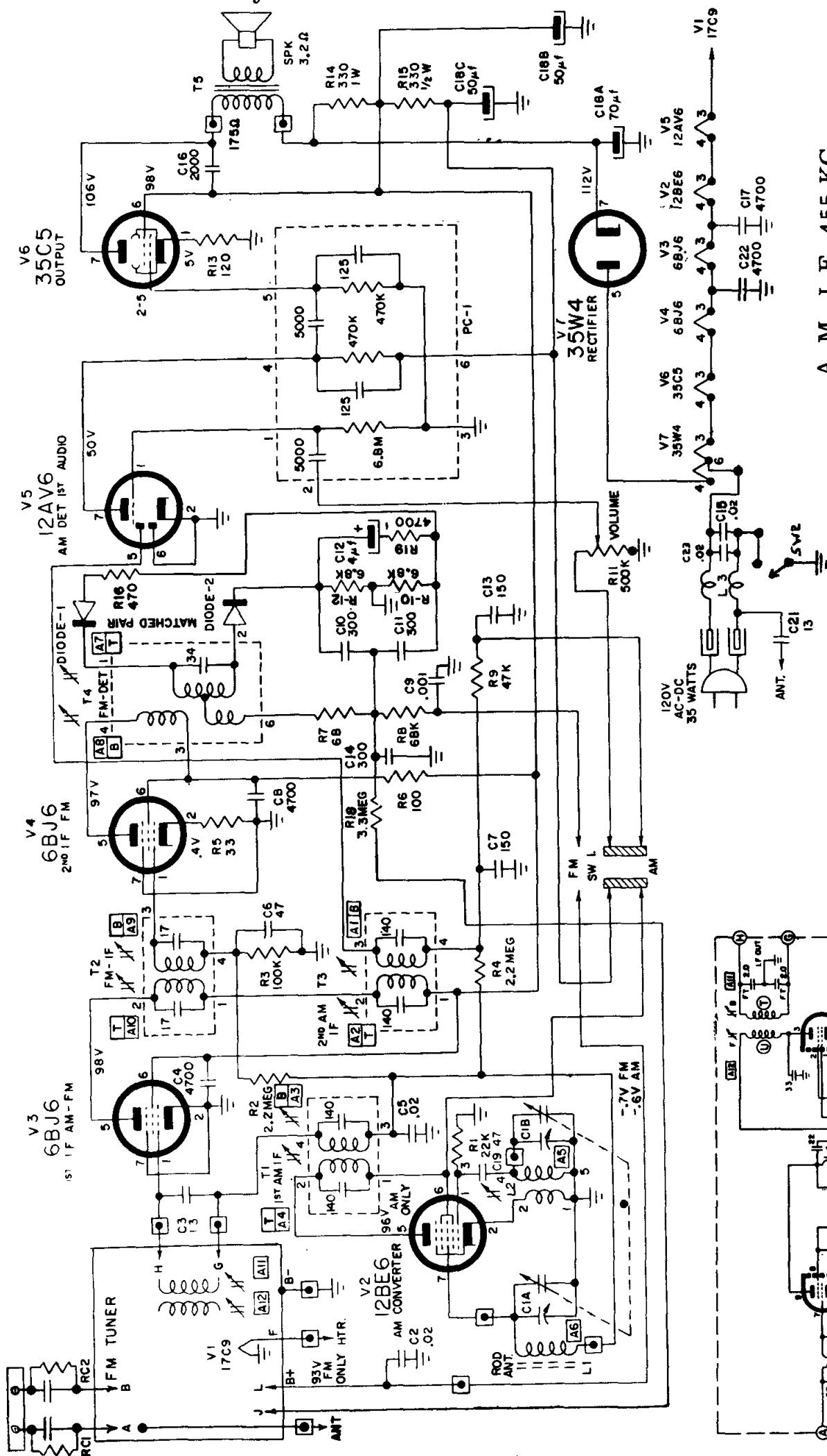
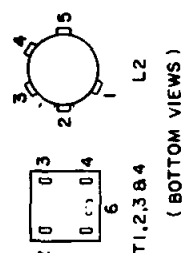


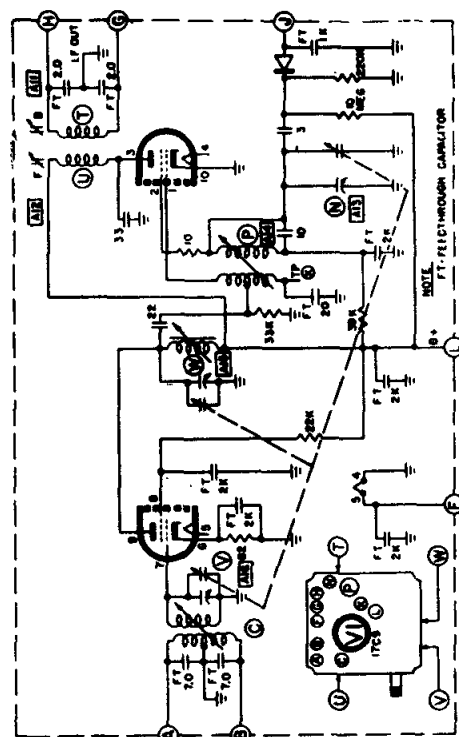
ARVIN Models 33R28, 33R29, Code 1.74301, and Model 43R43, Code 1.78001, which is very similar but includes a tone control and clock timer.



A. M. I. F. 455 KC.  
F. M. I. F. 10.7 MC.



$\frac{1}{2}$  8 -  
[ ] = EXTERNAL CONNECTION TO PRINTED BOARD.  
VOLTAGES MEASURED TO B - WITH A V.T.V.M.  $\pm 20\%$ , NO SIGNAL.  
"M" POSITION UNLESS OTHERWISE NOTED. B+ VOLTAGES SHOULD  
BE APPROX 2 V HIGHER IN AM POSITION.  
RESISTANCE VALUES ARE IN OHMS K=1,000, MEG.=1,000,000.  
CAPACITANCE VALUES LESS THAN ( ) ARE IN MICROFARADS.  
( ) AND VALUES OF ( ) OR GREATER ARE IN MICROMICROFARADS  
( ) UNLESS OTHERWISE INDICATED.



## TUNER SCHEMATIC