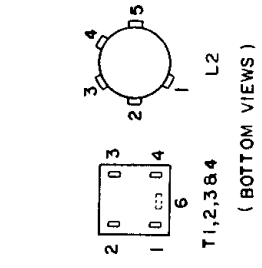
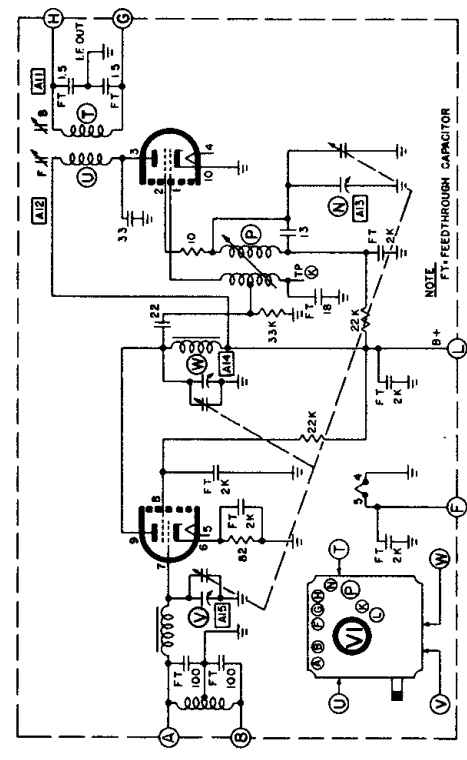


A.M. I.F. 455 KC. F.M. I.F. 10.7 MC.



VOLTAGES MEASURED TO B- WITH A V.T.V.M. $\pm 20\%$, NO SIGNAL.
 FM POSITION UNLESS OTHERWISE NOTED B+ VOLTAGES SHOULD
 BE APPROX. 2V HIGHER IN AM POSITION.
 RESISTANCE VALUES ARE IN OHMS K=1,000, MEG=1,000,000
 CAPACITANCE VALUES LESS THAN (1) ARE IN MICROFARADS
 (μ f), AND VALUES OF (1) OR GREATER ARE IN MICROMICROFARADS
 (μ mf) UNLESS OTHERWISE INDICATED.



MODELS 31R25 - 31R26

CODE 1.64901

TUNER SCHEMATIC