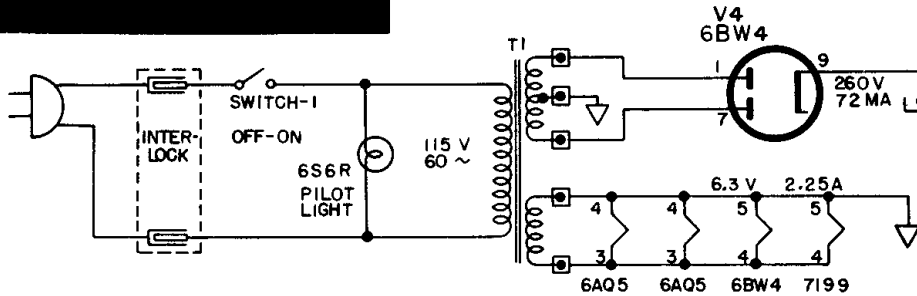
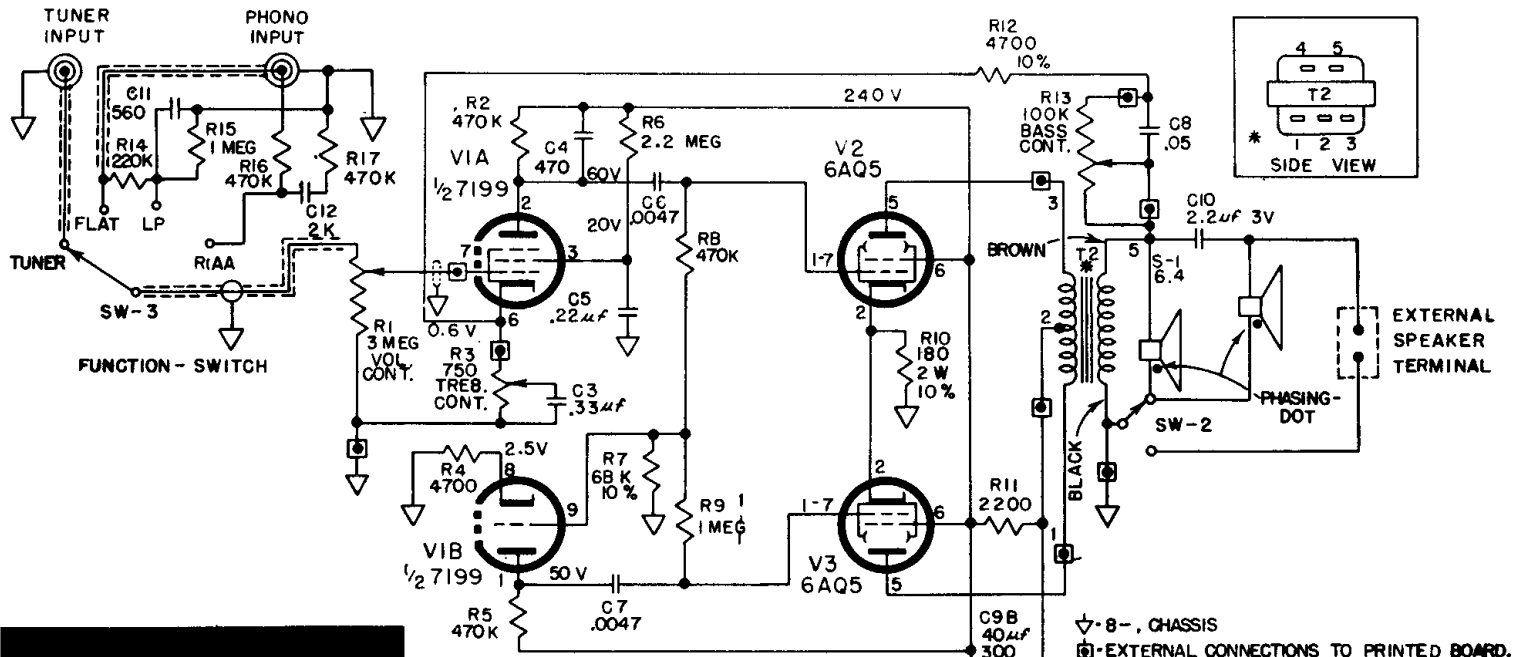
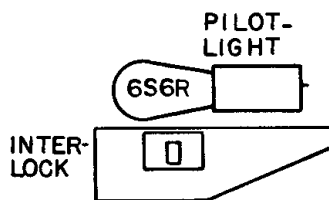
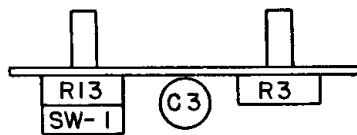


ARVIN Industries Model 1586, Chassis 1.46500



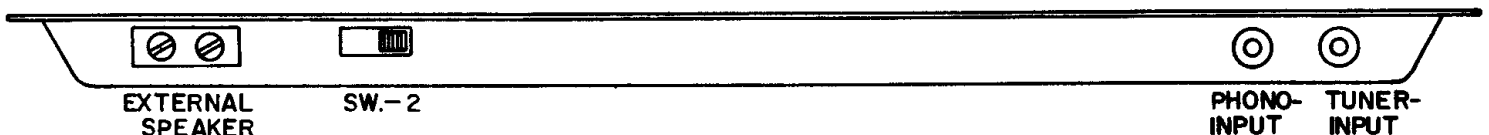
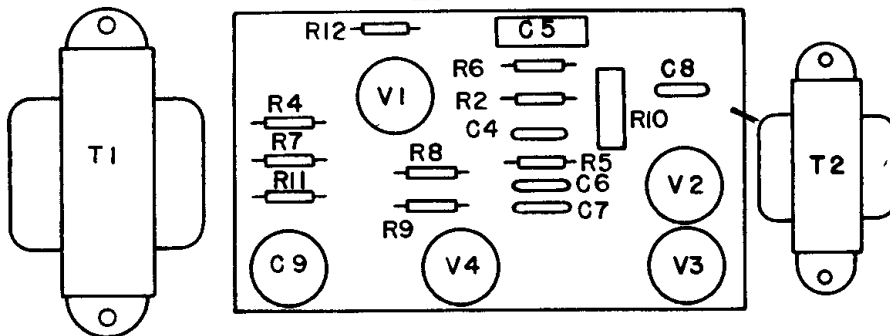
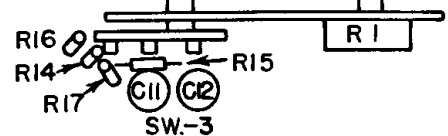
▽ 8 - , CHASSIS
 ⊕ - EXTERNAL CONNECTIONS TO PRINTED BOARD.
 VOLTAGES MEASURED WITH V.T.V.M.
 RESISTANCES MEASURED IN OHMS; K=1,000·
 MEG.=1,000,000.
 RESISTANCES TOLERANCES IS 20 % UNLESS OTHERWISE INDICATED.
 CAPACITANCE VALUES LESS THAN ONE (1) ARE IN MICROFARADS (μF), AND VALUES OF ONE (1) OR GREATER ARE IN MICROMICROFARADS (μμF) UNLESS OTHERWISE INDICATED.
 * CAUTION: WHEN REPLACING T2 CONNECT AS INDICATED FOR CORRECT OPERATION OF FEEDBACK.
 CAUTION: THIS AMPLIFIER IS SET UP SUCH, THAT WHEN A + VOLTAGE IS APPLIED TO THE PHONO INPUT THE SPEAKERS MOVE AWAY FROM THE SPEAKER BASKET SO THAT SPEAKERS ARE IN PHASE WITH COMPANION STEREO UNIT. WHEN REPLACING SPEAKERS OR ANY OTHER PART OF THE CIRCUIT DO NOT ALTER THIS.

OFF-ON BASS TREBLE



FUNCTION SWITCH

VOLUME



SPEAKERS

S-1 5" x 7" P.M. Type 6.4 ohms voice coil
 S-2 4" P.M. Type 6.4 ohms voice coil

Impedance for external speaker 6.4 ohms.