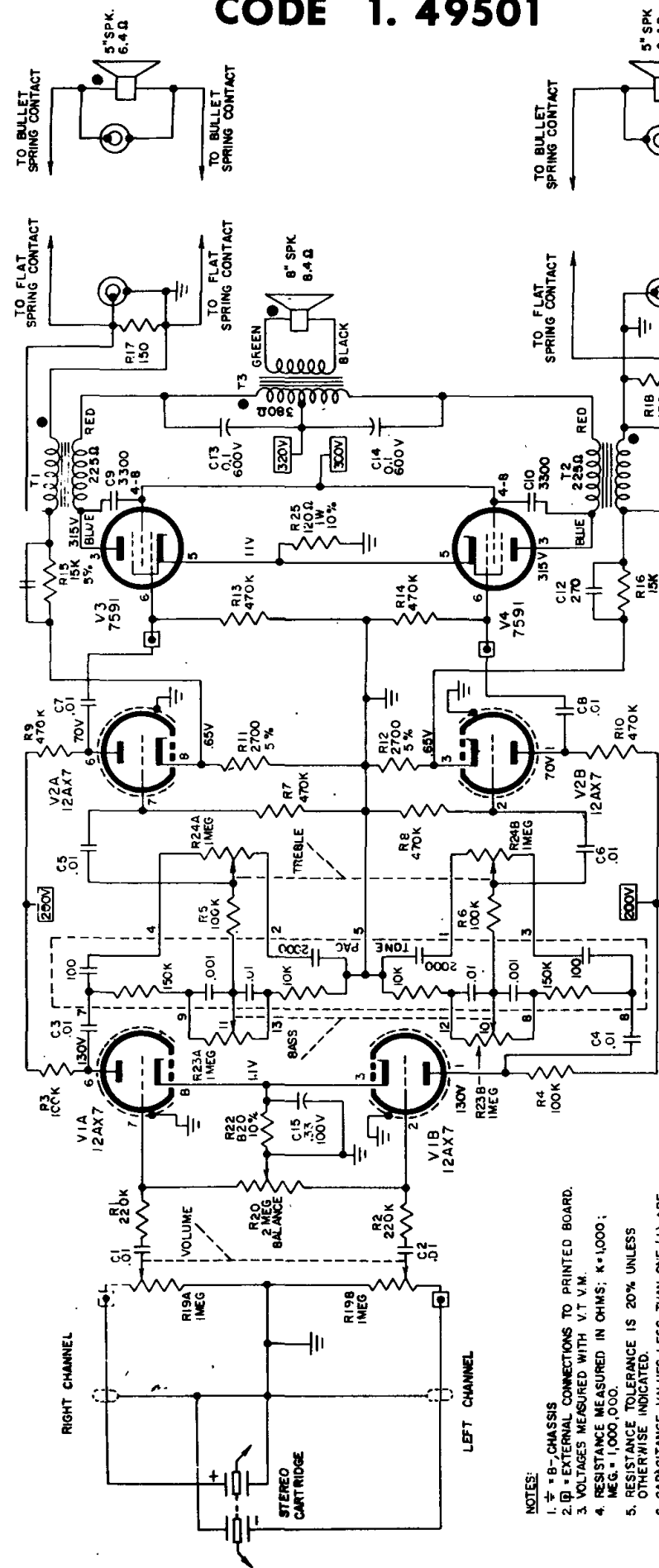


ARVIN PHONOGRAPH

MODEL 90P53

MODEL 90P58

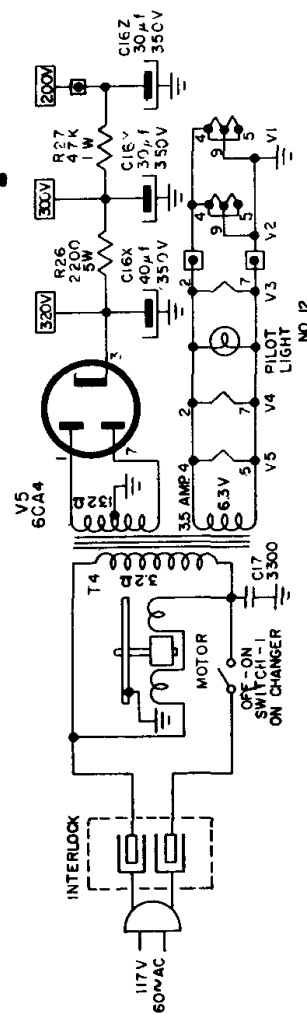
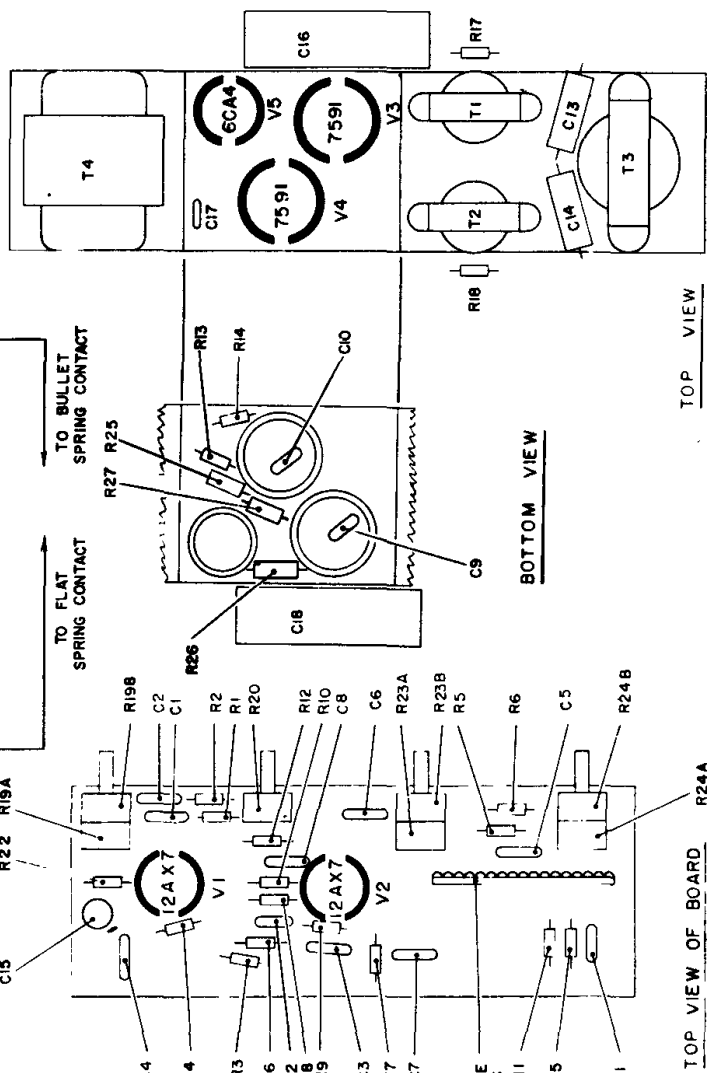
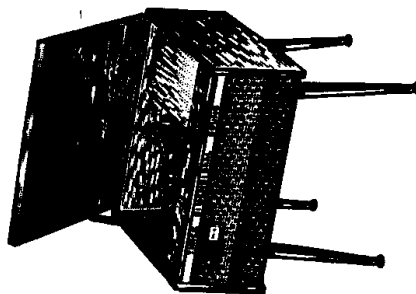
CODE 1. 49501



NOTES:

1. $\frac{1}{2}$ "B"-CHASSIS
2. $\frac{1}{2}$ "B"-EXTERNAL CONNECTIONS TO PRINTED BOARD.
3. VOLTAGES MEASURED WITH V.T. V.M.
4. RESISTANCE MEASURED IN OHMS; K=1,000; M=1,000,000.
5. RESISTANCE TOLERANCE IS 20% UNLESS OTHERWISE INDICATED.
6. CAPACITANCE VALUES LESS THAN ONE (1) ARE IN MICROFARADS (μ F), AND VALUES OF ONE (1) OR GREATER ARE IN MICRO-MICROFARADS ($\mu\mu$ F) UNLESS OTHERWISE INDICATED.
7. COMPONENTS IN THIS AMPLIFIER ARE INTERCONNECTED TO RESULT IN A CONSISTANT PHASE RELATION BETWEEN APPLIED VOLTAGE AND VOICE COIL MOVEMENT (I.E. A POSITIVE INPUT VOLTAGE MOVES VOICE COIL OUTWARD IN RIGHT CHANNEL, INWARD ON LEFT CHANNEL.) DO NOT DISTURB THIS PHASE RELATIONSHIP DURING SERVICING
8. ● PHASING DOT.

TRANSFORMERS T1, T2 (IN PHASE WITH RED LEAD); T3 (IN PHASE WITH GREEN LEAD); SPEAKERS (POSITIVE VOLTAGE MOVES VOICE COIL OUTWARD).



TOP VIEW

BOTTOM VIEW

TOP VIEW OF BOARD

NO 12