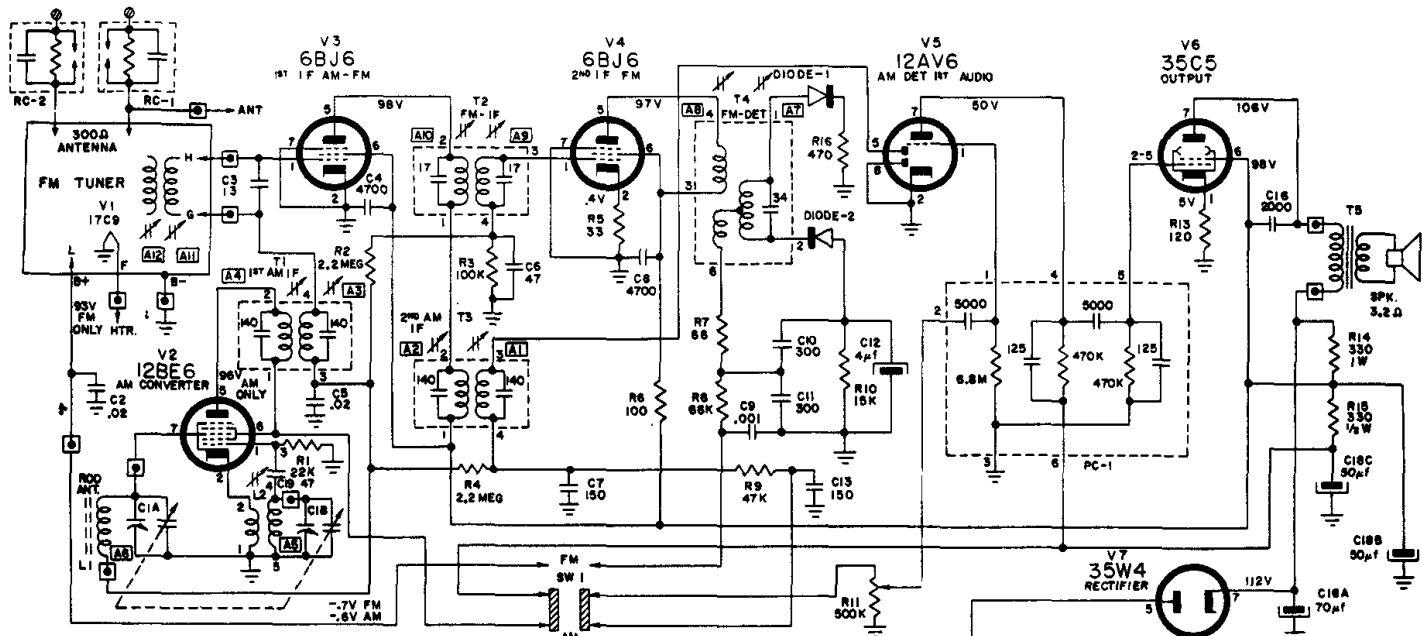


# Arvin

## MODELS 42R25 — 42R29

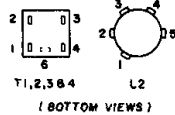
Model 42R77 is electrically identical and has in addition Appliance Outlets.  
Model 42R63 has Outlets, omits Clock, and is electrically identical in circuitry.



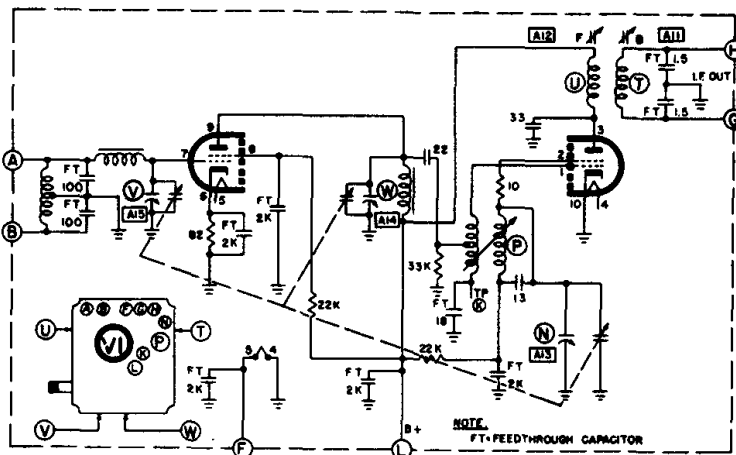
⊕ = B-  
⊞ = EXTERNAL CONNECTION TO PRINTED BOARD.

VOLTAGES MEASURED TO B- WITH A V.T.V.M.  $\pm 20\%$ , NO SIGNAL.  
FM POSITION UNLESS OTHERWISE NOTED B+ VOLTAGES SHOULD BE APPROX 2V HIGHER IN AM POSITION.

RESISTANCE VALUES ARE IN OHMS K=1,000, MEG=1,000,000.  
CAPACITANCE VALUES LESS THAN (1) ARE IN MICROFARADS ( $\mu$ F), AND VALUES OF (1) OR GREATER ARE IN MICROMICROFARADS ( $\mu$ MF) UNLESS OTHERWISE INDICATED.



(BOTTOM VIEWS)



TUNER SCHEMATIC

AM I. F. 455 KC.  
FM I. F. 10.7 MC.

