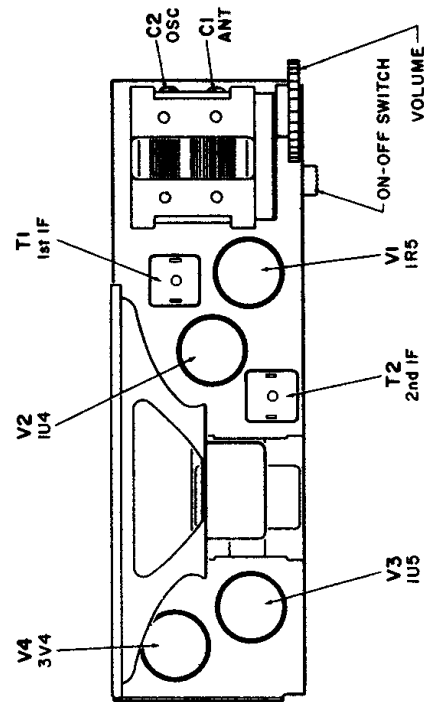
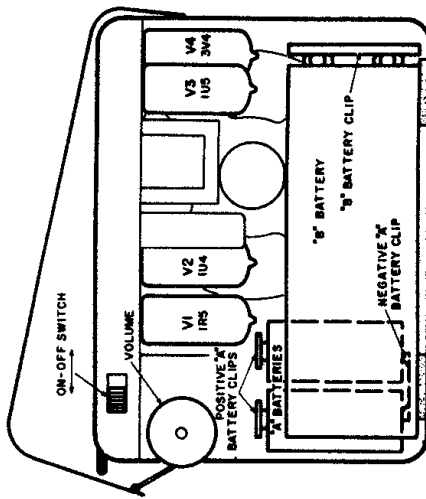
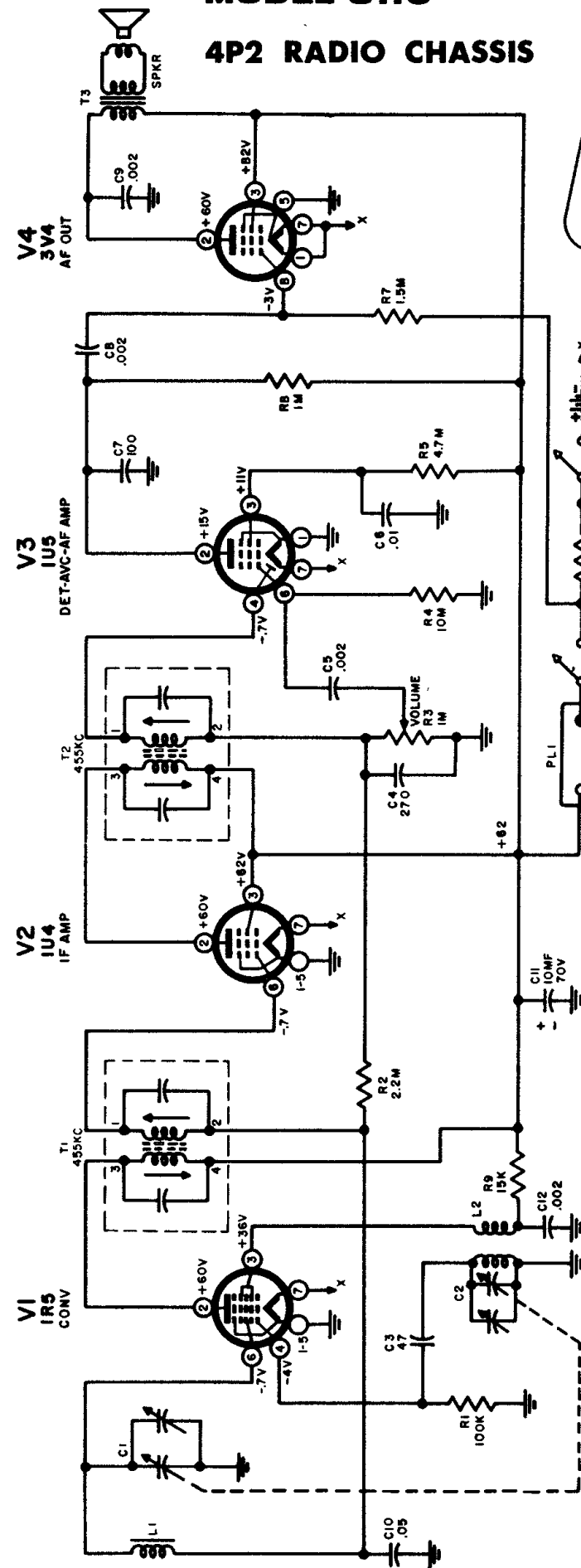


# CBS

## MODEL 5110

### 4P2 RADIO CHASSIS



#### NOTES

1. L-F-455KC
2. Voltage readings taken with VTVM from tube socket terminals to chassis. Turning capacitor set to minimum.
3. Capacitor values less than one are microfarads and values more than one are micro-microfarads, unless otherwise indicated.
4. All resistors are  $\frac{1}{2}$  W, 20%. K = X1,000; M = X1,000,000.

#### Alignment

Step	Signal Generator		Receiver Tuning	Output Meter Connection	Adjust
	Freq.	Connect to			
1	455KC MOD.	Pin 6 of 1U4 thru .05 mf	Minimum capacity	Across voice coil	T2, top and bottom slugs, for maximum reading.
2	As above	Pin 6 of 1R5 thru .05 mf	As above	As above	T1, top and bottom slugs, for maximum reading.
3	1620KC MOD.	As above	As above	As above	C2, oscillator trimmer, for maximum reading.
4	1400KC MOD.	Inductively coupled to Ferrite loop	For maximum signal	As above	C1, antenna trimmer, for maximum reading.