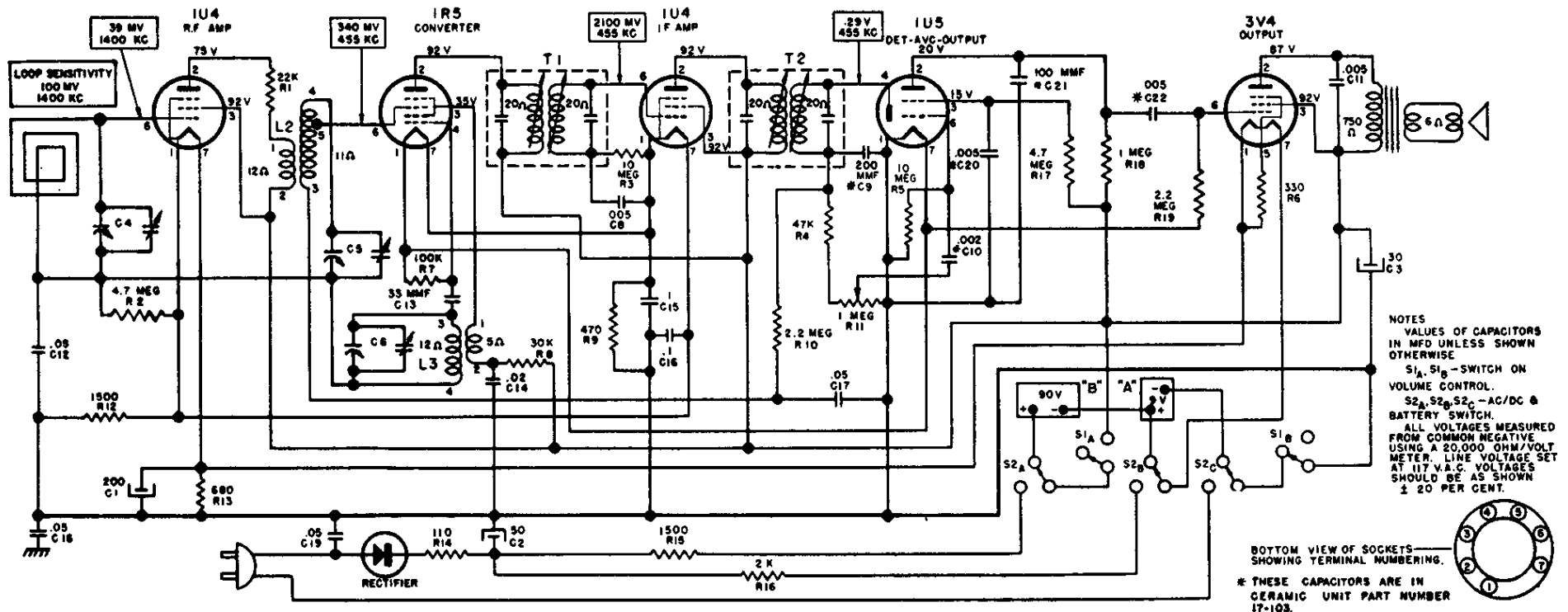
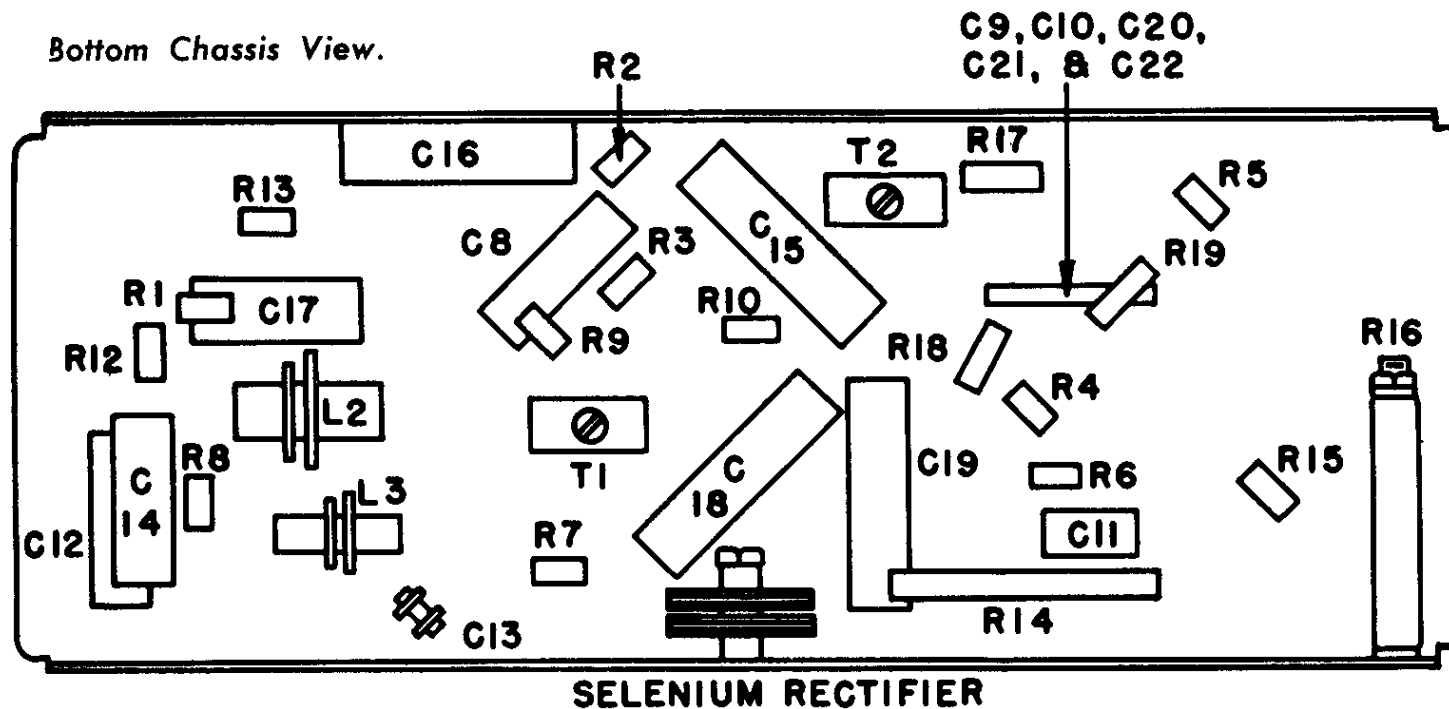


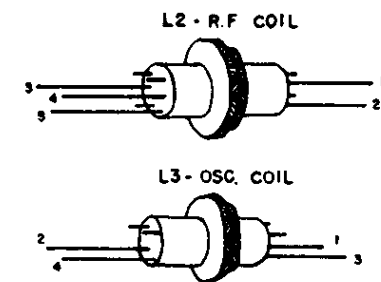
# CORONADO RADIO MODEL 05RA4-43-9876A



Bottom Chassis View.



Sets with the suffix "B" instead of "A", use 1L4 tubes instead of 1U4, and a switch operated by power plug and chassis socket.



# HALLICRAFTER RADIO MODELS 5R11, 5R12, 5R13, 5R14

## ALIGNMENT PROCEDURE

The alignment should be made with volume control fully on, and the output from the signal generator as low as possible, to prevent AVC action from interfering with proper alignment.

With the output meter connected across the voice coil of the speaker, the output meter reading for 50 milliwatts is 0.4 volts, using a signal which is modulated 400 c.p.s.

Adjust all trimmers for maximum output. Repeat the alignment procedure given below as a final check.

CAUTION: This is an AC/DC receiver, and when aligning the set it is necessary to isolate the signal generator or the receiver from the line by use of a transformer, or to place a .2 MFD condenser in each test lead of the signal generator.

SIGNAL GENERATOR			POSITION OF VARIABLE	ADJUST FOR MAXIMUM OUTPUT
Frequency	Dummy Antenna	Connection to Radio		
455 KC	.1 MFD	12BE6 Grid Stator VCA	Fully Open	T1 & T2
1625 KC		12BE6 Grid Stator VCA	Fully Open	VCB Oscillator
1400 KC	.1 MFD	Loosely Coupled to Loop	Tune in Signal Generator	VCA Antenna

Connect low side of signal generator to common negative.

