

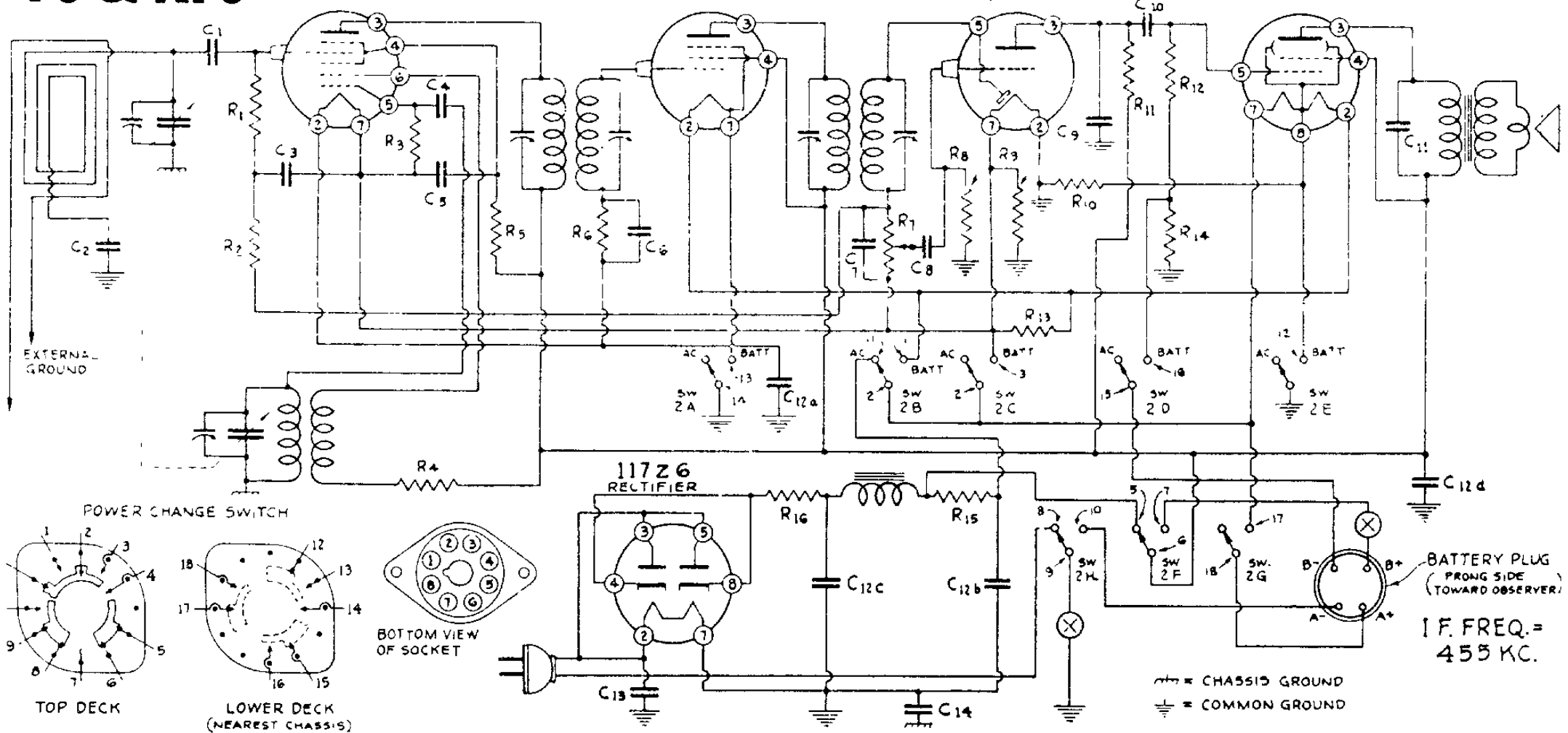
F5 & XF5

1A7
1ST DET & OSC

1N5
1ST I F AMP

1H5
2ND DET, AVC & AFD

3Q5
POWER OUTPUT



No.	Ohms	Watts	No.	Ohms	Watts	No.	Capacity (Mfd.)	Volts	No.	Capacity (Mfd.)	Volts
R1	1,000,000	1/2	R9	110	1/2	C1	.00025	Mica	C10	.01	400
R2	1,000,000	1/2	R10	750—10%	1/2	C2	.1	200	C11	.002	400
R3	200,000	1/2	R11	250,000	1/2	C3	.01	200	C12a	40.	25
R4	500	1/2	R12	1,000,000	1/2	C4	.0005	Mica	C12b	40.	25
R5	30,000	1/2	R13	400	1/2	C5	.05	200	C12c	30.	150
R6	5,000,000	1/2	R14	450—10%	1/2	C6	.01	200	C12d	30.	150
R7	1,000,000	V.C.	R15	2,100	5	C7	.00025	Mica	C13	.05	400
R8	5,000,000	1/2	F16	30	1/2	C8	.01	400	C14	.25	200
						C9	.00025	Mica			

In Model F5 switch points 4, 15, 16, 17 and 18 are not used. Switch points 4 is also not used on Model XF5. Power change switch 2A thru 2H and the pictorial view shown in the "AC-DC" position.

In late models C2 is not used.