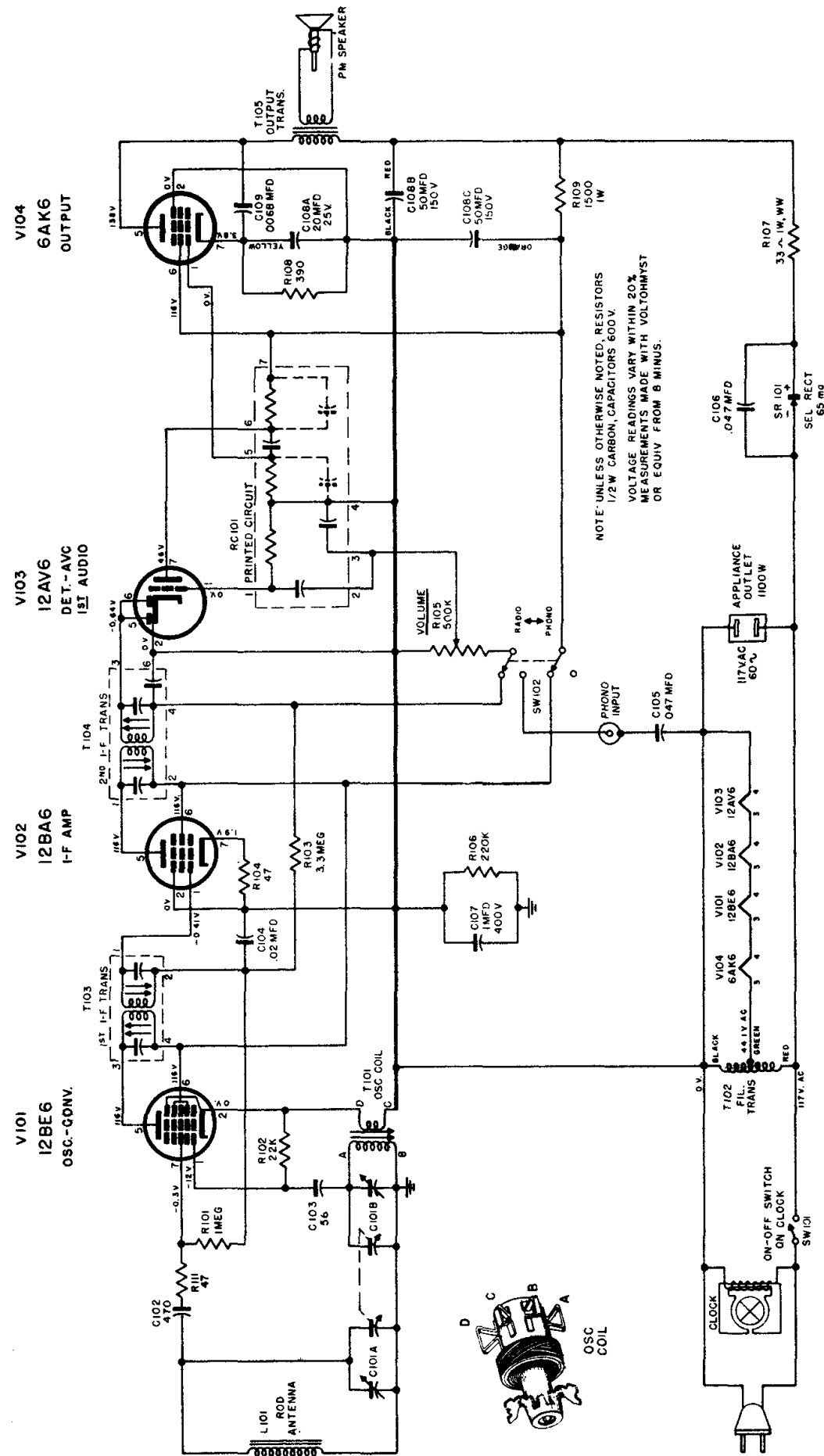


Capehart

CAPEHART-FARNSWORTH COMPANY

MODEL
C-14

RADIO CHASSIS
CR-93



ALIGNMENT

Equipment Required:

1. Calibrated R.F. Signal Generator (Signal from 455KC to 1620KC).

2. Low Range Output Meter.

Alignment:

- Turn set on, adjust volume to maximum.
- See that dial pointer coincides with calibration marks at extremes of dial scale.
- Connect output meter across the speaker voice coil.

Step	Set Generator	Set Gang	Connect Generator	Adjust	To Obtain
1	455KC	Fully Open	Pin 1 V102	T104 (Top & Bottom)	Maximum
2	"	"	Across Rod Ant.	T103 (Top & Bottom)	"
3	1620KC	Fully Open	Across Rod Ant.	Oscillator Trimmer	"
4	537KC	Closed	"	T101	"
5	1500 KC	1500KC	Loosely Couple To Rod Ant.	Antenna Trimmer	"