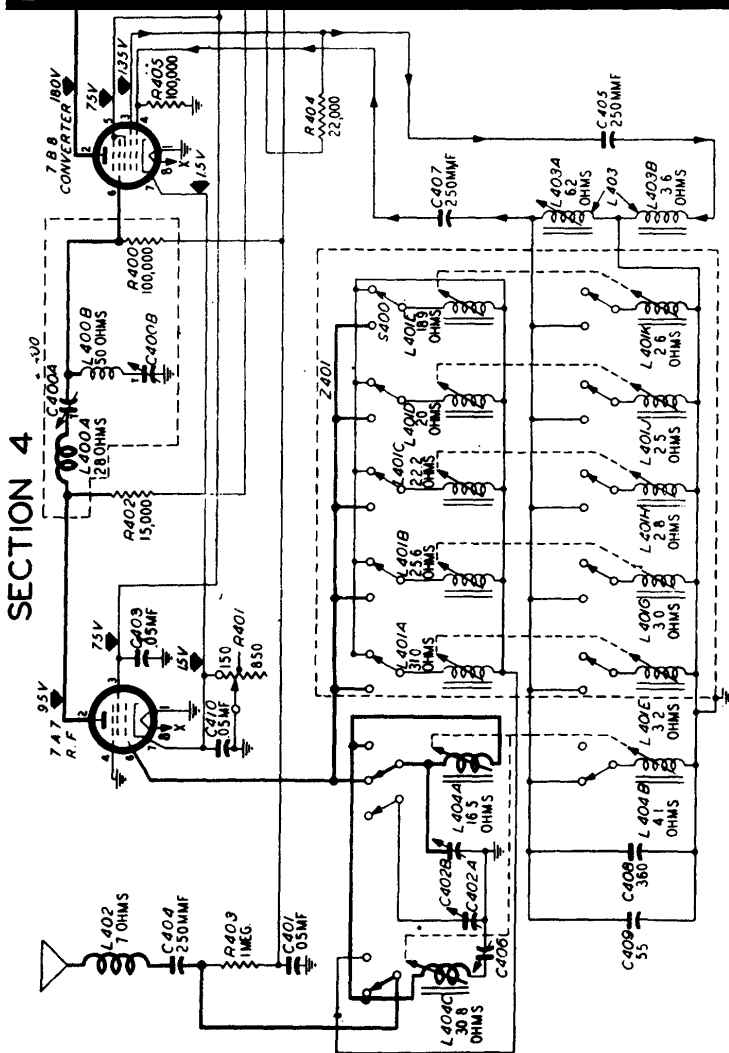


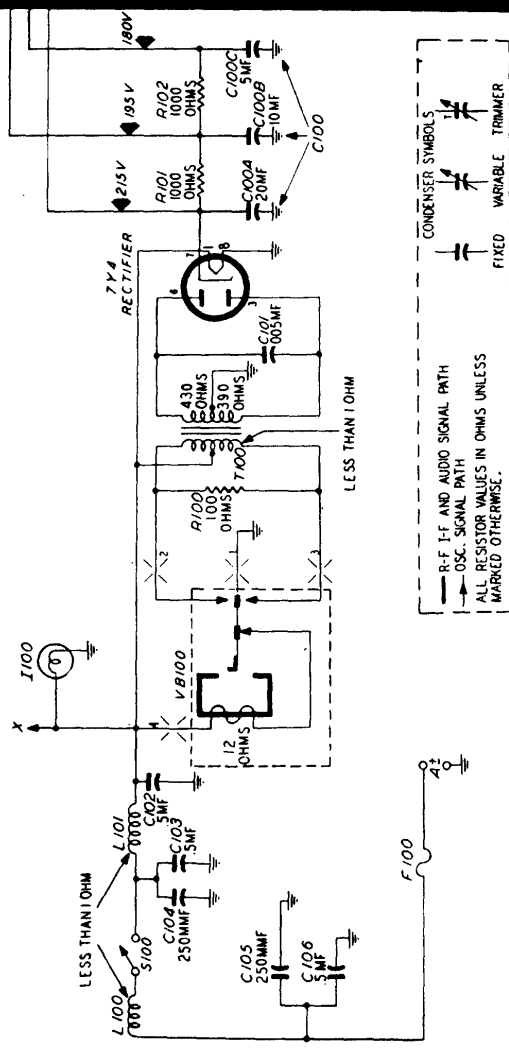
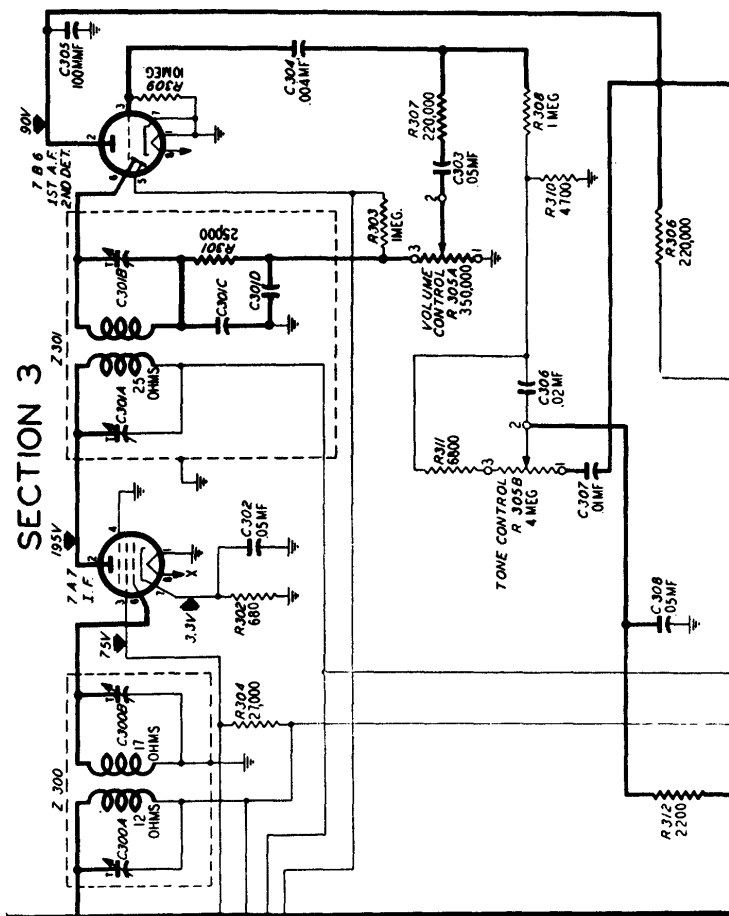
CHRYSLER-PHILCO AUTO RADIO, MODEL C4608

MOPAR MODEL 802

SECTION 4



SECTION 3



SECTION 1

SECTION 2

NOTE: All voltage, capacity, and resistance values shown are average. The voltages between B- (chassis) and other points indicated were measured with a 20,000 ohms-per-volt meter, with the volume control at minimum and the tuning control at 550 kc.

INTERMEDIATE FREQUENCY455 kc.