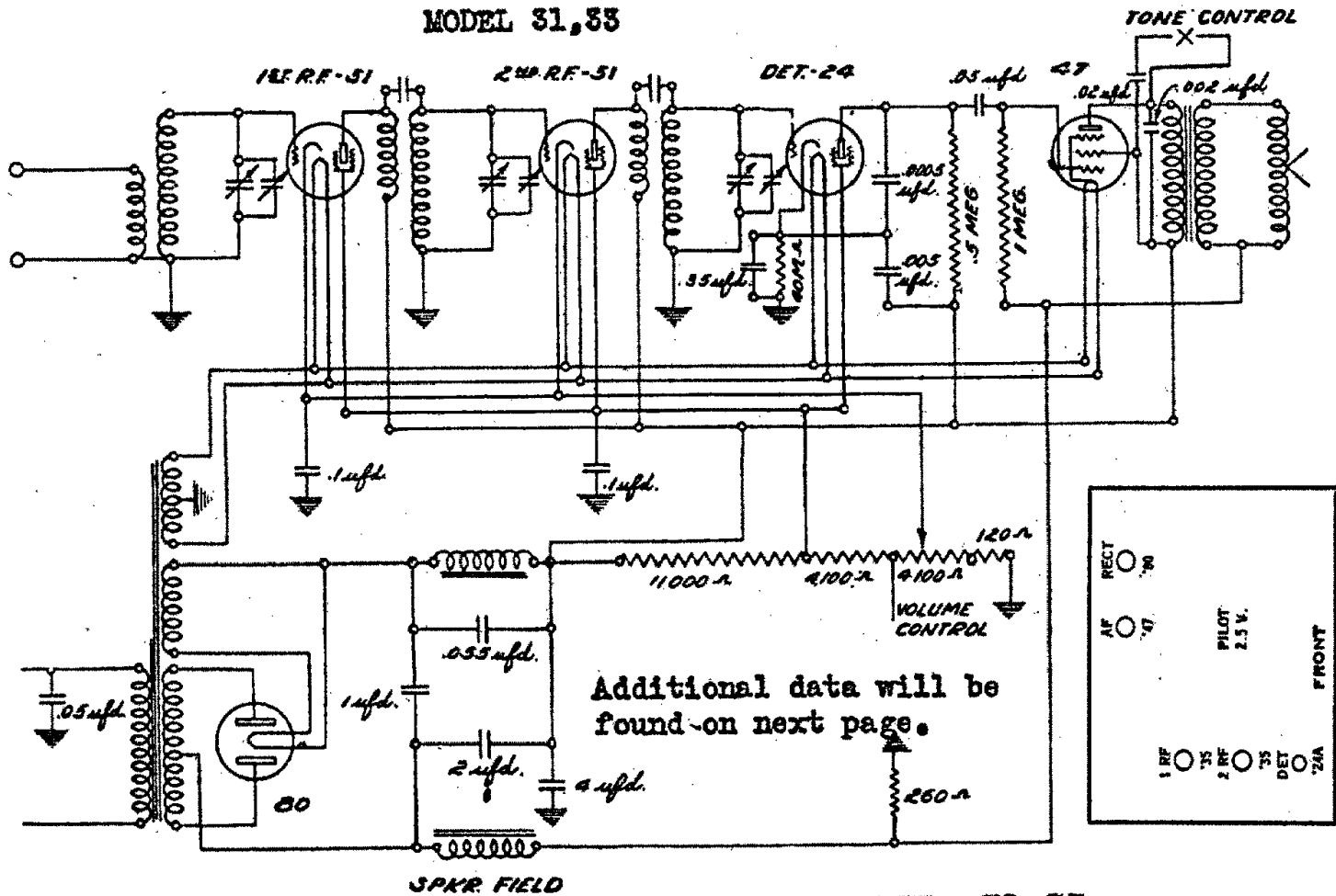
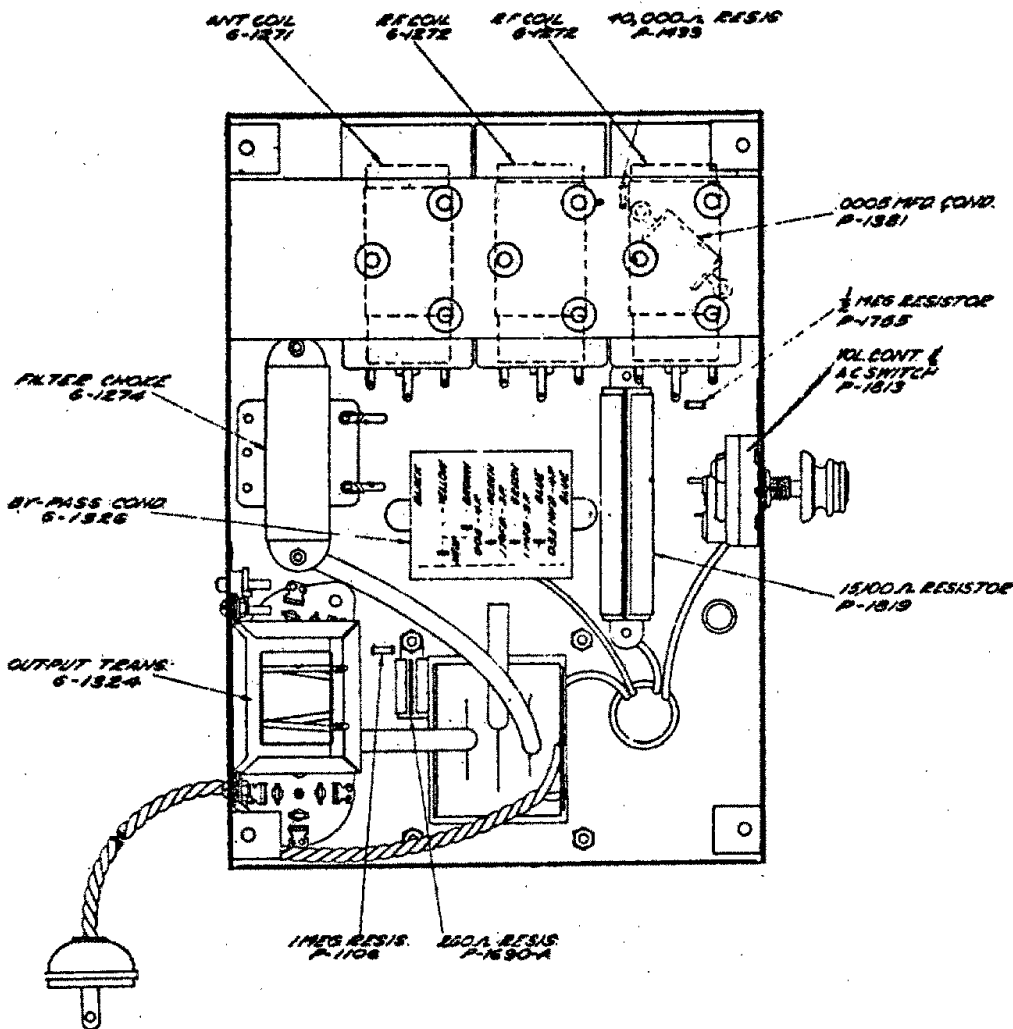


# COLUMBIA PHONOGRAPH COMPANY

## MODEL 31,33



## MODEL 31-33



VOLTAGE ANALYSIS  
READINGS TAKEN WITH WESTON MODEL 565 ANALYZER

No.	Stage	Type Tube	Fil. Volts	Plate Volts	Cont. Grid Volts	Cath. Volts	S. G. Volts	I <sub>p</sub> Normal
1	1st R. F.	C. L. 51	2.1	225	2.1	2	75	5
2	2nd R. F.	C. L. 51	2.1	230	2.2	2	75	4.5
3	Det.	C. L. 24	2.1	160*	7	7.5	75	.02
4	Output	C. L. 47	2.1	215	5*	0	225	26.5
5	Rect.	C. L. 80	4.8	280				130

\*Reading dependent upon resistance of meter.

†Reading taken for one anode only; 60 milliamperes would be about correct. Volume control position full. Line voltage 115—60 cycle.