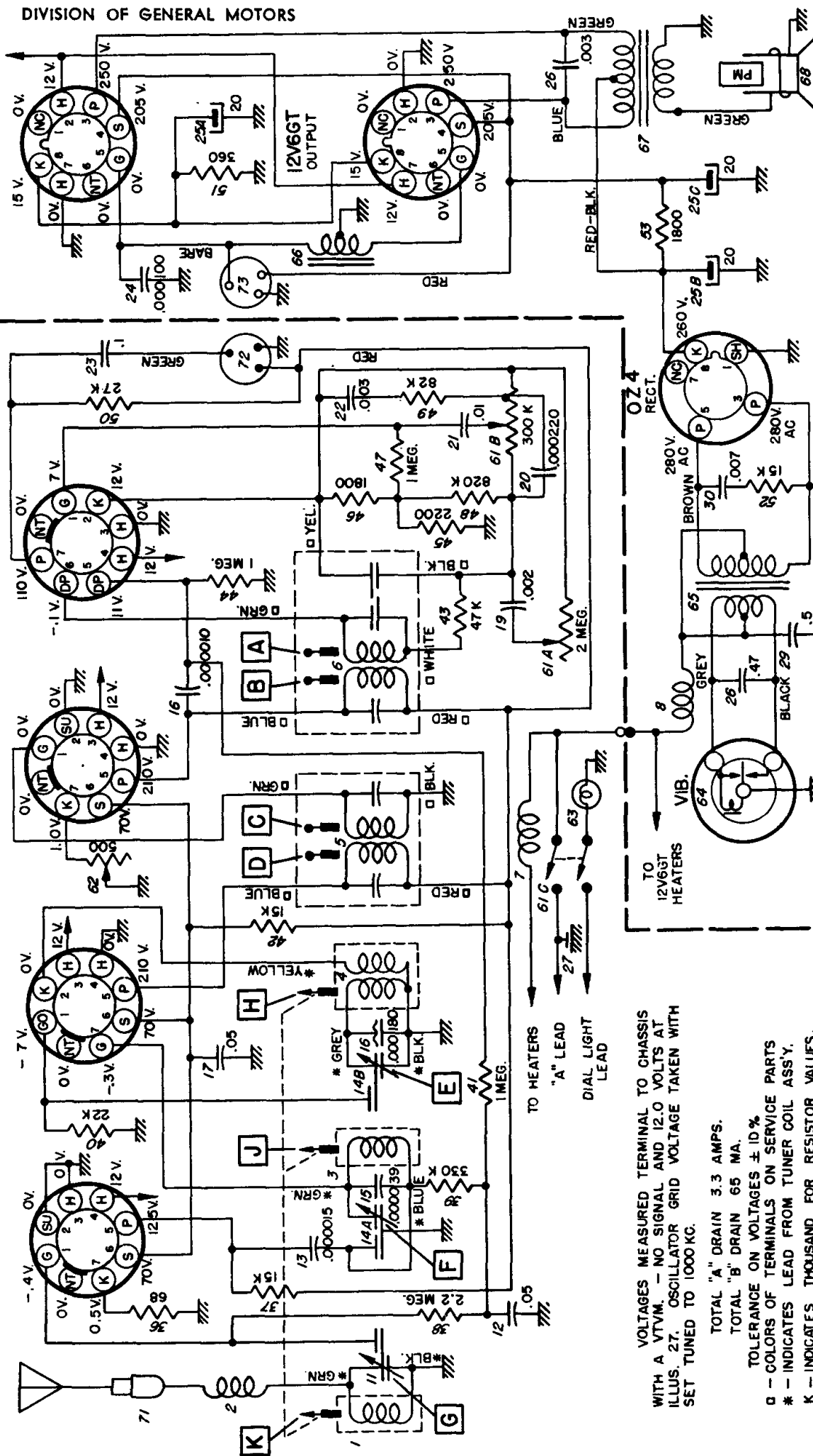


UNITED MOTORS

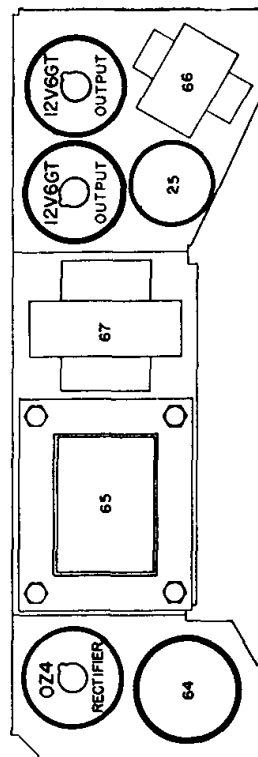
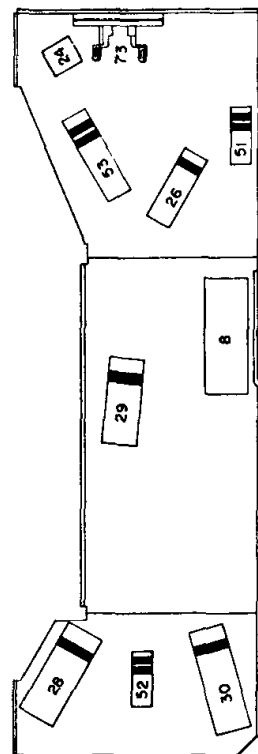
Chevrolet Model 987087

DIVISION OF GENERAL MOTORS



VOLTAGES MEASURED TERMINAL TO CHASSIS WITH A VTVM. — NO SIGNAL AND 12.0 VOLTS AT 1000 KC. 27. OSCILLATOR GRID VOLTAGE TAKEN WITH SET TUNED TO 1000 KC.

TOTAL "A" DRAIN 3.3 AMPS.
TOTAL "B" DRAIN 65 MA.
TOLERANCE ON VOLTAGES $\pm 10\%$
Q - COLORS OF TERMINALS ON SERVICE PARTS
* - INDICATES LEAD FROM TUNER COIL ASSY.
K - INDICATES THOUSAND FOR RESISTOR VALUES.

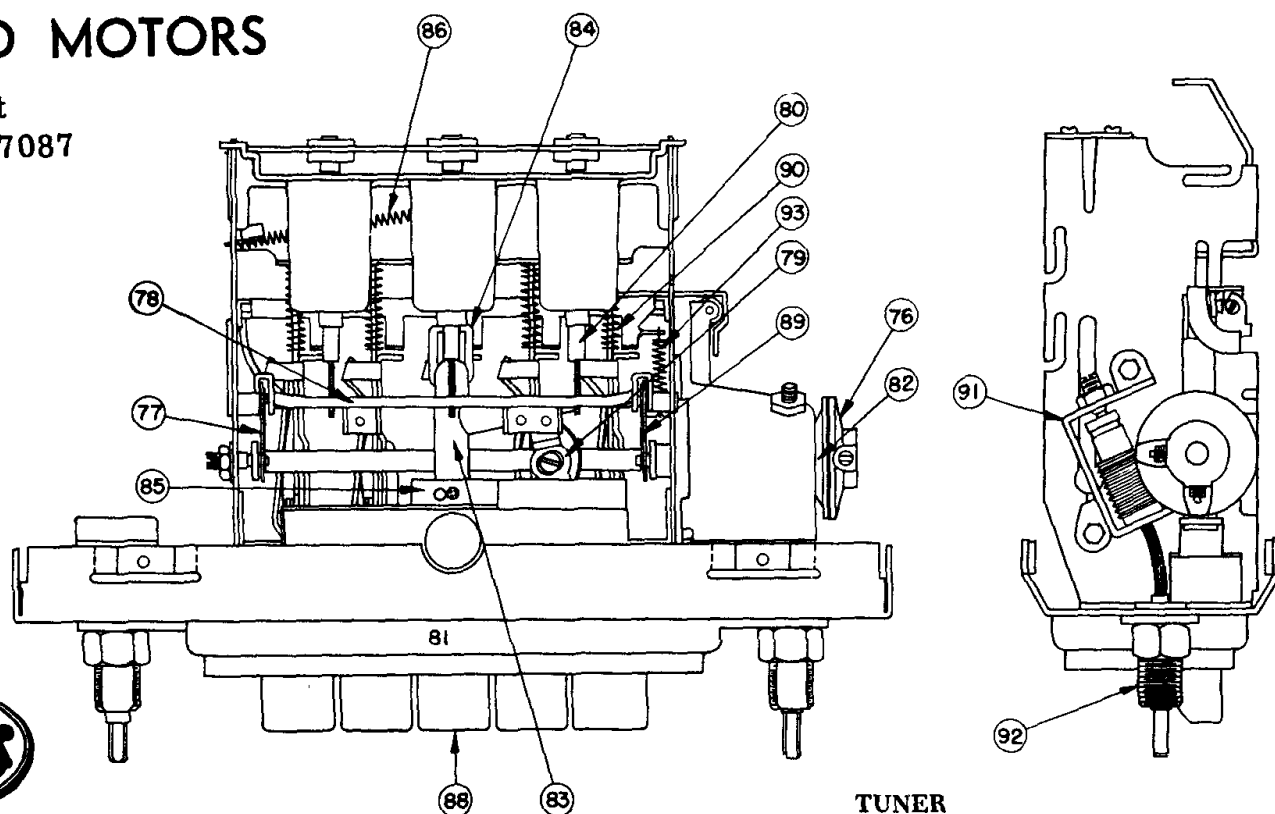


PARTS LAYOUT — TUBE VIEW (POWER SUPPLY)

PARTS LAYOUT — CHASSIS VIEW (POWER SUPPLY)

UNITED MOTORS

Chevrolet
Model 987087



TUNER

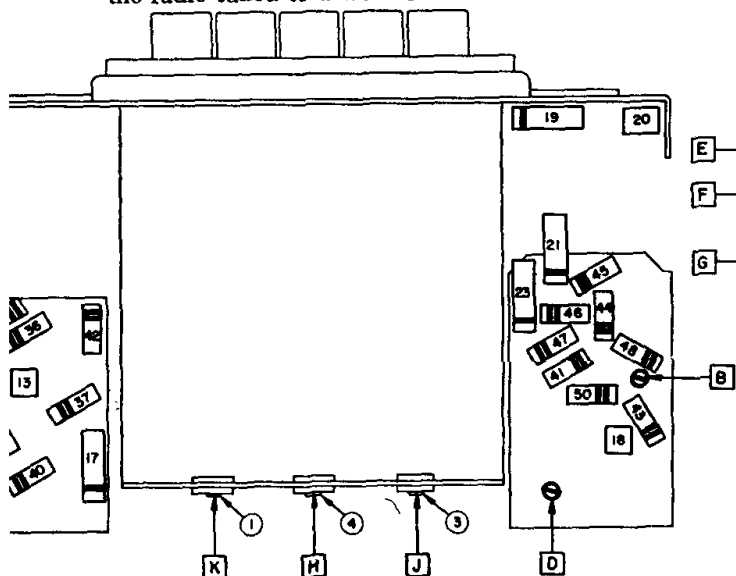
ALIGNMENT PROCEDURE

Steps	Series Capacitor or Dummy Antenna	Connect Signal Generator to	Signal Generator Frequency	Tune Receiver to	Adjust in Sequence For Max. Output
1	0.1 Mfd.	12BE6 Grid (Pin #7)	262 KC	High Frequency Stop	A, B, C, D
2	0.000082 Mfd.	Antenna Connector	1615 KC	High Frequency Stop	*E, F, G
3	0.000082 Mfd.	Antenna Connector	1000 KC	Signal Generator Signal	J, K
4	0.000082 Mfd.	Antenna Connector	1615 KC	High Frequency Stop	F, G
5	0.000082 Mfd.	Antenna Connector	900 KC	Signal Generator Signal	L**

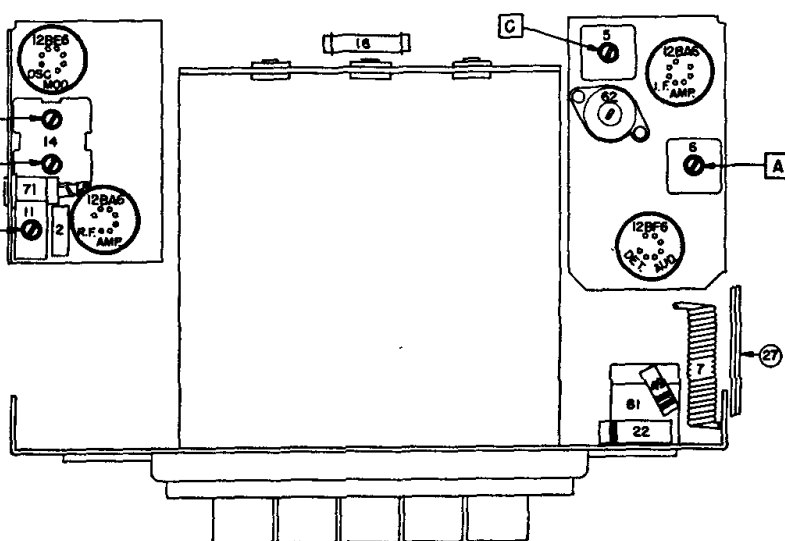
*Before making this adjustment check mechanical setting of oscillator core "H." The rear of the core should be $1\frac{1}{2}$ " from the mounting end of the coil form. (This measurement is readily made by inserting a suitable plug in the mounting end of the coil form.) Core adjustment should be made with an insulated screw driver.

**L is the pointer adjustment screw which is on the connecting link, between the pointer assembly and core guide bar (See tuner Dwg.). It should be adjusted so that when looking directly at the dial the pointer is on the 900 KC mark. This setting is to give the correct relationship between the pointer and the dial when the radio is installed in a car.

With the radio installed and the car antenna plugged in adjust the antenna trimmer "G" for maximum volume with the radio tuned to a weak station between 600 and 1000 KC (see sticker on case.)



PARTS LAYOUT — CHASSIS VIEW



PARTS LAYOUT — TUBE VIEW