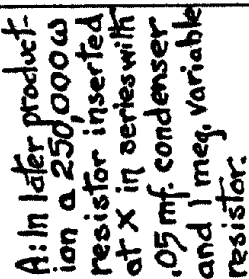


MODEL 71,770 AW-7)



IF PEAK 456 KC.

SCHEMATIC DIAGRAM MODEL A.M.-7

Voltage Analysis:

Readings should be made with a 1000 ohms per volt meter :

Line voltage 115 volts, A.C.—60 cycles.

<i>Line voltage 115 volts, A.C.—60 cycles.</i>	<i>Plate to ground</i>	<i>Screen to ground</i>	<i>Cathode to ground</i>	<i>Oscillator Anode to ground</i>
6D6 R.F. amplifier	250	100	4.5	...
6A7 Oscillator-modulator	250	100	4.5	160
6D6 I.F. amplifier	250	100	3	...
75	150	...	1.25	...
42	240	250	16.5	...

MODEL 71-770 (AW-7)

FRONT: