

MODELS AR165, -166, -177
MODELS AR171, -173, -174
-176, -180, -185

EMERSON RADIO & PHONO. CORP.

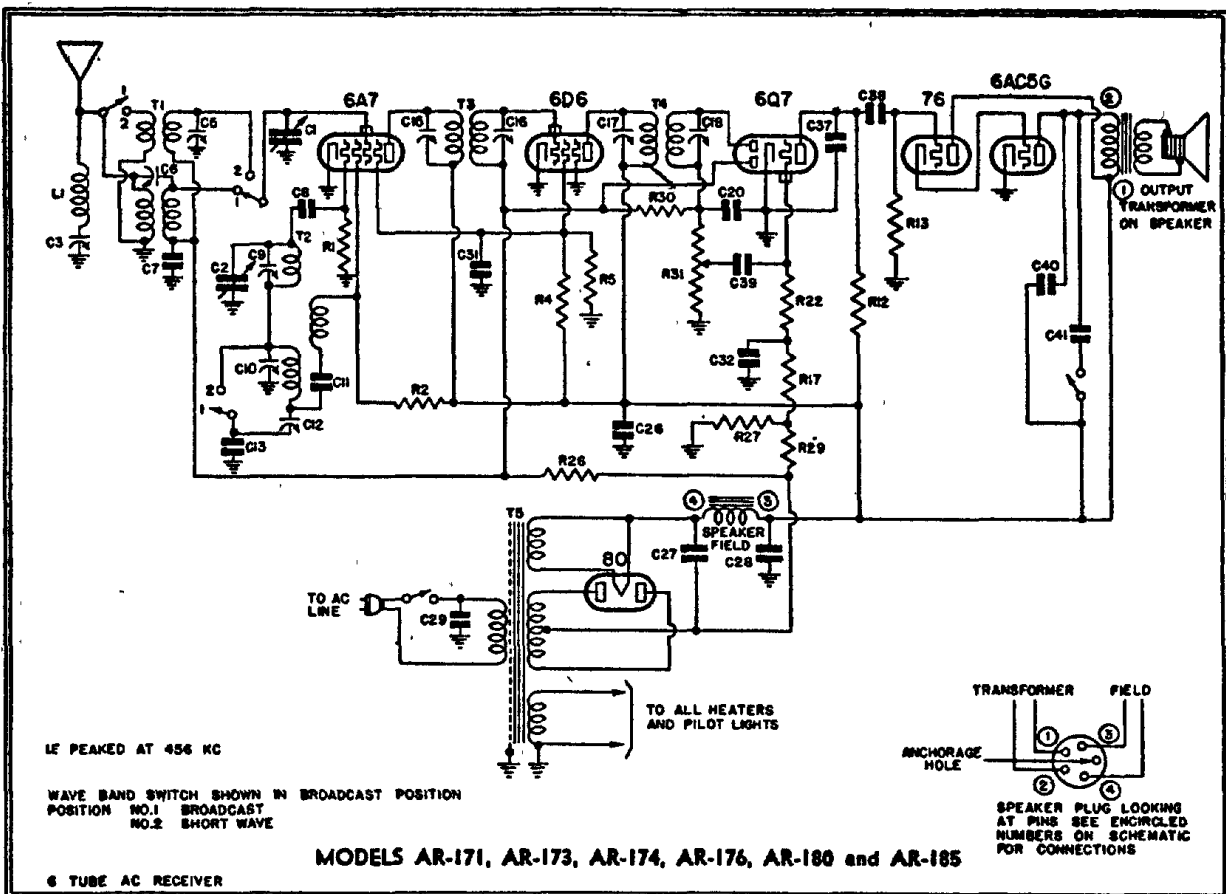
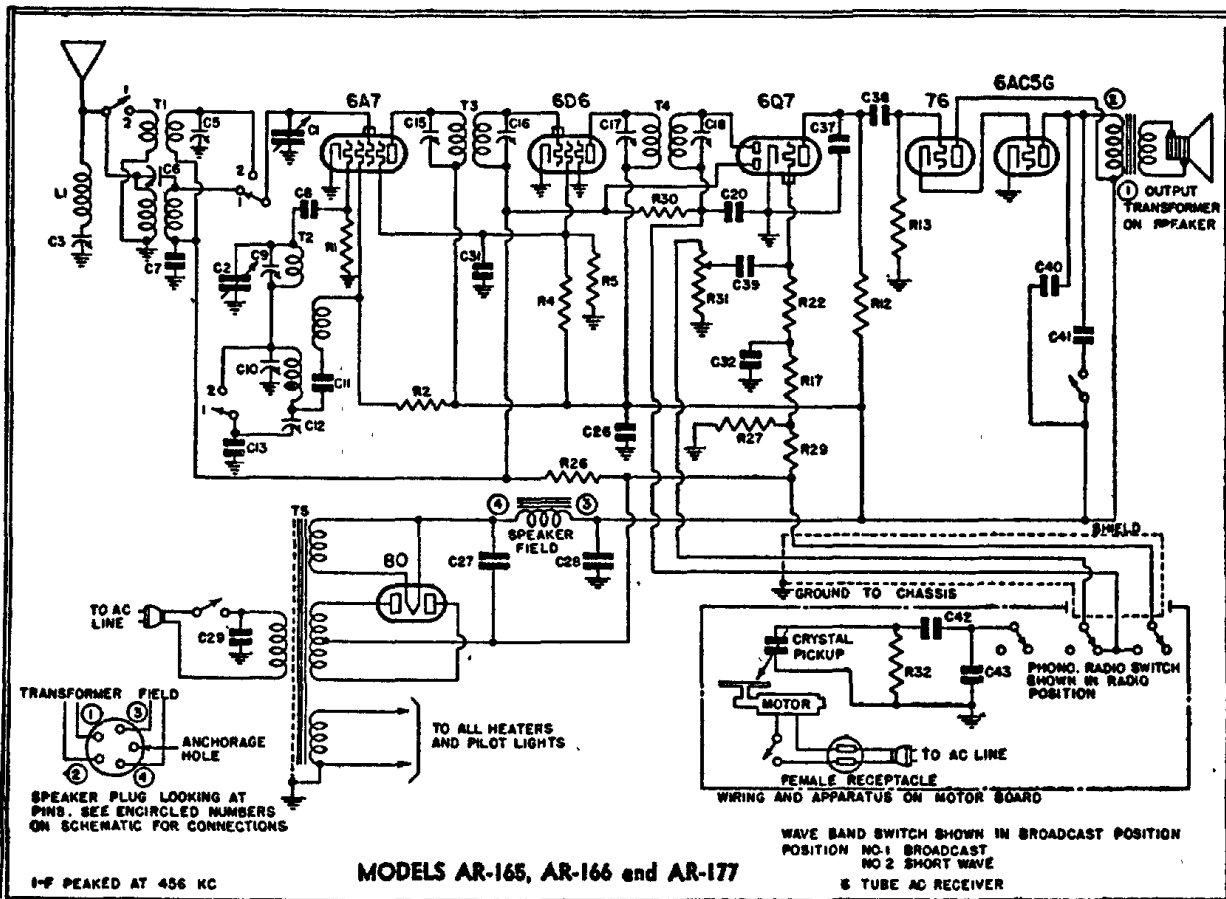
Readings should be taken with a 1000 ohms-per-volt meter. Voltages listed below are from point indicated to ground (chassis) with the volume control turned on full and no signal. Line voltage for these readings was 117.5 volts, 60 cycles, a.c. All readings except B plus at rectifier, heaters, and cathode voltages were taken on 250 volt scale.

Voltage rating 105-125 volts, 60 cycle, a.c.
Power consumption . . . 55 watts for receiver and 20 watts for motor
Frequency ranges . . . 540 to 1780 kc and 5.6 to 18 megacycles.

VOLTAGE ANALYSIS

Voltage at 80 filament to B minus (center tap of high voltage winding on power transformer)—825 volts.
Voltage across speaker field—75 volts.
The grid bias for all tubes is developed across resistors R-27 and R-29 (see schematic). The total voltage measured across R-27 and R-29 should be 15 volts.

Model AR serial numbers between 1,412,601 and 1,413,601, and above 1,416,650. These receivers use a 6AC5G output tube.



Tube	Plate	Screen	Cathode	Osc. Plate	Fil.
6A7	250	80	0	100	6.3 a.c.
6D6	250	80	0	—	6.3 a.c.
6Q7G	175	—	0	—	6.3 a.c.
76	250	—	12	—	6.3 a.c.
6AC5G	220	—	0	—	6.3 a.c.