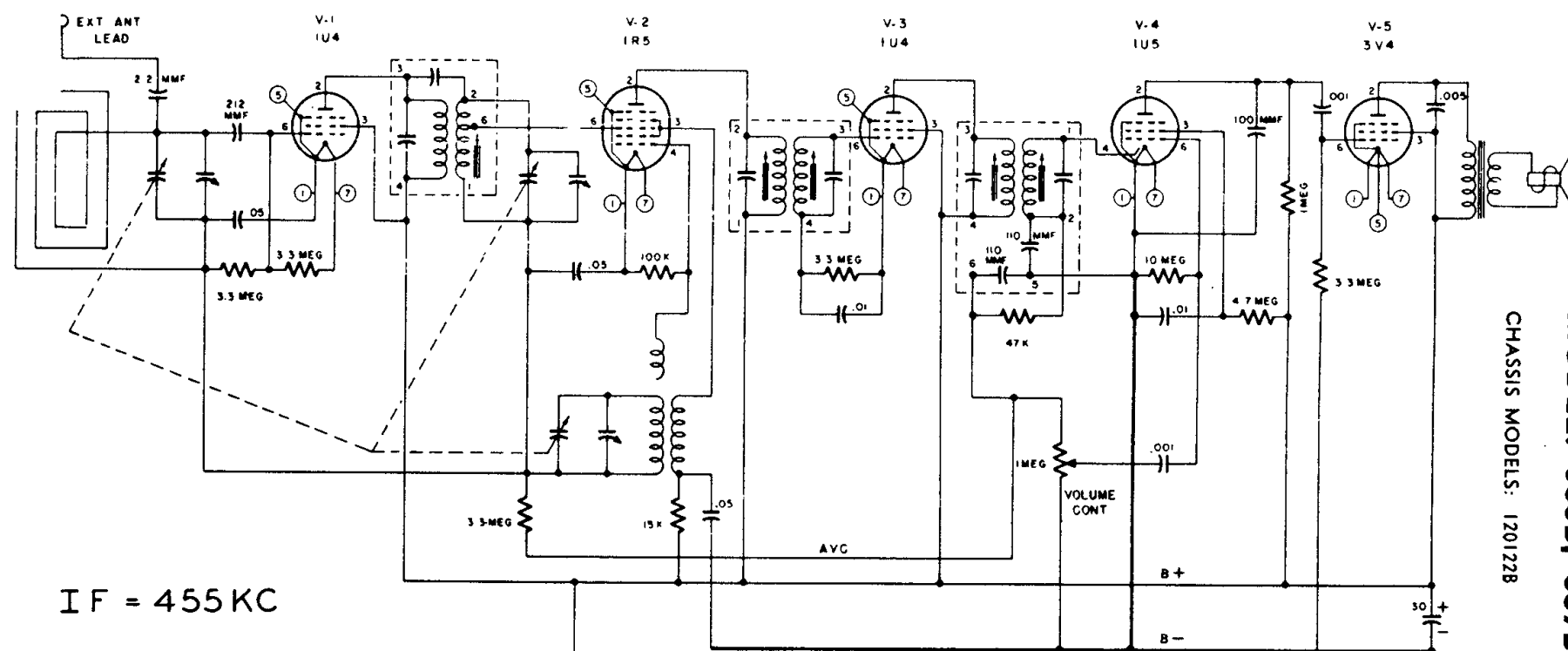


# Emerson Radio

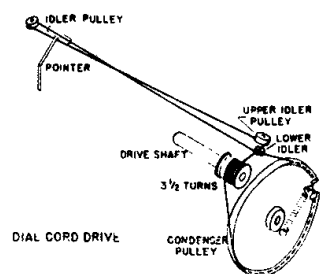
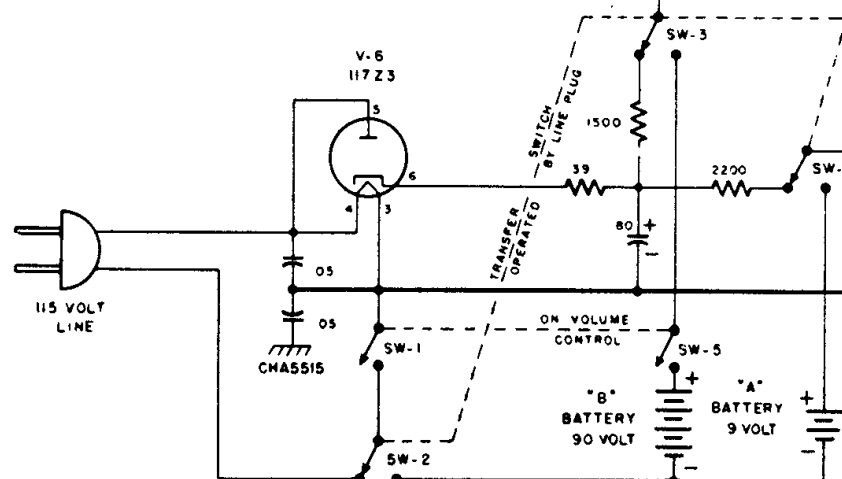
## SERVICE NOTES

MODEL: 656B, 657B

CHASSIS MODELS: 1201228



IF = 455 KC



Socket connections are shown as bottom views, with measurements from pin to common negative. Volume control at maximum; no signal applied for voltage measurements.

TUBE	PIN NUMBER						
	Pin 1	Pin 2	Pin 3	Pin 4	Pin 5	Pin 6	Pin 7
1U4	2.8 d.c.	92 d.c.	92 d.c.	N.C.	2.8 d.c.	1.8 d.c.	4.2 d.c.
1R5	1.4 d.c.	92 d.c.	60 d.c.	—10 d.c.	1.4 d.c.	.2 d.c.	2.8 d.c.
1U4	4.2 d.c.	92 d.c.	92 d.c.	N.C.	4.2 d.c.	3.1 d.c.	5.8 d.c.
1U5	0	26 d.c.	21 d.c.	—5V d.c.	—5V d.c.	0	1.4V d.c.
3V4	5.7 d.c.	88 d.c.	92 d.c.	0	7 d.c.	1.2 d.c.	8.5 d.c.
117Z3	N.C.	120 d.c.	0	120 a.c.	120 a.c.	120 d.c.	0