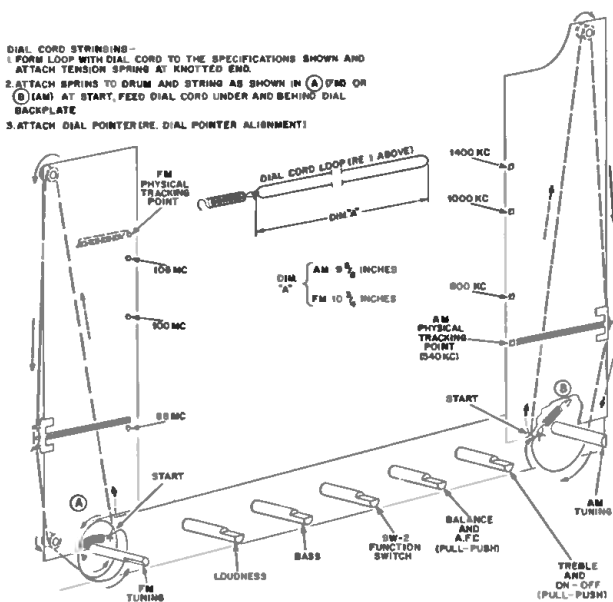
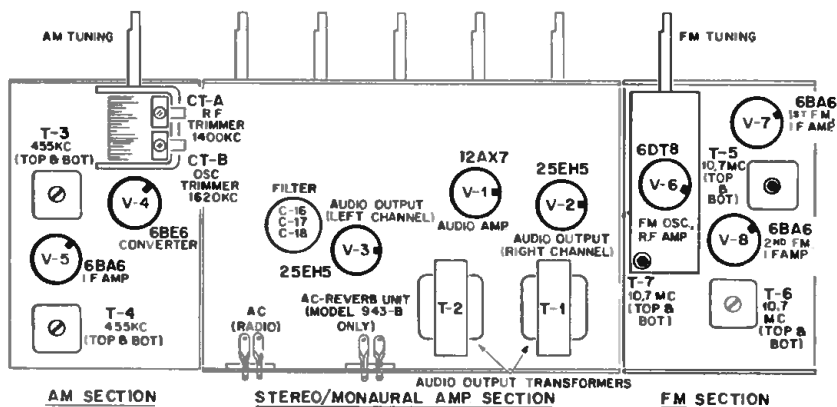


MODEL 943-B
CH. 120569-D

1. DIAL CORD STRINGS -
FORM LOOP WITH DIAL CORD TO THE SPECIFICATIONS SHOWN AND
ATTACH TENSION SPRING AT KNOTTED END.
2. ATTACH SPRINGS TO DRUM AND STRING AS SHOWN IN (A) AND OR
(B) (AM) AT START, FEED DIAL CORD UNDER AND BEHIND DIAL
BACKPLATE.
3. ATTACH DIAL POINTER (RE DIAL POINTER ALIGNMENT).



CONTROL SHAFTS (REFER TO FIG. 2 FOR FUNCTION)



FM TUNING

LOUDNESS

BASS

SW-2 FUNCTION SWITCH

BALANCE AND A.T.C. (PULL-PUSH)

TREBLE AND ON-OFF (PULL-PUSH)

AM TUNING

VARIABLE CAPACITOR C-28

V-1 12AX7

V-2 25Z5

V-3 25Z5

V-4 6BE6

V-5 6BA6

C-19, C-20, C-21 ELECTROLYTIC

ETCHED PRINTED CIRCUIT BOARD, BOTTOM VIEW

NOTE: * NOT USED ON MODEL 941-B (CH 120569-B)

RESISTANCE READINGS CHART, CHASSIS 120569-B, 569-D

SYM	TUBE	SW-2	PIN 1	PIN 2	PIN 3	PIN 4	PIN 5	PIN 6	PIN 7	PIN 8	PIN 9
V-1	12AX7	AM FM	*570K *570K	6.8 Meg 6.8 Meg	0 0	0 0	0 0	*570K *570K	6.8 Meg 6.8 Meg	0 0	3 3
V-2	25EH5	AM FM	33 33	470K 470K	23 23	33 33	470K 470K	*970 *970	*360 *360	— —	— —
V-3	25EH5	AM FM	33 33	470K 470K	33 33	43 43	470K 470K	† 1 Meg † 1 Meg	*360 *360	— —	— —
V-4	6BE6	AM FM	22K 22K	1 1	20 20	17 17	*970 *INF	*970 *INF	22Meg 22 Meg	— —	— —
V-5	6BA6	AM FM	4 Meg 4 Meg	0 0	20 20	23 23	*970 *INF	*970 *INF	150 150	— —	— —
V-6	6DT8	AM FM	5.5 Meg *2K	0 0	56 56	3 3	INF INF	5.5 Meg *12K	100K 100K	0 0	0 0
V-7	6BA6	AM FM	470K 470K	0 0	8 8	11 11	*INF 1K	*INF 1K	0 0	— —	— —
V-8	63A6	AM FM	1 1	0 0	13 13	15 15	*INF 1K	*INF 1K	100 100	— —	— —

NOTES: * Measured with low side of VTVM connected to junction of R-18, C-16 (B+ point).
‡ Capacitor charge-wait until meter settles (about 30 seconds).

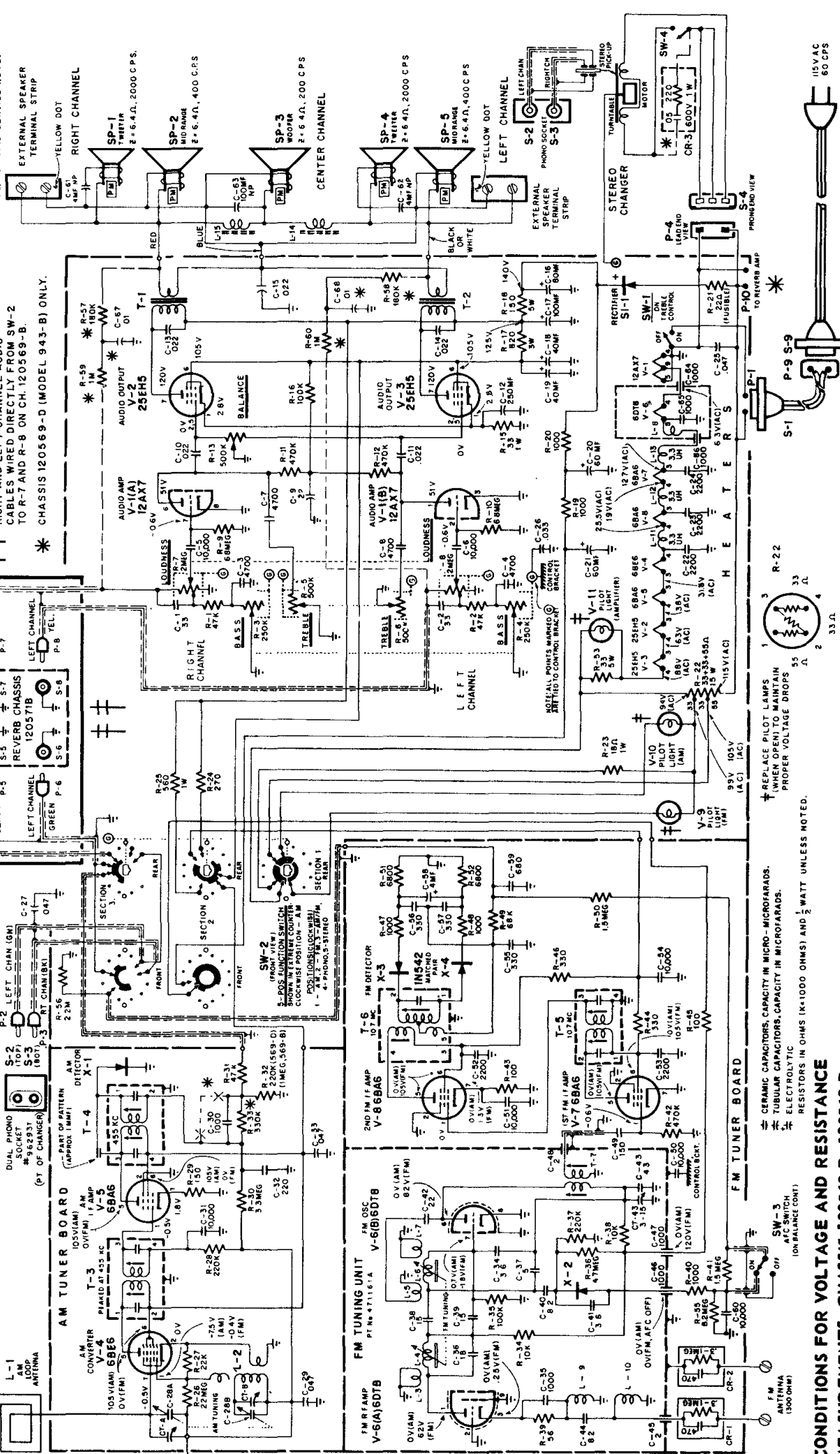
NOTE: CORRECT PHASING OF SPEAKERS IS ESSENTIAL. CABLES WIRING DIRECTLY FROM SW-2 TO R-7 AND R-8 ON CH. 120569-B.

NOTES: CIRCUIT INSIDE SOLID BOX USED ONLY WITH 120569-D. RIGHT AND LEFT CHANNEL AUDIO CABLES WIRING DIRECTLY FROM SW-2 TO R-7 AND R-8 ON CH. 120569-B.

CHASSIS 120569-D (MODEL 943-B) ONLY.

REVERB CHASSIS 120571B

RIGHT CHANNEL RED P-7
LEFT CHANNEL YEL. P-8
BLACK P-5
GREEN P-6



REPLACE PILOT LAMPS WHEN OPEN TO MAINTAIN PROPER VOLTAGE DROPS

RESISTORS IN OHMS (K=1000 OHMS) AND 1/2 WATT UNLESS NOTED.

CERAMIC CAPACITORS, CAPACITY IN MICRO-FARADS.

TUBULAR CAPACITORS, CAPACITY IN MICROFARADS.

ELECTROLYTIC RESISTORS IN OHMS (K=1000 OHMS) AND 1/2 WATT UNLESS NOTED.

FM TUNER BOARD

FM OSC V-6(B)8DT8

FM DETECTOR T-6

2ND FM IF AMP V-7(6)8A6

1ST FM IF AMP V-7(6)8A6

AUDIO AMP V-1(A) 12AX7

REVERB CHASSIS 120571B

RIGHT CHANNEL RED P-7

LEFT CHANNEL YEL. P-8

BLACK P-5

GREEN P-6

STEREO CHANGER

PHONO SOCKET

LEFT CHANNEL

RIGHT CHANNEL

STEREO PICK-UP

TURNABLE MOTOR

SW-4

CR-3 1600V 1W

115VAC 60 CPS

EMERSON RADIO

Model 941B, Chassis 120569B

Model 943B, Chassis 120569D

(Continued from preceding page)

5. Resistance measurements taken with:

(a) Power line cord disconnected from outlet.

(b) Loudness control set for minimum volume.

(c) SW-2 selector switch in AM and FM positions.

6. AFC switch in "Off" position at all times.

7. Filament resistance values are cold readings.

8. Nominal tolerance on component values makes possible a variation of $\pm 15\%$ in voltage and resistance readings.

9. N.C. denotes no connection, K is Kilohms, and Meg. is Megohms.

CONDITIONS FOR VOLTAGE AND RESISTANCE MEASUREMENTS, CHASSIS 120569-B, 120569-D

1. Voltages are positive d.c., resistances are in ohms, unless otherwise indicated.

2. Measurements taken with Voltmyst or equivalent.

3. All measurements taken from tube pin to B minus (metal can of electrolytic filter) unless otherwise indicated.

4. Voltage measurements taken with:

(a) Line voltage maintained at 115 volts a.c.

(b) Loudness control set for minimum volume.

(c) No signal input AM or FM.