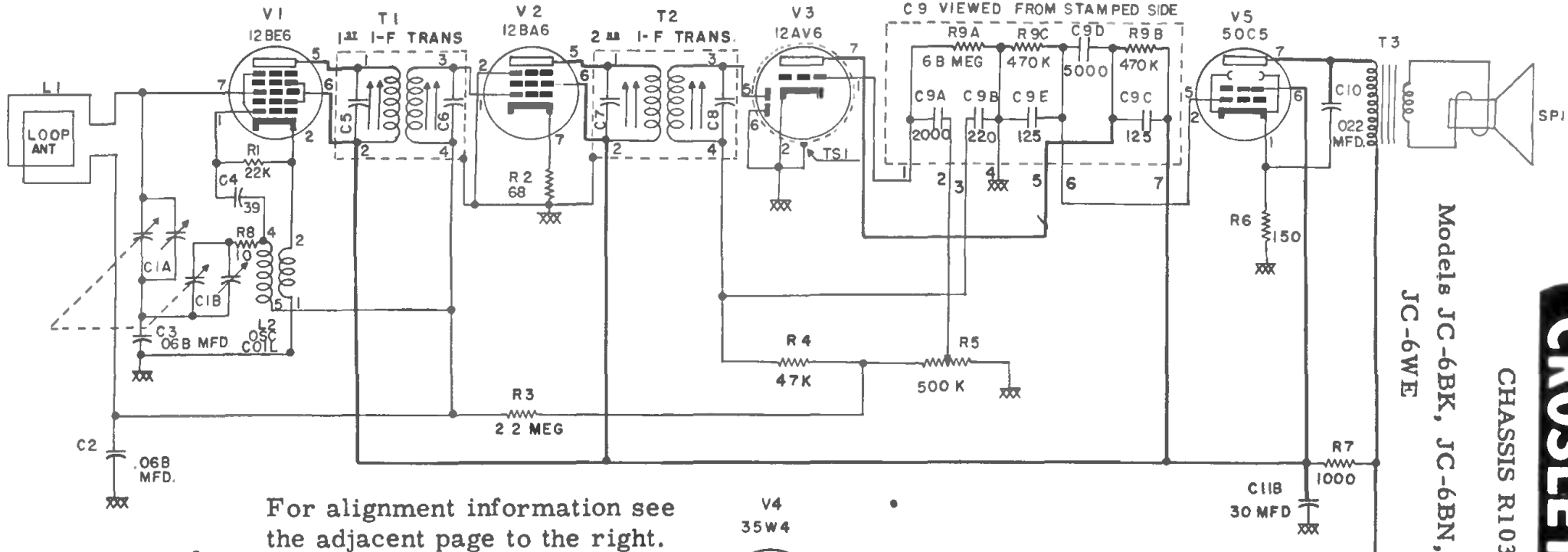


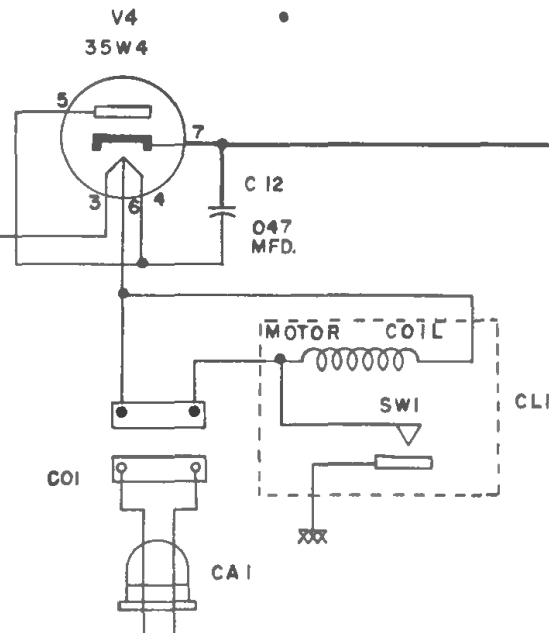
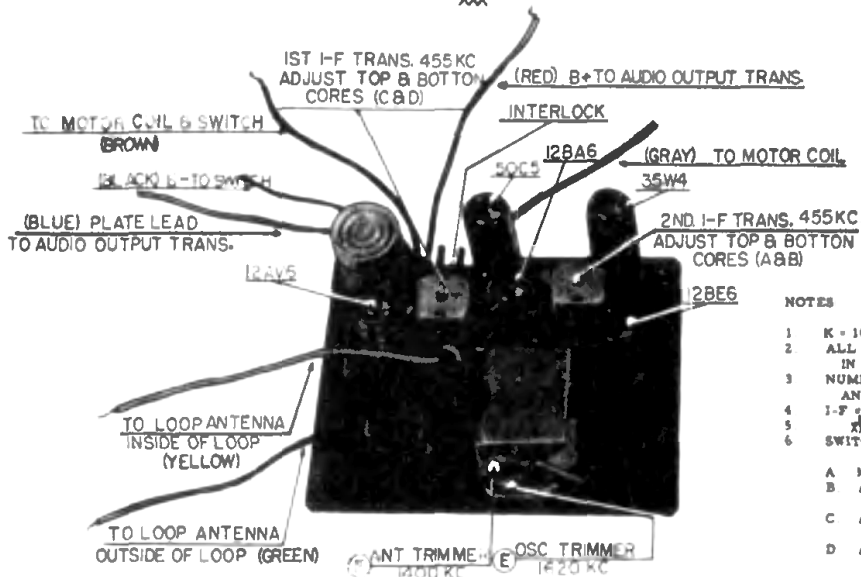
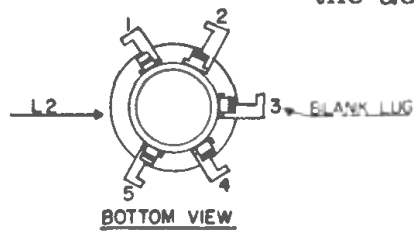
CROSLLEY

CHASSIS R103

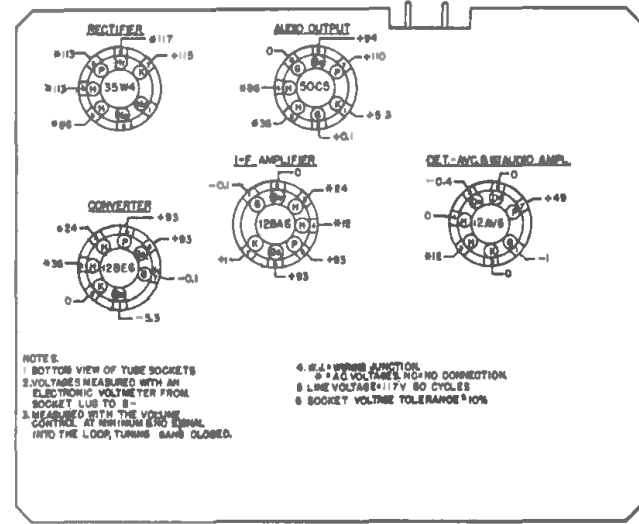
Models JC-6BK, JC-6BN, JC-6TN,
JC-6WE



For alignment information see
the adjacent page to the right.



- NOTES
- K = 1000 ALL TOLERANCES $\pm 20\%$ UNLESS OTHERWISE NOTED
 - ALL RESISTANCE VALUES IN OHMS, AND ALL CAPACITANCE VALUES IN MMF UNLESS OTHERWISE NOTED
 - NUMBER ONE TERMINAL OF I-F TRANSFORMERS CODED WITH GREEN DOT, AND NUMBERS PROGRESS CLOCKWISE
 - I-F = 455 KC
 - XXX = COMMON WIRING
 - SWITCH SW1 USED TO CONTROL OPERATION OF THE RADIO AS FOLLOWS
- MANUALLY BY SETTING THE RADIO SWITCH KNOB TO 'ON' OR 'OFF'
 - AUTOMATIC RADIO START BY PRESET OF ALARM SET KNOB AND WITH THE RADIO SWITCH IN THE 'AUTO-RADIO' POSITION
 - AUTOMATIC ALARM AND RADIO START BY PRESET OF ALARM SET KNOB AND THE RADIO SWITCH KNOB IN THE 'RADIO-ALARM' POSITION
 - AUTOMATIC STOP AFTER NOT MORE THAN A 60 MINUTE INTERVAL BY SETTING THE SLEEP CONTROL AND WITH THE RADIO SWITCH KNOB IN THE 'OFF' POSITION



SOCKET VOLTAGE CHART