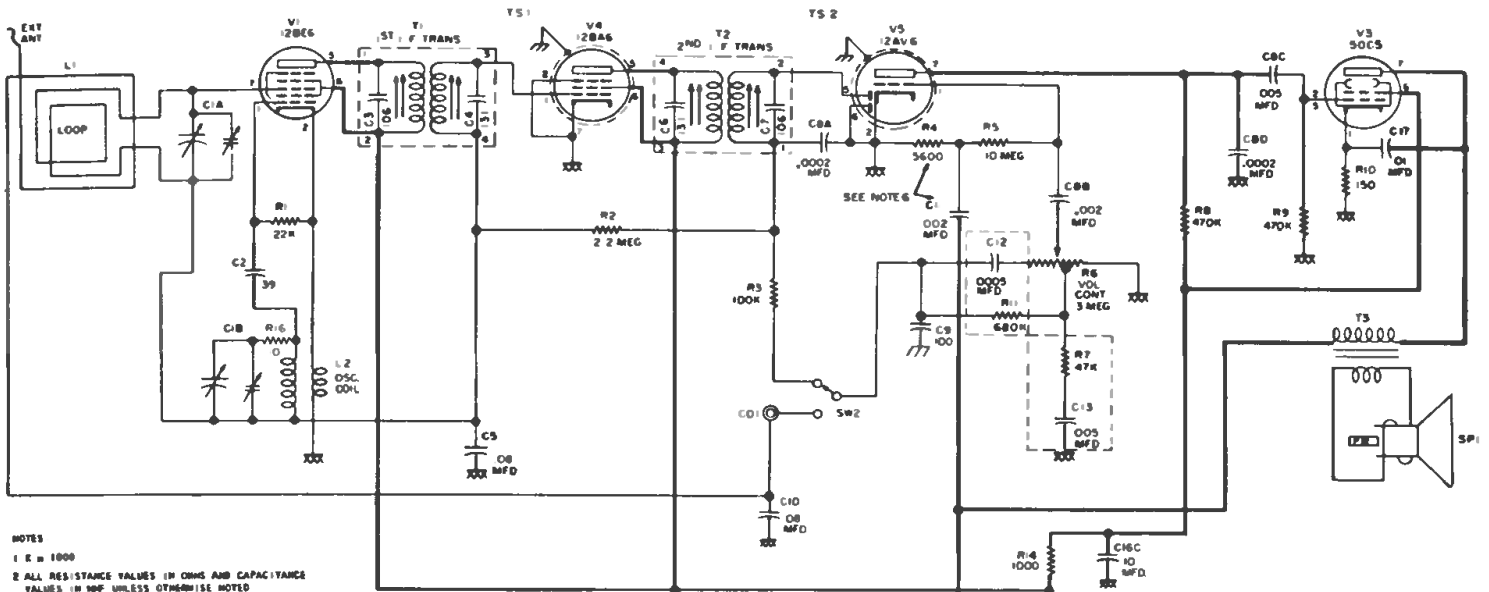


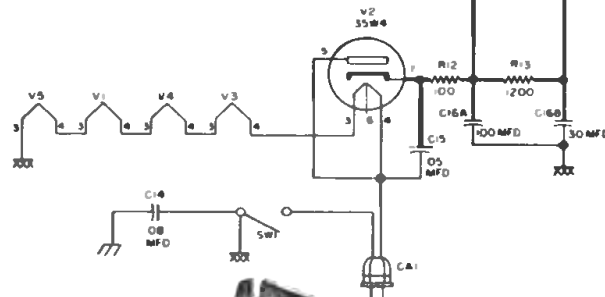
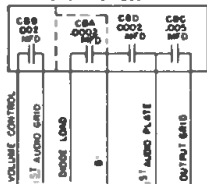
CROSLEY

MODELS: E15WE, E15BE, E15TN, E15SL,
E15CE, E20MN, E20GN, E20GY, E20TN
(Chassis 15-20E)

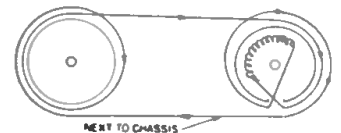


- NOTES
- 1 K = 1000
 - 2 ALL RESISTANCE VALUES IN OHMS AND CAPACITANCE VALUES IN PPF UNLESS OTHERWISE NOTED
 - 3 NUMBER ONE TERMINAL ON I.F. TRANSFORMERS CODED WITH GREEN DOT, NUMBERS PROGRESS CLOCKWISE
 - 4 I.F. = 455 KC
 - 5 --- = CHASSIS
 - 6 B4 AND C11 USED WITH PH. SPEAKERS ONLY

DIAGRAM SYMBOL CB



PLACEMENT OF DIAL DRIVE CORD
TUNING CAPACITOR GANG IN
THE CLOSED POSITION



PHONO JACK
LOOP BACK

RADIO-PHONO
SWITCH

2ND I-F TRANS 455 KC
ADJUST TOP & BOTTOM
SLUGS (A & B)

LOW SIDE OF SIGNAL
GEN TO THIS LUG

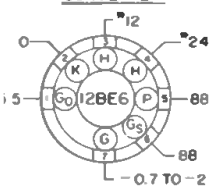
12AV6

35W4
50C5

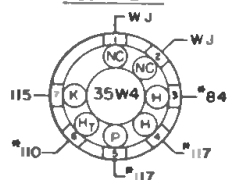
EXT ANT
CONNECTION
LOOP BACK

SOCKET VOLTAGE CHART

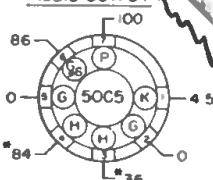
CONVERTER



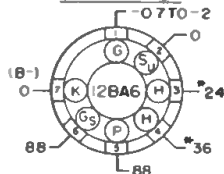
RECTIFIER



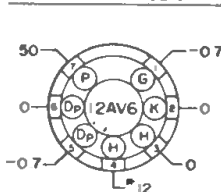
AUDIO OUTPUT



I-F AMPLIFIER



DET-AVC & 1ST AUDIO AMPL



CHASSIS, TOP VIEW

NOTES

- 1 BOTTOM VIEW OF TUBE SOCKETS
- 2 VOLTAGES MEASURED WITH AN ELECTRONIC VOLTMEETER FROM SOCKET LUG TO B- (PIN 7 OF 12BA6)
- 3 MEASURED WITH THE VOLUME CONTROL AT MINIMUM & NO SIGNAL INTO THE LOOP, TUNING GANG CLOSED
- 4 WJ = WIRING JUNCTION
- 5 AC VOLTAGES NC = NO CONNECTION
- 6 LINE VOLTAGE = 117V, 60 Hz AC
- 7 SOCKET VOLTAGE TOLERANCE $\pm 10\%$

1ST I-F TRANS 455 KC
ADJUST TOP & BOTTOM
SLUGS (C & D)

ANT TRIMMER (F)

1400 KC

OSC TRIMMER (E)

1620 KC