

CROSLLEY RADIO CORP.

MODELS A168, A268

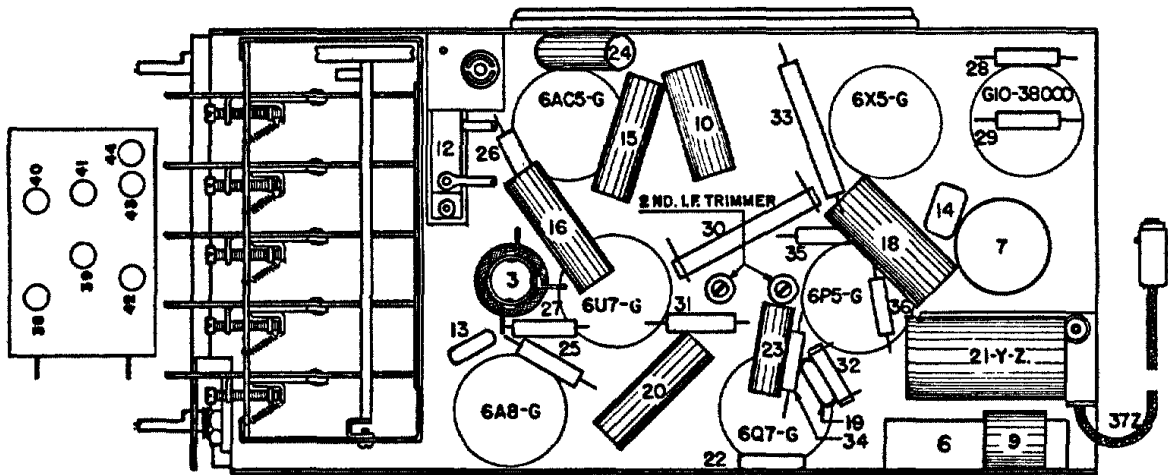


Fig. 3. Bottom View A-168 and A-268

TUBES AND VOLTAGE LIMITS

The following table gives the functions of the tubes used, together with the voltage readings between the tube socket contacts and the receiver chassis. Voltage readings taken with a 1000 ohm per volt, 500 volt voltmeter (except filaments) with receiver in operating condition and no signal input. The filament voltages should be measured with an accurate low range D. C. voltmeter (approximately 0 to 10 volts). Voltage limits may vary plus or minus 10% of values given.

SPECIFICATIONS

The models A-168 and A-268 CROSLLEY SAFETY-TUNE SIXER ROAMIOS are single unit, six-tube superheterodyne receivers. They incorporate the new Crosley mechanical Push Button Tuning system. This system is unsurpassed for easy adjustment, accuracy, simplicity and ruggedness of design. The highly efficient superheterodyne circuit employs six tubes to the utmost advantage as follows: one 6A8-G as oscillator and modulator or mixer, one 6U7-G as intermediate frequency amplifier, one 6Q7-G as detector, A. V. C., and 1st. audio amplifier, one 6P5-G as second audio amplifier (driver), one 6AC5-G as power output and a 6X5-G as a rectifier. The vibrator is the full wave type.

Power Output (max.) 6 Watts—approx.
Battery Drain 6.5 Amperes—approx.
It will be noted that certain terminals on the sockets are used as junction blocks.

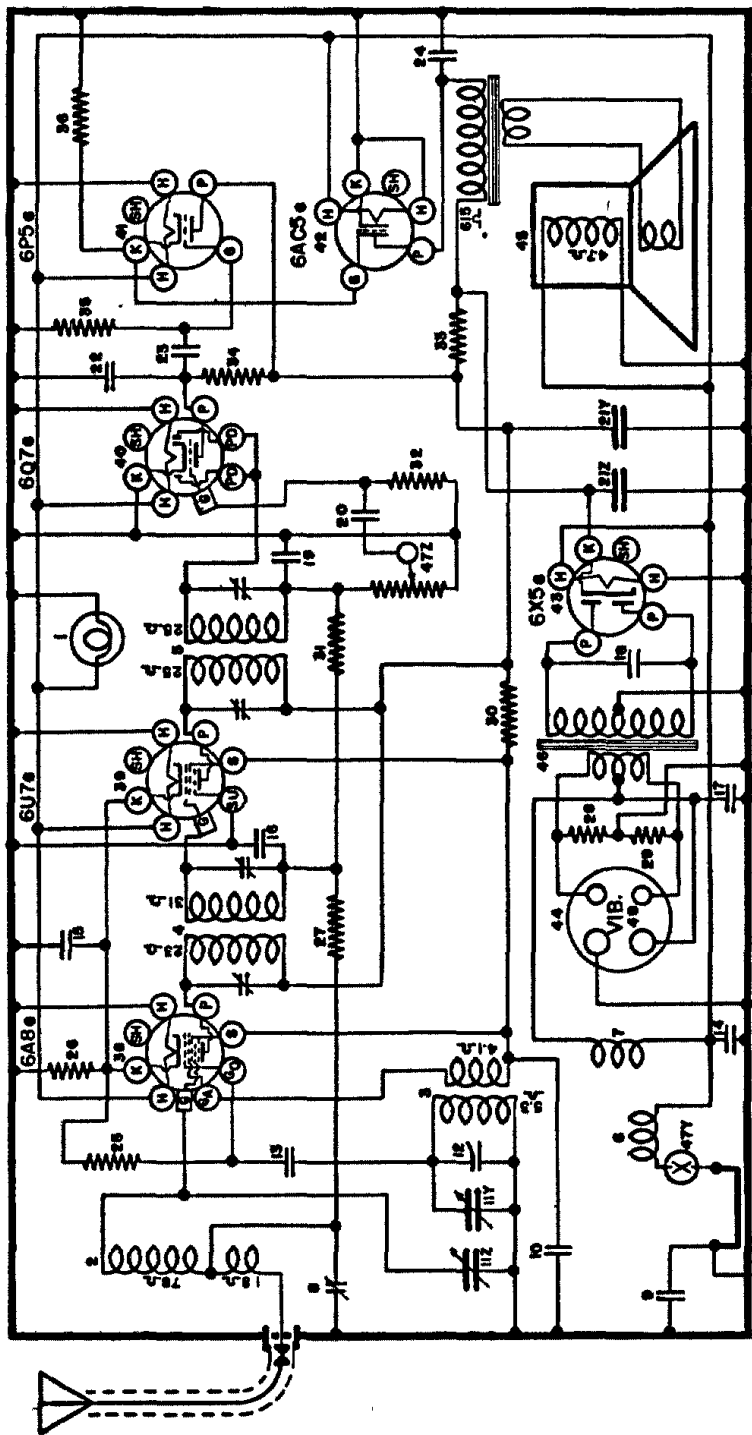


FIG. 1—WIRING DIAGRAM—MODELS A-168 and A-268

TUBE	Function	SOCKET VOLTAGE READINGS									
		H	P	S	Su	K	Ca	Co	G	MODEL	1F
6A8-G	Oscillator-Modulator	6.0	220	100	—	3.5	100	—	—	168	—
6U7-G	I-F. Amplifier	6.0	220	100	—	3.5	—	—	—	268	—
6Q7-G	Det., A. V. C.	6.0	60	—	—	—	—	—	—	—	455 K.C.
6P5-G	2nd A-F. Amplifier	6.0	200	—	—	11	—	—	—	—	—
6AC5-G	Output	6.0	225	—	—	—	—	—	—	—	—
6X5-G	Rectifier	6.0	—	—	—	240	—	—	—	—	—

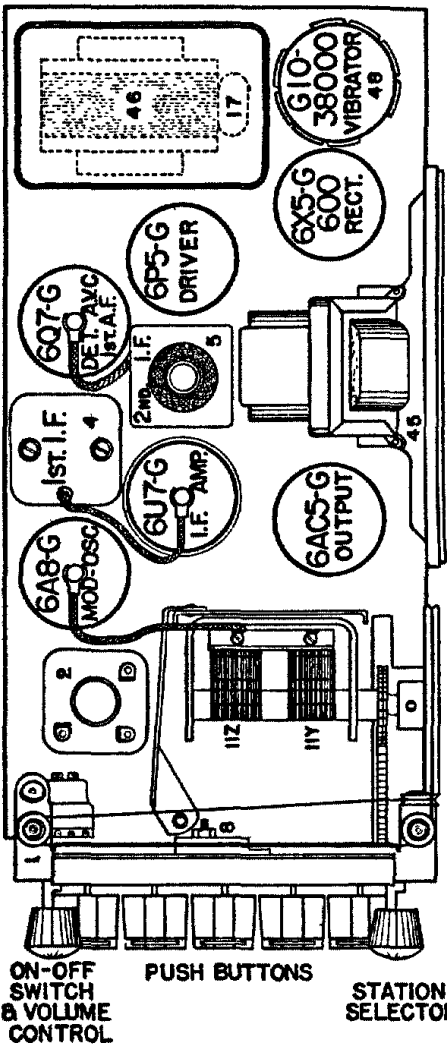


Fig. 2. Top View A-168 and A-268