

EMERSON RADIO

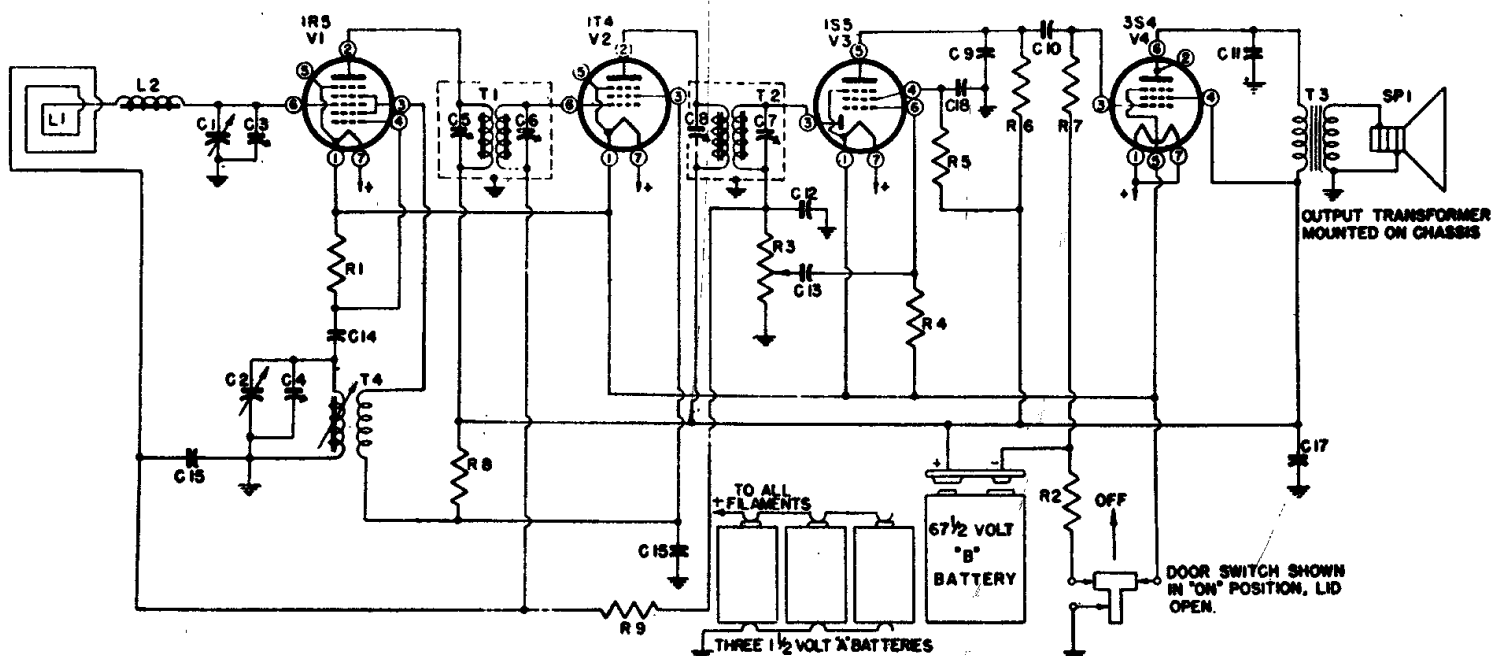
MODELS: 570 - 574 - 580

CHASSIS MODEL: 120064

Schematic Symbol	†Part No.	DESCRIPTION
C1, C2	900022	Two-gang variable condenser
*C3	Part of C1	Trimmer
*C4	Part of C2	Trimmer
*C5, C6	Part of T1	Trimmer
*C7, C8	Part of T2	Trimmer
C9	928013	0.0001 mfd. ceramic condenser
C10	920497	0.001 mfd., 200 volt condenser
C11	920496	0.005 mfd., 200 volt condenser
C12	928104	212 mmfd., ceramic condenser
C13	920497	0.001 mfd., 200 volt condenser
C14	928010	0.0001 mfd., ceramic condenser (Alternate part 928013)
C15	920494	0.05 mfd., 200 volt condenser
C16	920120	0.02 mfd., 100 volt condenser
C17	925063	16 mfd., 100 volt electrolytic condenser
C18	920485	0.01 mfd., 100 volt condenser
L1	700019	Loop antenna
L2	708007	Loading coil
R1	340970	100,00 ohms, ½ watt resistor
R2	340470	820 ohms, ½ watt resistor
R3	390025	1 meg., volume control
R4	351450	10 meg., ½ watt resistor
R5	351330	3.3 meg., ½ watt resistor
R6	351130	470,000 ohms, ½ watt resistor
R7	351250	1.5 meg., ½ watt resistor
R8	340730	10,000 ohms, ½ watt resistor
R9	351330	3.3 meg., ½ watt resistor

The following voltage readings are d-c measurements taken from B— (chassis) to the indicated tube-socket pin. A 1000 ohms-per-volt meter should be used for all readings except those indicated by an asterisk (*), which should be taken with a d-c vacuum-tube voltmeter. Take readings with the volume control set at minimum and the variable condenser closed. Use fresh batteries.

TUBE	PIN NUMBER						
	1	2	3	4	5	6	7
1R5		60	35	*-8		*-0.2	1.5
1T4		60	35			*-0.2	1.5
1S5			*-0.2	*17	*25	*-0.1	1.5
3S4	1.5	59	*-6.5	60		59	1.5



I-f Alignment

1. Rotate the variable condenser to the minimum capacity position.
2. Feed 455 kc to the grid (pin 6) of the 1R5 tube through a 0.01 mfd. condenser.
3. Adjust the four i-f trimmer screws for maximum response. (Clip the test signal lead to the stator of the larger capacity section of the variable condenser.)

R-f Alignment

1. Connect the test oscillator to a coil composed of three or four turns of wire wound in a circle approximately 12 inches in diameter. This coil should be placed parallel to and in line with the receiver loop at a distance of approximately 15 to 20 inches.
2. Radiate a signal at 1620 kc, rotate the variable condenser to minimum capacity, and adjust the oscillator trimmer, on the smaller section of the variable condenser, for maximum response.
3. Radiate a signal at 1420 kc, tune in the 1420 kc signal, and adjust the antenna trimmer, on the larger section of the variable condenser, for maximum response.
4. Radiate a signal at 600 kc, set the dial indicator to 60, and adjust the oscillator coil core trimmer while rocking the variable condenser for maximum response.
5. Return to 1620 kc and check alignment. If readjustment is necessary, repeat Steps 2 to 4 until no further improvement is noted.