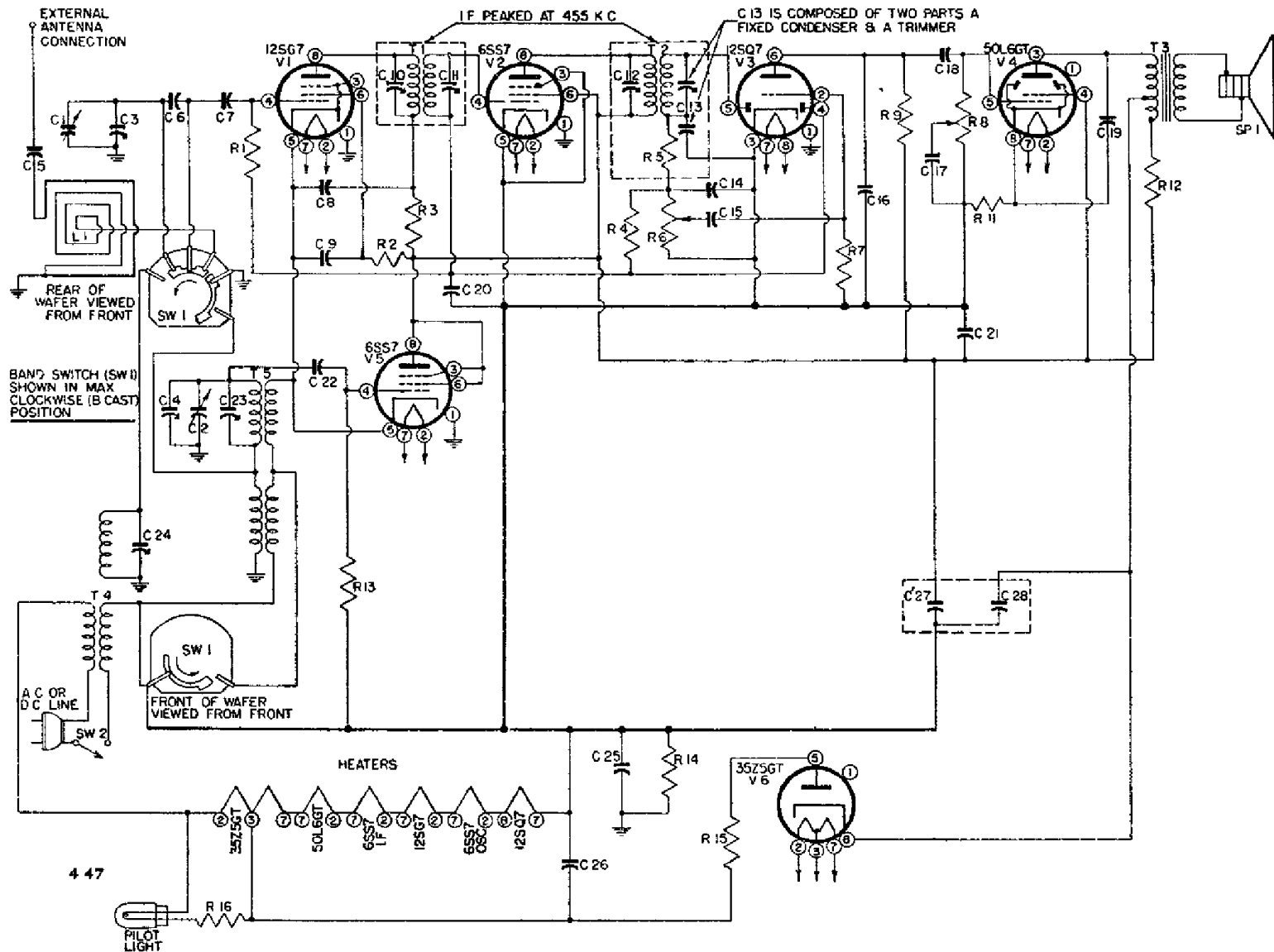


EMERSON RADIO AND PHONO. CORP.

MODELS 513, 514, 534
Chassis 120007



DESCRIPTION

TYPE: Two-band superheterodyne.

FREQUENCY RANGE:

540-1620 kc. (555-185 meters)
8.8-12.2 mc. (16.3-24.5 meters)

TYPE OF TUBES:

1—12SG7, mixer
1—6SS7, oscillator
1—6SS7 or 7B7, i-f amplifier
1—12SQ7, diode detector, a-f amplifier, a.v.c.
1—50L6GT, beam power output
1—35Z5GT, half-wave rectifier

POWER SUPPLY: A.C. or D.C.

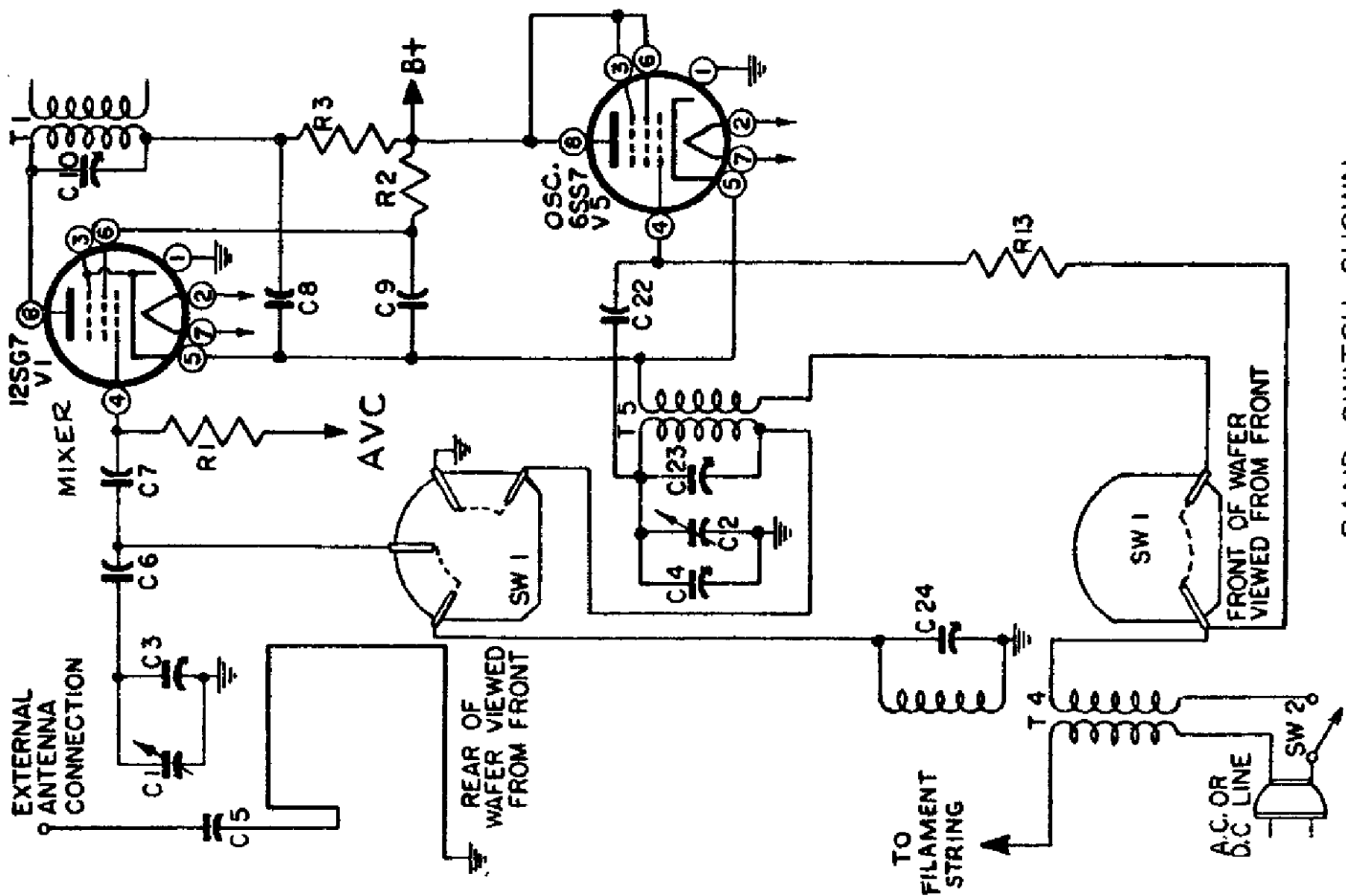
VOLTAGE RATING: 105-125 volts.

POWER CONSUMPTION. 30 watts.

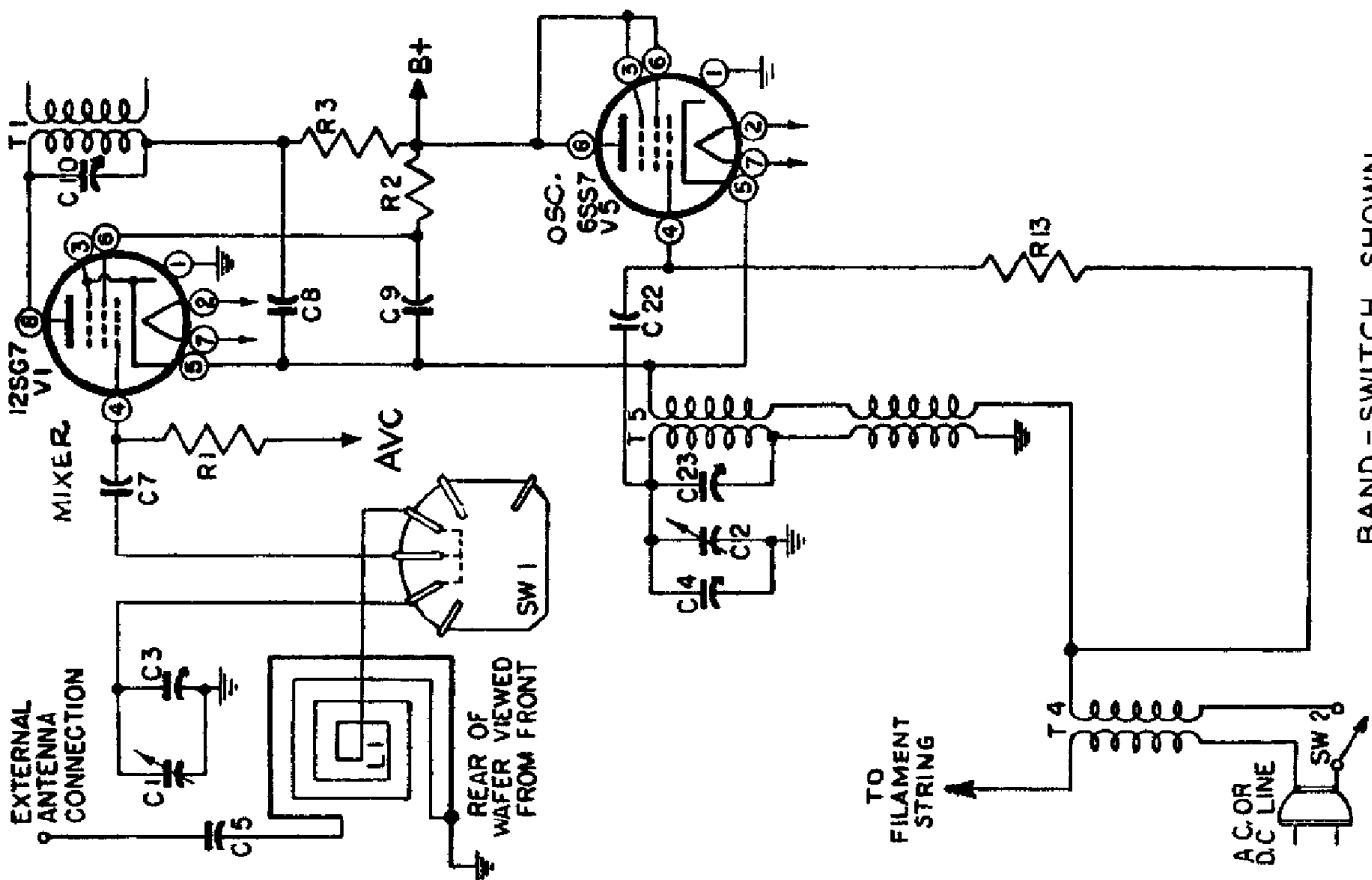
GENERAL NOTES

1. If replacements are made or the wiring disturbed in the r-f section of the circuit, the receiver should be carefully realigned.
2. In operating the receiver on d.c., it may be necessary to reverse the line plug for correct polarity.
3. The color coding of the i-f transformer leads is as follows:
Grid—green Plate—blue
Grid return—black B+—red
4. All models have self-contained antennas and do not require additional antenna connections. For permanent home installations, however, if it is desired to improve reception of weak stations, an additional outdoor antenna may be used. For this purpose a lead has been brought out of the rear near the line cord.
5. The self-contained loop antenna operates at maximum efficiency when its position is at right angles to the broadcasting source. It is important, therefore, once the station is tuned in, to rotate the cabinet back and forth through a quarter of a circle (90 degrees), leaving it at the position where the station is received with maximum volume.
6. Where 7B7 loctal tube is used in place of 6SS7 i-f amplifier, tube types are not interchangeable. Use same voltage data for both types.

EMERSON RADIO AND PHONO. CORP. MODELS 513, 514, 534
Chassis 120007



BAND-SWITCH SHOWN
AT 2ND POSITION COUNTERCLOCKWISE.
SHORT WAVE BAND
8.8 - 12.2 MC.



BAND-SWITCH SHOWN
AT 1ST POSITION
BROADCAST BAND
540 - 1620 KC.