

DU MONT

ALLEN B. DU MONT LABORATORIES, INC.

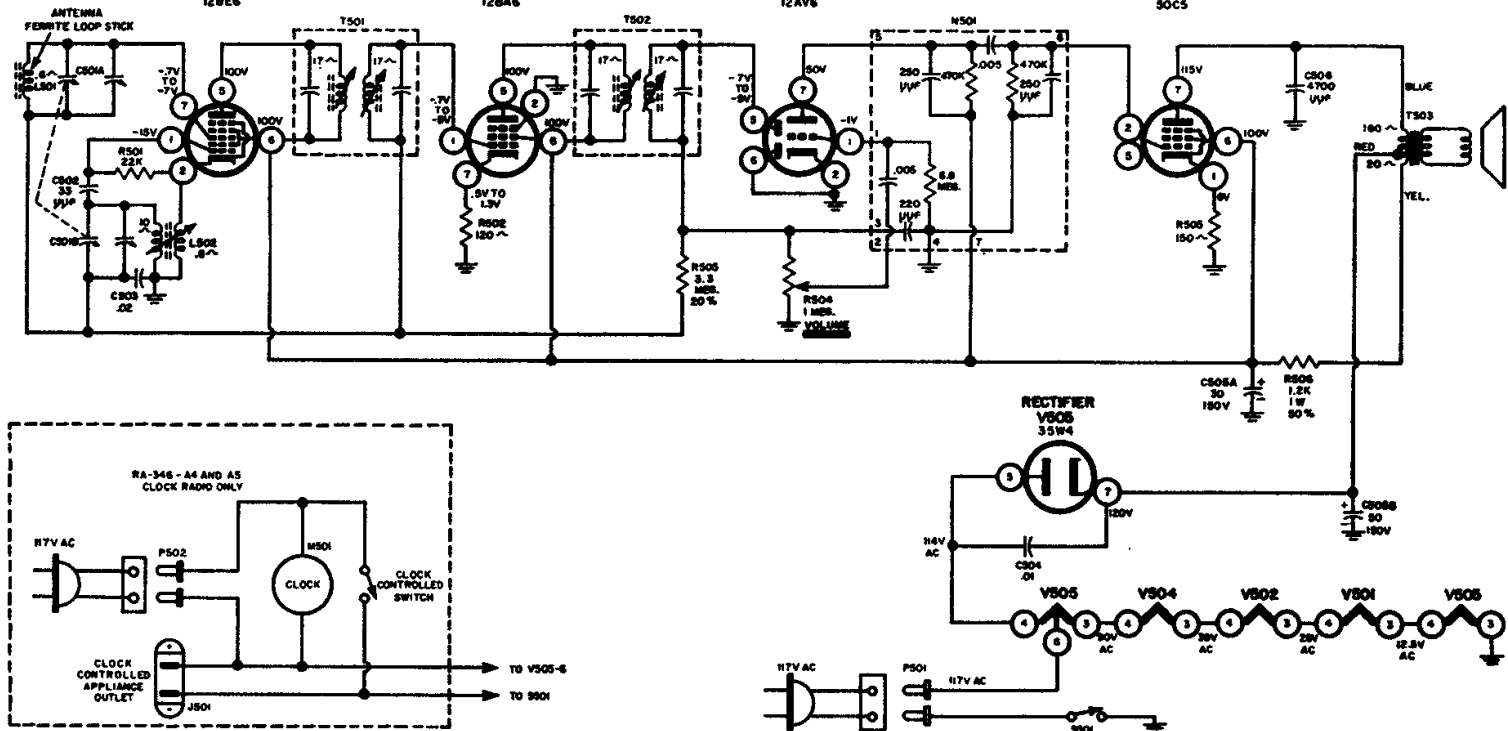
RA-346 RADIO

MIXER-OSC.
V501
12BE6

I F AMP
V502
12BA6

DETECTOR-AUDIO AMP.
V503
12AV6

POWER AMP.
V504
50C5



ALIGNMENT INSTRUCTIONS

Use an isolation transformer if available. Turn the volume control about 1/3 clockwise. Adjust the generator for the lowest

signal necessary to obtain an output reading. Make all adjustments with an insulated alignment tool.

Step	Signal Generator		Tuning Capacitor Setting	Output Meter Connection	Adjust
	Frequency	Connect to			
1	455 400 cps AM Mod.	Loop, of several turns of wire placed near AM antenna	Minimum Capacity	AC meter across speaker voice coil	I. F. Transformers T502 and T501 (top and bottom) for maximum output indication.
2	1640 KC 400 cps AM Mod.	As above	As above	As above	Oscillator trimmer capacitor of C501B for maximum output indication.
3	1640 KC 400 cps AM Mod.	Remove wire loop from AM antenna. Radiate a signal into the set	As above	As above	Antenna trimmer capacitor of C501A for maximum output indication. Re-check step 2.
4	540 KC 400 cps AM Mod.	As above	Maximum Capacity	As above	Oscillator tracking coil L502 for maximum output. Note: Disregard this step when L502 is a fixed inductance.

