

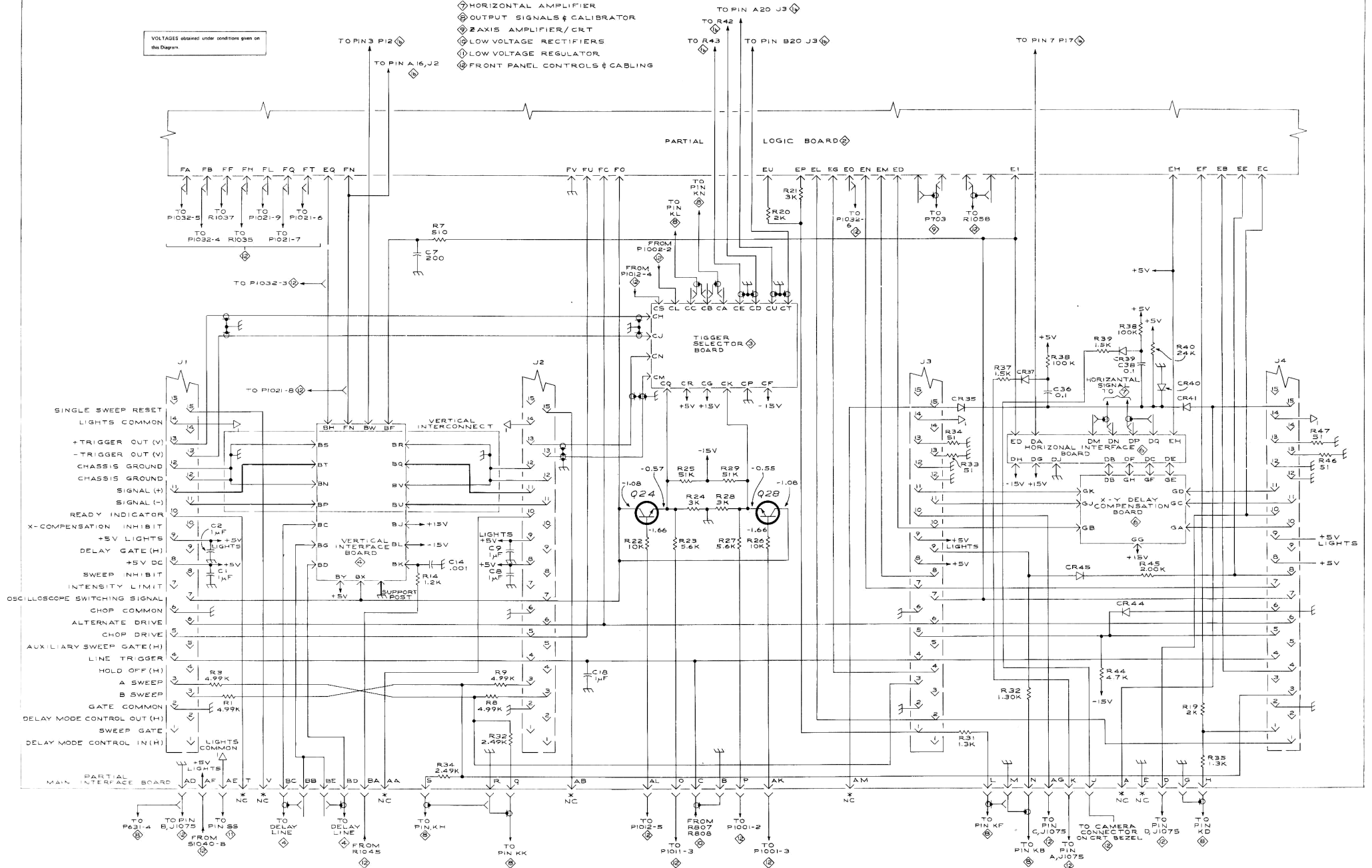
BLOCK DIAGRAM

REFERENCE DIAGRAMS

- MAIN INTERFACE
- LOGIC CIRCUIT
- TRIGGER SELECTOR
- VERTICAL INTERFACE
- HORIZONTAL INTERFACE
- HORIZONTAL AMPLIFIER
- OUTPUT SIGNALS & CALIBRATOR
- 2 AXIS AMPLIFIER/CRT
- LOW VOLTAGE RECTIFIERS
- LOW VOLTAGE REGULATOR
- FRONT PANEL CONTROLS & CABLING

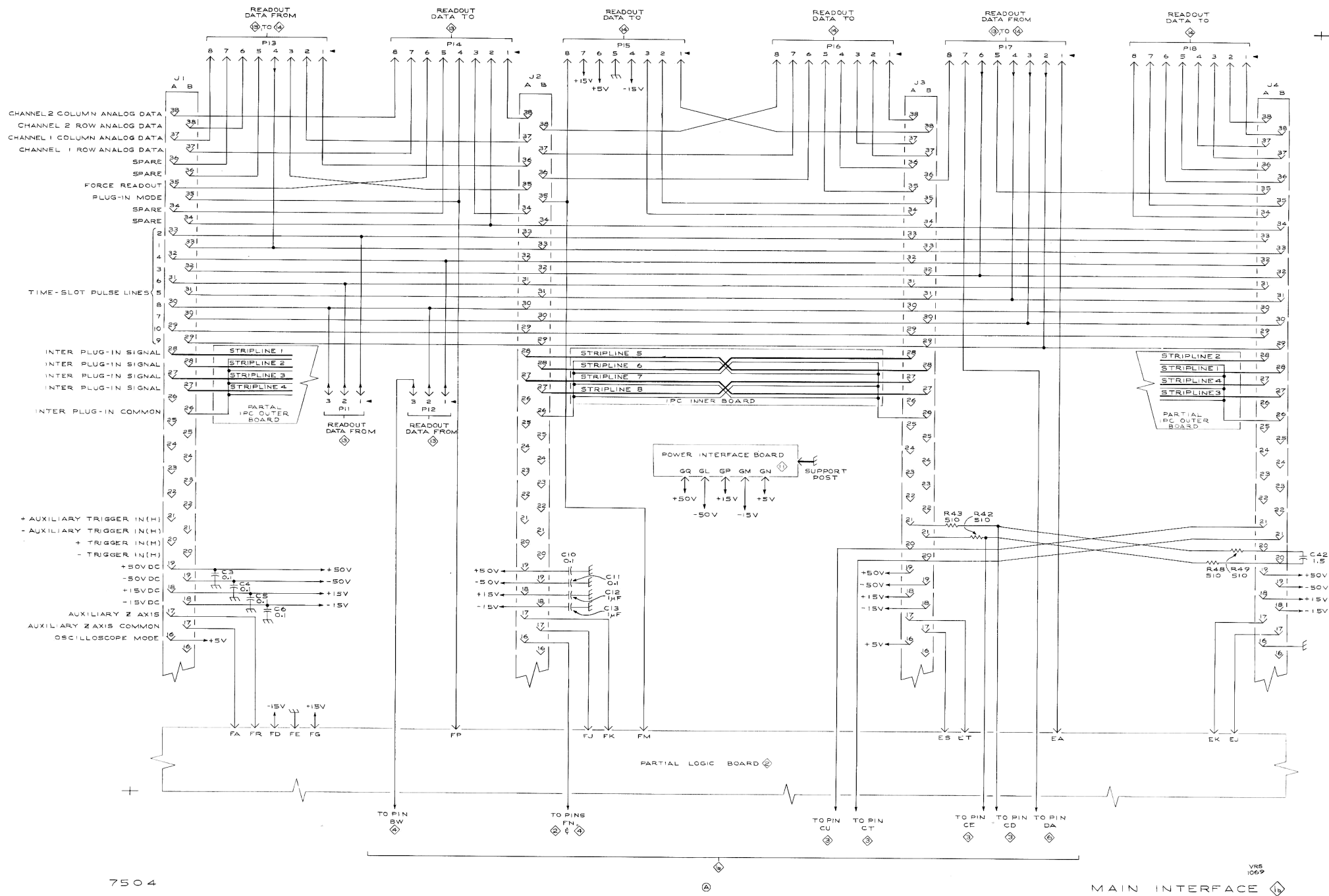
- NOTES:
- SEE PARTS LIST FOR SEMICONDUCTOR TYPES
 - XNC - NORMALLY NOT CONNECTED

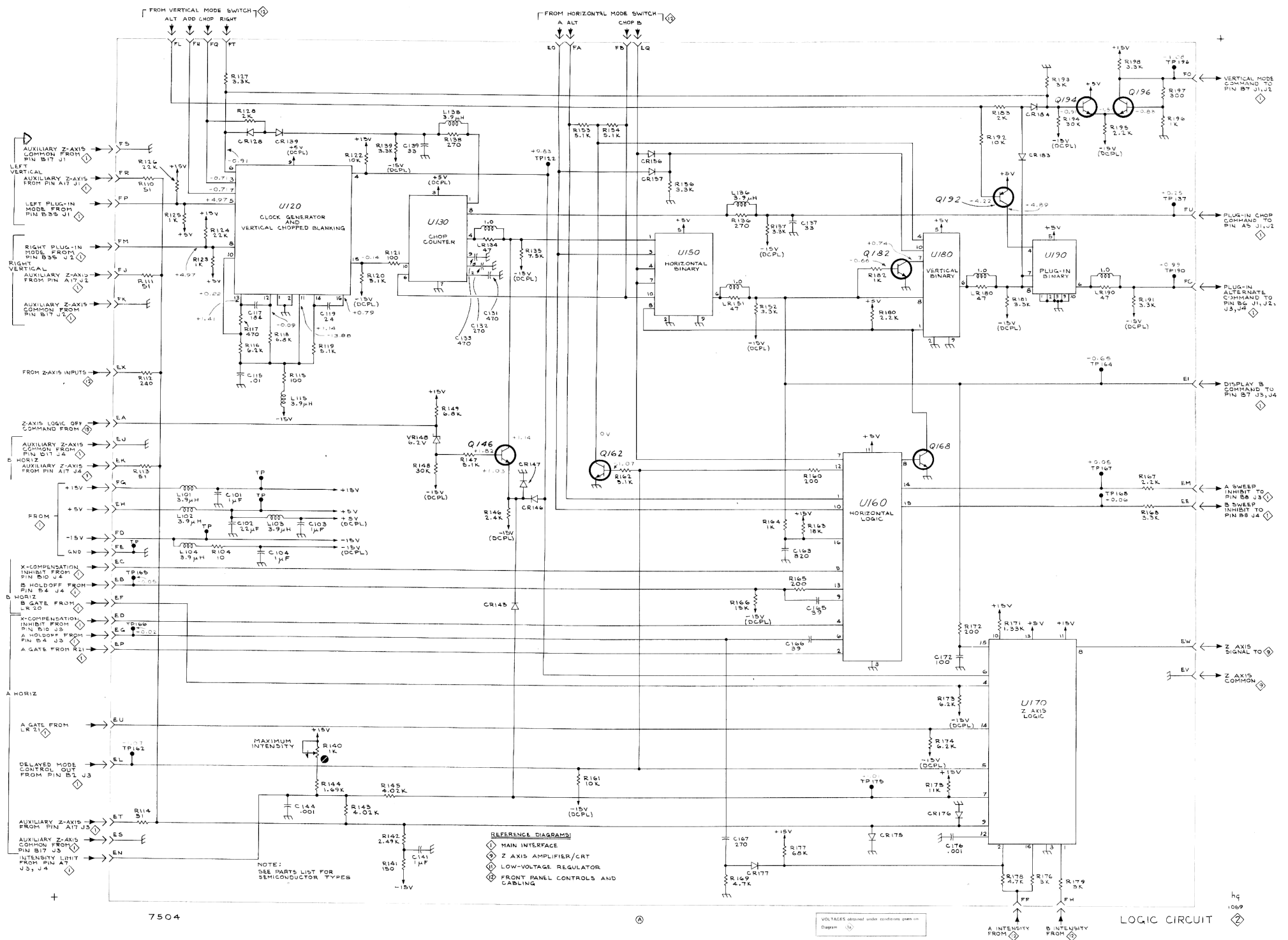
VOLTAGES obtained under conditions given on the Diagram.

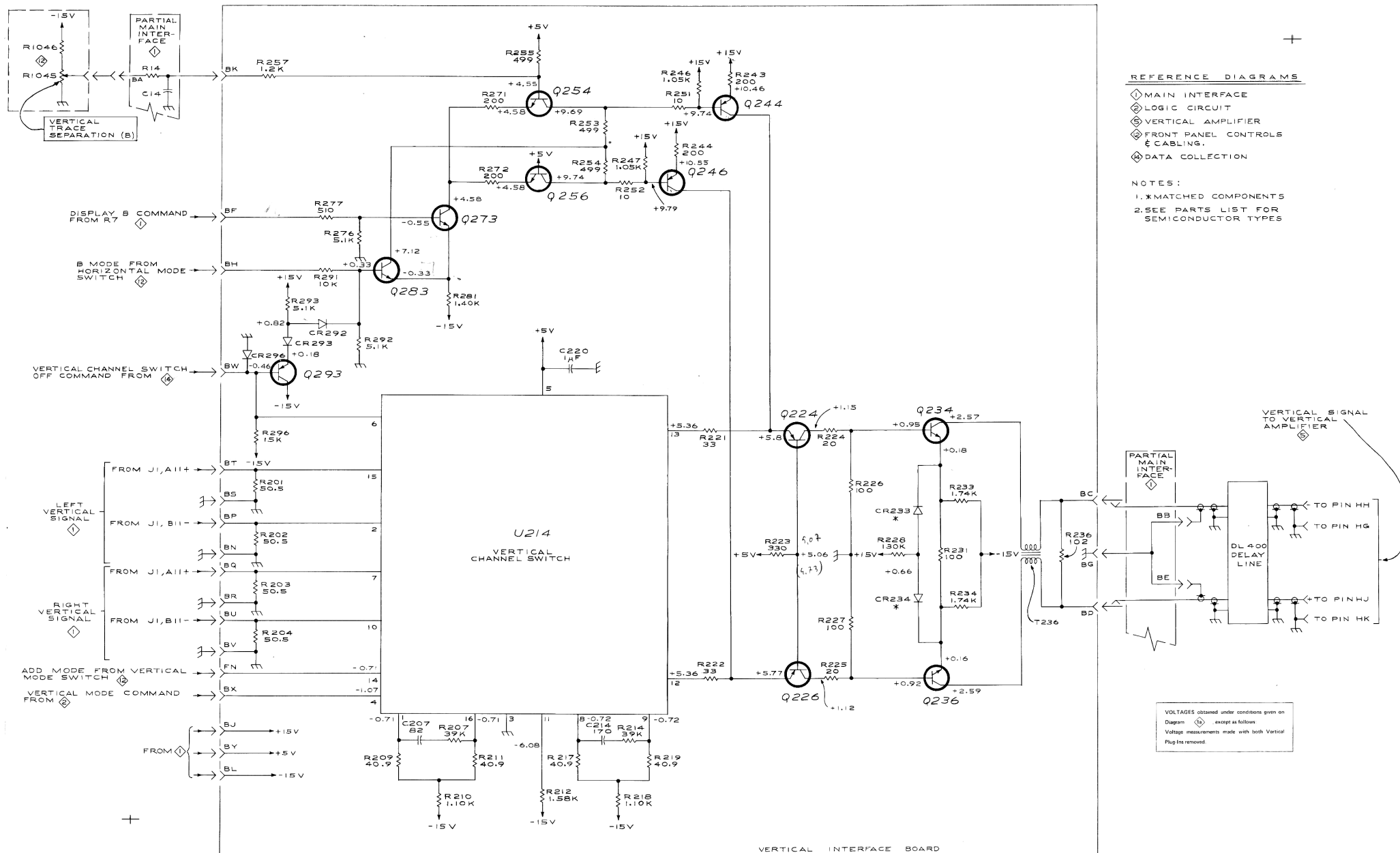


REFERENCE DIAGRAMS

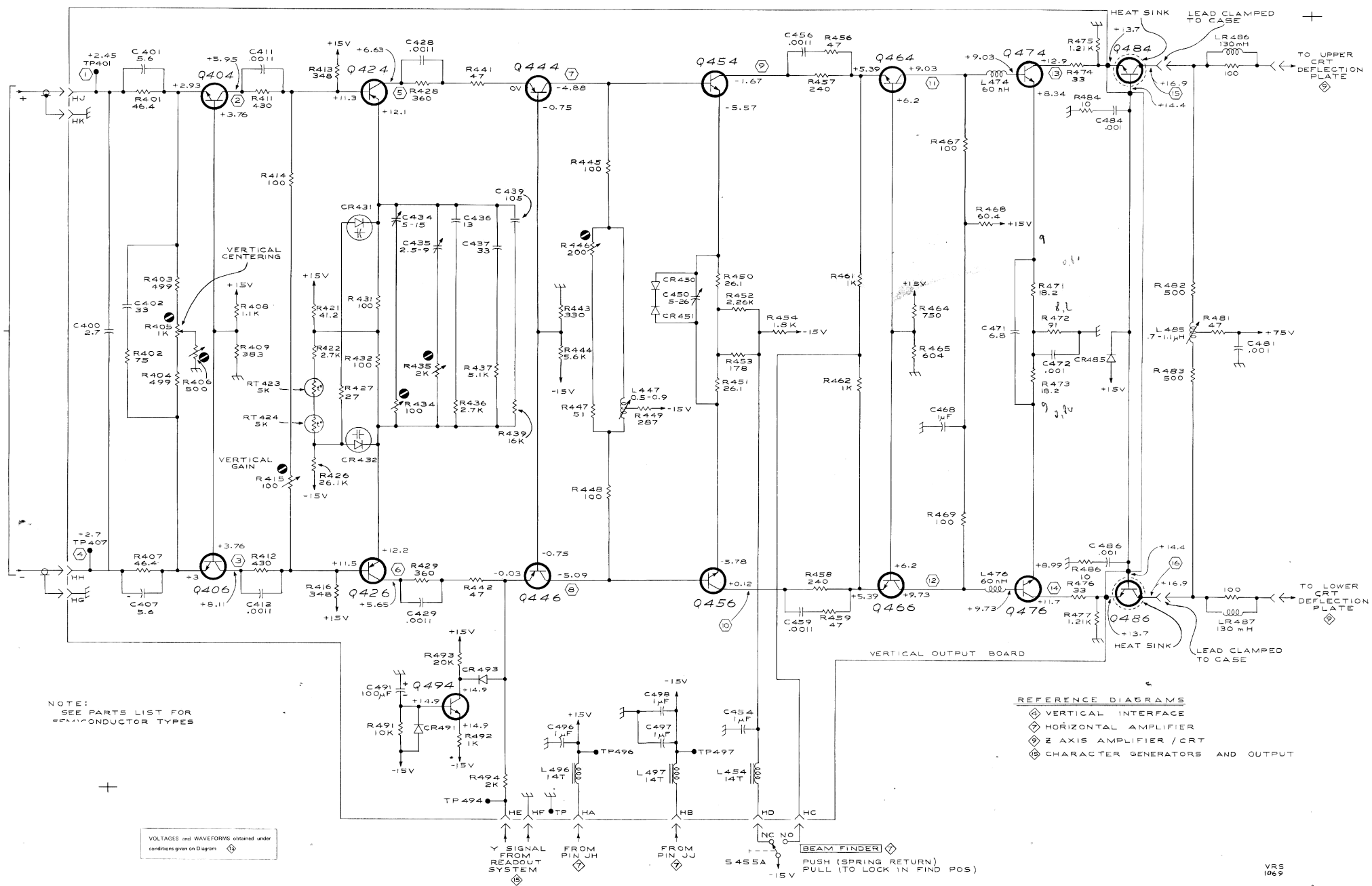
- ① MAIN INTERFACE
- ② LOGIC CIRCUIT
- ③ TRIGGER SELECTOR
- ④ VERTICAL INTERFACE
- ⑤ HORIZONTAL INTERFACE
- ⑥ LOW VOLTAGE REGULATOR
- ⑦ SEQUENCING LOGIC
- ⑧ DATA COLLECTION

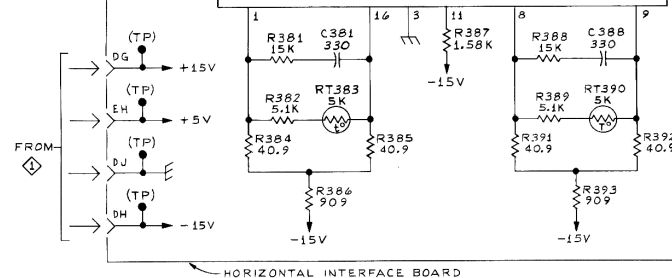
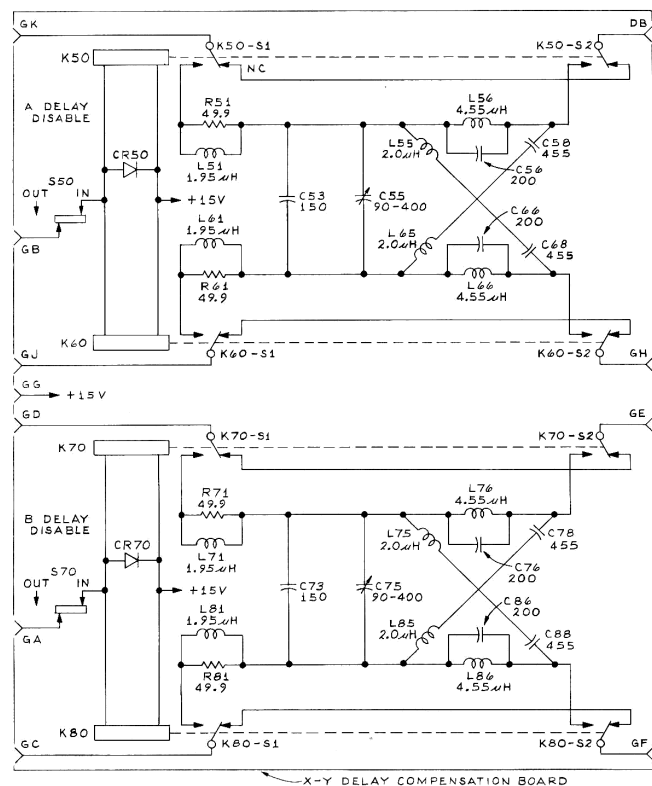
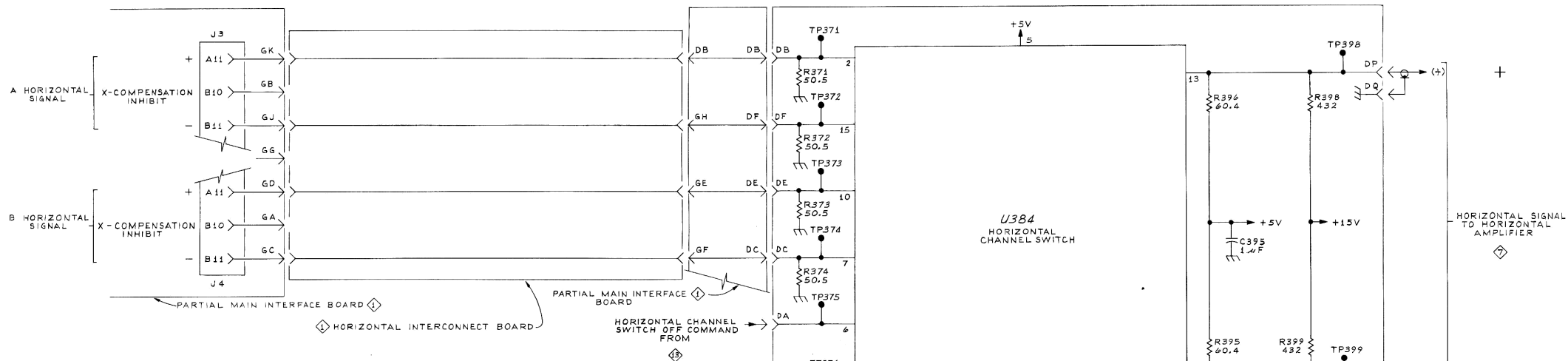






VERTICAL SIGNAL FROM DELAY LINE



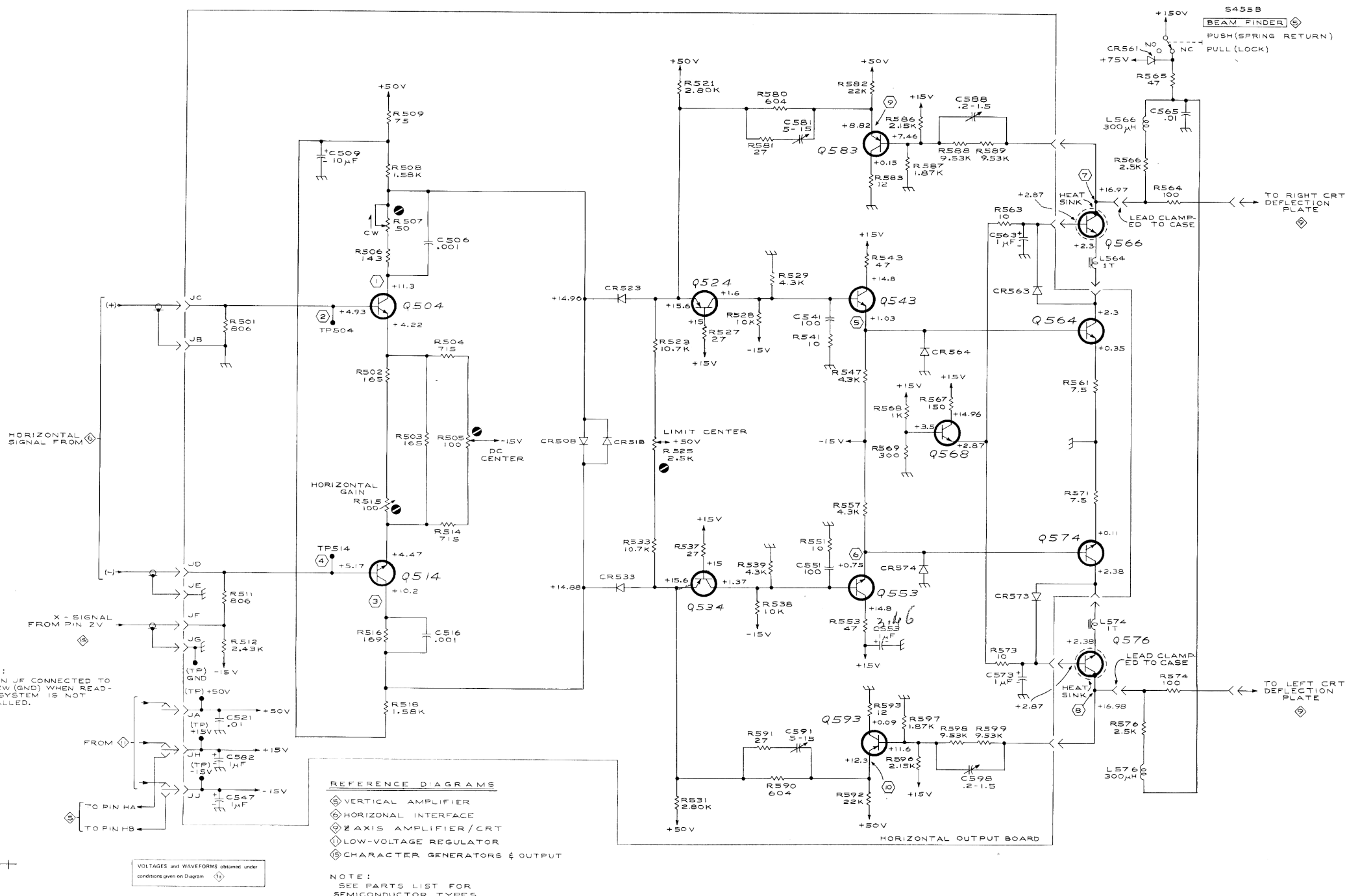


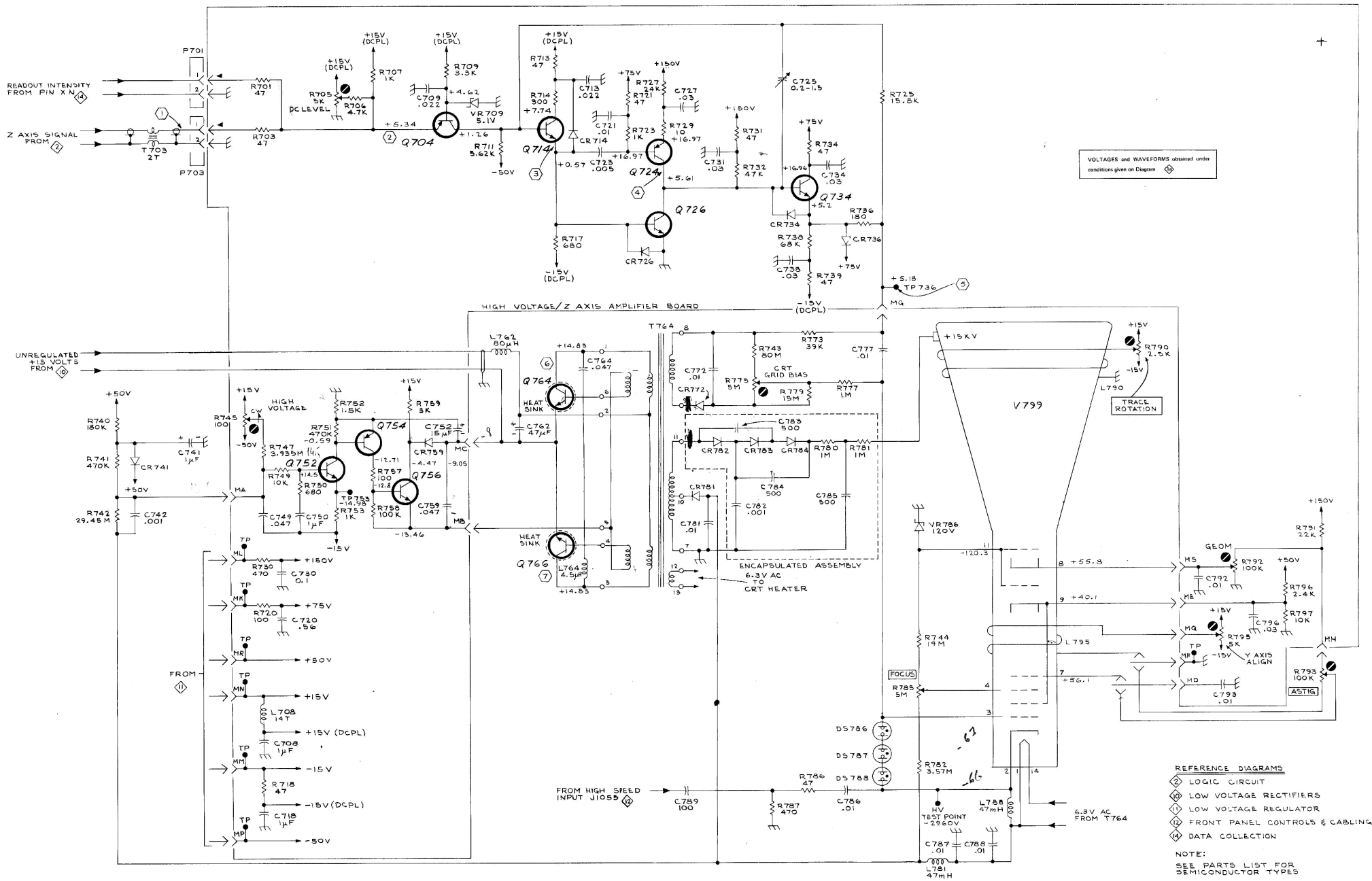
REFERENCE DIAGRAMS

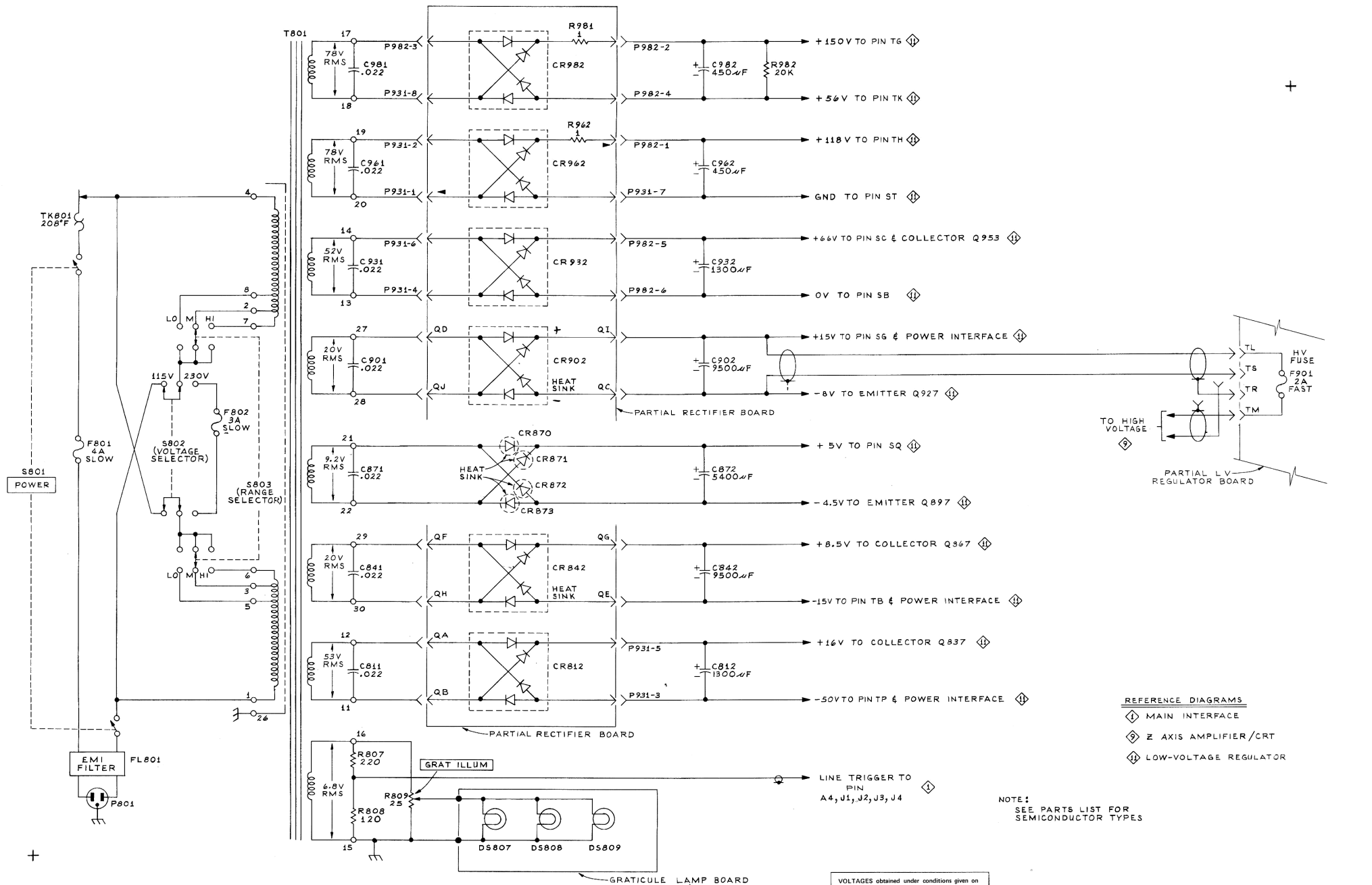
- ① MAIN INTERFACE
- ② LOGIC CIRCUIT
- ③ HORIZONTAL AMPLIFIER
- ④ SEQUENCING LOGIC

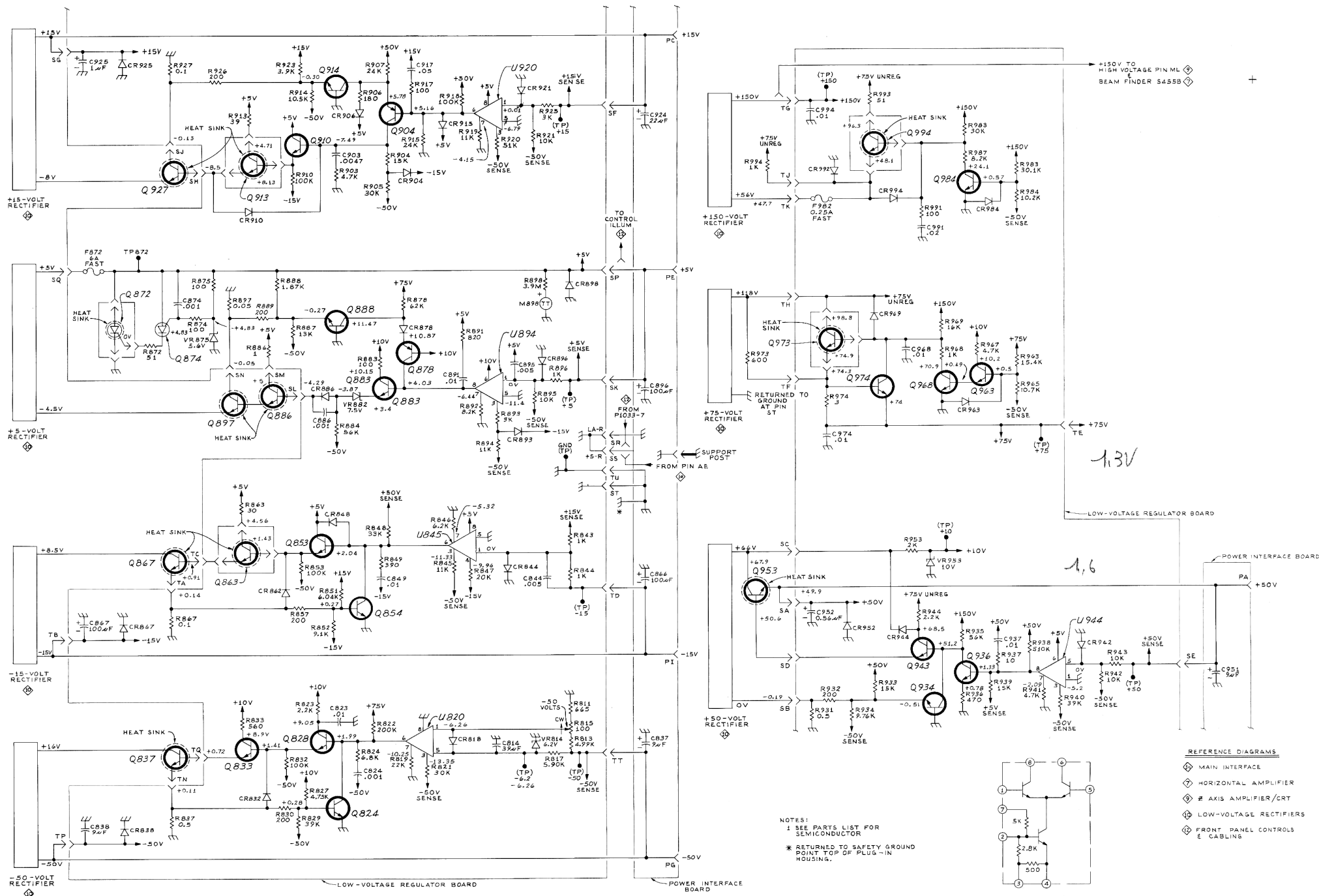
NOTE:
SEE PARTS LIST FOR
SEMICONDUCTOR TYPES

HORIZONTAL INTERFACE ⑥ WLB 1069

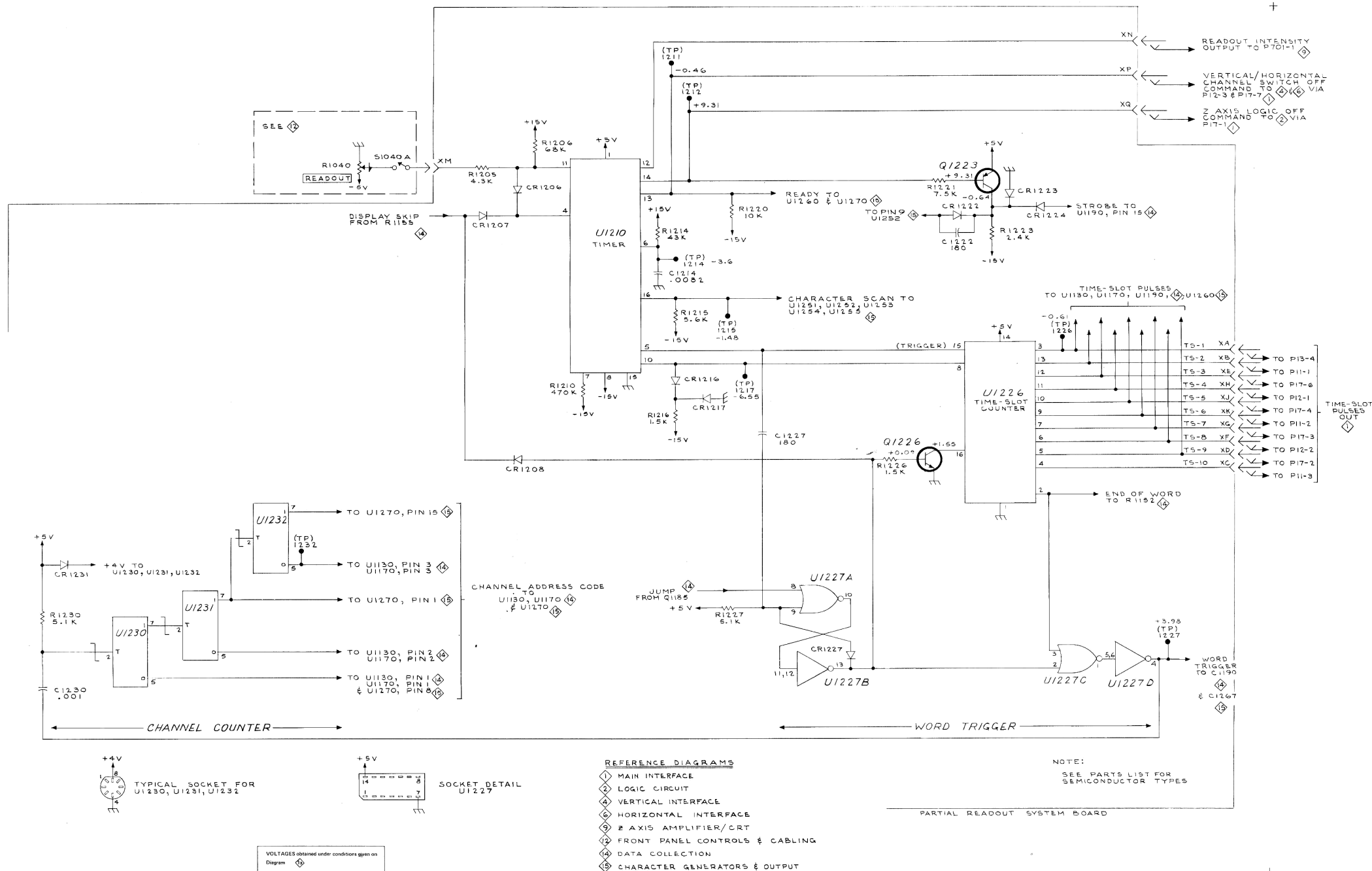


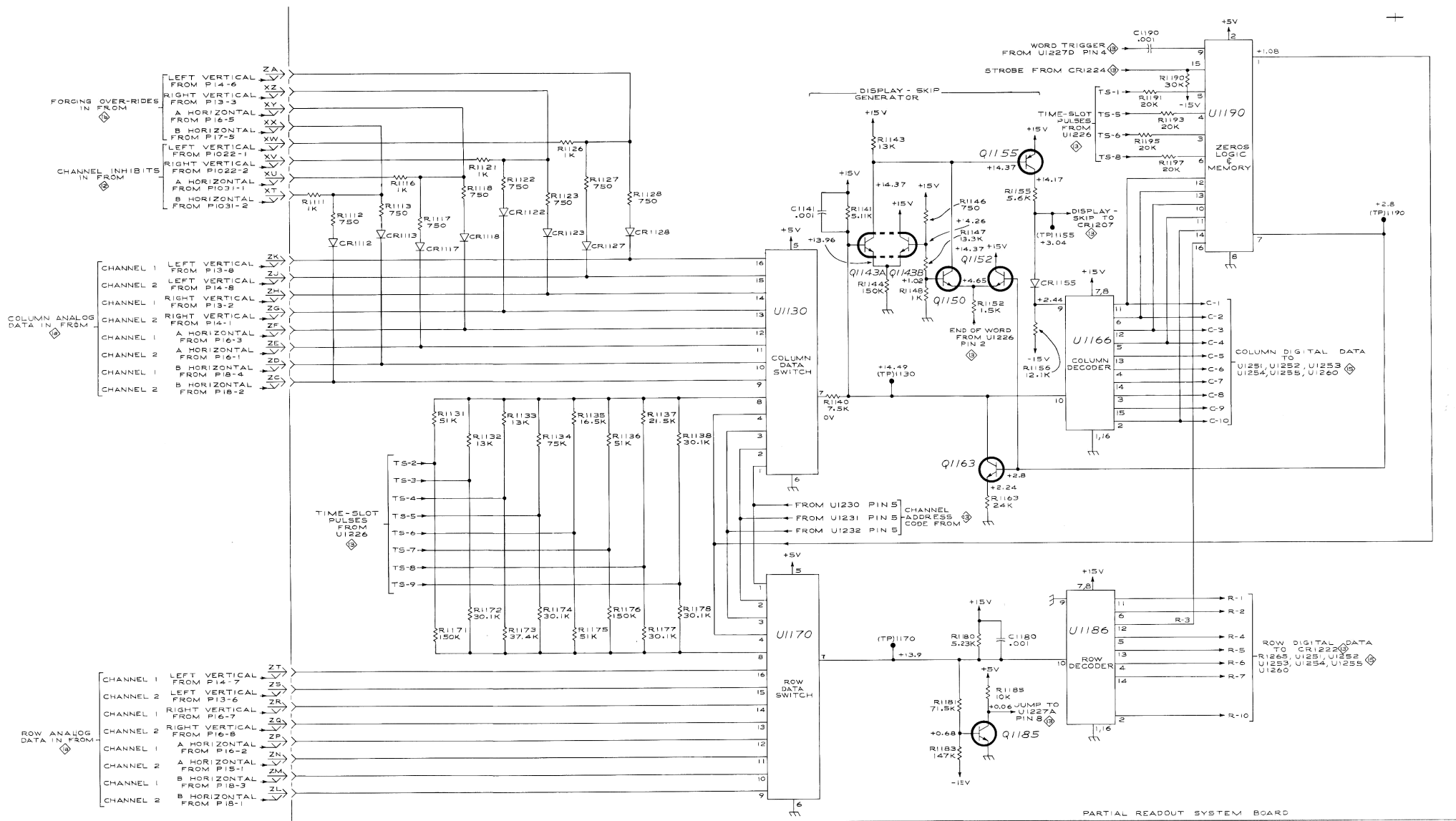












PARTIAL READOUT SYSTEM BOARD

NOTES:

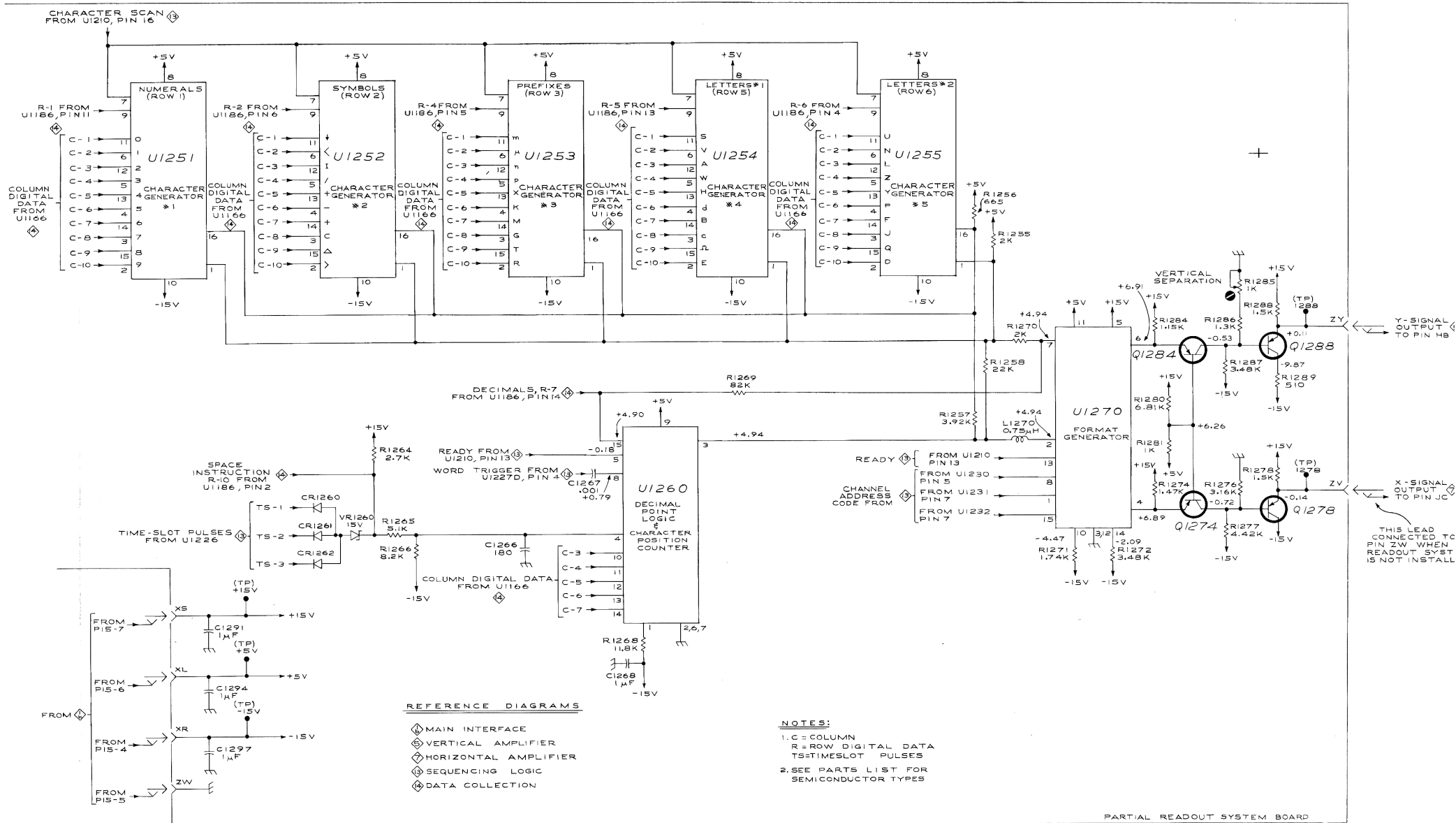
1. C=COLUMN DIGITAL DATA
2. R=ROW DIGITAL DATA
3. TS=TIME SLOT PULSE
4. SEE PARTS LIST FOR SEMICONDUCTOR TYPES

REFERENCE DIAGRAMS

- ① MAIN INTERFACE
- ② FRONT PANEL CONTROLS & CABLING
- ③ SEQUENCING LOGIC
- ④ CHARACTER GENERATOR & OUTPUT

VOLTAGES observed under conditions given on Diagram

1069
VRS



7504

VOLTAGES obtained under conditions given on Diagram

A

CHARACTER GENERATORS & OUTPUT

VRS 1069

MANUAL CHANGE INFORMATION

At Tektronix, we continually strive to keep up with latest electronic developments by adding circuit and component improvements to our instruments as soon as they are developed and tested.

Sometimes, due to printing and shipping requirements, we can't get these changes immediately into printed manuals. Hence, your manual may contain new change information on following pages.

A single change may affect several sections. Sections of the manual are often printed at different times, so some of the information on the change pages may already be in your manual. Since the change information sheets are carried in the manual until ALL changes are permanently entered, some duplication may occur. If no such change pages appear in this section, your manual is correct as printed.

ELECTRICAL PARTS LIST AND SCHEMATIC CORRECTIONS

MAIN INTERFACE Circuit Board Assembly

CHANGE:

R14	315-0242-00	2.4 k Ω	1/4 W	5%
-----	-------------	----------------	-------	----

VERT. OUTPUT Circuit Board Assembly

CHANGE:

R439	317-0133-00	13 k Ω	1/8 W	5%
------	-------------	---------------	-------	----

HORIZONTAL Circuit Board Assembly

ADD:

R578	315-0682-00	6.8 k Ω	1/4 W	5%
------	-------------	----------------	-------	----

CHANGE:

C563	283-0003-00	0.01 μ F	150 V
C573	283-0003-00	0.01 μ F	150 V
C581	281-0123-00	5-25 pF, Var	

HIGH VOLTAGE - Z AXIS AMP. Circuit Board Assembly

CHANGE:

R736	301-0151-00	150 Ω	1/2 W	5%
------	-------------	--------------	-------	----

ADD:

C752	290-0135-00	15 μ F	Elect.	20 V
R752	315-0152-00	1.5 k Ω	1/4 W	5%

LOW VOLTAGE REGULATOR Circuit Board Assembly

CHANGE:

C874	283-0192-00	0.47 μ F	
------	-------------	--------------	--

READOUT Circuit Board Assembly

DELETE:

CR1260	152-0185-00	Silicon	Replaceable by 1N4152
CR1261	152-0185-00	Silicon	Replaceable by 1N4152
CR1262	152-0185-00	Silicon	Replaceable by 1N4152

CHANGE:

R1214	317-0393-00	39 k Ω	1/8 W	5%
-------	-------------	---------------	-------	----

ADD:

VR1261	152-0405-00	Zener	1 W, 15 V, 5%	Tek Spec
VR1262	152-0405-00	Zener	1 W, 15 V, 5%	Tek Spec
R1260	317-0012-00	1 k Ω	1/8 W	5%

HORIZONTAL Circuit Board Assembly

CHANGE:

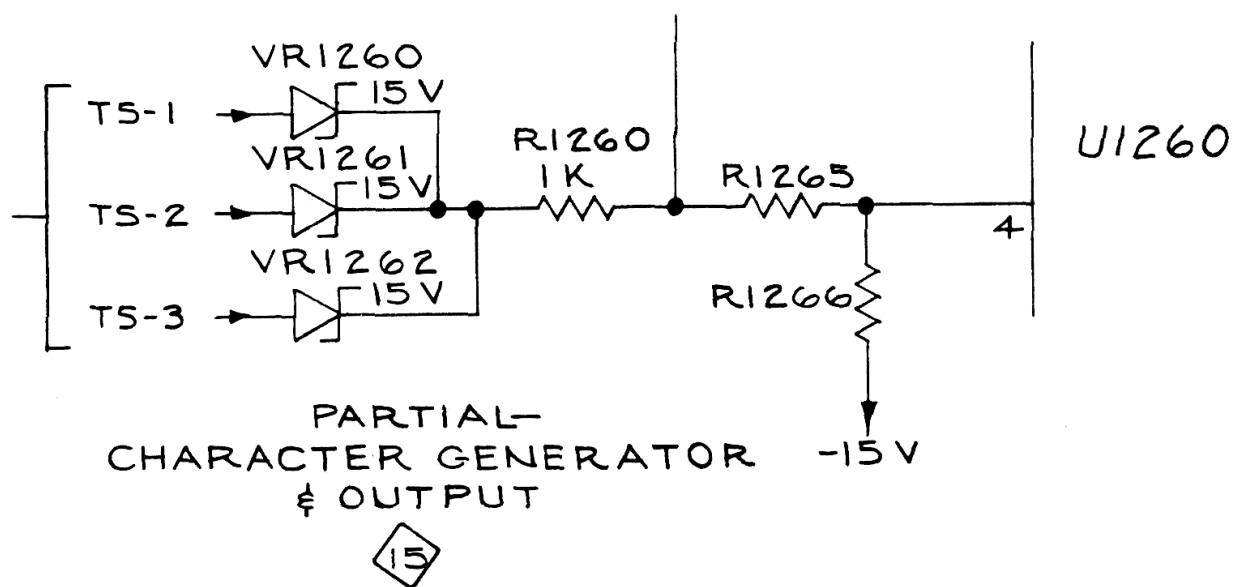
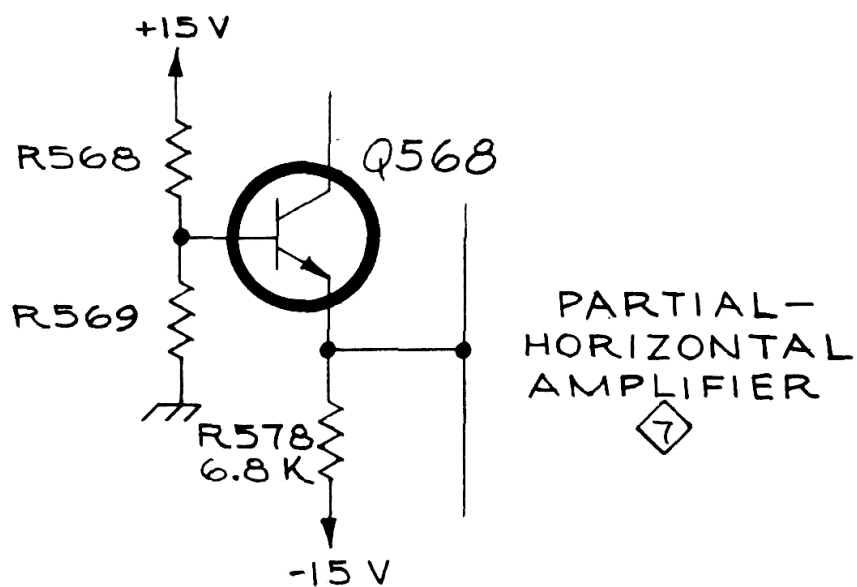
DS1031	150-0057-01	Incandescent
DS1032	150-0057-01	Incandescent
DS1033	150-0057-01	Incandescent
DS1034	150-0057-01	Incandescent

VERT. MODE Circuit Board Assembly

CHANGE:

DS1021	150-0057-01	Incandescent
DS1025	150-0057-01	Incandescent
DS1027	150-0057-01	Incandescent
DS1029	150-0057-01	Incandescent

SCHEMATIC CORRECTIONS



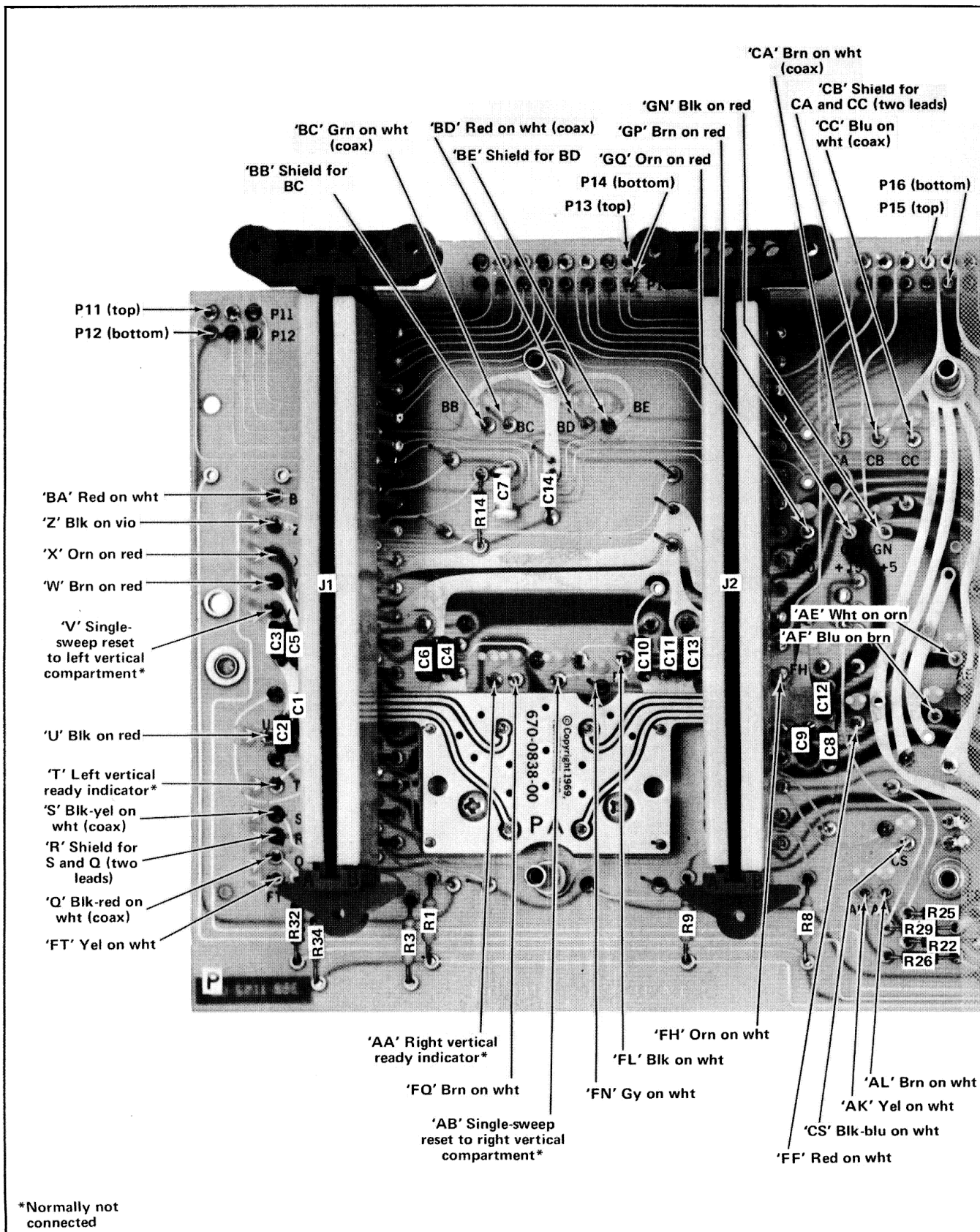


Fig. 4-7. Partial Main Interface circuit board.

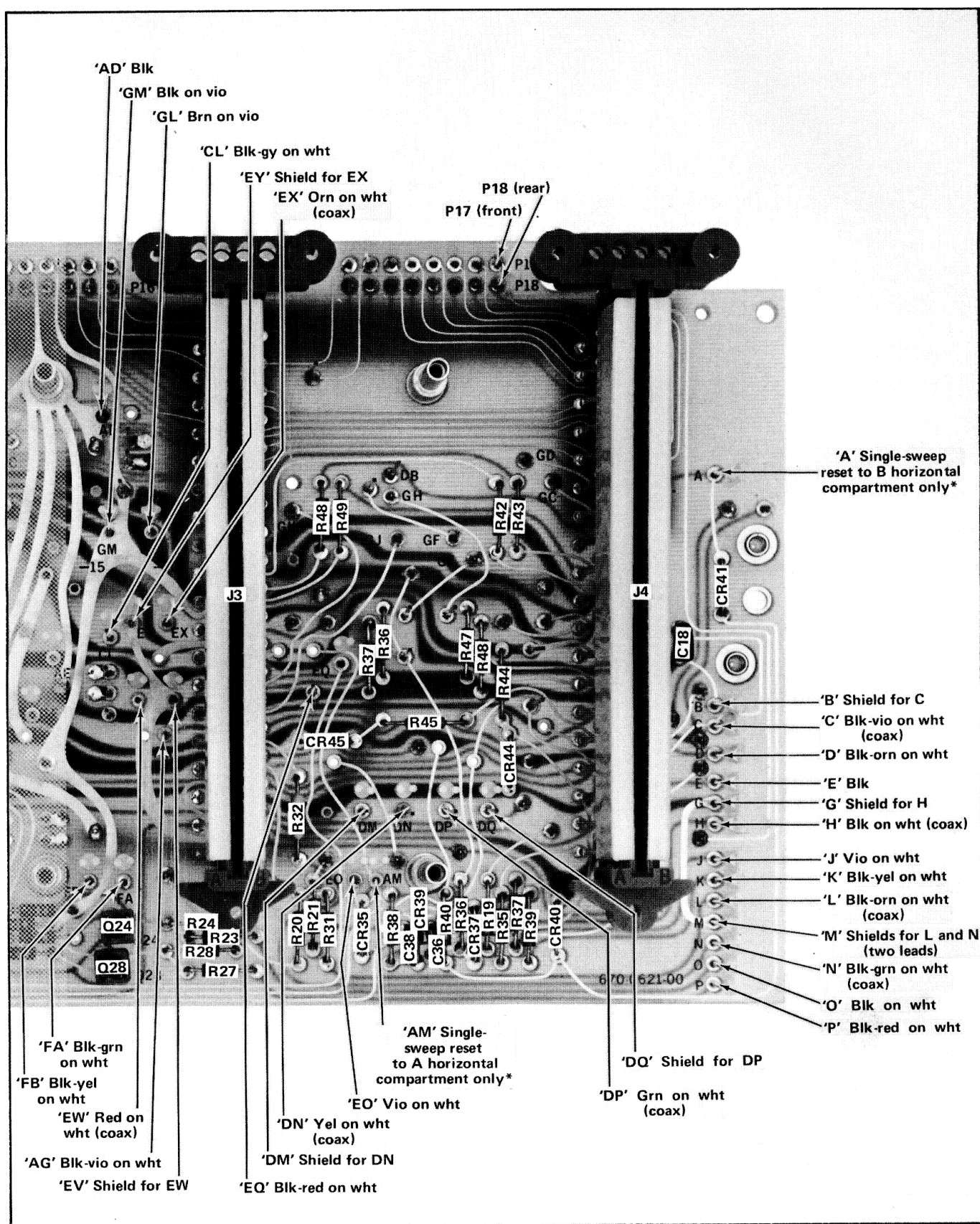


Fig. 4-8. Partial Main Interface circuit board.

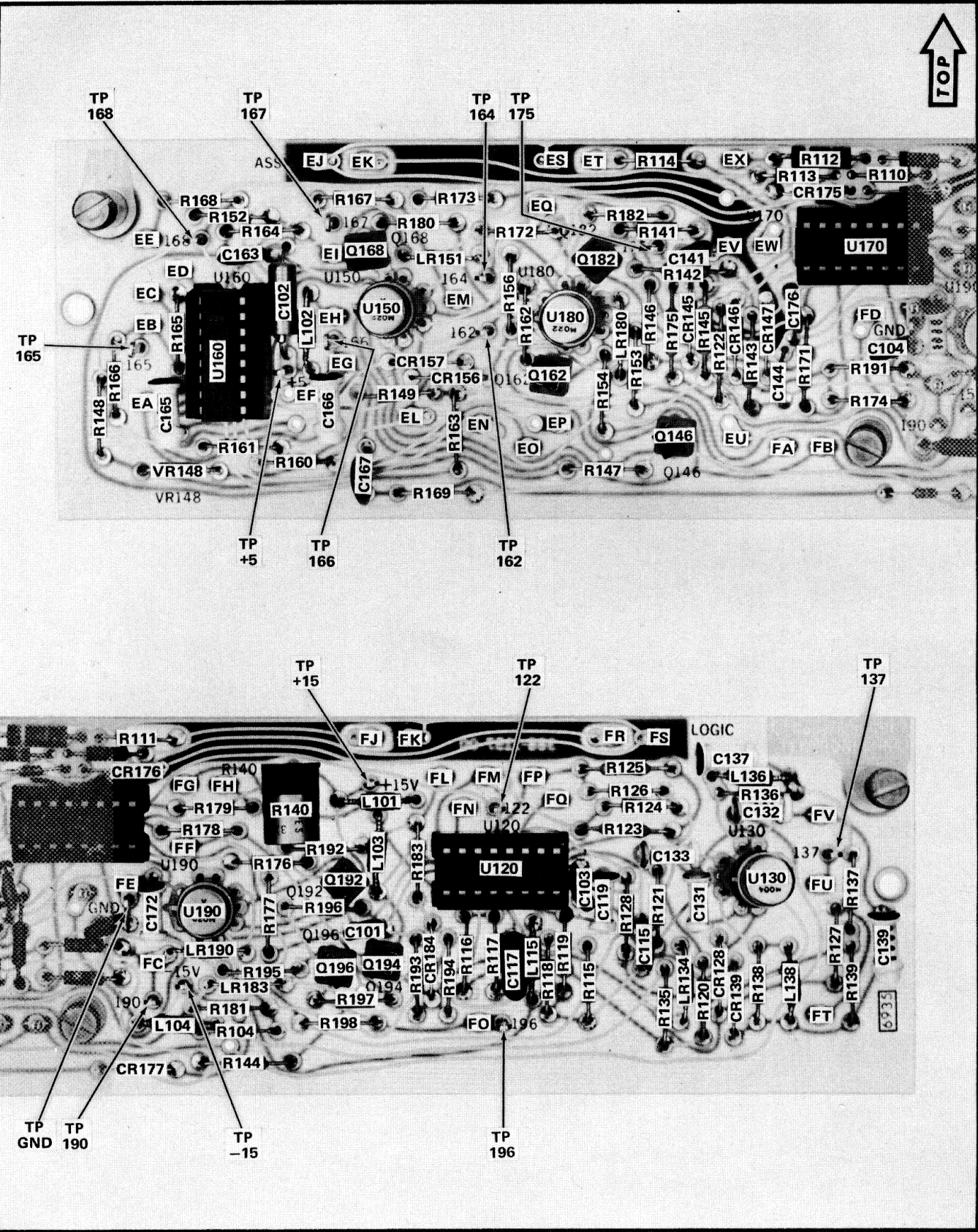


Fig. 4-9. Logic circuit board.

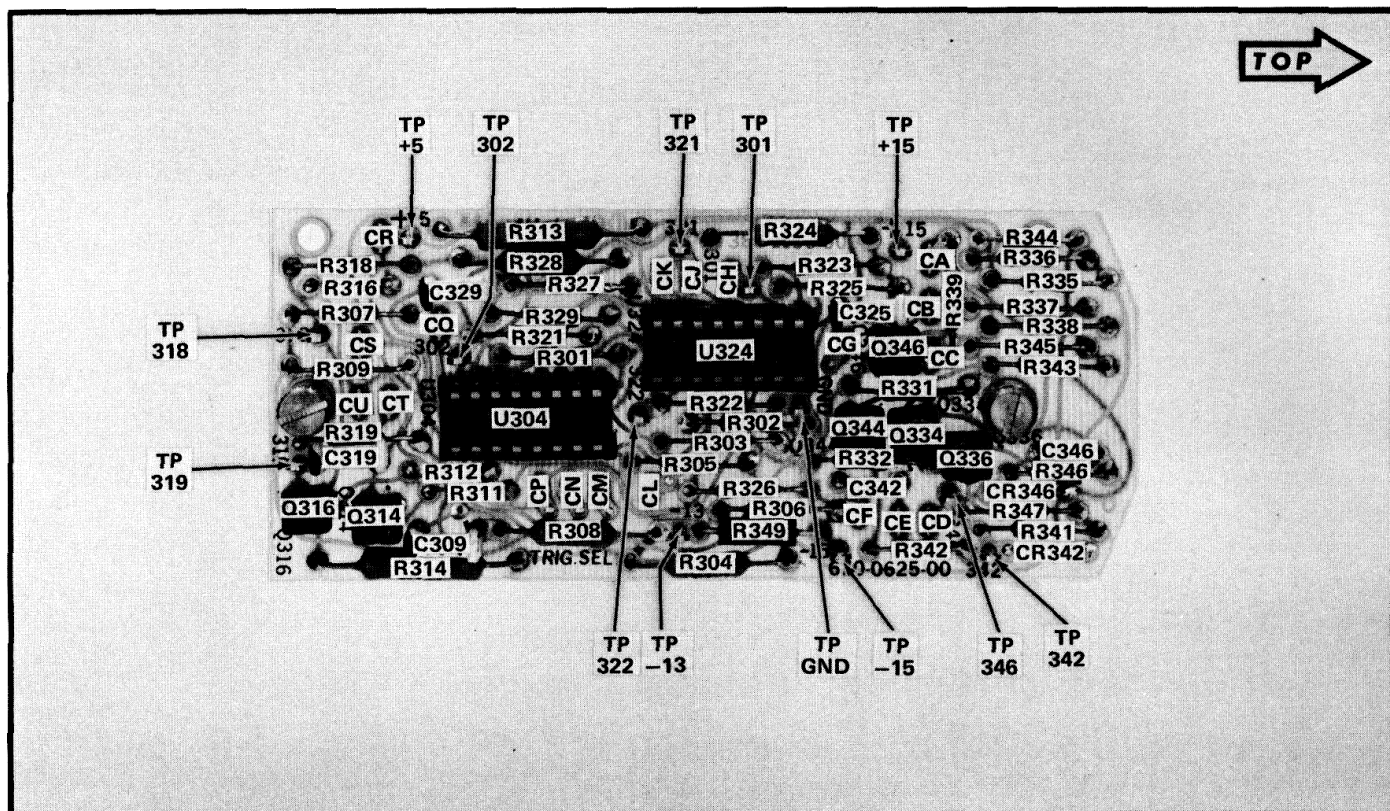


Fig. 4-10. Trigger Selector circuit board.

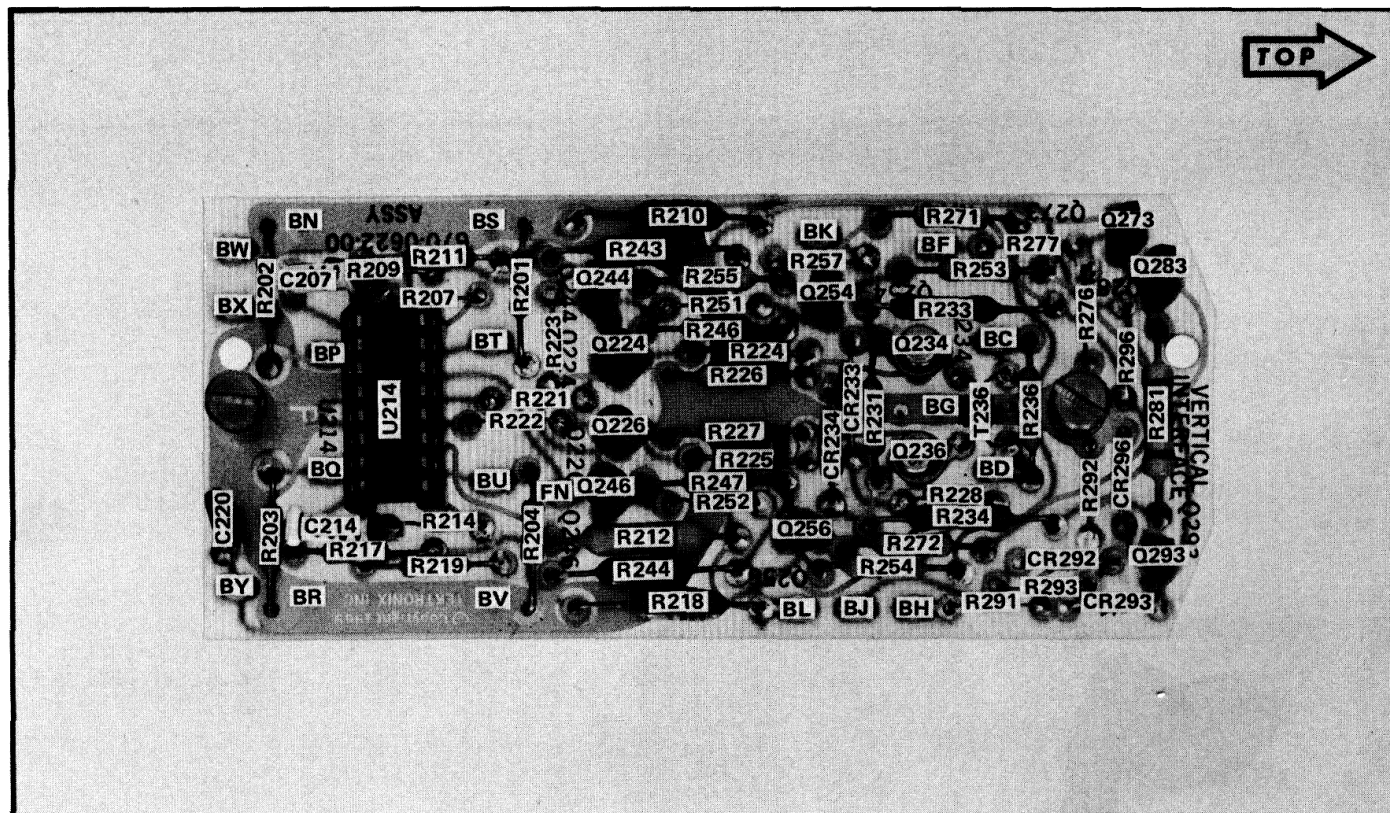


Fig. 4-11. Vertical Interface circuit board.

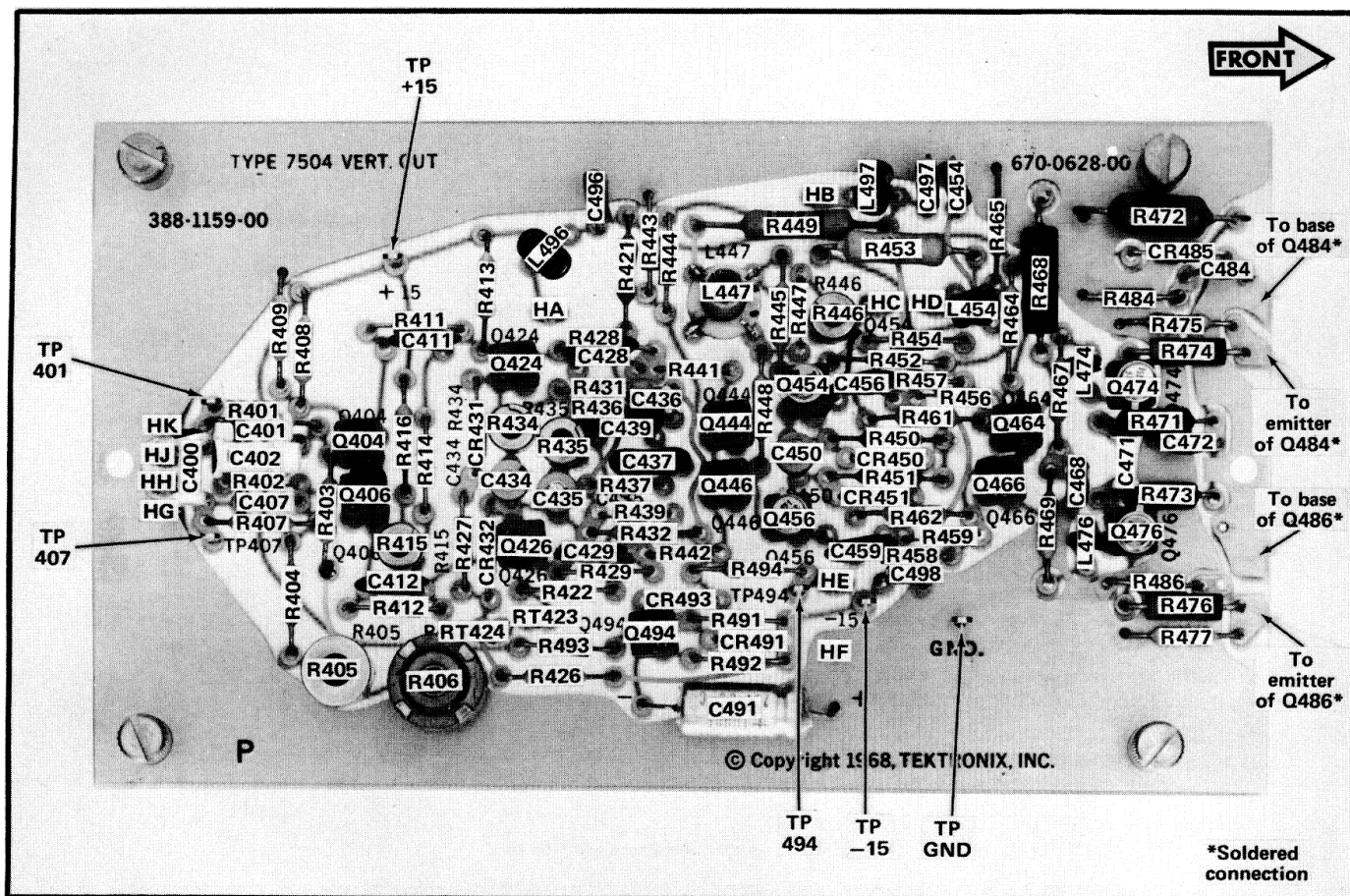


Fig. 4-12. Vertical Output circuit board.

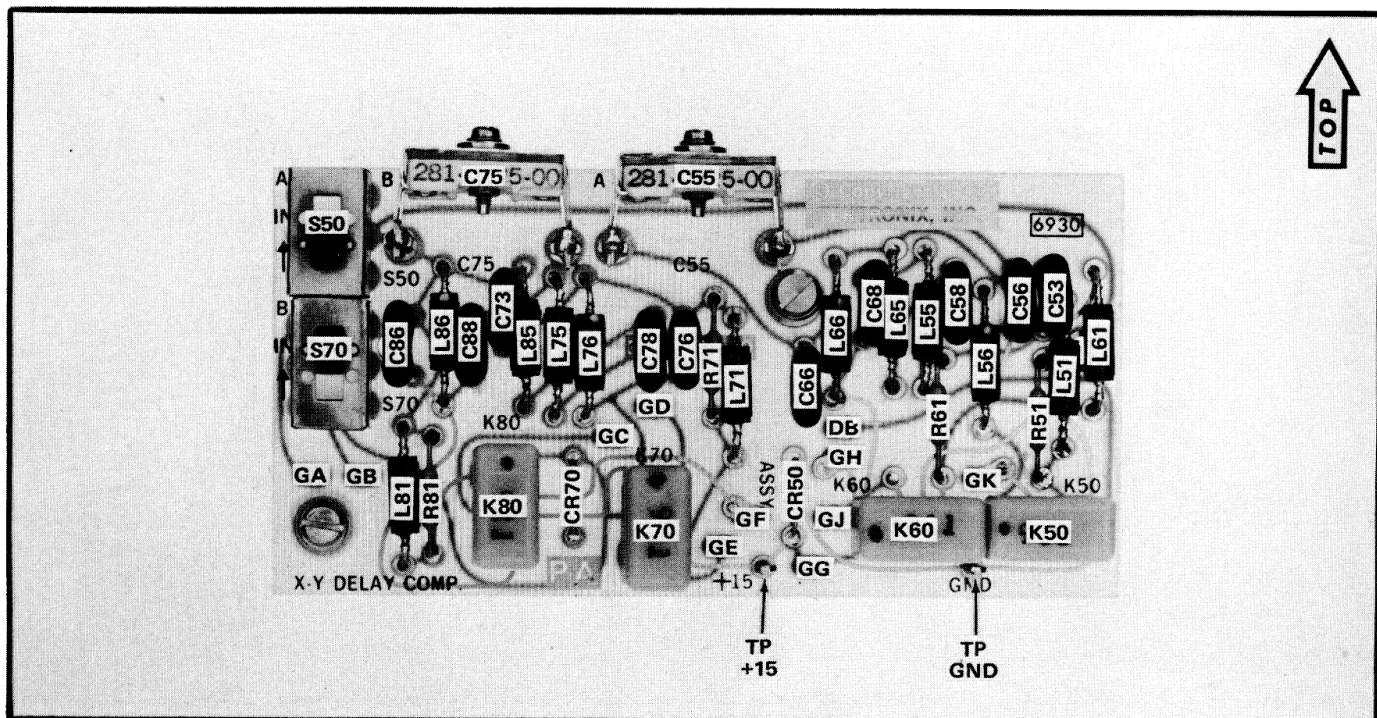


Fig. 4-13. X-Y Delay Compensation circuit board (optional).

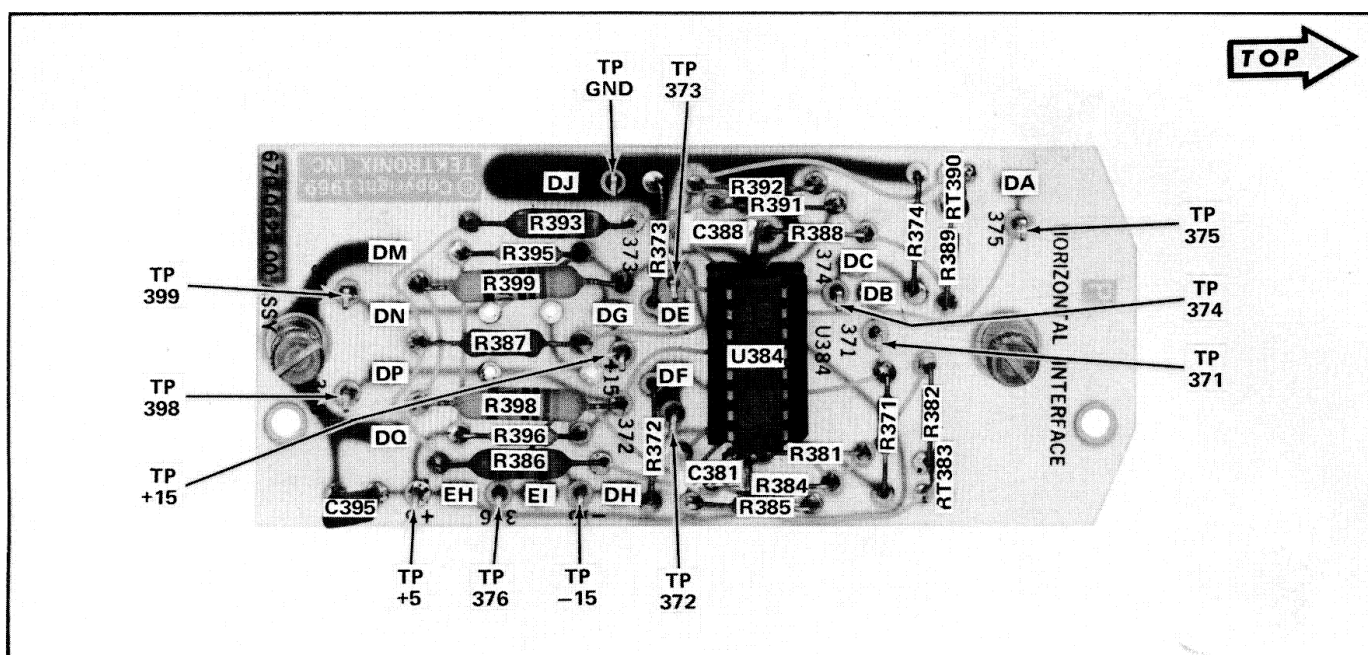


Fig. 4-14. Horizontal Interface circuit board.

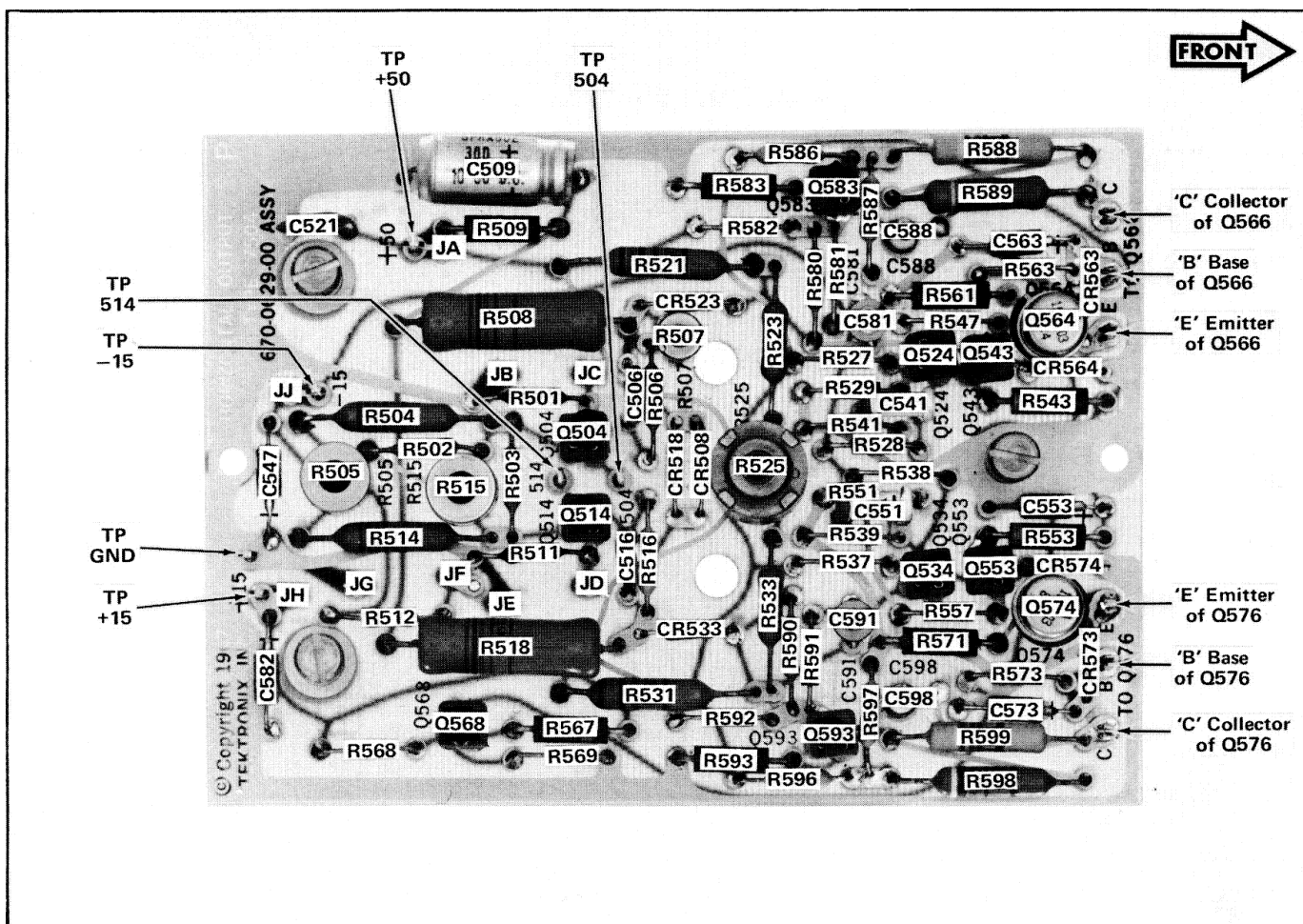


Fig. 4-15. Horizontal Output circuit board.

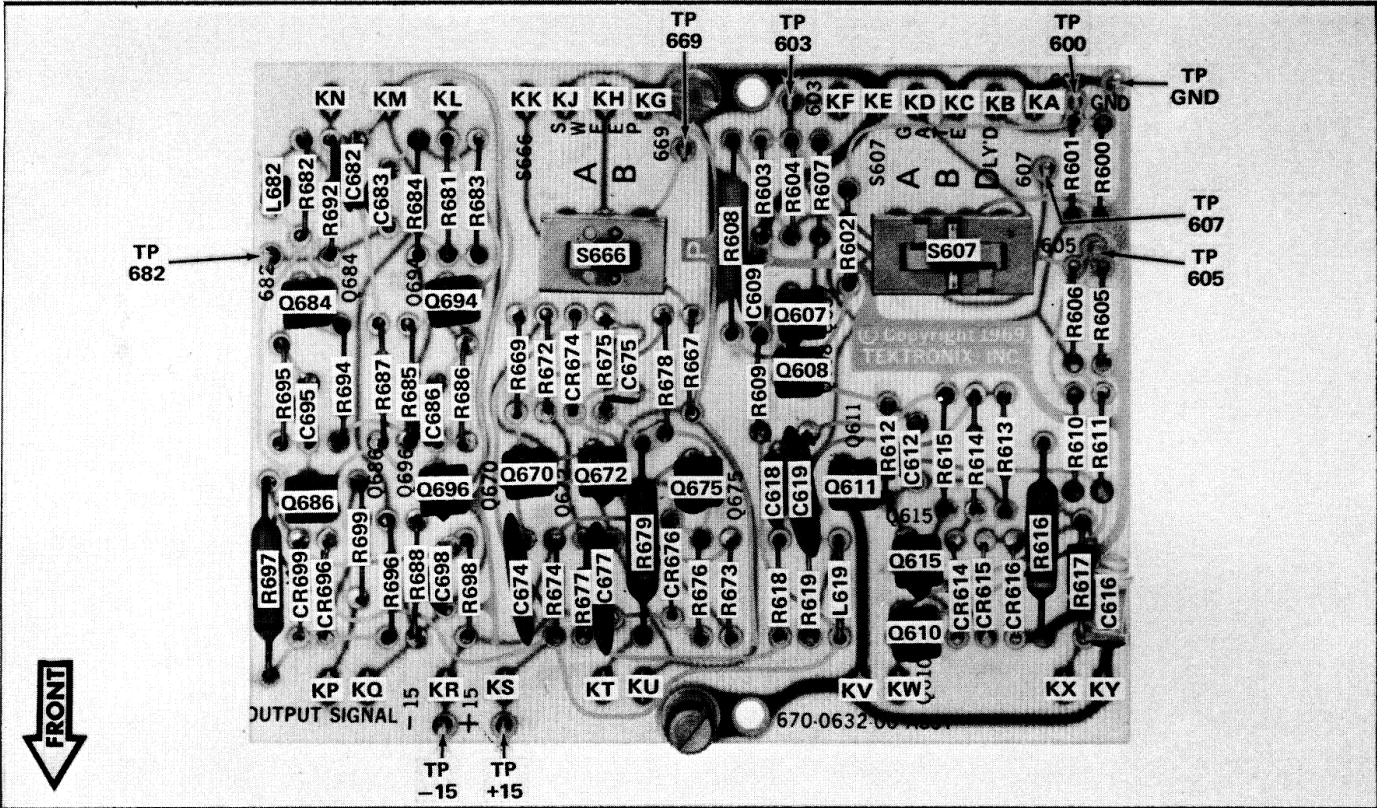


Fig. 4-16. Output Signal circuit board.

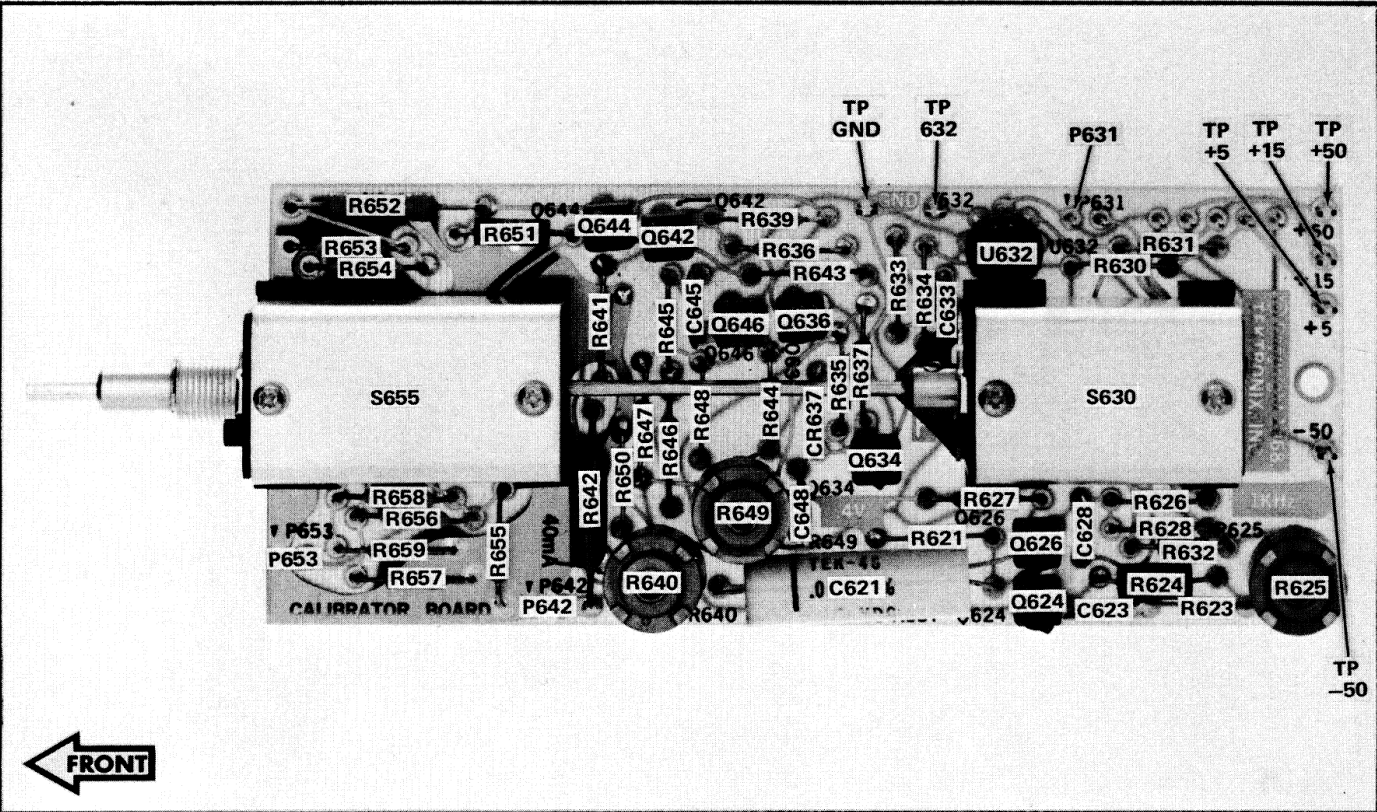


Fig. 4-17. Calibrator circuit board/switch assembly.

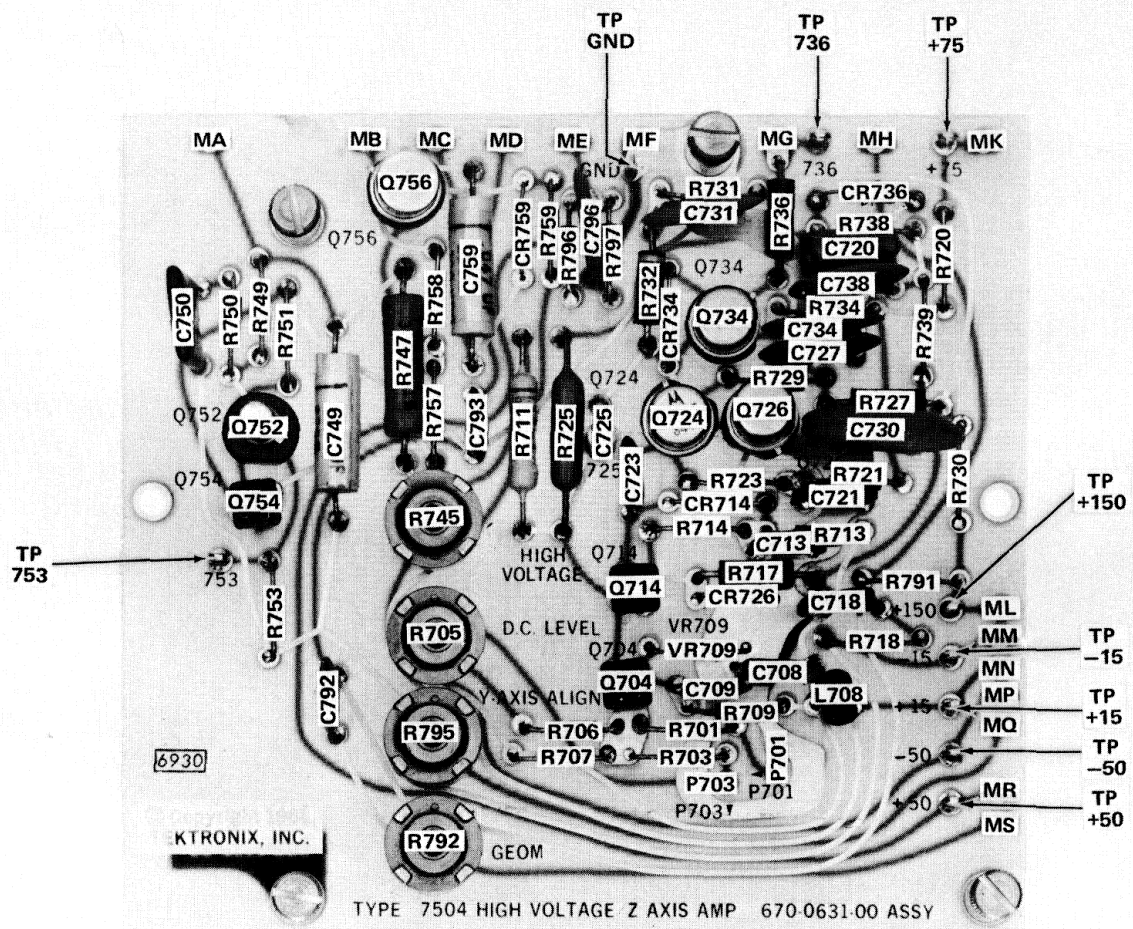


Fig. 4-18. High Voltage/Z-Axis Amplifier circuit board.

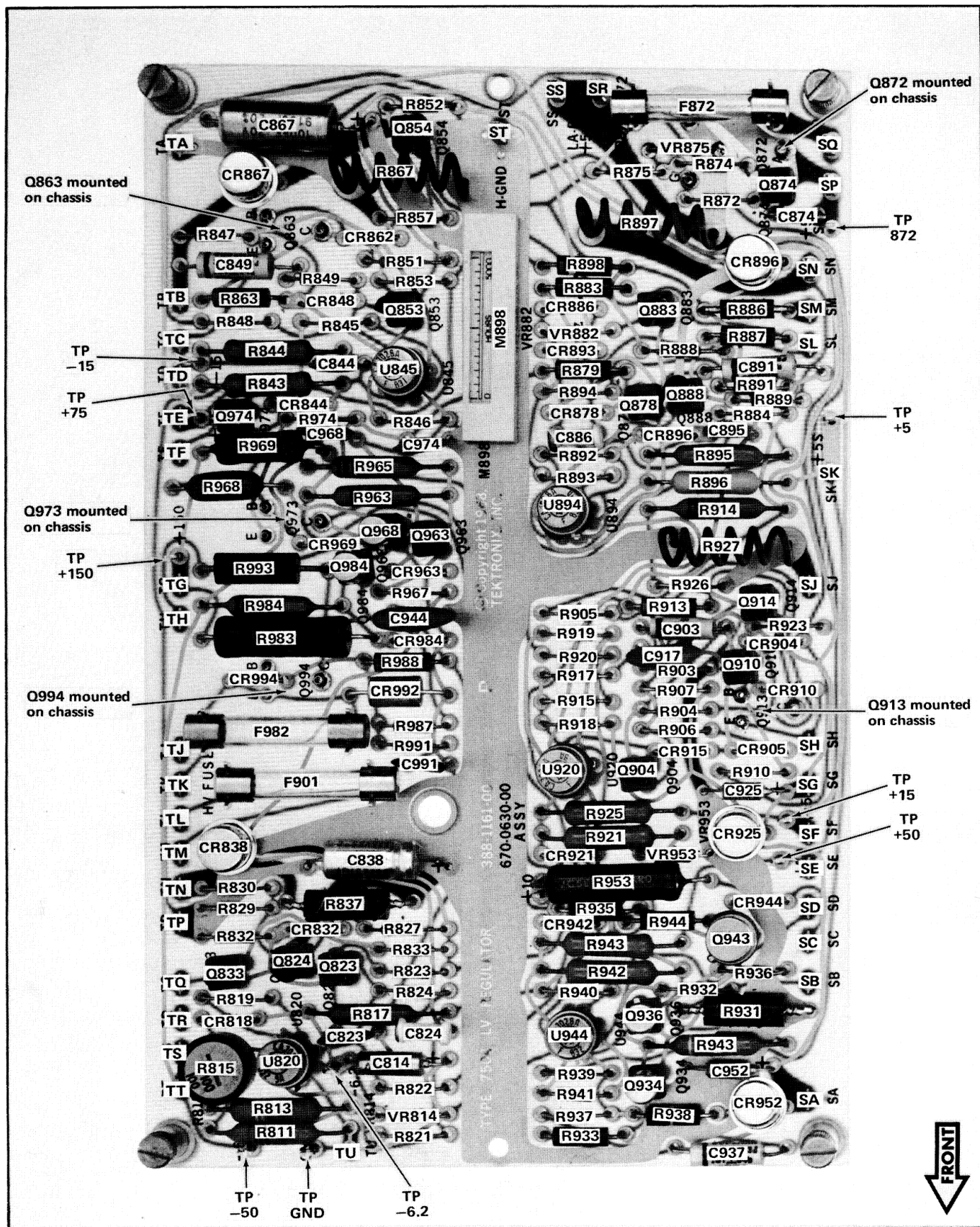


Fig. 4-19. LV Regulator circuit board.

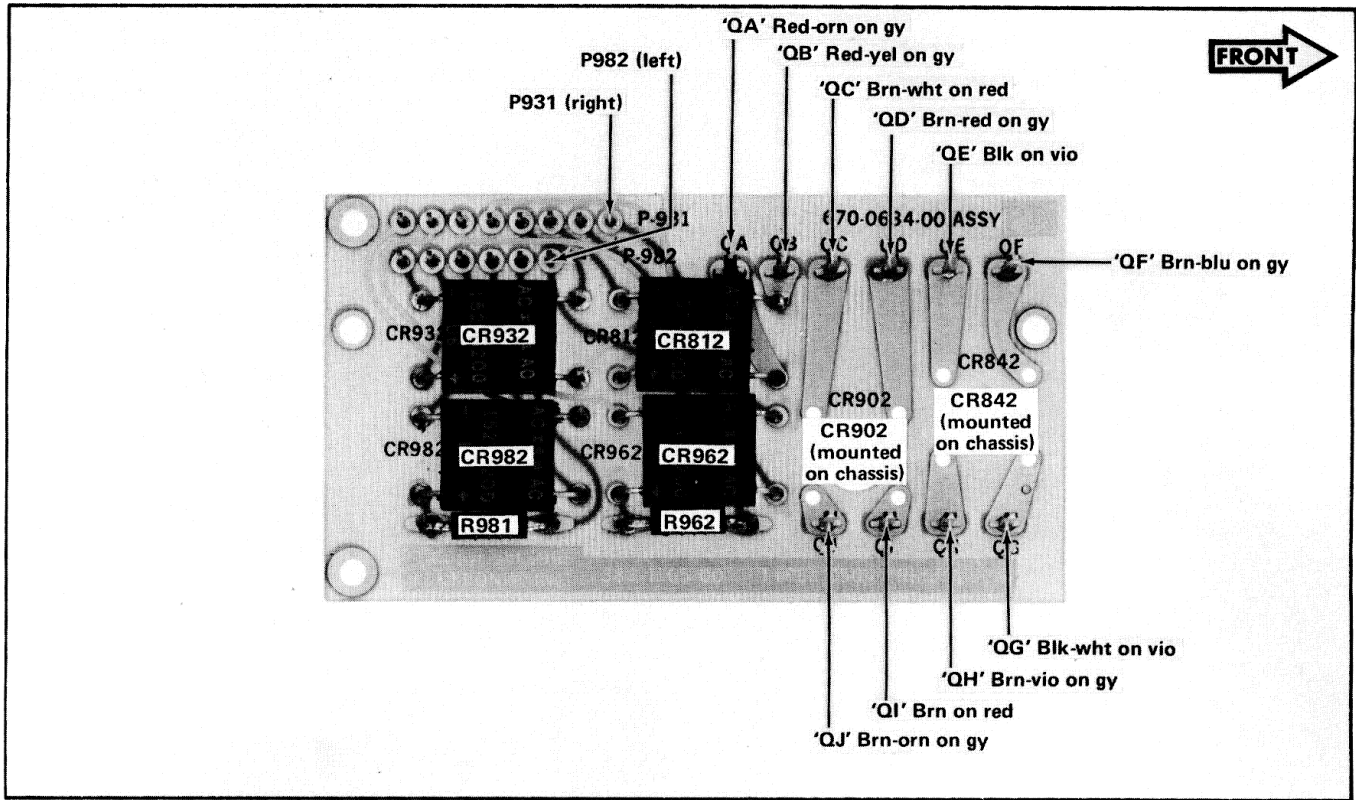


Fig. 4-20. Rectifier circuit board.

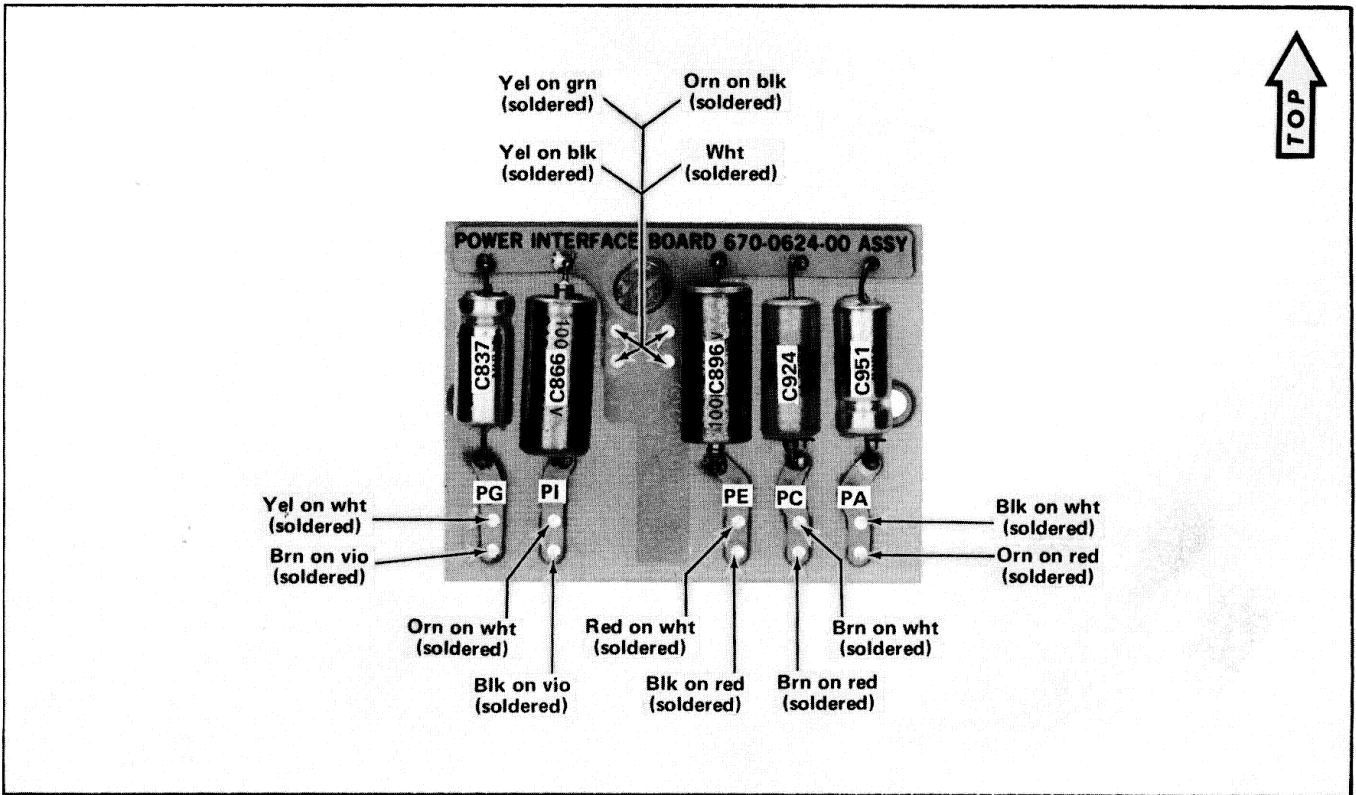


Fig. 4-21. Power Interface circuit board.

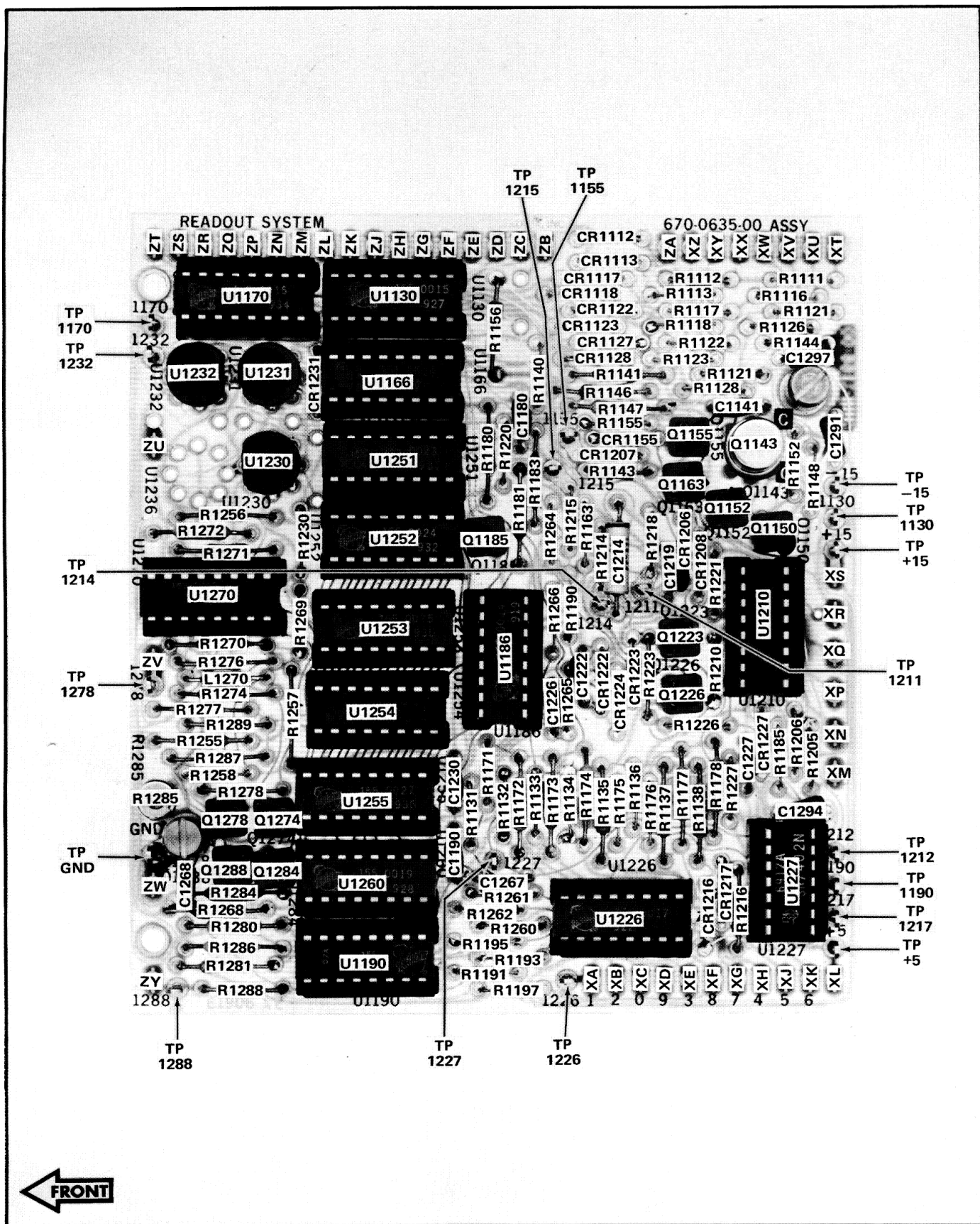


Fig. 4-22. Readout System circuit board.