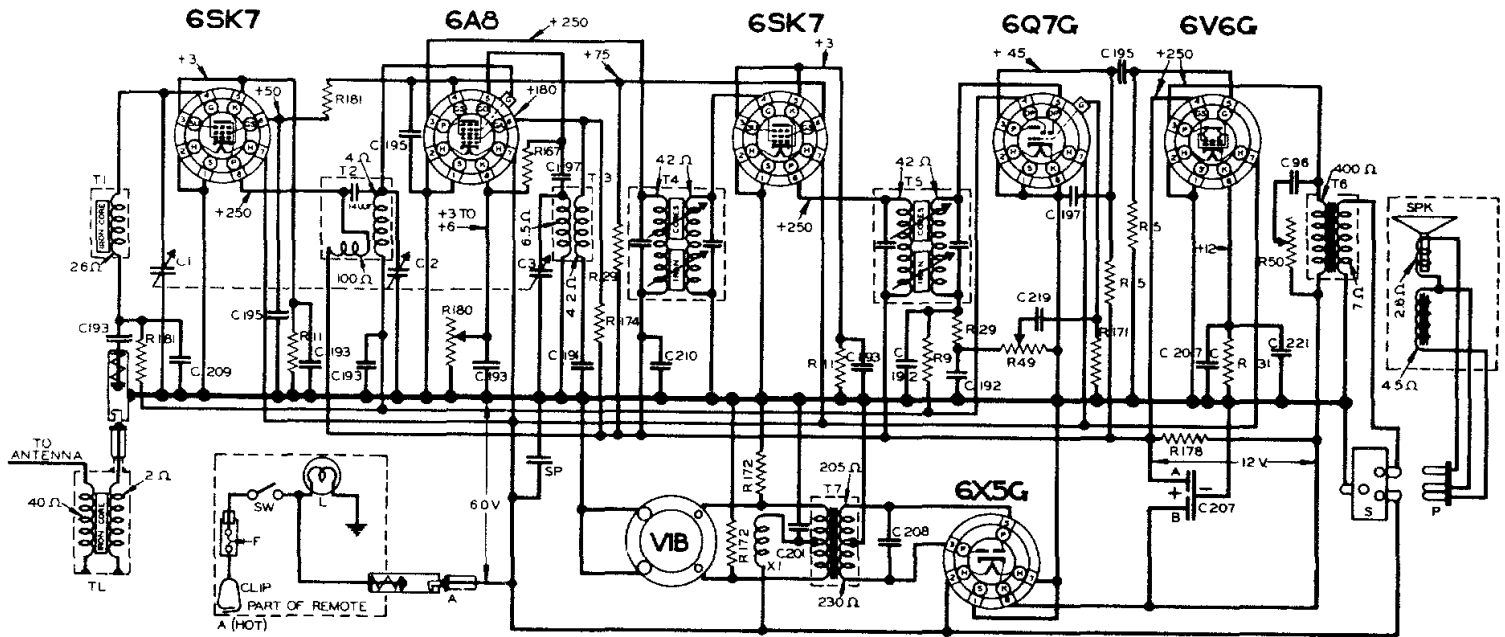


# ARVIN CAR RADIO CHASSIS RE-60

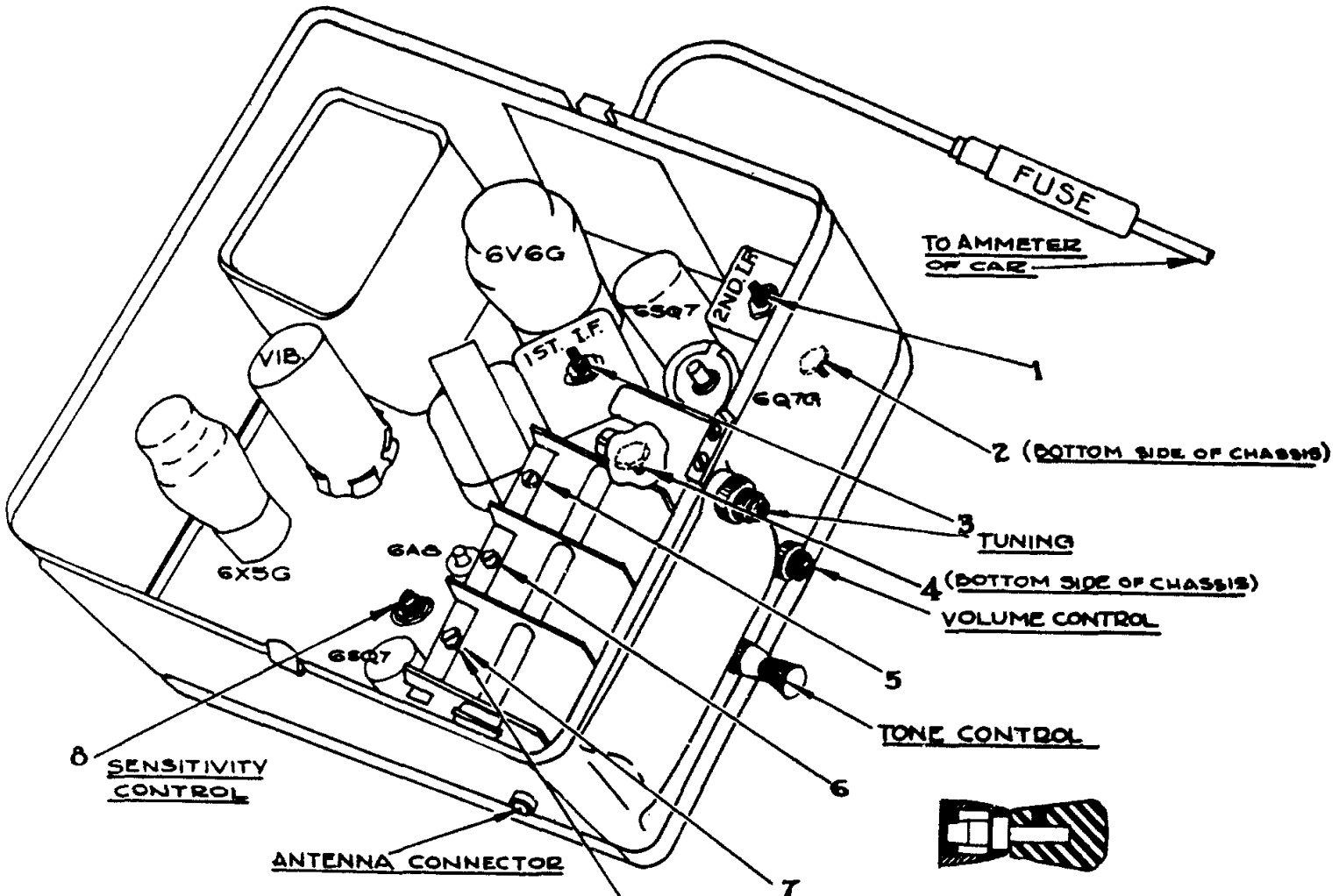


NOTE - ALL VOLTAGES GIVEN FOR "A" INPUT OF 6 VOLTS. ALLOW ± 10% ON ALL VOLTAGES & RESISTANCES OF WINDING



RESISTORS			CONDENSERS			CHOKES & TRANSFORMERS			MISCELLANEOUS UNITS		
QTY	VALUE	PART NO.	QTY	VALUE	PART NO.	QTY	TYPE	PART NO.	SYMBOL	DESCRIPTION	PART NO.
1	500K	17-2070	1	THREE	17-1724	1	TRANSFORMER	00-18300	F	FUSE - 30AMP	17-2226
1	1M	17-2080	2	GANG	17-1724	1	ANTENNA COIL	00-18300	L	DIAL LIGHT M.B. - MAZDA NO. 51	17-13604
1	2M	17-2090	3	VARIABLE	17-1724	2	R.F. COIL	00-18301	P	SPEAKER PLUG	17-4780
25	20K	17-2060	16	.05	17-14191	3	OSCILLATOR COIL	00-18302	S	SPEAKER SOCKET	17-15831
31	20K	17-2060	104	.01	17-4226	4	FIRST I.F. COIL	00-18303	SP	SPEAKER ASSEMBLY	17-1630
49	500K	17-14334	181	.01	17-14273	5	SECOND I.F. COIL	00-18304	SW	POWER SWITCH	
50	100K	17-14305	192	.00025	17-14273	6	OUTPUT TRANS	00-18305	SP	SPARK PLATE	
182	50K	17-14281	183	.05	17-4224	7	POWER TRANS	00-18306	TL	TRANSMISSION LINE	00-18307
171	15M	17-14281	195	.05	17-14274				VIB	VIBRATOR	17-14247
174	20K	17-14281	197	.0001	17-14274						
176	1200	17-14281	201	5	17-14281						
172	50K	17-14281	202	.0001	17-14281						
180	2000	17-14303	207B	15MF	17-14289						
181	100K	17-14303	207C	20MF	25						
			306	.001	17-14300						
			307	.00125	17-14305						
			310	.01	17-14304						
			321	.0002	17-14304						
			319	.003	17-14318						

INTERMEDIATE FREQUENCY 170 K.C.  
FREQUENCY RANGE 1570 TO 540 K.C.  
NOBLITT-SPARKS INDUSTRIES, INC.,  
COLUMBUS, INDIANA



ADJUST THIS ANTENNA BALANCING SCREW AFTER INSTALLATION OF THE RADIO ON THE CAR. TUNE IN A WEAK STATION FROM 1200 TO 1400 K.C. AND TURN UNTIL MAXIMUM VOLUME IS OBTAINED.