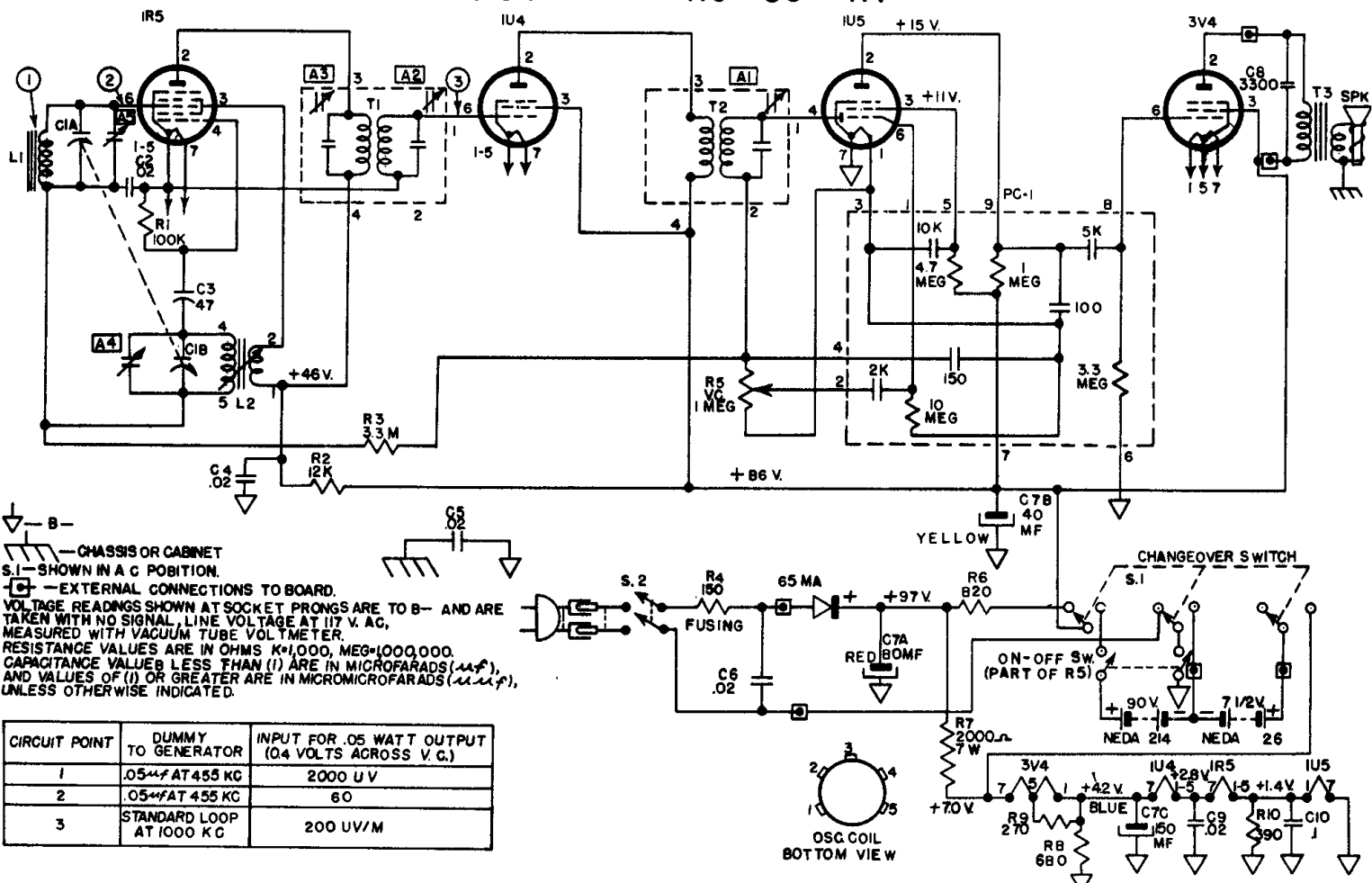
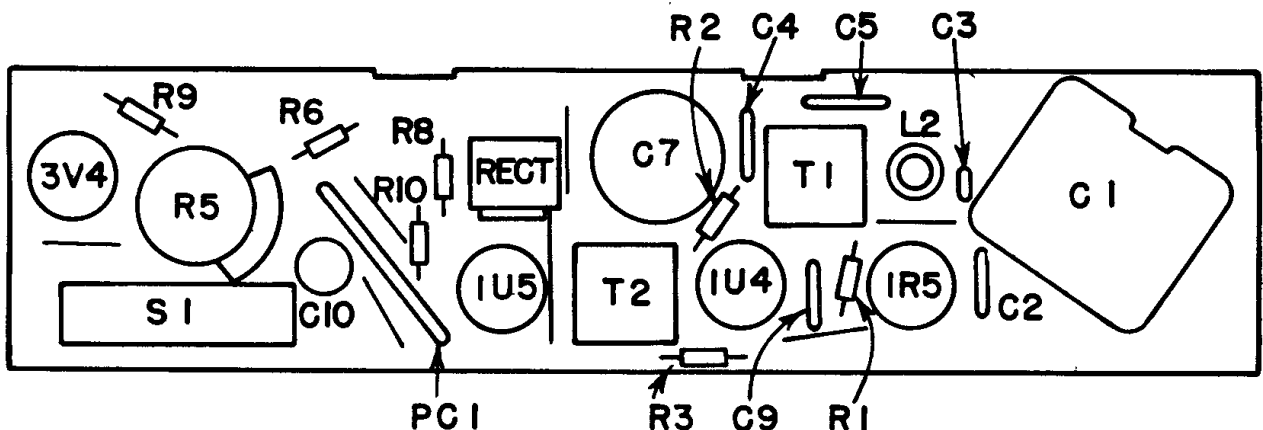


ALIGNMENT PROCEDURE

Output meter reading to indicate .05 watt across voice coil 0.4V
 Generator ground lead connected floating ground
 Generator modulation 30% 400 cycles
 Position of Volume Control fully on

Position of Variable	Generator Frequency	Dummy Antenna	Generator Connections	Adjust Trimmers (In order shown)	Function of Trimmer
Open	455 Kc	.05 μ f	Mixer Grid	A1, A2, A3,	I. F.
Open	1670 Kc		Test Loop	A4	Oscillator
1400 Kc	1400 Kc		Test Loop	A5	Antenna
600 Kc	600 Kc		Test Loop	Check Point	



CHASSIS OR CABINET
 S.1 - SHOWN IN A C POSITION.
 - - - EXTERNAL CONNECTIONS TO BOARD.
 VOLTAGE READINGS SHOWN AT SOCKET PRONGS ARE TO B- AND ARE
 TAKEN WITH NO SIGNAL, LINE VOLTAGE AT 117 V. AC,
 MEASURED WITH VACUUM TUBE VOLTMETER.
 RESISTANCE VALUES ARE IN OHMS K=1,000, MEG=100,000.
 CAPACITANCE VALUES LESS THAN (1) ARE IN MICROFARADS (μ f),
 AND VALUES OF (1) OR GREATER ARE IN MICROMICROFARADS (μ mf),
 UNLESS OTHERWISE INDICATED.

CIRCUIT POINT	DUMMY TO GENERATOR	INPUT FOR .05 WATT OUTPUT (0.4 VOLTS ACROSS V.C.)
1	.05 μ f AT 455 KC	2000 μ V
2	.05 μ f AT 455 KC	60
3	STANDARD LOOP AT 1000 KC	200 μ V/M

OSC. COIL
 BOTTOM VIEW