

Arvin INDUSTRIES INC.

MODEL 758 T

Chassis RE-350

ALIGNMENT PROCEDURE

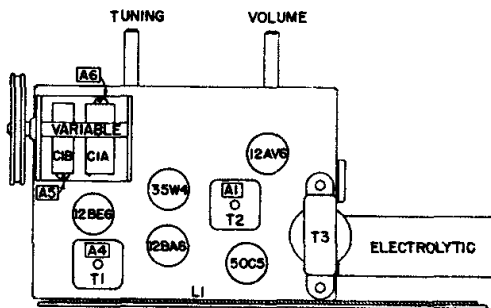
PRELIMINARY:

Output meter connection Across speaker voice coil
 Output meter reading to indicate 500 milliwatts (Standard output) 1.26 volts
 Connection of generator ground lead Floating ground
 Generator modulation 30% 400 cycles
 Position of volume control Fully clockwise

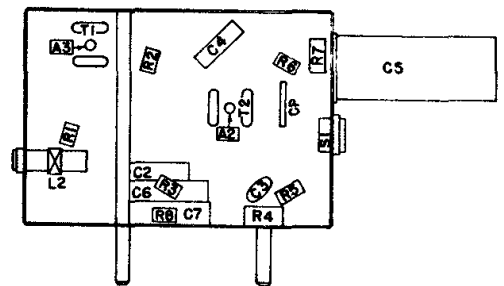
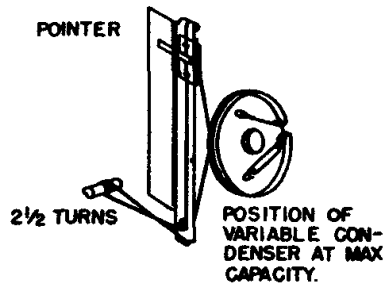
Position of Variable	Frequency of Generator	Dummy Antenna	Generator Output Connection	Trimmers Adjusted in Order Shown for Maximum Output	Function of Trimmer
Open	455	.05 mfd.	Pin 7 12BE6	A1, A2, A3, A4	I. F.
Open	1650		* Test Loop	A5	Oscillator
1400	1400		* Test Loop	A6 on	Antenna
600	600		* Test Loop	Check Point	

*Standard Hazeltine Test Loop Model 1150 or 3 turns of wire about 6" in diameter placed about one foot from the set loop.

The alignment procedure should be repeated in the original order for greatest accuracy.



TUBE LAYOUT



LOCATION OF PARTS UNDER CHASSIS

