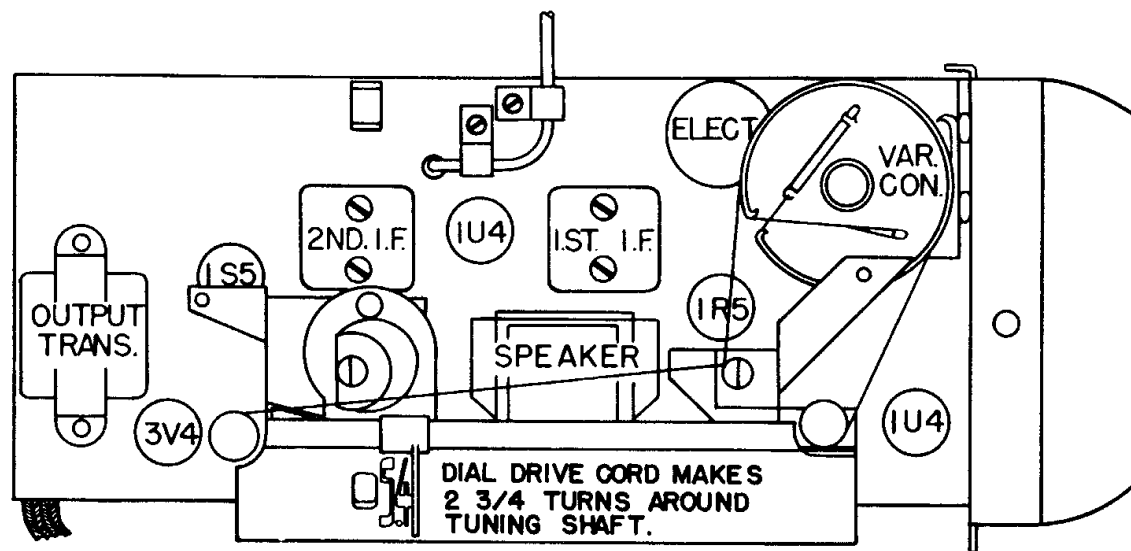
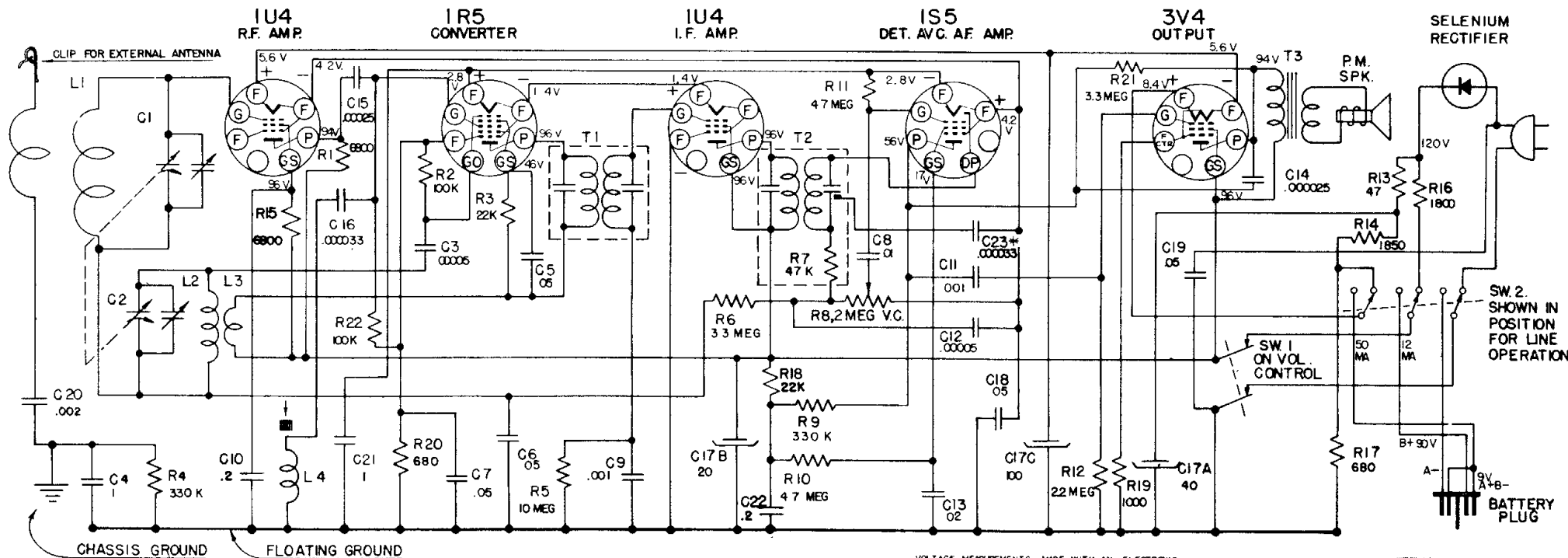


ARVIN RADIO - MODEL 250P CHASSIS RE-248
5 TUBE AC - DC, BATTERY, PORTABLE



TUBE LAYOUT

On battery operation, the B+ voltage measured to floating ground should be the sum of the A & B battery voltages or approximately 99 Volts with new batteries.

FREQUENCY RANGE

Broadcast ----- 540-1600 kc
IF ----- 455 kc

