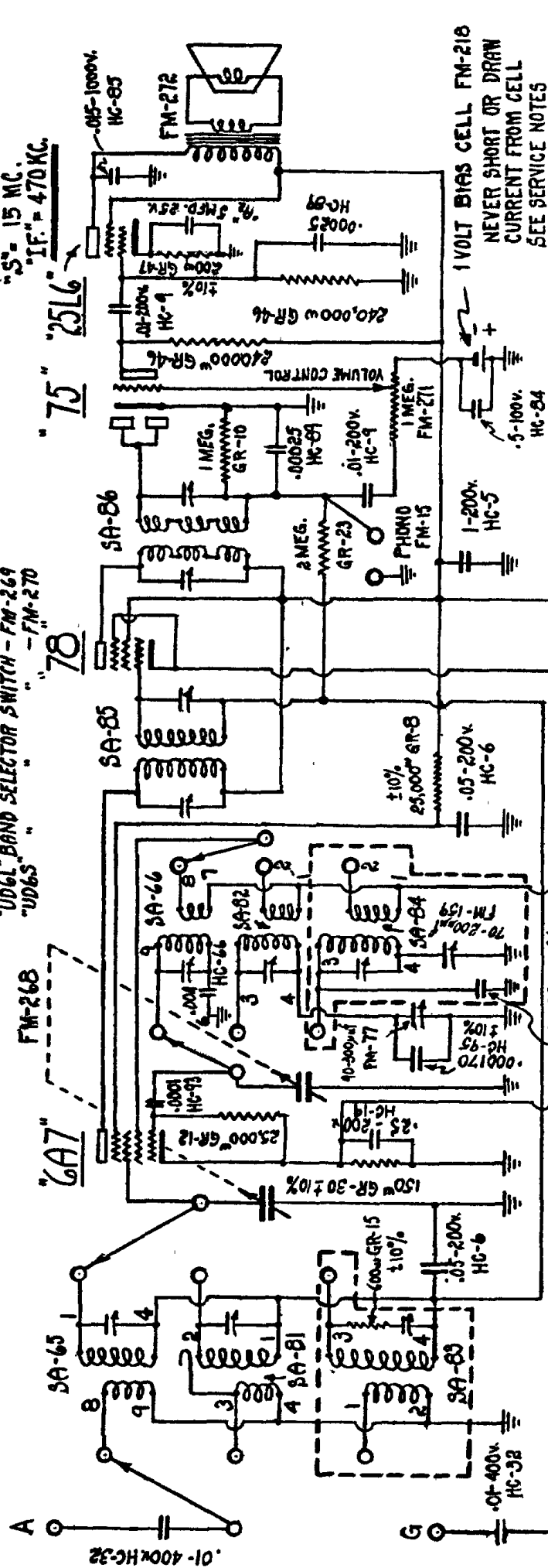


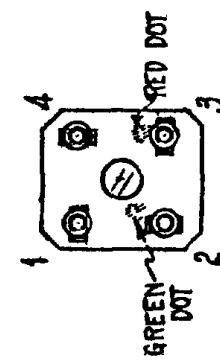
BAND SELECTOR SWITCH SHOWN IN SHORT WAVE POSITION

"UD6L" BAND SELECTOR SWITCH - FM-269  
"UD6S" " " " - FM-270

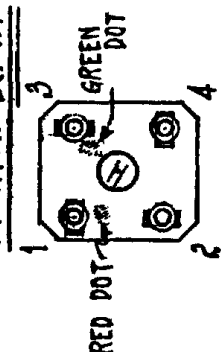


FTM-209 = LOW MIN. TRIMMER ACROSS EACH COIL → CAP 15-18 pf.

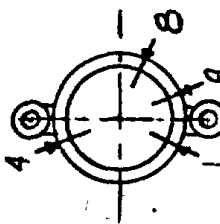
NOTE: A-1/2 IN SAME CAN - SA-83 & SA-84 ARE OMITTED ON "UD65"



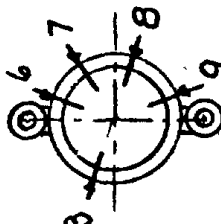
18-05 INT M



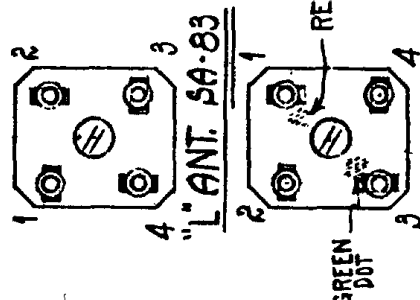
"M" OSC. 5A-82



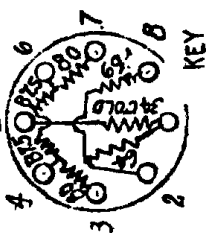
"S" ENT SA-65



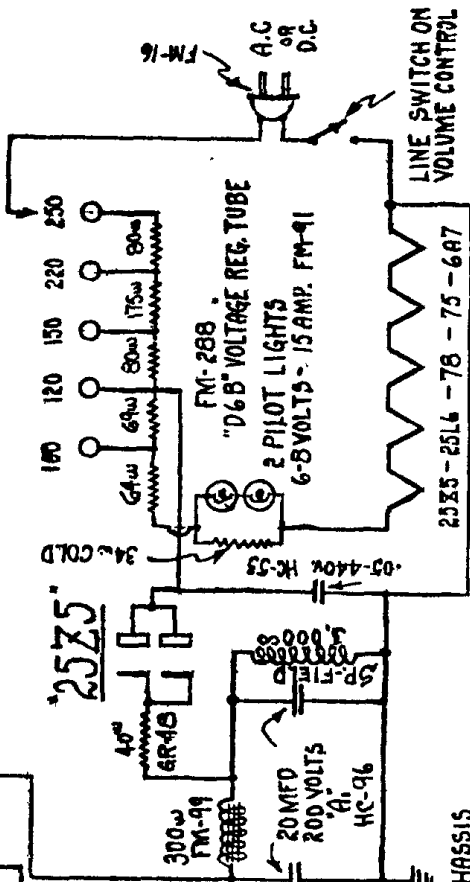
"S" OSC. SA-66



1. OSC. SA-84



**BOTTOM VIEW  
OF PRONGS**



FOR TRIMMERS LOCATION:-  
SEE "D6" RECEIVER SAFETY

WIRING DIAGRAM - "UD61" "UD68"

3-5-37	RLW	0000
--------	-----	------

**J.R.**