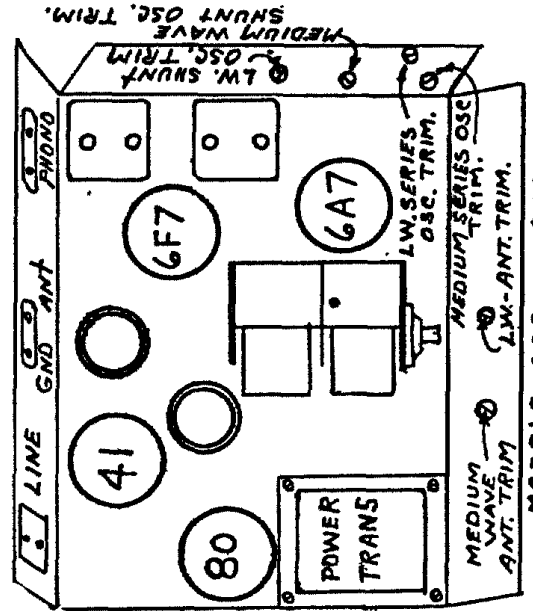


10	HC-10	.00025 MFD. ±20% TYPE #465
11	HC-2B	.001 MFD. ±20% TYPE #146A
12	HC-55	.0005 MFD. ±20% TYPE #465
13	HC-50	.00003 MFD. ±20% TYPE #1465
14	HC-57	.000015 MFD. ±20% TYPE #468

ALIGNMENT FREQUENCIES

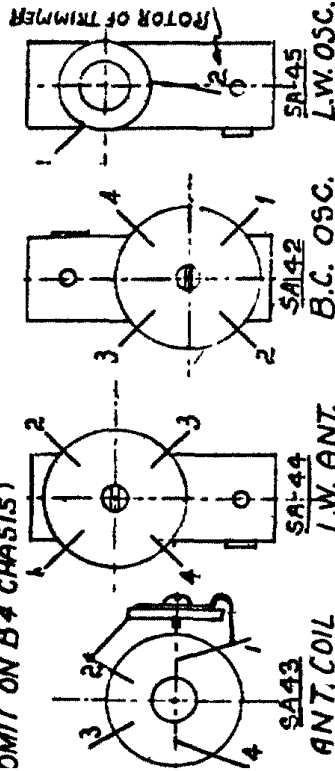
1400 and 600 KC MED. WAVE  
333 and 150 KC LONG WAVE

WIRING DIAGRAM
J.R.
7/26/35
MODEL 400 - CHASSIS B4
MODEL 401 - CHASSIS B4L



MODELS 400 AND 401

- FM-118 + VOLUME CONTROL WITHOUT SWITCH - MODEL 400
- FM-133 + VOLUME CONTROL WITH SWITCH - MODEL 401



R1	PART NO.	VALUE
1	FM-118 or 133	25,000Ω VOLUME CONTROL
2	GR-17	5,000Ω 1/4 WATT ±20%
3	GR-10	1 MEG.Ω 1/4 WATT ±20%
4	GR-12	25,000Ω 1/4 WATT ±20%
5	GR-34	30,000Ω 1/2 WATT ±20%
6	GR-31	400Ω 1/4 WATT ±10%
7	GR-33	4,000Ω 1/4 WATT ±10%
8	GR-23	2 MEG.Ω 1/4 WATT ±20%
9	GR-9	250,000Ω 1/4 WATT ±20%
1	HC-6	.05 MFD. - 200V.
2	HC-53	.05 MFD. - 440V.
3	HC-3	.1 MFD. - 200V.
4	HC-9	.01 MFD. - 200V.
5	HC-19	.25 MFD. - 200V.
6	HC-54	.008 MFD. - 1,000V
7	HC-3	.25 MFD. - 440V.
8	HC-56	2 MFD. - 475V. PEAK
9	HC-52	8 MFD. - 475V. PEAK