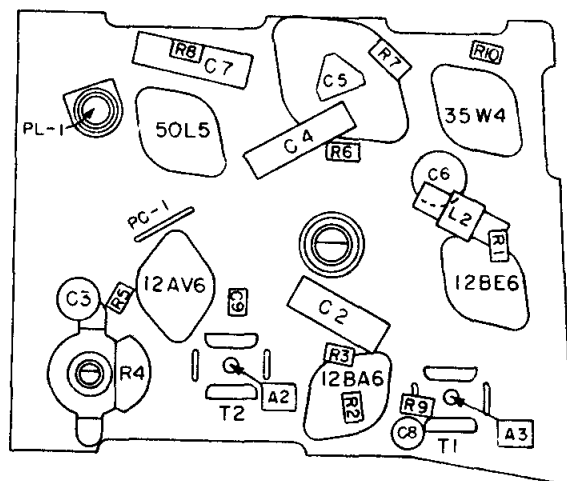
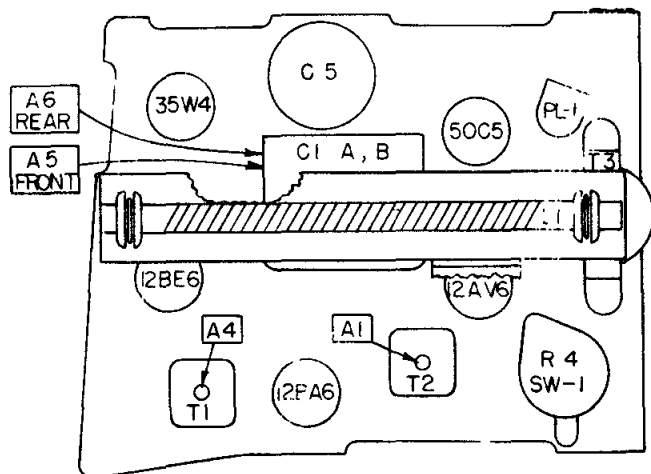


**ALIGNMENT PROCEDURE**

Output meter connection..... Across speaker voice coil  
 Output meter reading to indicate 500 milliwatts (standard output)... 1.26 volts  
 Connection of generator ground lead..... Floating ground  
 Generator modulation..... 30% 400 cycles  
 Position of volume control..... Fully clockwise

Position of Variable	Frequency of Generator	Dummy Antenna	Generator Output Connection	Trimmers Adjusted in Order Shown for Maximum Output	Functions of Trimmer
Open	455	.05 $\mu$ f	Pin 7 12BE6	A1, A2, A3, A4	I. F.
Open	1650		* Test Loop	A5	Oscillator
1400	1400		* Test Loop	A6	Antenna
600	600		* Test Loop	Check Point	

\* Standard Hazeltine Test Loop Model 1150 or 3 turns of wire about 6" in diameter placed about one foot from the set loop.



LOCATION OF PARTS UNDER CHASSIS

APPROXIMATE INPUT FOR 500 MILLIWATTS OUTPUT (1.26 VOLTS ACROSS VOICE COIL) 30% MODULATION @ 400 CPS

