

Arvin INDUSTRIES INC.

Model 741T, Chassis RE-352

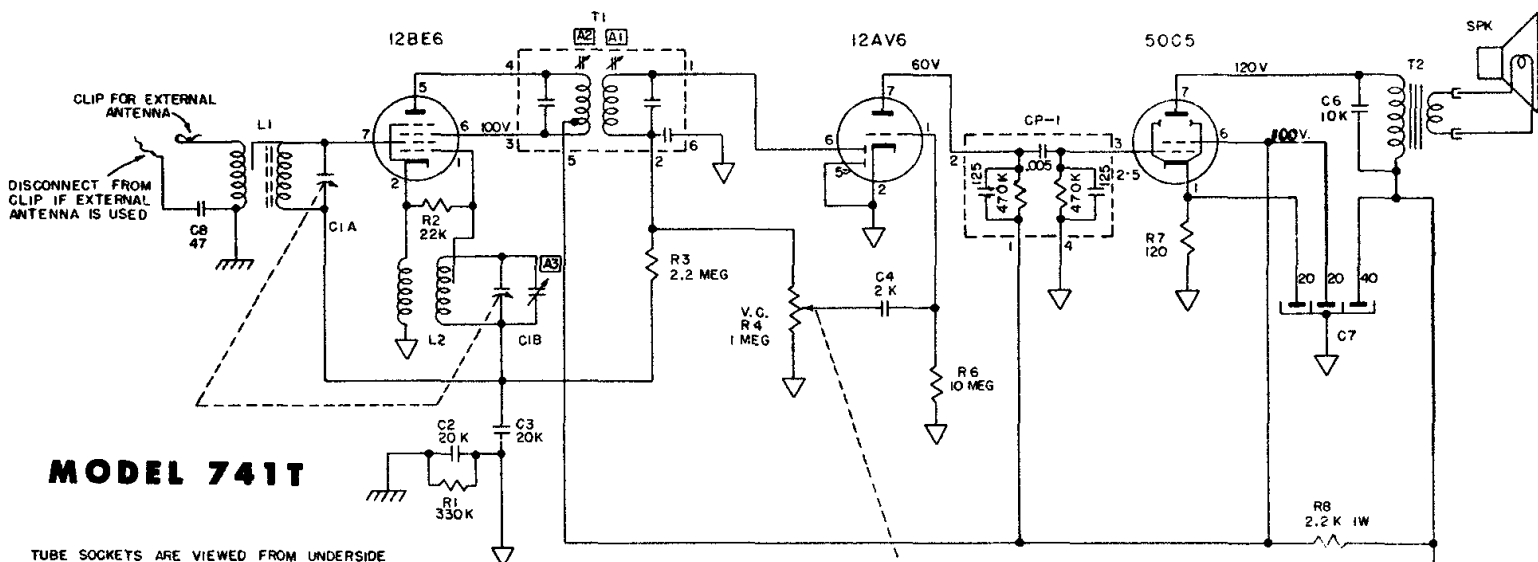
ALIGNMENT PROCEDURE

PRELIMINARY

Output meter connection Speaker voice coil
 Output meter reading to indicate .5 watt output 1.26 Volts
 Connection of generator ground lead Floating ground
 Generator Modulation 30% 400 cycles
 Position of volume control Fully clockwise

Position of Variable	Frequency of Generator	Dummy Antenna	Generator Output Connection	Trimmer Adjustment for Maximum Output	Function of Trimmer
Open	455 Kc	.05 uf	Pin 7 12BE6	A1, A2	I. F.
1400 Kc	1400 Kc	50 uuf	Antenna Clip (Blue wire disconnected)	A3 Rock Variable while making this adj. to track antenna	Oscillator
600 Kc	600 Kc	50 uuf	Antenna Clip (Blue wire disconnected)	Antenna sections plates	Check point

Keep signal generator at a low value to prevent detuning by AVC action.



MODEL 741T

TUBE SOCKETS ARE VIEWED FROM UNDERSIDE OF CHASSIS. VOLTAGE READINGS SHOWN AT SOCKET PRONGS ARE TO B- AND ARE TAKEN WITH NO SIGNAL, AC LINE VOLTAGE AT 117V AC. MEASURED WITH VACUUM TUBE VOLTMETER.

