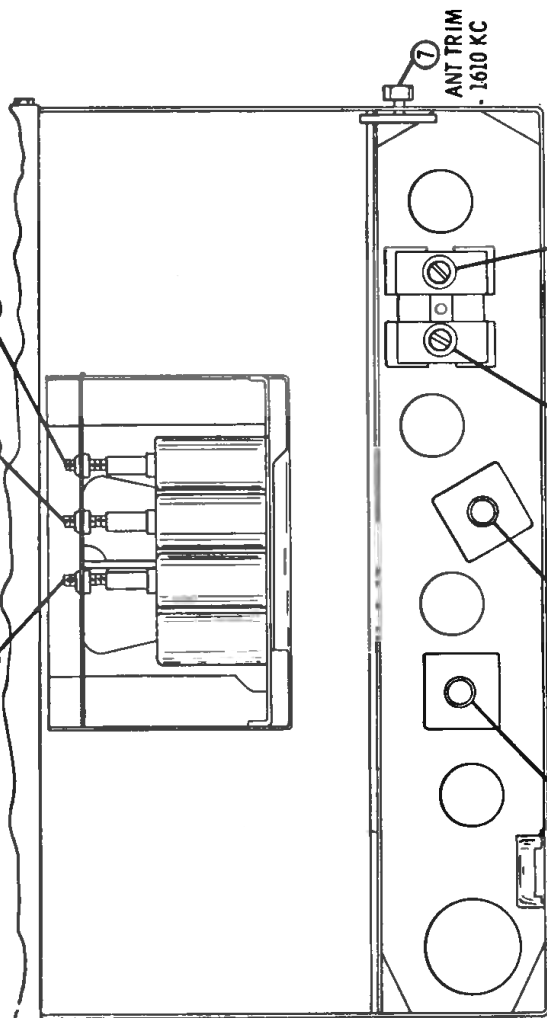


MOTOROLA Model 14MR American Motors 8990833

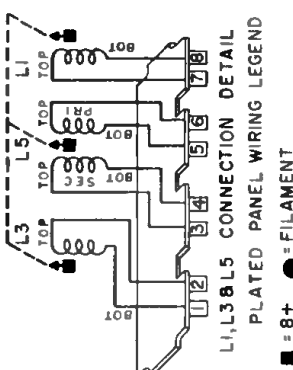
RF CORE 1020 KC (9) OSC CORE 1020 KC (8) ANT CORE 1020 KC (10)



ALIGNMENT POINTS LOCATION DETAIL
1 BOT 262.5 KC
2 TOP 2ND IF
3 TOP 1ST IF
4 BOT 262.5 KC
5 OSC TRIM 1610 KC
6 RF TRIM 1610 KC
7 ANT TRIM 1610 KC

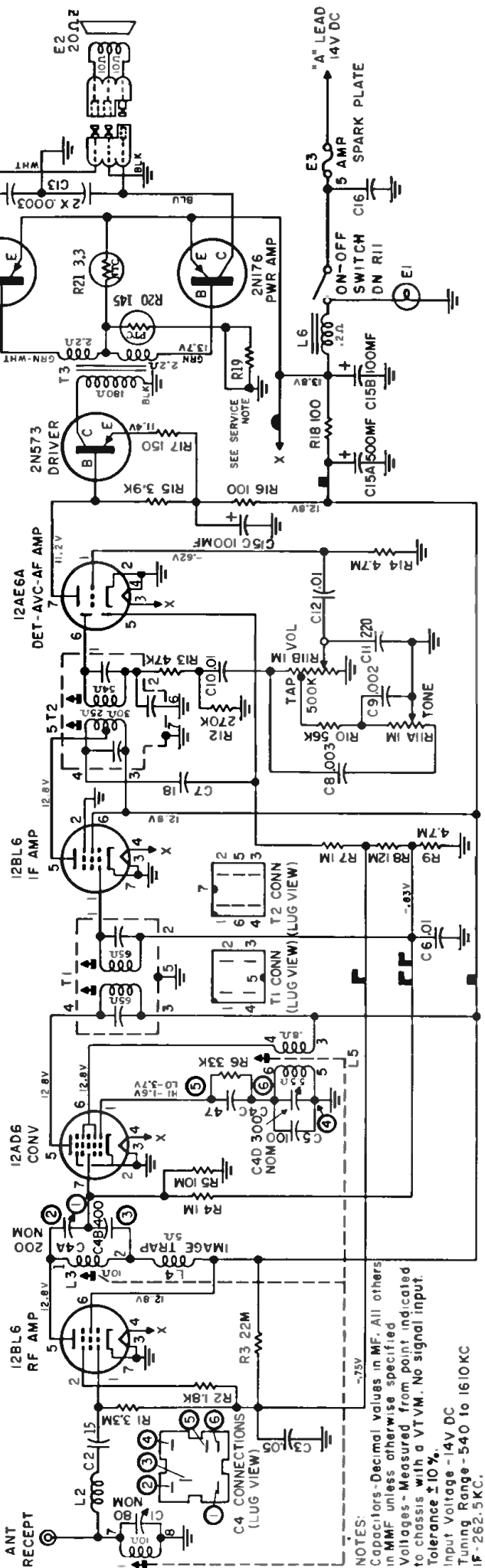
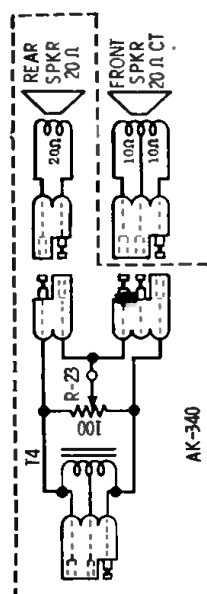
R19 is used to limit total collector current. In most sets it is a piece of copper wire; in a few sets it is a 1/2 watt carbon resistor, either 27 or 56 ohms.

PLATED CHASSIS BOARD GROUND CONNECTIONS AS SEEN THRU BOARD FROM WIRING SIDE

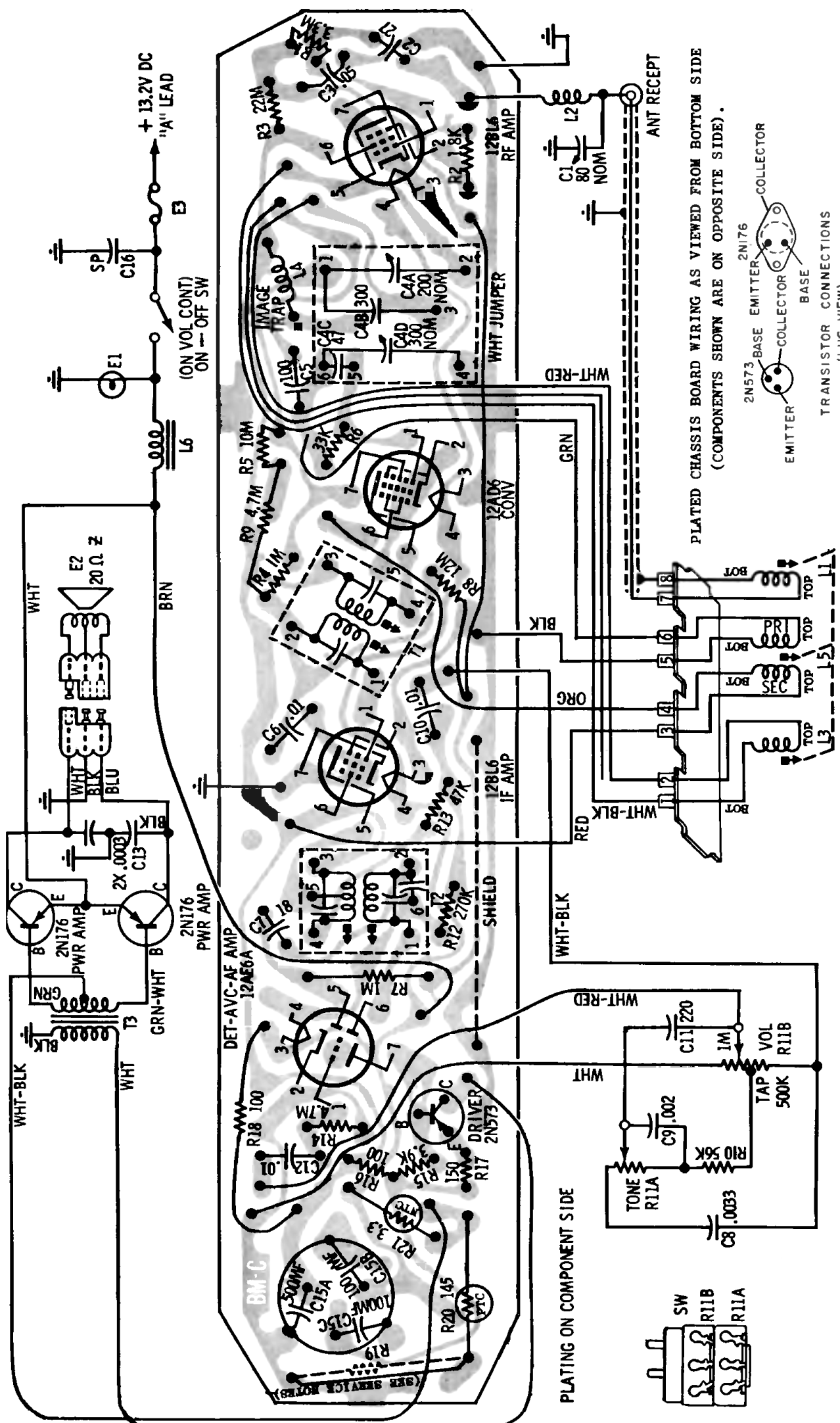


■ = 8+
■ = RF AVC
■ = IF CONV AVC

CAUTION
"A" LEAD MUST BE CONNECTED TO POSITIVE (+) SIDE OF POWER SUPPLY. RADIO WILL NOT OPERATE AND DAMAGE TO COMPONENTS WILL RESULT IF CONNECTED OTHERWISE



NOTES:
Capacitors - Decimal values in MF. All others in MMF unless otherwise specified.
Voltages - Measured from point indicated to chassis with a VTVM. No signal input.
Tolerance $\pm 10\%$.
Input Voltage - 14V DC
Tuning Range - 540 to 1610 KC.
IF - 262.5 KC.



TO SET PUSHBUTTONS

1. Turn receiver on and allow it to operate for fifteen minutes.
2. Unlock pushbuttons by pulling them out to unlock position.
3. Accurately tune in a desired station.
4. Lock one of the pushbuttons to this station by pushing it in firmly.
5. Repeat steps 3 & 4 until all five pushbuttons are set.

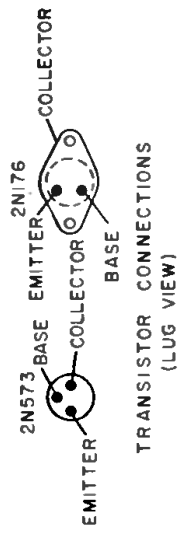
POWER TRANSISTOR CURRENT ADJUSTMENT - After replacing a power transistor, measure the collector current of BOTH power transistors and adjust for proper operation.

With 14V input to the radio "A" lead, the total collector current should not exceed 340 ma or be less than 150 ma. When 12.6V is applied to the radio "A" lead, the total collector current must not exceed 260 ma or be less than 120 ma. If the total collector current does not fall within these limits, change the value of R19 as required.

MODEL

MOTOROLA 14MR

AMERICAN MOTORS 8990833



PLATED CHASSIS BOARD WIRING AS VIEWED FROM BOTTOM SIDE
(COMPONENTS SHOWN ARE ON OPPOSITE SIDE).