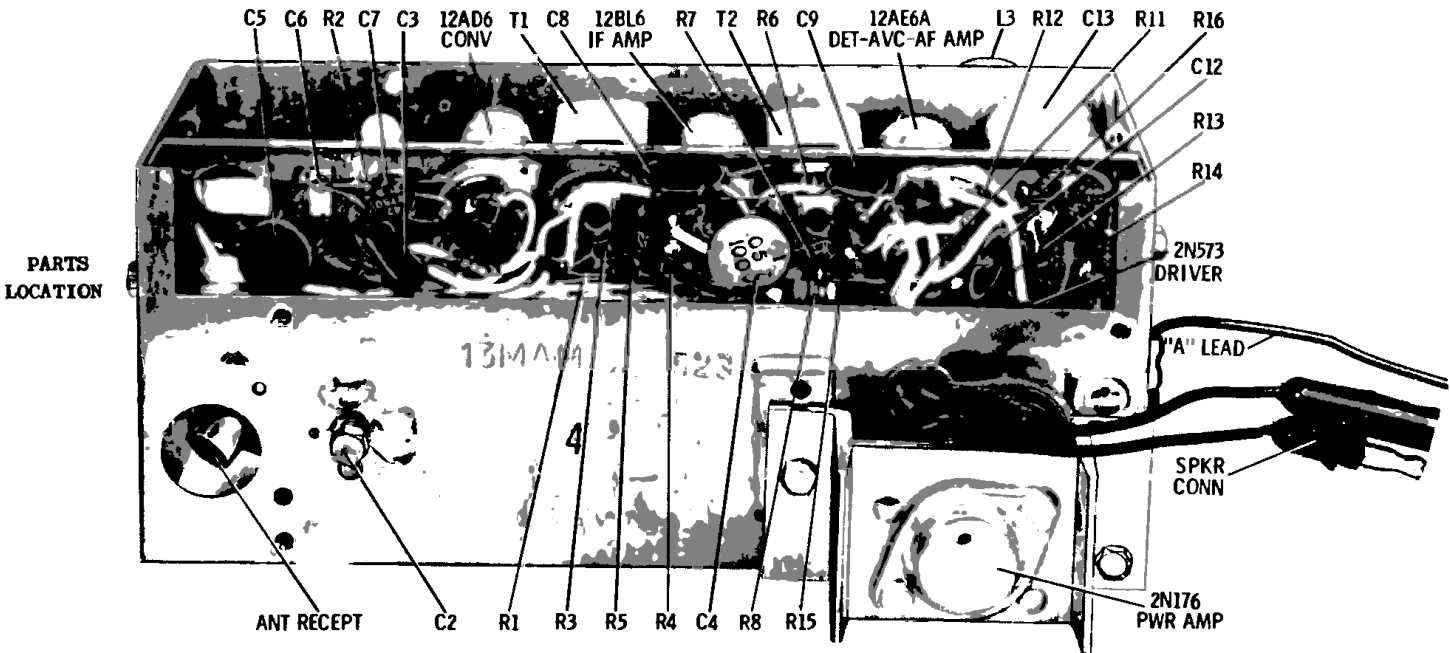
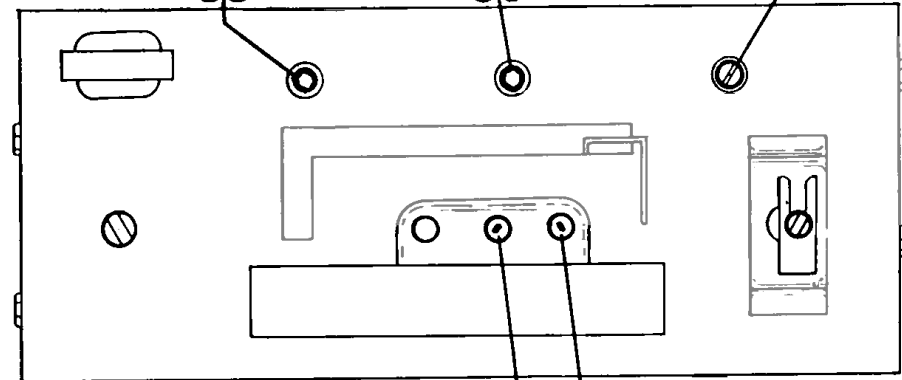
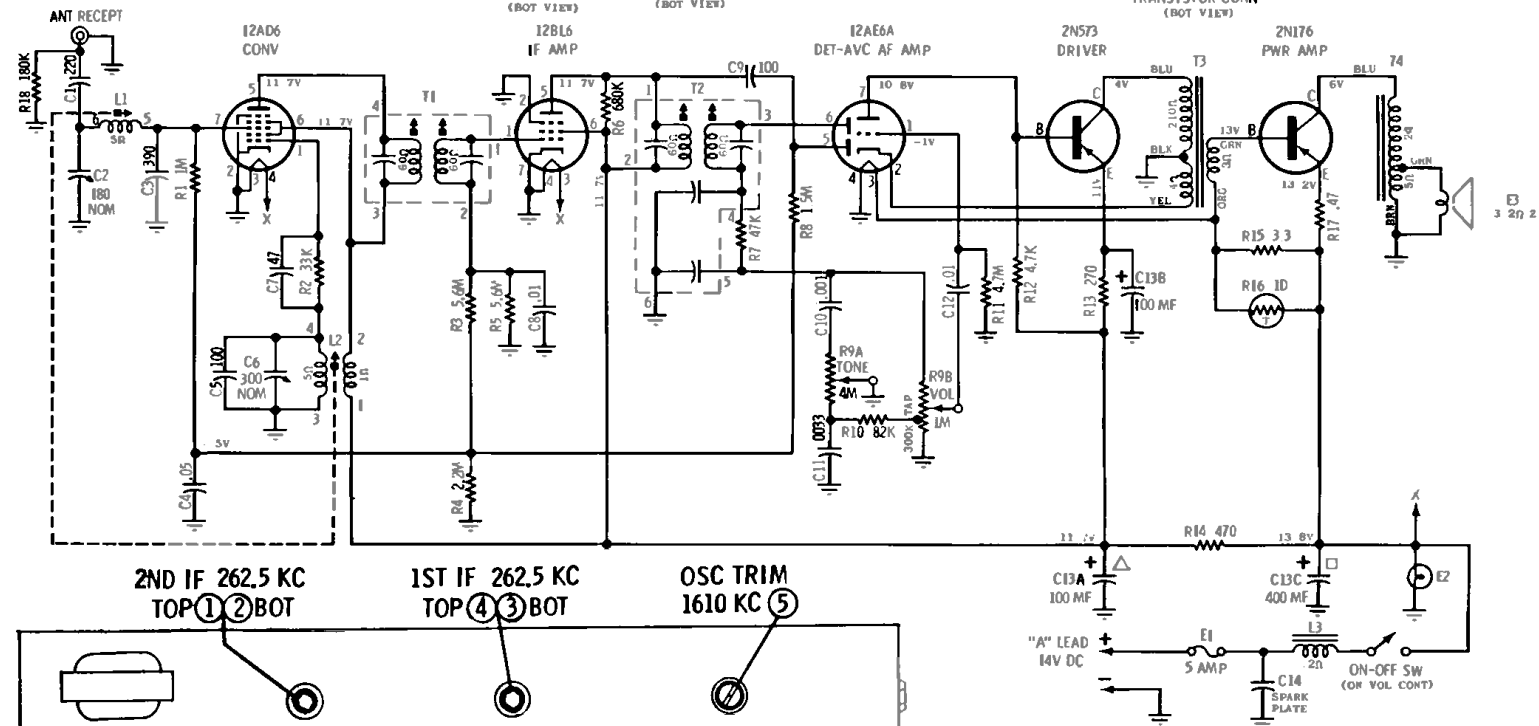


MOTOROLA

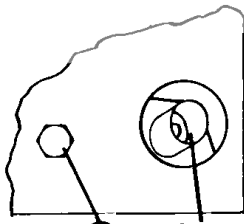
MODEL
MOTOROLA 13MAM
AMERICAN MOTORS 8990831



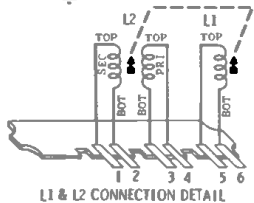
CAUTION
"A" LEAD MUST BE CONNECTED TO POSITIVE (+) SIDE OF POWER SUPPLY. RADIO WILL NOT OPERATE AND DAMAGE TO COMPONENTS WILL RESULT IF CONNECTED OTHERWISE.



FRONT VIEW (WITH DIAL SCALE & BACKGROUND REMOVED)



BACK VIEW



NOTES:
CAPACITORS—Unless otherwise specified, decimal values in MF, all others in MMF.
VOLTAGES—Measured from point indicated to chassis, $\pm 10\%$ No signal input.
INPUT VOLTAGE 14V DC
TUNING RANGE - 540 KC to 1610 KC
IF - 262.5 KC