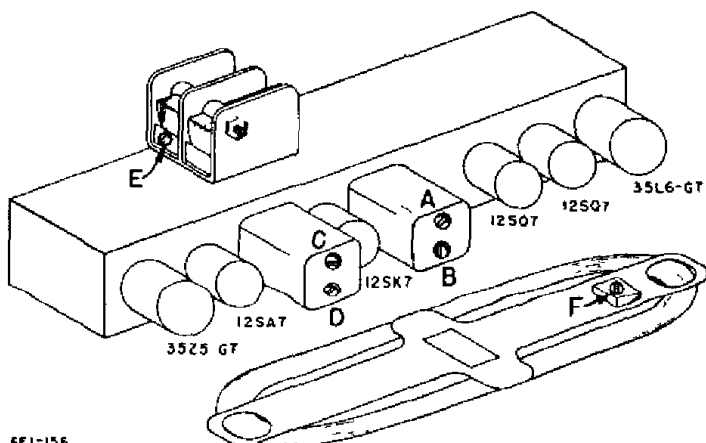


INSIDE BOTTOM VIEW

* If taken with a 1000 ohm-per-volt meter, readings will be either lower or practically zero.

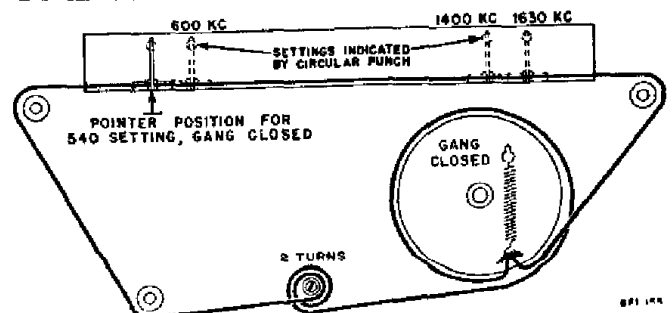
▲ On "Phono" these voltages will be zero. All other DC readings may be slightly higher.

- All readings made between tube socket terminals and B minus (terminal of On-Off switch)
 - Switch in "Radio" position
 - Measured on 117 Volt AC line
 - Volume control minimum, dial turned to low frequency end
 - Voltages measured with Vacuum Tube Voltmeter
- Readings taken with a 1000 ohm-per-volt meter will be approximately the same except for those marked with an asterisk * in the voltage chart, these readings will either be lower or practically zero



6F1-156

Adjustments B and D made from underside of chassis



155

With the gang fully closed the tip of the pointer clip should be in line with the 1/16" circular punch at the extreme left end of the dial background