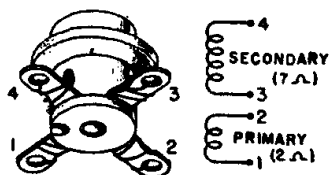
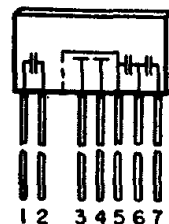


OSCILLATOR COIL



NOTE: C5a, C5h, C5c, C5d and C5e are contained in a single unit (Bulplate). The numbers next to the C5 condenser plates on the schematic correspond to the lead numbers as shown on the drawing of the "BULPLATE" (see inset). If sections of this unit should open or short it will not be necessary to replace the entire Bulplate. Replace the bad section with a condenser of proper value. Note that leads 5 and 6 are common to more than one section.

BULPLATE



NOTE: Some microphonic howling may occur on strong signals if the volume control is turned beyond the overload point. The following changes have been made in late production because some "B" batteries, with high internal resistance, may cause squealing at normal volume levels.

(a) Condenser C3 (.005 mfd. 600 volt, oscillator plate bypass) has been replaced with a .1 mfd. 200 volt condenser.

(b) Condenser C6 (.002 mfd. 600 volt, 3S4 late bypass) has been returned to the screen grid (pin 4) rather than to ground.

(c) The speaker leads have been reversed, the red lead has been

connected to the plate and the blue lead to the screen of the 3S4.

(d) For early production chassis which do not have the above changes, the same results can usually be secured by adding 4 mfd. 200 volt electrolytic condenser from B+ to chassis. Be sure the condenser is connected in the circuit on the set side of the on-off switch. Do not connect it to the battery side of the switch or the inherent leakage of the condenser will appreciably shorten the "B" battery life.

RESISTORS

| Symbol | Part No. |
|--------|---|
| R1 | 47,000 Ohms, 1/4 Watt.....60B 3-473 |
| R2 | 560 Ohms, 1/4 Watt.....60B 2-561 |
| R3 | 10,000 Ohms, 1/4 Watt.....60B 3-103 |
| R4 | 3.3 Megohms, 1/4 Watt.....60B 3-335 |
| R5 | 1 Megohm Volume Control and Switch SW1.....75B 1-22 |
| R6 | 10 Megohms, 1/4 Watt.....60B 3-106 |
| R7 | 4.7 Megohms 1/4 Watt.....60B 3-475 |
| R8 | 1 Megohm, 1/4 Watt.....60B 3-105 |
| R9 | 2.2 Megohms, 1/4 Watt.....60B 3-225 |

COILS, TRANSFORMERS, Etc.

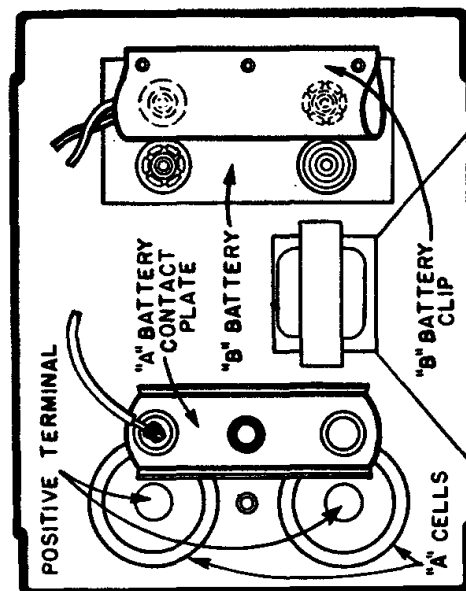
| Symbol | Part No. |
|--------|---|
| L1 | Antenna, Loop.....69B 38 |
| L2a } | |
| L2b } | Coil, Oscillator.....69A 39-1 |
| T1 | Transformer, 1st I.F.....72B 28-1 |
| T2 | Transformer, 2nd I.F.....72B 28-1 |
| T3 | Transformer, Output.....98A 13 |
| | Speaker (3 1/2" PM) & Output Transformer.....78C 33 |
| SW1 | Switch, On-Off.....Part of R5 |

CONDENSERS

| Symbol | Part No. |
|--------|--|
| C1 | .01 mfd., 600 Volts, Paper.....64B 1-10 |
| C2 | .0001 mfd., Ceramic.....65B 6-3 |
| C3 | .1 mfd. 200 Volts, Paper.....64B 1-30 |
| C4 | .25 mfd., 200 Volts, Paper.....64B -128 |
| C5a | 150 mmfd., Ceramic |
| C5b | .002 mfd., Ceramic |
| C5c | .006 mfd., Ceramic |
| C5d | 100 mmfd., Ceramic |
| C5e | .005 mfd., Ceramic |
| C6 | .002 mfd., 600 Volts, Paper.....64B 1-14 |
| C7a | 0 to 354 mmfd., Gang }.....68B 13 |
| C7b | 0 to 107.2 mmfd., Gang } |

Admiral

CHASSIS 4D1
MODELS 4D11, 4D12, 4D13



VOLTAGE DATA

- Readings made between point indicated and chassis.
- Measured using a fresh set of batteries.
- Turned to low frequency end, no signal.
- Voltages measured with Vacuum-Tube Voltmeter.
- A second voltage reading (marked with an asterisk *) indicates readings made with a 1000 ohm-per-volt meter when use of this instrument would result in appreciably lower readings.

