

MODEL 911

INSTRUCTIONS FOR ADJUSTING AUTOMATIC TUNING CONTROL

Refer to the diagram underneath cabinet and see which set of adjustment screws will have a tuning range that includes the frequency of the station desired. This is the pair of screws to be adjusted for this particular station. The ranges are listed under each pair of adjustment screws.

(WJZ's transmitting frequency, 760 kc., will be included in the range listed as 600-1000 kc. This pair of screws are to be adjusted for WJZ.)

From the same diagram, after finding where the proper pair of adjustment screws are located, trace dotted line connecting these screws to one of the push buttons. This is the button which, after the adjustments are completed, will tune in the station.

(For WJZ, the dotted line from the set of adjustment screws tuning from 600-1000 kc. connects to button No. 3.)

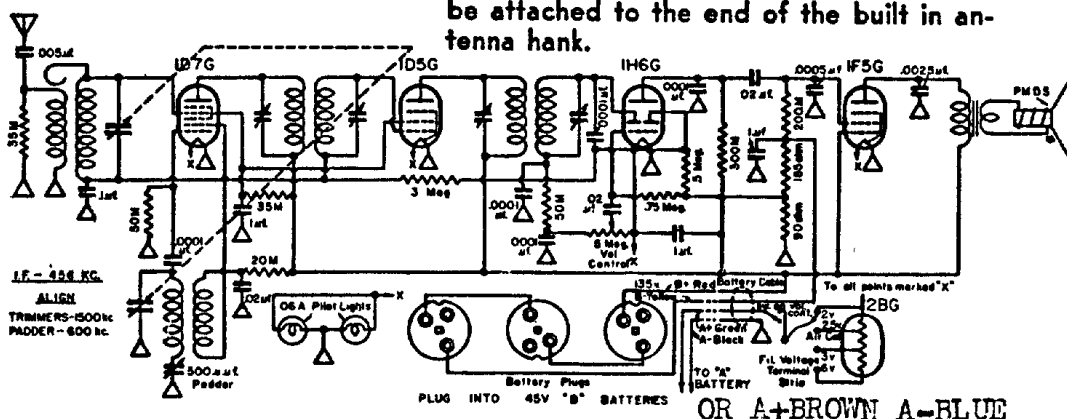
**Push button located by paragraph 4 "IN."
(Push button No. 3 "IN" for WJZ.)**

Turn volume control knob on full (to the extreme right) and adjust screw marked "O" until desired station is heard. (In this case until WJZ is heard.) If when making this adjustment, a number of stations can be brought in as the screw is turned and it is doubtful which station is the correct one, press button No. 6 (Manual Tuning) "IN" and move dial pointer by turning station selector knob, to the number on the dial that corresponds to the frequency of the station. (Turn pointer to 76 on the dial. This corresponds to WJZ's frequency 760 kc. The number on the dial must be multiplied by ten to give the frequency in kilocycles.) Listening to the program being broadcast will identify the station when adjusting screw "O."

Adjust screw marked "A" for maximum volume, retarding the volume control and readjusting if necessary. This completes the adjustments for this particular station.

**MODEL
No. 850**

ANTENNA The antenna built into the set will perform to give best results in most localities. However, in communities located more than 100 miles away from a broadcasting station, an outside antenna of 50 to 75 feet may be necessary for better performance. This antenna should be attached to the end of the built in antenna hank.



OR A+BROWN A-BLUE