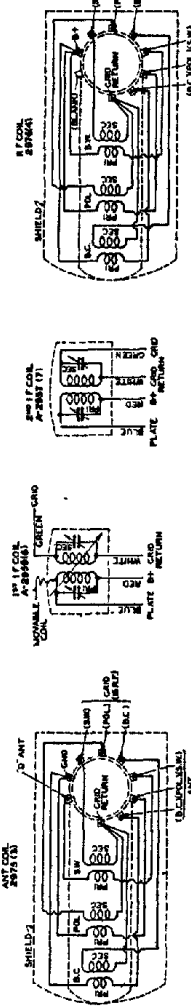
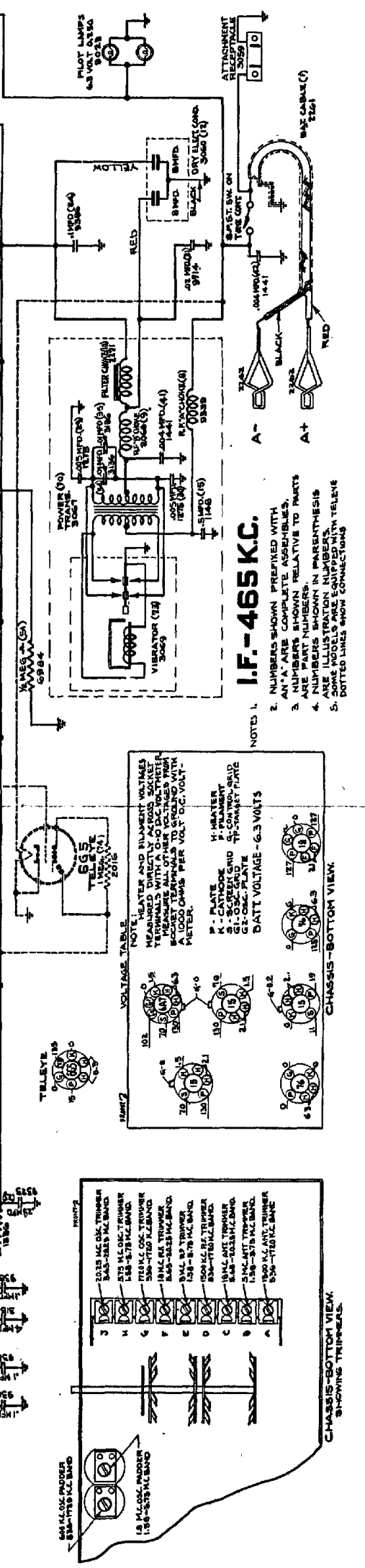
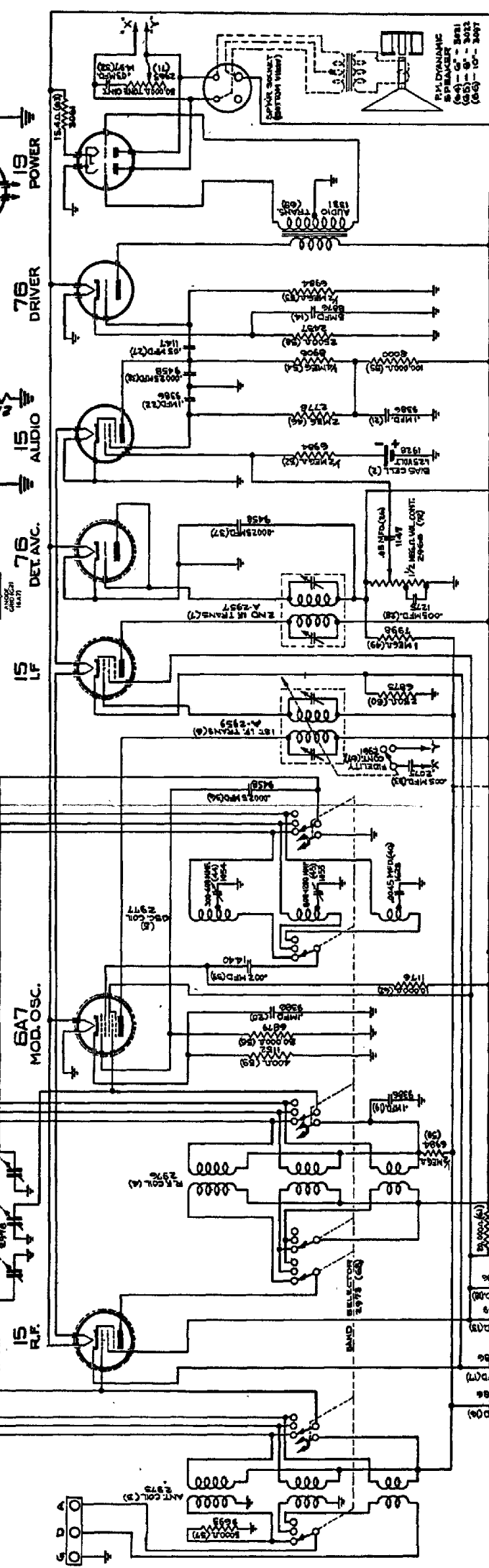
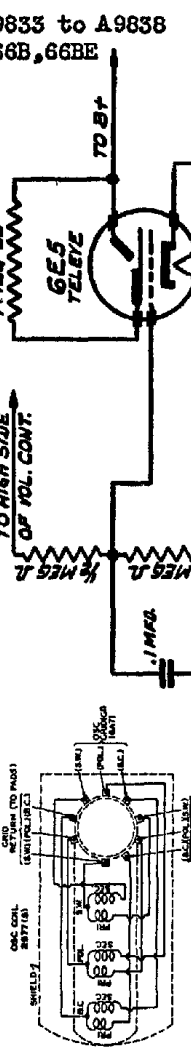


NOTE: Some of these model receivers were equipped with "Teleye" the cathode ray visual tuning indicator. A 6E5 tube was used in early production models, which was replaced by a 6G5 tube in later production. The parts and connections shown in the dotted lines on the complete circuit diagram are used only when a 6G5 "Teleye" tube is incorporated in the receiver. The diagram below shows 6E5 tube connections.

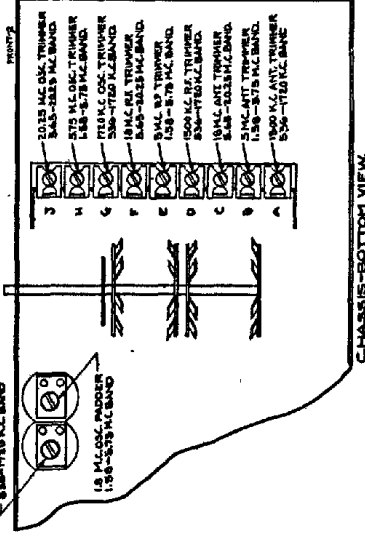


NOTE: 1. 15-400 MC BAND
2. 15-400 MC BAND
3. 15-400 MC BAND
4. 15-400 MC BAND
5. 15-400 MC BAND
6. 15-400 MC BAND
7. 15-400 MC BAND
8. 15-400 MC BAND
9. 15-400 MC BAND
10. 15-400 MC BAND
11. 15-400 MC BAND
12. 15-400 MC BAND
13. 15-400 MC BAND
14. 15-400 MC BAND
15. 15-400 MC BAND
16. 15-400 MC BAND
17. 15-400 MC BAND
18. 15-400 MC BAND
19. 15-400 MC BAND
20. 15-400 MC BAND
21. 15-400 MC BAND
22. 15-400 MC BAND
23. 15-400 MC BAND
24. 15-400 MC BAND
25. 15-400 MC BAND
26. 15-400 MC BAND
27. 15-400 MC BAND
28. 15-400 MC BAND
29. 15-400 MC BAND
30. 15-400 MC BAND
31. 15-400 MC BAND
32. 15-400 MC BAND
33. 15-400 MC BAND
34. 15-400 MC BAND
35. 15-400 MC BAND
36. 15-400 MC BAND
37. 15-400 MC BAND
38. 15-400 MC BAND
39. 15-400 MC BAND
40. 15-400 MC BAND
41. 15-400 MC BAND
42. 15-400 MC BAND
43. 15-400 MC BAND
44. 15-400 MC BAND
45. 15-400 MC BAND
46. 15-400 MC BAND
47. 15-400 MC BAND
48. 15-400 MC BAND
49. 15-400 MC BAND
50. 15-400 MC BAND
51. 15-400 MC BAND
52. 15-400 MC BAND
53. 15-400 MC BAND
54. 15-400 MC BAND
55. 15-400 MC BAND
56. 15-400 MC BAND
57. 15-400 MC BAND
58. 15-400 MC BAND
59. 15-400 MC BAND
60. 15-400 MC BAND
61. 15-400 MC BAND
62. 15-400 MC BAND
63. 15-400 MC BAND
64. 15-400 MC BAND
65. 15-400 MC BAND
66. 15-400 MC BAND
67. 15-400 MC BAND
68. 15-400 MC BAND
69. 15-400 MC BAND
70. 15-400 MC BAND
71. 15-400 MC BAND
72. 15-400 MC BAND
73. 15-400 MC BAND
74. 15-400 MC BAND
75. 15-400 MC BAND
76. 15-400 MC BAND
77. 15-400 MC BAND
78. 15-400 MC BAND
79. 15-400 MC BAND
80. 15-400 MC BAND
81. 15-400 MC BAND
82. 15-400 MC BAND
83. 15-400 MC BAND
84. 15-400 MC BAND
85. 15-400 MC BAND
86. 15-400 MC BAND
87. 15-400 MC BAND
88. 15-400 MC BAND
89. 15-400 MC BAND
90. 15-400 MC BAND
91. 15-400 MC BAND
92. 15-400 MC BAND
93. 15-400 MC BAND
94. 15-400 MC BAND
95. 15-400 MC BAND
96. 15-400 MC BAND
97. 15-400 MC BAND
98. 15-400 MC BAND
99. 15-400 MC BAND
100. 15-400 MC BAND



VOLTAGE TABLE

NOTE: 1. HEATER AND FILAMENT VOLTAGES
2. MEASURED WITH A 0-100 VOLT METER
3. MEASURED WITH A 0-100 VOLT METER
4. MEASURED WITH A 0-100 VOLT METER
5. MEASURED WITH A 0-100 VOLT METER
6. MEASURED WITH A 0-100 VOLT METER
7. MEASURED WITH A 0-100 VOLT METER
8. MEASURED WITH A 0-100 VOLT METER
9. MEASURED WITH A 0-100 VOLT METER
10. MEASURED WITH A 0-100 VOLT METER
11. MEASURED WITH A 0-100 VOLT METER
12. MEASURED WITH A 0-100 VOLT METER
13. MEASURED WITH A 0-100 VOLT METER
14. MEASURED WITH A 0-100 VOLT METER
15. MEASURED WITH A 0-100 VOLT METER
16. MEASURED WITH A 0-100 VOLT METER
17. MEASURED WITH A 0-100 VOLT METER
18. MEASURED WITH A 0-100 VOLT METER
19. MEASURED WITH A 0-100 VOLT METER
20. MEASURED WITH A 0-100 VOLT METER
21. MEASURED WITH A 0-100 VOLT METER
22. MEASURED WITH A 0-100 VOLT METER
23. MEASURED WITH A 0-100 VOLT METER
24. MEASURED WITH A 0-100 VOLT METER
25. MEASURED WITH A 0-100 VOLT METER
26. MEASURED WITH A 0-100 VOLT METER
27. MEASURED WITH A 0-100 VOLT METER
28. MEASURED WITH A 0-100 VOLT METER
29. MEASURED WITH A 0-100 VOLT METER
30. MEASURED WITH A 0-100 VOLT METER
31. MEASURED WITH A 0-100 VOLT METER
32. MEASURED WITH A 0-100 VOLT METER
33. MEASURED WITH A 0-100 VOLT METER
34. MEASURED WITH A 0-100 VOLT METER
35. MEASURED WITH A 0-100 VOLT METER
36. MEASURED WITH A 0-100 VOLT METER
37. MEASURED WITH A 0-100 VOLT METER
38. MEASURED WITH A 0-100 VOLT METER
39. MEASURED WITH A 0-100 VOLT METER
40. MEASURED WITH A 0-100 VOLT METER
41. MEASURED WITH A 0-100 VOLT METER
42. MEASURED WITH A 0-100 VOLT METER
43. MEASURED WITH A 0-100 VOLT METER
44. MEASURED WITH A 0-100 VOLT METER
45. MEASURED WITH A 0-100 VOLT METER
46. MEASURED WITH A 0-100 VOLT METER
47. MEASURED WITH A 0-100 VOLT METER
48. MEASURED WITH A 0-100 VOLT METER
49. MEASURED WITH A 0-100 VOLT METER
50. MEASURED WITH A 0-100 VOLT METER
51. MEASURED WITH A 0-100 VOLT METER
52. MEASURED WITH A 0-100 VOLT METER
53. MEASURED WITH A 0-100 VOLT METER
54. MEASURED WITH A 0-100 VOLT METER
55. MEASURED WITH A 0-100 VOLT METER
56. MEASURED WITH A 0-100 VOLT METER
57. MEASURED WITH A 0-100 VOLT METER
58. MEASURED WITH A 0-100 VOLT METER
59. MEASURED WITH A 0-100 VOLT METER
60. MEASURED WITH A 0-100 VOLT METER
61. MEASURED WITH A 0-100 VOLT METER
62. MEASURED WITH A 0-100 VOLT METER
63. MEASURED WITH A 0-100 VOLT METER
64. MEASURED WITH A 0-100 VOLT METER
65. MEASURED WITH A 0-100 VOLT METER
66. MEASURED WITH A 0-100 VOLT METER
67. MEASURED WITH A 0-100 VOLT METER
68. MEASURED WITH A 0-100 VOLT METER
69. MEASURED WITH A 0-100 VOLT METER
70. MEASURED WITH A 0-100 VOLT METER
71. MEASURED WITH A 0-100 VOLT METER
72. MEASURED WITH A 0-100 VOLT METER
73. MEASURED WITH A 0-100 VOLT METER
74. MEASURED WITH A 0-100 VOLT METER
75. MEASURED WITH A 0-100 VOLT METER
76. MEASURED WITH A 0-100 VOLT METER
77. MEASURED WITH A 0-100 VOLT METER
78. MEASURED WITH A 0-100 VOLT METER
79. MEASURED WITH A 0-100 VOLT METER
80. MEASURED WITH A 0-100 VOLT METER
81. MEASURED WITH A 0-100 VOLT METER
82. MEASURED WITH A 0-100 VOLT METER
83. MEASURED WITH A 0-100 VOLT METER
84. MEASURED WITH A 0-100 VOLT METER
85. MEASURED WITH A 0-100 VOLT METER
86. MEASURED WITH A 0-100 VOLT METER
87. MEASURED WITH A 0-100 VOLT METER
88. MEASURED WITH A 0-100 VOLT METER
89. MEASURED WITH A 0-100 VOLT METER
90. MEASURED WITH A 0-100 VOLT METER
91. MEASURED WITH A 0-100 VOLT METER
92. MEASURED WITH A 0-100 VOLT METER
93. MEASURED WITH A 0-100 VOLT METER
94. MEASURED WITH A 0-100 VOLT METER
95. MEASURED WITH A 0-100 VOLT METER
96. MEASURED WITH A 0-100 VOLT METER
97. MEASURED WITH A 0-100 VOLT METER
98. MEASURED WITH A 0-100 VOLT METER
99. MEASURED WITH A 0-100 VOLT METER
100. MEASURED WITH A 0-100 VOLT METER



I.F. - 465 KC.

- NOTES:
1. NUMBERS SHOWN PREFIXED WITH "A" ARE COMPLETE ASSEMBLIES.
 2. NUMBERS SHOWN IN PARENTHESES ARE PART NUMBERS.
 3. NUMBERS SHOWN IN PARENTHESES ARE PART NUMBERS.
 4. NUMBERS SHOWN IN PARENTHESES ARE PART NUMBERS.
 5. SOME WIRING CONNECTIONS SHOWN WITH TELETYPE.
 6. DOTTED LINES SHOW CONNECTIONS.