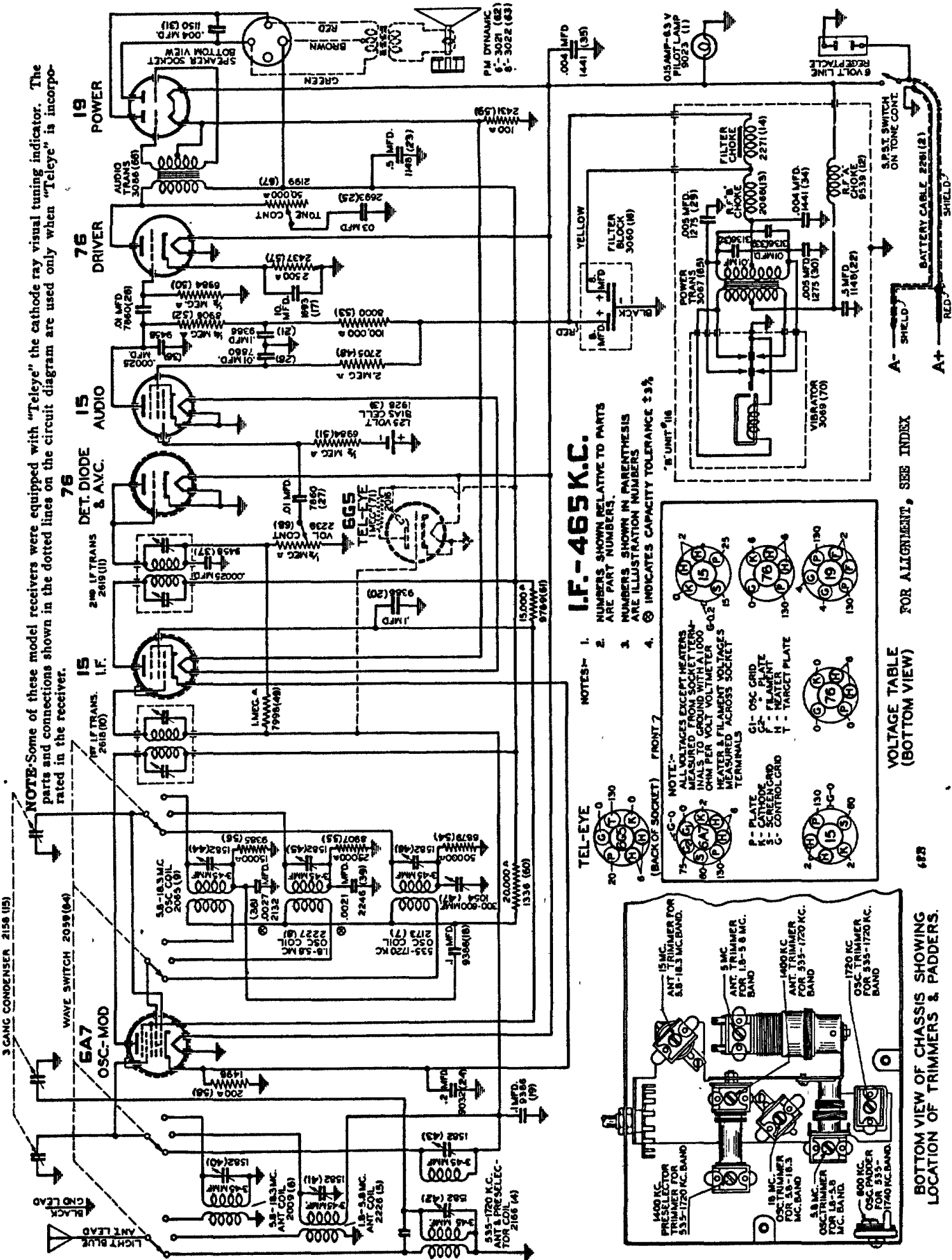


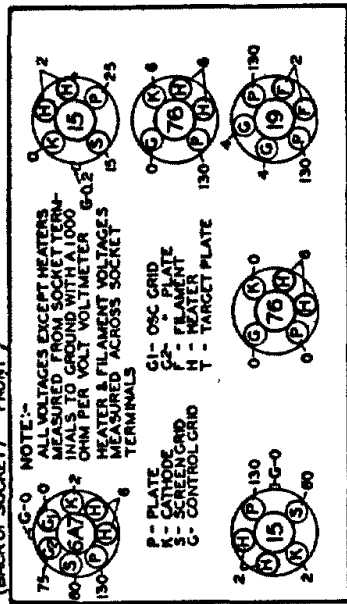
NOTE-Some of these model receivers were equipped with "Teleye" the cathode ray visual tuning indicator. The parts and connections shown in the dotted lines on the circuit diagram are used only when "Teleye" is incorporated in the receiver.



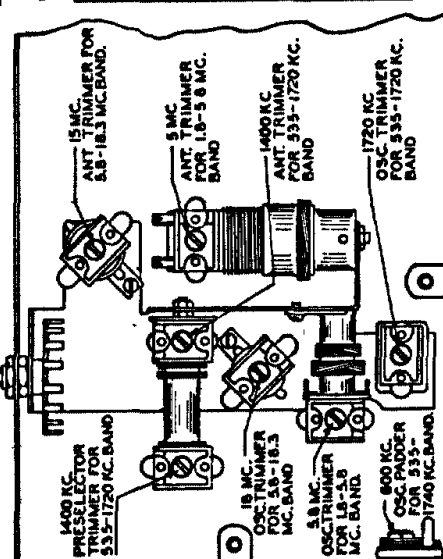
I.F. - 465 K.C.

- NOTES:-
1. NUMBERS SHOWN RELATIVE TO PARTS ARE PART NUMBERS.
 2. NUMBERS SHOWN IN PARENTHESES ARE ILLUSTRATION NUMBERS.
 3. ⊕ INDICATES CAPACITY TOLERANCE ±3%.
 4. * UNIT "116".

TEL-EYE



VOLTAGE TABLE (BOTTOM VIEW)



BOTTOM VIEW OF CHASSIS SHOWING LOCATION OF TRIMMERS & PADDERS.