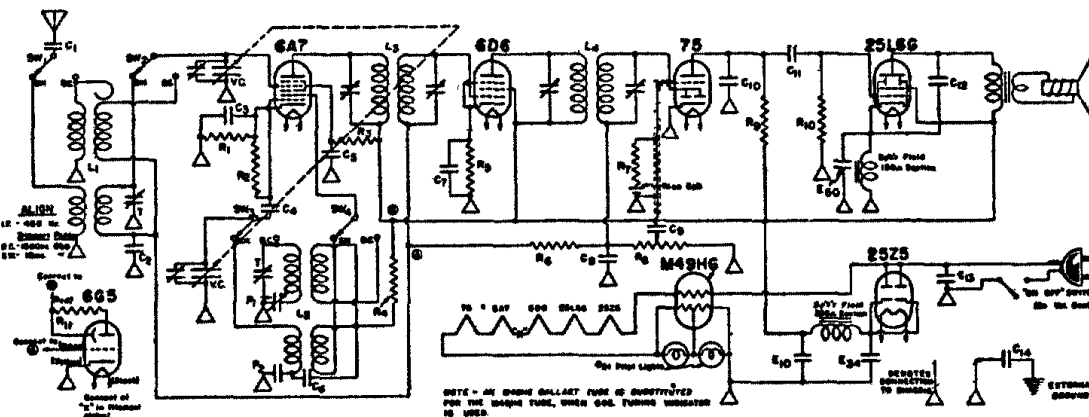


# AIR-KING PRODUCTS CORP. MODELS 822,822X,826X,832 MODELS 823,833 MODELS 824,834



MODELS 822, 822X,  
826X and 832.

CONVENTIONAL  
ALIGNMENT  
SEE  
SPECIAL  
SECTION  
VOL. VIII

FREQUENCY RANGES :

540 to 1740 KC  
5.7 to 18.7 MC

R <sub>1</sub>	250 OHM	1/4 WATT
R <sub>2</sub>	50,000	"
R <sub>3</sub>	35,000	"
R <sub>4</sub>	4,500	"
R <sub>5</sub>	400	"
R <sub>6</sub>	3,000,000	"
R <sub>7</sub>	1,000,000	"
R <sub>8</sub>	500,000	"
R <sub>9</sub>	500,000	"
R <sub>10</sub>	500,000	"
R <sub>11</sub>	1,000,000	"

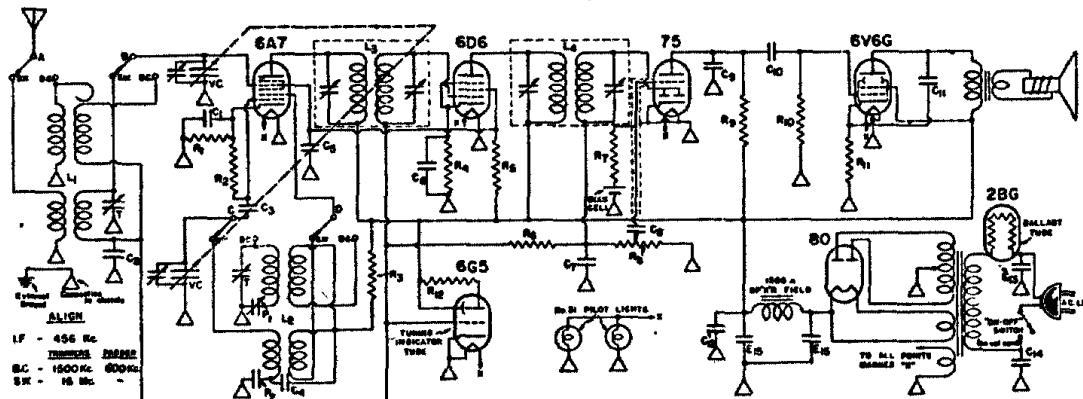
SW-1, E, A, B - 4 POLE DOUBLE THROW  
WAVE BAND SWITCH

L <sub>1</sub>	COMB. ANTENNA COIL
L <sub>2</sub>	COMB. OSCILLATOR COIL
L <sub>3</sub>	455 KC. INPUT IF
L <sub>4</sub>	455 KC. OUTPUT IF
P <sub>1</sub>	500 MFD. 50V. NICA
P <sub>2</sub>	.0034 MFD. NICA
E <sub>10</sub>	10 MFD. 150 VDC
E <sub>34</sub>	34 MFD. " "
E <sub>50</sub>	50 MFD. 15 "

VC - 450 MFD. MAX. VARIABLE  
T - 3-35 MFD. TRIMMER

C <sub>1</sub>	.005	400 V
C <sub>2</sub>	.05	200 V
C <sub>3</sub>	.05	200 V
C <sub>4</sub>	.0001	50V. NICA
C <sub>5</sub>	.02	400 V
C <sub>6</sub>	.02	400 V
C <sub>7</sub>	.05	200 V
C <sub>8</sub>	.02	400 V
C <sub>9</sub>	.00025	50V. NICA
C <sub>10</sub>	.00025	50V. NICA
C <sub>11</sub>	.01	400 V
C <sub>12</sub>	.01	400 V
C <sub>13</sub>	.05	400 V
C <sub>14</sub>	.05	400 V

## MODELS 823,833



MODELS 823, 833

CONVENTIONAL  
ALIGNMENT  
SEE  
SPECIAL  
SECTION  
VOL. VIII

FREQUENCY RANGES :

540 to 1740 KC  
5.7 to 18.7 MC

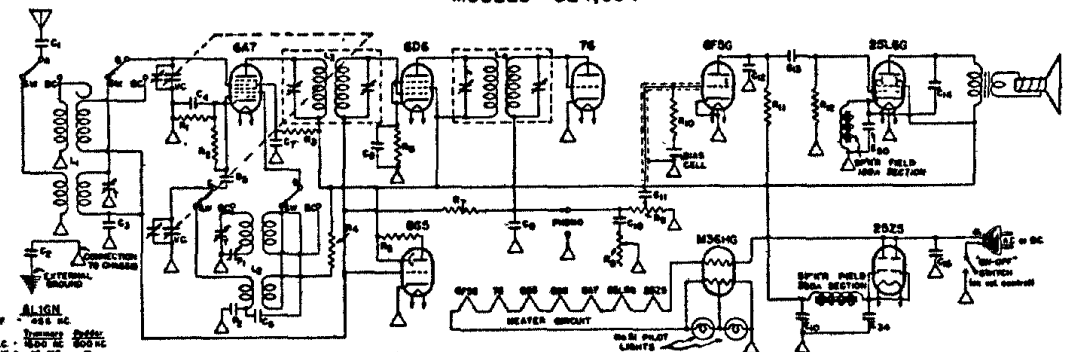
R <sub>1</sub>	250 OHM	1/4 WATT
R <sub>2</sub>	50,000	"
R <sub>3</sub>	35,000	"
R <sub>4</sub>	4,500	"
R <sub>5</sub>	35,000	"
R <sub>6</sub>	3,000,000	"
R <sub>7</sub>	1,000,000	"
R <sub>8</sub>	500,000	"
R <sub>9</sub>	500,000	"
R <sub>10</sub>	500,000	"
R <sub>11</sub>	1,000,000	"

SWITCHES A, B, C - 4 POLE DOUBLE  
THROW WAVE BAND SWITCH

L <sub>1</sub>	COMBINATION ANT. COIL
L <sub>2</sub>	COMBINATION OSC. COIL
L <sub>3</sub>	455 KC. INPUT IF
L <sub>4</sub>	455 KC. OUTPUT IF
VC	450 MFD. MAX. VAR. COND.
T	3-35 MFD. TRIMMERS
P <sub>1</sub>	500 MFD. MAX. PRODER
P <sub>2</sub>	3400 MFD. FIXED PRODER

C <sub>1</sub>	.75	200 V
C <sub>2</sub>	.15	"
C <sub>3</sub>	.0001	50V. NICA
C <sub>4</sub>	.02	400 V
C <sub>5</sub>	.05	200 V
C <sub>6</sub>	.05	"
C <sub>7</sub>	.00025	50V. NICA
C <sub>8</sub>	.05	400 V
C <sub>9</sub>	.00025	50V. NICA
C <sub>10</sub>	.02	400 V
C <sub>11</sub>	.01	"
C <sub>12</sub>	.05	"
C <sub>13</sub>	.02	"
C <sub>14</sub>	.75	"

## MODELS 824,834



MODELS 824, 834

CONVENTIONAL  
ALIGNMENT  
SEE  
SPECIAL  
SECTION  
VOL. VIII

FREQUENCY RANGES :

540 to 1740 KC  
5.7 to 18.7 MC

R <sub>1</sub>	250 OHM	1/4 WATT
R <sub>2</sub>	50,000	"
R <sub>3</sub>	35,000	"
R <sub>4</sub>	4,500	"
R <sub>5</sub>	35,000	"
R <sub>6</sub>	3,000,000	"
R <sub>7</sub>	1,000,000	"
R <sub>8</sub>	500,000	"
R <sub>9</sub>	500,000	"
R <sub>10</sub>	500,000	"
R <sub>11</sub>	1,000,000	"

SWITCH A, B, C - 4 POLE DOUBLE  
THROW WAVE BAND SWITCH

L <sub>1</sub>	COMBINATION 3-BAND ANT. COIL
L <sub>2</sub>	COMBINATION OSCILLATOR COIL
L <sub>3</sub>	455 KC. INPUT IF
L <sub>4</sub>	455 KC. OUTPUT IF
P <sub>1</sub>	500 MFD. MAX. PRODER
P <sub>2</sub>	.0034 MFD. NICA
E <sub>10</sub>	10 MFD. 150 VDC
E <sub>34</sub>	34 MFD. " "
E <sub>50</sub>	50 MFD. 15 "

VC - 450 MFD. MAX. VARIABLE COND.  
T - 3-35 MFD. TRIMMER

C <sub>1</sub>	.005	400 V
C <sub>2</sub>	.05	200 V
C <sub>3</sub>	.05	200 V
C <sub>4</sub>	.0001	50V. NICA
C <sub>5</sub>	.02	400 V
C <sub>6</sub>	.02	400 V
C <sub>7</sub>	.05	200 V
C <sub>8</sub>	.02	400 V
C <sub>9</sub>	.00025	50V. NICA
C <sub>10</sub>	.00025	50V. NICA
C <sub>11</sub>	.01	400 V
C <sub>12</sub>	.01	400 V
C <sub>13</sub>	.05	400 V
C <sub>14</sub>	.05	400 V