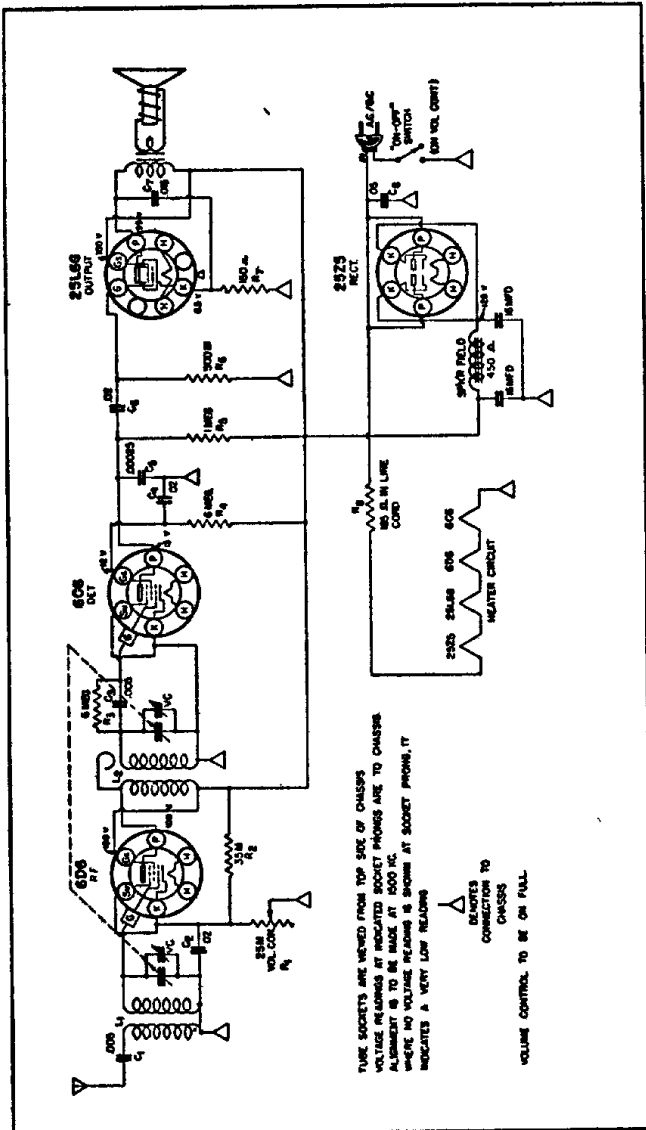
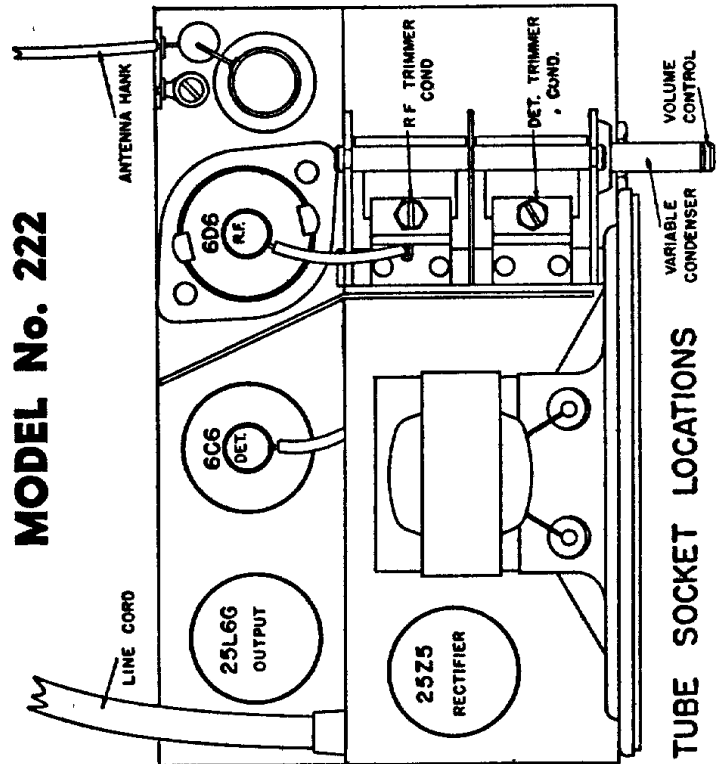


AIR-KING PRODUCTS CORP.

MODEL 222 MODEL 250-B



MODEL No. 222

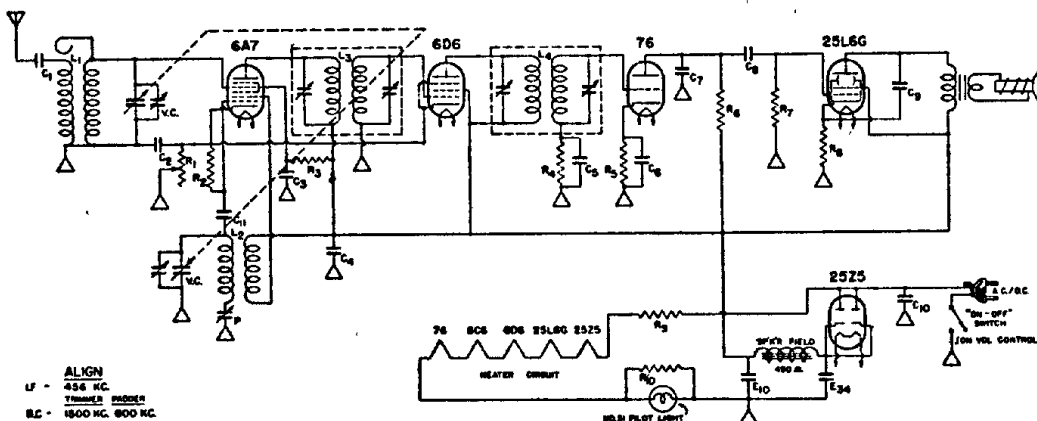


Do not connect ground wire to chassis.

The frequency range covered is 550-1700 kilocycles.

105-125 volts, 50-60 cycles, a.c. or d.c. power

MODEL 250-B



ALIGN
LF - 456 KC.
TRIMMER PIPER
BC - 1800 KC. 800 KC.

R ₁	7,500 OHMS	VOL CONTROL
R ₂	50,000	"
R ₃	33,000	"
R ₄	6,000,000	"
R ₅	200,000	"
R ₆	1,000,000	"
R ₇	500,000	"
R ₈	150	"
R ₉	143	IN LINE COND
R ₁₀	31	3 WATT

L ₁	ANTENNA COIL
L ₂	OSCILLATOR COIL
L ₃	456 KC. INPUT LF
L ₄	456 KC. OUTPUT LF
P	700 MMF MAX. PACDER
E ₁₀	10 MFD 150 V.W.
E ₃₄	34 - " - "
V.C.	410 MMF MAX. VARIABLE COND

C ₁	.005 - 600 V
C ₂	1 - 200 V
C ₃	.05 - "
C ₄	.05 - "
C ₅	.005 - 600 V
C ₆	1 - 200 V
C ₇	.0005 - MICA
C ₈	.05 - 200 V
C ₉	.01 - 400 V
C ₁₀	.05 - "
C ₁₁	.0001 - MICA

105-125 volts, 50-60 cycles AC or DC

The frequency range covered is 540-1750 kilocycles.

CAUTION - Do Not Connect Ground Wire to Chassis.