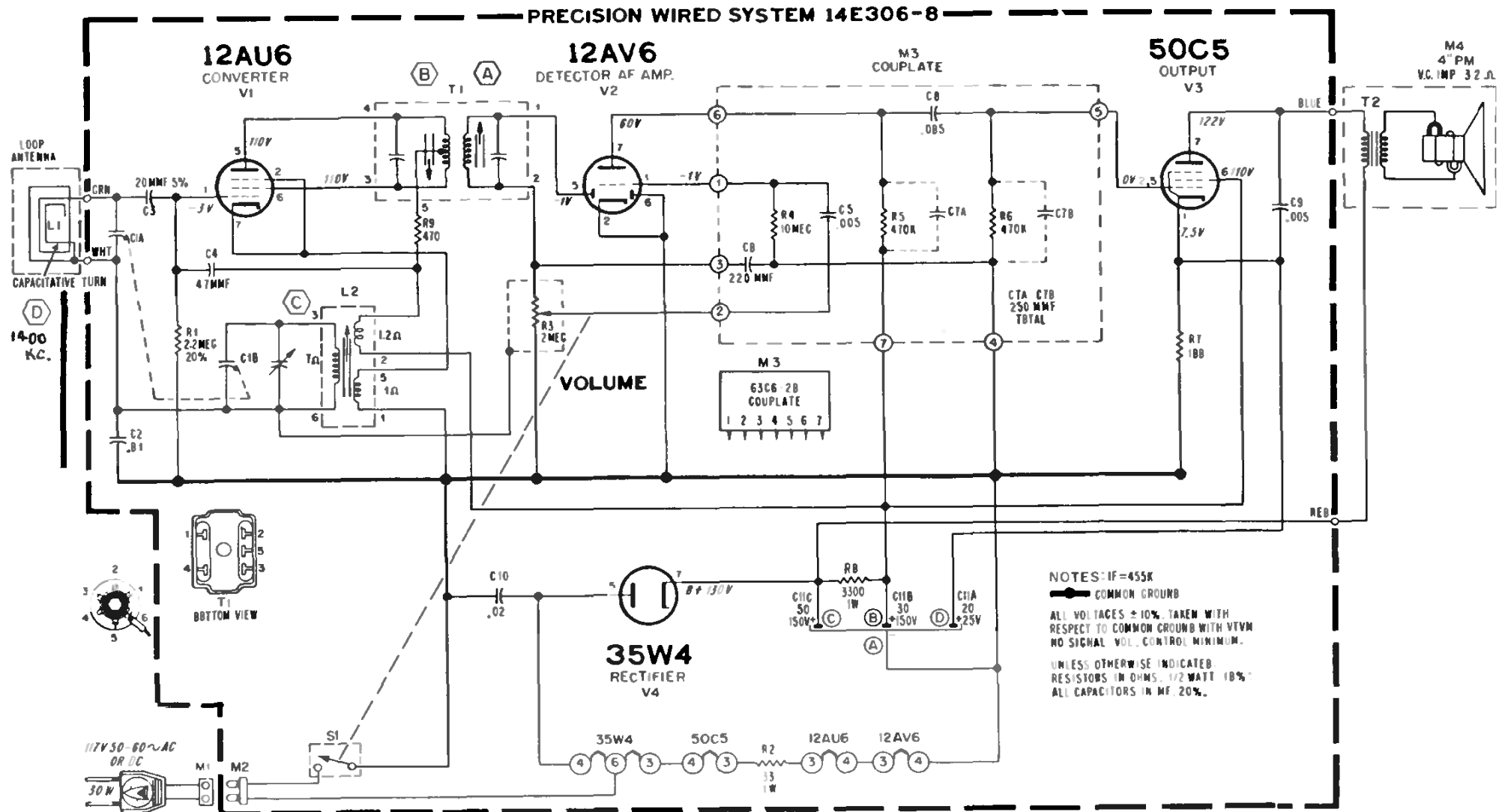


ADMIRAL

Chassis 4A4, used in Models Y3503, Y3508, Y3509



ALIGNMENT PROCEDURE

Set volume control full on.

Connect output meter across output secondary. Disconnect speaker and use a 3.2 ohm load.

Use lowest setting of signal generator capable of producing adequate indication on lowest scale of meter.

By using alignment tool 98A30-7, you can align the IF transformer slugs from the top of the chassis.