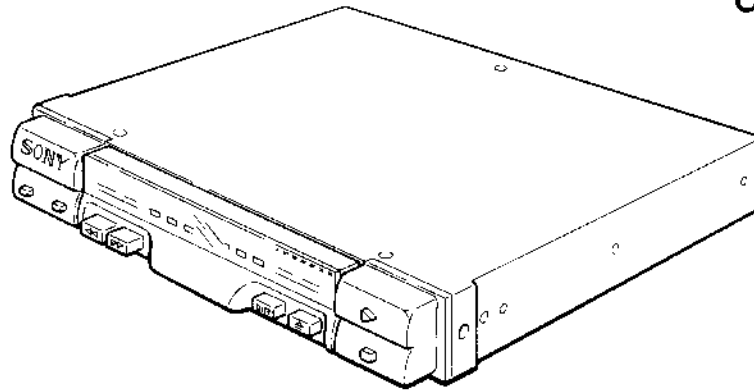


XK-8D

SERVICE MANUAL

*US Model
Canadian Model
AEP Model
E Model*



SPECIFICATIONS

Cassette player section

Tape track 4-track 2-channel stereo
Frequency response 30 - 16,000 kHz
Signal-to-noise ratio (A-weighted)

| | |
|----------------------|-------|
| TYPE II, IV cassette | 58 dB |
| TYPE I cassette | 55 dB |

Dolby NR effect More than 8 dB (CCIR/ARM)
Wow and flutter 0.095% (WRMS)
Fast winding time Approx. 110 sec.
(with Sony C-60 cassette)
Stereo separation: Between channels: More than 30 dB

General

Line outputs Phono jacks
Current drain 300 mA (in playback mode)
Dimensions 178 x 25 x 155 mm (w/h/d)
(7 $\frac{1}{8}$ x 1 x 6 $\frac{1}{8}$ inches)
not incl. projecting parts and controls

Mounting dimensions

Approx. 178 x 25 x 142 mm
(w/h/d) (7 $\frac{1}{8}$ x 1 x 5 $\frac{5}{8}$ inches)
not incl. projecting parts and controls

Cassette drawer projection

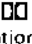
Approx. 85 mm

Weight Approx. 1.2 kg (2 lb 10 oz)

Accessories supplied

Mounting hardware (1 set)
Fuse (3.15 ampere...1, 1 ampere...2)

| | |
|------------------------------------|-----------|
| Model Name Using Simular Mechanism | XK-8 |
| Tape Transport Mechanism Type | MG-77A-90 |

Dolby noise reduction manufactured under license from
Dolby Laboratories Licensing Corporation.
"DOLBY" and the double-D symbol  are trademarks of
Dolby Laboratories Licensing Corporation.

STEREO CASSETTE PLAYER

SONY®


AUD



FEATURES

- **1/2 DIN size (25 mm height) stereo cassette player**
- **Auto-reverse function** plays back the other side of a cassette continuously.
- **AMS* function** enables you to locate the beginning of the selection being played and the beginning of the next selection.
- **Dolby NR (noise reduction) system**** reduces tape hiss noise.
- **Automatic tape type detection system** sets the optimum equalization according to the type of cassette during playback.
- **Self-store system** closes the cassette drawer automatically when it is left open for more than approx. 15 seconds.
- **Key-off-release function**, which releases the tape surface from the capstan and pinch roller when the power is turned off, prevents the tape from being damaged.

* Automatic Music Sensor

** Dolby noise reduction manufactured under license from Dolby Laboratories Licensing Corporation.
 "DOLBY" and the double-D  are trademarks of Dolby Laboratories Licensing Corporation.

SERVICING NOTE

Flexible Circuit Board Repairing

- Keep the temperature of the soldering iron around 270°C during repairing.
- Do not touch the soldering iron on the same conductor of the circuit board (within 3 times).
- Be careful not to apply force on the conductor when soldering or unsoldering.

Notes on chip component replacement

- Never reuse a disconnected chip component.
- Notice that the minus side of a tantalum capacitor may be damaged by heat.

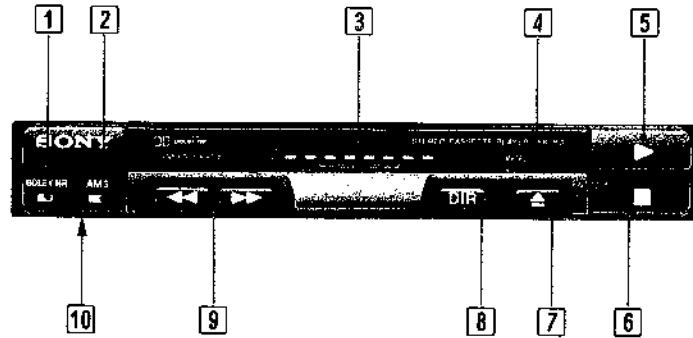
TABLE OF CONTENTS

| <u>Section</u> | <u>Title</u> | <u>Page</u> |
|------------------|--------------------------------------------|--------------|
| Specifications | | 1 |
| Features | | 2 |
| Servicing Note | | 2 |
| SECTION 1 | OUTLINE | 3 |
| SECTION 2 | ADJUSTMENT | |
| | 2-1. MECHANICAL ADJUSTMENTS | 4 |
| | 2-2. ELECTRICAL ADJUSTMENTS | 5-7 |
| SECTION 3 | DIAGRAMS | |
| | 3-1. MOUNTING DIAGRAM | 8-10 |
| | 3-2. SCHEMATIC DIAGRAM | 11-13 |
| SECTION 4 | EXPLODED VIEWS AND PARTS LIST | 17-21 |
| SECTION 5 | ELECTRICAL PARTS LIST | 22-24 |

SECTION 1 OUTLINE

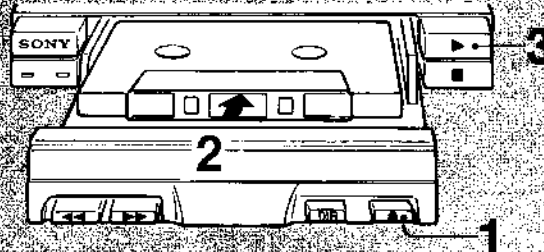
LOCATION AND FUNCTION OF CONTROLS

- 1 DOLBY NR (noise reduction) switch and indicator**
Depress this switch when playing back a Dolby NR processed tape. The indicator of this switch lights up.
- 2 AMS (automatic music sensor) button and indicator**
Used to locate the beginning of a selection. When a selection is being searched, the indicator of this button blinks.
- 3 Tape direction indicator**
- 4 METAL indicator**
Lights up when a TYPE II (CrO₂) or TYPE IV (metal) tape is being played back.
- 5 ▶ (playback) button**
- 6 ■ (stop) button**
- 7 ▲ (open/close) button**
- 8 DIR (direction mode) button**
- 9 ▶▶/◀◀ (fast winding) buttons**
- 10 Line outputs (phono jacks)**



TAPE PLAYBACK

- 1 Press ▲.**
The cassette drawer opens.
- 2 Insert a cassette until it clicks with the tape surface toward you.**
Tape direction indicator illuminates.
- 3 Press ▶.**
The cassette drawer closes and playback begins. When it is completed, playback of the other side begins.



| | |
|-----------------------------------------------------------|------------|
| To play back the other side of a cassette during playback | Press DIR. |
| To stop playback | Press ■. |
| To stop playback and open the cassette compartment | Press ▲. |

Caution

Insert a cassette completely into the drawer before closing it, otherwise... The drawer cannot be closed. In this case, press the ▲ button again.

The tape direction indicator flashes when... The cassette drawer is left open for more than 10 seconds. After a few seconds, it closes automatically (self-store system).

If the unit does not operate properly
Set the ignition key of your car to OFF and then press the ■ button.

On cassette drawer
• To close the drawer, press ▲. Never push the drawer itself forcibly.
• Take care not to press down or push up on the open drawer.

If the drawer does not open or close even if you press ▲... Press ▲ again.

Direction mode indicators

| Direction of the indicator | Side of cassette being played back |
|----------------------------|------------------------------------|
| ➡ | Upper side |
| ➡ | Lower side |

TO LISTEN TO ANOTHER PART OF A TAPE

| | Side of cassette being played back | Direction of playback | Desired mode and |
|-------------------------------------------------------------|------------------------------------|-----------------------|------------------|
| To locate the beginning of the following selection (AMS) | Upper side | ➡ | ▶▶ |
| | Lower side | ➡ | ◀◀ |
| To locate the beginning of the selection being played (AMS) | Upper side | ➡ | ◀◀ |
| | Lower side | ➡ | ▶▶ |
| To advance the tape* | Upper side | ➡ | ▶▶ |
| | Lower side | ➡ | ◀◀ |
| To resume playback after advancing* | Upper side | ➡ | ▶ |
| | Lower side | ➡ | ▶ |

* To rewind the tape and resume playback after rewinding, press the opposite ones.

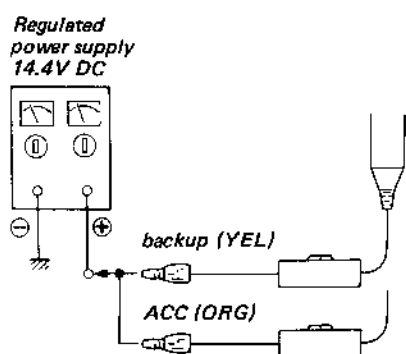
The desired selection cannot be located correctly:
—if there is noise in the space between selections.
—if a space is less than 4 seconds long.
—if there is a long pause in the music, a passage of low frequencies or very low volume or gradual increase or decrease of volume, as in some classical music.

SECTION 2 ADJUSTMENTS

- The adjustment should be performed in the order given in this service manual.
The adjustments should be performed for both L-CH and R-CH.
- Power-supply voltage is +14.4V DC as per Ad Hoc recommendation.
- Switches and controls should be set as follows unless otherwise specified.

AMS: OFF
DOLBY NR: OFF

- Notes on connecting the power supply.



Torque Measurement

| Mode | Torque Meter | Meter Reading |
|----------------------|--------------|------------------------------------------|
| NOR | CQ-102C | 45 – 70 g·cm (0.63 – 0.98 oz·inch) |
| REV | CQ-102RC | 45 – 70 g·cm (0.63 – 0.98 oz·inch) |
| FF/REW | CQ-201B | 60 – 110 g·cm (0.84 – 1.54 oz·inch) |
| Back Tension/ NOR | CQ-102C | 2.0 – 5.0 g·cm (0.028 – 0.07 oz·inch) |
| Back Tension/ REV | CQ-102RC | 2.0 – 5.0 g·cm (0.028 – 0.07 oz·inch) |

Tape Tension Measurement

| Mode | Tension Meter | Meter Reading |
|------|---------------|---------------------|
| NOR | CQ-403A | more than 80 g |
| REV | CQ-403R | (more than 2.82 oz) |

2-1. MECHANICAL ADJUSTMENTS

PRECAUTION

1. Clean the following parts with a denatured-alcohol-moistened swab:

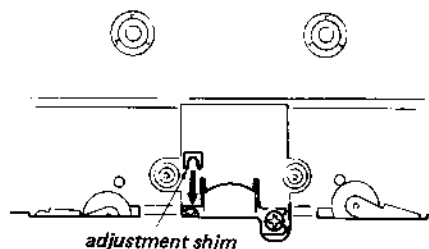
| | |
|---------------|--------------|
| playback head | pinch roller |
| erase head | capstan |
2. Demagnetize the playback head with a head demagnetizer.
3. Do not use a magnetized screwdriver for the adjustments.
4. After the adjustments, apply suitable locking compound to the parts adjusted.

Head Height Adjustment

Play back the mirror cassette (CQ-009C) in NOR and REV FWD mode. Then adjust the head height to eliminate tape curl and tape twist at the PB head and tape guides by replacing the adjustment shim.

Adjustment shim

| | t |
|--------------|-----|
| 3-513-237-01 | 0.1 |
| 3-513-237-11 | 0.2 |



2.2. ELECTRICAL ADJUSTMENTS

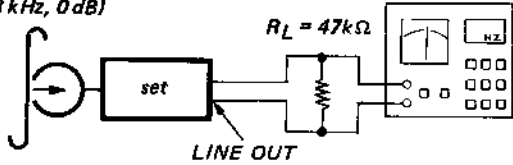
Tape Speed Adjustment

Procedure:

Mode: playback
(NOR/REV)

test tape
WS-48A
(3 kHz, 0 dB)

speed checker
LFM-30
or
digital frequency
counter



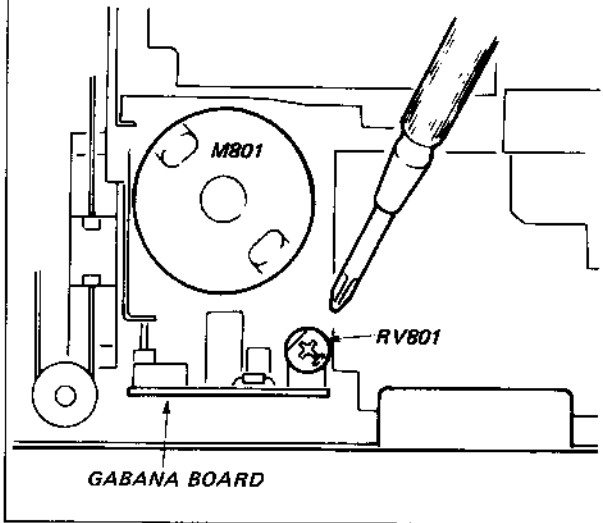
Adjust RV801 to meet the specifications.

Specifications:

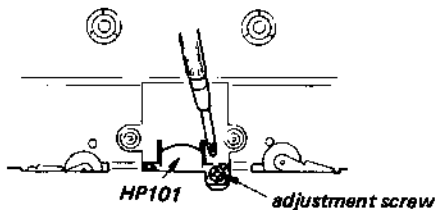
| Speed checker | Digital frequency counter |
|---------------|---------------------------|
| +0.3 - +1% | 3,010 - 3,030 Hz |

Frequency difference between the beginning and the end of the tape should be within ±0.3% (±10 Hz).

Adjustment Location: GABANA BOARD



Adjustment Location:

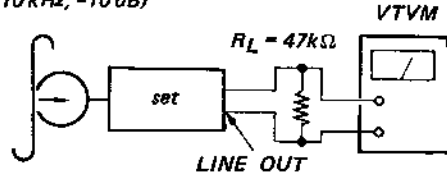


Playback Head Azimuth Adjustment

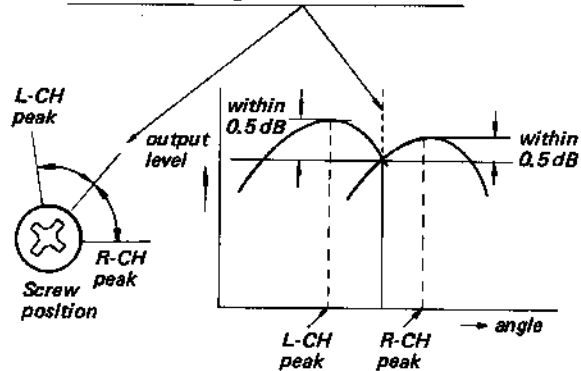
Procedure:

1. Mode: playback (NOR/REV)

test tape
P-4-A100
(10 kHz, -10 dB)

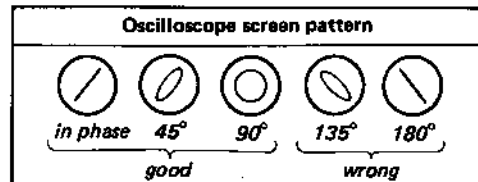
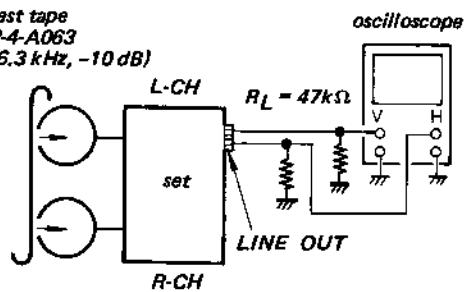


2. Turn the adjustment screw for the maximum output levels. If these levels do not match, turn the adjustment screw until both of output levels match together within 0.5 dB.



3. Phase Check
Confirm that phase difference between L-channel and R-channel is with 90°.

test tape
P-4-A063
(6.3 kHz, -10 dB)



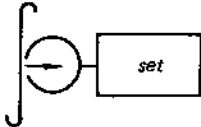
4. Repeat the above adjustment for REV playback mode, completing the adjustment by turning clockwise.
5. After the adjustment, lock the screw with locking compound.

Dolby Level Adjustment

Setting:

DOLBY NR Switch: OFF
 PLAY BACK Mode: NOR and REV
 FORWARD

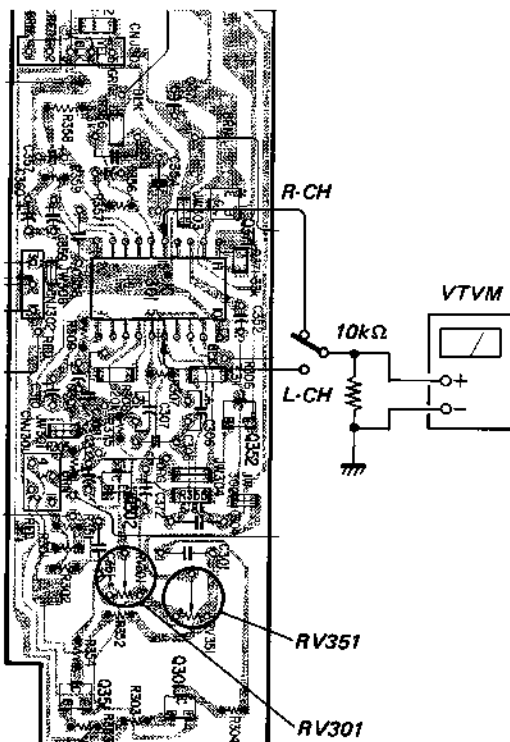
test tape:
 P-4-D400
 (400 Hz, 0 dB)
 & NORMAL TYPE
 (not used portion)



Procedures:

1. Play back the test tape P-4-D400.
2. Adjust RV301 (L-CH) and RV351 (R-CH) so that the readings of the VTVM become in -4.7 ± 0.2 dB (440 - 451 mV).
3. Playback NORMAL TAPE (not used portion) and confirm that the output level difference between ON and OFF of DOLBY NR is 5dB or more. (Both channels.)
4. The specification should be met in both NOR and REV FORWARD. If there is a level difference between NOR and REV, adjust RV301 or RV351 again so that the average becomes -4.7 dB.

[DOLBY BOARD]



REFERENCE

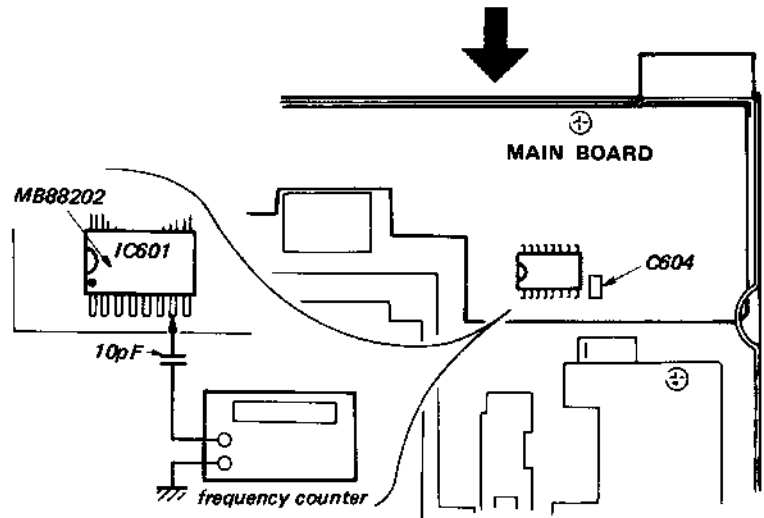
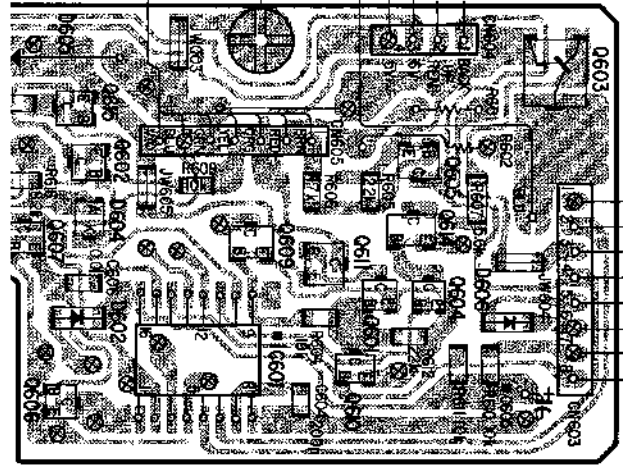
IC610 Clock Frequency Adjustment

- If the loading motor working-time is other than 3 – 3.5 seconds, perform this adjustment. The loading motor working time is preset in the micom (IC601), and can be measured with the wire rope of the cassette drawer removed.

Procedure:

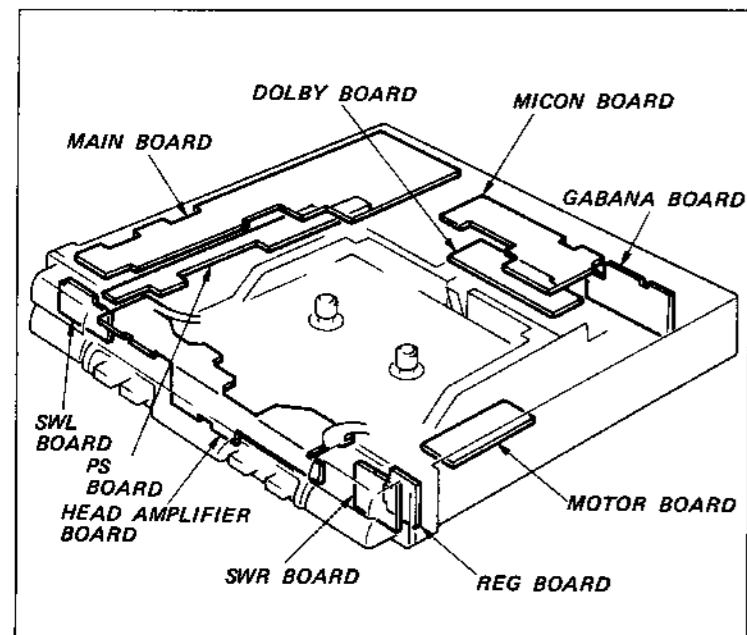
1. Connect a frequency counter to pin 7 of IC601 as illustrated and measure the frequency.
2. If the frequency is higher than 950 kHz, change the value of C604 to 220pF. If it is lower than 780 kHz, change to 180pF.

【MAIN BOARD】



SECTION 3
DIAGRAMS

CIRCUIT BOARDS LOCATION



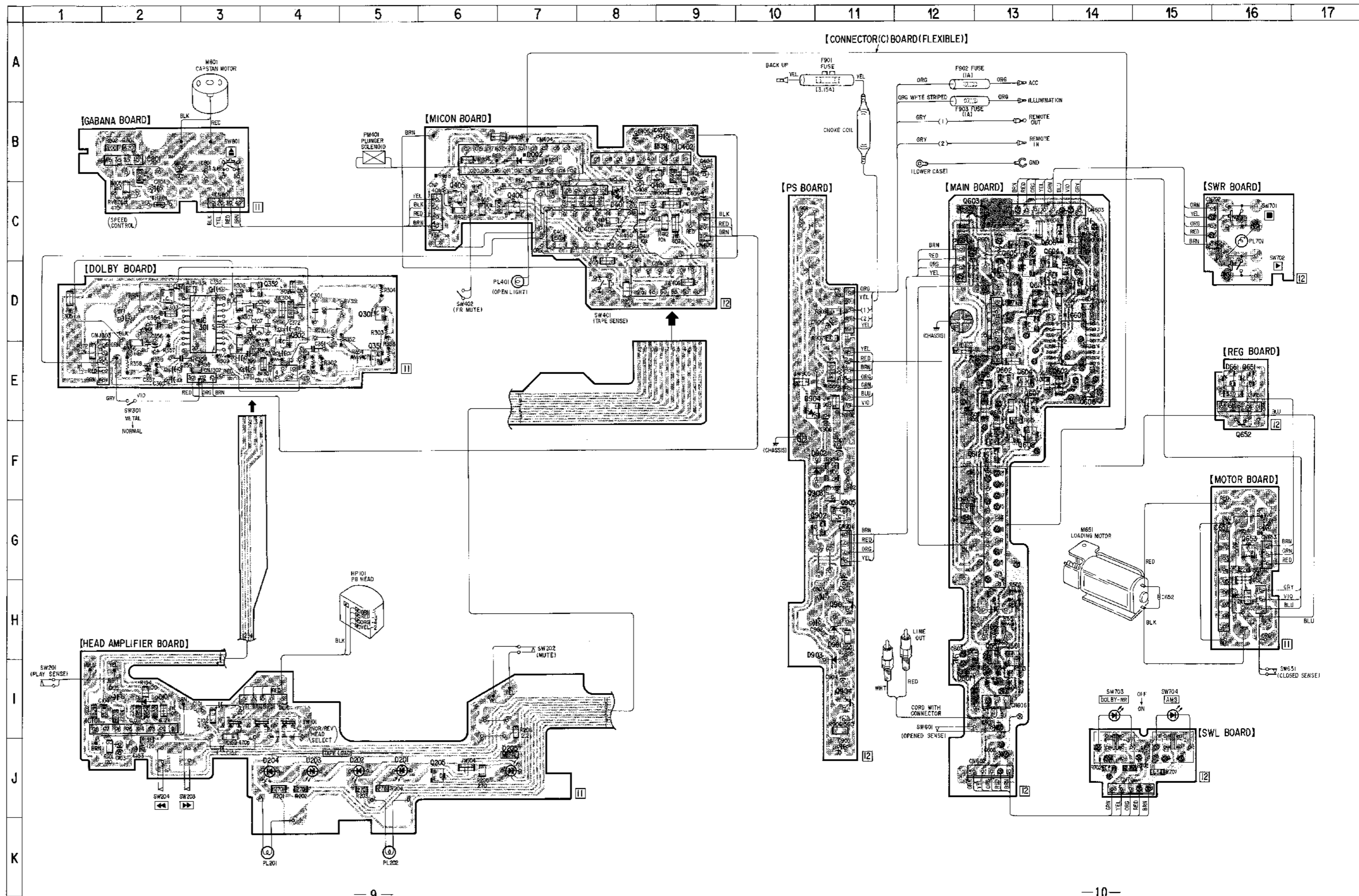
● Semiconductor Location

| Ref. No. | Location | Ref. No. | Location | Ref. No. | Location |
|----------|----------|----------|----------|----------|----------|
| D002 | B-7 | IC301 | D-3 | Q604 | D-14 |
| D101 | I-2 | IC401 | C-8 | Q605 | D-13 |
| D201 | J-5 | IC402 | B-8 | Q606 | E-14 |
| D202 | J-5 | IC601 | D-14 | Q607 | E-13 |
| D203 | J-4 | IC651 | G-16 | Q608 | F-13 |
| D204 | J-4 | IC801 | B-2 | Q609 | D-13 |
| D205 | J-7 | | | Q610 | D-14 |
| D301 | D-4 | Q205 | J-6 | Q611 | D-13 |
| D401 | C-8 | Q301 | D-5 | Q612 | F-13 |
| D601 | I-13 | Q302 | D-4 | Q613 | F-13 |
| D602 | E-14 | Q351 | E-5 | Q614 | D-13 |
| D603 | C-13 | Q352 | D-3 | Q615 | E-13 |
| D604 | E-13 | Q353 | D-4 | Q651 | E-16 |
| D605 | E-13 | Q371 | D-2 | Q652 | F-16 |
| D606 | C-14 | Q401 | B-9 | Q653 | G-16 |
| D651 | E-16 | Q405 | C-6 | Q901 | H-11 |
| D901 | H-11 | Q406 | C-7 | Q902 | G-11 |
| D902 | F-11 | Q501 | H-13 | Q903 | F-11 |
| D903 | I-11 | Q551 | H-13 | Q904 | I-11 |
| D904 | E-11 | Q601 | D-14 | Q905 | G-11 |
| | | Q602 | E-13 | | |
| IC101 | I-2 | Q603 | C-13 | | |

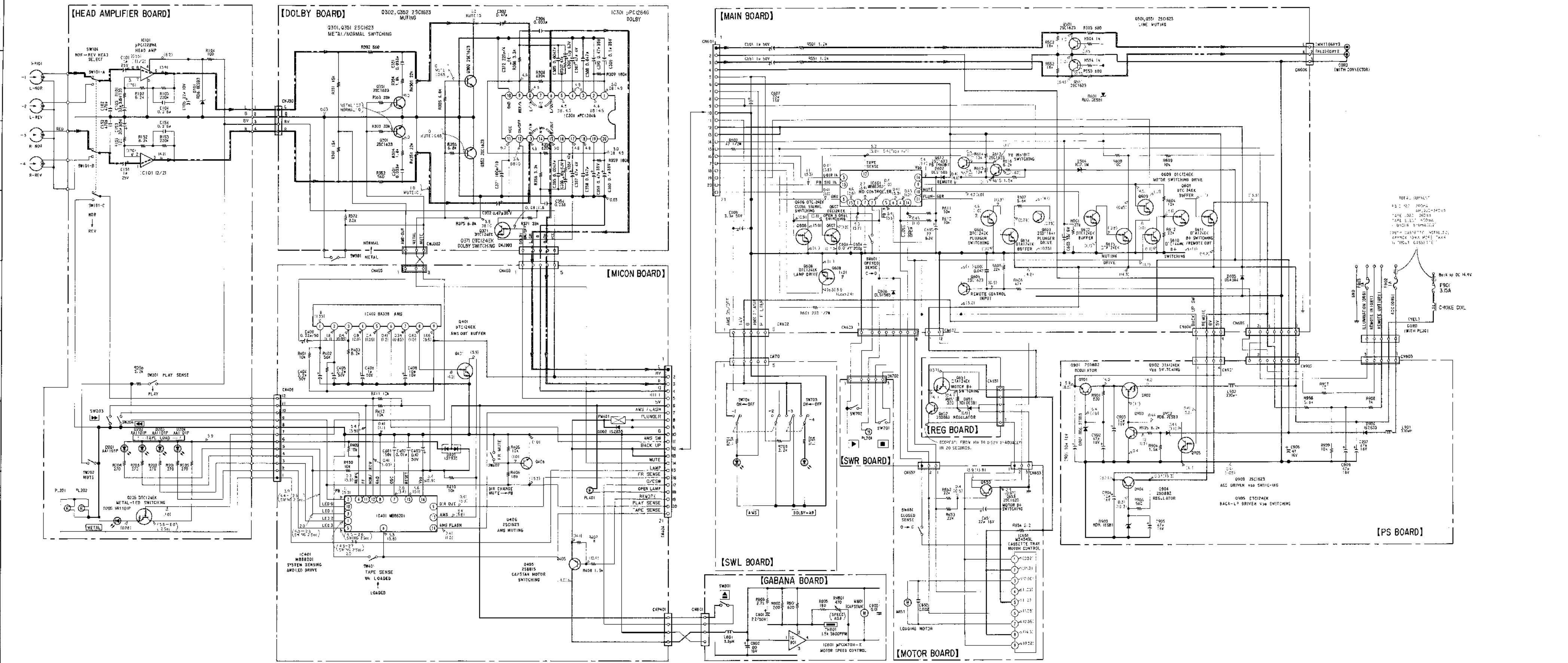
Note:

- — : parts extracted from the component side.
- — : parts extracted from the conductor side.
- ■ : indicates side identified with part number.
- ⊗ : Through hole.
- ⊙ : component-side pattern.

3-1. MOUNTING DIAGRAM



3-2. SCHEMATIC DIAGRAM



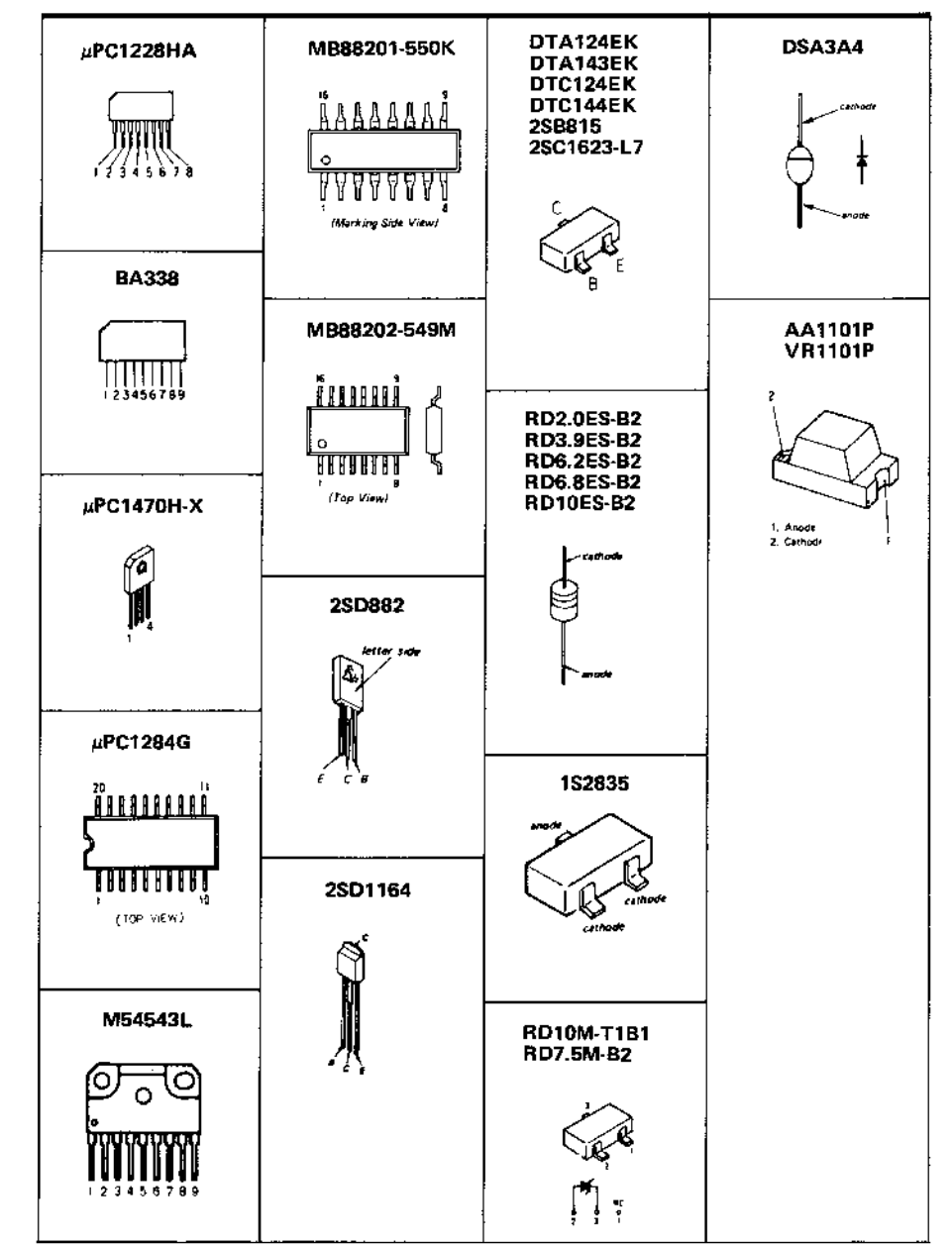
Note:

- All capacitors are in μF unless otherwise noted. pF : μF 50WV or less are not indicated except for electrolytics and tantalums.
- All resistors are in Ω and $\frac{1}{4}\text{W}$ or less unless otherwise specified.
- : 3 pins.
- Total current is measured with a cassette installed.
- Power voltage is 14.4 V and you will not be able to draw supply from ACC and look up power without terminals. Voltage variations may be noted due to normal audio tolerances.
- Headings are shown towards the ground unless otherwise noted.
- Headings are taken under no-signal conditions with a VOM 100 k Ω /V.
- : L-CH signal path
- : R-CH signal path

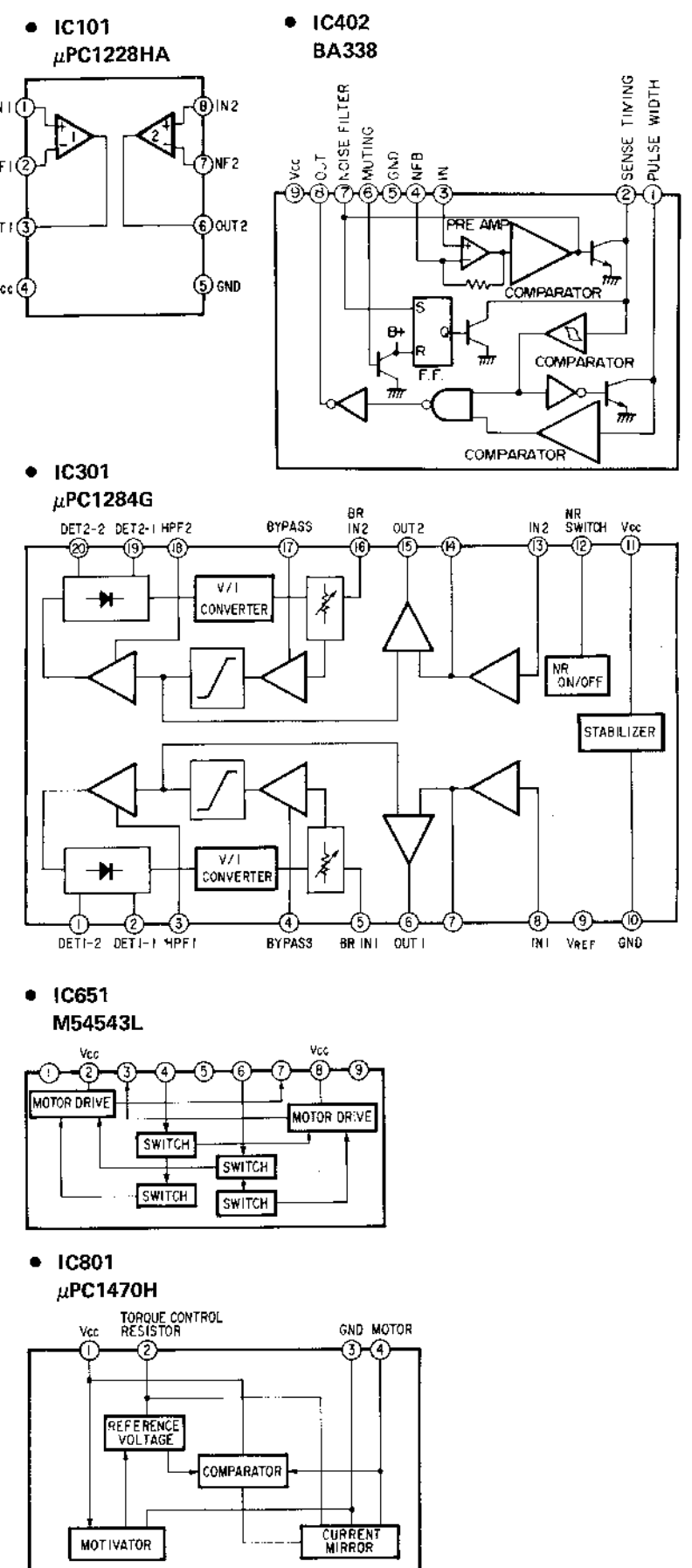
Switches:

| Ref. No. | Switch | Position |
|----------|---------------------|----------|
| SW101 | NOR/REV HEAD SELECT | NOR |
| SW201 | PLAY SENSE | OFF |
| SW202 | MUTE | OFF |
| SW203 | FF | OFF |
| SW204 | REW | OFF |
| SW301 | METAL TAPE SENSE | METAL |
| SW401 | FR MUTE | LOADED |
| SW402 | OPENED SENSE | OFF |
| SW601 | CLOSED SENSE | OFF |
| SW651 | STOP | OFF |
| SW701 | PLAY | OFF |
| SW702 | DOLBY NR | OFF |
| SW703 | AMS | OFF |
| SW704 | OPEN/CLOSE | OFF |

Semiconductor Lead Layouts



IC BLOCK DIAGRAMS



SECTION 4

EXPLODED VIEWS AND PARTS LIST

NOTE:

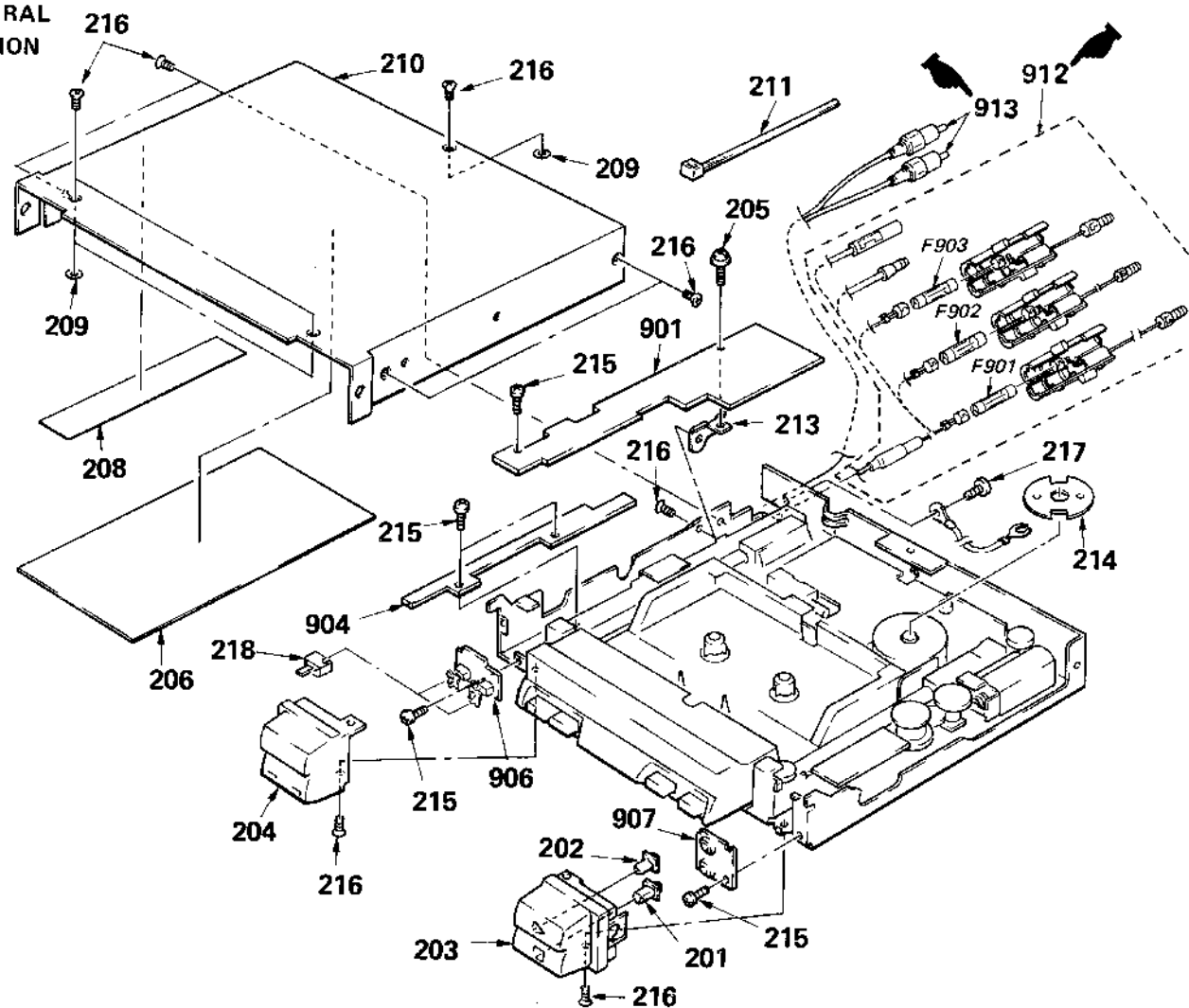
• The mechanical parts with no reference number in the exploded views are not supplied.

• Items marked "*" are not stocked since they are seldom required for routine service. Some delay should be anticipated when ordering these items.

• The construction parts of an assembled part are indicated with a collation number in the remark column.

• Color Indication of Appearance Parts
Example: (RED) KNOB, BALANCE
(WHITE)
Cabinet's Color Parts' Color

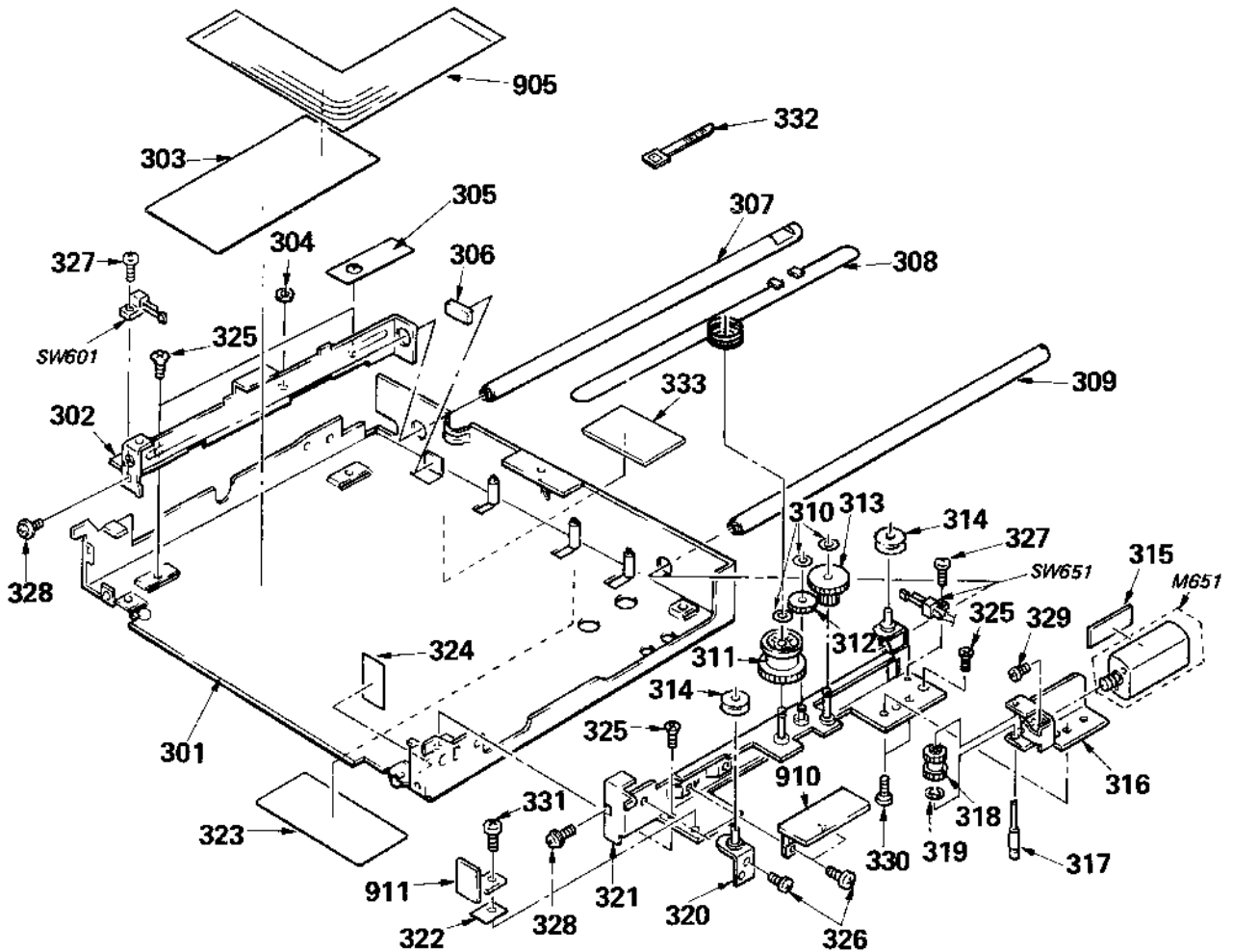
(1) GENERAL SECTION



| No. | Part No. | Description | Remarks | No. | Part No. | Description | Remarks |
|-----|---------------|---------------------|---------|------|---------------|-----------------------------|---------|
| 201 | 3-339-945-01 | BUTTON, STOP | | 215 | 7-621-255-55 | SCREW +P 2X8 | |
| 202 | 3-339-944-01 | BUTTON, PLAY | | 216 | 7-627-454-08 | SCREW, PRECISION +K 2.6X3.5 | |
| 203 | 3-339-972-01 | PIECE (RIGHT), NOSE | | 217 | 7-682-544-09 | SCREW +B 3X3 | |
| 204 | 3-339-983-11 | PIECE (LEFT), NOSE | | 218 | 3-339-971-01 | BUTTON, AMS | |
| 205 | 7-621-255-35 | SCREW, LOCK | | 901 | A-3216-291-A | PC BOARD ASSY, MAIN | |
| 206 | *3-342-439-02 | PLATE, SHIELD | | 904 | A-3216-321-A | MOUNTED PCB, PS | |
| 208 | *3-342-434-02 | SHEET (J) | | 906 | *1-624-924-11 | PC BOARD, SW (L) | |
| 209 | 3-342-428-01 | WASHER | | 907 | *1-624-923-11 | PC BOARD, SW (R) | |
| 210 | *3-339-987-02 | LID, UPPER | | 912 | 1-559-424-14 | CORD (WITH CONNECTOR) | |
| 211 | *3-671-893-00 | CLAMP (LOW TYPE) | | 913 | 1-559-539-11 | CORD (WITH PLUG) | |
| 213 | *3-342-404-03 | HOLDER, PC BOARD | | F901 | 1-532-419-11 | FUSE (3.15A) | |
| 214 | *3-342-423-01 | SHIELD PLATE, MOTOR | | F902 | 1-532-360-XX | FUSE (1A) | |
| | | | | F903 | 1-532-360-XX | FUSE (1A) | |

REVISED

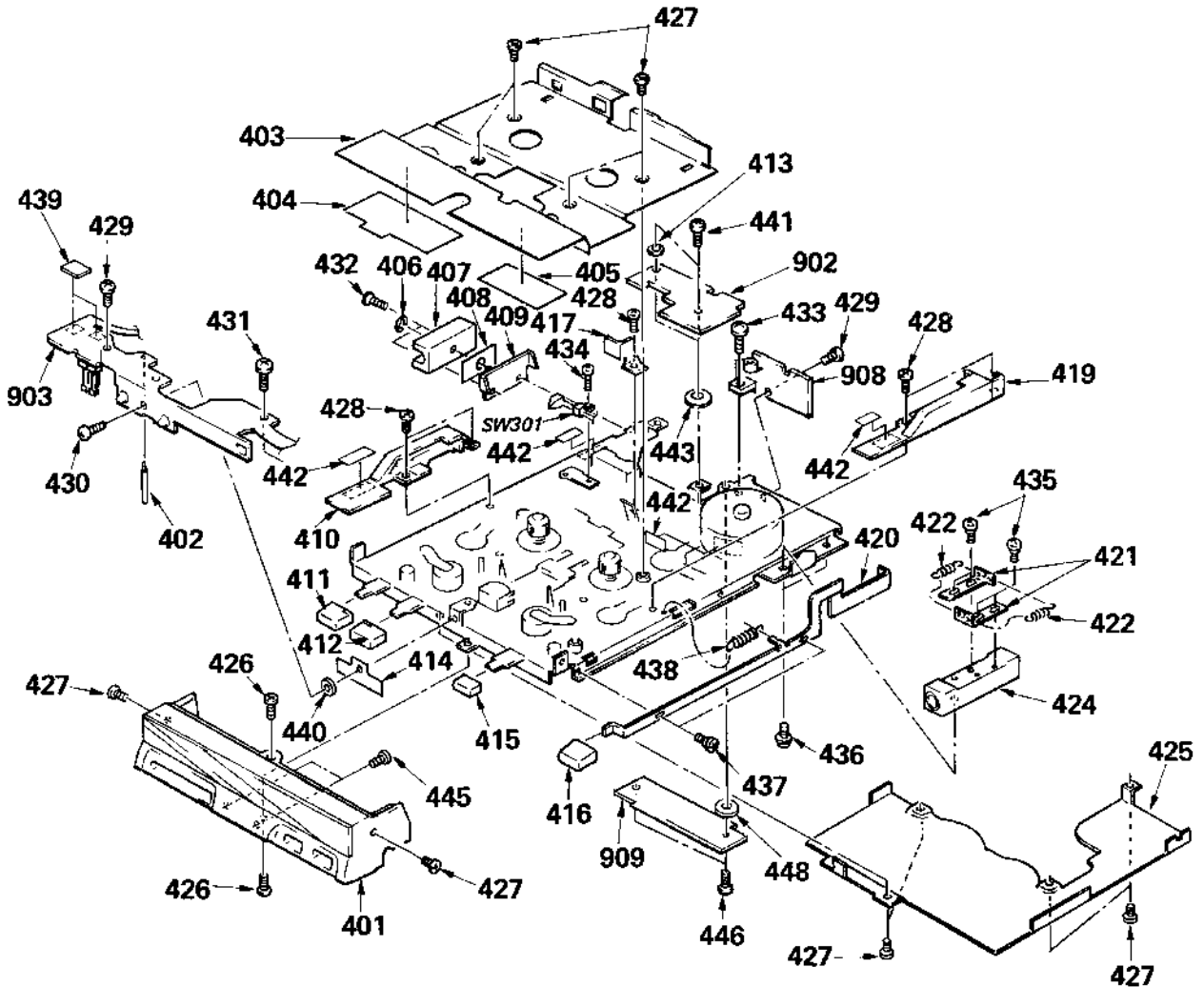
(2) LOWER CASE SECTION



| No. | Part No. | Description | Remarks |
|-----|---------------|----------------------------|---------|
| 301 | *X-3339-905-3 | CASE ASSY, LOWER | |
| 302 | *X-3339-904-1 | BRACKET (LEFT) ASSY, SHAFT | |
| 303 | *3-342-429-01 | COVER, SHEET | |
| 304 | 3-342-428-01 | WASHER | |
| 305 | *3-342-417-01 | SHEET (G), INSULATING | |
| 306 | 9-911-840-XX | CUSHION (A) | |
| 307 | *3-339-966-13 | SHAFT, SLIDE | |
| 308 | 3-342-419-01 | ROPE, WIRE | |
| 309 | *3-339-966-02 | SHAFT, SLIDE | |
| 310 | 3-312-434-00 | WASHER, SLIT | |
| 311 | 4-913-251-01 | GEAR (C), DRIVING | |
| 312 | 3-339-964-01 | GEAR (B) | |
| 313 | 3-339-950-01 | GEAR (A) | |
| 314 | 3-817-114-11 | PULLEY P8 | |
| 315 | *4-826-732-01 | CUSHION (MOTOR) | |
| 316 | *3-339-976-01 | BRACKET, MOTOR WHEEL | |
| 317 | 3-339-952-01 | SHAFT, DRIVING WHEEL | |
| 318 | 3-339-965-01 | WHEEL, DRIVING | |
| 319 | 7-624-104-04 | STOP RING 2.0, TYPE -E | |
| 320 | *X-3339-902-3 | BRACKET ASSY, PULLEY | |

| No. | Part No. | Description | Remarks |
|-------|---------------|-------------------------------------------|---------|
| 321 | *X-3339-903-4 | BRACKET (RIGHT) ASSY, SHAFT | |
| 322 | *3-342-433-01 | SHEET (A), ADHESIVE | |
| 323 | *3-342-401-01 | (US, AEP, E)... LABEL, MODEL NUMBER (EXP) | |
| | *3-342-402-01 | (Canadian) ... LABEL, MODEL NUMBER | |
| 324 | *3-342-416-01 | SHEET (F), INSULATING | |
| 325 | 7-627-454-08 | SCREW, PRECISION +K 2.6X3.5 | |
| 326 | 7-621-775-08 | SCREW +B 2.6X3 | |
| 327 | 7-627-850-28 | SCREW, PRECISION +P 1.4X3 | |
| 328 | 3-703-502-31 | SCREW, PRECISION +W 1.4X3 | |
| 329 | 7-627-553-17 | PRECISION SCREW +P 2X2 TYPE 3 | |
| 330 | 7-682-544-04 | SCREW +B 3X3 | |
| 331 | 7-682-546-04 | SCREW +B 3X5 | |
| 332 | *3-655-653-11 | BAND (TALTON), BINDING | |
| 333 | 3-305-239-00 | LABEL, DOLBY | |
| 905 | 1-622-171-12 | PC BOARD, CONNECTOR (C) | |
| 910 | *1-623-310-11 | PC BOARD, MOTOR | |
| 911 | *1-623-312-11 | PC BOARD, REG | |
| M651 | X-3339-906-1 | MOTOR ASSY (LOADING) | |
| SW601 | 31-553-226-00 | SWITCH, LEAF (OPENED SENSE) | |
| SW651 | 31-553-226-00 | SWITCH, LEAF (CLOSED SENSE) | |

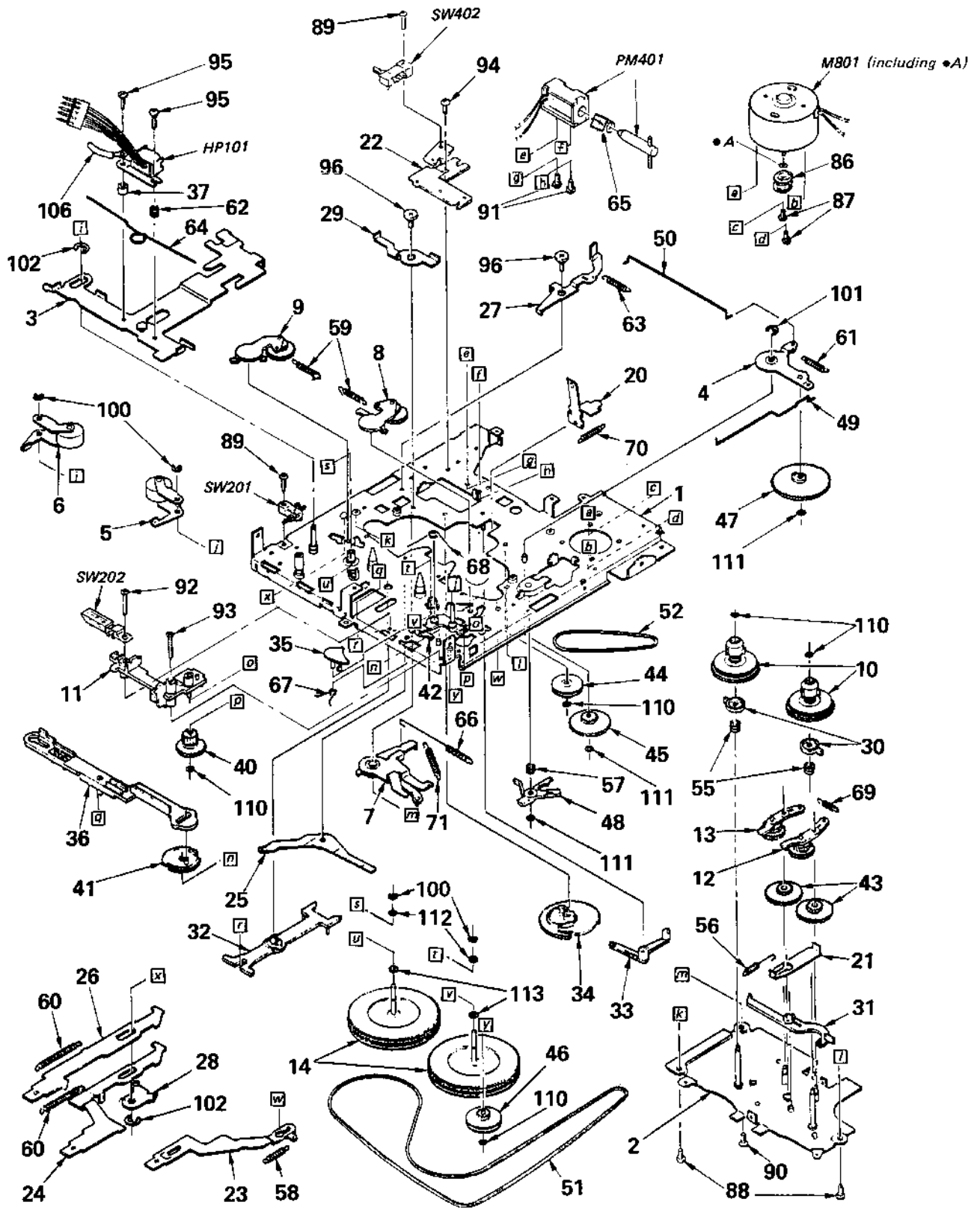
(3) CASSETTE DRAWER SECTION



| No. | Part No. | Description | Remarks |
|-----|---------------|-------------------------------|---------|
| 401 | A-3235-577-A | PIECE (C) ASSY, NOSE | |
| 402 | *3-314-051-00 | CLAMP, LEAD | |
| 403 | *3-339-984-01 | PLATE (UPPER), ORNAMENTAL, MD | |
| 404 | *3-342-426-01 | SHEET (I), INSULATING | |
| 405 | *3-342-425-01 | SHEET (H), INSULATING | |
| 406 | 7-624-102-04 | RING, RETAINING, E1.5 | |
| 407 | 3-339-958-03 | GUIDE | |
| 408 | *3-342-422-01 | CUSHION, GUIDE | |
| 409 | *X-3339-901-4 | BRACKET ASSY, GUIDE | |
| 410 | 3-339-981-01 | GUIDE (LEFT), CASSETTE | |
| 411 | 3-339-967-01 | BUTTON, REW | |
| 412 | 3-339-968-01 | BUTTON, FF | |
| 413 | 3-342-428-01 | WASHER | |
| 414 | *3-339-998-01 | SHEET (E), INSULATING | |
| 415 | 3-339-970-01 | BUTTON, DIR | |
| 416 | 3-339-969-01 | BUTTON, O/C | |
| 417 | 3-339-985-01 | HOUSE, LAMP | |
| 419 | 3-339-982-01 | GUIDE (RIGHT), CASSETTE | |
| 420 | 3-339-979-01 | LEVER, O/C | |
| 421 | 4-913-209-11 | SLIDER, WT | |
| 422 | 3-578-277-00 | SPRING, TENSION | |
| 424 | 3-339-977-01 | BEARING, SLIDE | |
| 425 | *3-339-986-01 | PLATE (LOWER), ORNAMENTAL, MD | |
| 426 | 7-627-852-28 | +P 1.7X3 | |

| No. | Part No. | Description | Remarks |
|-------|---------------|----------------------------------|---------|
| 427 | 7-627-852-38 | SCREW, PRECISION +P1.7X1.8 TYPE3 | |
| 428 | 7-627-852-08 | SCREW, PRECISION +P 1.7X2.5 | |
| 429 | 7-621-255-55 | SCREW +P 2X8 | |
| 430 | 7-621-255-35 | SCREW +P 2X5 | |
| 431 | 7-685-131-19 | SCREW +P 2.6X4 TYPE2 NON-SLIT | |
| 432 | 7-627-454-08 | SCREW, PRECISION +K 2.6X3.5 | |
| 433 | 7-682-546-09 | SCREW +B 3X5 | |
| 434 | 7-627-850-28 | SCREW, PRECISION +P 1.4X3 | |
| 435 | 3-311-772-00 | SHAFT (A), STOPPER | |
| 436 | 3-669-607-00 | +PSW (SMALL ROUND) 2.6 | |
| 437 | 3-339-962-01 | SCREW, O/C LEVER FITTING | |
| 438 | 3-533-373-00 | SPRING, TENSION | |
| 440 | *3-339-997-01 | SPACER | |
| 441 | 7-621-255-15 | SCREW +P 2X3 | |
| 442 | *3-342-427-02 | SHEET, FLEXIBLE BOARD | |
| 443 | 3-342-444-01 | WASHER (ADHEASIVE) | |
| 445 | 3-309-597-31 | SCREW (1.4), TAPPING, PRECISION | |
| 446 | 7-621-255-25 | SCREW +P 2X4 | |
| 448 | *3-322-413-11 | SPACER, INSULATING | |
| 902 | A-3216-293-A | MOUNTED PCB, MICRO COMPUTER | |
| 903 | A-3216-296-A | MOUNTED PCB, HEAD AMPLIFIER | |
| 908 | *1-624-926-11 | PC BOARD, GOVERNOR | |
| 909 | *A-3213-671-A | MOUNTED PCB, DOLBY | |
| SW301 | 1-571-002-11 | SWITCH, SLIDE (METAL) | |

(4) TAPE TRANSPORT MECHANISM SECTION
(MG-77A-90)



| No. | Part No. | Description | Remarks | No. | Part No. | Description | Remarks |
|-----|---------------|----------------------------|---------|-------|---------------|----------------------------------|---------|
| 1 | *3-391-673-01 | CHASSIS ASSY, MAIN | | 55 | 3-391-606-01 | SPRING, BACK TENTION | |
| 2 | *3-391-659-01 | CHASSIS ASSY, SUB | | 56 | 3-391-607-01 | SPRING, LEVER, CANCEL | |
| 3 | *3-391-660-01 | CHASSIS ASSY, SLIDE | | 57 | 3-391-608-01 | SPRING, DETECTOR | |
| 4 | *3-391-661-01 | ARM ASSY, GEAR | | 58 | 3-391-609-01 | SPRING, LEVER, DIR | |
| 5 | 3-391-662-01 | ARM (F) ASSY, PINCH ROLLER | | 59 | 3-391-610-01 | SPRING, ARM, FF | |
| 6 | 3-391-663-01 | ARM (R) ASSY, PINCH ROLLER | | 60 | 3-391-611-01 | SPRING, LEVER, FF | |
| 7 | *3-391-664-01 | LIMITER ASSY | | 61 | 3-391-613-01 | SPRING, ARM, GEAR | |
| 8 | 3-391-665-01 | ARM (F) ASSY, FF | | 62 | 3-391-614-01 | SPRING, AZIMUTH | |
| 9 | 3-391-666-01 | ARM (R) ASSY, FF | | 63 | 3-391-615-01 | SPRING, LATCH, FR | |
| 10 | 3-391-667-01 | SPINDLE ASSY, REEL | | 64 | 3-391-616-01 | SPRING, PINCH ROLLER | |
| 11 | 3-391-668-01 | SELECTOR (TOP) ASSY | | 65 | 3-391-617-01 | SPRING, PLUNGER | |
| 12 | 3-391-669-01 | ARM (F) ASSY, TU | | 66 | 3-391-618-01 | SPRING, RETURN | |
| 13 | 3-391-670-01 | ARM (R) ASSY, TU | | 67 | 3-391-619-01 | SPRING, LATCH, GEAR | |
| 14 | 3-391-671-01 | FLYWHEEL ASSY | | 68 | 3-391-620-01 | SPRING, RATCHET | |
| 20 | 3-391-674-01 | PLATE (B), HOLD, CASSETTE | | 69 | 3-391-621-01 | SPRING, ARM (TU) | |
| 21 | *3-391-625-01 | LEVER, CANCEL | | 70 | 3-391-622-01 | SPRING, HOLD, CASSETTE | |
| 22 | *3-391-626-01 | BRACKET, SW | | 71 | 3-391-623-01 | SPRING, LIMITER | |
| 23 | *3-391-652-01 | LEVER, DIR | | 86 | 3-391-675-01 | PULLEY (A), MOTOR | |
| 24 | *3-391-653-01 | LEVER, FF | | 87 | 7-627-553-17 | PRECISION SCREW +P 2X2 TYPE 3 | |
| 25 | *3-391-648-01 | LEVER, FF LINK | | 88 | 7-627-553-37 | PRECISION SCREW +P 2X3 TYPE 3 | |
| 26 | *3-391-654-01 | LEVER, REW | | 89 | 7-627-853-58 | SCREW, PRECISION +P 2X5 TYPE3 | |
| 27 | *3-391-627-01 | LATCH, FR | | 90 | 7-621-555-10 | SCREW +K 2X3 | |
| 28 | *3-391-630-01 | LOCK, FR INTER | | 91 | 7-621-772-08 | SCREW +B 2X3 | |
| 29 | *3-391-633-01 | LEVER, PUSH | | 92 | 7-621-772-58 | SCREW +B 2X10 | |
| 30 | 3-391-635-01 | DISK, DETECTOR | | 93 | 7-621-772-68 | SCREW +B 2X12 | |
| 31 | 3-391-636-01 | LEVER, DETECTOR LINK | | 94 | 7-685-790-04 | SCREW +PTT 2.6X4 (S) | |
| 32 | 3-391-637-01 | ARM, CONVERT | | 95 | 3-590-786-00 | SCREW, BIND | |
| 33 | 3-391-641-01 | LATCH, LOAD GEAR | | 96 | 3-391-612-01 | SCREW, SPECIAL | |
| 34 | 3-391-655-01 | GEAR, LOAD CAM | | 100 | 7-624-102-04 | STOP RING 1.5, TYPE -E | |
| 35 | 3-391-644-01 | LATCH, GEAR | | 101 | 7-624-104-04 | STOP RING 2.0, TYPE -E | |
| 36 | 3-391-656-01 | LINKAGE, SELECTOR | | 102 | 7-624-106-04 | STOP RING 3.0, TYPE -E | |
| 37 | 3-391-601-01 | SPACER, HEAD | | 106 | 7-623-505-01 | LUG, 2 | |
| 40 | 3-594-307-01 | GEAR, REDUCTION | | 110 | 3-570-615-00 | POLY-WASHER (DIA.1.2) | |
| 41 | 3-594-314-01 | GEAR, SELECTOR | | 111 | 3-676-387-00 | POLY-SLIDER (DIA.1.6) | |
| 42 | 3-594-318-01 | RATCHET | | 112 | 3-701-437-11 | WASHER (DIA.2.0) | |
| 43 | 3-594-310-01 | GEAR, COUNTER | | 113 | 3-701-437-01 | WASHER (DIA.2.0) | |
| 44 | 3-594-313-01 | PULLEY, TU | | HP101 | 11-543-413-11 | HEAD, MAGNETIC (PLAYBACK) | |
| 45 | 3-594-309-01 | GEAR (D), REDUCTION | | M801 | 13-391-672-01 | MOTOR ASSY (CAPSTAN) | |
| 46 | 3-594-308-01 | PULLEY, IDLE | | PM401 | 11-454-359-00 | SOLENOID, PLUNGER | |
| 47 | 3-594-322-01 | GEAR, CAM | | SW201 | 11-571-004-11 | SWITCH, PUSH (1 KEY)(PLAY SENSE) | |
| 48 | 3-594-312-01 | DETECTOR | | SW202 | 11-571-003-11 | SWITCH, LEAF (MUTING) | |
| 49 | 3-391-602-01 | LINK, AUTO DIR | | SW402 | 11-571-004-11 | SWITCH, PUSH (1 KEY)(FR MUTING) | |
| 50 | 3-391-603-01 | LINK, FR LATCH | | | | | |
| 51 | 3-391-604-01 | BELT, MAIN | | | | | |
| 52 | 3-391-605-01 | BELT, SUB | | | | | |

SECTION 5 ELECTRICAL PARTS LIST

NOTE:

Items marked " * " are not stocked since they are seldom required for routine service. Some delay should be anticipated when ordering these items.

If there are two or more same circuits in a set such as a stereophonic machine, only typical circuit parts may be indicated and capacitors and resistors in other same circuits may be omitted.

CAPACITORS:
MF:µF, PF:µF.

RESISTORS
- All resistors are in ohms.
- F : nonflammable

COILS
- MMH : mH, UH : µH

SEMICONDUCTORS
In each case, U : V, for example:
UA...: µA..., UPA...: µPA..., UPC...: µPC...,
UPD...: µPD...

| ELECTRICAL PARTS | | | | | | |
|------------------|---------------|-----------------------------|-----|-------|--|--|
| Ref.No. | Part No. | Description | | | | |
| 901 | A-3216-291-A | PC BOARD ASSY, MAIN | | | | |
| 902 | A-3216-293-A | MOUNTED PCB, MICRO COMPUTER | | | | |
| 903 | A-3216-296-A | MOUNTED PCB, HEAD AMPLIFIER | | | | |
| 904 | A-3216-321-A | MOUNTED PCB, PS | | | | |
| 905 | 1-622-171-12 | PC BOARD, CONNECTOR (C) | | | | |
| 906 | *1-624-924-11 | PC BOARD, SW (L) | | | | |
| 907 | *1-624-923-11 | PC BOARD, SW (R) | | | | |
| 908 | *1-624-926-11 | PC BOARD, GOVERNOR | | | | |
| 909 | *A-3213-671-A | MOUNTED PCB, DOLBY | | | | |
| 910 | *1-623-310-11 | PC BOARD, MOTOR | | | | |
| 911 | *1-623-312-11 | PC BOARD, REG | | | | |
| 912 | 1-559-424-14 | CORD (WITH CONNECTOR) | | | | |
| 913 | 1-559-539-11 | CORD (WITH PLUG) | | | | |
| C001 | 1-163-035-00 | CERAMIC CHIP 0.047MF | 10% | 25V | | |
| C101 | 1-119-501-00 | ELECT 1MF | 20% | 25V | | |
| C102 | 1-163-133-00 | CERAMIC CHIP 470PF | 5% | 50V | | |
| C103 | 1-131-386-00 | TANTALUM 33MF | 10% | 3.15V | | |
| C104 | 1-163-024-00 | CERAMIC CHIP 0.018MF | 10% | 50V | | |
| C105 | 1-124-234-00 | ELECT 22MF | 20% | 10V | | |
| C151 | 1-119-501-00 | ELECT 1MF | 20% | 25V | | |
| C152 | 1-163-133-00 | CERAMIC CHIP 470PF | 5% | 50V | | |
| C153 | 1-131-386-00 | TANTALUM 33MF | 10% | 3.15V | | |
| C154 | 1-163-024-00 | CERAMIC CHIP 0.018MF | 10% | 50V | | |
| C301 | 1-163-034-00 | CERAMIC CHIP 0.033MF | | 50V | | |
| C302 | 1-131-345-00 | TANTALUM 0.47MF | 20% | 35V | | |
| C304 | 1-136-491-00 | FILM 0.033MF | 5% | 50V | | |
| C305 | 1-130-479-00 | MYLAR 0.0047MF | 5% | 50V | | |
| C306 | 1-124-462-00 | ELECT 10MF | 20% | 6.3V | | |
| C307 | 1-124-432-00 | ELECT 47MF | 20% | 4V | | |
| C308 | 1-136-493-00 | FILM 0.047MF | 5% | 50V | | |
| C309 | 1-131-402-00 | TANTALUM 0.1MF | 20% | 35V | | |
| C310 | 1-131-345-00 | TANTALUM 0.47MF | 20% | 35V | | |
| C351 | 1-163-034-00 | CERAMIC CHIP 0.033MF | | 50V | | |
| C352 | 1-131-345-00 | TANTALUM 0.47MF | 20% | 35V | | |
| C354 | 1-136-491-00 | FILM 0.033MF | 5% | 50V | | |
| C355 | 1-130-479-00 | MYLAR 0.0047MF | 5% | 50V | | |
| C356 | 1-124-462-00 | ELECT 10MF | 20% | 6.3V | | |
| C357 | 1-124-432-00 | ELECT 47MF | 20% | 4V | | |
| C358 | 1-136-493-00 | FILM 0.047MF | 5% | 50V | | |
| C359 | 1-131-345-00 | TANTALUM 0.47MF | 20% | 35V | | |
| C360 | 1-131-402-00 | TANTALUM 0.1MF | 20% | 35V | | |
| C371 | 1-124-584-00 | ELECT 100MF | 20% | 10V | | |
| C372 | 1-124-434-00 | ELECT 220MF | 20% | 4V | | |
| C401 | 1-163-121-00 | CERAMIC CHIP 150PF | 5% | 50V | | |
| C402 | 1-163-021-00 | CERAMIC CHIP 0.01MF | 10% | 50V | | |
| C403 | 1-124-465-00 | ELECT 0.47MF | 20% | 50V | | |
| C404 | 1-124-257-00 | ELECT 2.2MF | 20% | 50V | | |

| ELECTRICAL PARTS | | | | | | |
|------------------|---------------|-----------------------|-----|------|--|--|
| Ref.No. | Part No. | Description | | | | |
| C405 | 1-124-257-00 | ELECT 2.2MF | 20% | 50V | | |
| C406 | 1-124-255-00 | ELECT 1MF | 20% | 50V | | |
| C408 | 1-124-462-00 | ELECT 10MF | 20% | 10V | | |
| C409 | 1-124-464-11 | ELECT 0.22MF | 20% | 50V | | |
| C501 | 1-124-255-00 | ELECT 1MF | 20% | 50V | | |
| C551 | 1-124-255-00 | ELECT 1MF | 20% | 50V | | |
| C603 | 1-124-242-00 | ELECT 33MF | 20% | 16V | | |
| C604 | 1-163-121-00 | CERAMIC CHIP 150PF | 5% | 50V | | |
| C605 | 1-124-222-00 | ELECT 22MF | 20% | 6.3V | | |
| C606 | 1-163-021-00 | CERAMIC CHIP 0.01MF | 10% | 50V | | |
| C607 | 1-124-234-00 | ELECT 22MF | 20% | 16V | | |
| C608 | 1-124-258-00 | ELECT 3.3MF | 20% | 50V | | |
| C651 | 1-124-234-00 | ELECT 22MF | 20% | 16V | | |
| C652 | 1-161-494-00 | CAP, CERAMIC 0.022MF | | | | |
| C801 | 1-124-257-00 | ELECT 2.2MF | 20% | 50V | | |
| C802 | 1-126-101-11 | ELECT 100MF | 20% | 16V | | |
| C803 | 1-163-021-00 | CERAMIC CHIP 0.01MF | 10% | 50V | | |
| C901 | 1-124-462-00 | ELECT 10MF | 20% | 16V | | |
| C902 | 1-124-236-00 | ELECT 47MF | 20% | 16V | | |
| C903 | 1-124-462-00 | ELECT 10MF | 20% | 16V | | |
| C904 | 1-124-462-00 | ELECT 10MF | 20% | 16V | | |
| C905 | 1-124-236-00 | ELECT 47MF | 20% | 16V | | |
| C906 | 1-124-236-00 | ELECT 47MF | 20% | 16V | | |
| C907 | 1-124-236-00 | ELECT 47MF | 20% | 16V | | |
| C909 | 1-124-255-00 | ELECT 47MF | 20% | 16V | | |
| CN404 | 1-563-932-11 | CONNECTOR, F.P.C 21P | | | | |
| CN406 | 1-562-886-11 | CONNECTOR, F.P.C 12P | | | | |
| CN601 | *1-562-664-11 | SOCKET, CONNECTOR 21P | | | | |
| CN603 | *1-564-007-00 | PIN, CONNECTOR 8P | | | | |
| CN607 | *1-564-001-11 | PIN, CONNECTOR 2P | | | | |
| CNJ301 | 1-562-631-11 | SOCKET, CONNECTOR | | | | |
| CNP701 | *1-564-004-00 | PIN, CONNECTOR 5P | | | | |
| CNP801 | *1-564-003-00 | PIN, CONNECTOR 4P | | | | |
| D002 | 8-719-801-67 | DIODE DLS1585 | | | | |
| D101 | 8-719-109-97 | DIODE RD6.8ESB2 | | | | |
| D201 | 8-719-946-77 | DIODE AA1101P | | | | |
| D202 | 8-719-946-77 | DIODE AA1101P | | | | |
| D203 | 8-719-946-77 | DIODE AA1101P | | | | |
| D204 | 8-719-946-77 | DIODE AA1101P | | | | |
| D205 | 8-719-946-78 | DIODE VR1101P | | | | |
| D401 | 8-719-100-03 | DIODE 1S2835 | | | | |
| D601 | 8-719-109-51 | DIODE RD2.0ES-B2 | | | | |
| D602 | 8-719-801-67 | DIODE DLS1585 | | | | |
| D604 | 8-719-106-23 | DIODE RD7.5M-B2 | | | | |
| D605 | 8-719-945-59 | DIODE DSA3A4 | | | | |

REVISED

ELECTRICAL PARTS

| Ref.No. | Part No. | Description | | | |
|---------|--------------|---------------------------|-------|----|-------|
| D606 | 8-719-801-67 | DIODE DLS1585 | | | |
| D651 | 8-719-106-54 | DIODE RD10M-B3 | | | |
| D901 | 8-719-109-93 | DIODE RD6.2ES-B2 | | | |
| D902 | 8-719-109-97 | DIODE RD6.8ES-B2 | | | |
| D903 | 8-719-110-17 | DIODE RD10ES-B2 | | | |
| D904 | 8-719-100-03 | DIODE 1S2835 | | | |
| F901 | 1-532-419-11 | FUSE (3.15 A) | | | |
| F902 | 1-532-360-XX | FUSE (1A) | | | |
| F903 | 1-532-360-XX | FUSE (1A) | | | |
| HP101 | 1-543-413-11 | HEAD, MAGNETIC (PLAYBACK) | | | |
| IC101 | 8-759-105-60 | IC UPC1228HA | | | |
| IC301 | 8-759-105-48 | IC UPC1284G | | | |
| IC401 | 8-759-941-15 | IC MB88201-550K | | | |
| IC402 | 8-759-905-47 | IC BA338 | | | |
| IC601 | 8-759-941-14 | IC MB88202-549M | | | |
| IC651 | 8-759-600-24 | IC M54543L | | | |
| IC801 | 8-759-140-74 | IC UPC1470H-X | | | |
| JW003 | 1-216-296-00 | METAL GLAZE | 0 | 5% | 1/8W |
| JW004 | 1-216-296-00 | METAL GLAZE | 0 | 5% | 1/8W |
| JW104 | 1-216-296-00 | METAL GLAZE | 0 | 5% | 1/8W |
| JW105 | 1-216-295-00 | METAL GLAZE | 0 | 5% | 1/10W |
| JW301 | 1-249-997-11 | CARBON MELF | 0 | 5% | 1/8W |
| JW302 | 1-249-997-11 | CARBON MELF | 0 | 5% | 1/8W |
| JW303 | 1-249-997-11 | CARBON MELF | 0 | 5% | 1/8W |
| JW304 | 1-216-296-00 | METAL GLAZE | 0 | 5% | 1/8W |
| JW305 | 1-216-296-00 | METAL GLAZE | 0 | 5% | 1/8W |
| JW306 | 1-216-296-00 | METAL GLAZE | 0 | 5% | 1/8W |
| JW404 | 1-216-295-00 | METAL GLAZE | 0 | 5% | 1/10W |
| JW405 | 1-216-295-00 | METAL GLAZE | 0 | 5% | 1/10W |
| JW406 | 1-216-295-00 | METAL GLAZE | 0 | 5% | 1/10W |
| JW407 | 1-216-296-00 | METAL GLAZE | 0 | 5% | 1/8W |
| JW408 | 1-216-296-00 | METAL GLAZE | 0 | 5% | 1/8W |
| JW409 | 1-216-295-00 | METAL GLAZE | 0 | 5% | 1/10W |
| JW604 | 1-216-296-00 | METAL GLAZE | 0 | 5% | 1/8W |
| JW605 | 1-216-296-00 | METAL GLAZE | 0 | 5% | 1/8W |
| JW652 | 1-216-296-00 | METAL GLAZE | 0 | 5% | 1/8W |
| JW903 | 1-216-295-00 | METAL GLAZE | 0 | 5% | 1/10W |
| JW905 | 1-216-295-00 | METAL GLAZE | 0 | 5% | 1/10W |
| L801 | 1-410-814-11 | INDUCTOR | 3.3UH | | |
| L901 | 1-410-838-11 | INDUCTOR | 330UH | | |
| L902 | 1-410-838-11 | INDUCTOR | 330UH | | |
| M651 | X-3339-906-1 | MOTOR ASSY (LOADING) | | | |
| M801 | 3-391-672-01 | MOTOR ASSY (CAPSTAN) | | | |
| PL201 | 1-518-626-11 | LAMP, PILOT | | | |
| PL202 | 1-518-626-11 | LAMP, PILOT | | | |
| PL401 | 1-518-604-11 | LAMP, PILOT | | | |
| PL701 | 1-518-626-11 | LAMP, PILOT | | | |
| PM401 | 1-454-359-00 | SOLENOID, PLUNGER | | | |
| Q205 | 8-729-901-00 | TRANSISTOR DTC124EK | | | |
| Q301 | 8-729-100-67 | TRANSISTOR 2SC1623-L7 | | | |
| Q302 | 8-729-100-67 | TRANSISTOR 2SC1623-L7 | | | |
| Q351 | 8-729-100-67 | TRANSISTOR 2SC1623-L7 | | | |
| Q352 | 8-729-100-67 | TRANSISTOR 2SC1623-L7 | | | |
| Q371 | 8-729-901-00 | TRANSISTOR DTC124EK | | | |
| Q401 | 8-729-901-00 | TRANSISTOR DTC124EK | | | |
| Q405 | 8-729-101-07 | TRANSISTOR 2S8798 | | | |
| Q406 | 8-729-100-67 | TRANSISTOR 2SC1623-L7 | | | |
| Q501 | 8-729-100-67 | TRANSISTOR 2SC1623-L7 | | | |
| Q551 | 8-729-100-67 | TRANSISTOR 2SC1623-L7 | | | |
| Q601 | 8-729-901-00 | TRANSISTOR DTC124EK | | | |

ELECTRICAL PARTS

| Ref.No. | Part No. | Description | | | |
|---------|--------------|-----------------------|------|----|-------|
| Q602 | 8-729-901-00 | TRANSISTOR DTC124EK | | | |
| Q603 | 8-729-116-42 | TRANSISTOR 2SD1164 | | | |
| Q604 | 8-729-901-00 | TRANSISTOR DTC124EK | | | |
| Q605 | 8-729-100-67 | TRANSISTOR 2SC1623-L7 | | | |
| Q606 | 8-729-901-00 | TRANSISTOR DTC124EK | | | |
| Q607 | 8-729-901-00 | TRANSISTOR DTC124EK | | | |
| Q608 | 8-729-901-00 | TRANSISTOR DTC124EK | | | |
| Q609 | 8-729-901-00 | TRANSISTOR DTC124EK | | | |
| Q610 | 8-729-901-01 | TRANSISTOR DTC144EK | | | |
| Q611 | 8-729-901-05 | TRANSISTOR DTA124EK | | | |
| Q612 | 8-729-100-67 | TRANSISTOR 2SC1623-L7 | | | |
| Q613 | 8-729-100-67 | TRANSISTOR 2SC1623-L7 | | | |
| Q614 | 8-729-901-05 | TRANSISTOR DTA124EK | | | |
| Q615 | 8-729-901-05 | TRANSISTOR DTA124EK | | | |
| Q651 | 8-729-901-05 | TRANSISTOR DTA124EK | | | |
| Q652 | 8-729-188-23 | TRANSISTOR 2SD882 | | | |
| Q653 | 8-729-100-67 | TRANSISTOR 2SC1623-L7 | | | |
| Q901 | 8-729-188-23 | TRANSISTOR 2SD882 | | | |
| Q902 | 8-729-901-47 | TRANSISTOR DTA143EK | | | |
| Q903 | 8-729-100-67 | TRANSISTOR 2SC1623-L7 | | | |
| Q904 | 8-729-177-43 | TRANSISTOR 2SD774 | | | |
| Q905 | 8-729-901-00 | TRANSISTOR DTC124EK | | | |
| R001 | 1-216-083-00 | METAL GLAZE | 27K | 5% | 1/10W |
| R101 | 1-216-027-00 | METAL GLAZE | 120 | 5% | 1/10W |
| R102 | 1-216-071-00 | METAL GLAZE | 8.2K | 5% | 1/10W |
| R103 | 1-216-105-00 | METAL GLAZE | 220K | 5% | 1/10W |
| R104 | 1-216-025-00 | METAL GLAZE | 100 | 5% | 1/10W |
| R151 | 1-216-027-00 | METAL GLAZE | 120 | 5% | 1/10W |
| R152 | 1-216-071-00 | METAL GLAZE | 8.2K | 5% | 1/10W |
| R153 | 1-216-105-00 | METAL GLAZE | 220K | 5% | 1/10W |
| R201 | 1-216-035-00 | METAL GLAZE | 270 | 5% | 1/10W |
| R202 | 1-216-035-00 | METAL GLAZE | 270 | 5% | 1/10W |
| R203 | 1-216-035-00 | METAL GLAZE | 270 | 5% | 1/10W |
| R204 | 1-216-035-00 | METAL GLAZE | 270 | 5% | 1/10W |
| R205 | 1-216-035-00 | METAL GLAZE | 270 | 5% | 1/10W |
| R206 | 1-216-057-00 | METAL GLAZE | 2.2K | 5% | 1/10W |
| R301 | 1-249-349-11 | CARBON MELF | 15K | 5% | 1/8W |
| R302 | 1-216-043-00 | CARBON MELF | 560 | 5% | 1/8W |
| R303 | 1-249-353-11 | CARBON MELF | 33K | 5% | 1/8W |
| R304 | 1-249-338-00 | CARBON MELF | 1.8K | 5% | 1/8W |
| R305 | 1-249-345-11 | CARBON MELF | 6.8K | 5% | 1/8W |
| R306 | 1-249-341-11 | CARBON MELF | 3.3K | 5% | 1/8W |
| R307 | 1-249-355-11 | CARBON MELF | 47K | 5% | 1/8W |
| R308 | 1-216-116-00 | METAL GLAZE | 620K | 5% | 1/10W |
| R309 | 1-249-362-11 | CARBON MELF | 180K | 5% | 1/8W |
| R351 | 1-249-349-11 | CARBON MELF | 15K | 5% | 1/8W |
| R352 | 1-216-043-00 | CARBON MELF | 560 | 5% | 1/8W |
| R353 | 1-249-353-11 | CARBON MELF | 33K | 5% | 1/8W |
| R354 | 1-249-338-11 | CARBON MELF | 1.8K | 5% | 1/8W |
| R355 | 1-249-345-11 | CARBON MELF | 6.8K | 5% | 1/8W |
| R356 | 1-249-341-11 | CARBON MELF | 3.3K | 5% | 1/8W |
| R357 | 1-249-355-11 | CARBON MELF | 47K | 5% | 1/8W |
| R358 | 1-216-116-00 | METAL GLAZE | 620K | 5% | 1/10W |
| R359 | 1-249-362-11 | CARBON MELF | 180K | 5% | 1/8W |
| R371 | 1-249-353-11 | CARBON MELF | 33K | 5% | 1/8W |
| R372 | 1-249-339-11 | CARBON MELF | 2.2K | 5% | 1/8W |
| R375 | 1-249-345-11 | CARBON MELF | 6.8K | 5% | 1/8W |
| R401 | 1-216-073-00 | METAL GLAZE | 10K | 5% | 1/10W |

ELECTRICAL PARTS

| Ref.No. | Part No. | Description | | | | |
|---------|--------------|-------------|------|----|--------|--|
| R402 | 1-216-091-00 | METAL GLAZE | 56K | 5% | 1/10W | |
| R403 | 1-216-071-00 | METAL GLAZE | 8.2K | 5% | 1/10W | |
| R405 | 1-216-073-00 | METAL GLAZE | 10K | 5% | 1/10W | |
| R406 | 1-216-055-00 | METAL GLAZE | 1.8K | 5% | 1/10W | |
| R407 | 1-216-049-00 | METAL GLAZE | 1K | 5% | 1/10W | |
| R408 | 1-216-046-00 | METAL GLAZE | 1.5K | 5% | 1/10W | |
| R409 | 1-216-073-00 | METAL GLAZE | 10K | 5% | 1/10W | |
| R410 | 1-216-073-00 | METAL GLAZE | 10K | 5% | 1/10W | |
| R411 | 1-216-073-00 | METAL GLAZE | 10K | 5% | 1/10W | |
| R412 | 1-216-073-00 | METAL GLAZE | 10K | 5% | 1/10W | |
| R450 | 1-216-073-00 | METAL GLAZE | 10K | 5% | 1/10W | |
| R501 | 1-249-336-11 | CARBON MELF | 1.2K | 5% | 1/8W | |
| R502 | 1-249-350-11 | CARBON MELF | 18K | 5% | 1/8W | |
| R503 | 1-249-333-11 | CARBON MELF | 680 | 5% | 1/8W | |
| R504 | 1-249-335-11 | CARBON MELF | 1K | 5% | 1/8W | |
| R551 | 1-249-336-11 | CARBON MELF | 1.2K | 5% | 1/8W | |
| R552 | 1-249-350-11 | CARBON MELF | 18K | 5% | 1/8W | |
| R553 | 1-249-333-11 | CARBON MELF | 680 | 5% | 1/8W | |
| R554 | 1-249-335-11 | CARBON MELF | 1K | 5% | 1/8W | |
| R601 | 1-247-743-11 | CARBON | 220 | 5% | 1/2W | |
| R602 | 1-247-735-11 | CARBON | 47 | 5% | 1/2W | |
| R604 | 1-216-073-00 | METAL GLAZE | 10K | 5% | 1/10W | |
| R605 | 1-216-081-00 | METAL GLAZE | 22K | 5% | 1/10W | |
| R606 | 1-216-089-00 | METAL GLAZE | 47K | 5% | 1/10W | |
| R607 | 1-216-067-00 | METAL GLAZE | 5.6K | 5% | 1/10W | |
| R608 | 1-216-174-00 | METAL GLAZE | 100 | 5% | 1/8W | |
| R609 | 1-216-073-00 | METAL GLAZE | 10K | 5% | 1/10W | |
| R610 | 1-216-073-00 | METAL GLAZE | 10K | 5% | 1/10W | |
| R611 | 1-216-073-00 | METAL GLAZE | 10K | 5% | 1/10W | |
| R612 | 1-216-081-00 | METAL GLAZE | 22K | 5% | 1/10W | |
| R613 | 1-216-073-00 | METAL GLAZE | 10K | 5% | 1/10W | |
| R614 | 1-216-073-00 | METAL GLAZE | 10K | 5% | 1/10W | |
| R615 | 1-216-053-00 | METAL GLAZE | 1.5K | 5% | 1/10W | |
| R616 | 1-216-071-00 | METAL GLAZE | 8.2K | 5% | 1/10W | |
| R651 | 1-216-186-00 | METAL GLAZE | 330 | 5% | 1/8W | |
| R652 | 1-216-081-00 | METAL GLAZE | 22K | 5% | 1/10W | |
| R653 | 1-216-081-00 | METAL GLAZE | 22K | 5% | 1/10W | |
| R654 | 1-249-478-11 | CARBON | 2.2 | 5% | 1/2W F | |
| R701 | 1-216-053-00 | METAL GLAZE | 1.5K | 5% | 1/10W | |
| R702 | 1-216-053-00 | METAL GLAZE | 1.5K | 5% | 1/10W | |
| R703 | 1-216-057-00 | METAL GLAZE | 2.2K | 5% | 1/10W | |
| R801 | 1-216-044-00 | METAL GLAZE | 620 | 5% | 1/10W | |
| R802 | 1-216-032-00 | METAL GLAZE | 200 | 5% | 1/10W | |
| R803 | 1-216-059-00 | METAL GLAZE | 2.7K | 5% | 1/10W | |
| R805 | 1-216-031-00 | METAL GLAZE | 180 | 5% | 1/10W | |
| R901 | 1-216-047-00 | METAL GLAZE | 820 | 5% | 1/10W | |
| R904 | 1-216-053-00 | METAL GLAZE | 1.5K | 5% | 1/10W | |
| R905 | 1-216-071-00 | METAL GLAZE | 8.2K | 5% | 1/10W | |
| R906 | 1-216-043-00 | METAL GLAZE | 560 | 5% | 1/10W | |
| R907 | 1-216-001-00 | METAL GLAZE | 10 | 5% | 1/10W | |
| R908 | 1-216-049-00 | METAL GLAZE | 1K | 5% | 1/10W | |
| R998 | 1-216-216-00 | METAL GLAZE | 5.6K | 5% | 1/8W | |
| R999 | 1-216-073-00 | METAL GLAZE | 10K | 5% | 1/10W | |

ELECTRICAL PARTS

| Ref.No. | Part No. | Description |
|---------|--------------|-------------------------------------|
| RV301 | 1-230-524-11 | RES, ADJ, METAL GLAZE 22K |
| RV351 | 1-230-524-11 | RES, ADJ, METAL GLAZE 22K |
| RV801 | 1-230-329-11 | RES, ADJ, CARBON 470 (SPEED ADJ) |
| SW101 | 1-571-002-11 | SWITCH, SLIDE |
| SW201 | 1-571-004-11 | SWITCH, PUSH (1 KEY)(PLAY SENSE) |
| SW202 | 1-571-003-11 | SWITCH, LEAF (MUTING) |
| SW203 | 1-554-024-00 | SWITCH, LEAF (FF SENSE){▶▶} |
| SW204 | 1-554-024-00 | SWITCH, LEAF (REW SENSE){◀◀} |
| SW301 | 1-571-002-11 | SWITCH, SLIDE (METAL) |
| SW401 | 1-570-953-11 | SWITCH, PUSH (1 KEY)(TAPE SENSE) |
| SW402 | 1-571-004-11 | SWITCH, PUSH (1 KEY)(FR MUTING) |
| SW601 | 1-553-226-00 | SWITCH, LEAF (OPENED SENSE) |
| SW651 | 1-553-226-00 | SWITCH, LEAF (CLOSED SENSE) |
| SW701 | 1-554-937-11 | SWITCH, KEY BOARD (STOP){■} |
| SW702 | 1-554-937-11 | SWITCH, KEY BOARD (PLAY){▶} |
| SW703 | 1-571-005-11 | SWITCH, PUSH (1 KEY){DOLBY NR} |
| SW704 | 1-571-005-11 | SWITCH, PUSH (1 KEY){AMS} |
| SW801 | 1-570-953-11 | SWITCH, PUSH (1 KEY){OPEN/CLOSE}{▲} |
| TH801 | 1-807-762-11 | THERMISTOR, POSITIVE (1.5K 3600RPM) |

ACCESSORY & PACKING MATERIAL

| Part No. | Description |
|---------------|---------------------------------|
| 3-310-655-01 | SUPPORT (ND), FITTING |
| 3-315-736-21 | BRACKET, NEW D |
| 3-320-636-01 | BAG (C), PROTECTION |
| 3-339-927-01 | SPACER |
| 3-339-994-01 | INDIVIDUAL CARTON |
| 3-339-941-01 | CUSHION (F&R) |
| *3-342-438-01 | CASE, RECEIVE |
| 3-701-613-01 | BAG, POLYETHYLENE |
| 3-701-628-00 | BAG, POLYETHYLENE |
| 3-764-704-11 | {AEP,E}.....FITTING DRAWING |
| 3-764-704-21 | {US,Canadian}...FITTING DRAWING |
| 3-764-704-31 | {Canadian}.....FITTING DRAWING |
| 3-764-704-41 | {AEP,E}.....FITTING DRAWING |
| 3-769-393-11 | MANUAL, INSTRUCTION |
| 3-769-393-41 | {AEP,E}...MANUAL, INSTRUCTION |
| 3-795-515-30 | {Canadian}...CARD, WARRANTY |
| 7-682-261-09 | SCREW +K 4X8 |
| X-3315-702-1 | SCREW ASSY (25MM), FITTING |

XK-8D

SONY® SERVICE MANUAL

*US Model
Canadian Model
AEP Model
E Model*

SUPPLEMENT-1

File this supplement with the service manual.

Subject:

**Following parts can be supplied
for replacement.**

1. The patterns of several mounted boards have been modified.

Mounted boards which have been modified.

- GABANA board
- Micro computer board
- Dolby board
- PS board
- Main board
- Motor board
- SW R board
- SW L board

2. The REG board has been discontinued.

The REG circuit has been built into the motor board.

1. SECTION 4 EXPLODED VIEWS (Service Manual pages 17, 18.)

 : added portion

NOTE:

The mechanical parts with no reference number in the exploded views are not supplied.

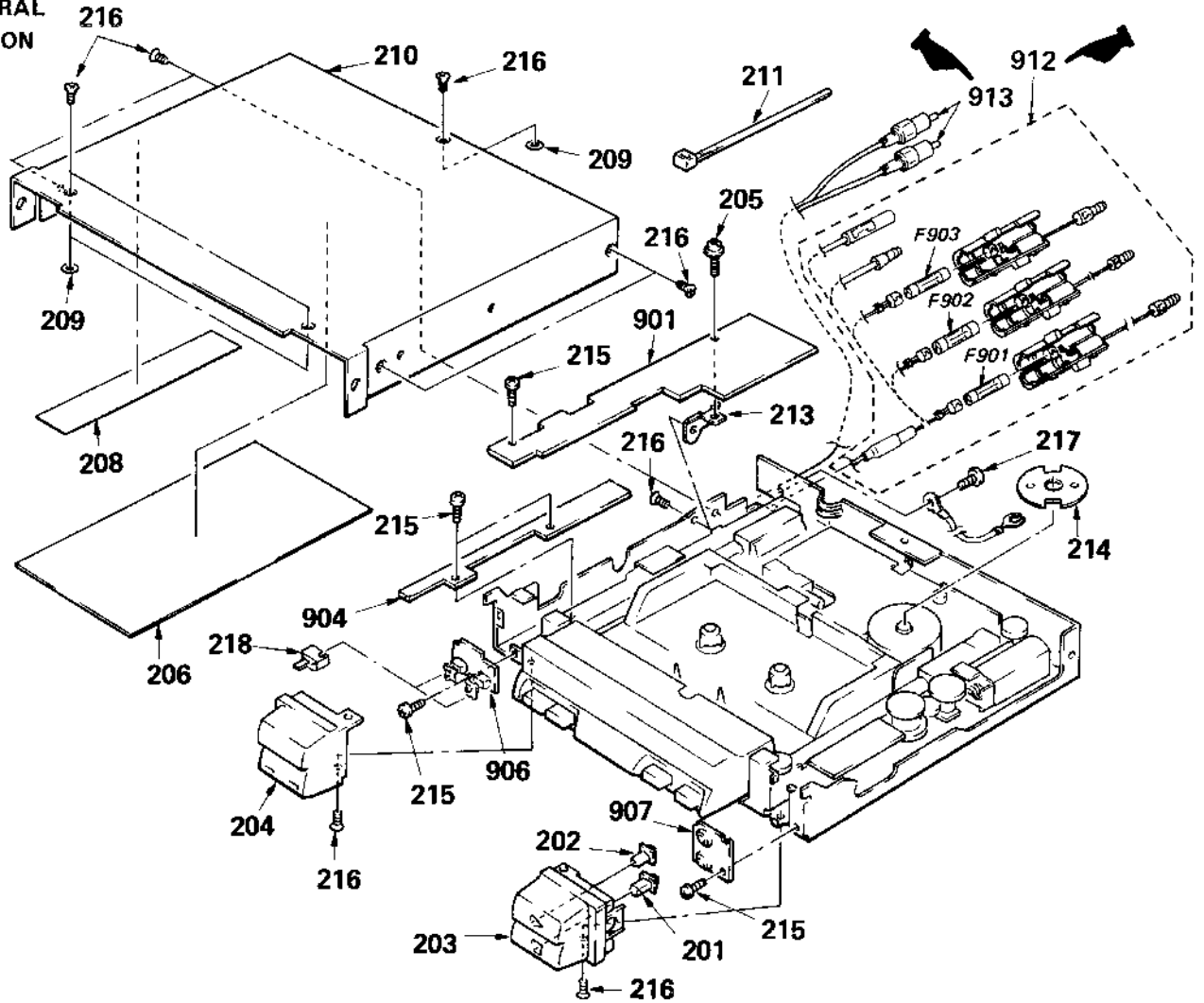
The construction parts of an assembled part are indicated with a collation number in the remark column.

Color Indication of Appearance Parts
Example: (RED) KNOB, BALANCE (WHITE)

Items marked " * " are not stocked since they are seldom required for routine service. Some delay should be anticipated when ordering these items.

Cabinet's Color Parts' Color

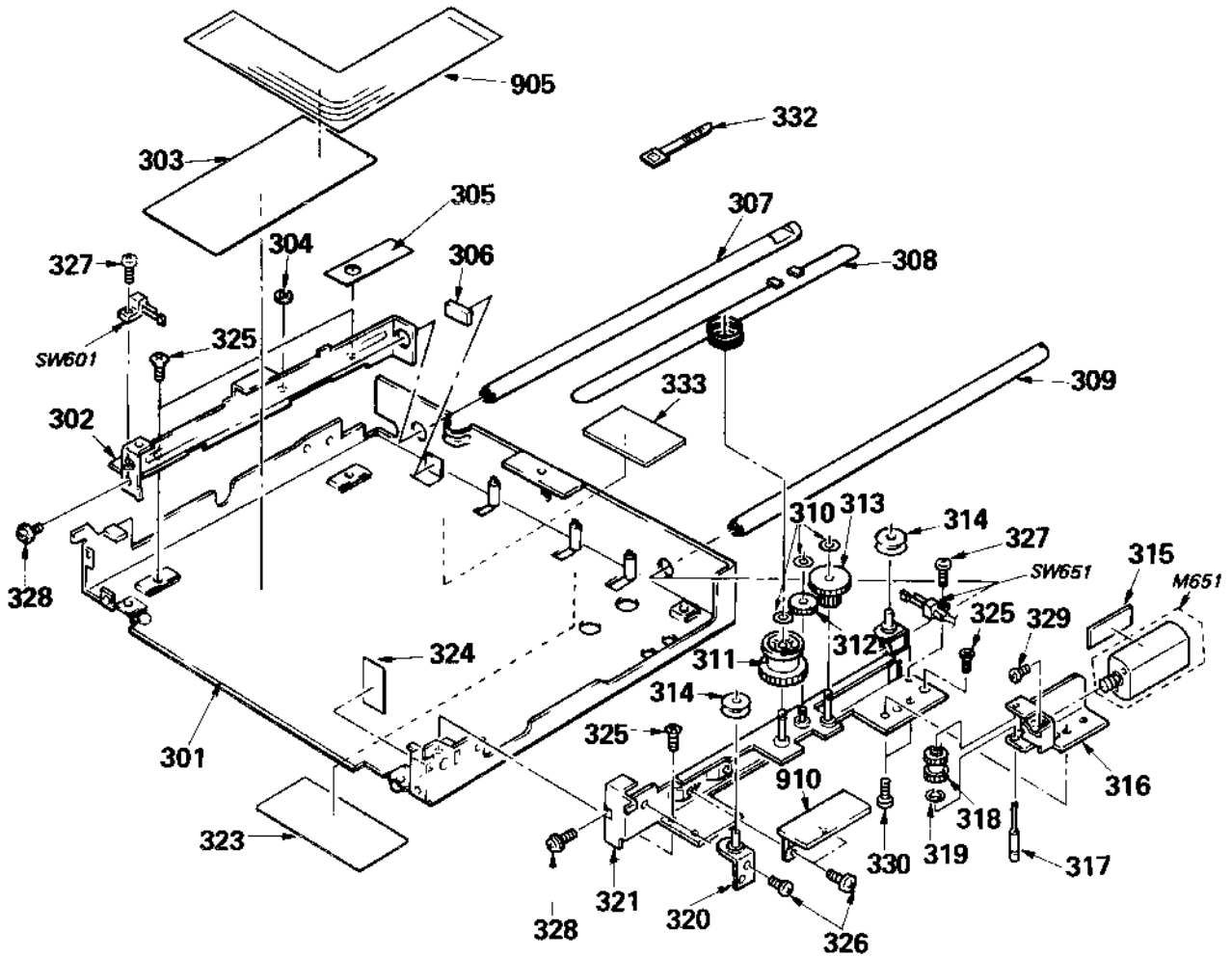
(1) GENERAL SECTION



| No. | Part No. | Description | Remarks |
|-----|---------------|---------------------|---------|
| 201 | 3-339-945-01 | BUTTON, STOP | |
| 202 | 3-339-944-01 | BUTTON, PLAY | |
| 203 | 3-339-972-01 | PIECE (RIGHT), NOSE | |
| 204 | 3-339-983-11 | PIECE (LEFT), NOSE | |
| 205 | 7-621-255-35 | SCREW, LOCK | |
| 206 | *3-342-439-02 | PLATE, SHIELD | |
| 208 | *3-342-434-02 | SHEET (J) | |
| 209 | 3-342-428-01 | WASHER | |
| 210 | *3-339-987-02 | LID, UPPER | |
| 211 | *3-671-893-00 | CLAMP (LOW TYPE) | |
| 213 | *3-342-404-03 | HOLDER, PC BOARD | |
| 214 | *3-342-423-01 | SHIELD PLATE, MOTOR | |

| No. | Part No. | Description | Remarks |
|------|---------------|-----------------------------|---------|
| 215 | 7-621-255-55 | SCREW +P 2X8 | |
| 216 | 7-627-454-08 | SCREW, PRECISION +K 2.6X3.5 | |
| 217 | 7-682-544-09 | SCREW +B 3X3 | |
| 218 | 3-339-971-01 | BUTTON, AMS | |
| 901 | | PC BOARD ASSY, MAIN | |
| 904 | | MOUNTED PCB, PS | |
| 906 | *1-624-924-11 | PC BOARD, SW (L) | |
| 907 | *1-624-923-11 | PC BOARD, SW (R) | |
| 912 | 1-559-424-14 | CORD (WITH CONNECTOR) | |
| 913 | 1-559-539-11 | CORD (WITH PLUG) | |
| F901 | 1-532-419-11 | FUSE (3.15 A) | |
| F902 | 1-532-360-XX | FUSE (1 A) | |
| F903 | 1-532-360-XX | FUSE (1 A) | |

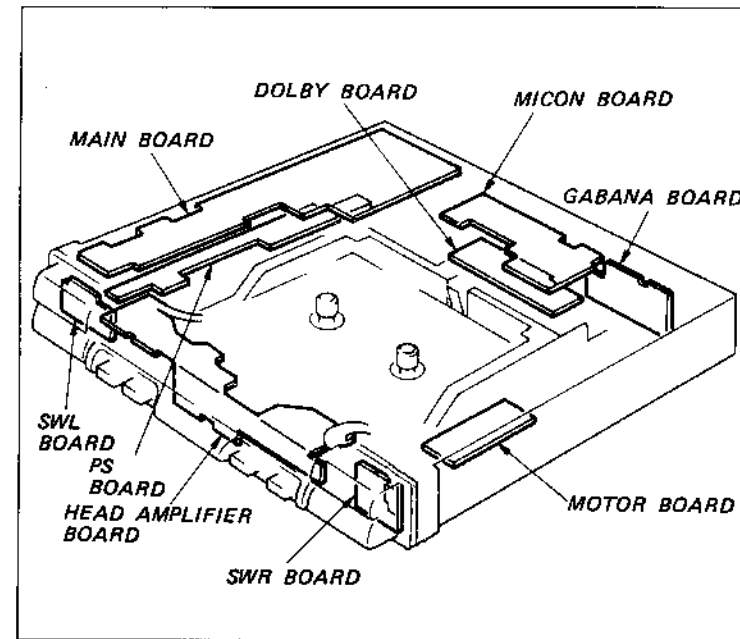
(2) LOWER CASE SECTION



| No. | Part No. | Description | Remarks | No. | Part No. | Description | Remarks |
|-----|---------------|----------------------------|---------|-------|---------------|-------------------------------------------|---------|
| 301 | *X-3339-905-3 | CASE ASSY, LOWER | | 321 | *X-3339-903-4 | BRACKET (RIGHT) ASSY, SHAFT | |
| 302 | *X-3339-904-1 | BRACKET (LEFT) ASSY, SHAFT | | 323 | *3-342-401-01 | (US, AEP, E)... LABEL, MODEL NUMBER (EXP) | |
| 303 | *3-342-429-01 | COVER, SHEET | | | *3-342-402-01 | (Canadian) ... LABEL, MODEL NUMBER | |
| 304 | 3-342-428-01 | WASHER | | 324 | *3-342-416-01 | SHEET (F), INSULATING | |
| 305 | *3-342-417-01 | SHEET (G), INSULATING | | 325 | 7-627-454-08 | SCREW, PRECISION +K 2.6X3.5 | |
| 306 | 9-911-840-XX | CUSHION (A) | | 326 | 7-621-773-93 | SCREW +B 2.6X3 | |
| 307 | *3-339-966-13 | SHAFT, SLIDE | | 327 | 7-627-850-28 | SCREW, PRECISION +P 1.4X3 | |
| 308 | 3-342-419-01 | ROPE, WIRE | | 328 | 3-703-502-31 | SCREW, PRECISION +W 1.4X3 | |
| 309 | *3-339-966-02 | SHAFT, SLIDE | | 329 | 7-627-553-17 | PRECISION SCREW +P 2X2 TYPE 3 | |
| 310 | 3-312-434-00 | WASHER, SLIT | | 330 | 7-682-544-04 | SCREW +B 3X3 | |
| 311 | 4-913-251-01 | GEAR (C), DRIVING | | 332 | *3-655-653-11 | BAND (TAITON), BINDING | |
| 312 | 3-339-964-01 | GEAR (B) | | 333 | 3-305-239-00 | LABEL, DOLBY | |
| 313 | 3-339-950-01 | GEAR (A) | | 905 | 1-622-171-12 | PC BOARD, CONNECTOR (C) | |
| 314 | 3-817-114-11 | PULLEY PB | | 910 | *1-624-922-11 | PC BOARD, MOTOR | |
| 315 | *4-826-732-01 | CUSHION (MOTOR) | | M651 | X-3339-906-1 | MOTOR ASSY (LOADING) | |
| 316 | *3-339-976-01 | BRACKET, MOTOR WHEEL | | SW601 | 31-553-226-00 | SWITCH, LEAF (OPENED SENSE) | |
| 317 | 3-339-952-01 | SHAFT, DRIVING WHEEL | | SW651 | 31-553-226-00 | SWITCH, LEAF (CLOSED SENSE) | |
| 318 | 3-339-965-01 | WHEEL, DRIVING | | | | | |
| 319 | 7-624-104-04 | STOP RING 2.0, TYPE -E | | | | | |
| 320 | *X-3339-902-3 | BRACKET ASSY, PULLEY | | | | | |

3. PRINTED WIRING BOARDS (Service Manual Pages 8-10.)

CIRCUIT BOARDS LOCATION

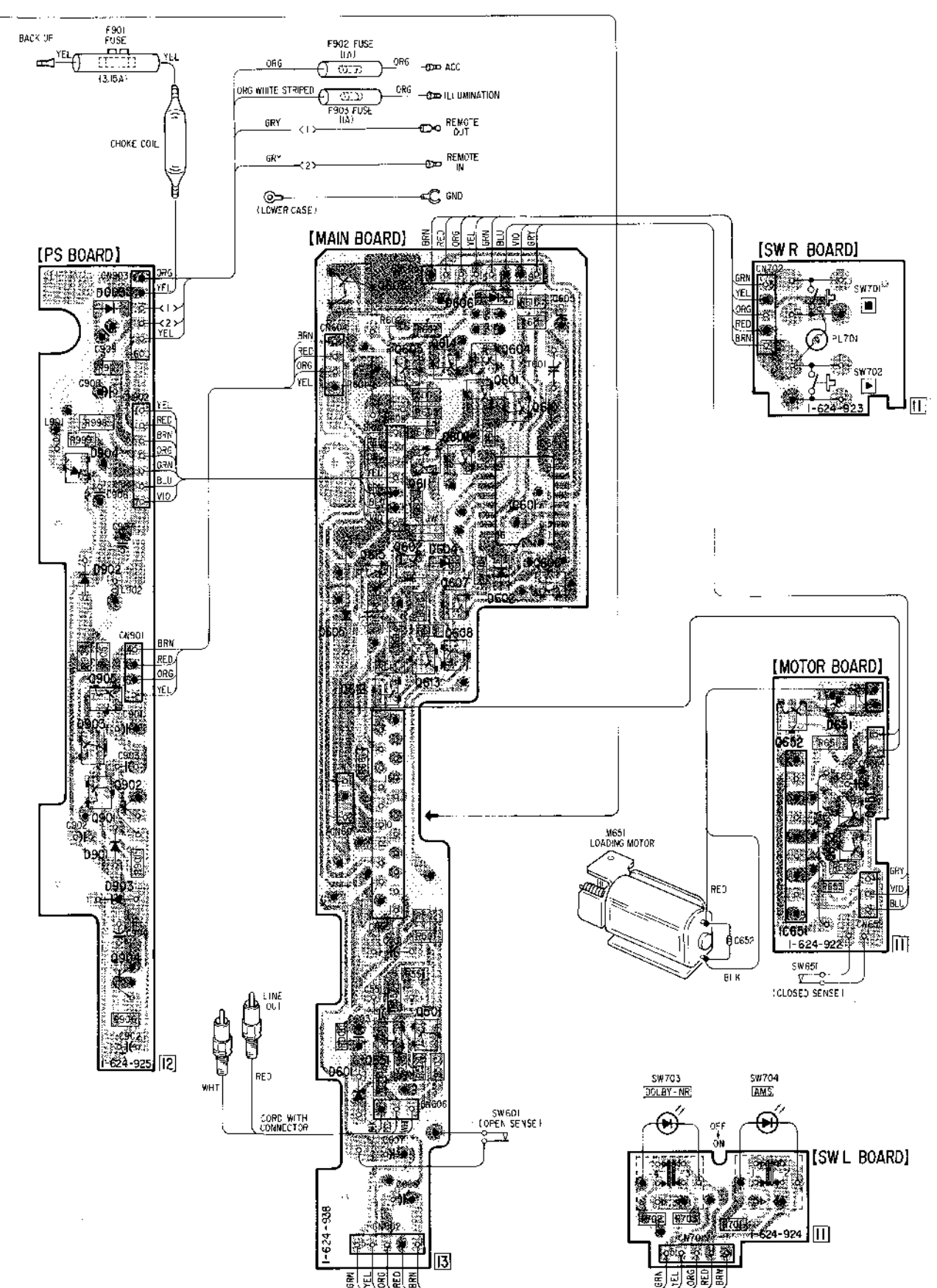
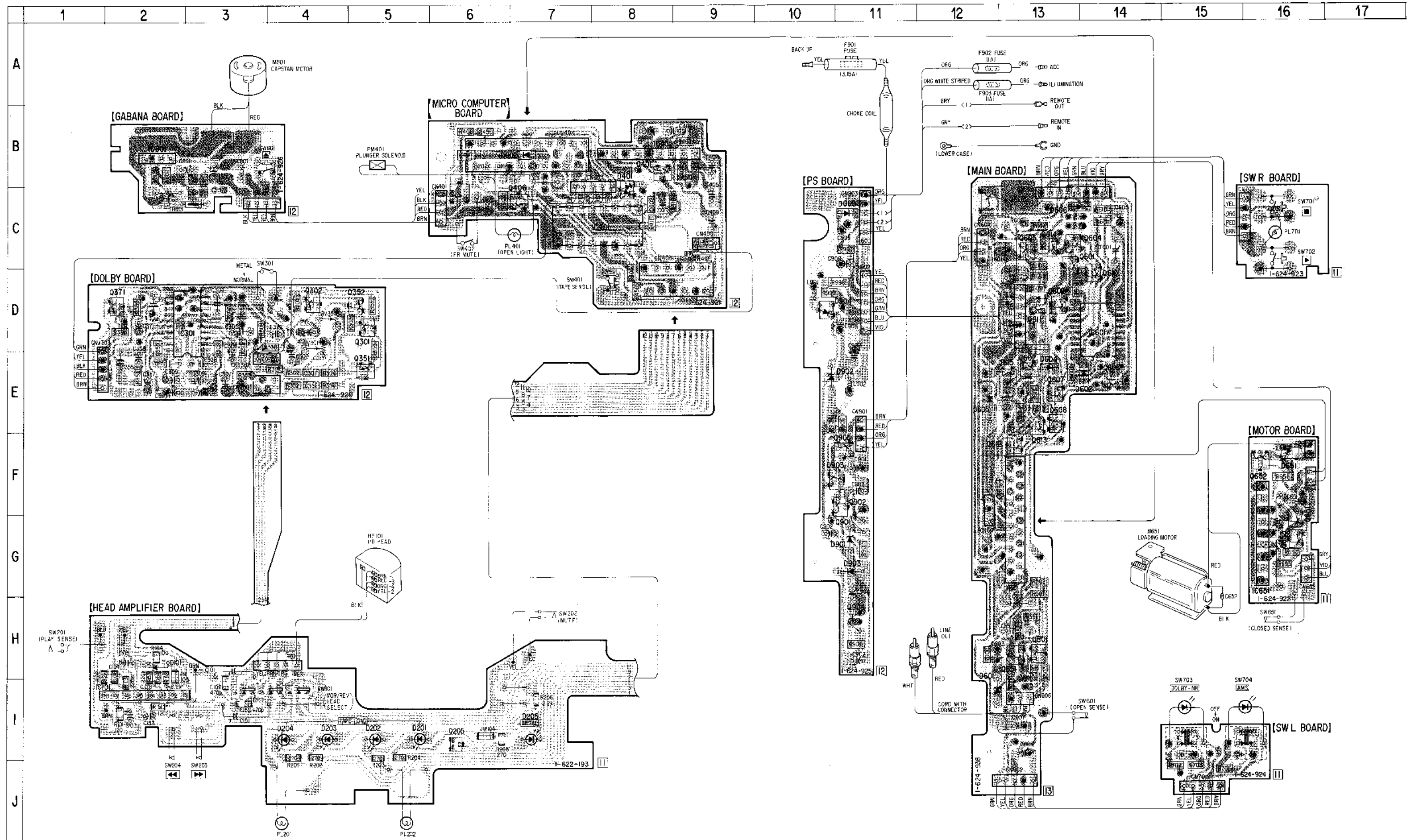


• Semiconductor Location

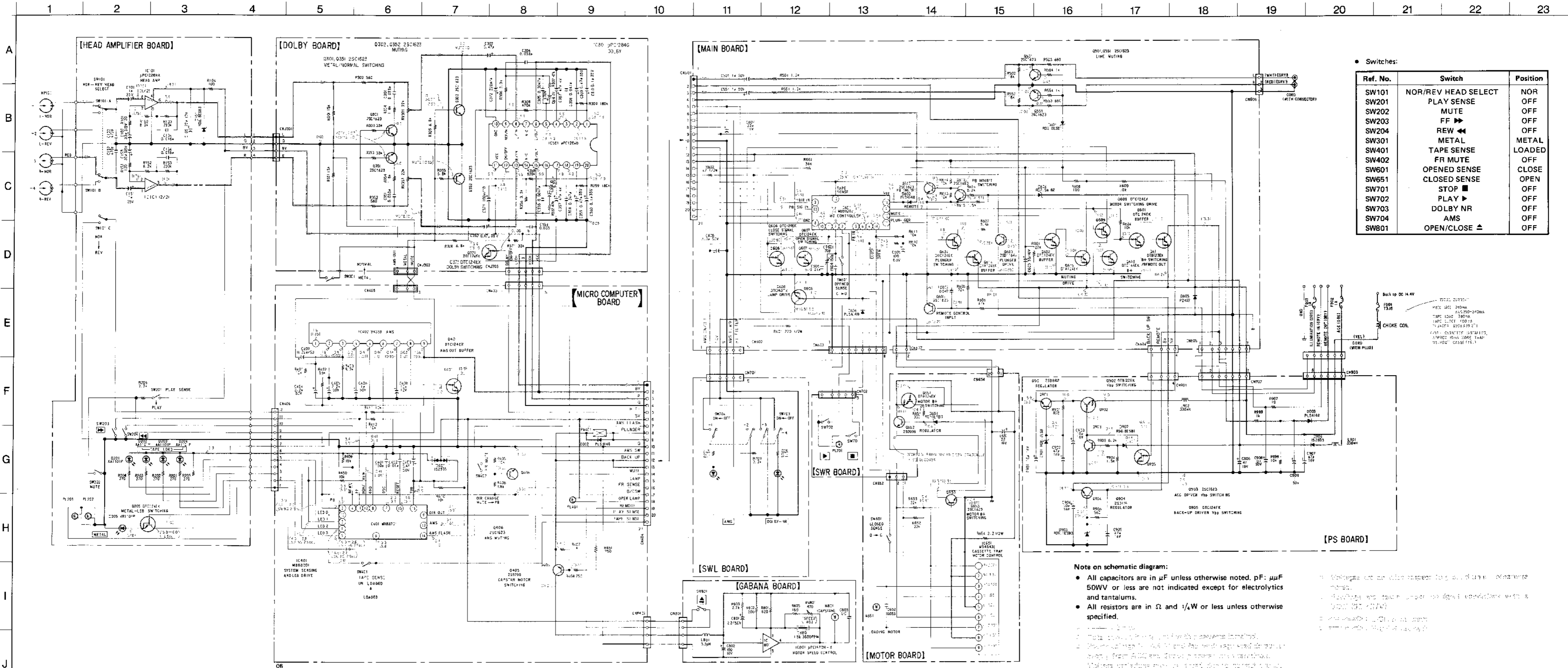
| Ref. No. | Location | Ref. No. | Location | Ref. No. | Location |
|----------|----------|----------|----------|----------|----------|
| D002 | B-7 | IC301 | D-2 | Q603 | C-13 |
| D003 | C-11 | IC401 | C-8 | Q604 | C-13 |
| D101 | H-2 | IC402 | B-8 | Q605 | C-13 |
| D201 | I-5 | IC601 | D-14 | Q606 | E-14 |
| D202 | I-5 | IC651 | G-16 | Q607 | E-13 |
| D203 | I-4 | IC801 | B-2 | Q608 | E-13 |
| D204 | I-4 | | | Q609 | D-13 |
| D205 | I-7 | Q205 | I-6 | Q610 | D-14 |
| D401 | B-8 | Q301 | D-5 | Q611 | D-13 |
| D601 | I-12 | Q302 | D-4 | Q612 | F-13 |
| D602 | E-14 | Q351 | E-5 | Q613 | E-13 |
| D604 | E-13 | Q352 | D-5 | Q614 | C-13 |
| D605 | E-12 | Q371 | D-2 | Q615 | E-13 |
| Q606 | C-13 | Q401 | C-8 | Q651 | G-16 |
| Q651 | F-16 | Q405 | C-6 | Q652 | F-16 |
| Q901 | G-11 | Q406 | C-7 | Q653 | G-16 |
| Q902 | E-10 | Q501 | H-13 | Q901 | G-11 |
| Q903 | G-11 | Q551 | H-13 | Q902 | F-11 |
| Q904 | D-10 | Q601 | C-13 | Q903 | F-11 |
| IC101 | I-2 | Q602 | E-13 | Q904 | M-11 |
| | | | | Q905 | F-11 |

Note on printed wiring boards:

- : parts extracted from the component side.
- : parts extracted from the conductor side.
- : indicates side identified with part number.
- ⊗ : Through hole.



4. SCHEMATIC DIAGRAM (Service Manual Pages 11-13.)



5. SECTION 5 ELECTRICAL PARTS LIST (Service Manual Pages 22-24.)

NOTE:

• Items marked "★" are not stocked since they are seldom required for routine service. Some delay should be anticipated when ordering these items.

• If there are two or more same circuits in a set such as a stereophonic machine, only typical circuit parts may be indicated and capacitors and resistors in other same circuits may be omitted.

CAPACITORS:

MF:µF, PF:µµF.

RESISTORS

• All resistors are in ohms.

• F : nonflammable

COILS

• MMH : mH, UH : µH

SEMICONDUCTORS

In each case, U : µ, for example:

UA.... : µA..., UPA.... : µPA..., UPC.... : µPC,

UPD.... : µPD....

ELECTRICAL PARTS

| Ref.No. | Part No. | Description | | | |
|---------|---------------|-----------------------------|-----|-------|--|
| 901 | | PC BOARD ASSY, MAIN | | | |
| 902 | | MOUNTED PCB, MICRO COMPUTER | | | |
| 903 | | MOUNTED PCB, HEAD AMPLIFIER | | | |
| 904 | | MOUNTED PCB, PS | | | |
| 905 | 1-622-171-13 | PC BOARD, CONNECTOR (C) | | | |
| 906 | *1-624-924-11 | PC BOARD, SW (L) | | | |
| 907 | *1-624-923-11 | PC BOARD, SW (R) | | | |
| 908 | *1-624-926-12 | PC BOARD, GOVERNOR | | | |
| 909 | | MOUNTED PCB, DOLBY | | | |
| 910 | *1-624-922-11 | PC BOARD, MOTOR | | | |
| 912 | 1-559-424-15 | CORD (WITH CONNECTOR) | | | |
| 913 | 1-559-539-11 | CORD (WITH PLUG) | | | |
| C001 | 1-163-035-00 | CERAMIC CHIP 0.047MF | 10% | 25V | |
| C101 | 1-119-501-00 | ELECT 1MF | 20% | 25V | |
| C102 | 1-163-133-00 | CERAMIC CHIP 470PF | 5% | 50V | |
| C103 | 1-131-386-00 | TANTALUM 33MF | 10% | 3.15V | |
| C104 | 1-163-024-00 | CERAMIC CHIP 0.018MF | 10% | 50V | |
| C105 | 1-124-234-00 | ELECT 22MF | 20% | 10V | |
| C151 | 1-119-501-00 | ELECT 1MF | 20% | 25V | |
| C152 | 1-163-133-00 | CERAMIC CHIP 470PF | 5% | 50V | |
| C153 | 1-131-386-00 | TANTALUM 33MF | 10% | 3.15V | |
| C154 | 1-163-024-00 | CERAMIC CHIP 0.018MF | 10% | 50V | |
| C301 | 1-163-034-00 | CERAMIC CHIP 0.033MF | 50V | | |
| C302 | 1-131-345-00 | TANTALUM 0.47MF | 20% | 35V | |
| C304 | 1-136-491-00 | FILM 0.033MF | 5% | 50V | |
| C305 | 1-130-479-00 | MYLAR 0.0047MF | 5% | 50V | |
| C306 | 1-124-462-00 | ELECT 10MF | 20% | 6.3V | |
| C307 | 1-124-432-00 | ELECT 47MF | 20% | 4V | |
| C308 | 1-136-493-00 | FILM 0.047MF | 5% | 50V | |
| C309 | 1-131-345-00 | TANTALUM 0.47MF | 20% | 35V | |
| C310 | 1-131-341-00 | TANTALUM 0.1MF | 20% | 35V | |
| C351 | 1-163-034-00 | CERAMIC CHIP 0.033MF | 50V | | |
| C352 | 1-131-345-00 | TANTALUM 0.47MF | 20% | 35V | |
| C354 | 1-136-491-00 | FILM 0.033MF | 5% | 50V | |
| C355 | 1-130-479-00 | MYLAR 0.0047MF | 5% | 50V | |
| C356 | 1-124-462-00 | ELECT 10MF | 20% | 6.3V | |
| C357 | 1-124-432-00 | ELECT 47MF | 20% | 4V | |
| C358 | 1-136-493-00 | FILM 0.047MF | 5% | 50V | |
| C359 | 1-131-345-00 | TANTALUM 0.47MF | 20% | 35V | |
| C360 | 1-131-402-00 | TANTALUM 0.1MF | 20% | 35V | |
| C371 | 1-124-584-00 | ELECT 100MF | 20% | 10V | |
| C372 | 1-124-434-00 | ELECT 220MF | 20% | 4V | |
| C401 | 1-163-121-00 | CERAMIC CHIP 150PF | 5% | 50V | |
| C402 | 1-163-021-00 | CERAMIC CHIP 0.01MF | 10% | 50V | |
| C403 | 1-124-465-00 | ELECT 0.47MF | 20% | 50V | |
| C404 | 1-124-257-00 | ELECT 2.2MF | 20% | 50V | |

ELECTRICAL PARTS

| Ref.No. | Part No. | Description | | | |
|---------|---------------|-----------------------|-----|------|--|
| C405 | 1-124-257-00 | ELECT 2.2MF | 20% | 50V | |
| C406 | 1-124-255-00 | ELECT 1MF | 20% | 50V | |
| C408 | 1-124-462-00 | ELECT 10MF | 20% | 10V | |
| C409 | 1-124-464-11 | ELECT 0.22MF | 20% | 50V | |
| C501 | 1-124-255-00 | ELECT 1MF | 20% | 50V | |
| C551 | 1-124-255-00 | ELECT 1MF | 20% | 50V | |
| C603 | 1-124-242-00 | ELECT 33MF | 20% | 16V | |
| C604 | 1-163-121-00 | CERAMIC CHIP 150PF | 5% | 50V | |
| C605 | 1-124-225-11 | ELECT 100MF | 20% | 6.3V | |
| C606 | 1-163-021-00 | CERAMIC CHIP 0.01MF | 10% | 50V | |
| C607 | 1-124-234-00 | ELECT 22MF | 20% | 16V | |
| C608 | 1-124-258-00 | ELECT 3.3MF | 20% | 50V | |
| C651 | 1-124-234-00 | ELECT 22MF | 20% | 16V | |
| C652 | 1-163-034-91 | CAP, CERAMIC 0.033MF | | | |
| C801 | 1-124-257-00 | ELECT 2.2MF | 20% | 50V | |
| C802 | 1-126-101-11 | ELECT 100MF | 20% | 16V | |
| C803 | 1-163-021-00 | CERAMIC CHIP 0.01MF | 10% | 50V | |
| C901 | 1-124-462-00 | ELECT 10MF | 20% | 16V | |
| C902 | 1-124-236-00 | ELECT 47MF | 20% | 16V | |
| C903 | 1-124-462-00 | ELECT 10MF | 20% | 16V | |
| C904 | 1-124-462-00 | ELECT 10MF | 20% | 16V | |
| C905 | 1-124-236-00 | ELECT 47MF | 20% | 16V | |
| C906 | 1-124-236-00 | ELECT 47MF | 20% | 16V | |
| C907 | 1-124-236-00 | ELECT 47MF | 20% | 16V | |
| C908 | 1-124-249-11 | ELECT 0.3MF | 20% | 50V | |
| C909 | 1-124-255-11 | ELECT 1MF | 20% | 50V | |
| CN404 | 1-563-932-11 | CONNECTOR, F.P.C 21P | | | |
| CN406 | 1-562-886-11 | CONNECTOR, F.P.C 12P | | | |
| CN601 | *1-562-664-11 | SOCKET, CONNECTOR 21P | | | |
| CN603 | *1-564-007-00 | PIN, CONNECTOR 8P | | | |
| CN607 | *1-564-001-11 | PIN, CONNECTOR 2P | | | |
| CNJ301 | 1-562-631-11 | SOCKET, CONNECTOR | | | |
| CN701 | *1-564-004-00 | PIN, CONNECTOR 5P | | | |
| CNP801 | *1-564-003-00 | PIN, CONNECTOR 4P | | | |
| CT601 | 1-141-288-11 | TRIMMER | | | |
| D002 | 8-719-801-67 | DIODE DLS1585 | | | |
| D003 | 8-719-976-19 | DIODE RLS-4148 | | | |
| D101 | 8-719-109-97 | DIODE RD6.8ESB2 | | | |
| D201 | 8-719-946-77 | DIODE AA1101P | | | |
| D202 | 8-719-946-77 | DIODE AA1101P | | | |
| D203 | 8-719-946-77 | DIODE AA1101P | | | |
| D204 | 8-719-946-77 | DIODE AA1101P | | | |
| D205 | 8-719-946-78 | DIODE VR1101P | | | |
| D401 | 8-719-100-03 | DIODE 1S2835 | | | |
| D601 | 8-719-109-51 | DIODE RD2.0ES-B2 | | | |
| D602 | 8-719-801-67 | DIODE DLS1585 | | | |
| D604 | 8-719-106-23 | DIODE RD7.5M-B2 | | | |
| D605 | 8-719-945-59 | DIODE DSA3A4 | | | |

ELECTRICAL PARTS

| Ref.No. | Part No. | Description |
|---------|--------------|---------------------------|
| D606 | 8-719-801-67 | DIODE DLS1585 |
| D651 | 8-719-106-54 | DIODE RD10M-B3 |
| D901 | 8-719-109-93 | DIODE RD6.2ES-B2 |
| D902 | 8-719-109-97 | DIODE RD6.8ES-B2 |
| D903 | 8-719-112-55 | DIODE RD9, 1ES-B3 |
| D904 | 8-719-100-03 | DIODE 1S2835 |
| F901 | 1-532-419-11 | FUSE (3.15 A) |
| F902 | 1-532-360-XX | FUSE (1 A) |
| F903 | 1-532-360-XX | FUSE (1 A) |
| HP101 | 1-543-413-11 | HEAD, MAGNETIC (PLAYBACK) |
| IC101 | 8-759-105-60 | IC UPC1228HA |
| IC301 | 8-759-105-48 | IC UPC1284G |
| IC401 | 8-759-941-15 | IC M888201-550K |
| IC402 | 8-759-905-47 | IC BA338 |
| IC601 | 8-759-941-14 | IC M888202-549M |
| IC651 | 8-759-600-24 | IC M54543L |
| IC801 | 8-759-140-74 | IC UPC1470H-X |
| JW104 | 1-216-296-00 | METAL GLAZE 0 5% 1/8W |
| JW105 | 1-216-295-00 | METAL GLAZE 0 5% 1/10W |
| JW604 | 1-216-296-00 | METAL GLAZE 0 5% 1/8W |
| L801 | 1-410-814-11 | INDUCTOR 3.3UH |
| L901 | 1-410-838-11 | INDUCTOR 330UH |
| L902 | 1-410-838-11 | INDUCTOR 330UH |
| M651 | X-3339-906-1 | MOTOR ASSY (LOADING) |
| M801 | 3-391-672-01 | MOTOR ASSY (CAPSTAN) |
| PL201 | 1-518-626-11 | LAMP, PILOT |
| PL202 | 1-518-626-11 | LAMP, PILOT |
| PL401 | 1-518-604-11 | LAMP, PILOT |
| PL701 | 1-518-626-11 | LAMP, PILOT |
| PM401 | 1-454-359-00 | SOLENOID, PLUNGER |
| Q205 | 8-729-901-00 | TRANSISTOR DTC124EK |
| Q301 | 8-729-100-67 | TRANSISTOR 2SC1623-L7 |
| Q302 | 8-729-100-67 | TRANSISTOR 2SC1623-L7 |
| Q351 | 8-729-100-67 | TRANSISTOR 2SC1623-L7 |
| Q352 | 8-729-100-67 | TRANSISTOR 2SC1623-L7 |
| Q371 | 8-729-901-00 | TRANSISTOR DTC124EK |
| Q401 | 8-729-901-00 | TRANSISTOR DTC124EK |
| Q405 | 8-729-101-07 | TRANSISTOR 2SB798 |
| Q406 | 8-729-100-67 | TRANSISTOR 2SC1623-L7 |
| Q501 | 8-729-100-67 | TRANSISTOR 2SC1623-L7 |
| Q551 | 8-729-100-67 | TRANSISTOR 2SC1623-L7 |
| Q601 | 8-729-901-00 | TRANSISTOR DTC124EK |
| Q602 | 8-729-901-00 | TRANSISTOR DTC124EK |
| Q603 | 8-729-116-42 | TRANSISTOR 2SD1164 |
| Q604 | 8-729-901-00 | TRANSISTOR DTC124EK |
| Q605 | 8-729-100-67 | TRANSISTOR 2SC1623-L7 |
| Q606 | 8-729-901-00 | TRANSISTOR DTC124EK |
| Q607 | 8-729-901-00 | TRANSISTOR DTC124EK |
| Q608 | 8-729-901-23 | TRANSISTOR DTC143TK |
| Q609 | 8-729-901-00 | TRANSISTOR DTC124EK |
| Q610 | 8-729-901-01 | TRANSISTOR DTC144EK |

ELECTRICAL PARTS

| Ref.No. | Part No. | Description |
|---------|--------------|---------------------------|
| Q611 | 8-729-901-05 | TRANSISTOR DTB123EK |
| Q612 | 8-729-100-67 | TRANSISTOR 2SC1623-L7 |
| Q613 | 8-729-100-67 | TRANSISTOR 2SC1623-L7 |
| Q614 | 8-729-901-05 | TRANSISTOR DTA124EK |
| Q615 | 8-729-901-05 | TRANSISTOR DTA124EK |
| Q651 | 8-729-901-05 | TRANSISTOR DTA124EK |
| Q652 | 8-729-188-23 | TRANSISTOR 2SD882 |
| Q653 | 8-729-100-67 | TRANSISTOR 2SC1623-L7 |
| Q901 | 8-729-188-23 | TRANSISTOR 2SD882 |
| Q902 | 8-729-901-47 | TRANSISTOR DTA143EK |
| Q903 | 8-729-100-67 | TRANSISTOR 2SC1623-L7 |
| Q904 | 8-729-177-43 | TRANSISTOR 2SD774 |
| Q905 | 8-729-901-00 | TRANSISTOR DTC124EK |
| R001 | 1-216-083-00 | METAL GLAZE 27K 5% 1/10W |
| R101 | 1-216-027-00 | METAL GLAZE 120 5% 1/10W |
| R102 | 1-216-071-00 | METAL GLAZE 8.2K 5% 1/10W |
| R103 | 1-216-105-00 | METAL GLAZE 220K 5% 1/10W |
| R104 | 1-216-025-00 | METAL GLAZE 100 5% 1/10W |
| R151 | 1-216-027-00 | METAL GLAZE 120 5% 1/10W |
| R152 | 1-216-071-00 | METAL GLAZE 8.2K 5% 1/10W |
| R153 | 1-216-105-00 | METAL GLAZE 220K 5% 1/10W |
| R201 | 1-216-035-00 | METAL GLAZE 270 5% 1/10W |
| R202 | 1-216-035-00 | METAL GLAZE 270 5% 1/10W |
| R203 | 1-216-035-00 | METAL GLAZE 270 5% 1/10W |
| R204 | 1-216-035-00 | METAL GLAZE 270 5% 1/10W |
| R205 | 1-216-035-00 | METAL GLAZE 270 5% 1/10W |
| R206 | 1-216-057-00 | METAL GLAZE 2.2K 5% 1/10W |
| R301 | 1-249-349-11 | CARBON MELF 15K 5% 1/8W |
| R302 | 1-216-043-00 | CARBON MELF 560 5% 1/8W |
| R303 | 1-249-353-11 | CARBON MELF 33K 5% 1/8W |
| R304 | 1-249-338-00 | CARBON MELF 1.8K 5% 1/8W |
| R305 | 1-249-345-11 | CARBON MELF 6.8K 5% 1/8W |
| R306 | 1-249-341-11 | CARBON MELF 3.3K 5% 1/8W |
| R307 | 1-249-355-11 | CARBON MELF 47K 5% 1/8W |
| R308 | 1-216-116-00 | METAL GLAZE 620K 5% 1/10W |
| R309 | 1-249-362-11 | CARBON MELF 180K 5% 1/8W |
| R351 | 1-249-349-11 | CARBON MELF 15K 5% 1/8W |
| R352 | 1-216-043-00 | CARBON MELF 560 5% 1/8W |
| R353 | 1-249-353-11 | CARBON MELF 33K 5% 1/8W |
| R354 | 1-249-338-11 | CARBON MELF 1.8K 5% 1/8W |
| R355 | 1-249-345-11 | CARBON MELF 6.8K 5% 1/8W |
| R356 | 1-249-341-11 | CARBON MELF 3.3K 5% 1/8W |
| R357 | 1-249-355-11 | CARBON MELF 47K 5% 1/8W |
| R358 | 1-216-116-00 | METAL GLAZE 620K 5% 1/10W |
| R359 | 1-249-362-11 | CARBON MELF 180K 5% 1/8W |
| R371 | 1-249-353-11 | CARBON MELF 33K 5% 1/8W |
| R372 | 1-249-339-11 | CARBON MELF 2.2K 5% 1/8W |
| R375 | 1-249-345-11 | CARBON MELF 6.8K 5% 1/8W |
| R401 | 1-216-073-00 | METAL GLAZE 10K 5% 1/10W |

ELECTRICAL PARTS

| Ref.No. | Part No. | Description | | | |
|---------|--------------|-------------|------|----|--------|
| R402 | 1-216-091-00 | METAL GLAZE | 56K | 5% | 1/10W |
| R403 | 1-216-071-00 | METAL GLAZE | 8.2K | 5% | 1/10W |
| R405 | 1-216-073-00 | METAL GLAZE | 10K | 5% | 1/10W |
| R406 | 1-216-055-00 | METAL GLAZE | 1.8K | 5% | 1/10W |
| R407 | 1-216-049-00 | METAL GLAZE | 1K | 5% | 1/10W |
| R408 | 1-216-046-91 | METAL GLAZE | 750 | 5% | 1/10W |
| R409 | 1-216-073-00 | METAL GLAZE | 10K | 5% | 1/10W |
| R410 | 1-216-073-00 | METAL GLAZE | 10K | 5% | 1/10W |
| R411 | 1-216-073-00 | METAL GLAZE | 10K | 5% | 1/10W |
| R412 | 1-216-073-00 | METAL GLAZE | 10K | 5% | 1/10W |
| R450 | 1-216-073-00 | METAL GLAZE | 10K | 5% | 1/10W |
| R451 | 1-216-046-91 | METAL GLAZE | 750 | 5% | 1/10W |
| R501 | 1-249-336-11 | CARBON MELF | 1.2K | 5% | 1/8W |
| R502 | 1-249-350-11 | CARBON MELF | 18K | 5% | 1/8W |
| R503 | 1-249-333-11 | CARBON MELF | 680 | 5% | 1/8W |
| R504 | 1-249-335-11 | CARBON MELF | 1K | 5% | 1/8W |
| R551 | 1-249-336-11 | CARBON MELF | 1.2K | 5% | 1/8W |
| R552 | 1-249-350-11 | CARBON MELF | 18K | 5% | 1/8W |
| R553 | 1-249-333-11 | CARBON MELF | 680 | 5% | 1/8W |
| R554 | 1-249-335-11 | CARBON MELF | 1K | 5% | 1/8W |
| R601 | 1-247-743-11 | CARBON | 220 | 5% | 1/2W |
| R602 | 1-247-735-11 | CARBON | 47 | 5% | 1/2W |
| R604 | 1-216-073-00 | METAL GLAZE | 10K | 5% | 1/10W |
| R605 | 1-216-081-00 | METAL GLAZE | 22K | 5% | 1/10W |
| R606 | 1-216-089-00 | METAL GLAZE | 47K | 5% | 1/10W |
| R607 | 1-216-067-00 | METAL GLAZE | 5.6K | 5% | 1/10W |
| R608 | 1-216-174-00 | METAL GLAZE | 100 | 5% | 1/8W |
| R609 | 1-216-073-00 | METAL GLAZE | 10K | 5% | 1/10W |
| R610 | 1-216-073-00 | METAL GLAZE | 10K | 5% | 1/10W |
| R611 | 1-216-073-00 | METAL GLAZE | 10K | 5% | 1/10W |
| R613 | 1-216-073-00 | METAL GLAZE | 10K | 5% | 1/10W |
| R614 | 1-216-073-00 | METAL GLAZE | 10K | 5% | 1/10W |
| R615 | 1-216-053-00 | METAL GLAZE | 1.5K | 5% | 1/10W |
| R616 | 1-216-071-00 | METAL GLAZE | 8.2K | 5% | 1/10W |
| R651 | 1-216-186-00 | METAL GLAZE | 330 | 5% | 1/8W |
| R652 | 1-216-081-00 | METAL GLAZE | 22K | 5% | 1/10W |
| R653 | 1-216-081-00 | METAL GLAZE | 22K | 5% | 1/10W |
| R654 | 1-249-478-11 | CARBON | 2.2 | 5% | 1/2W F |
| R661 | 1-216-087-91 | METAL GLAZE | 39K | 5% | 1/10W |
| R701 | 1-216-053-00 | METAL GLAZE | 1.5K | 5% | 1/10W |
| R702 | 1-216-053-00 | METAL GLAZE | 1.5K | 5% | 1/10W |
| R703 | 1-216-057-00 | METAL GLAZE | 2.2K | 5% | 1/10W |
| R801 | 1-216-044-00 | METAL GLAZE | 620 | 5% | 1/10W |
| R802 | 1-216-032-00 | METAL GLAZE | 200 | 5% | 1/10W |
| R803 | 1-216-059-00 | METAL GLAZE | 2.7K | 5% | 1/10W |
| R805 | 1-216-031-00 | METAL GLAZE | 180 | 5% | 1/10W |
| R901 | 1-216-047-00 | METAL GLAZE | 820 | 5% | 1/10W |
| R904 | 1-216-053-00 | METAL GLAZE | 1.5K | 5% | 1/10W |
| R905 | 1-216-071-00 | METAL GLAZE | 8.2K | 5% | 1/10W |
| R906 | 1-216-043-00 | METAL GLAZE | 560 | 5% | 1/10W |
| R907 | 1-216-001-00 | METAL GLAZE | 10 | 5% | 1/10W |
| R998 | 1-216-198-91 | METAL GLAZE | 1K | 5% | 1/8W |
| R999 | 1-216-073-00 | METAL GLAZE | 10K | 5% | 1/10W |

ELECTRICAL PARTS

| Ref.No. | Part No. | Description |
|---------|--------------|-------------------------------------|
| RV301 | 1-230-524-11 | RES, ADJ, METAL GLAZE 22K |
| RV351 | 1-230-524-11 | RES, ADJ, METAL GLAZE 22K |
| RV801 | 1-230-329-11 | RES, ADJ, CARBON 470 (SPEED ADJ) |
| SW101 | 1-571-002-11 | SWITCH, SLIDE |
| SW201 | 1-571-004-11 | SWITCH, PUSH (1 KEY)(PLAY SENSE) |
| SW202 | 1-571-003-11 | SWITCH, LEAF (MUTING) |
| SW203 | 1-554-024-00 | SWITCH, LEAF (FF SENSE)(▶▶) |
| SW204 | 1-554-024-00 | SWITCH, LEAF (REW SENSE)(◀◀) |
| SW301 | 1-571-002-11 | SWITCH, SLIDE (METAL) |
| SW401 | 1-570-953-11 | SWITCH, PUSH (1 KEY)(TAPE SENSE) |
| SW402 | 1-571-004-11 | SWITCH, PUSH (1 KEY)(FR MUTING) |
| SW601 | 1-553-226-00 | SWITCH, LEAF (OPENED SENSE) |
| SW651 | 1-553-226-00 | SWITCH, LEAF (CLOSED SENSE) |
| SW701 | 1-554-937-11 | SWITCH, KEY BOARD (STOP)(■) |
| SW702 | 1-554-937-11 | SWITCH, KEY BOARD (PLAY)(▶) |
| SW703 | 1-571-005-11 | SWITCH, PUSH (1 KEY)(DOLBY NR) |
| SW704 | 1-571-005-11 | SWITCH, PUSH (1 KEY)(AMS) |
| SW801 | 1-570-953-11 | SWITCH, PUSH (1 KEY)(OPEN/CLOSE)(▲) |
| TH801 | 1-807-762-11 | THERMISTOR, POSITIVE (1.5K 3600RPM) |

ACCESSORY & PACKING MATERIAL

| Part No. | Description |
|---------------|---------------------------------|
| 3-310-655-01 | SUPPORT (ND), FITTING |
| 3-315-736-22 | BRACKET, NEW D |
| 3-320-636-01 | BAG (C), PROTECTION |
| 3-339-927-01 | SPACER |
| 3-339-994-01 | INDIVIDUAL CARTON |
| 3-339-941-01 | CUSHION (F&R) |
| *3-342-438-01 | CASE, RECEIVE |
| 3-701-613-01 | BAG, POLYETHYLENE |
| 3-701-628-00 | BAG, POLYETHYLENE |
| 3-764-704-11 | (AEP,E).....FITTING DRAWING |
| 3-764-704-21 | (US,Canadian)...FITTING DRAWING |
| 3-764-704-31 | (Canadian).....FITTING DRAWING |
| 3-764-704-41 | (AEP,E).....FITTING DRAWING |
| 3-769-393-11 | MANUAL, INSTRUCTION |
| 3-769-393-41 | (AEP,E)...MANUAL, INSTRUCTION |
| 3-795-515-30 | (Canadian)...CARD, WARRANTY |
| 7-682-261-09 | SCREW +K 4X8 |
| X-3315-702-1 | SCREW ASSY (25MM), FITTING |