

# WM-FX163

## SERVICE MANUAL

*US Model  
AEP Model  
E Model*

Model WM-FX163 is almost same as WM-FX123 model.  
This manual contains only the points which differ from WM-FX123 model.  
However, accessories and packing materials are all listed.  
For the informations not contained in this manual, please refer to WM-FX123 service manual (9-960-557-11) previously issued.

### 1. DIFFERENCE PARTS LIST

| Page | WM-FX123 |              |   |        | WM-FX163 |              |  |        |
|------|----------|--------------|---|--------|----------|--------------|--|--------|
|      | Ref. No. | Part No.     | Description   | Remark | Ref. No. | Part No.     | Description                                      | Remark |
| 16   | 1        | X-3371-824-1 | CABINET (REAR) SUB ASSY (BLACK)<br>(MADE IN CHINA) (US, CND, E, EA) |        | 1        | X-3374-834-1 | CABINET (REAR) SUB ASSY (BLACK)<br>(AEP, FR, IT) |        |
|      | 1        | X-3371-825-1 | CABINET (REAR) SUB ASSY (BLUE)<br>(US, CND, AEP, UK, IT, EE, E, EA) |        | 1        | X-3374-984-1 | CABINET (REAR) SUB ASSY (BLACK)<br>(US, EE, E)   |        |
|      | 1        | X-3371-832-1 | CABINET (REAR) SUB ASSY (RED)<br>(US, CND, AEP, UK, IT, EE, E, EA)  |        | 1        | X-3374-987-1 | CABINET (REAR) SUB ASSY (OTHERS)<br>(US, E)      |        |
|      | 1        | X-3371-833-1 | CABINET (REAR) SUB ASSY (RED)<br>(US, CND, AEP, UK, IT, EE, E, EA)  |        |          |              |  |        |
|      | 1        | X-3371-834-1 | CABINET (REAR) SUB ASSY (BLACK)<br>(AEP, UK, IT)                    |        |          |              |  |        |
|      | 1        | X-3371-838-1 | CABINET (REAR) SUB ASSY (BLACK)<br>(EE)                             |        |          |              |  |        |
|      | 3        | 3-935-477-01 | LID, BATT (BLACK)   |        | 3        | 3-937-355-01 | LID, BATT (BLACK)                                |        |
|      | 3        | 3-935-477-31 | LID, BATT (GREEN)   |        | 3        | 3-937-355-41 | LID, BATT (OTHERS)                               |        |
|      | 3        | 3-935-477-51 | LID, BATT (BLUE)  |        |          |              |  |        |
|      | 3        | 3-935-477-61 | LID, BATT (RED)   |        |          |              |  |        |
|      | 8        |              |   |        | 8        | A-3021-014-A | MAIN BOARD, COMPLETE (FR)                        |        |
|      | 11       | X-3371-790-1 | HOLDER (CF-MB) SUB ASSY (BLACK)<br>(US, CND)                        |        | 11       | X-3374-836-1 | HOLDER (CF-MB) SUB ASSY (BLACK)<br>(AEP, FR)     |        |
|      | 11       | X-3371-791-1 | HOLDER (CF-MB) SUB ASSY (BLUE)<br>(US, CND)                         |        | 11       | X-3374-837-1 | HOLDER (CF-MB) SUB ASSY (BLACK)<br>(IT)          |        |
|      | 11       | X-3371-792-1 | HOLDER (CF-MB) SUB ASSY (GREEN)<br>(US, CND)                        |        | 11       | X-3374-838-1 | HOLDER (CF-MB) SUB ASSY (BLACK)<br>(EE)          |        |
|      | 11       | X-3371-793-1 | HOLDER (CF-MB) SUB ASSY (RED)<br>(US, CND)                          |        | 11       | X-3374-983-1 | HOLDER (CF-MB) SUB ASSY (BLACK)<br>(US)          |        |
|      | 11       | X-3371-794-1 | HOLDER (CF-MB) SUB ASSY (BLACK)<br>(AEP, UK, E)                     |        | 11       | X-3374-985-1 | HOLDER (CF-MB) SUB ASSY (BLUE)<br>(US, E)        |        |
|      | 11       | X-3371-795-1 | HOLDER (CF-MB) SUB ASSY (BLUE)<br>(AEP, UK, E)                      |        | 11       | X-3374-986-1 | HOLDER (CF-MB) SUB ASSY (RED)<br>(US, E)         |        |
|      | 11       | X-3371-802-1 | HOLDER (CF-MB) SUB ASSY (GREEN)<br>(AEP, UK, E)                     |        |          |              |  |        |

- Abbreviation  
CND : Canadian model  
IT : Italian model  
EE : East European model  
EA : Saudi Arabia model  
FR : French model

RADIO CASSETTE PLAYER



SONY®

| Page | WM-FX123 |              |  |        | WM-FX163 |              |   |        |
|------|----------|--------------|--|--------|----------|--------------|---|--------|
|      | Ref. No. | Part No.     | Description  | Remark | Ref. No. | Part No.     | Description   | Remark |
| 16   | 11       | X-3371-803-1 | HOLDER (CF-MB) SUB ASSY (RED)<br>(AEP, UK, E)              |        |          |              |   |        |
|      | 11       | X-3371-804-1 | HOLDER (CF-MB) SUB ASSY (BLUE)<br>(IT, EA)                 |        |          |              |   |        |
|      | 11       | X-3371-805-1 | HOLDER (CF-MB) SUB ASSY (BLUE)<br>(IT, EA)                 |        |          |              |   |        |
|      | 11       | X-3371-806-1 | HOLDER (CF-MB) SUB ASSY (GREEN)<br>(IT, EA)                |        |          |              |   |        |
|      | 11       | X-3371-807-1 | HOLDER (CF-MB) SUB ASSY (RED)<br>(IT, EA)                  |        |          |              |   |        |
|      | 11       | X-3371-820-1 | HOLDER (CF-MB) SUB ASSY (BLACK)<br>(EE)                    |        |          |              |   |        |
|      | 11       | X-3371-821-1 | HOLDER (CF-MB) SUB ASSY (BLUE) (EE)                        |        |          |              |   |        |
|      | 11       | X-3371-822-1 | HOLDER (CF-MB) SUB ASSY (GREEN)<br>(EE)                    |        |          |              |   |        |
|      | 11       | X-3371-823-1 | HOLDER (CF-MB) SUB ASSY (RED) (EE)                         |        |          |              |   |        |
|      | 12       | 3-933-649-01 | KNOB (M/B)   |        | 12       | 3-939-091-01 | KNOB (M/B) (BLACK)                                  |        |
|      | 15       | 3-933-685-01 | CABINET (FRONT) (CF-O) (BLACK)<br>(AEP, UK, E, IT, EE, EA) |        | 12       | 3-939-091-11 | KNOB (M/B) (OTHERS)                                 |        |
|      | 15       | 3-933-685-11 | CABINET (FRONT) (CF-O) (BLUE)<br>(AEP, UK, E, IT, EE, EA)  |        | 15       | 3-937-353-01 | CABINET (FRONT) (CF-O) (BLACK)<br>(US,E)            |        |
|      | 15       | 3-933-685-21 | CABINET (FRONT) (CF-O) (GREEN)<br>(AEP, UK, E, IT, EE, EA) |        | 15       | 3-937-353-81 | CABINET (FRONT) (CF-O) (OTHERS)<br>(US,E)           |        |
|      | 15       | 3-933-685-31 | CABINET (FRONT) (CF-O) (RED)<br>(AEP, UK, E, IT, EE, EA)   |        | 15       | 3-937-353-41 | CABINET (FRONT) (CF-O) (BLACK)<br>(AEP, FR, IT, EE) |        |
|      | 15       | 3-933-685-51 | CABINET (FRONT) (CF-O) (BLACK)<br>(US, CND)                |        |          |              |   |        |
|      | 15       | 3-933-685-61 | CABINET (FRONT) (CF-O) (BLUE)<br>(US, CND)                 |        |          |              |   |        |
|      | 15       | 3-933-685-71 | CABINET (FRONT) (CF-O) (GREEN)<br>(US, CND)                |        |          |              |   |        |
|      | 15       | 3-933-685-81 | CABINET (FRONT) (CF-O) (RED) (US, CND)                     |        |          |              |   |        |

- Abbreviation  
CND : Canadian model  
IT : Italian model  
EE : East European model  
EA : Saudi Arabia model  
FR : French model

## 2. ACCESSORIES & PACKING MATERIALS

- Items marked "\*" are not stocked since they are seldom required for routine service. Some delay should be anticipated when ordering these items.
- Abbreviation  
IT : Italian model  
EE : East European model  
FR : French model

| Ref. No. | Part No.     | Description   | Remark | Ref. No. | Part No.     | Description                                      | Remark |
|----------|--------------|---|--------|----------|--------------|--|--------|
|          | 1-505-521-11 | HEADPHONE (MD-023)  |        |          | 3-859-487-61 | MANUAL, INSTRUCTION<br>(SPANISH, PORTUGUESE) (E) |        |
|          | 3-861-487-11 | MANUAL, INSTRUCTION (ENGLISH) (US)  |        |          |              |  |        |
|          | 3-859-487-21 | MANUAL, INSTRUCTION (FRENCH) (FR)   |        | *        | 3-008-925-01 | CUSHION (UPPER) (US, AEP, FR, IT)                |        |
|          | 3-861-487-31 | MANUAL, INSTRUCTION (ENGLISH, DANISH,<br>GERMAN, SPANISH, DUTCH, SWEDISH,<br>ITALIAN, PORTUGUESE) (AEP, IT, EE) |        | *        | 3-008-926-01 | CUSHION (LOWER) (US, AEP, FR, IT)                |        |
|          | 3-859-487-41 | MANUAL, INSTRUCTION (ENGLISH, DANISH,<br>GERMAN, SPANISH, DUTCH, SWEDISH,<br>ITALIAN, PORTUGUESE) (AEP)         |        |          | X-3372-629-2 | CLIP, BELT ASSY                                  |        |

# WM-FX123

## SERVICE MANUAL

US Model  
Canadian Model  
AEP Model  
UK Model  
E Model



|                                    |                 |
|------------------------------------|-----------------|
| Model Name Using Similar Mechanism | WM-FX121        |
| Tape Transport Mechanism Type      | MF-WMFX103-48CY |

### SPECIFICATIONS

#### Radio Frequency

FM : 65 – 107.9 MHz (East European Model)  
: 87.5 – 108 MHz (Italy, Saudi Arabia Model)  
: 87.6 – 108 MHz (US, Canadian Model)  
: 87.6 – 107.9 MHz (AEP, UK, E Model)  
AM : 526.5 – 1,606.5 kHz (Italy, Saudi Arabia Model)  
: 530 – 1,710 kHz (US, Canadian Model)  
: 531 – 1,602 kHz (AEP, UK, E, East European Model)

#### Power Requirements

3V DC Batteries AA (R6) x 2  
External DC 3 V power sources

#### Battery Life

(approximate hours when using the batteries specified below)

| Battery                | Playback | Radio    |
|------------------------|----------|----------|
| Sony Alkaline LR6 (SG) | 13 hours | 30 hours |
| Sony R6P (SR)          | 4 hours  | 15 hours |

#### Dimensions

118.8 x 89.5 x 34.1 mm (4 3/4 x 3 5/8 x 1 3/8 in.)

#### Mass

200g (7.1 oz) incl. batteries

#### Supplied Accessories

- Stereo headphones (1)
- Belt clip (1)

#### Optional Accessories

- AC power adaptor AC-E30HG
- Car battery cord DCC-E130L, DCC-E230

Your dealer may not handle some of the above listed accessories. Please ask the dealer for detailed information.

Design and specifications are subject to change without notice.

#### Using External Power Sources

You can connect the following external power sources through the DC IN 3V jack located on the bottom.

(When you plug a cord into the DC IN 3 V jack, the internal batteries are automatically bypassed.)

- House current using an AC-E30HG AC power adaptor
- 12 V car battery using a DCC-E130L/E230 car battery cord

#### Note:

Use only the recommended AC-E30HG AC power adaptor (not supplied). Do not use any other AC power adaptor.



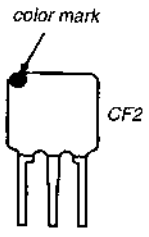
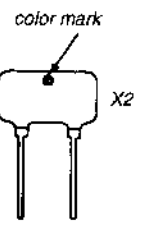
Polarity of the plug

RADIO CASSETTE PLAYER  
**SONY**®

### HOW TO CHANGED THE CERAMIC FILTERS

This model is used two ceramic filters of CF2, X2. You must used same type of color marked ceramic filters in order to meet same specifications.

Therefore, the ceramic filter must changed two pieces together since it's supply two pieces in one package as a spare parts.

|  | color mark | Center Frequency |
|--|------------|------------------|
| <br>CF2 | red        | 10.70MHz         |
|  | blue       | 10.67MHz         |
| <br>X2  | orange     | 10.73MHz         |
|  | black      | 10.64MHz         |
|  | white      | 10.67MHz         |

#### Notes on chip component replacement

- Never reuse a disconnected chip component.
- Notice that the minus side of a tantalum capacitor may be damaged by heat.

#### Flexible Circuit Board Repairing

- Keep the temperature of soldering iron around 270°C during repairing.
- Do not touch the soldering iron on the same conductor of the circuit board (within 3 times).
- Be careful not to apply force on the conductor when soldering or unsoldering.

### TABLE OF CONTENTS

| Section                                | Title                               | Page |
|--|-------------------------------------|------|
| <b>SECTION 1 GENERAL</b>               |                                     | 2    |
| <b>SECTION 2 DISASSEMBLY</b>           |                                     |      |
| 2-1.                                   | Cabinet (Rcar)                      | 3    |
| 2-2.                                   | Mechanism Deck and Main Board       | 3    |
| 2-3.                                   | Main Board                          | 4    |
| 2-4.                                   | Cassette Lid                        | 4    |
| 2-5.                                   | Mega Bass Unit                      | 5    |
| 2-6.                                   | Dial Pointer Setting                | 5    |
| <b>SECTION 3 ADJUSTMENTS</b>           |                                     |      |
| 3-1.                                   | Mechanical Adjustments              | 6    |
| 3-2.                                   | Electrical Adjustments              | 6    |
| <b>SECTION 4 DIAGRAMS</b>              |                                     |      |
| 4-1.                                   | Printed Wiring Board                | 8    |
| 4-2.                                   | Schematic Diagram                   | 11   |
| <b>SECTION 5 EXPLODED VIEWS</b>        |                                     |      |
| 5-1.                                   | Cabinet and Board Section           | 14   |
| 5-2.                                   | Mechanism Section (MF-WMFX103-48CY) | 15   |
| <b>SECTION 6 ELECTRICAL PARTS LIST</b> |                                     | 16   |

## SECTION 1 GENERAL

This section is extracted from instruction manual.



Wind rapidly.



Stop.

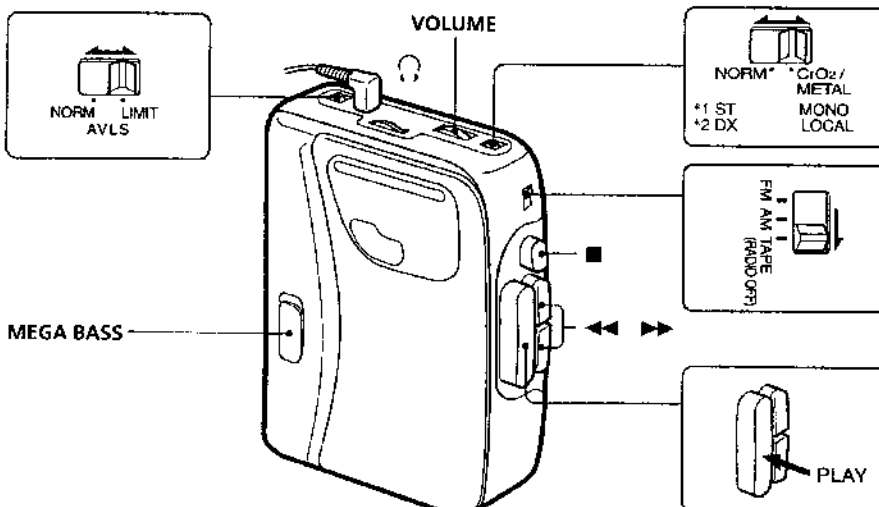
#### MEGA BASS

For deep and powerful sound.



#### Note:

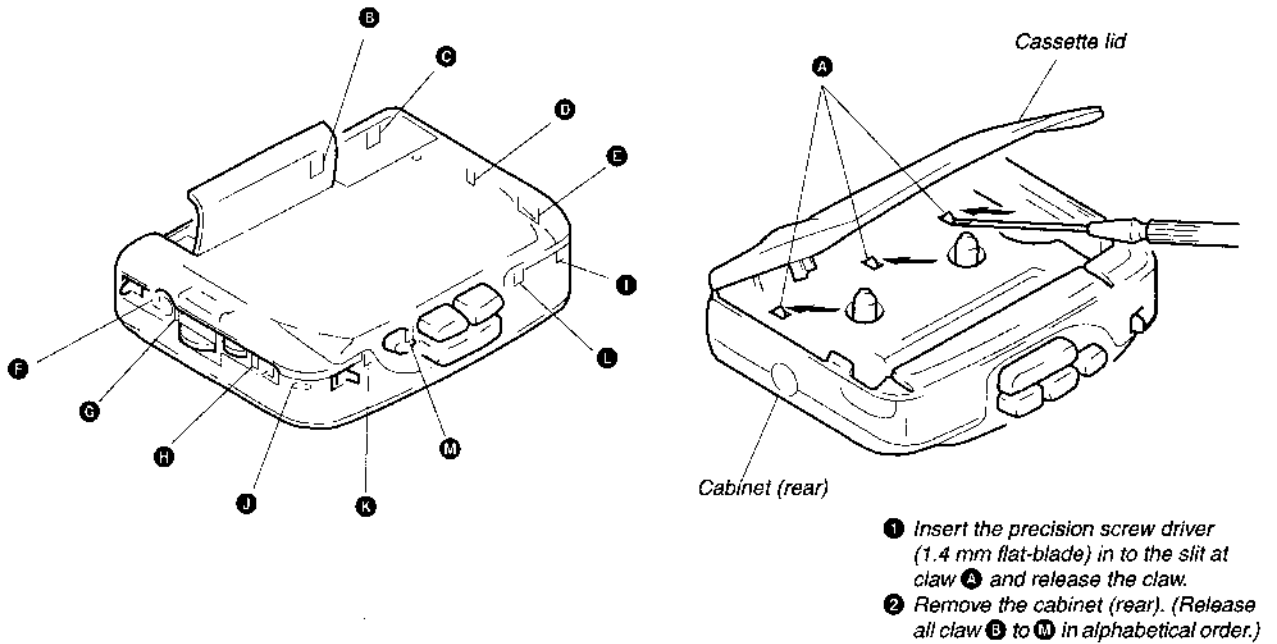
- \*1 : Except US, Canadian model.
- \*2 : US, Canadian model.



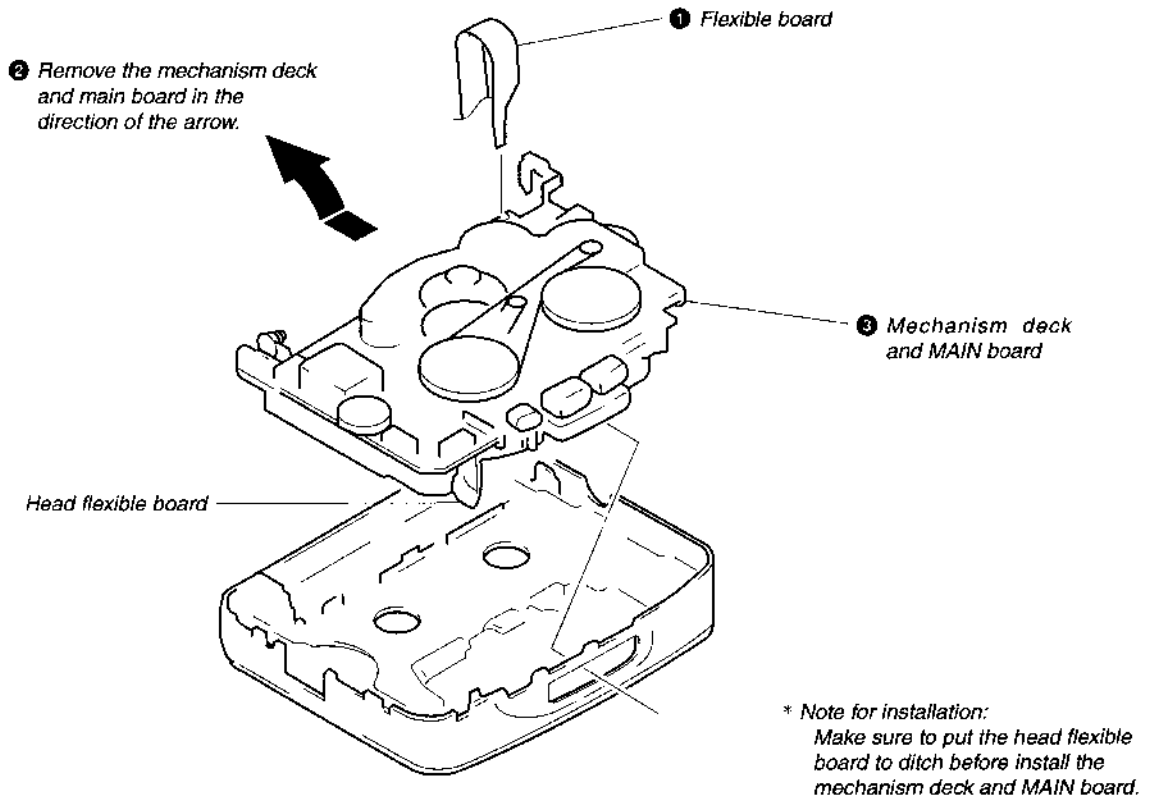
## SECTION 2 DISASSEMBLY

- Note:** • Follow the disassembly procedure in the numerical order given.  
 • Please take enough care not to break the claws when installing due to a lot of claws on this set.

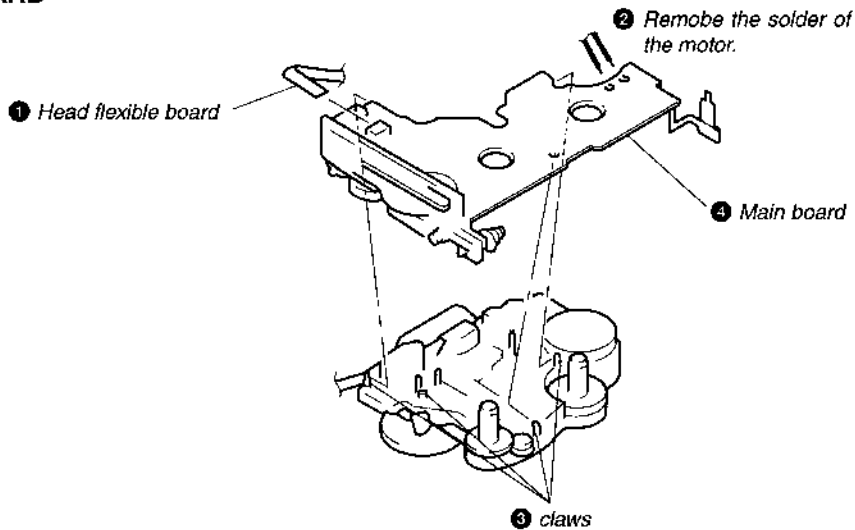
### 2-1. CABINET (REAR)



### 2-2. MECHANISM DECK AND MAIN BOARD



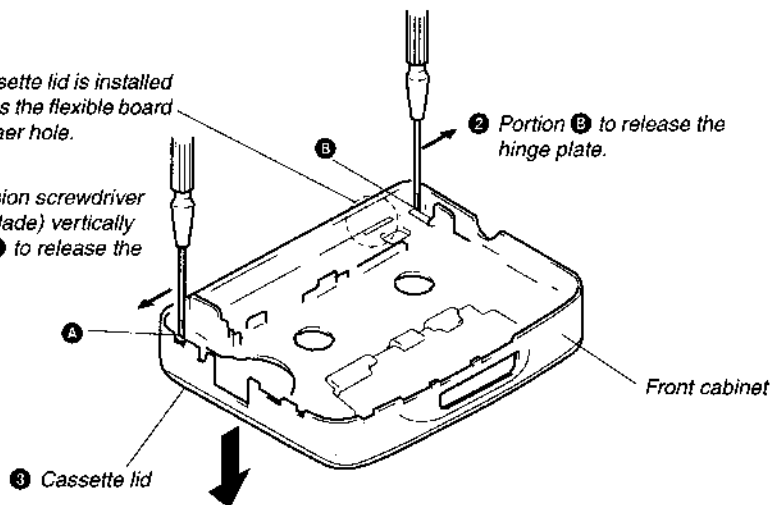
### 2-3. MAIN BOARD



### 2-4. CASSETTE LID

Note: When the Cassette lid is installed to the unit, Pass the flexible board through a squarer hole.

- ① Insert a precision screwdriver (14. mm flat-blade) vertically in to portion A to release the hinge plate.

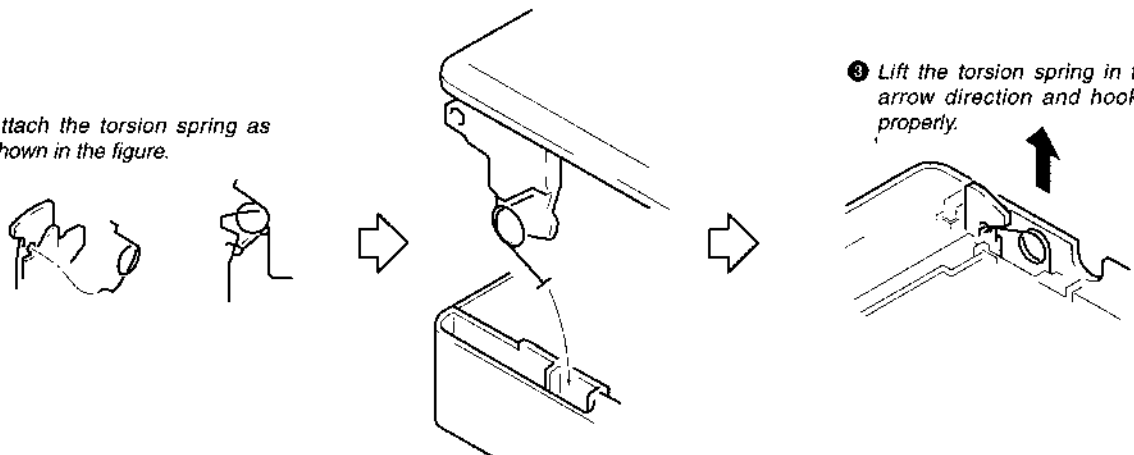


### NOTE FOR INSTALLATION

The torsion spring will be removed together with the cassette lid that perform the following for installation.

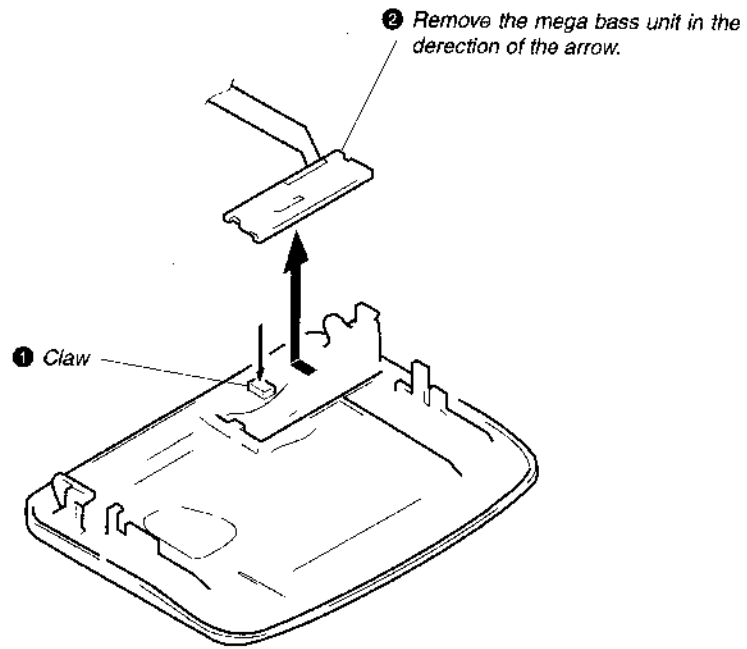
#### • TORSION SPRING

- ① Attach the torsion spring as shown in the figure.

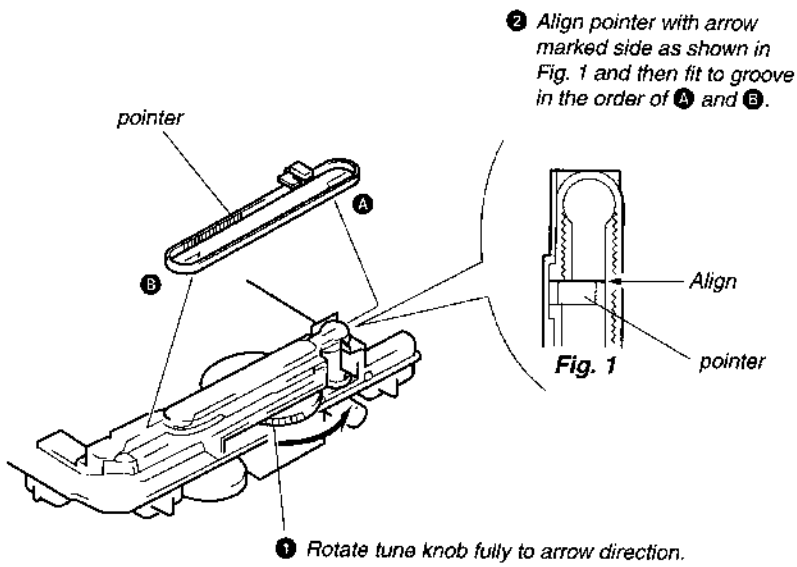


- ② Insert the torsion spring in the hole as shown in the figure.

## 2-5. MEGA BASS UNIT



## 2-6. DIAL POINTER SETTING



## SECTION 3 ADJUSTMENTS

### 3-1. MECHANICAL ADJUSTMENTS

#### Precaution

1. Clean the following parts with a denatured-alcohol-moistened swab :
 

|               |              |
|---------------|--------------|
| playback head | pinch roller |
| capstan       | rubber belts |
2. Demagnetize the playback head with a head demagnetizer.
3. Do not use a magnetized screwdriver for the adjustments.
4. The adjustments should be performed with the rated power supply voltage (2.5 V) unless otherwise noted.

#### Torque Measurement

| Mode                | Torque meter | Meter reading                                 |
|---------------------|--------------|---|
| FWD                 | CQ-102C      | 20-42 g-cm<br>(0.28-0.58 oz-inch)             |
| FWD<br>Back Tension |              | less than 2 g-cm<br>(less than 0.03 oz-inch)  |
| FF, REW             | CQ-201B      | more than 60 g-cm<br>(more than 0.83 oz-inch) |

#### Tape Pulling Force Measurement

| Mode | Torque meter | Meter reading                       |
|------|--------------|-------------------------------------|
| FWD  | CQ-403A      | more than 40g<br>(more than 1.4 oz) |

### 3-2. ELECTRICAL ADJUSTMENTS

#### Precaution

- Supplied voltage : 2.5V
- Switch and control position  
 TAPE switch : NORM  
 MEGA BASS switch : OFF  
 VOLUME control : maximum  
 AVLS switch : NORM

#### TAPE SECTION

- FUNCTION switch : TAPE

#### Test tape

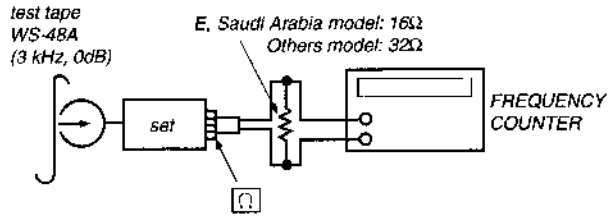
| Type   | Signal    | Used for              |
|--------|-----------|-----------------------|
| WS-48A | 3kHz, 0dB | Tape Speed Adjustment |



### Tape speed adjustment

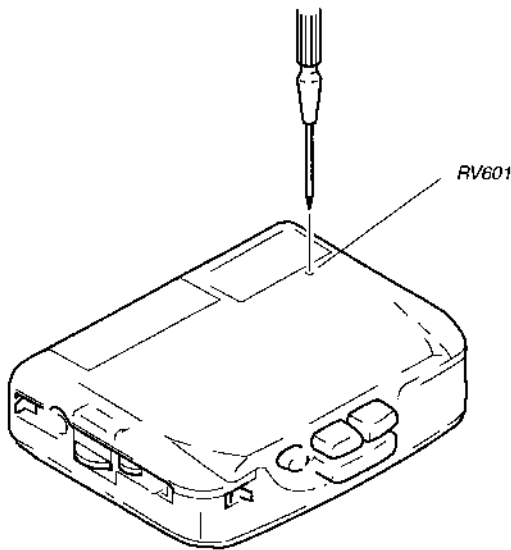
Tape selection switch : NORM

#### Procedure:



Playback WS-48A (tape center portion) in reverse mode.  
Adjust the RV601 so that the frequency counter reads 3,000Hz  $\pm$  15Hz.  
Frequency difference between the beginning and the end of the tape should be within  $\pm$  1.5%.

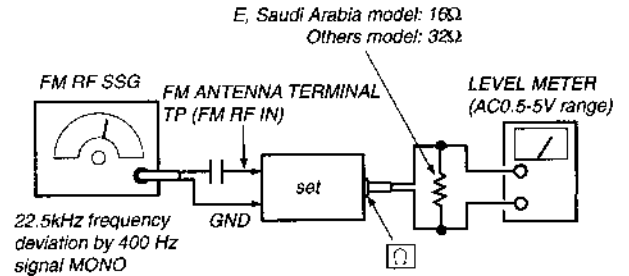
#### Adjustment Location:



## RADIO SECTION

### • FUNCTION switch: FM/AM

#### FM section



Repeat the procedure in each adjustment several times since L (3, 2) affects CT (3, 2) and CT (3, 2) affects L (3, 2). Both the frequency coverage and tracking adjustments should end with the final adjustment of the trimmer capacitors.

#### FM Frequency Coverage Adjustment

| Pointer position | SG frequency                          | Adjustment part | Reading on LEVEL METER |
|------------------|---------------------------------------|-----------------|------------------------|
| f minimum        | 86 MHz<br>(64MHz)<br>[87.35MHz]       | L3              | maximum                |
| f maximum        | 109.5MHz<br>(109.5MHz)<br>[108.25MHz] | CT3             |                        |

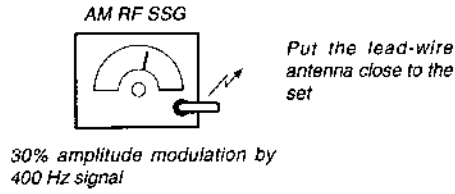
(( )) : East European model, [ ] : Italian, Saudi Arabia model

#### FM Tracking Adjustment

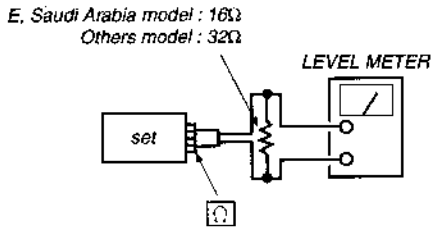
| SG and set frequency                  | Adjustment part | Reading on LEVEL METER |
|---------------------------------------|-----------------|------------------------|
| 86MHz<br>(64MHz)<br>[87.35MHz]        | L2              | maximum                |
| 109.5MHz<br>(109.5MHz)<br>[108.25MHz] | CT2             |                        |

(( )) : East European model, [ ] : Italian, Saudi Arabia model

### AM section



Repeat the procedure in each adjustment several times since L (4, 1) affects CT (4, 1) and CT (4, 1) affects L (4, 1). Both the frequency coverage and tracking adjustments should end with the final adjustment of the trimmer capacitors.



### AM Frequency Coverage Adjustment

| Pointer position | SG frequency                            | Adjustment part | Reading on LEVEL METER |
|------------------|---|-----------------|------------------------|
| f minimum        | 505kHz<br>((515kHz))<br>[516.5kHz]      | L4              | maximum                |
| f maximum        | 1,750kHz<br>((1670kHz))<br>[1,631.5kHz] | CT4             |                        |

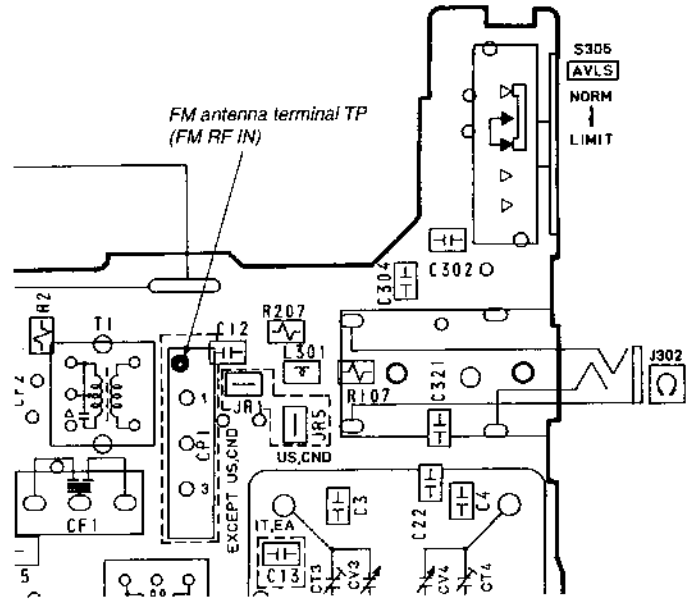
(( )) : East European model  
[ ] : Italian, Saudi Arabia model

### AM Tracking Adjustment

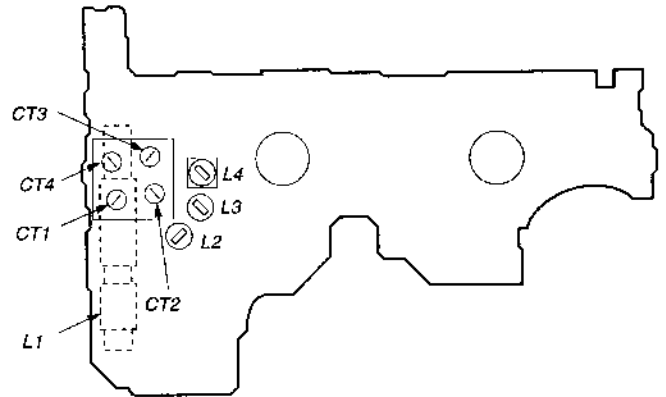
| SG and set frequency     | Adjustment part | Reading on LEVEL METER |
|--------------------------|-----------------|------------------------|
| 620kHz<br>((800kHz))     | L1              | maximum                |
| 1,400kHz<br>((1,300kHz)) | CT1             |                        |

(( )) : Italian, East European, Saudi Arabia model

### Adjustment Location: main board



- Component Side -

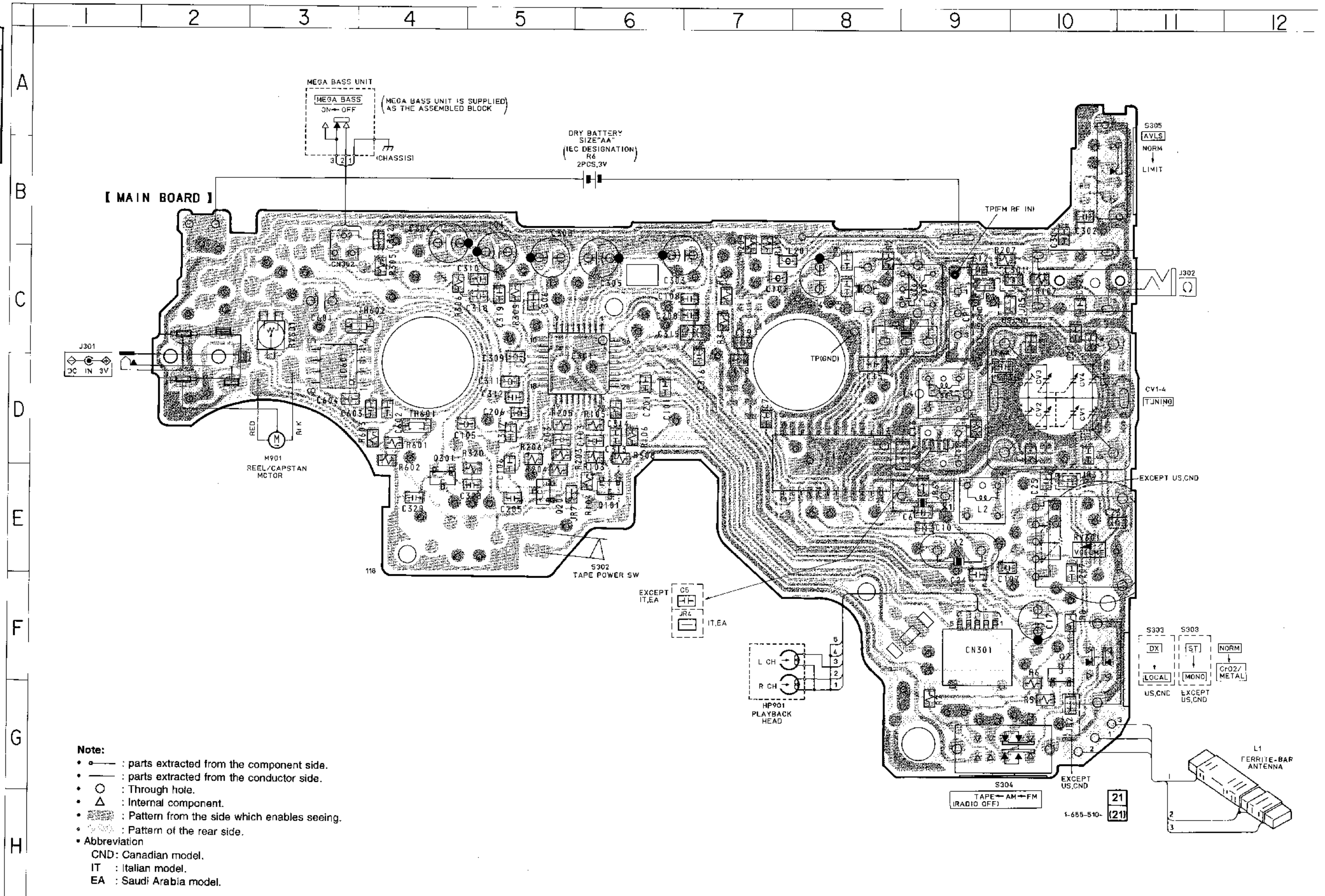


SECTION 4  
DIAGRTAMS

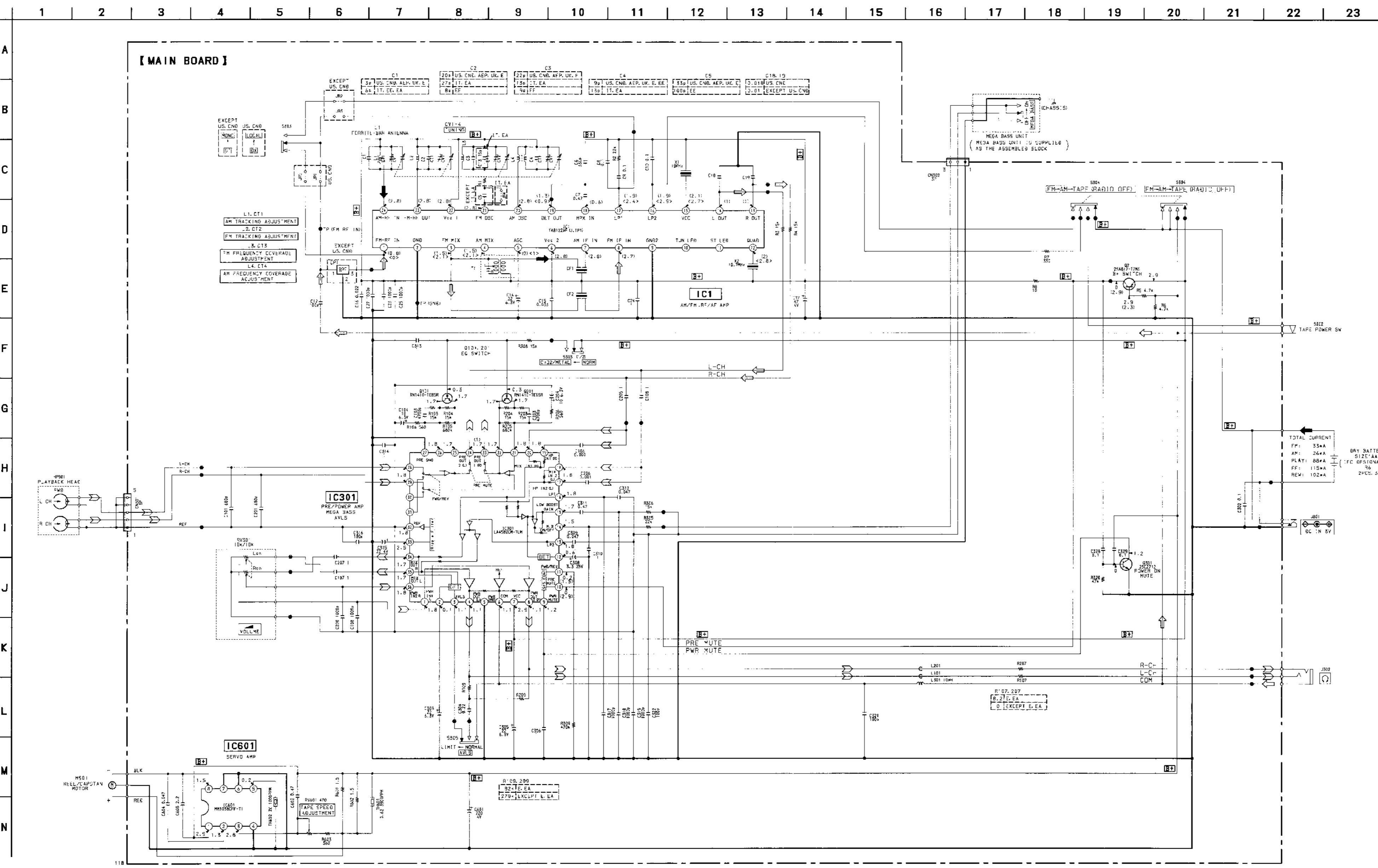
4-1. PRINTED WIRING BOARD

• Semiconductor Location

| Ref. No. | Location |
|----------|----------|
| IC1      | D-8      |
| IC301    | D-6      |
| IC601    | D-3      |
| Q2       | F-10     |
| Q101     | E-6      |
| Q201     | E-5      |
| Q301     | E-4      |



4-2. SCHEMATIC DIAGRAM



**NOTE**

- All capacitors are in  $\mu\text{F}$  unless otherwise noted,  $\mu\text{F}$ :  $\mu\text{F}$  50WV or less are not indicated except for electrolytics and tantalums.
- All resistors are in  $\Omega$  and  $1/4W$  or less unless otherwise specified.

- $\Delta$ : internal component.
- $\square$ : line.
- $\square$ : panel designation.
- $\square$ : adjustment or repair.
- Total current is measured with no cassette installed.

- Power voltage is dc 3V and fed with regulated dc power supply from external power voltage jack.
- Voltages are dc with respect to ground under no-signal (returned conditions) no work: PB ( ): FM < ): AM

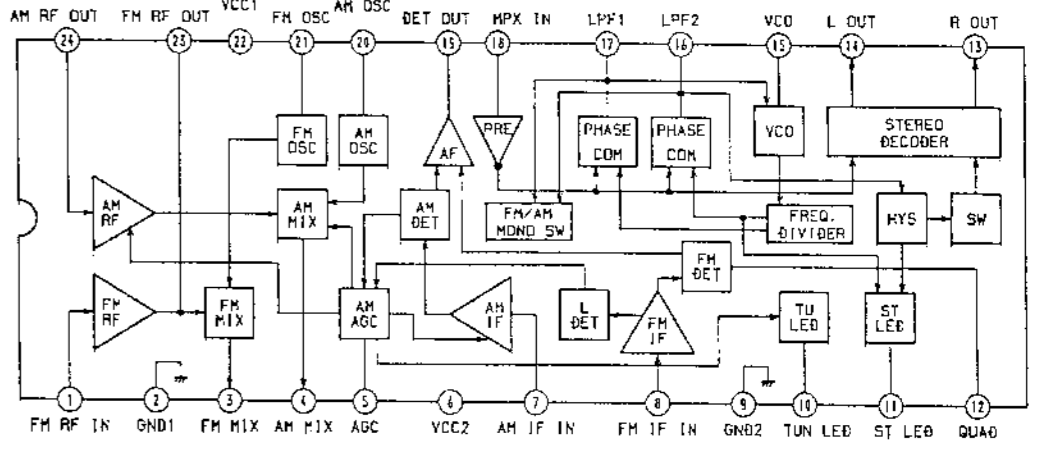
- Voltages are taken with a VOM (input impedance  $10M\Omega$ ). Voltage variations may be noted due to normal production tolerances.

- Signal path:  $\rightarrow$  FM  $\rightarrow$  AM  $\rightarrow$  PB

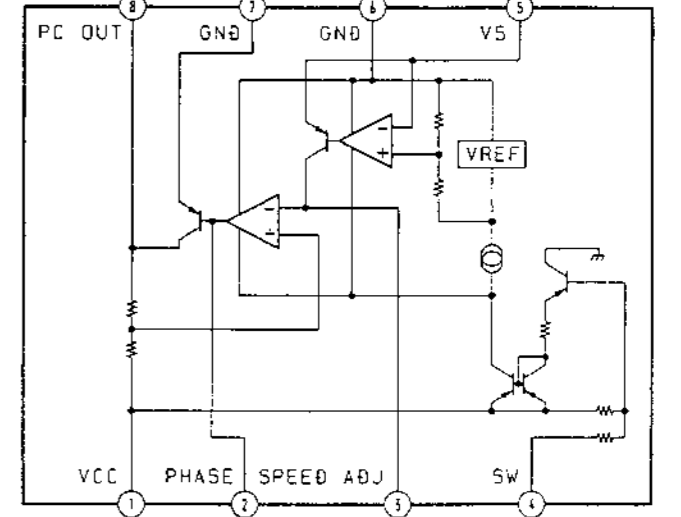
- Abbreviation: CNQ: Canadian model, IT: Italian model, BE: East European model, EA: Saudi Arabia model.

IC Block Diagrams

IC1 TA8122AF (J, TP1)



IC601 MM1038CFF



TOTAL CURRENT  
 FM: 35mA  
 AM: 26mA  
 PLAY: 88mA  
 FF: 115mA  
 REW: 102mA

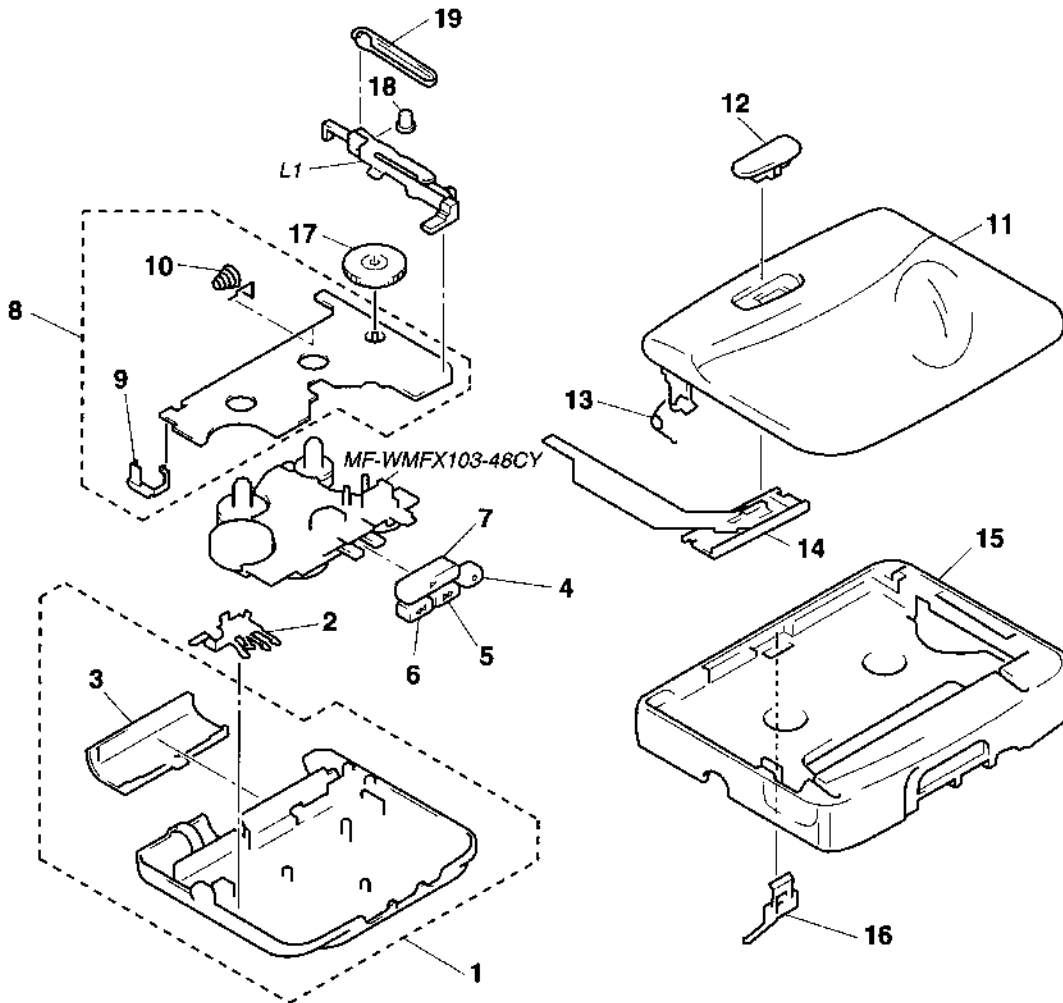
BAY BATTERY SIZE AA  
 (FC DESIGNATION)  
 2PCS. 5V

## SECTION 5 EXPLODED VIEWS

**NOTE:**

- Items marked “\*” are not stocked since they are seldom required for routine service. Some delay should be anticipated when ordering these items.
- Color Indication of Appearance Parts Example:  
KNOB, BALANCE (WHITE)  
↑  
Parts color
- The mechanical parts with no reference number in the exploded views are not supplied.
- Abbreviation  
CND : Canadian model  
IT : Italian model  
EE : East European model  
EA : Saudi Arabia model

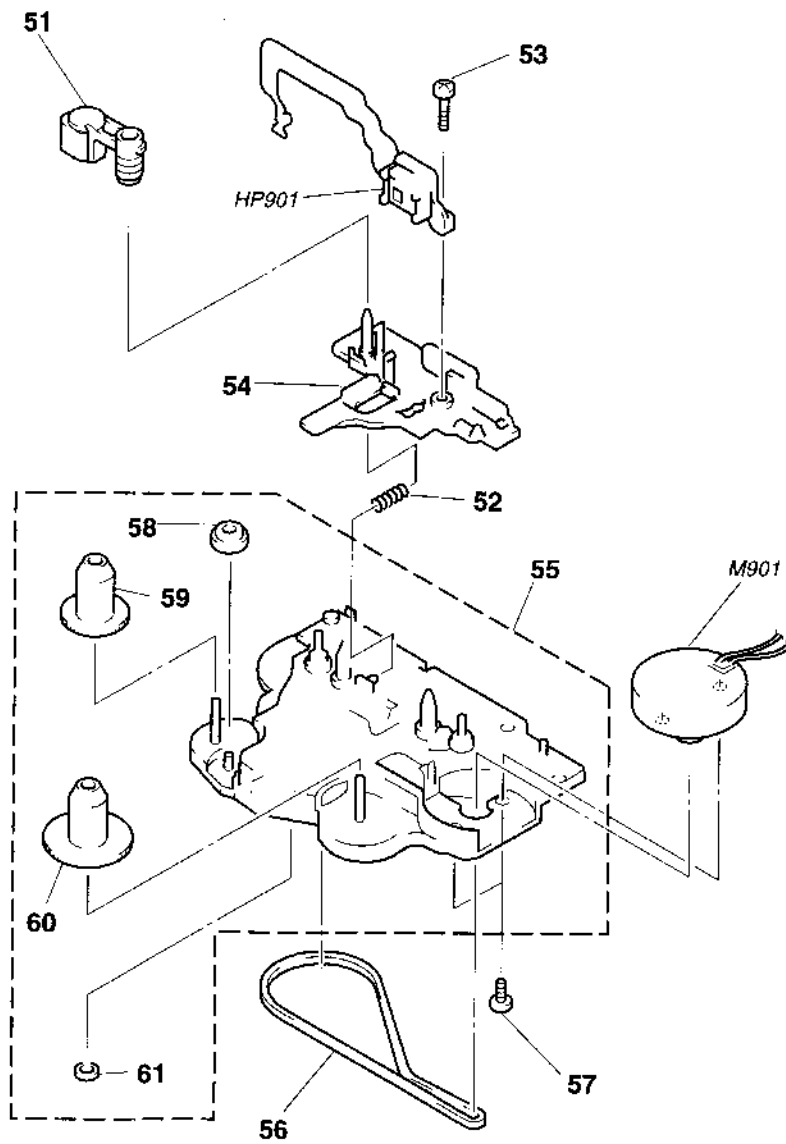
### 5-1. CABINET AND BOARD SECTION



REVISED

| Ref. No. | Part No.     | Description   | Remark | Ref. No. | Part No.                | Description   | Remark |
|----------|--------------|---|--------|----------|-------------------------|---|--------|
| 1        | X-3371-824-1 | CABINET (REAR) SUB ASSY(BLACK)<br>(MADE IN CHINA) (US,CND,E,EA) |        | 11       | X-3371-795-1            | HOLDER (CF-MB) SUB ASSY (BLUE)(AEP,UK,E)            |        |
| 1        | X-3371-825-1 | CABINET (REAR) SUB ASSY (BLUE)<br>(US,CND,AEP,UK,IT,EE,E,EA)    |        | 11       | X-3371-802-1            | HOLDER (CF-MB) SUB ASSY (GREEN)<br>(AEP,UK,E)       |        |
| 1        | X-3371-832-1 | CABINET (REAR) SUB ASSY (GREEN)<br>(US,CND,AEP,UK,IT,EE,E,EA)   |        | 11       | X-3371-803-1            | HOLDER (CF-MB) SUB ASSY (RED)(AEP,UK,E)             |        |
| 1        | X-3371-833-1 | CABINET (REAR) SUB ASSY (RED)<br>(US,CND,AEP,UK,IT,EE,E,EA)     |        | 11       | X-3371-804-1            | HOLDER (CF-MB) SUB ASSY (BLACK)(IT,EA)              |        |
| 1        | X-3371-834-1 | CABINET (REAR) SUB ASSY (BLACK)(AEP,UK,IT)                      |        | 11       | X-3371-805-1            | HOLDER (CF-MB) SUB ASSY (BLUE)(IT,EA)               |        |
| 1        | X-3371-838-1 | CABINET (REAR) SUB ASSY (BLACK)(E,EE)                           |        | 11       | X-3371-806-1            | HOLDER (CF-MB) SUB ASSY (GREEN)(IT,EA)              |        |
| 2        | 3-910-896-01 | GROUND, MOTOR   |        | 11       | X-3371-807-1            | HOLDER (CF-MB) SUB ASSY (RED)(IT,EA)                |        |
| 3        | 3-935-477-01 | LID, BATT (BLACK)   |        | 11       | X-3371-820-1            | HOLDER (CF-MB) SUB ASSY (BLACK)(EE)                 |        |
| 3        | 3-935-477-31 | LID, BATT (GREEN)   |        | 11       | X-3371-821-1            | HOLDER (CF-MB) SUB ASSY (BLUE)(EE)                  |        |
| 3        | 3-935-477-51 | LID, BATT (BLUE)  |        | 11       | X-3371-822-1            | HOLDER (CF-MB) SUB ASSY (GREEN)(EE)                 |        |
| 3        | 3-935-477-61 | LID, BATT (RED)   |        | 11       | X-3371-823-1            | HOLDER (CF-MB) SUB ASSY (RED)(EE)                   |        |
| 4        | 3-933-647-01 | BUTTON (STOP)   |        | 12       | 3-933-649-01            | KNOB (MB)   |        |
| 5        | 3-933-644-01 | BUTTON (FF)   |        | 13       | 3-922-628-01            | SPRING, TORSION                                     |        |
| 6        | 3-933-643-01 | BUTTON (REW)  |        | 14       | <del>1-467-600-21</del> | MEGA BASS UNIT (SW)                                 |        |
| 7        | 3-933-646-01 | BUTTON (PLAY)   |        | 15       | 3-933-685-01            | CABINET (FRONT)(CF-O)(BLACK)<br>(AEP,UK,E,IT,EE,EA) |        |
| 8        | A-3016-812-A | MAIN BOARD, COMPLETE (US,CND)                                   |        | 15       | 3-933-685-11            | CABINET (FRONT)(CF-O)(BLUE)(AEP,UK,E,IT,EE,EA)      |        |
| 8        | A-3016-813-A | MAIN BOARD, COMPLETE (AEP,UK)                                   |        | 15       | 3-933-685-21            | CABINET (FRONT)(CF-O)(GREEN)<br>(AEP,UK,E,IT,EE,EA) |        |
| 8        | A-3016-814-A | MAIN BOARD, COMPLETE (IT)                                       |        | 15       | 3-933-685-31            | CABINET (FRONT)(CF-O)(RED)(AEP,UK,E,IT,EE,EA)       |        |
| 8        | A-3016-815-A | MAIN BOARD, COMPLETE (EE)                                       |        | 15       | 3-933-685-51            | CABINET (FRONT)(CF-O)(BLACK)(US,CND)                |        |
| 8        | A-3016-816-A | MAIN BOARD, COMPLETE (E)  |        | 15       | 3-933-685-61            | CABINET (FRONT)(CF-O)(BLUE)(US,CND)                 |        |
| 8        | A-3016-817-A | MAIN BOARD, COMPLETE (EA)                                       |        | 15       | 3-933-685-71            | CABINET (FRONT)(CF-O)(GREEN)(US,CND)                |        |
| 9        | 3-933-642-01 | TERMINAL (+), BATTERY   |        | 15       | 3-933-685-81            | CABINET (FRONT)(CF-O)(RED)(US,CND)                  |        |
| 10       | 3-910-895-01 | TERMINAL (-), BATTERY   |        | 16       | 3-364-675-01            | SPRING (CASSETTE)                                   |        |
| 11       | X-3371-790-1 | HOLDER (CF-MB) SUB ASSY (BLACK)(US,CND)                         |        | 17       | 3-910-902-01            | KNOB (TUNE)   |        |
| 11       | X-3371-791-1 | HOLDER (CF-MB) SUB ASSY (BLUE)(US,CND)                          |        | 18       | 3-933-675-01            | GEAR (TUNE)   |        |
| 11       | X-3371-792-1 | HOLDER (CF-MB) SUB ASSY (GREEN)(US,CND)                         |        | 19       | 3-933-678-01            | POINTER   |        |
| 11       | X-3371-793-1 | HOLDER (CF-MB) SUB ASSY (RED)(US,CND)                           |        | L1       | X-3371-847-1            | FERRITE BAR ANTENNA SUB ASSY                        |        |
| 11       | X-3371-794-1 | HOLDER (CF-MB) SUB ASSY (BLACK)(AEP,UK,E)                       |        |          |                         |   |        |

5-2. MECHANISM SECTION (MF-WMFX103-48CY)



| Ref. No. | Part No.     | Description                | Remark | Ref. No. | Part No.     | Description               | Remark |
|----------|--------------|----------------------------|--------|----------|--------------|---------------------------|--------|
| 51       | X-3367-902-1 | ARM (N) ASSY, PINCH        |        | 58       | 3-909-727-01 | GEAR (REVERSE)            |        |
| 52       | 3-364-328-01 | SPRING, COMPRESSION        |        | 59       | 3-364-320-01 | GEAR (S REEL)             |        |
| 53       | 3-910-635-01 | SCREW                      |        | 60       | 3-910-640-01 | GEAR (T REEL)             |        |
| 54       | 3-910-647-01 | LEVER (PR/O), PLAY         |        | 61       | 3-321-483-11 | RING, RETAINING           |        |
| 55       | X-3368-729-1 | CHASSIS ASSY               |        | HP901    | 1-500-115-11 | HEAD, MAGNETIC (PLAYBACK) |        |
| 56       | 3-354-868-11 | BELT                       |        | M901     | 1-698-353-11 | MOTOR, DC (REEL CAPSTAN)  |        |
| 57       | 3-352-758-21 | SCREW (M1.7), TOOTHED LOCK |        |          |              |                           |        |

**SECTION 6  
ELECTRICAL PARTS LIST**

**Note:**

- Due to standardization, replacements in the parts list may be different from the parts specified in the diagrams or the components used on the set.
- -XX, -X mean standardized parts, so they may have some difference from the original one.
- Items marked "\*" are not stocked since they are seldom required for routine service. Some delay should be anticipated when ordering these items.
- RESISTORS  
All resistors are in ohms  
METAL: Metal-film resistor  
METAL OXIDE: Metal Oxide-film resistor  
F: nonflammable

- SEMICONDUCTORS  
In each case, u:  $\mu$ , for example:  
uA...:  $\mu$  A..., uPA...:  $\mu$  PA..., uPB...:  $\mu$  PB...,  
uPC...:  $\mu$  PC..., uPD...:  $\mu$  PD...
- CAPACITORS  
uF:  $\mu$  F
- COILS  
uH:  $\mu$  H

- Abbreviation  
CND: Canadian model  
IT : Italian model  
EE : East European model  
EA : Saudi Arabia model

| Ref. No. | Part No.      | Description                            | Remark                             | Ref. No. | Part No.     | Description           | Remark                     |
|----------|---------------|--|------------------------------------|----------|--------------|-----------------------|----------------------------|
|          | A-3016-812-A  | MAIN BOARD, COMPLETE (US,CND)<br>***** |                                    | C8       | 1-163-038-91 | CERAMIC CHIP 0.1uF    | 25V                        |
|          | A-3016-813-A  | MAIN BOARD, COMPLETE (AEP,UK)<br>***** |                                    | C9       | 1-163-038-91 | CERAMIC CHIP 0.1uF    | 25V                        |
|          | A-3016-814-A  | MAIN BOARD, COMPLETE (IT)<br>*****     |                                    | C10      | 1-163-038-91 | CERAMIC CHIP 0.1uF    | 25V                        |
|          | A-3016-815-A  | MAIN BOARD, COMPLETE (EE)<br>*****     |                                    | C12      | 1-163-117-00 | CERAMIC CHIP 100PF    | 5% 50V                     |
|          | A-3016-816-A  | MAIN BOARD, COMPLETE (E)<br>*****      |                                    | C13      | 1-163-097-00 | CERAMIC CHIP 15PF     | 5% 50V                     |
|          | A-3016-817-A  | MAIN BOARD, COMPLETE (EA)<br>*****     |                                    | C14      | 1-126-153-11 | ELECT 22uF            | 20% 6.3V                   |
|          | 3-910-895-01  | TERMINAL (-), BATTERY                  |                                    | C15      | 1-163-078-11 | CERAMIC CHIP 0.033uF  | 10% 25V                    |
|          | 3-933-642-01  | TERMINAL (+), BATTERY                  |                                    | C16      | 1-163-063-91 | CERAMIC CHIP 0.022uF  | 10% 50V                    |
|          | < CAPACITOR > |  |                                    | C17      | 1-126-154-11 | ELECT 47uF            | 20% 6.3V                   |
| C1       | 1-163-086-00  | CERAMIC CHIP 3PF                       | 50V<br>(US,CND,AEP,UK,E)           | C18      | 1-163-024-00 | CERAMIC CHIP 0.018uF  | 10% 50V                    |
| C1       | 1-163-089-00  | CERAMIC CHIP 6PF                       | 50V<br>(IT,EE,EA)                  | C18      | 1-164-232-11 | CERAMIC CHIP 0.01uF   | 50V<br>(AEP,UK,IT,EE,E,EA) |
| C2       | 1-163-091-00  | CERAMIC CHIP 8PF                       | 50V<br>(EE)                        | C19      | 1-163-024-00 | CERAMIC CHIP 0.018uF  | 10% 50V<br>(US,CND)        |
| C2       | 1-163-100-00  | CERAMIC CHIP 20PF                      | 5% 50V<br>(US,CND,AEP,UK,E)        | C19      | 1-164-232-11 | CERAMIC CHIP 0.01uF   | 50V<br>(AEP,UK,IT,EE,E,EA) |
| C2       | 1-163-103-00  | CERAMIC CHIP 27PF                      | 5% 50V<br>(IT,EA)                  | C22      | 1-163-009-11 | CERAMIC CHIP 0.001uF  | 10% 50V                    |
| C3       | 1-163-092-00  | CERAMIC CHIP 9PF                       | 0.25PF 50V<br>(EE)                 | C23      | 1-163-009-11 | CERAMIC CHIP 0.001uF  | 10% 50V                    |
| C3       | 1-163-096-00  | CERAMIC CHIP 13PF                      | 5% 50V<br>(IT,EA)                  | C24      | 1-164-234-11 | CERAMIC CHIP 1uF      | 10V                        |
| C3       | 1-163-101-00  | CERAMIC CHIP 22PF                      | 5% 50V<br>(US,CND,AEP,UK,E)        | C25      | 1-163-009-11 | CERAMIC CHIP 0.001uF  | 10% 50V                    |
| C4       | 1-163-092-00  | CERAMIC CHIP 9PF                       | 0.25PF 50V<br>(US,CND,AEP,UK,E,EE) | C101     | 1-163-007-11 | CERAMIC CHIP 680PF    | 10% 50V                    |
| C4       | 1-163-096-00  | CERAMIC CHIP 13PF                      | 5% 50V<br>(IT,EA)                  | C103     | 1-163-017-00 | CERAMIC CHIP 0.0047uF | 5% 50V                     |
| C5       | 1-163-117-00  | CERAMIC CHIP 100PF                     | 5% 50V<br>(EE)                     | C104     | 1-126-157-11 | ELECT 10uF            | 20% 16V                    |
| C5       | 1-163-239-11  | CERAMIC CHIP 33PF                      | 5% 50V<br>(US,CND,AEP,UK,E)        | C105     | 1-164-234-11 | CERAMIC CHIP 1uF      | 10V                        |
| C6       | 1-163-003-11  | CERAMIC CHIP 330PF                     | 10% 50V                            | C106     | 1-164-009-11 | CERAMIC CHIP 0.001uF  | 10% 50V                    |
| C7       | 1-164-005-11  | CERAMIC CHIP 0.47uF                    | 25V                                | C107     | 1-164-234-11 | CERAMIC CHIP 1uF      | 10V                        |
|          |               |  |                                    | C108     | 1-163-008-11 | CERAMIC CHIP 0.001uF  | 10% 50V                    |
|          |               |  |                                    | C201     | 1-163-007-11 | CERAMIC CHIP 680PF    | 10% 50V                    |
|          |               |  |                                    | C203     | 1-163-017-00 | CERAMIC CHIP 0.0047uF | 5% 50V                     |
|          |               |  |                                    | C204     | 1-126-157-11 | ELECT 10uF            | 20% 16V                    |
|          |               |  |                                    | C205     | 1-164-234-11 | CERAMIC CHIP 1uF      | 10V                        |
|          |               |  |                                    | C206     | 1-164-009-11 | CERAMIC CHIP 0.001uF  | 10% 50V                    |
|          |               |  |                                    | C207     | 1-164-234-11 | CERAMIC CHIP 1uF      | 10V                        |
|          |               |  |                                    | C208     | 1-163-009-11 | CERAMIC CHIP 0.001uF  | 10% 50V                    |
|          |               |  |                                    | C302     | 1-163-038-91 | CERAMIC CHIP 0.1uF    | 25V                        |
|          |               |  |                                    | C303     | 1-126-153-11 | ELECT 22uF            | 20% 6.3V                   |
|          |               |  |                                    | C304     | 1-164-222-11 | CERAMIC CHIP 0.22uF   | 25V                        |
|          |               |  |                                    | C305     | 1-126-153-11 | ELECT 22uF            | 20% 6.3V                   |
|          |               |  |                                    | C306     | 1-164-234-11 | CERAMIC CHIP 1uF      | 10V                        |
|          |               |  |                                    | C308     | 1-126-162-11 | ELECT 3.3uF           | 20% 50V                    |
|          |               |  |                                    | C309     | 1-163-809-11 | CERAMIC CHIP 0.047uF  | 10% 25V                    |



| Ref. No. | Part No.     | Description  | Remark  | Ref. No. | Part No. | Description  | Remark                                      |                                    |    |                                |
|----------|--------------|--|---------|----------|----------|--------------|---|------------------------------------|----|--------------------------------|
| C310     | 1-164-234-11 | CERAMIC CHIP   | 1uF     | 10V      | JR4      | 1-216-295-91 | CONDUCTOR, CHIP(2012)(IT,EA)                |                                    |    |                                |
| C311     | 1-164-005-11 | CERAMIC CHIP   | 0.47uF  | 25V      | JR5      | 1-216-295-91 | CONDUCTOR, CHIP(2012)(US,CND)               |                                    |    |                                |
| C312     | 1-163-809-11 | CERAMIC CHIP   | 0.047uF | 10%      | 25V      | JR6          | 1-216-295-91                                | CONDUCTOR, CHIP(2012)              |    |                                |
| C313     | 1-164-234-11 | CERAMIC CHIP   | 1uF     | 10V      | JR7      | 1-216-295-91 | CONDUCTOR, CHIP(2012)                       |                                    |    |                                |
| C314     | 1-164-234-11 | CERAMIC CHIP   | 1uF     | 10V      |          |              |   |                                    |    |                                |
| C315     | 1-104-847-11 | TANTAL. CHIP   | 22uF    | 20%      | 4V       |              | < COIL >                                    |                                    |    |                                |
| C316     | 1-163-117-00 | CERAMIC CHIP   | 100PF   | 5%       | 50V      | L2           | 1-426-578-11                                | COIL (WITH CORE) (RF) (EE)         |    |                                |
| C318     | 1-163-009-11 | CERAMIC CHIP   | 0.001uF | 10%      | 50V      | L2           | 1-460-120-11                                | COIL (WITH CORE) (US,CND,AEP,UK,E) |    |                                |
| C319     | 1-163-009-11 | CERAMIC CHIP   | 0.001uF | 10%      | 50V      | L2           | 1-460-124-11                                | COIL (WITH CORE) (IT,EA)           |    |                                |
| C321     | 1-163-117-00 | CERAMIC CHIP   | 100PF   | 5%       | 50V      | L3           | 1-403-697-11                                | COIL (WITH CORE) (IT,EA)           |    |                                |
| C322     | 1-163-117-00 | CERAMIC CHIP   | 100PF   | 5%       | 50V      | L3           | 1-409-655-11                                | COIL (WITH CORE) (EE)              |    |                                |
| C328     | 1-163-038-91 | CERAMIC CHIP   | 0.1uF   | 25V      | L3       | 1-411-859-11 | COIL (WITH CORE) (OSC)(US,CND,AEP,UK,E)     |                                    |    |                                |
| C329     | 1-163-038-91 | CERAMIC CHIP   | 0.1uF   | 25V      | L4       | 1-406-408-11 | COIL (OSC) (US,CND,AEP,UK,E)                |                                    |    |                                |
| C601     | 1-124-434-00 | ELECT  | 220uF   | 20%      | 4V       | L4           | 1-406-409-11                                | COIL (OSC) (IT,EE,EA)              |    |                                |
| C602     | 1-164-005-11 | CERAMIC CHIP   | 0.47uF  | 25V      | L101     | 1-500-245-11 | BEAD,FERRITE                                |                                    |    |                                |
| C603     | 1-164-505-11 | CERAMIC CHIP   | 2.2uF   | 16V      | L201     | 1-500-245-11 | BEAD,FERRITE                                |                                    |    |                                |
| C604     | 1-163-009-11 | CERAMIC CHIP   | 0.001uF | 10%      | 50V      | L301         | 1-412-006-31                                | INDUCTOR CHIP 10uH                 |    |                                |
|          |              | < FILTER >   |         |          |          |              | < TRANSISTOR >                              |                                    |    |                                |
| CF1      | 1-577-072-11 | FILTER, CERAMIC  |         |          | Q2       | 8-729-102-77 | TRANSISTOR 2SA812-T2M7                      |                                    |    |                                |
| CF2      | 1-567-097-61 | FILTER, CERAMIC  |         |          | Q101     | 8-729-207-65 | TRANSISTOR RN1410                           |                                    |    |                                |
|          |              | < CONNECTOR >  |         |          | Q201     | 8-729-207-65 | TRANSISTOR RN1410                           |                                    |    |                                |
| CN301    | 1-569-252-21 | HOUSING, CONNECTOR (FPC) 5P                                |         |          | Q301     | 8-729-230-49 | TRANSISTOR 2SC2712-YG                       |                                    |    |                                |
| * CN302  | 1-750-092-11 | HOUSING, CONNECTOR 3P                                      |         |          |          |              | < RESISTOR >                                |                                    |    |                                |
|          |              | < COMPOSITION CIRCUIT BLOCK >                              |         |          | R1       | 1-216-009-00 | METAL CHIP                                  | 22                                 | 5% | 1/10W                          |
| CP1      | 1-236-711-21 | FILTER, BAND PASS (AEP,UK,IT,E,EA)                         |         |          | R2       | 1-216-081-00 | METAL CHIP                                  | 22K                                | 5% | 1/10W                          |
| CP1      | 1-239-813-21 | FILTER, BAND PASS (EE)                                     |         |          | R3       | 1-216-077-00 | METAL CHIP                                  | 15K                                | 5% | 1/10W                          |
|          |              | < TRIMMER >  |         |          | R4       | 1-216-077-00 | METAL CHIP                                  | 15K                                | 5% | 1/10W                          |
| CT1-4    | 1-151-692-21 | CAP. VAR (TUNING)(EE)                                      |         |          | R5       | 1-216-065-00 | METAL CHIP                                  | 4.7K                               | 5% | 1/10W                          |
| CV1-4    |              |  |         |          | R6       | 1-216-065-00 | METAL CHIP                                  | 4.7K                               | 5% | 1/10W                          |
| CT1-4    | 1-151-629-31 | CAP. VAR, POLYETHYLENE (TUNING)<br>(US,CND,AEP,UK,IT,E,EA) |         |          | R7       | 1-216-037-00 | METAL CHIP                                  | 330                                | 5% | 1/10W                          |
| CV1-4    |              |  |         |          | R8       | 1-216-001-00 | METAL CHIP                                  | 10                                 | 5% | 1/10W                          |
|          |              | < IC >   |         |          | R103     | 1-216-077-00 | METAL CHIP                                  | 15K                                | 5% | 1/10W                          |
| IC1      | 8-759-230-39 | IC TA8122AF  |         |          | R104     | 1-216-077-00 | METAL CHIP                                  | 15K                                | 5% | 1/10W                          |
| IC301    | 8-759-285-29 | IC LA4582CM  |         |          | R105     | 1-216-117-00 | METAL CHIP                                  | 680K                               | 5% | 1/10W                          |
| IC601    | 8-759-334-24 | IC MM1038CFF   |         |          | R106     | 1-216-043-91 | METAL GLAZE                                 | 560                                | 5% | 1/10W                          |
|          |              | < JACK >   |         |          | R107     | 1-216-295-91 | CONDUCTOR, CHIP (2012)                      |                                    |    | (US,CND,AEP,UK,IT,EE)          |
| J301     | 1-750-061-11 | JACK,DC(POLARITY UNIFIED TYPE)(DC IN 3V)                   |         |          | R107     | 1-216-313-00 | METAL CHIP                                  | 8.2                                | 5% | 1/10W<br>(E,EA)                |
| J302     | 1-565-287-11 | JACK (??)  |         |          | R109     | 1-216-095-00 | METAL CHIP                                  | 82K                                | 5% | 1/10W<br>(E,EA)                |
|          |              | < JUMPER RESISTOR >  |         |          | R109     | 1-216-107-00 | METAL CHIP                                  | 270K                               | 5% | 1/10W<br>(US,CND,AEP,UK,IT,EE) |
| JR1      | 1-216-295-91 | CONDUCTOR, CHIP(2012)(US,CND)                              |         |          | R203     | 1-216-077-00 | METAL CHIP                                  | 15K                                | 5% | 1/10W                          |
| JR2      | 1-216-295-91 | CONDUCTOR, CHIP(2012)(AEP,UK,IT,EE,E,EA)                   |         |          | R204     | 1-216-077-00 | METAL CHIP                                  | 15K                                | 5% | 1/10W                          |
| JR3      | 1-216-295-91 | CONDUCTOR, CHIP(2012)(AEP,UK,IT,EE,E,EA)                   |         |          | R205     | 1-216-117-00 | METAL CHIP                                  | 680K                               | 5% | 1/10W                          |
|          |              |  |         |          | R206     | 1-216-043-91 | METAL GLAZE                                 | 560                                | 5% | 1/10W                          |
|          |              |  |         |          | R207     | 1-216-295-91 | CONDUCTOR, CHIP (2012)(US,CND,AEP,UK,IT,EE) |                                    |    |                                |

REVISED

MAIN

| Ref. No.              | Part No.     | Description                           | Remark                              |
|-----------------------|--------------|---------------------------------------|-------------------------------------|
| R207                  | 1-216-313-00 | METAL CHIP                            | 8.2 5% 1/10W (E,EA)                 |
| R209                  | 1-216-095-00 | METAL CHIP                            | 82K 5% 1/10W (E,EA)                 |
| R209                  | 1-216-107-00 | METAL CHIP                            | 270K 5% 1/10W (US,CND,AEP,UK,IT,EE) |
| R305                  | 1-216-081-00 | METAL CHIP                            | 22K 5% 1/10W                        |
| R306                  | 1-216-077-00 | METAL CHIP                            | 15K 5% 1/10W                        |
| R308                  | 1-216-077-00 | METAL CHIP                            | 15K 5% 1/10W                        |
| R309                  | 1-216-113-00 | METAL CHIP                            | 470K 5% 1/10W                       |
| R320                  | 1-216-089-91 | METAL GLAZE                           | 47K 5% 1/10W                        |
| R601                  | 1-217-905-11 | METAL GLAZE                           | 1.5 5% 1/10W                        |
| R602                  | 1-217-905-11 | METAL GLAZE                           | 1.5 5% 1/10W                        |
| R603                  | 1-216-043-91 | METAL GLAZE                           | 560 5% 1/10W                        |
| < VARIABLE RESISTOR > |              |                                       |                                     |
| RV301                 | 1-223-609-21 | RES, VAR, CARBON 10K/10K (VOLUME)     |                                     |
| RV601                 | 1-225-252-21 | RES, ADJ, CARBON 470                  |                                     |
| < SWITCH >            |              |                                       |                                     |
| S302                  | 1-571-986-11 | SWITCH, LEAF (TAPE POWER SW)          |                                     |
| S303                  | 1-692-298-11 | SWITCH, SLIDE (NORM,CrO2/METAL)       |                                     |
| S304                  | 1-692-299-11 | SWITCH, SLIDE (TAPE(RADIO OFF),AM,FM) |                                     |
| S305                  | 1-692-898-11 | SWITCH, SLIDE (AVLS)                  |                                     |
| < TRANSFORMER >       |              |                                       |                                     |
| T1                    | 1-404-949-11 | TRANSFORMER, IF                       |                                     |
| < THERMISTOR >        |              |                                       |                                     |
| TH601                 | 1-809-279-11 | THERMISTOR, POSITIVE                  |                                     |
| TH602                 | 1-810-764-11 | THERMISTOR, POSITIVE                  |                                     |
| < VIBRATOR >          |              |                                       |                                     |
| X1                    | 1-577-091-21 | OSCILLATOR, CERAMIC (19KHz)           |                                     |
| X2                    | 1-567-097-61 | FILTER, CERAMIC (10.7MHz)             |                                     |

\*\*\*\*\*  
MISCELLANEOUS  
\*\*\*\*\*

|       |              |                              |
|-------|--------------|------------------------------|
| 14    | 1-467-600-21 | MEGA BASS UNIT (SW)          |
| HP901 | 1-500-115-11 | HEAD, MAGNETIC (PLAYBACK)    |
| L1    | X-3371-847-1 | FERRITE BAR ANTENNA SUB ASSY |
| M901  | 1-698-353-11 | MOTOR, DC (REEL/CAPSTAN)     |

| Ref. No.                                 | Part No.     | Description   | Remark |
|--|--------------|---|--------|
| ACCESSORIES & PACKING MATERIALS<br>***** |              |   |        |
|  | 1-504-228-11 | HEADPHONE (MDR-013)(US,CND,AEP,UK,IT,EE)  |        |
|  | 3-810-696-11 | MANUAL, INSTRUCTION (ENGLISH)(US,CND)   |        |
|  | 3-810-696-21 | MANUAL, INSTRUCTION (FRENCH)(CND)   |        |
|  | 3-810-696-31 | MANUAL, INSTRUCTION (Printed in CHINA)<br>(ENGLISH,FRENCH,GERMAN,SPANISH,DUTCH,<br>SWEDISH,ITALIAN,PORTUGUESE)(AEP,UK,IT) |        |
|  | 3-810-696-41 | MANUAL, INSTRUCTION<br>(ENGLISH,FRENCH,GERMAN,SPANISH,DUTCH,<br>SWEDISH,ITALIAN,PORTUGUESE)(AEP,UK)                       |        |
|  | 3-810-696-51 | MANUAL, INSTRUCTION (Printed in CHINA)<br>(ENGLISH,SPANISH,CHINESE,KOREAN)(E,EA)  |        |
|  | 3-810-696-61 | MANUAL, INSTRUCTION<br>(ENGLISH,SPANISH,CHINESE,KOREAN)(E)  |        |
|  | 3-810-696-71 | MANUAL, INSTRUCTION<br>(ENGLISH,POLISH,HUNGARIAN,RUSSIAN)(EE)   |        |
| *  | 3-910-200-01 | CUSHION (AEP,UK,IT,EE)  |        |
| *  | 3-910-312-01 | CUSHION (E,EA)  |        |
| *  | 3-932-290-01 | INDIVIDUAL CARTON (AEP,UK,IT,EE)  |        |
| *  | 3-932-291-01 | INDIVIDUAL CARTON (E,EA)  |        |
|  | 8-953-130-90 | HEADPHONE MDR-E801//K SET (E,EA)  |        |
|  | X-3372-109-1 | CLIP, BELT ASSY   |        |