

WM-F22

SERVICE MANUAL

AEP Model
UK Model



SPECIFICATIONS

Tape Transport Mechanism Type	MF-WMF12
-------------------------------	----------

Radio section

Frequency range: FM: 87.6–107 MHz
AM: 530–1,605 kHz

Antenna: FM: Headphone cord antenna
AM: Built-in ferrite bar antenna

Tape player section and general

Tape track: 4-track 2-channel stereo

Fast winding time: Approx. 3 min. with Sony cassette C-60

Frequency response

40–15,000 Hz (with the TAPE selector set to METAL/CrO₂)

40–15,000 Hz (with the TAPE selector set to NORM)

Power output

25 mW x 2 (max.)

20 mW x 2 (at 10% harmonic distortion) load impedance 32 ohms at dc operation

Power requirements: 3V dc, two size AA batteries (IEC designation R6)

Battery life:

Batteries	FM reception	Tape playback	(hours)
Sony New Super SUM-3 (NS)	15	3	
Sony Eveready AM3 alkaline	30	7	

For maximum performance we recommend the use of alkaline batteries.

Dimensions: Approx. 93.5 x 142.5 x 40 mm (w/h/d)
(3³/₄ x 5⁵/₈ x 1⁵/₈ inches)

incl. projecting parts and controls

Approx. 87.5 x 141.5 x 40 mm (w/h/d)

(3¹/₂ x 5⁵/₈ x 1⁵/₈ inches)

not incl. projecting parts and controls

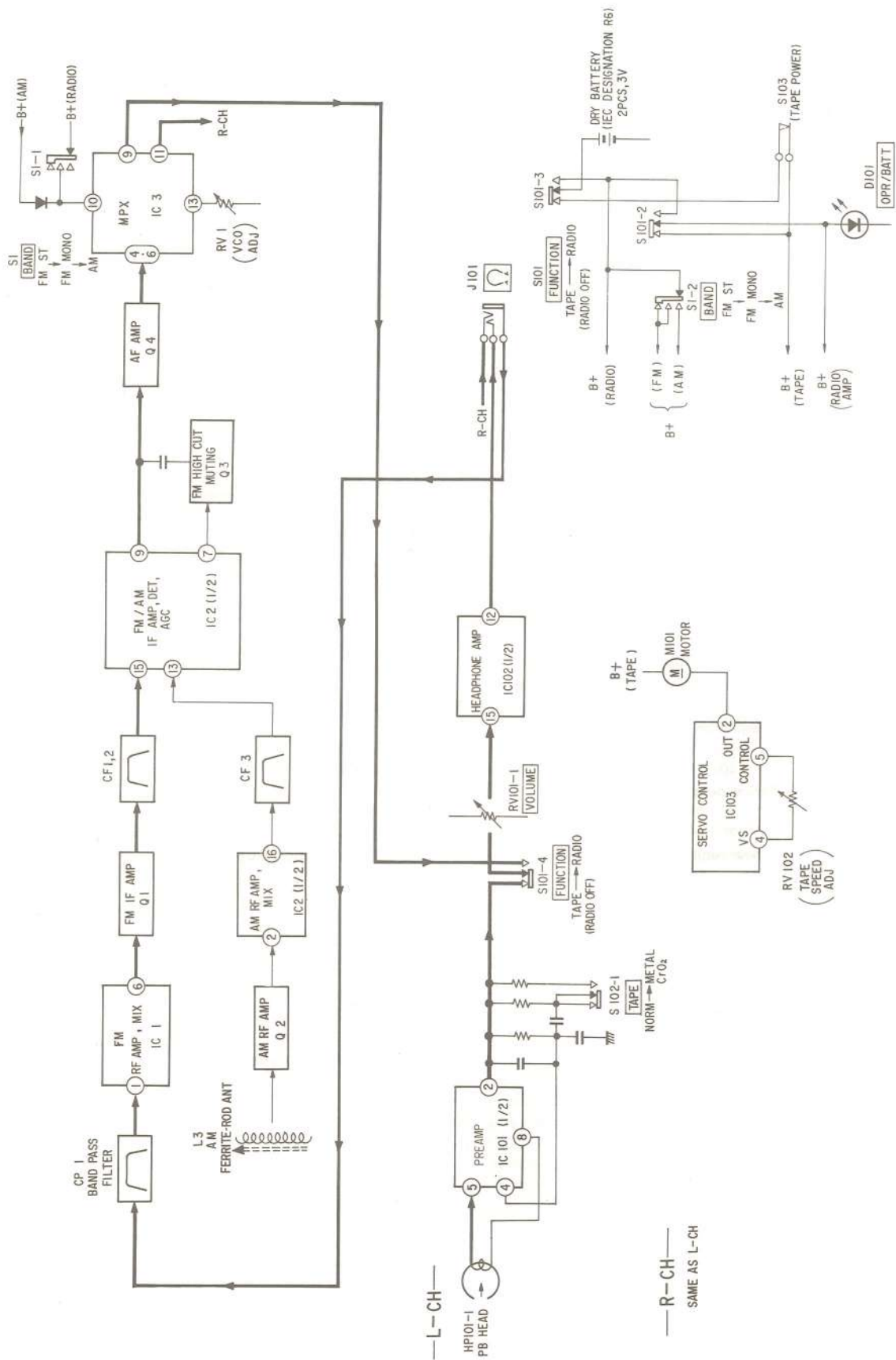
Weight: Approx. 330 g (11.6 oz) incl. batteries, not incl. other accessories

FM/AM STEREO
CASSETTE PLAYER
SONY®

TC



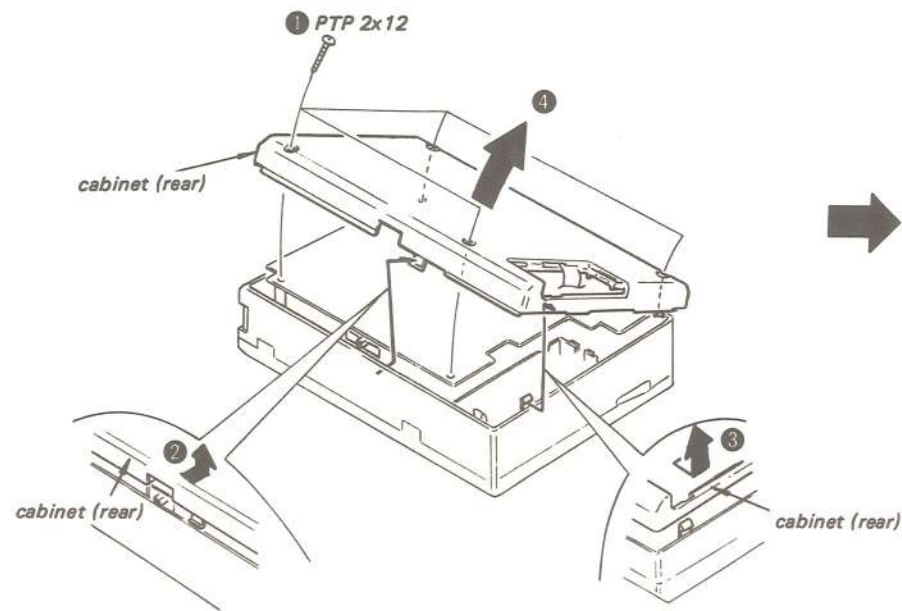
SECTION 1
BLOCK DIAGRAM



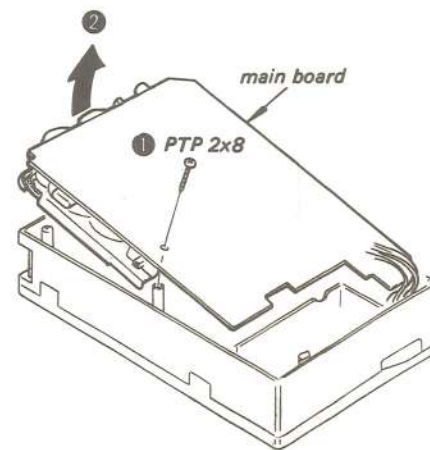
SECTION 2
DISASSEMBLY

Note: Follow the disassembly procedure in the numerical order given.

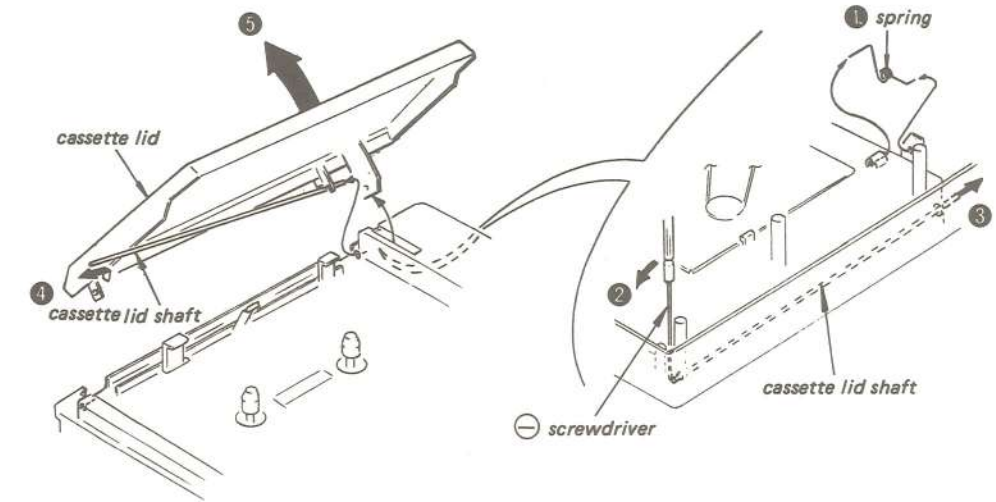
CABINET (REAR)



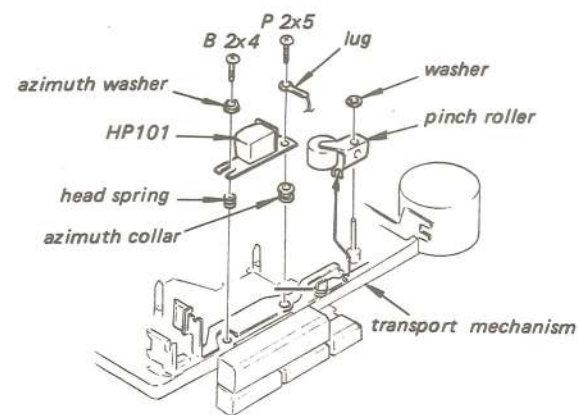
MAIN BOARD



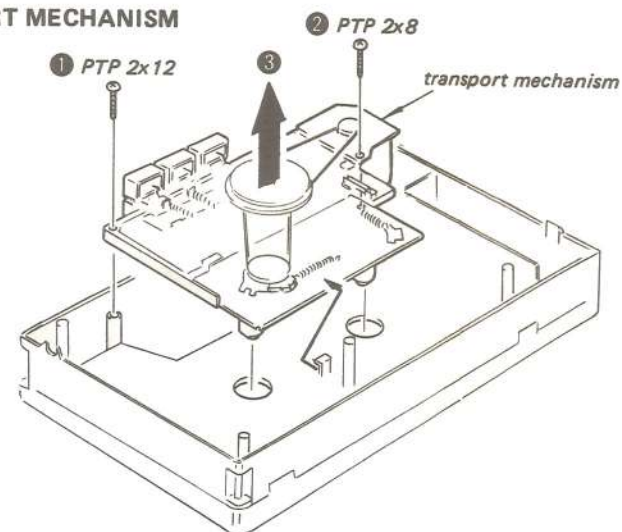
CASSETTE WINDOW



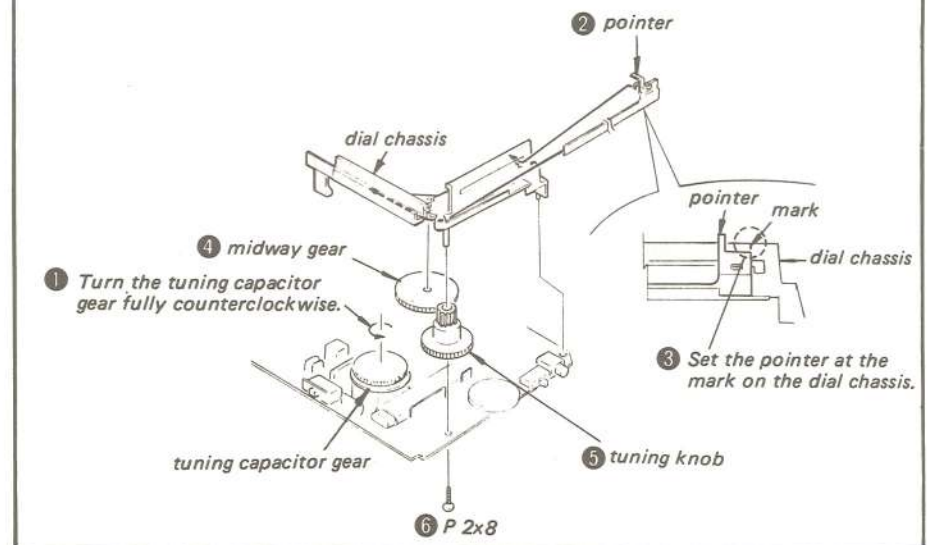
HP101, PINCH ROLLER



TRANSPORT MECHANISM



POINTER SETTING



SECTION 3
ADJUSTMENTS

3-1. MECHANICAL ADJUSTMENTS

PRECAUTION

- Clean the following parts with a denatured-alcohol-moistened swab:

playback head	pinch roller
capstan	idlers
rubber belts	
- Demagnetize the playback head with a head demagnetizer.
- Do not use a magnetized screwdriver for the adjustments.
- After the adjustments, apply suitable locking compound to the parts adjusted.
- The adjustments should be performed with the rated power supply voltage unless otherwise noted.

Torque Measurement

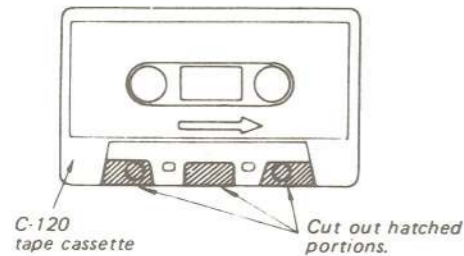
Torque	Meter Reading	Torque Meter
Forward	22-55 g·cm (0.31-0.77 oz·inch)	CQ-102C
Fast Forward and Rewind	more than 55 g·cm (more than 0.77 oz·inch)	CQ-201B
Back Tension	1-4 g·cm (0.014-0.056 oz·inch)	CQ-102C

Tape Tension Measurement

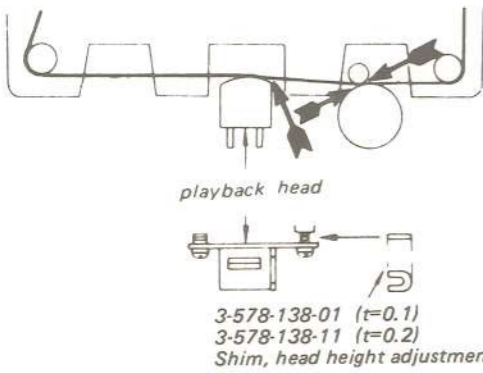
Meter	Meter Reading
CQ-403A	more than 80 g (2.82 oz)

Head Height Adjustment

- Prepare an adjustment cassette as shown below.



- In playback mode and viewing from the front, adjust the head heights to eliminate tape curl and tape twist at portions shown by arrow.



3-2. ELECTRICAL ADJUSTMENTS

CASSETTE Section

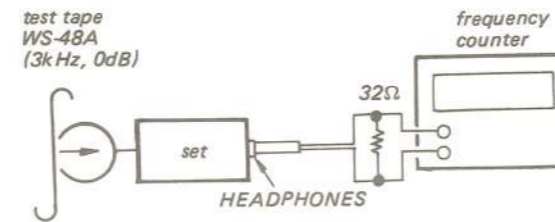
Tape Speed Adjustment

Setting:

VOL control: mechanical mid

Procedure:

Mode: playback

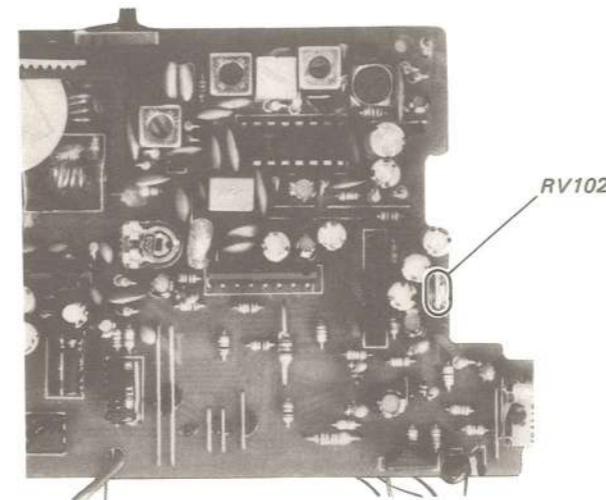


Specifications:

Digital frequency counter
2,990 - 3,010Hz

Frequency difference between beginning and end of tape should be within $\pm 2\%$ (60Hz).

Adjustment Location: main board

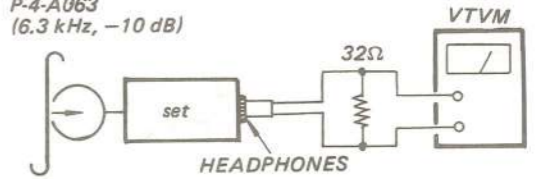


Playback Head Azimuth Adjustment

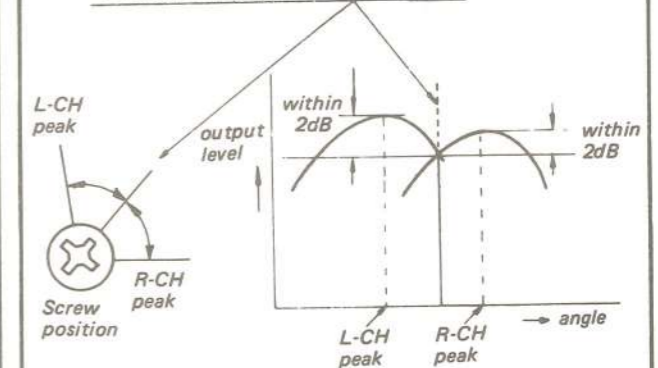
Procedure:

- Mode: playback

test tape P-4-A063 (6.3 kHz, -10 dB)



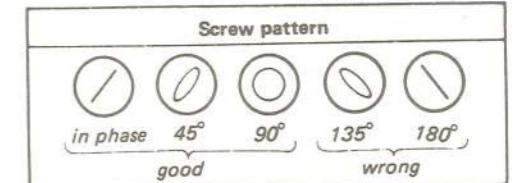
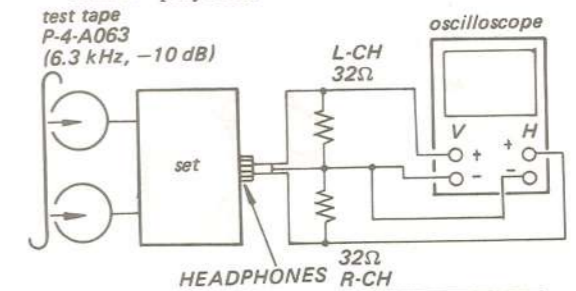
- Turn the adjustment screw for the maximum output levels. If these levels do not match, turn the adjustment screw until both of output levels match together within 2dB.



- Phase Check

Mode: playback

test tape P-4-A063 (6.3 kHz, -10 dB)



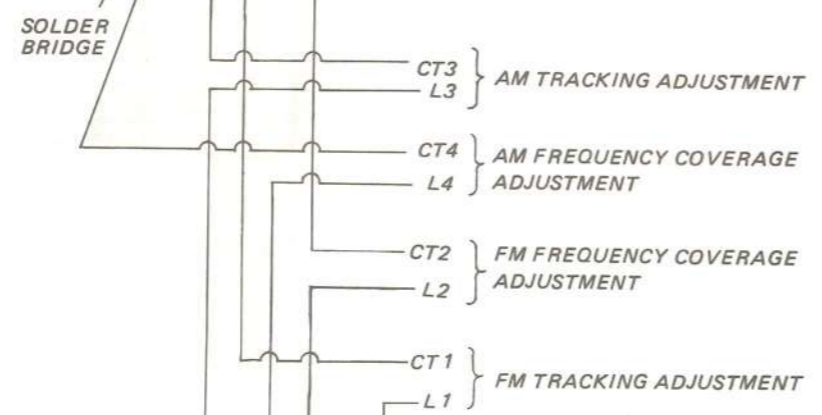
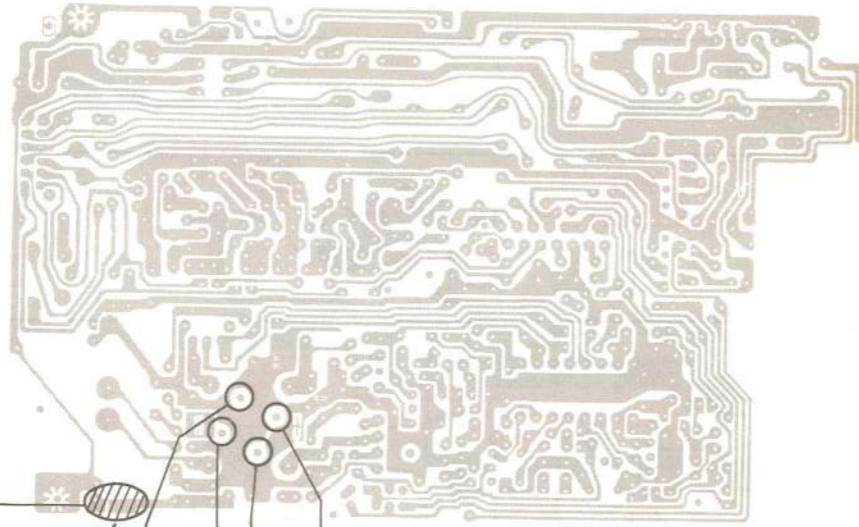
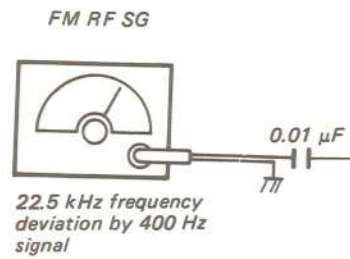
Adjustment Location: adjustment screw



main board - conductor side -

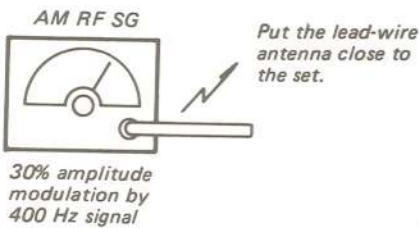
FM Section

Setting:
 FUNCTION switch: RADIO
 BAND switch: FM STEREO

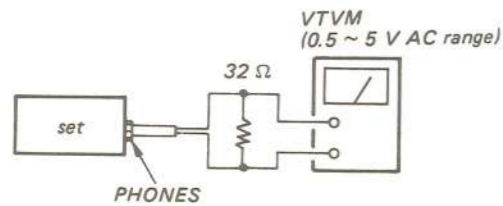


AM Section

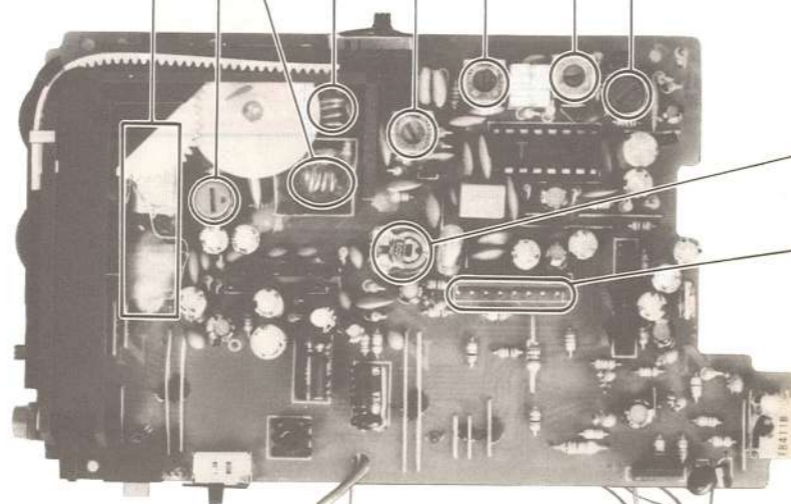
Setting:
 FUNCTION Switch: RADIO
 Band Switch: AM



Adjustment Location:
 main board



Repeat the procedures in each adjustment several times, and the frequency coverage and tracking adjustments should be finally done by the trimmer capacitors.



AM Frequency Coverage Adjustment

Pointer position	SG frequency	Adjustment parts	Reading on VTVM
f minimum	520 kHz	L4	maximum
f maximum	1680 kHz	CT4	

FM Frequency Coverage Adjustment

Pointer position	SG frequency	Adjustment part	Reading on VTVM
f minimum	87.35 MHz	L2	maximum
f maximum	107.8 MHz	CT2	

AM Tracking Adjustment

SG and set frequency	Adjustment parts	Reading on VTVM
600 kHz	L3	maximum
1400 kHz	CT3	

FM Tracking Adjustment

SG and set frequency	Adjustment parts	Reading on VTVM
87.35 MHz	L1	maximum
107.8 MHz	CT1	

AM IF Alignment

SG and set frequency	Adjustment parts	Reading on VTVM
1000 kHz	T3, T4	maximum

FM IF Alignment

SG and set frequency	Adjustment parts	Reading on VTVM
98 MHz	T1, T2	maximum

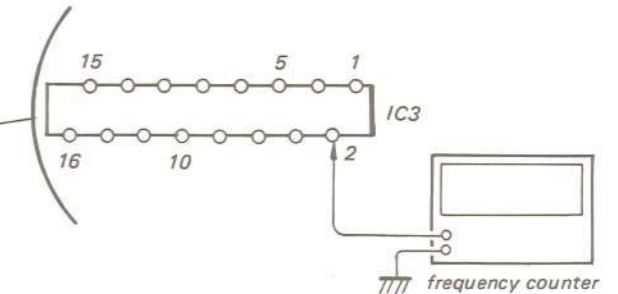
VCO Adjustment

Procedure:

FM RF SG

Carrier frequency: 98MHz (no modulation)

Output level: 60dB (1mV)

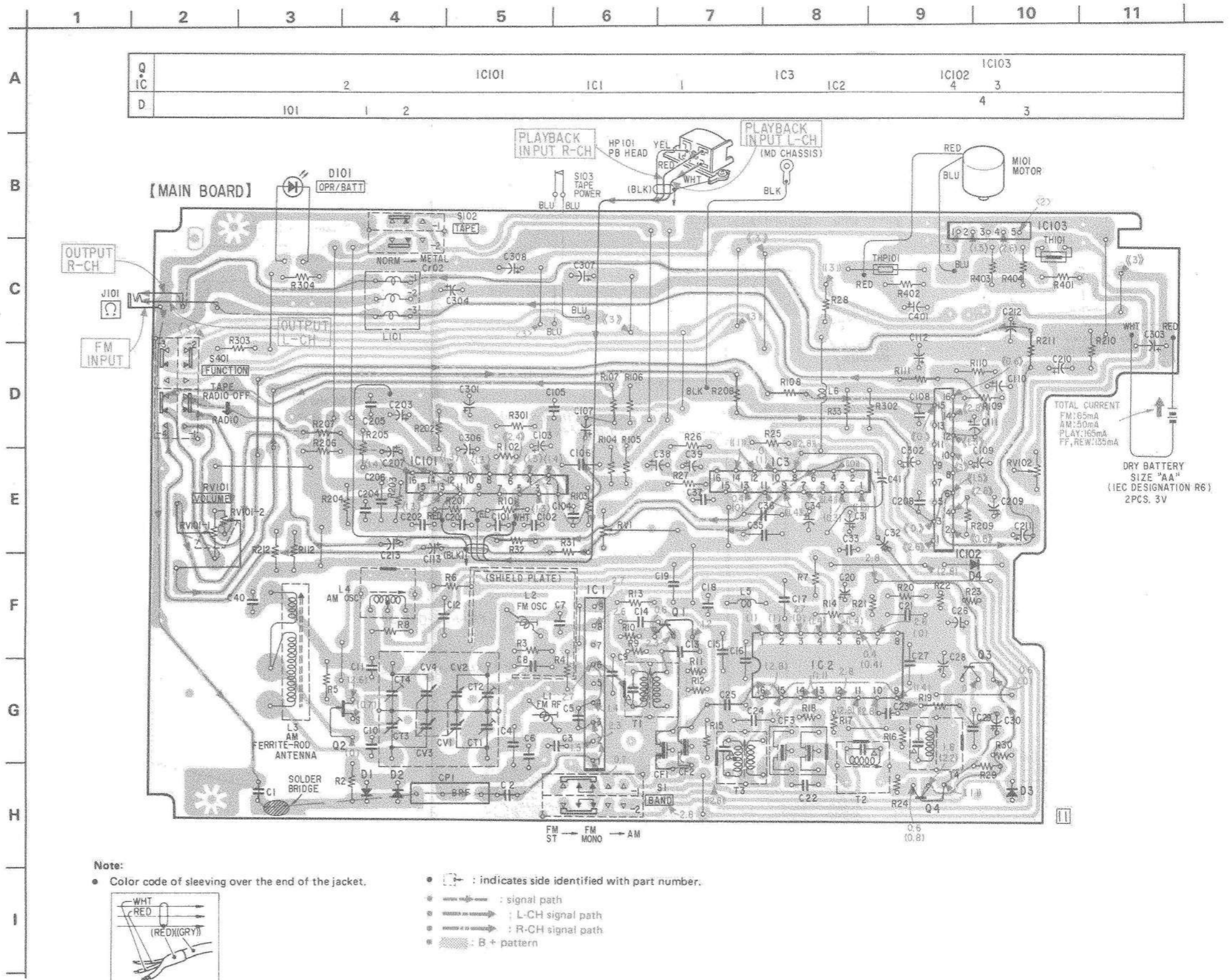
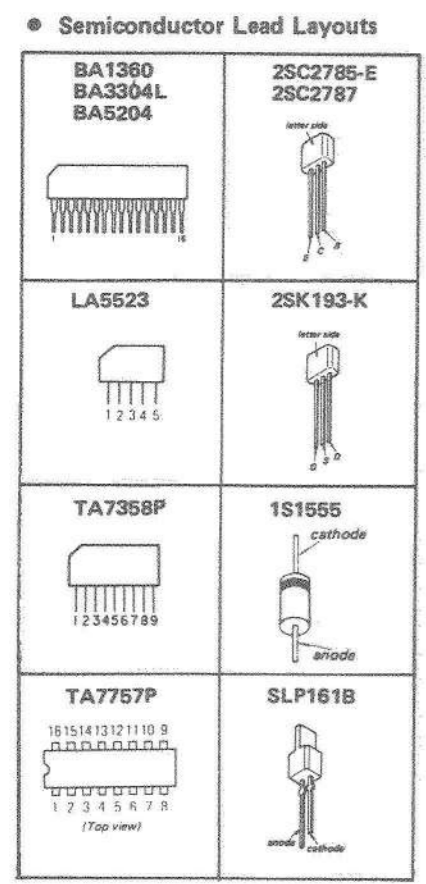


1. Tune the set to 98 MHz.
2. Adjust RV1 for 19 kHz ± 2 Hz on the counter.

SECTION 4
DIAGRAMS

WM-F22 WM-F22

4.1. MOUNTING DIAGRAM

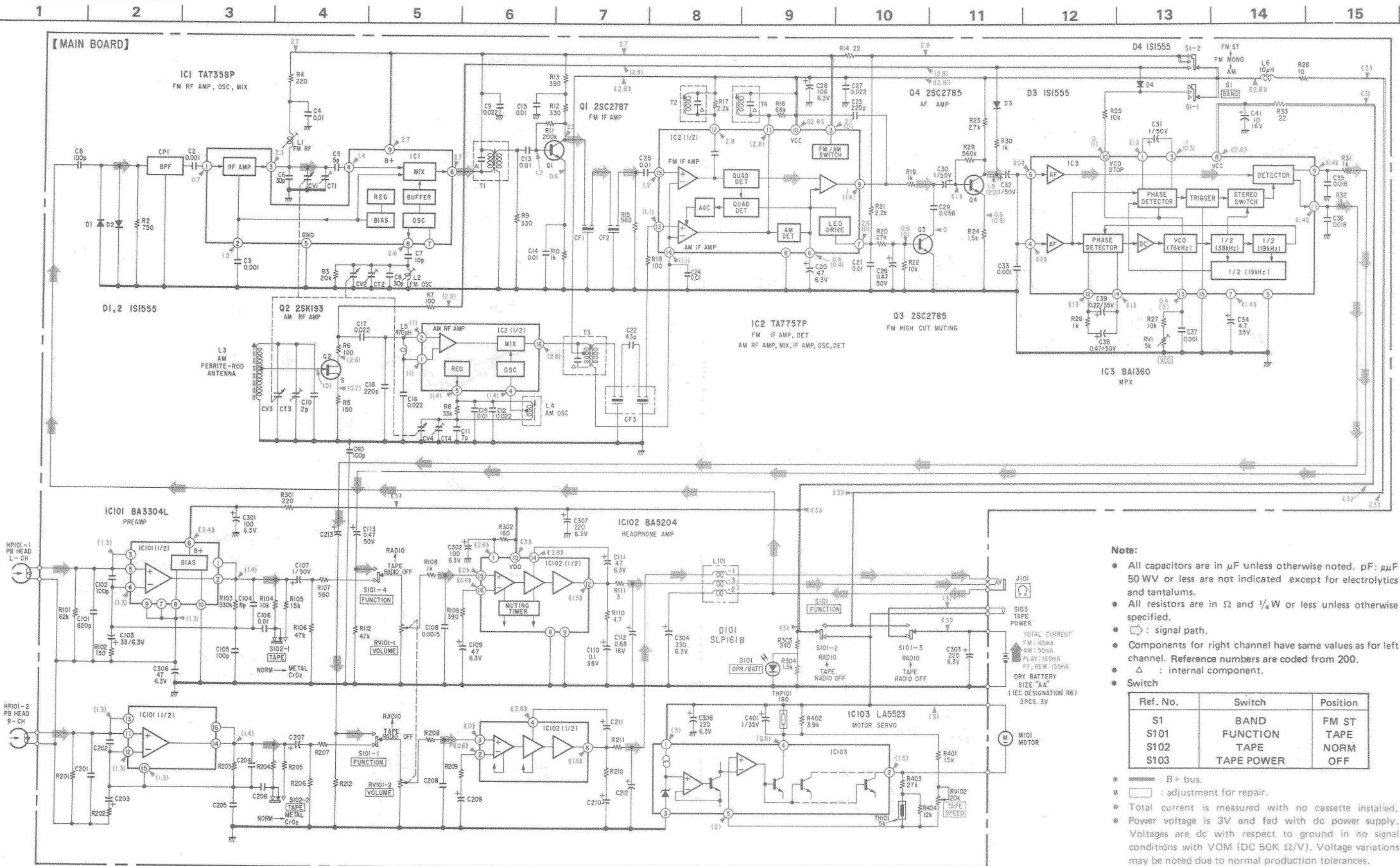


TOTAL CURRENT
FM: 65mA
AM: 50mA
PLAY: 165mA
FF, REW: 135mA

DRY BATTERY
SIZE "AA"
(IEC DESIGNATION R6)
2PCS. 3V

WM-F22 WM-F22

4-2. SCHEMATIC DIAGRAM



- Notes:**
- All capacitors are in μF unless otherwise noted. $\text{pF} = \mu\mu\text{F}$. 50 WV or less are not indicated except for electrolytics and tantalums.
 - All resistors are in Ω and $\frac{1}{4}\text{W}$ or less unless otherwise specified.
 - \square : signal path.
 - Components for right channel have same values as for left channel. Reference numbers are coded from 200.
 - Δ : internal component.
 - Switch
- | Ref. No. | Switch | Position |
|----------|------------|----------|
| S1 | BAND | FM ST |
| S101 | FUNCTION | TAPE |
| S102 | TAPE | NORM |
| S103 | TAPE POWER | OFF |
- --- : B+ bus.
 - \square : adjustment for repair.
 - Total current is measured with no cassette installed.
 - Power voltage is 3V and fad with dc power supply. Voltages are dc with respect to ground in no signal conditions with VOM (DC 50K Ω/V). Voltage variations may be noted due to normal production tolerances.
- no mark: FM (): AM
 ((): RADIO < >: TAPE
 << >>: TAPE and RADIO

SECTION 5
EXPLODED VIEWS AND PARTS LIST

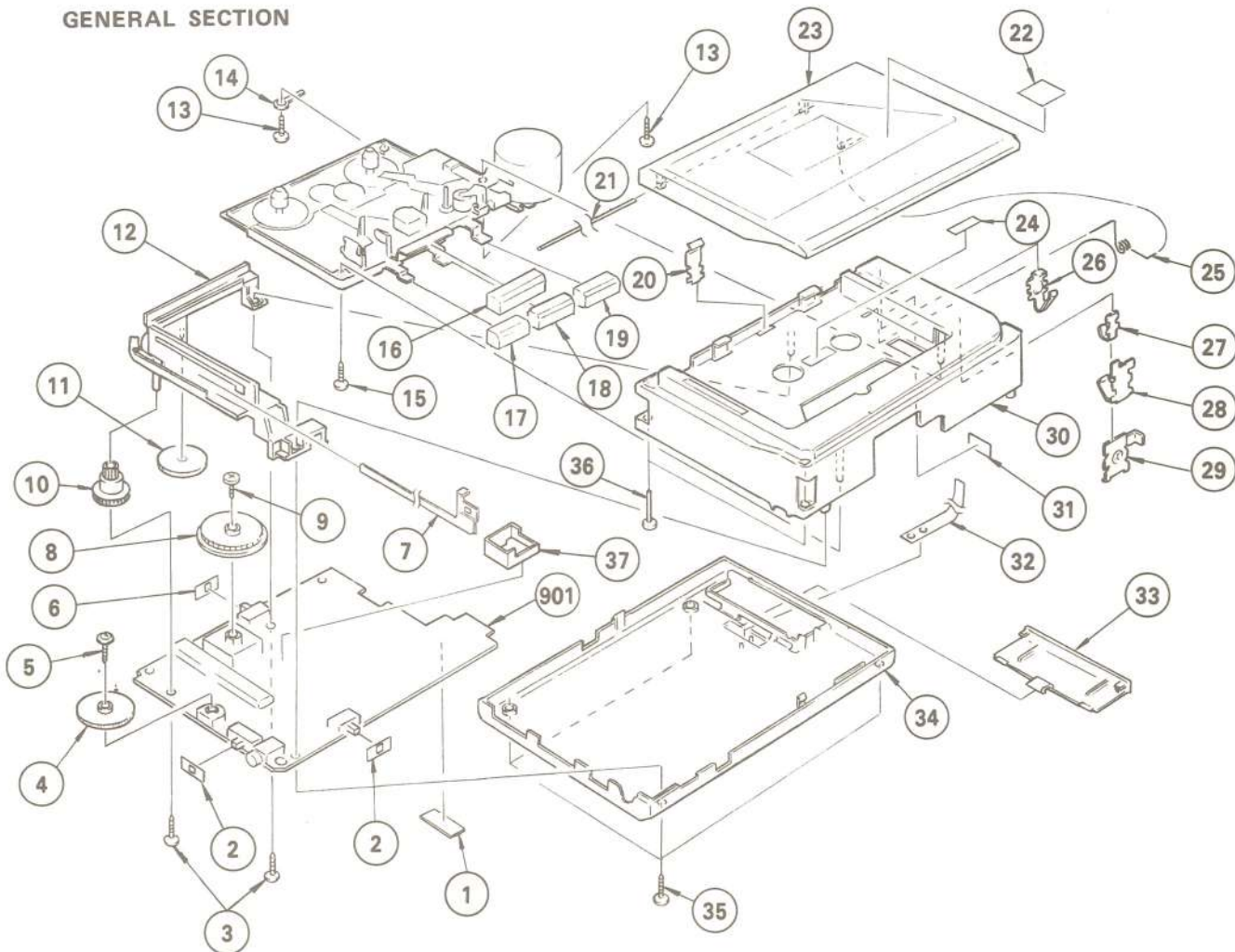
NOTE:

The mechanical parts with no reference number in the exploded views are not supplied.

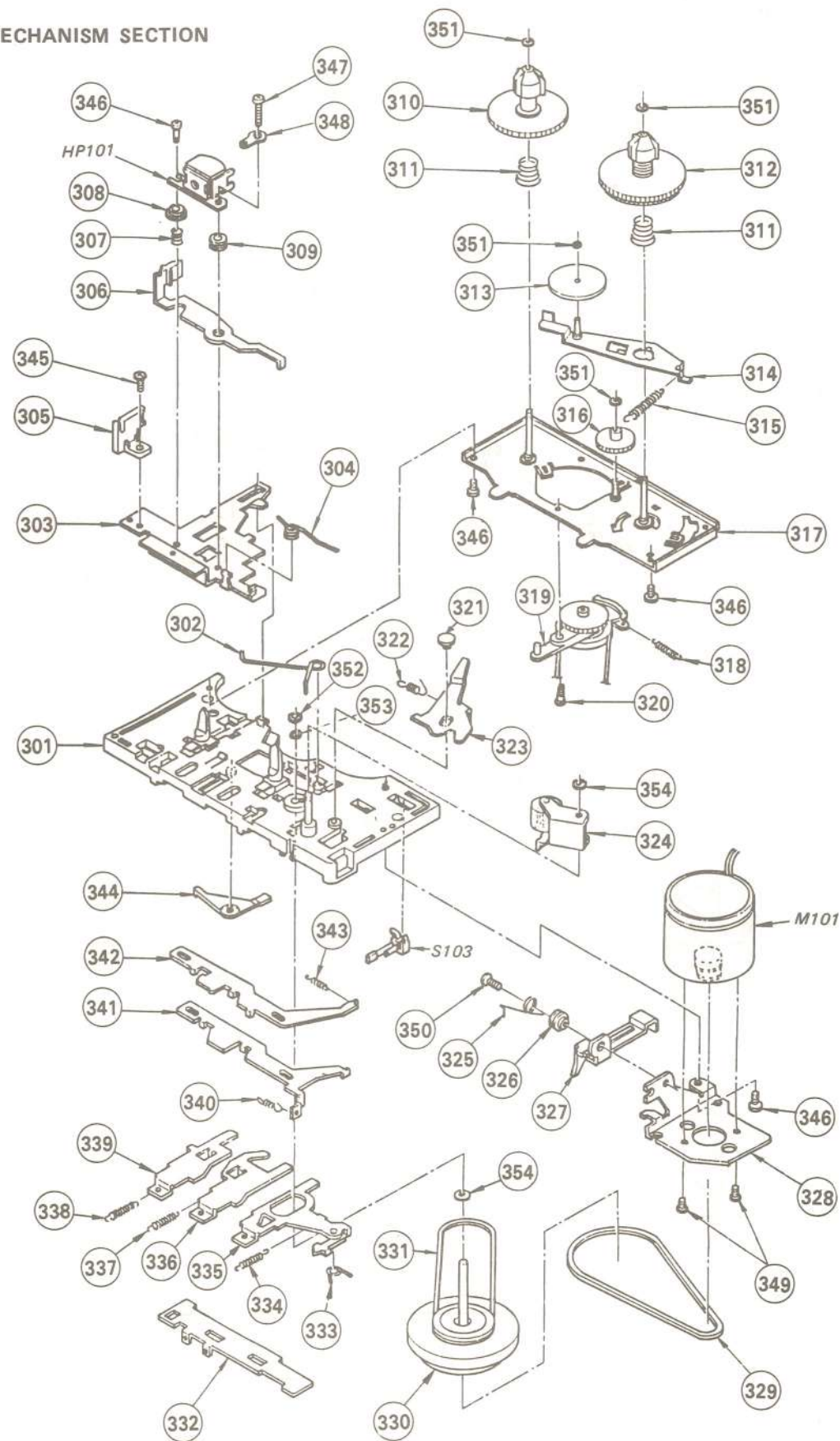
Items marked " * " are not stocked since they are seldom required for routine service. Some delay should be anticipated when ordering these items.

The construction parts of an assembled part are indicated with a collation number in the remark column.

GENERAL SECTION



MECHANISM SECTION



No.	Part No.	Description	REMARKS
1	3-831-441-XX	CUSHION	
2	3-305-653-00	PLATE (A), BLIND	
3	7-685-105-14	TPG +P 2X8, TYPE 2, NON-SLIT	
4	3-327-003-01	KNOB, VOL	
5	3-703-502-31	SCREW	
6	*3-319-039-01	PLATE, BLIND	
7	3-327-018-01	POINTER	
8	*3-327-009-01	GEAR, TUNING CAPACITOR	
9	3-880-990-00	SCREW (1.7X3), FLAT, (+) SPECIAL	
10	3-327-002-01	KNOB, TUN	
11	*3-327-010-01	GEAR, MIDWAY	
12	*3-327-019-01	CHASSIS, DIAL	
13	7-627-553-27	SCREW, PRECISION +P. 2X2.5	
14	7-623-505-01	LUG, 2	
15	7-685-107-21	SCREW +P 2X12 TYPE2 SLIT	
16	3-327-004-01	BUTTON, PLAY	
17	3-327-005-01	BUTTON, REW	
18	3-327-006-01	BUTTON, FF	
19	3-327-007-01	BUTTON, STOP	
20	3-327-011-01	SPRING	
21	*3-327-012-01	SHAFT, CASSETTE LID	
22	3-703-707-01	STICKER, SONY SYMBOL (21)	
23	X-3327-001-5	(BLACK)...CASSETTE LID ASSY	
	X-3327-001-6	(SILVER)...CASSETTE LID ASSY	

No.	Part No.	Description	REMARKS
24	3-578-101-00	PLATE, ORNAMENTAL	
25	3-327-015-01	SPRING	
26	3-319-009-01	TERMINAL BOARD (A), BATTERY	
27	3-309-443-00	SPRING, LEAF	
28	3-319-010-01	TERMINAL BOARD (C), BATTERY	
29	3-319-011-01	TERMINAL BOARD (D), BATTERY	
30	3-327-022-21	CABINET (FRONT)	
31	3-527-213-00	LABEL, SERIAL NUMBER	
32	9-911-816-01	RIBBON, BATTERY	
33	3-327-017-01	(BLACK)...LID, BATTERY CASE	
	3-327-017-11	(SILVER)...LID, BATTERY CASE	
34	3-327-021-01	(BLACK)...CABINET (REAR)	
	3-327-021-11	(SILVER)...CABINET (REAR)	
35	7-685-107-24	(SILVER)...SCREW +P 2X12 TYPE2 SLIT	
	7-685-107-29	(BLACK)...SCREW +P 2X12 TYPE2 SLIT	
36	3-327-008-01	SHAFT, BELT	
37	*3-327-014-01	PLATE (A), SHIELD	
901	*A-3215-786-A	PC BOARD ASSY, MAIN	

<u>No.</u>	<u>Part No.</u>	<u>Description</u>	<u>REMARKS</u>
301	3-596-901-01	PC BOARD ASSY	
302	3-596-903-01	SPRING, HEAD PANEL	
303	3-596-902-01	PANEL, HEAD	
304	3-596-912-01	SPRING, PINCH ROLLER	
305	3-596-904-01	GUIDE, TAPE	
306	3-596-906-01	PLATE ASSY, DETECTION	
307	3-596-907-01	SPRING, HEAD	
308	3-596-908-01	WASHER, AZIMUTH	
309	3-596-909-01	COLLAR, RPH	
310	3-596-935-01	REEL ASSY, SUPPLY	
311	3-596-936-01	SPRING, BACK TENSION	
312	3-596-934-01	REEL ASSY, TAKE-UP	
313	3-596-940-01	GEAR, T ROLLER	
314	3-596-938-01	RIVETING, TG PLATE	
315	3-596-939-01	SPRING, TG PLATE	
316	3-596-941-01	GEAR, FF	
317	3-596-933-01	RIVETING, REEL PC BOARD	
318	3-596-944-01	SPRING, RF PULLEY	
319	3-596-943-01	PULLEY ASSY, RF	
320	3-596-945-01	SCREW, ARM COLLAR	
321	3-596-952-01	SCREW, AL	
322	3-596-914-01	SPRING, AUTO LEVER	
323	3-596-951-01	LEVER, AUTO	
324	3-596-913-01	ARM ASSY, PINCH ROLLER	
325	3-596-950-01	SPRING, KICK ARM	
326	3-596-949-01	COLLAR, ARM, KICK	
327	3-596-948-01	LEVER, E	
328	3-596-947-01	BRACKET, MOTOR	
329	3-596-930-01	BELT, MAIN	
330	3-596-929-01	FLYWHEEL ASSY	
331	3-596-931-01	BELT, RF	
332	3-596-926-01	RETAINER	
333	3-596-921-01	SPRING	
334	3-596-920-01	SPRING	
335	3-596-919-01	RIVETING, STOP BUTTON LEVER	
336	3-596-922-01	LEVER, FF BUTTON	
337	3-596-923-01	SPRING, FF BUTTON LEVER	
338	3-596-925-01	SPRING, RWD BUTTON LEVER	
339	3-596-924-01	LEVER, RWD BUTTON	
340	3-596-927-01	SPRING, SW FUNCTION PLATE	
341	3-596-918-01	PLATE, FUNCTION, SW	
342	3-596-916-01	PLATE, FUNCTION	
343	3-596-917-01	SPRING, FUNCTION PLATE	
344	3-596-915-01	LEVER, RWD	
345	7-627-554-18	+P 2X3.5	
346	7-621-911-18	SCREW, TOTSU B 2X4	
347	7-621-255-35	SCREW +P 2X5	
348	7-623-505-01	LUG, 2	
349	7-627-552-18	SCREW, PRECISION +P 1.7X1.6	
350	7-627-553-48	SCREW, PRECISION +P 2X4	
351	3-596-937-01	WASHER (1.2X3X0.25)	
352	3-596-932-01	WASHER (1.55X3.8X0.5)	
353	3-307-948-01	WASHER, NYLON	
354	3-701-437-11	WASHER	
HP101	3-596-911-01	HEAD, PB	
M101	3-596-946-01	MOTOR ASSY	
S103	3-596-928-01	SWITCH, LEAF	

SECTION 6 ELECTRICAL PARTS LIST

NOTE:

Items marked " * " are not stocked since they are seldom required for routine service. Some delay should be anticipated when ordering these items.

If there are two or more same circuits in a set such as a stereophonic machine, only typical circuit parts may be indicated and capacitors and resistors in other same circuits may be omitted.

CAPACITORS:

MF:μF, PF:μμF.

RESISTORS

· All resistors are in ohms.
· F : nonflammable

COILS

· MMH : mH, UH : μH

SEMICONDUCTORS

In each case, U : μ, for example:
UA...: μA..., UPA...: μPA..., UPC...: μPC,
UPD...: μPD...

ELECTRICAL PARTS

Ref.No.	Part No.	Description			
901	*A-3215-786-A	PC BOARD ASSY, MAIN			
C1	1-102-106-00	CERAMIC	100PF	10%	50V
C2	1-101-001-00	CERAMIC	0.001MF		50V
C3	1-161-039-00	CERAMIC	0.001MF	10%	25V
C4	1-101-004-00	CERAMIC	0.01MF		50V
C5	1-102-864-00	CERAMIC	5PF	0.5PF	50V
C6	1-102-517-00	CERAMIC	30PF	5%	50V
C7	1-102-508-00	CERAMIC	10PF	0.5PF	50V
C8	1-102-603-00	CERAMIC	30PF	5%	50V
C9	1-101-005-00	CERAMIC	0.022MF		50V
C10	1-102-935-00	CERAMIC	2PF	0.25PF	50V
C11	1-102-745-00	CERAMIC	7PF	0.5PF	50V
C12	1-101-005-00	CERAMIC	0.022MF		50V
C13	1-101-004-00	CERAMIC	0.01MF		50V
C14	1-101-004-00	CERAMIC	0.01MF		50V
C15	1-101-004-00	CERAMIC	0.01MF		50V
C16	1-101-005-00	CERAMIC	0.022MF		50V
C17	1-101-005-00	CERAMIC	0.022MF		50V
C18	1-102-110-00	CERAMIC	220PF	10%	50V
C19	1-101-004-00	CERAMIC	0.01MF		50V
C20	1-123-647-00	ELECT	47MF	20%	6.3V
C21	1-101-004-00	CERAMIC	0.01MF		50V
C22	1-102-966-00	CERAMIC	43PF	5%	50V
C23	1-102-110-00	CERAMIC	220PF	10%	50V
C24	1-101-004-00	CERAMIC	0.01MF		50V
C25	1-101-004-00	CERAMIC	0.01MF		50V
C26	1-123-379-00	ELECT	0.47MF	20%	50V
C27	1-161-055-00	CERAMIC	0.022MF	10%	25V
C28	1-123-307-00	ELECT	100MF	20%	6.3V
C29	1-161-022-00	CERAMIC	0.056MF	10%	25V
C30	1-123-611-00	ELECT	1MF	20%	50V
C31	1-123-611-00	ELECT	1MF	20%	50V
C32	1-123-380-00	ELECT	1MF	20%	50V
C33	1-102-074-00	CERAMIC	0.001MF	10%	50V
C34	1-123-369-00	ELECT	4.7MF	20%	35V
C35	1-161-054-00	CERAMIC	0.018MF	10%	25V
C36	1-161-054-00	CERAMIC	0.018MF	10%	25V
C37	1-104-077-00	POLYSTYRENE	0.001MF	5%	50V
C38	1-123-610-00	ELECT	0.47MF	20%	50V
C39	1-131-343-00	TANTALUM	0.22MF	20%	35V
C40	1-102-106-00	CERAMIC	100PF	10%	50V
C41	1-123-617-00	ELECT	10MF	20%	16V
C101	1-102-117-00	CERAMIC	820PF	10%	50V
C102	1-102-106-00	CERAMIC	100PF	10%	50V
C103	1-123-646-00	ELECT	33MF	20%	6.3V
C104	1-102-945-00	CERAMIC	8PF	1PF	50V

ELECTRICAL PARTS

Ref.No.	Part No.	Description			
C105	1-102-106-00	CERAMIC	100PF	10%	50V
C106	1-101-004-00	CERAMIC	0.01MF		50V
C107	1-123-611-00	ELECT	1MF	20%	50V
C108	1-102-119-00	CERAMIC	0.0015MF	10%	50V
C109	1-123-647-00	ELECT	47MF	20%	6.3V
C110	1-131-341-00	TANTALUM	0.1MF	20%	35V
C111	1-123-647-00	ELECT	47MF	20%	6.3V
C112	1-131-415-00	TANTALUM	0.68MF	20%	16V
C113	1-123-379-00	ELECT	0.47MF	20%	50V
C201	1-102-117-00	CERAMIC	820PF	10%	50V
C202	1-102-106-00	CERAMIC	100PF	10%	50V
C203	1-123-318-00	ELECT	33MF	20%	6.3V
C204	1-102-945-00	CERAMIC	8PF	1PF	50V
C205	1-102-106-00	CERAMIC	100PF	10%	50V
C206	1-101-004-00	CERAMIC	0.01MF		50V
C207	1-123-380-00	ELECT	1MF	20%	50V
C208	1-102-119-00	CERAMIC	0.0015MF	10%	50V
C209	1-123-647-00	ELECT	47MF	20%	6.3V
C210	1-131-341-00	TANTALUM	0.1MF	20%	35V
C211	1-123-306-00	ELECT	47MF	20%	6.3V
C212	1-131-415-00	TANTALUM	0.68MF	20%	16V
C213	1-123-379-00	ELECT	0.47MF	20%	50V
C301	1-123-307-00	ELECT	100MF	20%	6.3V
C302	1-123-661-00	ELECT	100MF	20%	6.3V
C303	1-124-444-00	ELECT	220MF	20%	6.3V
C304	1-124-442-00	ELECT	330MF	20%	6.3V
C306	1-123-647-00	ELECT	47MF	20%	6.3V
C307	1-124-444-00	ELECT	220MF	20%	6.3V
C308	1-124-444-00	ELECT	220MF	20%	6.3V
C401	1-131-347-00	TANTALUM	1MF	20%	35V
CF1	1-527-786-00	FILTER, CERAMIC			
CF2	1-527-786-00	FILTER, CERAMIC			
CF3	1-527-996-00	FILTER, CERAMIC			
CP1	1-235-142-00	FILTER, BAND PASS			
CT1-4	1-151-437-00	CAP, TUNING, POLYETHYLENE			
CV1-4	1-151-437-00	CAP, TUNING, POLYETHYLENE			
D1	8-719-815-55	DIODE 1S1555			
D2	8-719-815-55	DIODE 1S1555			
D3	8-719-815-55	DIODE 1S1555			
D4	8-719-815-55	DIODE 1S1555			
D101	8-719-901-96	DIODE SLP161B			
HP101	3-596-911-01	HEAD, PLAYBACK			
IC1	8-759-204-01	IC TA7358P			
IC2	8-759-205-80	IC TA7757P			
IC3	1-806-901-11	IC BA1360			

ELECTRICAL PARTS

Ref.No.	Part No.	Description
IC101	8-759-911-30	IC BA3304L
IC102	1-806-902-11	IC BA5204
IC103	8-759-801-12	IC LA5523
J101	1-507-950-31	JACK (SMALL TYPE), HEADPHONE
L1	*1-422-130-00	COIL, FM RF
L2	1-422-131-00	COIL, FM OSCILLATION
L3	1-402-166-11	ANTENNA, FERRITE-ROD (MW)
L4	1-406-063-21	COIL, MW OSC
L5	1-408-203-00	MICRO INDUCTOR 470UH
L6	1-410-021-11	MICRO INDUCTOR 10UH
L101	1-409-365-00	COIL, TRAP
M101	3-596-946-01	MOTOR
Q1	8-729-178-73	TRANSISTOR 2SC2787
Q2	8-729-119-35	TRANSISTOR 2SK193-K
Q3	8-729-178-55	TRANSISTOR 2SC2785-E
Q4	8-729-178-55	TRANSISTOR 2SC2785-E
R2	1-247-828-00	CARBON 750 5% 1/6W
R3	1-247-862-00	CARBON 20K 5% 1/6W
R4	1-247-815-00	CARBON 220 5% 1/6W
R5	1-247-811-00	CARBON 150 5% 1/6W
R6	1-247-807-00	CARBON 100 5% 1/6W
R7	1-247-807-00	CARBON 100 5% 1/6W
R8	1-247-867-00	CARBON 33K 5% 1/6W
R9	1-247-819-00	CARBON 330 5% 1/6W
R10	1-247-831-00	CARBON 1K 5% 1/6W
R11	1-247-886-00	CARBON 200K 5% 1/6W
R12	1-247-819-00	CARBON 330 5% 1/6W
R13	1-247-821-00	CARBON 390 5% 1/6W
R14	1-247-791-00	CARBON 22 5% 1/6W
R15	1-247-825-00	CARBON 560 5% 1/6W
R16	1-247-875-00	CARBON 68K 5% 1/6W
R17	1-247-839-00	CARBON 2.2K 5% 1/6W
R18	1-247-807-00	CARBON 100 5% 1/6W
R19	1-247-831-00	CARBON 1K 5% 1/6W
R20	1-247-865-00	CARBON 27K 5% 1/6W
R21	1-247-839-00	CARBON 2.2K 5% 1/6W
R22	1-247-855-00	CARBON 10K 5% 1/6W
R23	1-247-841-00	CARBON 2.7K 5% 1/6W
R24	1-247-835-00	CARBON 1.5K 5% 1/6W
R25	1-247-855-00	CARBON 10K 5% 1/6W
R26	1-247-831-00	CARBON 1K 5% 1/6W
R27	1-247-855-00	CARBON 10K 5% 1/6W
R28	1-247-783-00	CARBON 10 5% 1/6W
R29	1-247-897-00	CARBON 560K 5% 1/6W
R30	1-247-831-00	CARBON 1K 5% 1/6W
R31	1-247-831-00	CARBON 1K 5% 1/6W
R32	1-247-831-00	CARBON 1K 5% 1/6W
R33	1-247-791-00	CARBON 22 5% 1/6W
R101	1-247-874-00	CARBON 62K 5% 1/6W
R102	1-247-810-00	CARBON 130 5% 1/6W
R103	1-247-891-00	CARBON 330K 5% 1/6W
R104	1-247-855-00	CARBON 10K 5% 1/6W
R105	1-247-859-00	CARBON 15K 5% 1/6W
R106	1-247-871-00	CARBON 47K 5% 1/6W
R107	1-247-825-00	CARBON 560 5% 1/6W

ELECTRICAL PARTS

Ref.No.	Part No.	Description
R108	1-247-831-00	CARBON 1K 5% 1/6W
R109	1-247-821-00	CARBON 390 5% 1/6W
R110	1-247-775-00	CARBON 4.7 5% 1/6W
R111	1-247-770-00	CARBON 3 5% 1/6W
R112	1-247-871-00	CARBON 47K 5% 1/6W
R201	1-247-874-00	CARBON 62K 5% 1/6W
R202	1-247-810-00	CARBON 130 5% 1/6W
R203	1-247-891-00	CARBON 330K 5% 1/6W
R204	1-247-855-00	CARBON 10K 5% 1/6W
R205	1-247-859-00	CARBON 15K 5% 1/6W
R206	1-247-871-00	CARBON 47K 5% 1/6W
R207	1-247-825-00	CARBON 560 5% 1/6W
R208	1-247-831-00	CARBON 1K 5% 1/6W
R209	1-247-821-00	CARBON 390 5% 1/6W
R210	1-247-775-00	CARBON 4.7 5% 1/6W
R211	1-247-770-00	CARBON 3 5% 1/6W
R212	1-247-871-00	CARBON 47K 5% 1/6W
R301	1-247-815-00	CARBON 220 5% 1/6W
R302	1-247-812-00	CARBON 160 5% 1/6W
R303	1-247-816-00	CARBON 240 5% 1/6W
R304	1-247-835-00	CARBON 1.5K 5% 1/6W
R401	1-247-859-00	CARBON 15K 5% 1/6W
R402	1-247-845-00	CARBON 3.9K 5% 1/6W
R403	1-247-865-00	CARBON 27K 5% 1/6W
R404	1-247-857-00	CARBON 12K 5% 1/6W
RV1	1-226-235-00	RES, ADJ, CARBON 5K
RV101	1-230-485-21	RES, VAR, CARBON 10K/10K (VOLUME)
RV102	1-230-891-11	RES, ADJ, CARBON 20K
S1	1-554-061-00	SWITCH, SLIDE (BAND)
S101	1-554-295-00	SWITCH, SLIDE (FUNCTION)
S102	1-554-222-00	SWITCH, SLIDE (TAPE)
S103	3-596-928-01	SWITCH, LEAF
T1	1-403-872-00	I.F.T CONVERTER FM
T2	*1-404-626-11	COIL, FM DETECTOR
T3	1-404-425-00	COIL, MW IF
T4	1-404-460-00	COIL, MW DETECTOR

TH101	1-800-279-21	THERMISTOR 5K
THP101	1-806-881-11	THERMISTOR (POSITIVE) 180

ACCESSORY & PACKING MATERIAL

Part No.	Description
3-321-020-01	BELT, SHOULDER
3-570-631-81	BAG, PROTECTION
3-327-023-01	(AEP)...LABEL, MODEL NUMBER
3-327-024-01	(UK)...LABEL, MODEL NUMBER
3-327-031-01	CUSHION
3-327-032-01	(UK)...INDIVIDUAL CARTON
3-327-036-01	(AEP)...INDIVIDUAL CARTON
3-327-042-01	SPACER
3-701-624-00	BAG, POLYETHYLENE
3-703-539-01	(AEP).....INSTRUCTION, FTZ
3-703-910-01	(BLACK)...LABEL, COLOR
3-703-921-01	(SILVER)...LABEL, COLOR
3-760-552-11	(AEP,UK)...MANUAL, INSTRUCTION
3-760-552-41	(AEP).....MANUAL, INSTRUCTION
8-952-217-91	MDR-02L(K) SET (HEADPHONE)

WM-F22

SERVICE MANUAL

AEP Model
UK Model
No.1
September, 1985

SUPPLEMENT

File this supplement with the Service Manual.

SUBJECT: ADDITIONAL COLOR VARIATION

• BLUE TYPE HAS BEEN ADDED.

<u>No.</u>	<u>Part No.</u>	<u>Description</u>
23	X-3327-001-7	CASSETTE LID ASSY
33	3-327-017-21	LID, BATTERY CASE
34	3-327-021-21	CABINET (REAR)

Sony Corporation

9-951-791-81

FM/AM STEREO
CASSETTE PLAYER
SONY®

English

8510261-1
Printed in Japan
©1985

TC