

TCM-S67V

SERVICE MANUAL

US Model
Canadian Model
AEP Model
UK Model
E Model



Model Name Using Similar Mechanism	NEW
Tape Transport Mechanism Type	MT-S63

SPECIFICATIONS

Recording system 2-track 1 channel monaural
Frequency response 250 – 6,300 Hz
Speaker Approx. 3.6 cm (1 7/16 in.) dia.
Power output 130 mW (at 10% harmonic distortion)
Input Microphone input jack (minijack) sensitivity 0.2 mV for 3 kΩ or lower impedance microphone
Output Earphone jack (minijack) for 8 – 300 Ω earphone
Power requirements 3 V DC, two R6 (size AA) batteries
DC IN 3V jack accepts:
• Sony AC power adaptor (supplied to purchased in Canada) or
• AC-E30M AC power adaptor (not supplied) for use on:

Canada, US	120 V AC, 60 Hz
U.K.	240 V AC, 50 Hz
European countries	220 V AC, 60 Hz or 220 V AC, 50 Hz

• Sony DCC-E130L car battery cord (not supplied) for use on 12 V car battery.

Battery life

Batteries	Recording
Sony batteries SUM-3 (NS)	Approx. 4 hours
Sony alkaline batteries AM3(N)	Approx. 12 hours

Dimensions

Approx. 93.6 x 120.1 x 39.5 mm (w/h/d) (3 3/4 x 4 7/8 x 1 9/16 in.) incl. projecting parts and controls

Mass

Approx. 260g (9.9 oz.) incl. batteries

Supplied accessories AC power adaptor (1)
Optional accessories Car battery cord DCC-E130L
Monaural earphone ME-81, ME-L82
Connecting cord RK-G64HG
Electret condenser microphone ECM-T10 (Except US)
Electret condenser microphone ECM-01 (US)
AC power adaptor AC-E30M

Your dealer may not handle some of the listed optional accessories. Please ask the dealer for detailed information.

Design and specifications subject to change without notice.

Note

This appliance conforms with EEC Directive 87/308/EEC regarding interference suppression.



CASSETTE-CORDER
SONY®

Operating with Batteries

When to replace the batteries

When the batteries become weak, the REC/BATT indicator will glow faintly and the playback sound will become distorted or unstable.

In this case, replace both batteries with new ones.

Concerning the battery life, see "Specifications".

Operating on House Current

Note on the AC power adaptor

Use only the supplied AC power adaptor (purchased in Canada only) or the AC-E30M AC power adaptor (not supplied). Do not use any other AC power adaptor.

Polarity of the plug
(Unified polarity type)



Note

Power will be supplied through the AC power adaptor or the car battery cord when it is connected to the unit instead of the installed batteries.

Make sure that the AC power adaptor or the car battery cord is disconnected from the unit when you wish to use the unit with the installed batteries.

SERVICE NOTE

● Repairing printed resistor

Cut both side of the resistor and solder the carbon resistor having same value in place of printed one of the conductor side.

1/32W carbon resistor is supplied for the replacing part of the printed resistor.

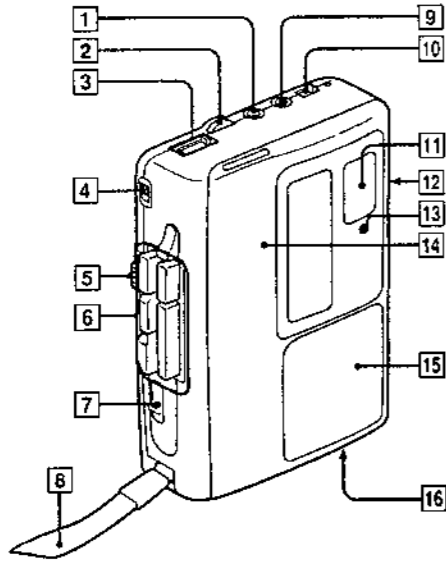
Notes on chip component replacement

- Never reuse a disconnected chip component.
- Notice that the minus side of a tantalum capacitor may be damaged by heat.

SECTION 1 GENERAL

This section is extracted from instruction manual.

1-1. PARTS IDENTIFICATION



- 1 MIC (microphone) (plug in power) jack
- 2 VOL (volume) control
- 3 COUNTER (tape counter) and counter reset button
For indexing the tape contents. Before recording, press the counter reset button to set the tape counter to "000".
- 4 MIC SENS (microphone sensitivity) switch
- 5 FAST PB (fast playback) switch
- 6 Tape operation buttons
● REC (record) / ▶ PLAY / ■ STOP / ►► FF/CUE (fast forward/cue) / ◀◀ REW/REVIEW (rewind/review) button
- 7 PAUSE switch
- 8 Handstrap
- 9 EAR (earphone) jack
- 10 VOR (Voice Operated Recording) switch
- 11 Flat Mic (built-in microphone)
- 12 Battery compartment (rear)
- 13 REC/BATT (recording/battery) indicator
- 14 Cassette holder
- 15 Speaker (built-in)
- 16 DC IN 3V (external power input) jack

SECTION 2 MECHANICAL ADJUSTMENTS

PRECAUTION

1. Clean the following parts with a denatured-alcohol-moistened swab:

record/playback head	pinch roller
erase head	rubber belts
capstanidlers	
2. Demagnetize the record/playback head with a head demagnetizer. (Do not bring the head demagnetizer close to the erase head.)
3. Do not use a magnetized screwdriver for the adjustments.
4. After the adjustments, apply suitable locking compound to the parts adjusted.
5. The adjustments should be performed with the rated power supply voltage unless otherwise noted.

Power Supply Voltage : 3V dc

Torque Measurement

Torque	Meter Reading	Torque Meter
Forward	More than 23 - 45 g-cm (More than 0.32 - 0.62 oz-inch)	CQ-102C
Past Forward and Rewind	More than 60 g-cm (More than 0.83 oz-inch)	CQ-201B
Back Tension	1.5 - 3.5 g-cm (0.021 - 0.049 oz-inch)	CQ-102C

Tape Tension Measurement

Meter	Meter Reading
CQ-403A	More than 60g(2.12 oz)

SECTION 3 ELECTRICAL ADJUSTMENTS

Test tape

Type	Signal	Used for
WS-48A	3kHz, 0dB	tape speed adjustment

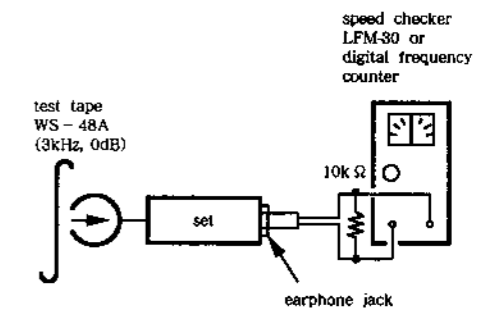
Tape Speed Adjustment

Setting:

VOL control: mechanical mid

Procedure:

Mode: playback

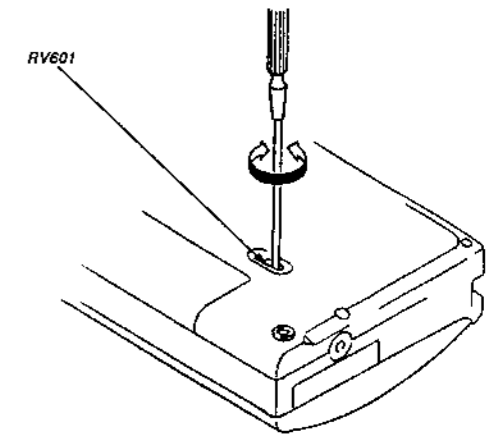


Specification:

Speed checker	Digital frequency counter
- 0.5 to +1.5%	3,000 ± 15 Hz

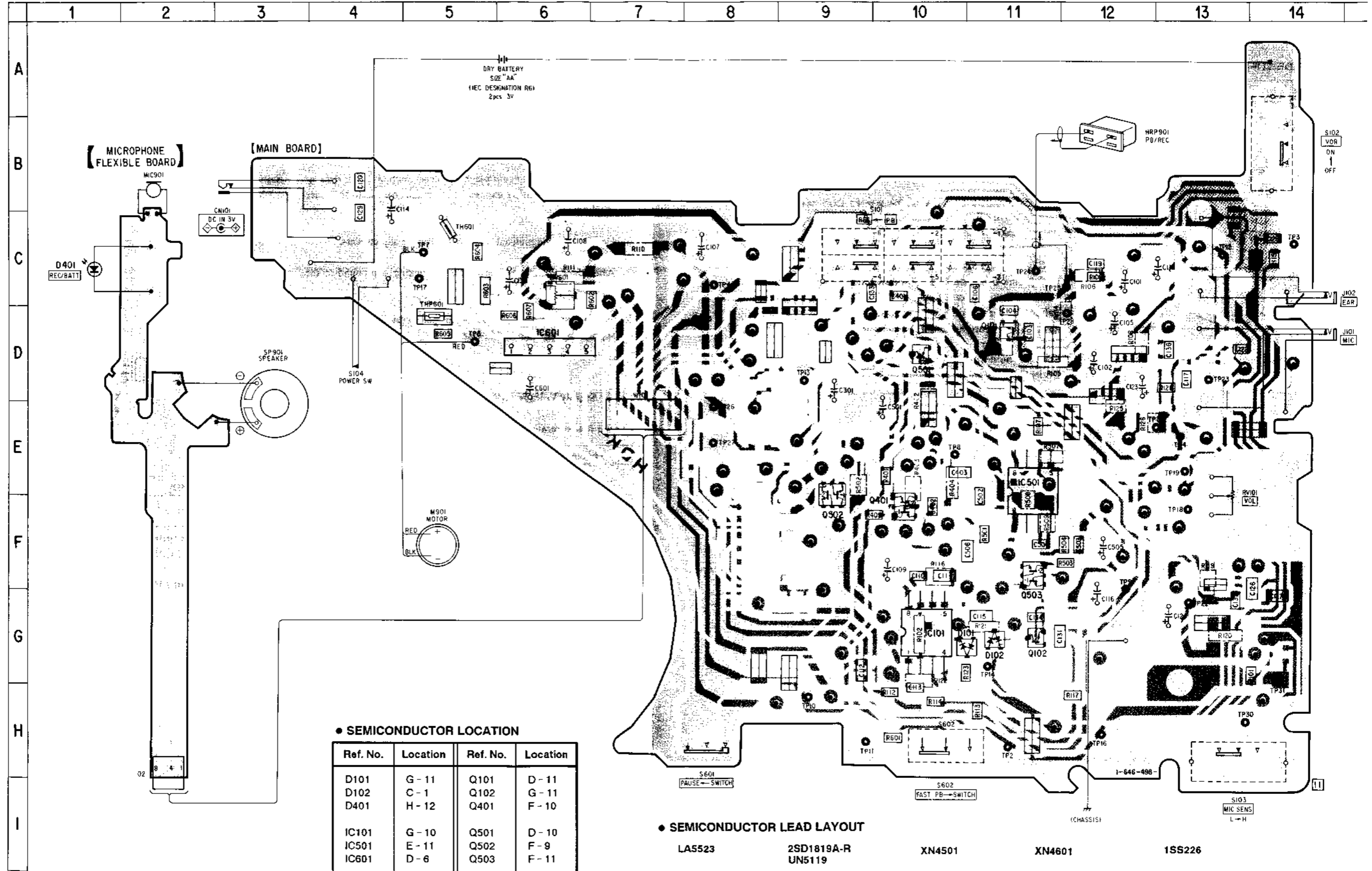
Frequency difference between the beginning and the end of the tape should be within 1% (30Hz).

Adjustment Location : Main Board



SECTION 4
DIAGRAM

4-1. PRINTED WIRING BOARDS



• SEMICONDUCTOR LOCATION

Ref. No.	Location	Ref. No.	Location
D101	G - 11	Q101	D - 11
D102	C - 1	Q102	G - 11
D401	H - 12	Q401	F - 10
IC101	G - 10	Q501	D - 10
IC501	E - 11	Q502	F - 9
IC601	D - 6	Q503	F - 11

• SEMICONDUCTOR LEAD LAYOUT

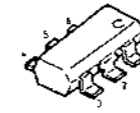
LA5523



2SD1819A-R
UN5119



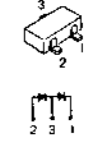
XN4501



XN4601



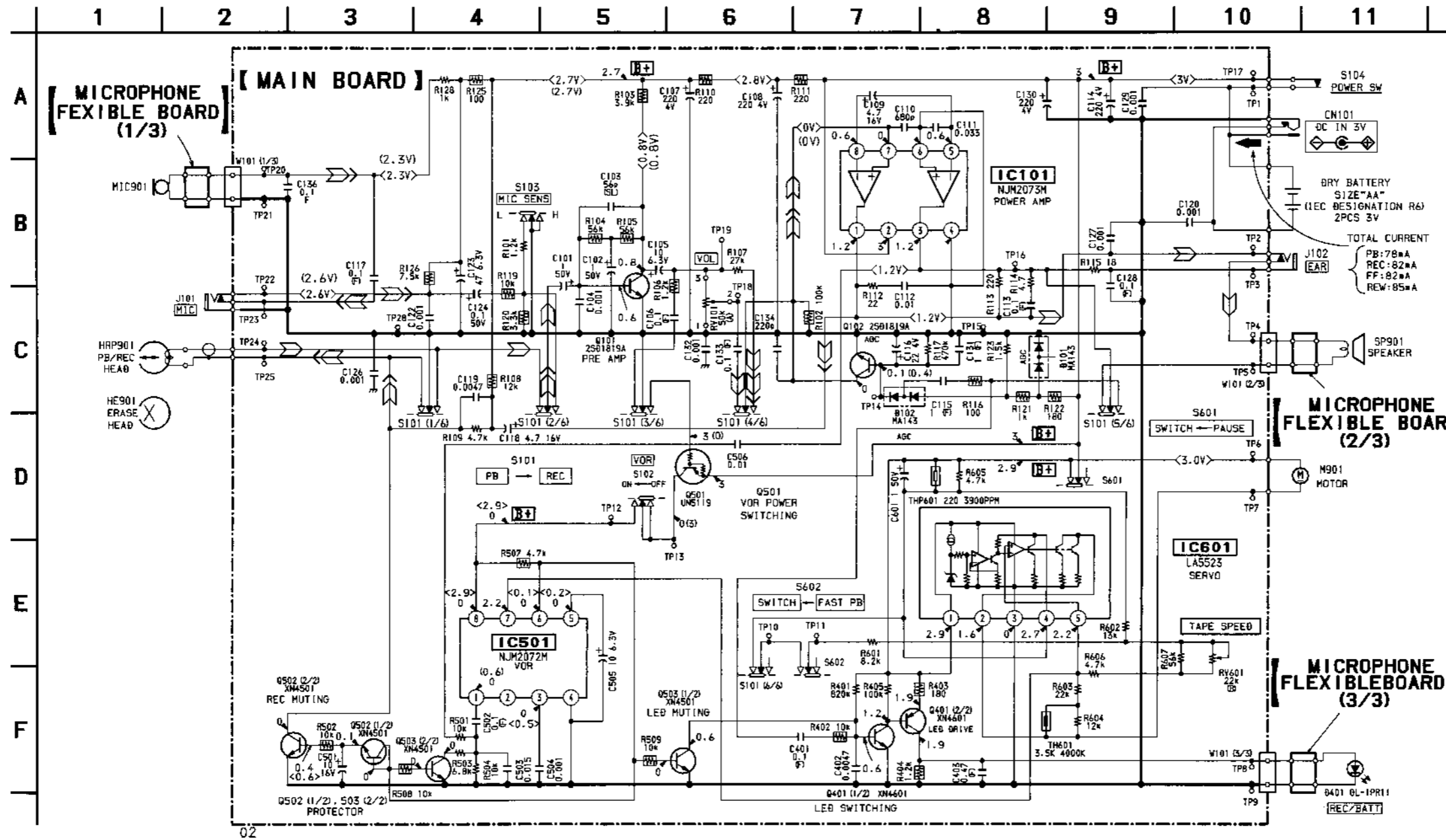
1SS226



Note:

- : parts extracted from the component side.
- : parts mounted on the conductor side.
- : Through hole.
- ▨ : Pattern on the side which is seen.
- ▩ : Pattern of the rear side.
- : printed resistor.

4-2. SCHEMATIC DIAGRAMS



Note :

- All capacitors are in μ F unless otherwise noted. pF: μ F
- All resistors are in Ω and $\frac{1}{2}W$ or less unless otherwise specified.
- \square : printed resistor.
- \square : B+ Line
- \square : adjustment for repair.
- Total current is measured with no cassette installed.
- Power voltage is dc 3V and fed with regulated dc power supply from external power voltage jack.

- Voltage and waveforms are dc with respect to ground under no-signal (detuned) conditions.
- no mark : PLAY
- () : REC
- () : VOR ON
- Voltages are taken with a VOM (Input impedance 10M Ω). Voltage variations may be noted due to normal production tolerances.
- Signal path.
- \square : PB
- \square : REC

SECTION 5 EXPLODED VIEWS

NOTE:

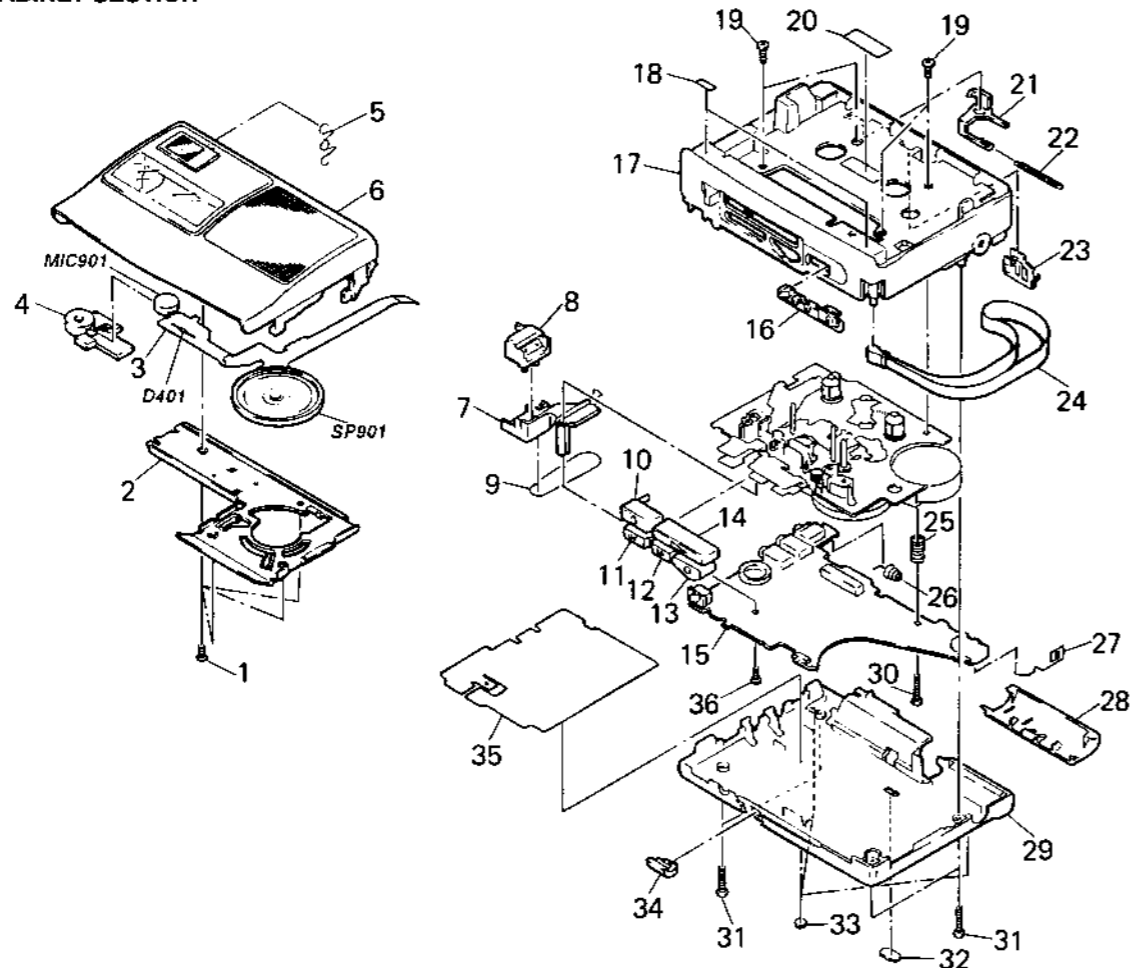
- -XX, -X mean standardized parts, so they may have some difference from the original one.
- The construction parts of an assembled part are indicated with a collation number in the remark column.

- Color indication of Appearance Parts
Example:
KNOB, BALANCE (WHITE)...(RED)

↑ ↑
Parts color Cabinet's color

- Items marked "*" are not stocked since they are seldom required for routine service. Some delay should be anticipated when ordering these items.
- The mechanical parts with no reference number in the exploded views are not supplied.
- Hardware (# mark) list is given in the last of this parts list.

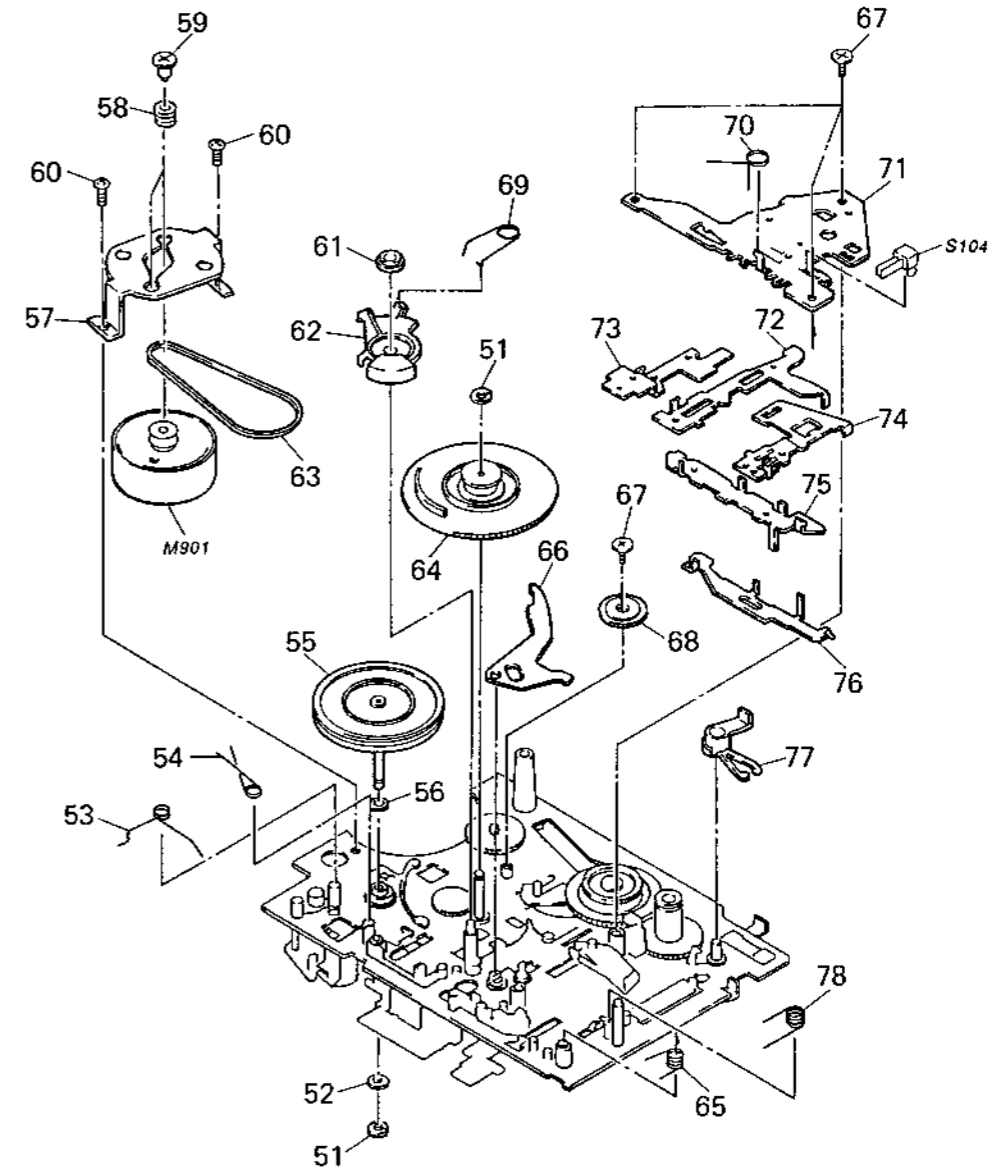
5-1. CABINET SECTION



Ref. No.	Part No.	Description	Remark
1	3-318-382-01	SCREW (1.7X3), TAPPING	
* 2	3-385-848-01	BRACKET (SPK2)	
3	1-646-496-11	PC BOARD, MICROPHONE FLEXIBLE	
* 4	3-385-850-01	CUSHION (MICROPHONE FLAT)	
5	3-346-509-11	SPRING, CASSETTE-UP	
6	X-3366-080-1	LID (B-F) ASSY, CASSETTE	
7	3-386-077-01	BRACKET (COUNTER)	
8	1-548-582-11	COUNTER, TAPE (SMALL TYPE)	
9	3-386-076-01	BELT (COUNTER)	
10	3-385-858-01	BUTTON (REC)	
11	3-385-861-01	BUTTON (REW)	
12	3-385-860-01	BUTTON (FF)	
13	3-385-862-01	BUTTON (STOP)	
14	3-385-859-01	BUTTON (PLAY)	
* 15	A-3016-287-A	MAIN BOARD, COMPLETE	
16	3-385-870-01	KNOB (PAUSE)	
17	3-385-886-41	CABINET (FRONT)	
18	3-831-441-XX	CUSHION	
19	3-318-203-61	SCREW (B1.7X4), TAPPING	
20	3-578-101-21	PLATE, ORNAMENTAL	

Ref. No.	Part No.	Description	Remark
21	3-385-866-01	LEVER (CLAW DETECTION)	
22	3-385-855-01	SPRING (CLAW DETECTION), TENSION	
23	3-385-867-01	SPRING (CASSETTE RETAINER), LEAF	
24	3-320-982-01	STRAP, HAND	
25	3-386-123-01	SPRING (PC BOARD GROUND)	
26	3-385-864-01	SPRING, BATTERY COIL	
27	3-385-863-01	TERMINAL, BATTERY	
28	3-385-876-01	LID, BATTERY CASE	
29	3-385-869-01	CABINET (REAR)	
30	3-345-648-03	SCREW (M1.4X4.0), TOOTHED LOCK	
31	3-334-565-01	SCREW (B1.7X10), TAPPING	
32	3-358-363-11	PLATE, BLIND	
33	3-331-603-01	FOOT	
34	3-385-857-01	KNOB (F-PB)	
35	3-385-871-01	PAPER, SHIELD	
36	3-386-078-02	SCREW	
D401	8-719-918-65	LED GL-1PR102	
MIC901	1-542-124-31	MICROPHONE, ELECTRET CONDENSER	
SP901	1-544-657-11	SPEAKER (3.6CM)	

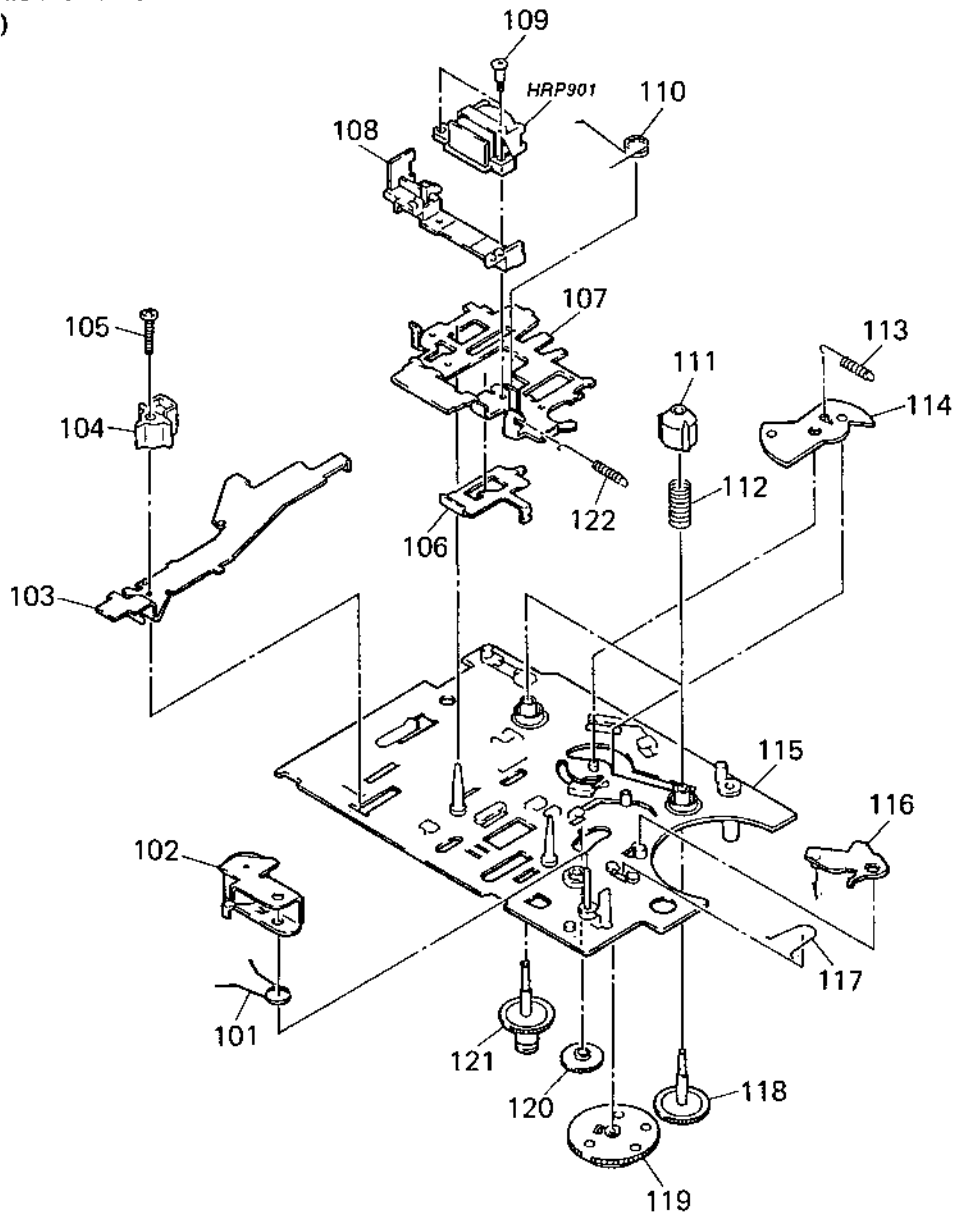
5-2. MECHANISM SECTION-1 (MT-S63)



Ref. No.	Part No.	Description	Remark
51	3-385-743-01	WASHER	
52	3-385-753-01	WASHER	
53	3-385-732-01	SPRING	
54	3-385-733-01	SPRING	
55	X-3366-064-1	ASSY, FLYWHEEL	
56	3-385-754-01	P WASHER	
57	3-385-748-01	BRACKET, MOTOR	
58	3-385-749-01	RUBBER, MOTOR	
59	3-385-750-01	SCREW	
60	3-385-751-01	SCREW	
61	3-385-746-01	BUSH, GEAR	
62	3-385-744-01	LEVER, AS	
63	3-385-752-01	BELT	
64	X-3366-063-1	ASSY, FRICTION	
65	3-385-734-01	SPRING	

Ref. No.	Part No.	Description	Remark
* 66	3-385-735-01	LEVER, FR	
67	3-385-728-01	SCREW	
68	3-385-727-01	GEAR, FF	
69	3-385-745-01	SPRING	
70	3-385-742-01	SPRING	
* 71	3-385-741-01	GUIDE, LEVER	
* 72	3-385-740-01	LEVER, FF	
* 73	3-385-731-01	LEVER, STOP	
* 74	3-385-739-01	LEVER, REW	
* 75	3-385-737-01	LEVER, LOCK	
* 76	3-385-736-01	LEVER, SWITCH	
77	3-385-730-01	ARM, REC	
78	3-385-738-01	SPRING	
M901	X-3366-095-1	MOTOR, ASSY	
S104	1-692-400-11	SWITCH, LEAF (POWER)	

5-3. MECHANISM SECTION-2
(MT-S63)



Ref. No.	Part No.	Description	Remark	Ref. No.	Part No.	Description	Remark
101	3-385-726-01	SPRING		113	3-385-717-01	SPRING	
102	X-3366-062-1	ASSY, PINCH ARM		114	X-3366-060-1	ASSY, CENTER ARM	
* 103	3-385-724-01	LEVER, REC		115	X-3366-058-1	ASSY, MECHA CHASSIS	
104	X-3366-061-1	ASSY, E/H C		116	X-3366-059-1	ASSY, PLAY ARM	
105	3-385-725-01	SCREW		117	3-385-712-01	SPRING	
* 106	3-385-719-01	PLATE, PLAY		118	3-385-713-01	GEAR, REEL	
* 107	3-385-718-01	CHASSIS, HEAD		119	X-3366-065-1	ASSY, GEAR FR	
108	3-385-721-01	GUIDE, HEAD		120	3-385-729-01	GEAR, PLAY	
109	3-385-723-01	SCREW		121	3-385-714-01	GEAR, REEL	
110	3-385-720-01	SPRING		122	3-385-756-01	SPRING	
111	3-385-716-01	REEL					
112	3-385-715-01	SPRING					
				HRP901	1-543-607-21	HEAD, MAGNETIC (REC/PB)	

MAIN

**SECTION 6
ELECTRICAL PARTS LIST**

NOTE :

- Due to standardization, replacements in the parts list may be different from the parts specified in the diagrams or the components used on the set.
- -XX, -X mean standardized parts, so they may have some difference from the original one.
- RESISTORS
All resistors are in ohms
METAL : Metal-film resistor
METAL OXIDE : Metal oxide-film resistor
F : nonflammable

- Items marked " * " are not stocked since they are seldom required for routine service. Some delay should be anticipated when ordering these items.
- SEMICONDUCTORS
In each case, μ : μ , for example :
uA..... : μ A....., uPA..... : μ PA.....
uPB..... : μ PB....., uPC..... : μ PC.....
uPD..... : μ PD.....
- CAPACITORS
uF : μ F
- COILS
uH : μ H

The components identified by mark Δ or dotted line with mark Δ are critical for safety. Replace only with part number specified.

When indicating parts by reference number, please include the board.

Ref. No.	Part No.	Description	Remark	Ref. No.	Part No.	Description	Remark
*	A-3016-287-A	MAIN BOARD, COMPLETE *****					
		< CAPACITOR >					
C101	1-126-301-11	ELECT	1uF 20% 50V	C401	1-164-156-11	CERAMIC CHIP	0. 1uF 25V
C102	1-126-160-11	ELECT	1uF 20% 50V	C402	1-162-968-11	CERAMIC CHIP	0. 0047uF 10% 50V
C103	1-162-950-11	CERAMIC CHIP	56PF 5% 50V	C403	1-164-005-11	CERAMIC CHIP	0. 47uF 25V
C104	1-162-964-11	CERAMIC CHIP	0. 001uF 10% 50V	C501	1-126-157-11	ELECT	10uF 20% 16V
C105	1-126-157-11	ELECT	10uF 20% 16V	C502	1-164-156-11	CERAMIC CHIP	0. 1uF 25V
C106	1-164-156-11	CERAMIC CHIP	0. 1uF 25V	C503	1-164-245-11	CERAMIC CHIP	0. 015uF 10% 25V
C107	1-104-402-21	ELECT	220uF 20% 4V	C504	1-162-964-11	CERAMIC CHIP	0. 001uF 10% 50V
C108	1-124-635-00	ELECT	220uF 20% 4V	C505	1-126-157-11	ELECT	10uF 20% 16V
C109	1-126-163-11	ELECT	4. 7uF 20% 50V	C506	1-164-232-11	CERAMIC CHIP	0. 01uF 50V
C110	1-162-963-11	CERAMIC CHIP	680PF 10% 50V	C601	1-126-160-11	ELECT	1uF 20% 50V
C111	1-163-989-11	CERAMIC CHIP	0. 033uF 10% 25V			< CONNECTOR >	
C112	1-164-232-11	CERAMIC CHIP	0. 01uF 50V	CN101	1-580-919-11	JACK, DC(POLARITY UNIFIED TYPE)(DC IN 3V)	
C113	1-164-156-11	CERAMIC CHIP	0. 1uF 25V			< DIODE >	
C114	1-124-635-00	ELECT	220uF 20% 4V	D101	8-719-800-76	DIODE 1SS226	
C115	1-164-346-11	CERAMIC CHIP	1uF 16V	D102	8-719-800-76	DIODE 1SS226	
C116	1-124-430-00	ELECT	22uF 20% 4V			< IC >	
C117	1-164-156-11	CERAMIC CHIP	0. 1uF 25V	IC101	8-759-701-02	IC NJM2073M	
C118	1-126-163-11	ELECT	4. 7uF 20% 50V	IC501	8-759-701-51	IC NJM2072M	
C119	1-162-968-11	CERAMIC CHIP	0. 0047uF 10% 50V	IC601	8-759-801-12	IC LA5523	
C120	1-162-964-11	CERAMIC CHIP	0. 001uF 10% 50V			< JACK >	
C122	1-162-964-11	CERAMIC CHIP	0. 001uF 10% 50V	J101	1-569-215-31	JACK (MIC)	
C123	1-126-154-11	ELECT	47uF 20% 6. 3V	J102	1-569-215-31	JACK (EAR)	
C124	1-124-463-00	ELECT	0. 1uF 20% 50V			< JUMPER RESISTOR >	
C126	1-163-009-11	CERAMIC CHIP	0. 001uF 10% 50V	JR1	1-216-295-00	METAL CHIP	0 5% 1/10W
C127	1-163-009-11	CERAMIC CHIP	0. 001uF 10% 50V	JR3	1-216-296-00	METAL CHIP	0 5% 1/8W
C128	1-164-156-11	CERAMIC CHIP	0. 1uF 25V	JR4	1-216-296-00	METAL CHIP	0 5% 1/8W
C129	1-162-964-11	CERAMIC CHIP	0. 001uF 10% 50V	JR5	1-216-296-00	METAL CHIP	0 5% 1/8W
C130	1-124-635-00	ELECT	220uF 20% 4V	JR6	1-216-296-00	METAL CHIP	0 5% 1/8W
C131	1-164-346-11	CERAMIC CHIP	1uF 16V	JR7	1-216-296-00	METAL CHIP	0 5% 1/8W
C132	1-162-964-11	CERAMIC CHIP	0. 001uF 10% 50V	JR9	1-216-295-00	METAL CHIP	0 5% 1/10W
C133	1-164-156-11	CERAMIC CHIP	0. 1uF 25V	JR10	1-216-296-00	METAL CHIP	0 5% 1/8W
C134	1-162-960-11	CERAMIC CHIP	220PF 10% 50V	JR11	1-216-296-00	METAL CHIP	0 5% 1/8W
C136	1-164-156-11	CERAMIC CHIP	0. 1uF 25V				

MAIN

MICROPHONE FLEXIBLE

Ref. No.	Part No.	Description	Remark		
JR12	1-216-296-00	METAL CHIP	0	5%	1/8W
JR14	1-216-296-00	METAL CHIP	0	5%	1/8W
JR15	1-216-296-00	METAL CHIP	0	5%	1/8W
JR16	1-216-295-00	METAL CHIP	0	5%	1/10W
JR17	1-216-296-00	METAL CHIP	0	5%	1/8W
JR18	1-216-295-00	METAL CHIP	0	5%	1/10W
JR20	1-216-295-00	METAL CHIP	0	5%	1/10W
JR21	1-216-296-00	METAL CHIP	0	5%	1/8W
JR24	1-216-295-00	METAL CHIP	0	5%	1/10W
JR25	1-216-296-00	METAL CHIP	0	5%	1/8W
JR27	1-216-296-00	METAL CHIP	0	5%	1/8W
JR29	1-216-296-00	METAL CHIP	0	5%	1/8W
JR30	1-216-296-00	METAL CHIP	0	5%	1/8W
< TRANSISTOR >					
Q101	8-729-402-32	TRANSISTOR	2SD1819A-R		
Q102	8-729-402-32	TRANSISTOR	2SD1819A-R		
Q401	8-729-402-84	TRANSISTOR	XN4601		
Q501	8-729-425-21	TRANSISTOR	UN5119		
Q502	8-729-402-81	TRANSISTOR	XN4501		
Q503	8-729-402-81	TRANSISTOR	XN4501		
< RESISTOR >					
R101	1-216-822-11	METAL CHIP	1.2K	5%	1/16W
R102	1-249-441-11	CARBON	100K	5%	1/4W
R103	1-249-424-11	CARBON	3.9K	5%	1/4W
R104	1-249-438-11	CARBON	56K	5%	1/4W
R105	1-249-438-11	CARBON	56K	5%	1/4W
R106	1-249-418-11	CARBON	1.2K	5%	1/4W
R107	1-216-838-11	METAL CHIP	27K	5%	1/16W
R108	1-249-430-11	CARBON	12K	5%	1/4W
R109	1-216-829-11	METAL CHIP	4.7K	5%	1/16W
R110	1-249-409-11	CARBON	220	5%	1/4W
R111	1-249-409-11	CARBON	220	5%	1/4W
R112	1-216-801-11	METAL CHIP	22	5%	1/16W
R113	1-216-813-11	METAL CHIP	220	5%	1/16W
R114	1-216-793-11	METAL GLAZE	4.7	5%	1/16W
R115	1-216-800-11	METAL GLAZE	18	5%	1/16W
R116	1-249-405-11	CARBON	100	5%	1/4W
R117	1-216-853-11	METAL CHIP	470K	5%	1/16W
R119	1-249-429-11	CARBON	10K	5%	1/4W
R120	1-249-423-11	CARBON	3.3K	5%	1/4W
R121	1-249-417-11	CARBON	1K	5%	1/4W
R122	1-249-408-11	CARBON	180	5%	1/4W
R123	1-216-823-11	METAL CHIP	1.5K	5%	1/16W
R125	1-249-405-11	CARBON	100	5%	1/4W
R126	1-215-442-00	METAL	7.5K	1%	1/6W
R128	1-216-821-11	METAL CHIP	1K	5%	1/16W

Ref. No.	Part No.	Description	Remark		
R401	1-216-856-11	METAL CHIP	820K	5%	1/16W
R402	1-249-429-11	CARBON	10K	5%	1/4W
R403	1-249-408-11	CARBON	180	5%	1/4W
R404	1-249-418-11	CARBON	1.2K	5%	1/4W
R405	1-216-845-11	METAL CHIP	100K	5%	1/16W
R501	1-216-833-11	METAL CHIP	10K	5%	1/16W
R502	1-249-429-11	CARBON	10K	5%	1/4W
R503	1-216-831-11	METAL CHIP	6.8K	5%	1/16W
R504	1-216-833-11	METAL CHIP	10K	5%	1/16W
R507	1-249-425-11	CARBON	4.7K	5%	1/4W
R508	1-249-429-11	CARBON	10K	5%	1/4W
R509	1-249-429-11	CARBON	10K	5%	1/4W
R601	1-216-832-11	METAL CHIP	8.2K	5%	1/16W
R602	1-216-994-11	METAL GLAZE	13K	5%	1/16W
R603	1-216-230-00	METAL GLAZE	22K	5%	1/8W
R604	1-216-834-11	METAL CHIP	12K	5%	1/16W
R605	1-216-829-11	METAL CHIP	4.7K	5%	1/16W
R606	1-216-829-11	METAL CHIP	4.7K	5%	1/16W
R607	1-216-842-11	METAL CHIP	56K	5%	1/16W
< VARIABLE RESISTOR >					
RV101	1-223-293-11	RES, VAR, CARBON	50K	(VOL)	
RV601	1-238-665-11	RES, ADJ, CERMET	22K	(TAPE SPEED)	
< SWITCH >					
S101	1-571-151-11	SWITCH, SLIDE	(REC/PB)		
S102	1-571-478-11	SWITCH, SLIDE	(VOR)		
S103	1-571-478-11	SWITCH, SLIDE	(MIC SENS)		
S601	1-570-675-11	SWITCH, SLIDE	(PAUSE/SWITCH)		
S602	1-692-397-21	SWITCH, SLIDE	(FAST PB/SWITCH)		
< THERMISTOR >					
TH601	1-808-980-11	THERMISTOR			
< THERMISTOR(POSITIVE) >					
THP601	1-810-007-11	THERMISTOR, POSITIVE			
< CONNECTOR >					
* W101	1-691-419-11	HOUSING, CONNECTOR	8P		

	1-646-496-11	MICROPHONE FLEXIBLE BOARD			

TCM-S67V

<u>Ref.No.</u>	<u>Part No.</u>	<u>Description</u>	<u>Remark</u>
		MISCELLANEOUS *****	
8	1-548-582-11	COUNTER, TAPE (SMALL TYPE)	
D401	8-719-918-65	LED GL-IPR102	
HRP901	1-543-607-21	HEAD, MAGNETIC (REC/PB)	
M901	X-3366-095-1	MOTOR ASSY	
MIC901	1-542-124-31	MICROPHONE, ELECTRET CONDENSER	
S104	1-692-400-11	SWITCH, LEAF (POWER)	
SP901	1-544-657-11	SPEAKER (3.6CM)	

		ACCESSORIES & PACKING MATERIALS *****	
	1-693-073-11	ADAPTOR, AC (AC-E350) (Canadian)	
*	3-387-183-01	CUSHION (TOP) (US)	
*	3-387-184-01	CUSHION (BOTTOM) (US)	
	3-756-196-11	MANUAL, INSTRUCTION (ENGLISH, FRENCH, SPANISH, PORTUGUESE) (Canadian, AEP, UK, E, Saudi Arabia)	
	3-756-196-21	MANUAL, INSTRUCTION (ENGLISH) (US)	
	3-756-196-41	MANUAL, INSTRUCTION (GERMAN, DUTCH, SWEDISH, ITALIAN) (AEP)	

TCM-S67V

SONY SERVICE MANUAL

US Model
Canadian Model
AEP Model
UK Model
E Model

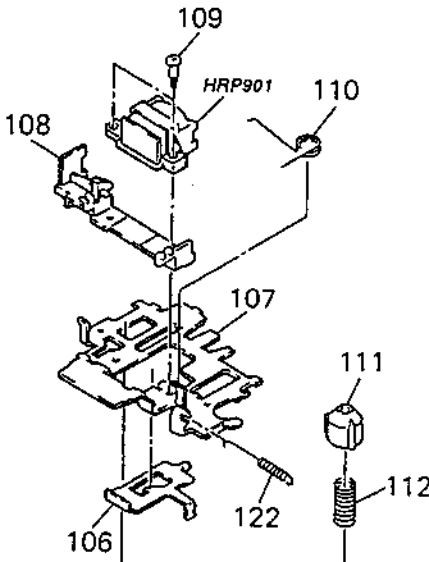
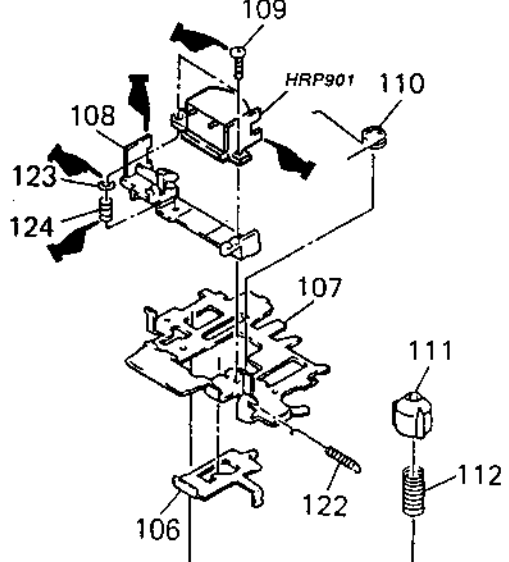
SUPPLEMENT-1

File this Supplement with the Service Manual.

Subject : Change of REC/PB Head

Page 11

 or under line : changed portion

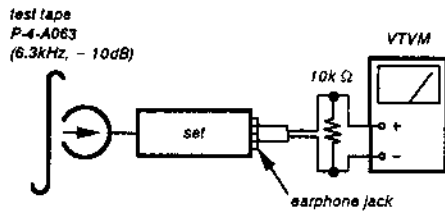
Former			New		
					
<u>Ref. No.</u>	<u>Part No.</u>	<u>Description</u>	<u>Ref. No.</u>	<u>Part No.</u>	<u>Description</u>
108	3-385-721-01	GUIDE, HEAD	108	<u>3-907-591-01</u>	GUIDE, HEAD
109	3-385-723-01	SCREW	109	<u>3-907-592-01</u>	SCREW
123	_____	_____	123	<u>3-907-593-01</u>	WASHER
124	_____	_____	124	<u>3-907-594-01</u>	SPRING
HRP901	1-543-607-21	HEAD, MAGNETIC (REC/PB)	HRP901	<u>1-543-410-11</u>	HEAD, MAGNETIC (REC/PB)

The record/playback head azimuth adjustment is requested due to this change.

Record/playback Head Azimuth Adjustment

Procedure :

1. Mode : Playback



2. Turn the adjustment screw to obtain the maximum reading on VTVM.

Note : Several peaks may appear, but take the maximum.

3. After the adjustment, lock the adjustment screw with suitable locking compound.

Adjustment Location :

