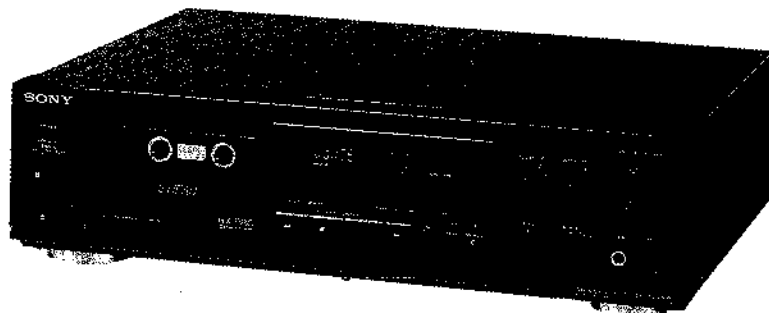


# TC-K630/K630ES

## SERVICE MANUAL

US Model  
AEP Model  
UK Model  
E Model  
TC-K630ES

Canadian Model  
TC-K630



|                                    |               |
|------------------------------------|---------------|
| Model Name Using Similar Mechanism | TC-W 550      |
| Tape Transport Mechanism Type      | TCM-CMAY B-27 |

### SPECIFICATIONS

|                                   |  |
|-----------------------------------|--|
| Recording system                  | 4-track 2-channel stereo   |
| Bias                              | AC bias  |
| Heads                             | Erase head × 1 (F & F head)<br>Record head × 1 (Permalloy head)<br>Playback head × 1 (LA head) |
| Motors                            | Capstan motor × 1 (DC servo motor)<br>Reel motor × 1 (DC motor)                                |
| Wow and flutter                   | 0.05% WRMS (NAB)   |
| Fast-forward and rewind time      | Approx. 90 sec. (with C-60 cassette)   |
| Frequency response (DOLBY NR OFF) |  |

|                                     |  |
|-------------------------------------|--|
| TYPE IV cassette<br>(Sony METAL-ES) | 20-21,000 Hz (±3 dB)<br>20-16,000 Hz (OVU recording) |
| TYPE II cassette<br>(Sony UX-S)     | 20-19,000 Hz (±3 dB)                                 |
| TYPE I cassette<br>(Sony HF-S)      | 20-17,000 Hz (±3 dB)                                 |

Signal-to-noise ratio (NAB, at peak level)

| Cassette                | Dolby NR switch |           |           |
|-------------------------|-----------------|-----------|-----------|
|                         | OFF             | B-TYPE ON | C-TYPE ON |
| TYPE IV (Sony METAL-ES) | 59 dB           | 66 dB     | 72 dB     |
| TYPE II (Sony UX-S)     | 58 dB           | 65 dB     | 71 dB     |
| TYPE I (Sony HF-S)      | 55 dB           | 62 dB     | 68 dB     |

Total harmonic distortion

1.0% (with Sony METAL-ES cassette)

### Inputs

|                              |                 |                  |
|------------------------------|-----------------|------------------|
| Line inputs<br>(phono jacks) | Sensitivity     | 77.5 mV (-20 dB) |
|                              | Input impedance | 50 k ohms        |

### Outputs

|                                   |                    |   |
|-----------------------------------|--------------------|---|
| Line outputs<br>(phono jacks)     | Rated output level | 0.44 V (-5 dB) at a load impedance<br>47 k ohms |
|                                   | Load impedance     | Over 10 k ohms                                  |
| Headphones<br>(stereo phone jack) | Output level       | 0-2.5 mW at a load impedance of<br>32 ohms      |

### General

|                    |   |
|--------------------|---|
| Power requirements | 120 V AC, 60 Hz   |
| Power consumption  | 20 W  |
| Dimensions         | Approx. 430 × 118 × 345 mm (w/h/d)<br>(17 × 4 <sup>3</sup> / <sub>4</sub> × 13 <sup>5</sup> / <sub>8</sub> inches)<br>including projecting parts and controls |
| Weight             | Approx. 5.2 kg (11 lbs 8 oz)  |

### Supplied accessory

Audio connecting cord (2)

Design and specifications subject to change without notice.

STEREO CASSETTE DECK  
**SONY**®



## FEATURES



The TC-K630ES is a cassette deck equipped with a laseramorphous magnetic alloy head using LC-OFC winding for playback, and features the following functions.

- **3-head system (separate record, playback and erase heads)** allows you to instantly check the recorded sound while recording is in progress.
- **Bias control** adjusts bias current to the optimum level and brings out the best in every tape.
- **The Dolby HX PRO\* system** improves the linearity of the tape's high range response during recording.
- **Easy-to-read digital linear counter** shows the elapsed recording or playing time.
- **AMS, blank skip and music scan functions** provide easy access to a desired selection.


\* Dolby noise reduction and HX Pro headroom extension manufactured under license from Dolby Laboratories Licensing Corporation. HX Pro originated by Bang & Olufsen.

"DOLBY", the double-D symbol  "HX PRO" are trademarks of Dolby Laboratories Licensing Corporation.

### SAFETY-RELATED COMPONENT WARNING!!

COMPONENTS IDENTIFIED BY MARK  OR DOTTED LINE WITH MARK  ON THE SCHEMATIC DIAGRAMS AND IN THE PARTS LIST ARE CRITICAL TO SAFE OPERATION. REPLACE THESE COMPONENTS WITH SONY PARTS WHOSE PART NUMBERS APPEAR AS SHOWN IN THIS MANUAL OR IN SUPPLEMENTS PUBLISHED BY SONY.

ATTENTION AU COMPOSANT AYANT RAPPORT À LA SÉCURITÉ!

LES COMPOSANTS IDENTIFIÉS PAR UNE MARQUE  SUR LES DIAGRAMMES SCHÉMATIQUES ET LA LISTE DES PIÈCES SONT CRITIQUES POUR LA SÉCURITÉ DE FONCTIONNEMENT. NE REMPLACER CES COMPOSANTS QUE PAR DES PIÈCES SONY DONT LES NUMÉROS SONT DONNÉS DANS CE MANUEL OU DANS LES SUPPLÉMENTS PUBLIÉS PAR SONY.

## SAFETY CHECK-OUT

After correcting the original service problem, perform the following safety check before releasing the set to the customer:

Check the antenna terminals, metal trim, "metallized" knobs, screws, and all other exposed metal parts for AC leakage. Check leakage as described below.

### LEAKAGE TEST

The AC leakage from any exposed metal part to earth ground and from all exposed metal parts to any exposed metal part having a return to chassis, must not exceed 0.5 mA (500 microamperes). Leakage current can be measured by any one of three methods.

1. A commercial leakage tester, such as the Simpson 229 or RCA WT-540A. Follow the manufacturers' instructions to use these instruments.
2. A battery-operated AC milliammeter. The Data Precision 245 digital multimeter is suitable for this job.
3. Measuring the voltage drop across a resistor by means of a VOM or battery-operated AC voltmeter. The "limit" indication is 0.75 V, so analog meters must have an accurate low-voltage scale. The Simpson 250 and Sanwa SH-63Trd are examples of a passive VOM that is suitable. Nearly all battery operated digital multimeters that have a 2V AC range are suitable. (See Fig. A)

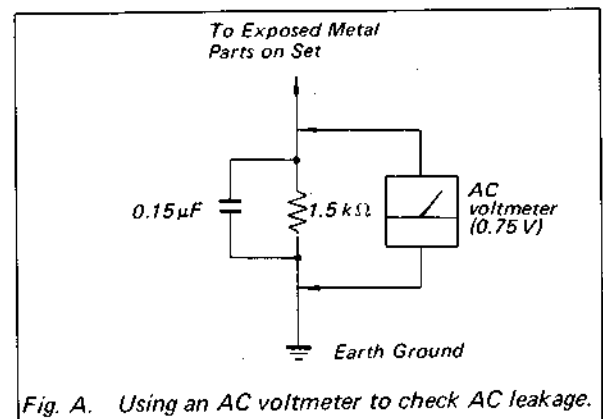


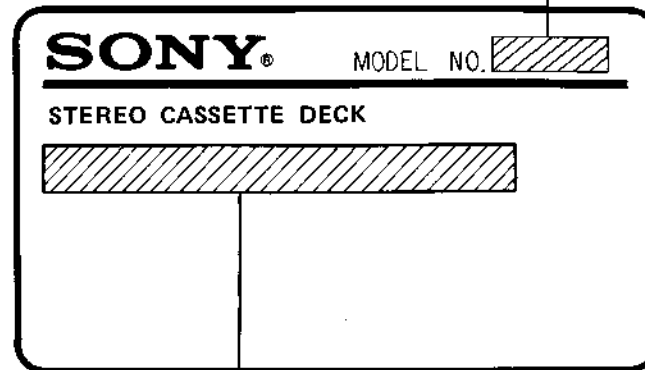
Fig. A. Using an AC voltmeter to check AC leakage.

## SECTION 1 GENERAL

### TABLE OF CONTENTS

| Section                          | Title  | Page |
|----------------------------------|--|------|
| Specifications                   |  | 1    |
| Features                         |  | 2    |
| <b>1. GENERAL</b>                |  |      |
| 1-1.                             | Model Identification                           | 3    |
| 1-2.                             | Location of Controls                           | 3    |
| <b>2. MECHANICAL ADJUSTMENTS</b> |  | 4    |
| <b>3. ELECTRICAL ADJUSTMENTS</b> |  | 4    |
| <b>4. DIAGRAMS</b>               |  |      |
| 4-1.                             | Semiconductor Lead Layouts                     | 8    |
| 4-2.                             | Printed Wiring Boards                          | 9    |
| 4-3.                             | Audio/System Control Section Schematic Diagram | 13   |
| 4-4.                             | Display Section Schematic Diagram              | 18   |
| <b>5. EXPLODED VIEWS</b>         |  | 20   |
| <b>6. ELECTRICAL PARTS LIST</b>  |  | 24   |

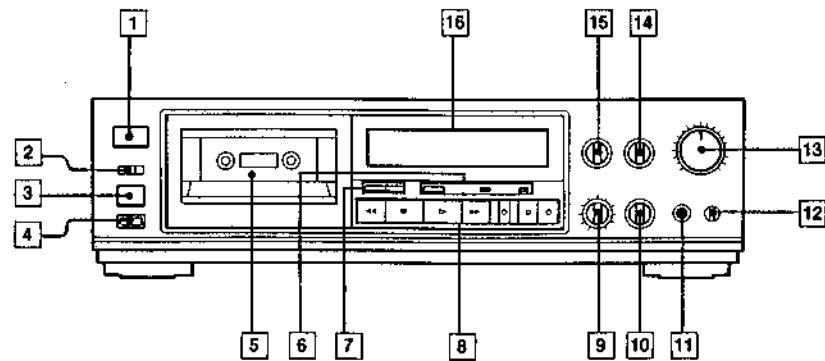
### 1-1. MODEL IDENTIFICATION (Specification Label)



TC-K603  
TC-K630ES

Canadian model: AC 120V 60Hz 20W (TC-K630)  
US model: AC 120V 60Hz 20W  
AEP model: AC 220V~50/60Hz 20W  
UK model: AC 240V~50/60Hz 20W  
E model: AC 120, 220, 240V~50/60Hz 20W

### 1-2. LOCATION OF CONTROLS



- 1 POWER switch
- 2 TIMER switch
- 3 Remote sensor\*
- 4 (eject) button
- 5 Cassette holder
- 6 TAPE OPERATION button  
AMS/BLANK SKIP and MUSIC SCAN Indicators
- 7 COUNTER buttons  
RESET button/MEMORY button
- 8 Tape operation buttons and indicators  
◀ (rewind) button  
■ (stop) button  
▶ (play) button and indicator  
▶▶ (fast-forward) button  
● REC (record) button and indicator  
⏸ PAUSE button and indicator  
○ REC MUTE (record muting) button
- 9 BIAS (bias adjust) control
- 10 MONITOR switch
- 11 PHONES (headphones) jack (stereo phone jack)
- 12 LEVEL (headphones level) control
- 13 REC LEVEL (recording level) control
- 14 MPX FILTER switch
- 15 DOLBY NR switch
- 16 LINEAR COUNTER and PEAK PROGRAM METERS

\* You can remotely control this cassette deck with:  
—A remote commander that has an mark and comes with a Sony amplifier or receiver and which can be used to control a cassette deck.  
—An optional Sony remote commander that has an mark.

## SECTION 2 MECHANICAL ADJUSTMENTS

### PRECAUTION

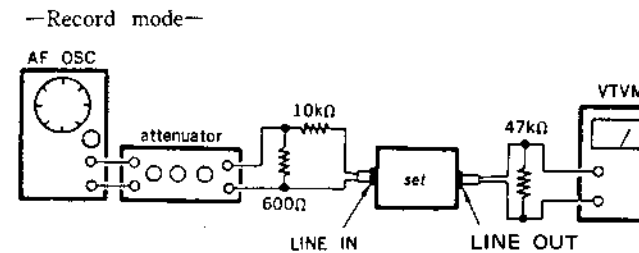
- Clean the following parts with a denatured-alcohol-moistened swab:  
record/playback head pinch roller  
erase head rubber belts  
capstan idlers
- Demagnetize the record/playback head with a head demagnetizer. (Do not bring the head demagnetizer close to the erase head.)
- Do not use a magnetized screwdriver for the adjustments.
- After the adjustments, apply suitable locking compound to the parts adjusted.
- The adjustments should be performed with the rated power supply voltage unless otherwise noted.

### Torque Measurement

| Torque                  | Torque meter | Meter reading                   |
|-------------------------|--------------|---------------------------------|
| Forward                 | CQ-102C      | 30-70g·cm<br>(0.42-0.97oz·inch) |
| Forward<br>back tension | CQ-102C      | 2-6g·cm<br>(0.028-0.083oz·inch) |
| FF/REW                  | CQ-201B      | 90-180g·cm<br>(1.25-2.5oz·inch) |

## SECTION 3 ELECTRICAL ADJUSTMENTS

- The adjustment should be performed in the publication (Be sure to make playback adjustment at first.)
- The adjustment and measurement should be performed for both L-CH and R-CH.
  - Switch position  
DOLBY NR switch: OFF  
TIMER switch: OFF
  - Standard record position  
Deliver the standard input signal level to the input jack and set the REC LEVEL control to obtain the standard output signal level as follows.



### • Standard Input Level

| Input terminal     | LINE IN       |
|--------------------|---------------|
| source impedance   | 10kΩ          |
| input signal level | 0.25V (-10dB) |

### • Standard Output Level

| Output terminal     | LINE OUT     |
|---------------------|--------------|
| load impedance      | 47kΩ         |
| output signal level | 0.44V (-5dB) |

### Test Tape

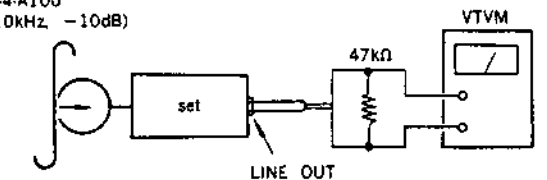
| Tape     | Contents     | Use                                     |
|----------|--------------|---|
| P-4-A100 | 10kHz, -10dB | Record/Playback Head Azimuth Adjustment |
| WS-48B   | 3kHz, 0dB    | Tape Speed Adjustment                   |
| P-4-L300 | 315Hz, 0dB   | Playback Level Adjustment               |

### Record/Playback Head Azimuth Adjustment

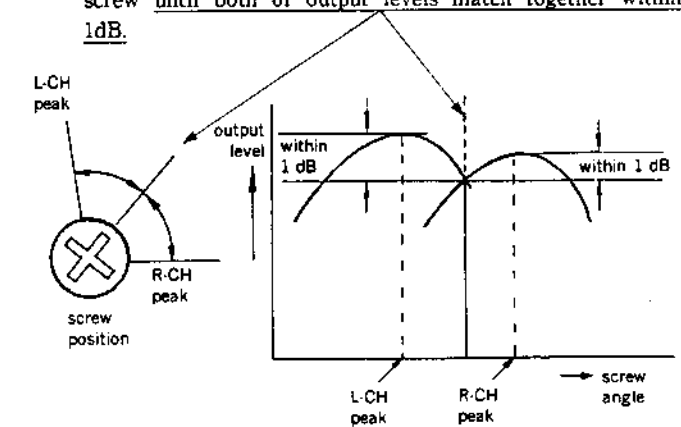
#### procedure:

- Playback Mode

test tape  
P-4-A100  
(10kHz -10dB)

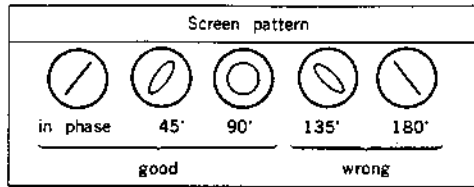
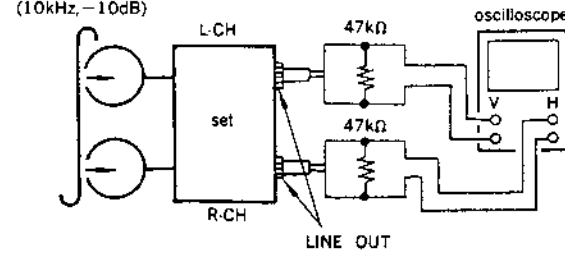


- Turn the adjustment screw for the maximum output levels. If these levels do not match, turn the adjustment screw until both of output levels match together within 1dB.



### 3. Phase Check

Playback mode  
test tape  
P-4-A100  
(10kHz, -10dB)



4. After the adjustment, lock the adjustment screw with suitable locking compound.

Adjustment Location: -record/playback head-

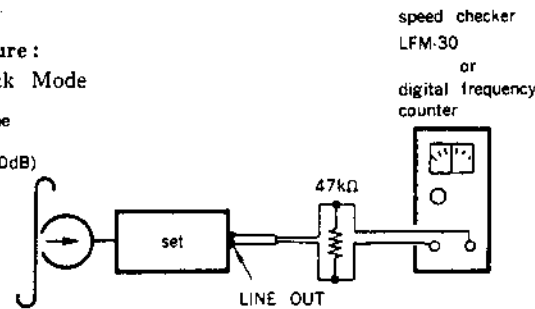


### Tape Speed Adjustment

Procedure:

Playback Mode

test tape  
WS-48B  
(3kHz, 0dB)



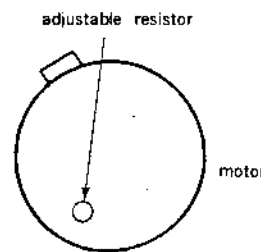
Specification:

| Speed checker | Digital frequency counter |
|---------------|---------------------------|
| ±0.5%         | 2.985-3.015Hz             |

Frequency difference between the beginning and the end of the tape should be within 0.08% (0.24Hz).

Adjustment Location:

adjustment the adjustable resistor of built in motor (adjustment by the insert to driver Speed in fastest that turn the clockwise.)

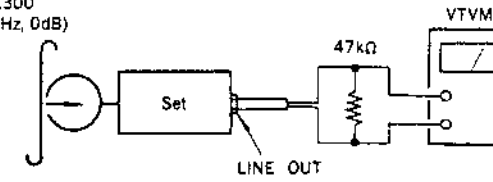


### Playback Level Adjustment

Procedure:

Playback mode

test tape  
P-4-L300  
(315Hz, 0dB)



Specification:

Adjust RV101 (L-CH), RV201 (R-CH) so that within adjustment level as follows.

LINE OUT level: 0.41 to 0.46V

(-5.5 to -4.5dB)

Level Difference between Channels: Within 0.5dB

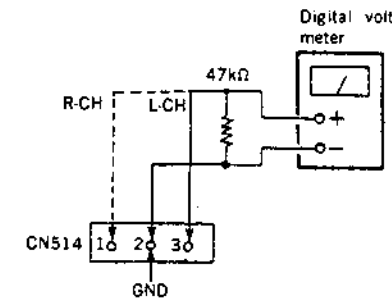
Confirm the LINE OUT level does not change in playback mode while changing the mode from playback to stop several times.

### Bias Consumption Current Adjustment

Bias Consumption current adjustment is sure to front of record bias adjustment.

Behind the bias consumption current adjustment, record bias adjustment do over again.

1. Set the center to RV152 (L-CH), RV252 (R-CH) and REC/FWD for no-signal.
2. Connect CNS14 with digital volt meter, adjust T151 (L-CH), T251 (R-CH) so that the minimum or digital volt meter.



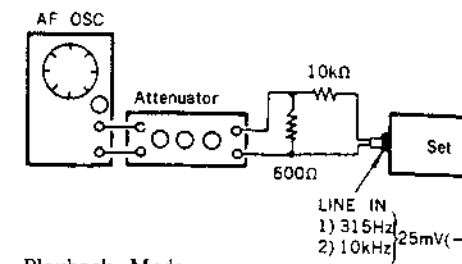
### Record Bias Adjustent

Setting:

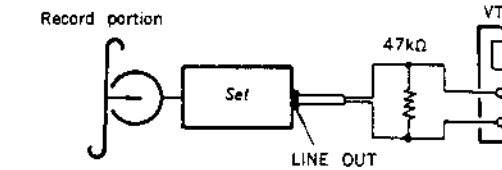
REC LEVEL knob shall be the specified rec

Procedure:

1. Record Mode



2. Playback Mode



Adjust RV152 (L-CH), RV252 (R-CH) so that playback level at 10kHz is 0.5±0.3dB.

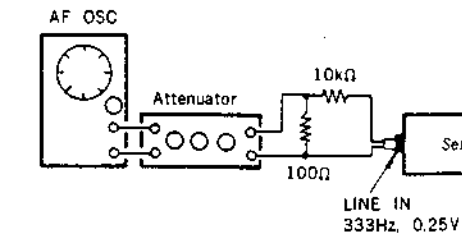
### Record Level Adjustment

Setting:

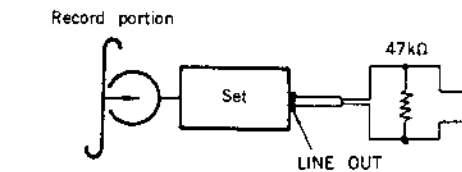
REC LEVEL knob shall be at the specified

Procedure:

1. Record Mode



2. Playback Mode



Specification:

Adjust RV151 (L-CH), RV152 (R-CH) so that within adjustment level as follows.

LINE OUT Level: CS-122

0.42 to 0.45V

(-5.3 to -4.7dB)

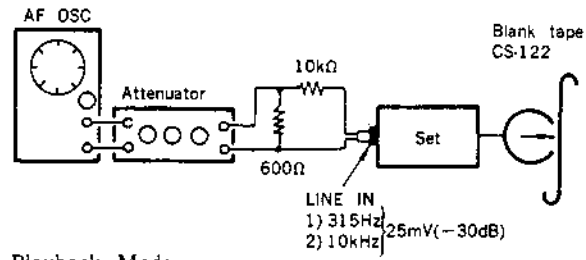
**Record Bias Adjustent**

**Setting :**

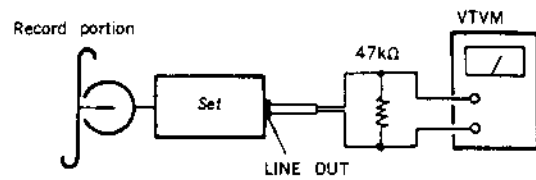
REC LEVEL knob shall be the specilied record position.

**Procedure :**

1. Record Mode



2. Playback Mode



Adjust RV152 (L-CH), RV252 (R-CH) so that playback output of 10kHz is  $0.5 \pm 0.3$ dB.

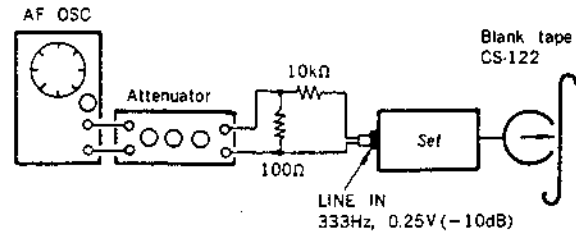
**Record Level Adjustment**

**Setting :**

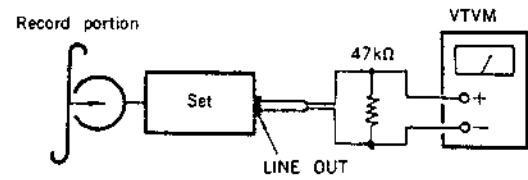
REC LEVEL knob shall be at the specified record position.

**Procedure :**

1. Record Mode



2. Playback Mode

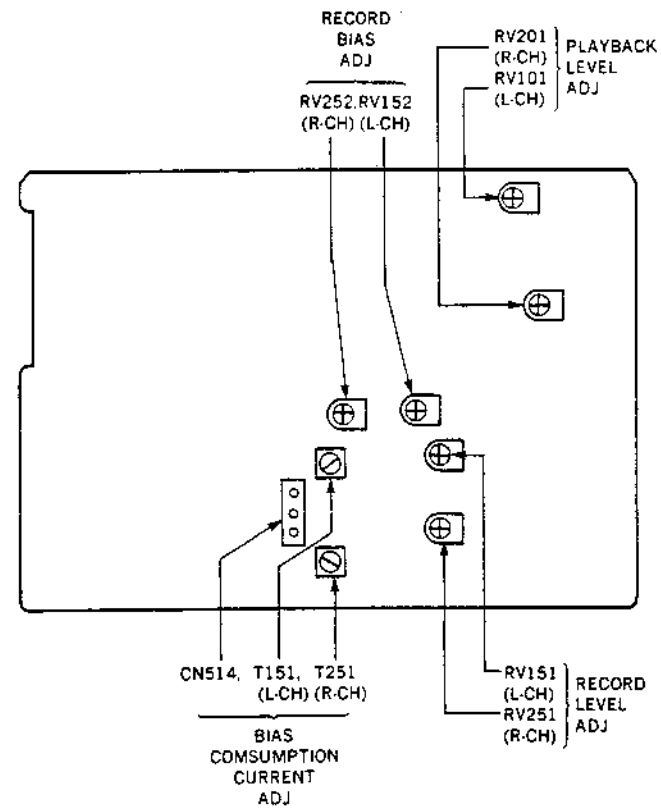


**Specification :**

Adjust RV151 (L-CH), RV152 (R-CH) so that within adjustment level as follows.

LINE OUT Level: CS-122  
 0.42 to 0.45V  
 (-5.3 to -4.7dB)

Adjustment Location : main board



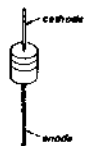
SECTION 4  
DIAGRAMS

4-1. SEMICONDUCTOR LEAD LAYOUTS • Semiconductor Location

DTA114ES  
DTA144ES  
DTB114ES  
DTC114ES  
DTC143TS  
DTC144ES  
2SD2144S



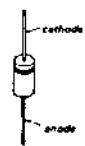
HZS6A1L  
HZS7B2L  
HZS7C1L  
HZS9C1L  
HZS12C1L



2SA1150  
2SC2785



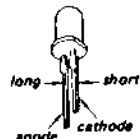
US1060M  
10E2N



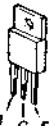
2SA1409-L  
2SA733  
2SB1013  
2SC3623-L  
2SD1387



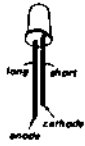
GL-5HY41



2SB1094-L  
2SD1585-L



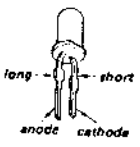
SEL1210S  
SEL1410E



2SB1116



SEL2410E-C



2SD774-3



| Ref. No. | Location | Ref. No. | Location | Ref. No. | Location |
|----------|----------|----------|----------|----------|----------|
| D301     | E-18     | D906     | E-12     | Q654     | F-26     |
| D351     | F-13     | D907     | E-12     | Q655     | F-26     |
| D401     | F-18     |          |          | Q701     | C-30     |
| D451     | F-13     | IC501    | C-18     | Q702     | B-28     |
| D511     | H-18     | IC502    | C-20     | Q703     | B-29     |
| D512     | F-12     | IC511    | H-19     | Q704     | B-29     |
| D513     | F-12     | IC512    | H-21     | Q705     | B-27     |
| D514     | F-24     | IC513    | G-23     | Q706     | B-27     |
| D515     | F-21     | IC551    | F-20     | Q707     | B-30     |
| D516     | F-21     | IC552    | E-18     | Q708     | B-30     |
| D517     | F-21     | IC553    | F-16     | Q709     | B-30     |
| D701     | C-26     | IC651    | E-26     | Q710     | B-28     |
| D703     | C-30     | IC801    | G-28     | Q751     | B-24     |
| D704     | C-29     | IC802    | I-26     | Q752     | B-24     |
| D705     | B-28     | IC803    | I-29     | Q753     | B-23     |
| D706     | B-29     | JC804    | H-29     | Q754     | B-24     |
| D708     | C-26     | IC851    | E-29     | Q755     | C-23     |
| D709     | C-26     | IC901    | G-8      | Q756     | C-24     |
| D710     | A-29     | IC902    | F-13     | Q757     | C-24     |
| D711     | C-26     | IC903    | G-10     | Q801     | E-28     |
| D714     | B-30     | IC904    | G-32     | Q802     | F-28     |
| D715     | B-26     |          |          | Q803     | E-28     |
| D716     | A-26     | Q101     | B-19     | Q804     | H-27     |
| D717     | B-26     | Q151     | G-18     | Q805     | H-28     |
| D718     | B-26     | Q152     | F-22     | Q806     | H-28     |
| D751     | C-23     | Q201     | D-29     | Q807     | I-28     |
| D752     | B-26     | Q251     | I-18     | Q808     | I-28     |
| D753     | B-26     | Q252     | I-22     | Q809     | I-27     |
| D754     | B-26     | Q301     | E-19     | Q810     | I-28     |
| D755     | B-26     | Q401     | F-19     | Q811     | J-28     |
| D801     | E-29     | Q511     | F-22     | Q812     | I-29     |
| D802     | H-25     | Q512     | F-22     | Q851     | E-30     |
| D803     | E-28     | Q513     | F-22     | Q852     | I-28     |
| D804     | E-28     | Q514     | I-22     | Q901     | G-7      |
| D805     | D-28     | Q515     | F-23     | Q902     | G-7      |
| D806     | C-28     | Q516     | F-23     | Q903     | G-6      |
| D807     | I-28     | Q517     | F-24     | Q904     | G-6      |
| D808     | J-28     | Q518     | G-24     | Q905     | G-7      |
| D809     | F-27     | Q518     | E-23     | Q906     | G-8      |
| D851     | H-29     | Q519     | E-23     | Q907     | G-13     |
| D852     | I-29     | Q520     | E-22     | Q908     | G-11     |
| D901     | E-9      | Q521     | F-22     | Q909     | F-12     |
| D902     | E-11     | Q551     | F-20     | Q910     | F-11     |
| D903     | E-10     | Q651     | E-27     | Q1001    | B-2      |
| D904     | F-10     | Q652     | E-27     | Q1002    | B-5      |
| D905     | F-11     | Q653     | E-27     |          |          |

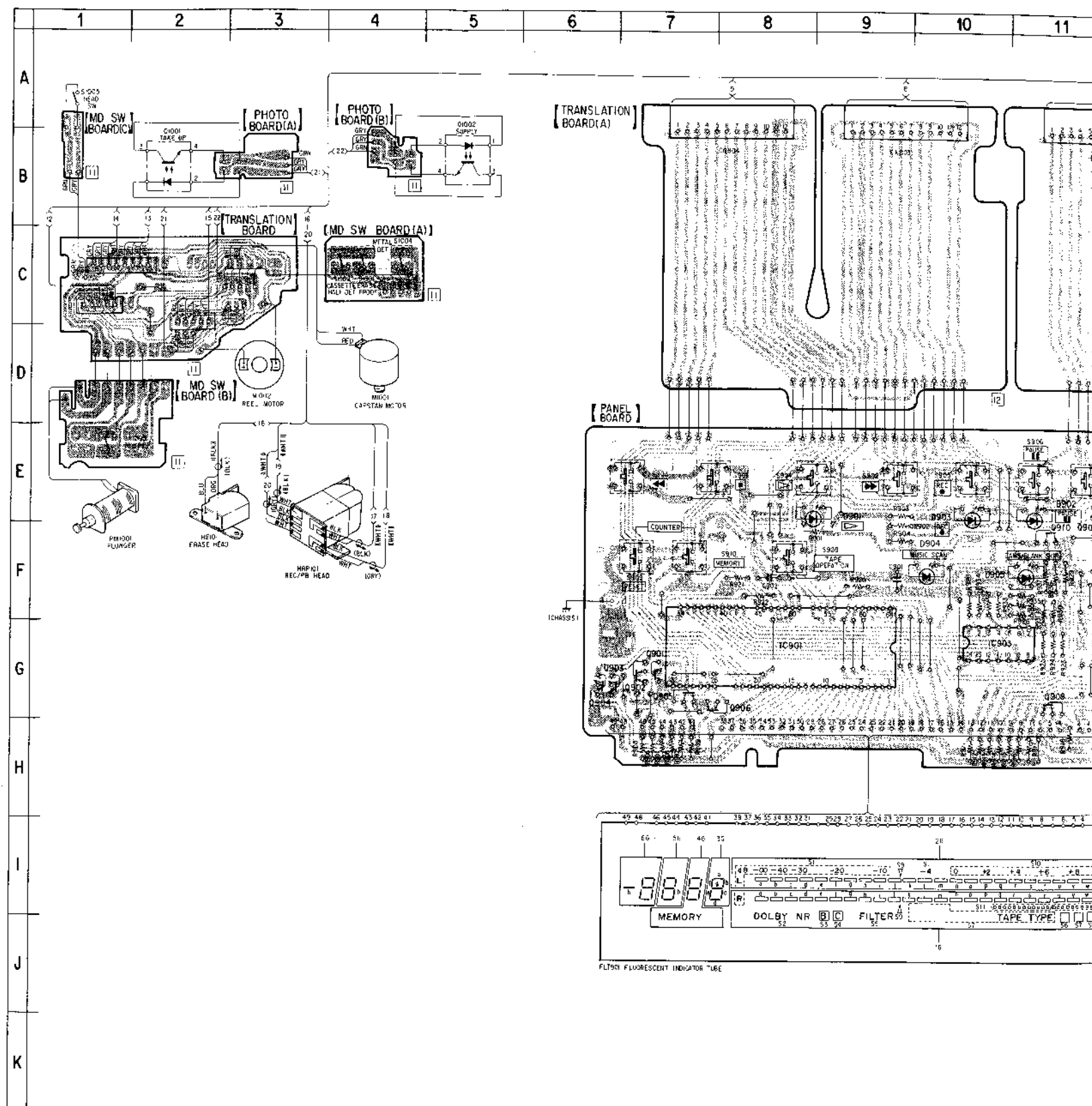
Note on Display Section Schematic Diagram:

- All capacitors are in  $\mu\text{F}$  unless otherwise noted.  $\text{pF}$ :  $\mu\mu\text{F}$  50WV or less are not indicated except for electrolytics and tantalums.
- All resistors are in  $\Omega$  and  $1/4\text{W}$  or less unless otherwise specified.
- % : indicates tolerance.
- $\Delta$  : internal component.
- Voltage and waveforms are dc with respect to ground under no-signal conditions. no mark: PLAY
- Voltages are taken with a VOM (Input impedance  $10\text{M}\Omega$ ). Voltage variations may be noted due to normal production tolerances.

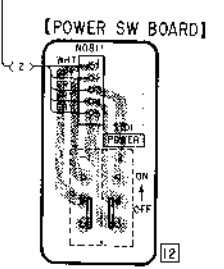
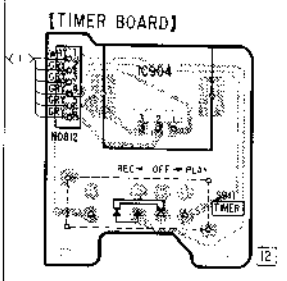
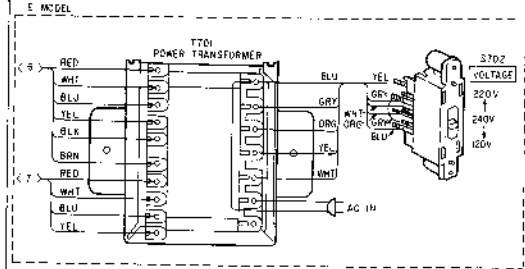
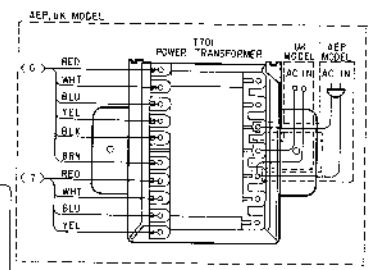
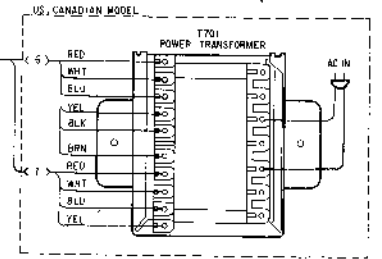
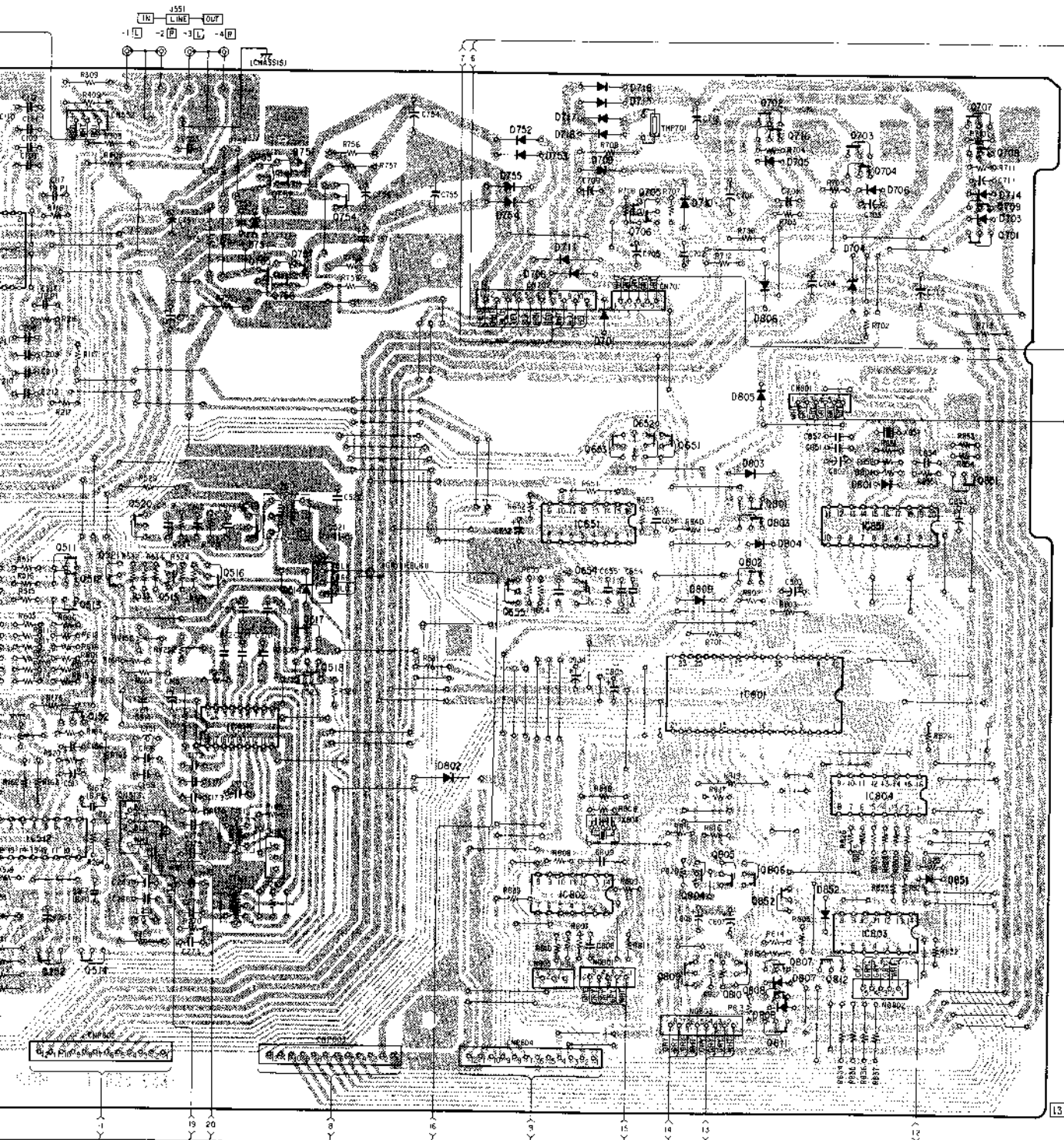
Note on Printed Wiring Boards:

- $\circ$  : parts extracted from the component side.
- $\square$  : indicates side identified with part number.

4-2. PRINTED WIRING BOARDS

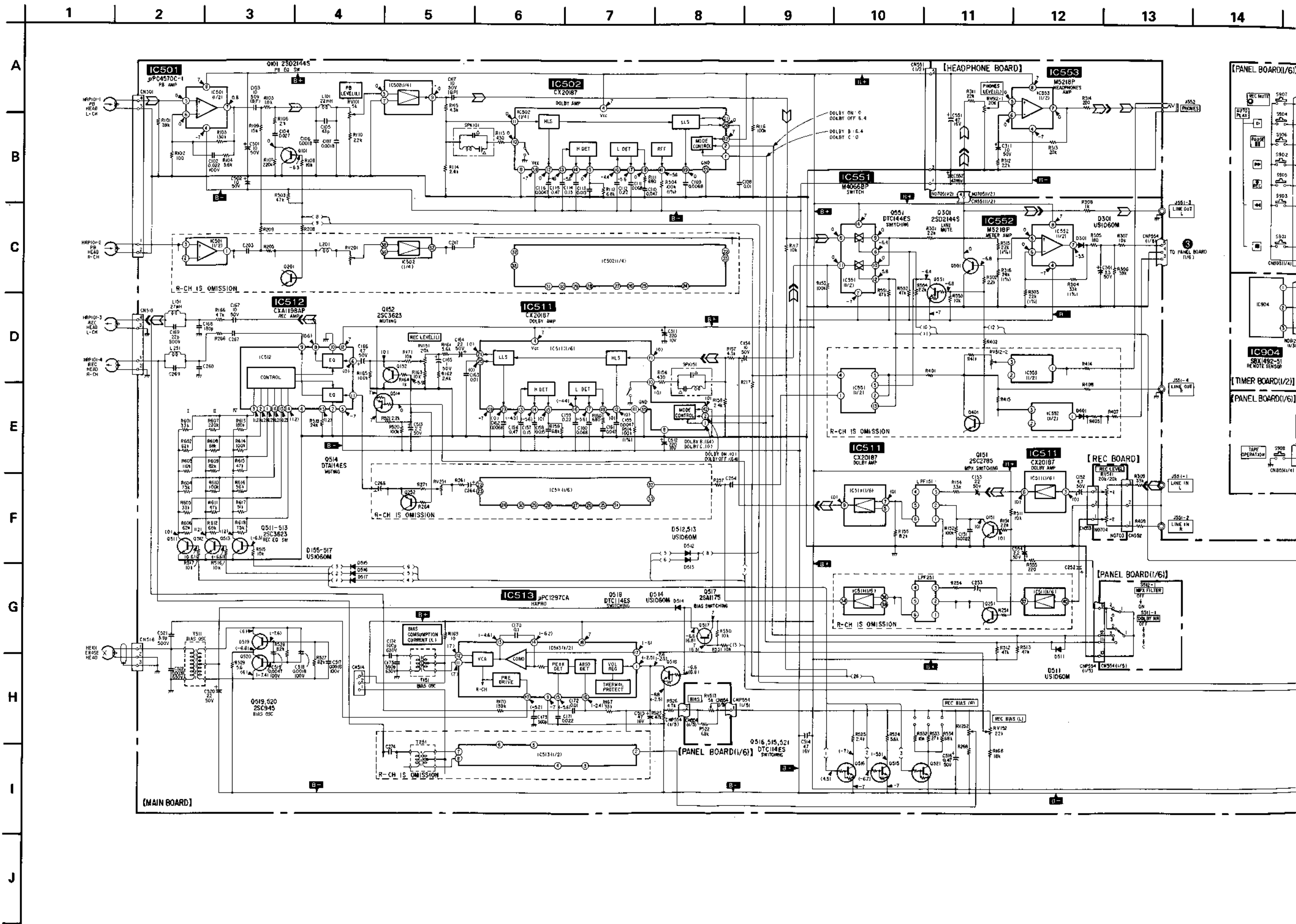


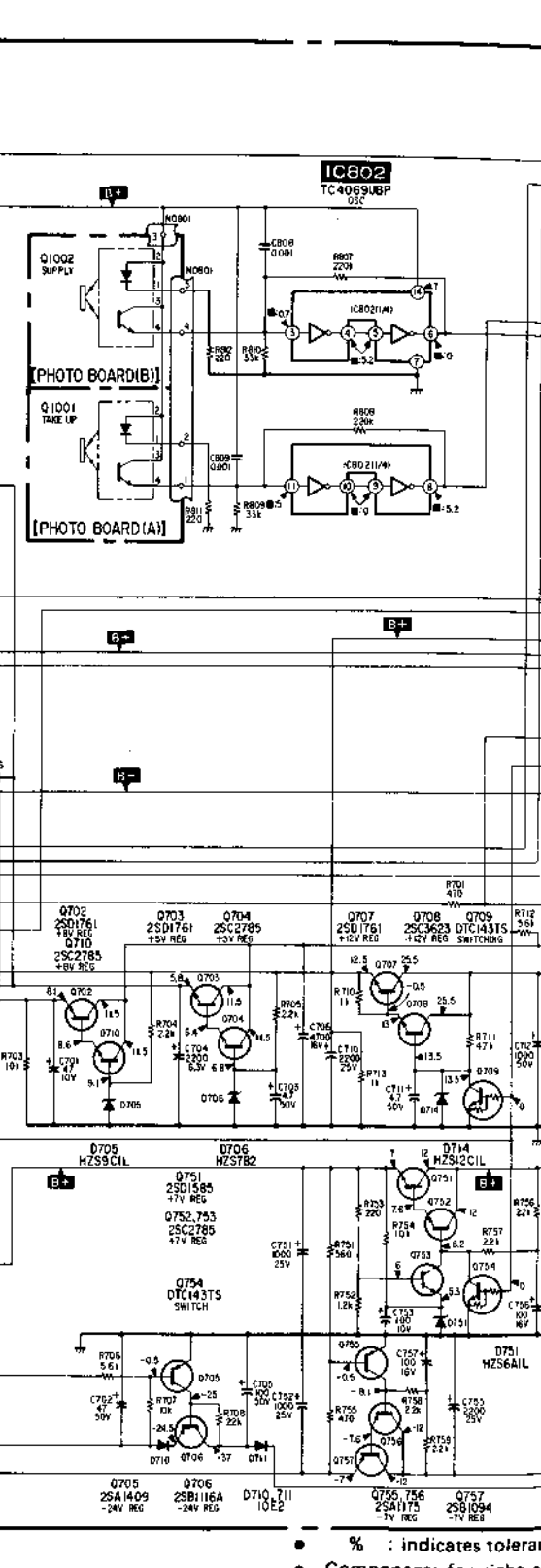
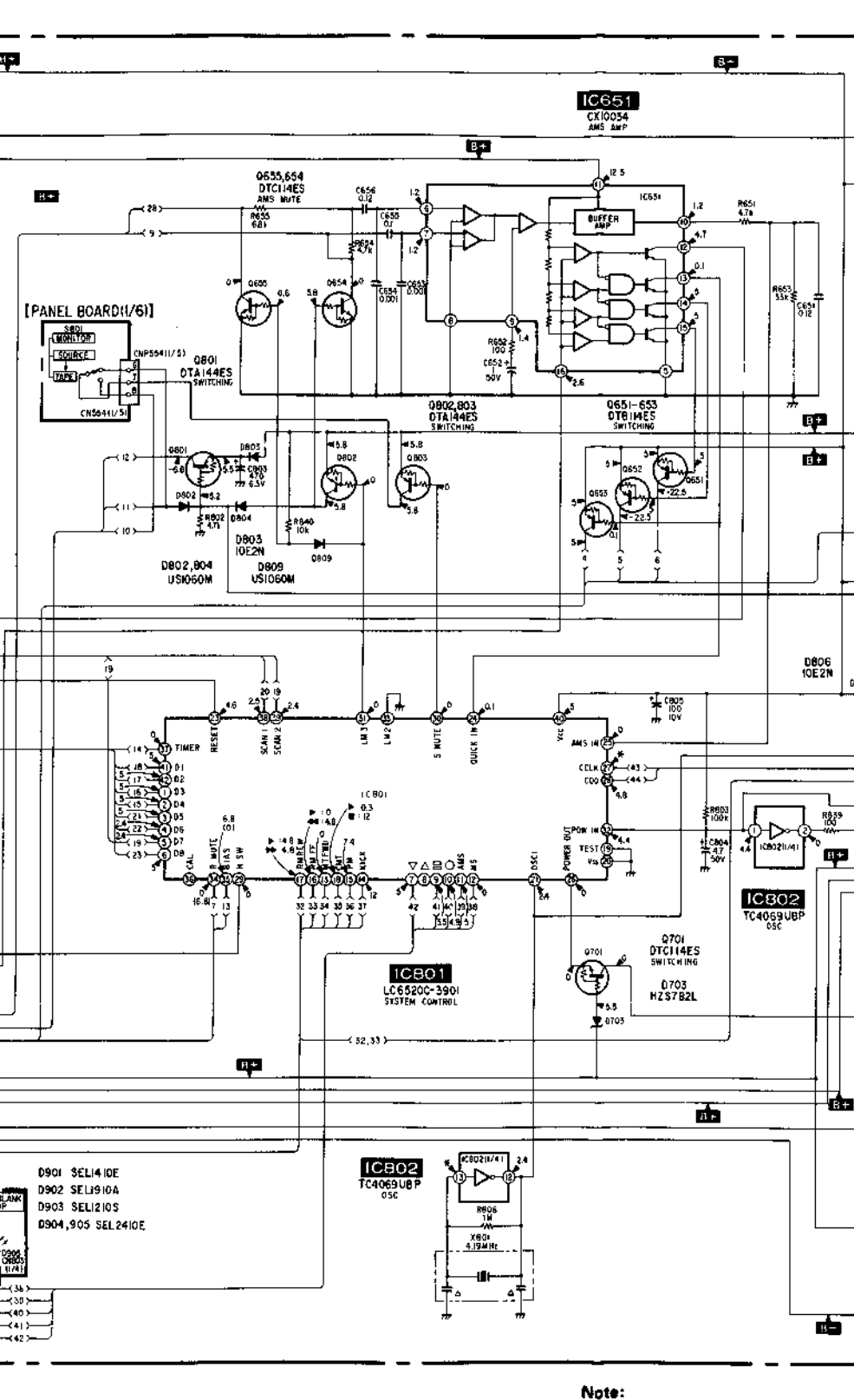
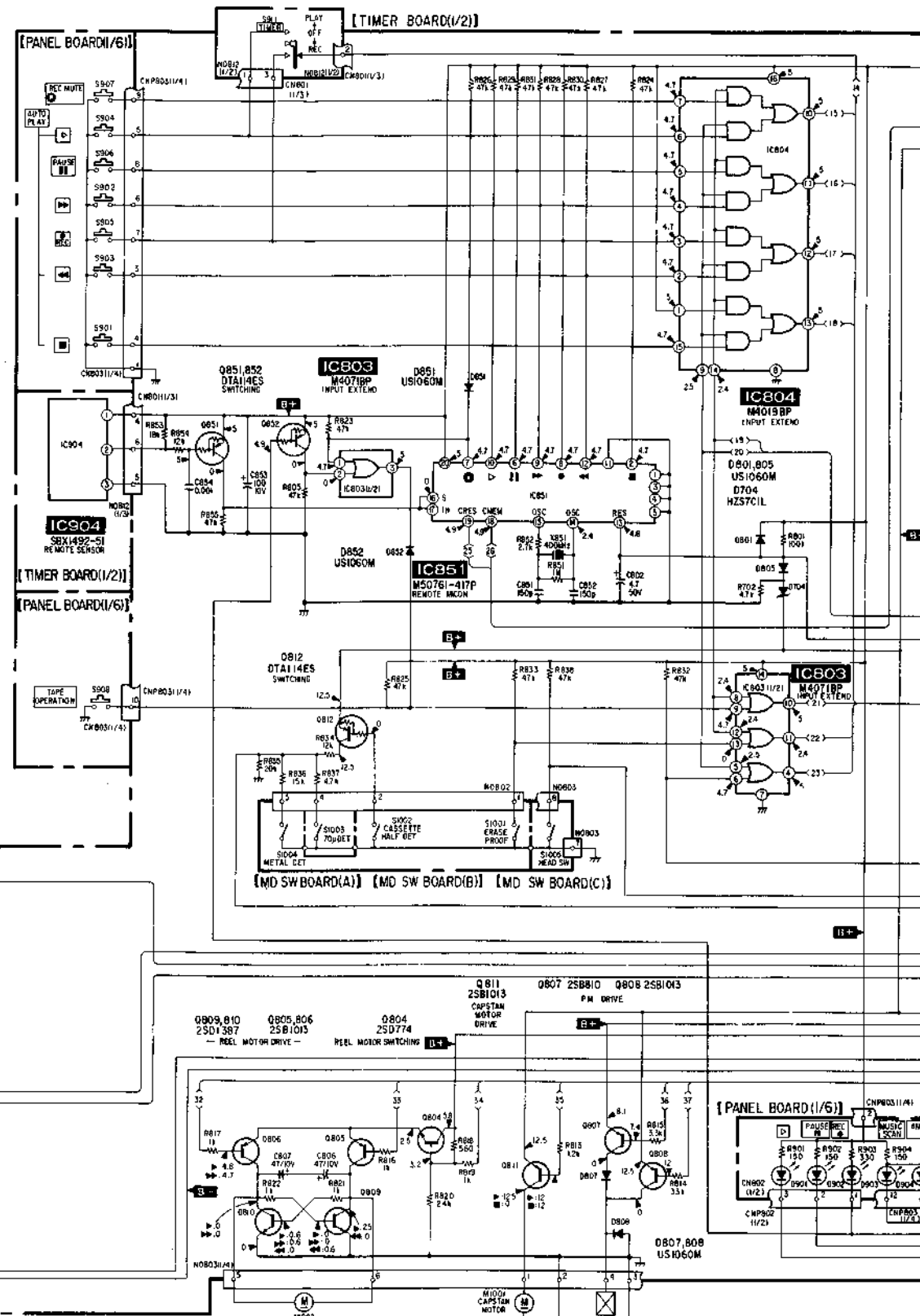
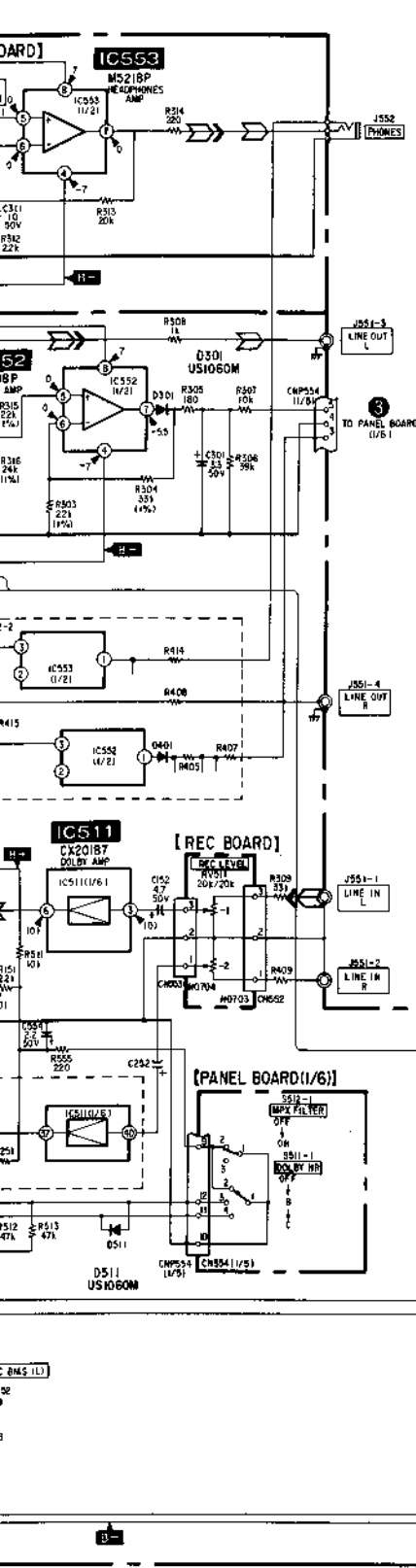






4.3. AUDIO/SYSTEM CONTROL SECTION SCHEMATIC DIAGRAM

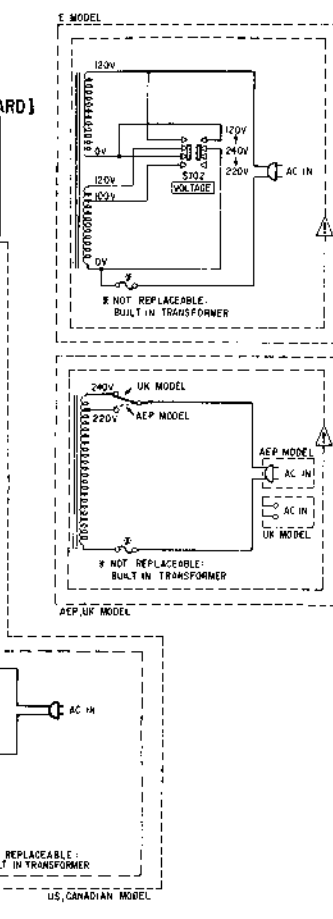
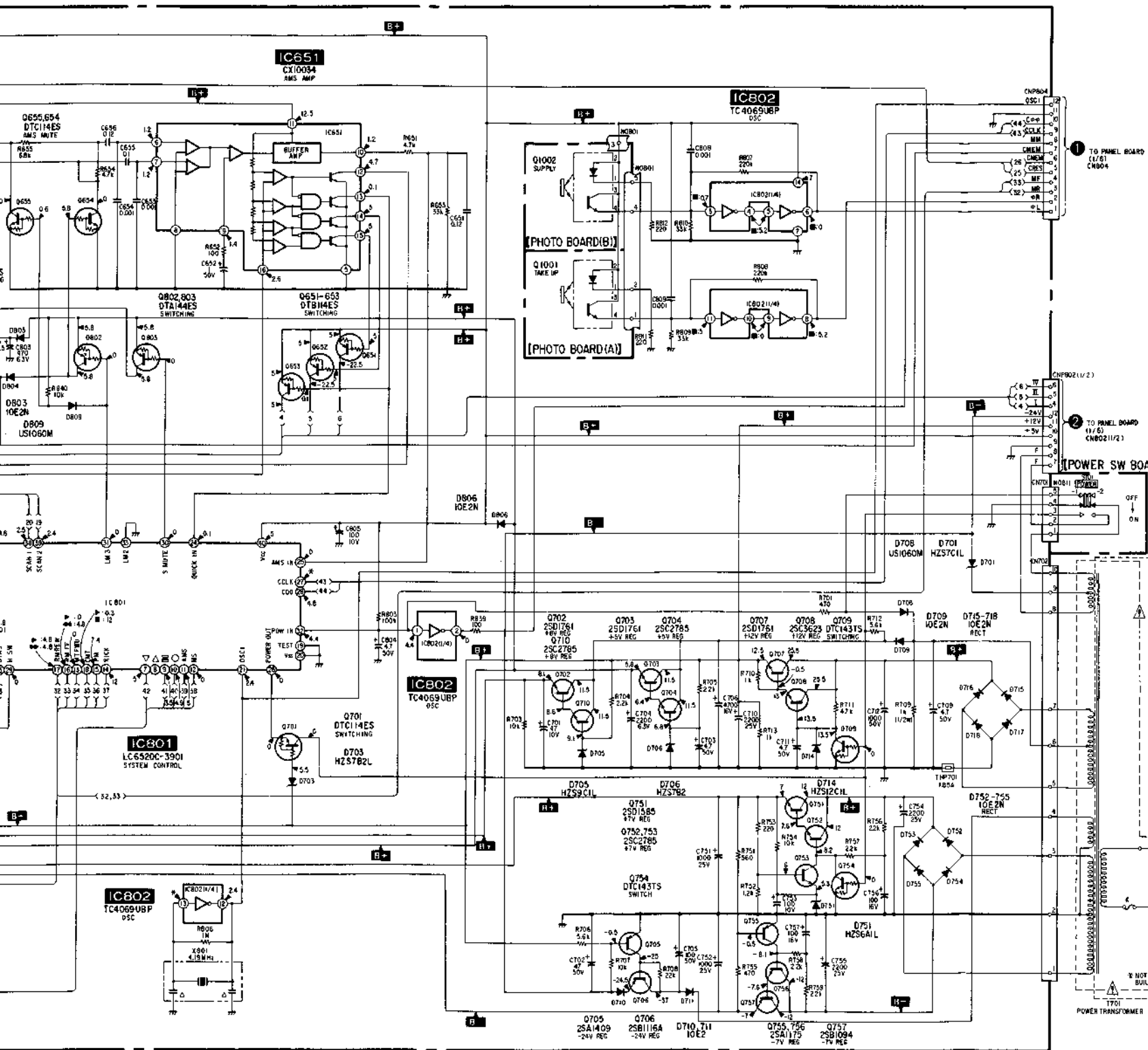




**Note:**

- All capacitors are in  $\mu\text{F}$  unless otherwise noted.  $\text{pF}$ :  $\mu\text{pF}$  50WV or less are not indicated except for electrolytics and tantalums.
- All resistors are in  $\Omega$  and  $1/4\text{W}$  or less unless otherwise specified.
- % : indicates tolerance
- Components for right channel. Reference number
- $\square$  : internal component
- $\triangle$  : adjustment for reference
- Voltage and waveforms under no-signal condition
- ( ) : REC

A  
B  
C  
D  
E  
F  
G  
H  
I  
J



**Notes:**

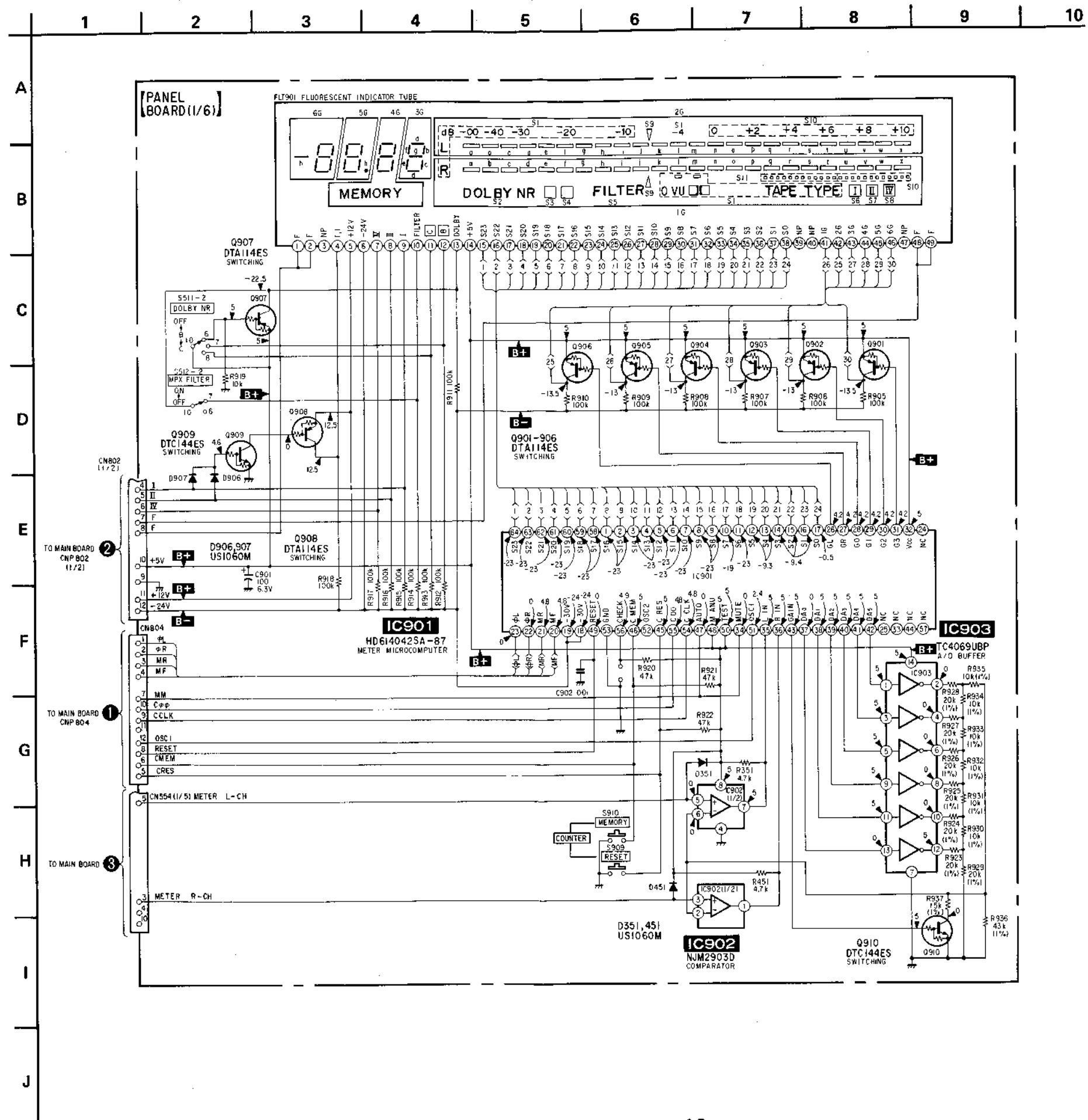
- All capacitors are in  $\mu\text{F}$  unless otherwise noted.  $\text{pF}$ :  $\mu\text{F}$  50WV or less are not indicated except for electrolytics and tantalums.
- All resistors are in  $\Omega$  and  $1/4\text{W}$  or less unless otherwise specified.

- % : indicates tolerance.
- Components for right channel have same values as for left channel. Reference numbers are coded from 200 and 400.
- $\triangle$  : internal component.
- $\square$  : adjustment for repair.
- Voltage and waveforms are dc with respect to ground under no-signal conditions.  
no mark: PLAY  
( ): REC

- $\blacktriangleright$  : FWD     $\blacktriangleleft$  : REW
- $\blacktriangleright\blacktriangleright$  : FF     $\blacksquare$  : STOP
- Voltages are taken with a VOM (Input impedance  $10\text{M}\Omega$ ). Voltage variations may be noted due to normal production tolerances.
- Signal path.  
 $\curvearrowright$  : PB  
 $\curvearrowleft$  : REC

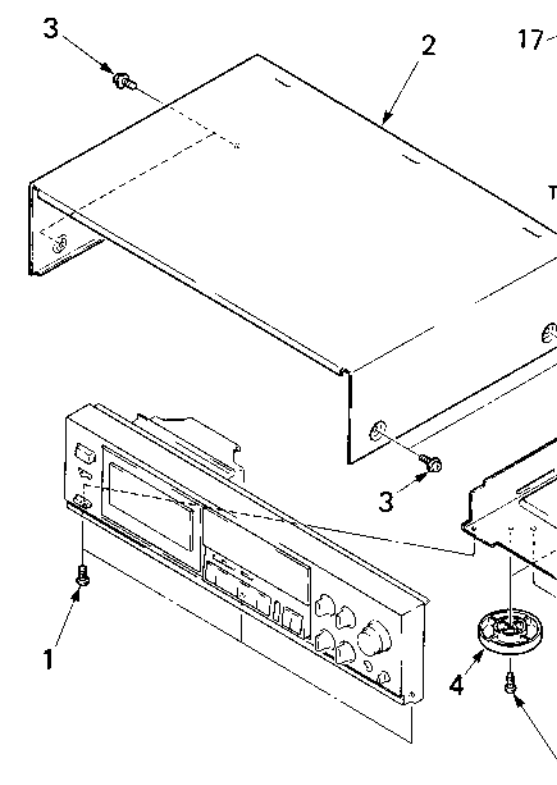
**Note:** The components identified by mark  $\triangle$  or dotted line with mark  $\triangle$  are critical for safety. Replace only with part number specified.

4.4. DISPLAY SECTION SCHEMATIC DIAGRAM • See page 9 for notes.



- NOTE:**
- The mechanical parts with no reference number in the exploded views are not supplied.
  - The construction parts of an assembled part are indicated with a collation number in the remark column.
  - Items marked "\*" are not stocked since they are seldom required for routine service. Some delay should be anticipated when ordering these items.

(1) CABINET SECTION



| No. | Part No.      | Description               |
|-----|---------------|---------------------------|
| 1   | 3-703-685-21  | SCREW (+BV 3X8)           |
| 2   | 3-350-407-41  | CASE                      |
| 3   | 3-704-366-01  | SCREW (CASE) (M3X8)       |
| 4   | X-4885-935-1  | (K630ES)...FOOT ASSY      |
|     | X-4911-201-1  | (K630)...FOOT ASSY        |
| 5   | 7-682-548-04  | SCREW +BVTT 3X8 (S)       |
| 6   | *3-669-610-00 | SPACER                    |
| 7   | *3-346-265-11 | HOLDER, PC BOARD          |
| 8   | *4-924-098-11 | HOLDER, PC BOARD          |
| 9   | 7-682-547-04  | SCREW +BVTT 3X6 (S)       |
| 10  | *3-309-144-21 | HEAT SINK                 |
| 11  | 4-870-539-00  | PLATE, GROUND             |
| 12  | *4-363-146-21 | HEAT SINK, V.OUT          |
| 13  | 7-685-646-79  | SCREW +BVTP 3X8 TYPE2 (S) |
| 14  | *3-350-406-21 | (AEP)...PANEL, BACK       |
|     | *3-350-406-31 | (US)...PANEL, BACK        |
|     | *3-350-406-41 | (UK)...PANEL, BACK        |
|     | *3-350-406-51 | (E)...PANEL, BACK         |
|     | *3-350-406-71 | (K630)...PANEL, BACK      |

## SECTION 5 EXPLODED VIEWS

**NOTE:**

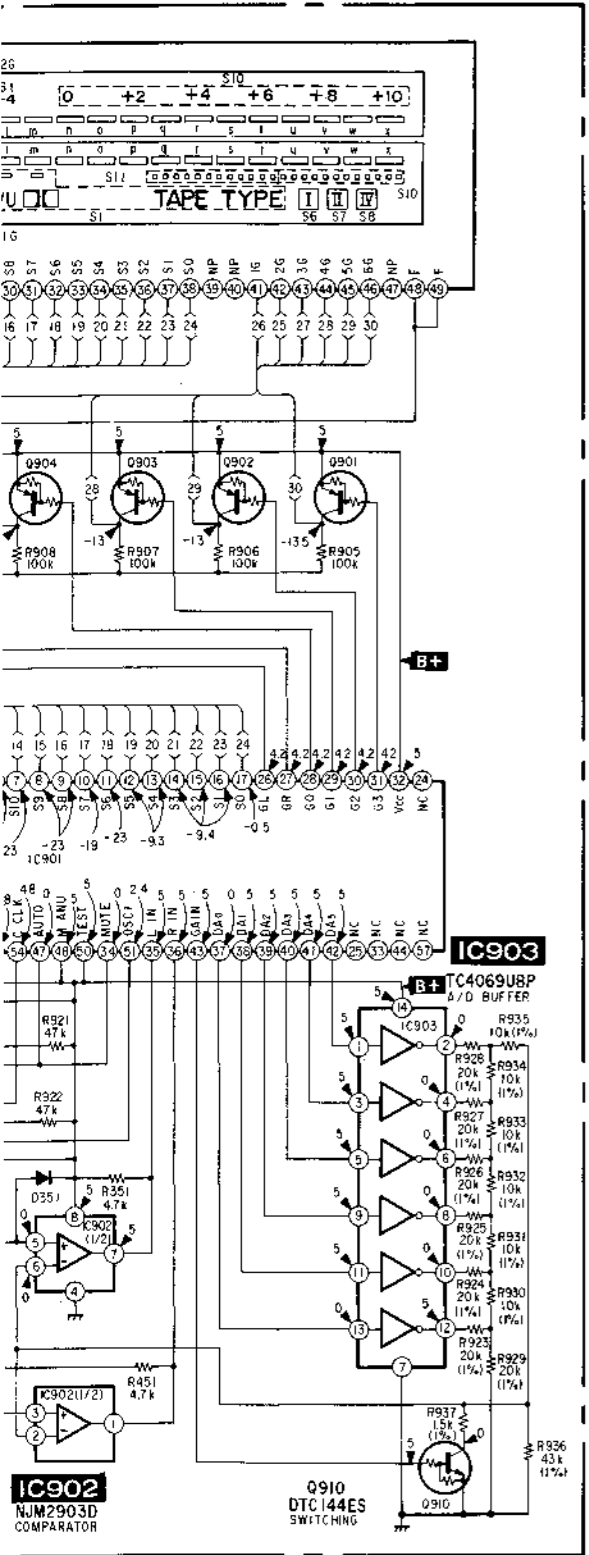
- The mechanical parts with no reference number in the exploded views are not supplied.
- The construction parts of an assembled part are indicated with a collation number in the remark column.
- Items marked "\*" are not stocked since they are seldom required for routine service. Some delay should be anticipated when ordering these items.

- Due to standardization, parts with part number suffix -XX and -X may be different from the parts specified in the components used on the set.
- Color Indication of Appearance Parts Example:  
(RED) ... KNOB, BALANCE (WHITE)  
↑ Cabinet's Color      ↑ Parts' Color

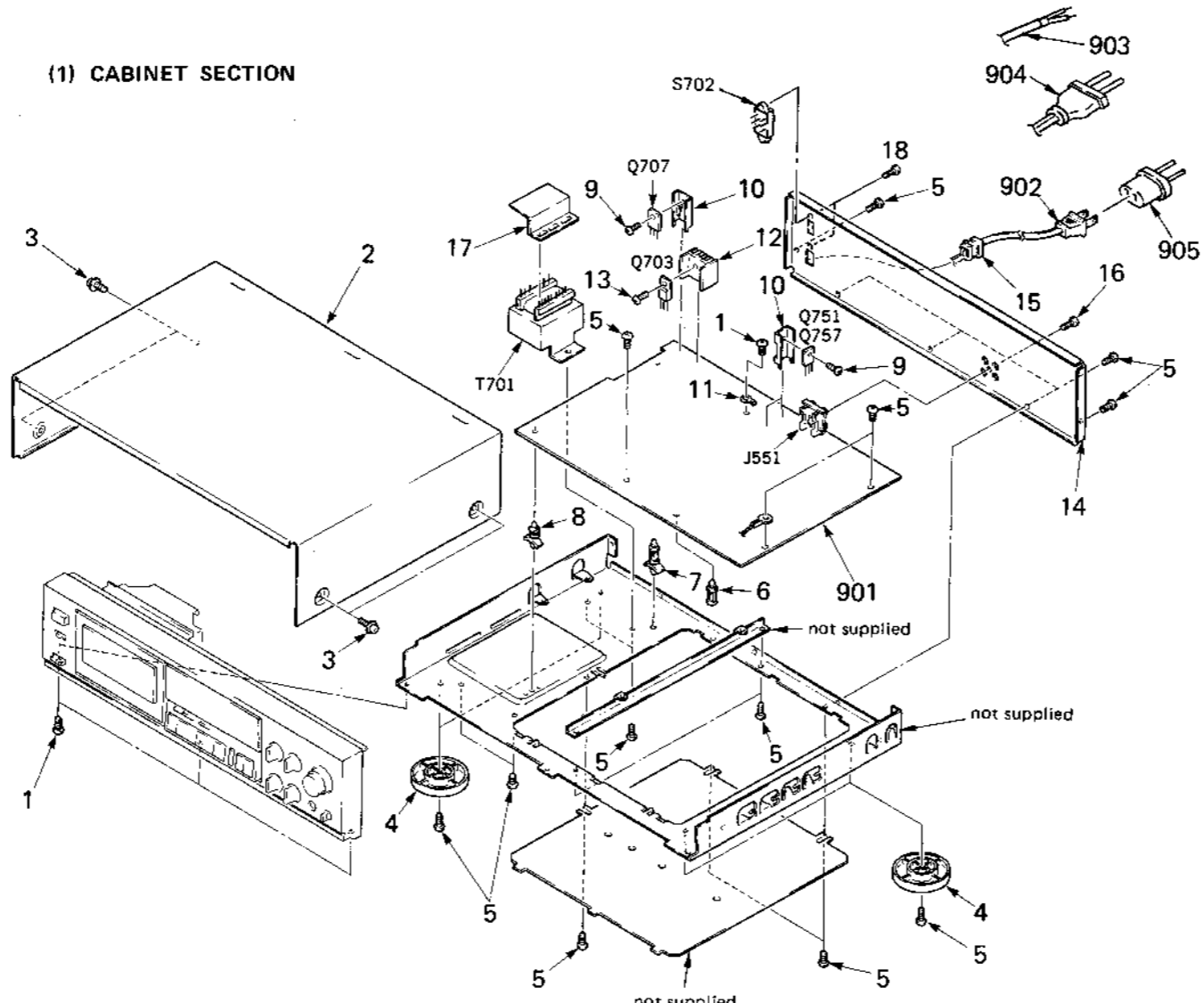
The components identified by mark or dotted line with mark are critical for safety. Replace only with part number specified.

Les composants identifiés par une marque sont critiques pour la sécurité. Ne les remplacer que par une pièce portant le numéro spécifié.

7      8      9      10

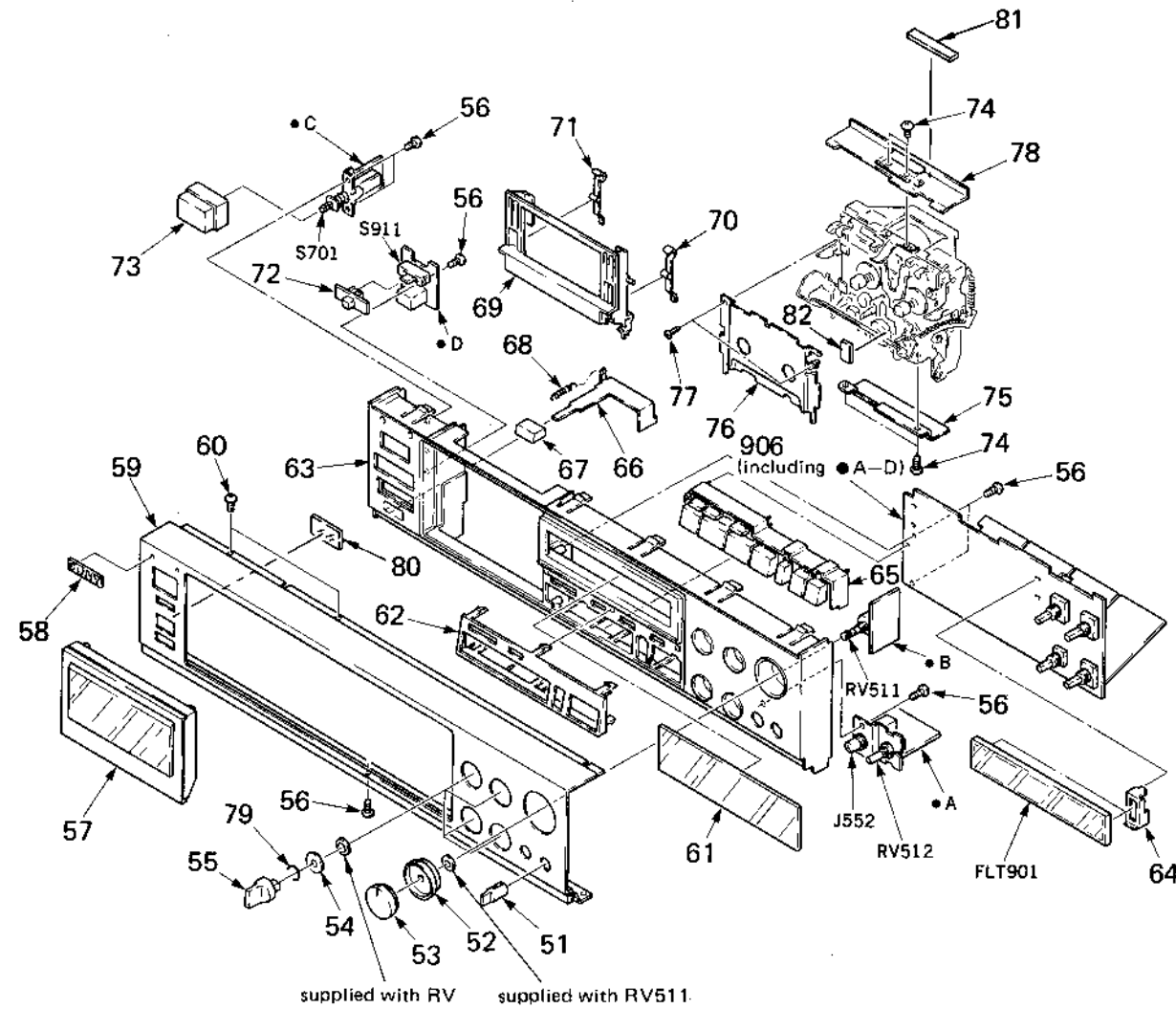


(1) CABINET SECTION



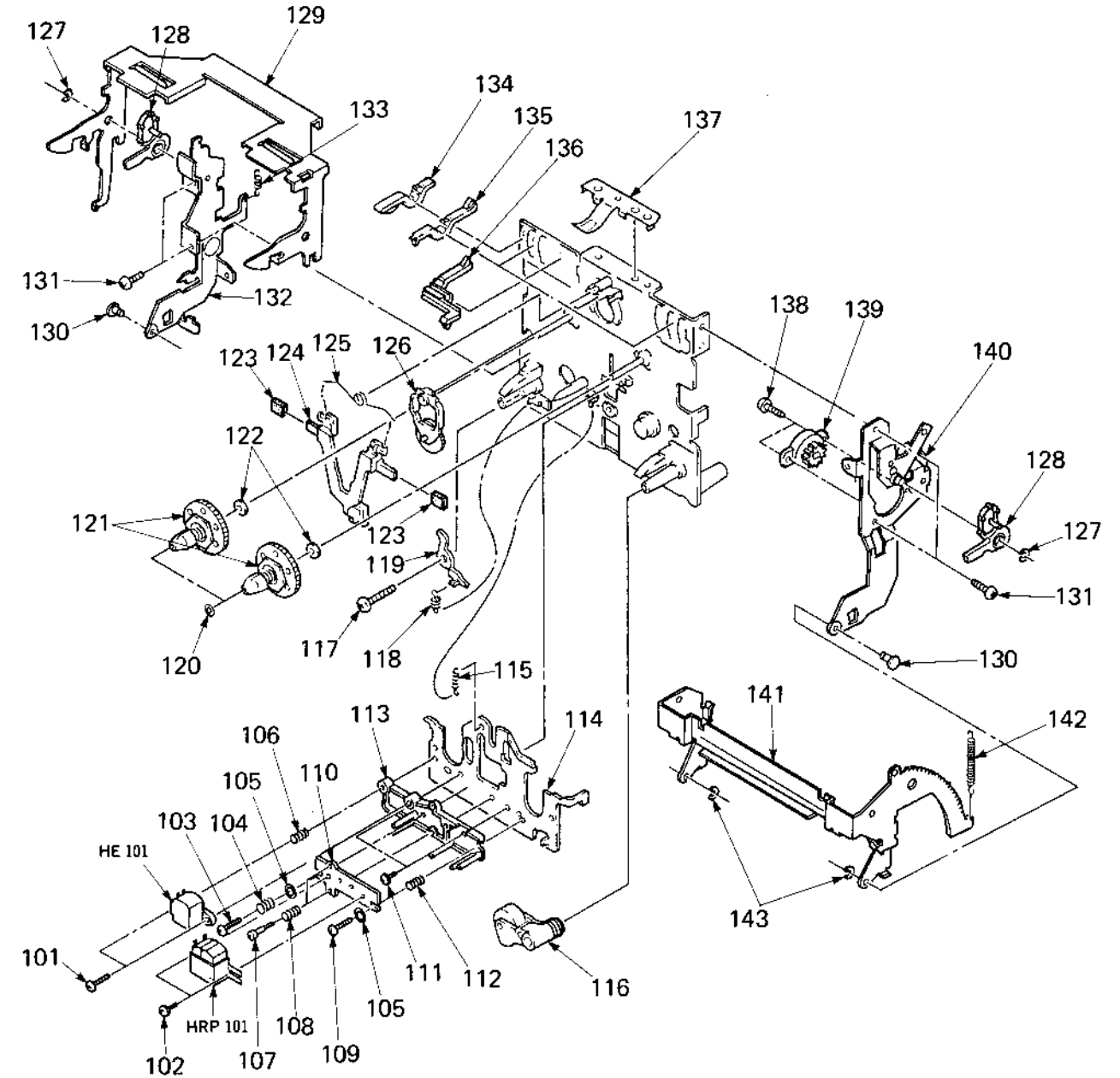
| No.  | Part No.  | Description  | Remarks |
|------|---|--|---------|
| 1    | 3-703-685-21  | SCREW (+BV 3X8)  |         |
| 2    | 3-350-407-41  | CASE   |         |
| 3    | 3-704-366-01  | SCREW (CASE) (M3X8)  |         |
| 4    | X-4885-935-1<br>X-4911-201-1  | (K630ES)...FOOT ASSY<br>(K630)...FOOT ASSY   |         |
| 5    | 7-682-548-04  | SCREW +BVTT 3X8 (S)  |         |
| 6    | *3-669-610-00   | SPACER   |         |
| 7    | *3-346-265-11   | HOLDER, PC BOARD   |         |
| 8    | *4-924-098-11   | HOLDER, PC BOARD   |         |
| 9    | 7-682-547-04  | SCREW +BVTT 3X6 (S)  |         |
| 10   | *3-309-144-21   | HEAT SINK  |         |
| 11   | 4-870-539-00  | PLATE, GROUND  |         |
| 12   | *4-363-146-21   | HEAT SINK, V.OUT   |         |
| 13   | 7-685-646-79  | SCREW +BVTP 3X8 TYPE2 IT-3   |         |
| 14   | *3-350-406-21<br>*3-350-406-31<br>*3-350-406-41<br>*3-350-406-51<br>*3-350-406-71 | (AEP)...PANEL, BACK<br>(US)...PANEL, BACK<br>(UK)...PANEL, BACK<br>(E)...PANEL, BACK<br>(K630)...PANEL, BACK |         |
| 15   | *3-703-244-00<br>*3-703-571-11  | (US,AEP,UK,K630)...BUSHING (2104), CORD<br>(E).....BUSHING (S)(4516), CORD                                   |         |
| 16   | 7-621-849-00  | SCREW, TAPPING   |         |
| 17   | *3-337-136-01   | COVER, TRANSFORMER SAFETY  |         |
| 18   | 7-685-646-79  | (E)...SCREW +BVTP 3X8 TYPE2 N-S  |         |
| 901  | *A-2056-440-A   | MOUNTED PCB, MAIN  |         |
| 902  | △.1-551-188-XX<br>△.1-555-465-00  | (E).....CORD, POWER<br>(US,K630)...CORD, POWER   |         |
| 903  | △.1-551-884-32  | (UK)...CORD, POWER   |         |
| 904  | △.1-555-795-00  | (AEP)...CORD, POWER, EULO PLUG   |         |
| 905  | △.1-526-565-00  | (E)...AC PLUG ADAPTOR  |         |
| S702 | △.1-570-307-11  | (E)...SWITCH, VOLTAGE CHANGE   |         |
| T701 | △.1-449-484-11  | (AEP,UK)...TRANSFORMER, POWER  |         |
| T701 | △.1-449-575-11  | (E).....TRANSFORMER, POWER   |         |
| T701 | △.1-449-576-11  | (US,K630)...TRANSFORMER, POWER   |         |

(2) FRONT PANEL SECTION



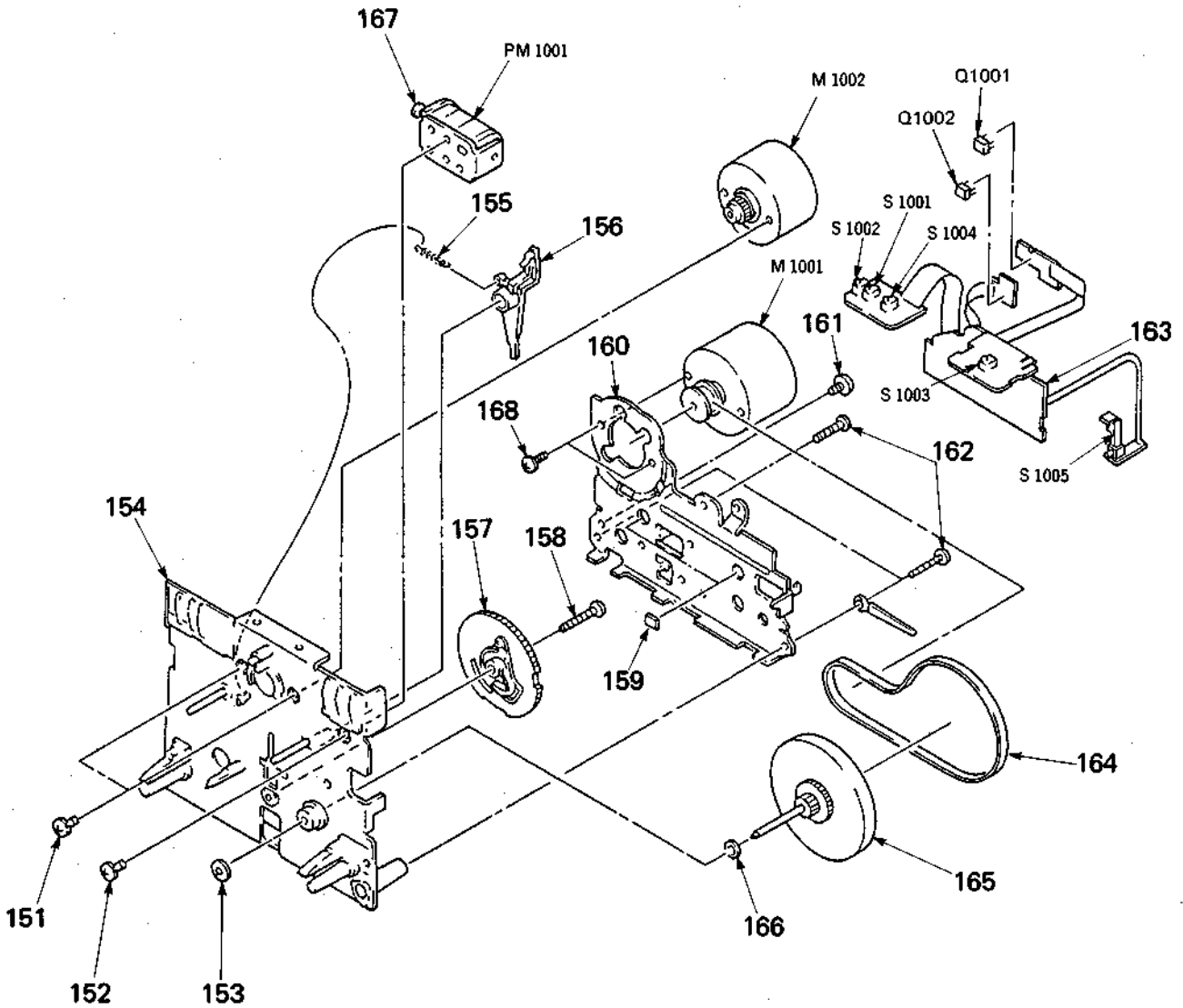
| No. | Part No.      | Description                 | Remarks | No. | Part No.      | Description                | Remarks |
|-----|---------------|-----------------------------|---------|-----|---------------|----------------------------|---------|
| 51  | 4-921-921-11  | KNOB (M)                    |         | 65  | X-3304-939-1  | BUTTON ASSY                |         |
| 52  | 3-332-589-01  | KNOB (REC VOL-LEFT)         |         | 66  | *3-332-564-01 | SLIDER (EJC)               |         |
| 53  | 3-332-590-01  | KNOB (REC VOL-RIGHT)        |         | 67  | 3-343-698-11  | BUTTON (EJECT)             |         |
| 54  | 3-350-416-01  | SPACER                      |         | 68  | 3-571-829-00  | SPRING, TENSION            |         |
| 55  | 4-908-097-21  | KNOB                        |         | 69  | X-3332-448-1  | HOLDER ASSY, CASSETTE      |         |
| 56  | 7-685-534-19  | SCREW +BTP 2.6X8 TYPE2 N-S  |         | 70  | 3-307-372-00  | SPRING (RIGHT)             |         |
| 57  | A-2169-137-A  | LID ASSY, CASSETTE          |         | 71  | 3-307-371-00  | SPRING (LEFT)              |         |
| 58  | 4-908-848-01  | (K630ES)...EMBLEM, SONY     |         | 72  | 3-307-538-21  | KNOB, SWITCH, TIMER        |         |
|     | 4-925-334-11  | (K630)...EMBLEM (5-A), SONY |         | 73  | 4-917-460-01  | KNOB, POWER                |         |
| 59  | 3-350-404-31  | (US).....PANEL, FRONT       |         | 74  | 7-682-547-04  | SCREW +BVTT 3X6 (S)        |         |
|     | 3-350-404-41  | (AEP,UK)...PANEL, FRONT     |         | 75  | *3-332-560-01 | BRACKET (MDB)              |         |
|     | 3-350-404-51  | (E).....PANEL, FRONT        |         | 76  | *3-332-547-01 | PLATE, ORNAMENTAL          |         |
|     | 3-350-404-81  | (K630).....PANEL, FRONT     |         | 77  | 7-621-772-00  | SCREW +B 2X3               |         |
|     |               |                             |         | 78  | *3-332-561-01 | BRACKET (MDU)              |         |
| 60  | 7-685-873-01  | SCREW +BVTT 3X8 (S)         |         | 79  | 3-350-426-01  | SPRING                     |         |
| 61  | 3-318-698-01  | WINDOW (M)                  |         | 80  | 3-712-704-11  | PLATE (SMALL), TRANSPARENT |         |
| 62  | X-3304-941-1  | PLATE (B) ASSY, ORNAMENTAL  |         | 81  | *4-913-199-01 | CUSHION (D), CHASSIS       |         |
| 63  | 3-350-405-01  | PANEL (BASE)                |         | 82  | *4-917-633-01 | DAMPER (B)                 |         |
| 64  | *3-318-695-01 | HOLDER (FL)                 |         | 906 | *A-2056-441-A | MOUNTED PCB, PANEL         |         |

(3) MECHANISM SECTION (1)  
(TCM-CMAY B-27)



| No. | Part No.      | Description                   | Remarks | No.    | Part No.      | Description               | Remarks |
|-----|---------------|-------------------------------|---------|--------|---------------|---------------------------|---------|
| 101 | 7-621-955-75  | SCREW, TOTSU PMH 2X12         |         | 124    | 3-392-723-01  | LEVER (B), HOLD           |         |
| 102 | 7-621-255-15  | SCREW +P 2X3                  |         | 125    | 3-391-124-01  | SPRING                    |         |
| 103 | 3-392-718-01  | SCREW (M2X12) (SPECIAL), BIND |         | 126    | X-3391-111-1  | IDLER ASSY                |         |
| 104 | 3-392-716-01  | SPRING (LEFT)                 |         | 127    | 7-624-105-04  | STOP RING 2.3, TYPE -E    |         |
| 105 | 7-688-001-01  | W 2, SMALL                    |         | 128    | 3-391-185-01  | LEVER, STOP               |         |
| 106 | 3-391-101-01  | SPRING                        |         | 129    | *3-391-180-01 | ARM, EJECT                |         |
| 107 | 3-392-719-01  | SCREW, TILT                   |         | 130    | 3-391-183-01  | SHAFT (B), HOLDER FULCRUM |         |
| 108 | 3-392-715-01  | SPRING                        |         | 131    | 7-621-773-86  | SCREW +PTT 2.6X4 (S)      |         |
| 109 | 7-621-255-55  | SCREW +P 2X8                  |         | 132    | *X-3391-152-1 | ARM ASSY, EJECT           |         |
| 110 | *3-392-714-01 | SPACER, 3 HEAD                |         | 133    | 3-391-181-01  | SP. LEVER RETURN          |         |
| 111 | 3-392-734-01  | SCREW (2.0X3) (ZNT), O PAN    |         | 134    | 3-392-725-01  | LEVER                     |         |
| 112 | 3-392-717-01  | SPRING (RIGHT)                |         | 135    | 3-392-724-01  | LEVER                     |         |
| 113 | *3-392-713-01 | PLATE, BASE, HEAD             |         | 136    | 3-392-726-01  | LEVER                     |         |
| 114 | *3-392-712-01 | BASE, HEAD                    |         | 137    | 3-391-177-01  | SPRING                    |         |
| 115 | 3-391-114-01  | SPRING                        |         | 138    | 7-621-255-15  | SCREW +PTT 2X3 (S)        |         |
| 116 | 3-392-731-01  | PINCH ROLLER (R) ASSY         |         | 139    | X-3391-151-1  | DAMPER ASSY               |         |
| 117 | 3-392-733-01  | SCREW                         |         | 140    | *3-392-722-01 | PLATE HOLD BLK            |         |
| 118 | 3-391-123-01  | SPRING (A)                    |         | 141    | *3-391-182-01 | HOLDER, CASSETTE          |         |
| 119 | 3-391-105-01  | ARM (B), EJECT SAFETY         |         | 142    | 3-391-184-01  | SPRING                    |         |
| 120 | 3-701-436-11  | WASHER, 1.6 POLYETHYLENE      |         | 143    | 7-624-102-04  | STOP RING 1.5, TYPE -E    |         |
| 121 | X-3391-107-1  | REEL ASSY, T.U                |         | HE101  | 1-543-375-11  | HEAD, ERASE (EF-701-36)   |         |
| 122 | 3-392-711-01  | WASHER (2.1X0.25) (T)         |         | HRP101 | 1-543-593-11  | HEAD, MAGNETIC (REC/PB)   |         |
| 123 | 3-392-728-01  | RUBBER, BRAKE                 |         |        |               |                           |         |

(4) MECHANISM SECTION (2)  
(TCM-CMAY B-27)



| No. | Part No.      | Description                   | Remarks | No.    | Part No.      | Description                | Remarks |
|-----|---------------|-------------------------------|---------|--------|---------------|----------------------------|---------|
| 151 | 7-621-770-67  | SCREW +P 2.6X6                |         | 165    | X-3391-133-1  | ASSY F/W                   |         |
| 152 | 7-621-759-25  | +PSW, 2.6X4                   |         | 166    | 3-701-438-11  | WASHER, 2.5                |         |
| 153 | 3-391-119-01  | SEAL, WASHER OIL              |         | 167    | *3-392-707-01 | SOLENOID (ARBOR)           |         |
| 154 | 3-392-710-01  | CHASSIS BASE BLK              |         | 168    | 7-628-253-90  | SCREW +PS 2.6X4            |         |
| 155 | 3-392-730-01  | SP, PLAY ARM                  |         | M1001  | X-3391-130-1  | MOTOR ASSY                 |         |
| 156 | 3-392-727-01  | ARM, PLAY                     |         | M1002  | 3-392-709-01  | MTR REEL BLK               |         |
| 157 | 3-391-197-01  | GEAR (I), CAM                 |         | PM1001 | 1-454-440-21  | SOLENOID, PLUNGER          |         |
| 158 | 3-392-732-01  | SCREW (2X15), TT, WASHER      |         | Q1001  | 1-807-509-11  | PHOTO SENSOR (HEAD SW)     |         |
| 159 | 3-391-129-01  | SPACER                        |         | Q1002  | 1-807-509-11  | PHOTO SENSOR (HEAD SW)     |         |
| 160 | *3-392-720-01 | F/W BKT                       |         | S1001  | 1-571-081-11  | SWITCH (ERASE PROOF)       |         |
| 161 | 7-682-646-04  | SCREW +PTT 3X5 (S)            |         | S1002  | 1-571-081-11  | SWITCH (CASSETTE HALF DET) |         |
| 162 | 7-685-131-19  | SCREW +P 2.6X4 TYPE2 NON-SLIT |         | S1003  | 1-571-081-11  | SWITCH (70u DET)           |         |
| 163 | *3-392-721-01 | PCB CONTROL BLK               |         | S1004  | 1-571-081-11  | SWITCH (METAL DET)         |         |
| 164 | 3-392-729-01  | BELT, MAIN                    |         | S1005  | 1-571-820-11  | SWITCH, LEAF               |         |

## SECTION 6 ELECTRICAL PARTS LIST

**NOTE:**

- Due to standardization, replacements in the parts list may be different from the parts specified in the diagrams or the components used on the set.
- Items marked "\*" are not stocked since they are seldom required for routine service. Some delay should be anticipated when ordering these items.
- If there are two or more same circuits in a set such as a stereophonic machine, only typical circuit parts may be indicated and capacitors and resistors in other same circuits may be omitted.

**CAPACITORS:**

MF:  $\mu$ F, PF:  $\mu$ MF.

**RESISTORS**

- All resistors are in ohms.
- F: nonflammable

**COILS**

- MMH: mH, UH:  $\mu$ H

**SEMICONDUCTORS**

In each case, U:  $\mu$ , for example:

UA...:  $\mu$ A..., UPA...:  $\mu$ PA...,

UPC...:  $\mu$ PC, UPD...:  $\mu$ PD...

The components identified by mark  $\Delta$  or dotted line with mark  $\Delta$  are critical for safety. Replace only with part number specified.

Les composants identifiés par une marque  $\Delta$  sont critiques pour la sécurité. Ne les remplacer que par une pièce portant le numéro spécifié.

| Ref.No. | Part No.                                       | Description                                    |          |     |      |
|---------|--|--|----------|-----|------|
| 901     | *A-2056-440-A                                  | MOUNTED PCB, MAIN                              |          |     |      |
| 902     | $\Delta$ 1-551-188-XX<br>$\Delta$ 1-555-465-00 | (E).....CORD, POWER<br>(US,K630)...CORD, POWER |          |     |      |
| 903     | $\Delta$ 1-551-884-32                          | (UK)...CORD, POWER                             |          |     |      |
| 904     | $\Delta$ 1-555-795-00                          | (AEP)...CORD, POWER, EULO PLUG                 |          |     |      |
| 905     | $\Delta$ 1-526-565-00                          | (E)...AC PLUG ADAPTOR                          |          |     |      |
| 906     | *A-2056-441-A                                  | MOUNTED PCB, PANEL                             |          |     |      |
| C102    | 1-130-973-00                                   | FILM   | 0.022MF  | 5%  | 100V |
| C103    | 1-124-657-00                                   | ELECT  | 10MF     | 20% | 50V  |
| C104    | 1-130-488-00                                   | MYLAR  | 0.027MF  | 5%  | 50V  |
| C105    | 1-102-966-00                                   | CERAMIC  | 43PF     | 5%  | 50V  |
| C106    | 1-130-474-00                                   | MYLAR  | 0.0018MF | 5%  | 50V  |
| C107    | 1-130-474-00                                   | MYLAR  | 0.0018MF | 5%  | 50V  |
| C108    | 1-136-153-00                                   | FILM   | 0.01MF   | 5%  | 50V  |
| C109    | 1-130-481-00                                   | MYLAR  | 0.0068MF | 5%  | 50V  |
| C110    | 1-136-161-00                                   | FILM   | 0.047MF  | 5%  | 50V  |
| C111    | 1-136-163-00                                   | FILM   | 0.068MF  | 5%  | 50V  |
| C112    | 1-136-169-00                                   | FILM   | 0.22MF   | 5%  | 50V  |
| C113    | 1-136-155-00                                   | FILM   | 0.015MF  | 5%  | 50V  |
| C114    | 1-136-167-00                                   | FILM   | 0.15MF   | 5%  | 50V  |
| C115    | 1-136-173-00                                   | FILM   | 0.47MF   | 5%  | 50V  |
| C116    | 1-130-479-00                                   | MYLAR  | 0.0047MF | 5%  | 50V  |
| C117    | 1-124-657-00                                   | ELECT  | 10MF     | 20% | 50V  |
| C151    | 1-130-475-00                                   | MYLAR  | 0.0022MF | 5%  | 50V  |
| C152    | 1-124-927-11                                   | ELECT  | 4.7MF    | 20% | 50V  |
| C153    | 1-126-233-11                                   | ELECT  | 22MF     | 20% | 50V  |
| C154    | 1-124-657-00                                   | ELECT  | 10MF     | 20% | 50V  |
| C155    | 1-130-479-00                                   | MYLAR  | 0.0047MF | 5%  | 50V  |
| C156    | 1-136-173-00                                   | FILM   | 0.47MF   | 5%  | 50V  |
| C157    | 1-136-167-00                                   | FILM   | 0.15MF   | 5%  | 50V  |
| C158    | 1-136-155-00                                   | FILM   | 0.015MF  | 5%  | 50V  |
| C159    | 1-136-169-00                                   | FILM   | 0.22MF   | 5%  | 50V  |
| C160    | 1-136-163-00                                   | FILM   | 0.068MF  | 5%  | 50V  |
| C161    | 1-136-161-00                                   | FILM   | 0.047MF  | 5%  | 50V  |
| C162    | 1-130-481-00                                   | MYLAR  | 0.0068MF | 5%  | 50V  |
| C163    | 1-136-153-00                                   | FILM   | 0.01MF   | 5%  | 50V  |
| C164    | 1-126-233-11                                   | ELECT  | 22MF     | 20% | 50V  |
| C165    | 1-124-499-11                                   | ELECT  | 1MF      | 20% | 50V  |
| C166    | 1-124-927-11                                   | ELECT  | 4.7MF    | 20% | 50V  |
| C167    | 1-124-657-00                                   | ELECT  | 10MF     | 20% | 50V  |
| C168    | 1-162-285-31                                   | CERAMIC  | 180PF    | 10% | 50V  |
| C169    | 1-107-210-00                                   | MICA   | 22PF     | 5%  | 500V |
| C170    | 1-136-165-00                                   | FILM   | 0.1MF    | 5%  | 50V  |
| C171    | 1-136-157-00                                   | FILM   | 0.022MF  | 5%  | 50V  |
| C172    | 1-136-153-00                                   | FILM   | 0.01MF   | 5%  | 50V  |
| C173    | 1-130-468-00                                   | MYLAR  | 560PF    | 5%  | 50V  |

| Ref.No. | Part No.     | Description |          |       |      |
|---------|--------------|-------------|----------|-------|------|
| C174    | 1-136-433-11 | FILM        | 100PF    | 5%    | 630V |
| C175    | 1-136-803-11 | FILM        | 560PF    | 5%    | 630V |
| C301    | 1-123-382-00 | ELECT       | 3.3MF    | 20%   | 50V  |
| C311    | 1-123-875-11 | ELECT       | 10MF     | 20%   | 50V  |
| C501    | 1-123-875-11 | ELECT       | 10MF     | 20%   | 50V  |
| C502    | 1-123-875-11 | ELECT       | 10MF     | 20%   | 50V  |
| C511    | 1-126-176-11 | ELECT       | 220MF    | 20%   | 10V  |
| C512    | 1-126-176-11 | ELECT       | 220MF    | 20%   | 10V  |
| C513    | 1-124-925-11 | ELECT       | 2.2MF    | 20%   | 50V  |
| C514    | 1-124-477-11 | ELECT       | 47MF     | 20%   | 16V  |
| C515    | 1-124-477-11 | ELECT       | 47MF     | 20%   | 16V  |
| C516    | 1-124-902-00 | ELECT       | 0.47MF   | 20%   | 50V  |
| C517    | 1-136-253-11 | FILM        | 0.0018MF | 5%    | 100V |
| C518    | 1-136-253-11 | FILM        | 0.0018MF | 5%    | 100V |
| C519    | 1-136-233-11 | FILM        | 0.0047MF | 5%    | 100V |
| C520    | 1-126-233-11 | ELECT       | 22MF     | 20%   | 50V  |
| C521    | 1-107-045-00 | MICA        | 3.9PF    | 0.5PF | 500V |
| C522    | 1-136-558-11 | FILM        | 0.0039MF | 5%    | 630V |
| C551    | 1-124-477-11 | ELECT       | 47MF     | 20%   | 16V  |
| C552    | 1-124-477-11 | ELECT       | 47MF     | 20%   | 16V  |
| C553    | 1-130-487-00 | MYLAR       | 0.022MF  | 5%    | 50V  |
| C554    | 1-124-925-11 | ELECT       | 2.2MF    | 20%   | 50V  |
| C651    | 1-136-166-00 | FILM        | 0.12MF   | 5%    | 50V  |
| C652    | 1-124-499-11 | ELECT       | 1MF      | 20%   | 50V  |
| C653    | 1-162-294-31 | CERAMIC     | 0.001MF  | 10%   | 50V  |
| C654    | 1-162-294-31 | CERAMIC     | 0.001MF  | 10%   | 50V  |
| C655    | 1-136-165-00 | FILM        | 0.1MF    | 5%    | 50V  |
| C656    | 1-136-166-00 | FILM        | 0.12MF   | 5%    | 50V  |
| C701    | 1-124-446-11 | ELECT       | 47MF     | 20%   | 10V  |
| C702    | 1-124-910-11 | ELECT       | 47MF     | 20%   | 50V  |
| C703    | 1-124-927-11 | ELECT       | 4.7MF    | 20%   | 50V  |
| C704    | 1-124-893-11 | ELECT       | 2200MF   | 20%   | 6.3V |
| C705    | 1-124-122-11 | ELECT       | 100MF    | 20%   | 50V  |
| C706    | 1-124-898-11 | ELECT       | 4700MF   | 20%   | 16V  |
| C709    | 1-124-927-11 | ELECT       | 4.7MF    | 20%   | 50V  |
| C710    | 1-124-563-11 | ELECT       | 2200MF   | 20%   | 25V  |
| C711    | 1-124-927-11 | ELECT       | 4.7MF    | 20%   | 50V  |
| C712    | 1-124-637-11 | ELECT       | 1000MF   | 20%   | 50V  |
| C751    | 1-124-557-11 | ELECT       | 1000MF   | 20%   | 25V  |
| C752    | 1-124-557-11 | ELECT       | 1000MF   | 20%   | 25V  |
| C753    | 1-124-443-00 | ELECT       | 100MF    | 20%   | 10V  |
| C754    | 1-124-563-11 | ELECT       | 2200MF   | 20%   | 25V  |
| C755    | 1-124-563-11 | ELECT       | 2200MF   | 20%   | 25V  |
| C756    | 1-126-101-11 | ELECT       | 100MF    | 20%   | 16V  |
| C757    | 1-126-101-11 | ELECT       | 100MF    | 20%   | 16V  |



| Ref.No. | Part No.      | Description           |         |     |      |  |
|---------|---------------|-----------------------|---------|-----|------|--|
| C802    | 1-124-927-11  | ELECT                 | 4.7MF   | 20% | 50V  |  |
| C803    | 1-124-472-11  | ELECT                 | 470MF   | 20% | 6.3V |  |
| C804    | 1-124-927-11  | ELECT                 | 4.7MF   | 20% | 50V  |  |
| C805    | 1-124-443-00  | ELECT                 | 100MF   | 20% | 10V  |  |
| C806    | 1-124-446-11  | ELECT                 | 47MF    | 20% | 10V  |  |
| C807    | 1-124-446-11  | ELECT                 | 47MF    | 20% | 10V  |  |
| C808    | 1-162-294-31  | CERAMIC               | 0.001MF | 10% | 50V  |  |
| C809    | 1-162-294-31  | CERAMIC               | 0.001MF | 10% | 50V  |  |
| C851    | 1-162-284-31  | CERAMIC               | 150PF   | 10% | 50V  |  |
| C852    | 1-162-284-31  | CERAMIC               | 150PF   | 10% | 50V  |  |
| C853    | 1-124-443-00  | ELECT                 | 100MF   | 20% | 10V  |  |
| C854    | 1-162-294-31  | CERAMIC               | 0.001MF | 10% | 50V  |  |
| C901    | 1-126-177-11  | ELECT                 | 100MF   | 20% | 6.3V |  |
| C902    | 1-161-379-00  | CERAMIC               | 0.01MF  | 30% | 16V  |  |
| CN501   | *1-564-507-11 | PLUG, CONNECTOR 4P    |         |     |      |  |
| CN513   | *1-564-507-11 | PLUG, CONNECTOR 4P    |         |     |      |  |
| CN514   | *1-564-506-11 | PLUG, CONNECTOR 3P    |         |     |      |  |
| CN516   | *1-564-506-11 | PLUG, CONNECTOR 3P    |         |     |      |  |
| CN551   | *1-564-508-11 | PLUG, CONNECTOR 5P    |         |     |      |  |
| CN552   | *1-564-506-11 | PLUG, CONNECTOR 3P    |         |     |      |  |
| CN553   | *1-564-506-11 | PLUG, CONNECTOR 3P    |         |     |      |  |
| CN554   | *1-566-827-11 | SOCKET, CONNECTOR 12P |         |     |      |  |
| CN701   | *1-564-339-00 | PIN, CONNECTOR 5P     |         |     |      |  |
| CN702   | *1-564-513-11 | PLUG, CONNECTOR 10P   |         |     |      |  |
| CN801   | *1-564-340-00 | PIN, CONNECTOR 6P     |         |     |      |  |
| CN802   | *1-566-827-11 | SOCKET, CONNECTOR 12P |         |     |      |  |
| CN803   | *1-566-827-11 | SOCKET, CONNECTOR 12P |         |     |      |  |
| CN804   | *1-566-827-11 | SOCKET, CONNECTOR 12P |         |     |      |  |
| CN805   | *1-564-506-11 | PLUG, CONNECTOR 3P    |         |     |      |  |
| CNP554  | *1-566-826-11 | PLUG, CONNECTOR 12P   |         |     |      |  |
| CNP802  | *1-566-826-11 | PLUG, CONNECTOR 12P   |         |     |      |  |
| CNP803  | *1-566-826-11 | PLUG, CONNECTOR 12P   |         |     |      |  |
| CNP804  | *1-566-826-11 | PLUG, CONNECTOR 12P   |         |     |      |  |
| D301    | 8-719-000-26  | DIODE US1060M         |         |     |      |  |
| D351    | 8-719-000-26  | DIODE US1060M         |         |     |      |  |
| D401    | 8-719-000-26  | DIODE US1060M         |         |     |      |  |
| D451    | 8-719-000-26  | DIODE US1060M         |         |     |      |  |
| D511    | 8-719-000-26  | DIODE US1060M         |         |     |      |  |
| D512    | 8-719-000-26  | DIODE US1060M         |         |     |      |  |
| D513    | 8-719-000-26  | DIODE US1060M         |         |     |      |  |
| D514    | 8-719-000-26  | DIODE US1060M         |         |     |      |  |
| D515    | 8-719-000-26  | DIODE US1060M         |         |     |      |  |
| D516    | 8-719-000-26  | DIODE US1060M         |         |     |      |  |
| D517    | 8-719-000-26  | DIODE US1060M         |         |     |      |  |
| D701    | 8-719-933-49  | DIODE HZS7C1L         |         |     |      |  |
| D703    | 8-719-933-47  | DIODE HZS7B2L         |         |     |      |  |
| D704    | 8-719-933-49  | DIODE HZS7C1L         |         |     |      |  |
| D705    | 8-719-933-59  | DIODE HZS9C1L         |         |     |      |  |
| D706    | 8-719-933-47  | DIODE HZS7B2L         |         |     |      |  |
| D708    | 8-719-000-26  | DIODE US1060M         |         |     |      |  |
| D709    | 8-719-200-77  | DIODE 10E2N           |         |     |      |  |
| D710    | 8-719-200-77  | DIODE 10E2N           |         |     |      |  |
| D711    | 8-719-200-77  | DIODE 10E2N           |         |     |      |  |
| D714    | 8-719-933-79  | DIODE HZS7C1L         |         |     |      |  |
| D715    | 8-719-200-77  | DIODE 10E2N           |         |     |      |  |
| D716    | 8-719-200-77  | DIODE 10E2N           |         |     |      |  |
| D717    | 8-719-200-77  | DIODE 10E2N           |         |     |      |  |

| Ref.No. | Part No.     | Description                 |       |  |  |
|---------|--------------|-----------------------------|-------|--|--|
| D718    | 8-719-200-77 | DIODE 10E2N                 |       |  |  |
| D751    | 8-719-933-33 | DIODE HZS6A1L               |       |  |  |
| D752    | 8-719-200-77 | DIODE 10E2N                 |       |  |  |
| D753    | 8-719-200-77 | DIODE 10E2N                 |       |  |  |
| D754    | 8-719-200-77 | DIODE 10E2N                 |       |  |  |
| D755    | 8-719-200-77 | DIODE 10E2N                 |       |  |  |
| D801    | 8-719-000-26 | DIODE US1060M               |       |  |  |
| D802    | 8-719-000-26 | DIODE US1060M               |       |  |  |
| D803    | 8-719-200-77 | DIODE 10E2N                 |       |  |  |
| D804    | 8-719-000-26 | DIODE US1060M               |       |  |  |
| D805    | 8-719-000-26 | DIODE US1060M               |       |  |  |
| D806    | 8-719-200-77 | DIODE 10E2N                 |       |  |  |
| D807    | 8-719-000-26 | DIODE US1060M               |       |  |  |
| D808    | 8-719-000-26 | DIODE US1060M               |       |  |  |
| D809    | 8-719-000-26 | DIODE US1060M               |       |  |  |
| D851    | 8-719-000-26 | DIODE US1060M               |       |  |  |
| D852    | 8-719-000-26 | DIODE US1060M               |       |  |  |
| D901    | 8-719-302-52 | DIODE SEL1410E              |       |  |  |
| D902    | 8-719-941-46 | DIODE GL-5HY41              |       |  |  |
| D903    | 8-719-302-45 | DIODE SEL1210S              |       |  |  |
| D904    | 8-719-301-43 | DIODE SEL2410E-C            |       |  |  |
| D905    | 8-719-301-43 | DIODE SEL2410E-C            |       |  |  |
| D906    | 8-719-000-26 | DIODE US1060M               |       |  |  |
| D907    | 8-719-000-26 | DIODE US1060M               |       |  |  |
| FLT901  | 1-519-491-11 | INDICATOR TUBE, FLUORESCENT |       |  |  |
| HE101   | 1-543-375-11 | HEAD, ERASE (EF-701-36)     |       |  |  |
| HRP101  | 1-543-593-11 | HEAD, MAGNETIC (REC/PB)     |       |  |  |
| IC501   | 8-759-111-44 | IC UPC4570C-1               |       |  |  |
| IC502   | 8-752-018-70 | IC CX20187                  |       |  |  |
| IC511   | 8-752-018-70 | IC CX20187                  |       |  |  |
| IC512   | 8-752-033-61 | IC CXA1198AP                |       |  |  |
| IC513   | 8-759-106-56 | IC UPC1297CA                |       |  |  |
| IC551   | 8-759-601-43 | IC M4066BP                  |       |  |  |
| IC552   | 8-759-945-58 | IC RC4558P                  |       |  |  |
| IC553   | 8-759-601-02 | IC M5218P                   |       |  |  |
| IC651   | 8-759-700-46 | IC CX10034                  |       |  |  |
| IC801   | 8-759-821-29 | IC LC6520C-3901             |       |  |  |
| IC802   | 8-759-240-69 | IC TC4069UBP                |       |  |  |
| IC803   | 8-759-240-71 | IC TC4071BP                 |       |  |  |
| IC804   | 8-759-601-19 | IC M4019BP                  |       |  |  |
| IC851   | 8-759-604-07 | IC M50761-423P              |       |  |  |
| IC901   | 8-759-302-98 | IC HD614042SA87             |       |  |  |
| IC902   | 8-759-928-03 | IC NJM2903D                 |       |  |  |
| IC903   | 8-759-240-69 | IC TC4069UBP                |       |  |  |
| IC904   | 8-749-901-49 | IC SBX1492-51               |       |  |  |
| J551    | 1-565-258-11 | JACK, PIN 4P (LINE IN/OUT)  |       |  |  |
| J552    | 1-507-796-71 | JACK (PHONES)               |       |  |  |
| L101    | 1-410-779-21 | INDUCTOR                    | 22MMH |  |  |
| L151    | 1-410-780-11 | INDUCTOR                    | 27MMH |  |  |
| L201    | 1-410-779-21 | INDUCTOR                    | 22MMH |  |  |
| L251    | 1-410-780-11 | INDUCTOR                    | 27MMH |  |  |
| LPF151  | 1-235-980-11 | FILTER, LOW PASS            |       |  |  |
| LPF251  | 1-235-980-11 | FILTER, LOW PASS            |       |  |  |
| M1001   | X-3391-130-1 | MOTOR ASSY                  |       |  |  |
| M1002   | 3-392-709-01 | MTR REEL BLK                |       |  |  |

# TC-K630/K630ES

| Ref.No. | Part No.     | Description          |
|---------|--------------|----------------------|
| PM1001  | 1-454-440-21 | SOLENOID, PLUNGER    |
| Q101    | 8-729-922-37 | TRANSISTOR 2SD2144S  |
| Q151    | 8-729-119-78 | TRANSISTOR 2SC2785   |
| Q152    | 8-729-107-77 | TRANSISTOR 2SC3623-L |
| Q201    | 8-729-922-37 | TRANSISTOR 2SD2144S  |
| Q251    | 8-729-119-78 | TRANSISTOR 2SC2785   |
| Q252    | 8-729-107-77 | TRANSISTOR 2SC3623-L |
| Q301    | 8-729-922-37 | TRANSISTOR 2SD2144S  |
| Q401    | 8-729-922-37 | TRANSISTOR 2SD2144S  |
| Q511    | 8-729-107-77 | TRANSISTOR 2SC3623-L |
| Q512    | 8-729-107-77 | TRANSISTOR 2SC3623-L |
| Q513    | 8-729-107-77 | TRANSISTOR 2SC3623-L |
| Q514    | 8-729-900-61 | TRANSISTOR DTA114ES  |
| Q515    | 8-729-900-80 | TRANSISTOR DTC114ES  |
| Q516    | 8-729-900-80 | TRANSISTOR DTC114ES  |
| Q517    | 8-729-173-38 | TRANSISTOR 2SA733    |
| Q518    | 8-729-900-80 | TRANSISTOR DTC114ES  |
| Q519    | 8-729-119-78 | TRANSISTOR 2SC2785   |
| Q520    | 8-729-119-78 | TRANSISTOR 2SC2785   |
| Q521    | 8-729-900-80 | TRANSISTOR DTC114ES  |
| Q551    | 8-729-900-89 | TRANSISTOR DTC144ES  |
| Q651    | 8-729-920-26 | TRANSISTOR DTB114ES  |
| Q652    | 8-729-920-26 | TRANSISTOR DTB114ES  |
| Q653    | 8-729-920-26 | TRANSISTOR DTB114ES  |
| Q654    | 8-729-900-80 | TRANSISTOR DTC114ES  |
| Q655    | 8-729-900-80 | TRANSISTOR DTC114ES  |
| Q701    | 8-729-900-80 | TRANSISTOR DTC114ES  |
| Q702    | 8-729-904-27 | TRANSISTOR 2SD1761-E |
| Q703    | 8-729-904-27 | TRANSISTOR 2SD1761-E |
| Q704    | 8-729-119-78 | TRANSISTOR 2SC2785   |
| Q705    | 8-729-110-33 | TRANSISTOR 2SA1409-L |
| Q706    | 8-729-364-72 | TRANSISTOR 2SB647    |
| Q707    | 8-729-904-27 | TRANSISTOR 2SD1761-E |
| Q708    | 8-729-107-77 | TRANSISTOR 2SC3623-L |
| Q709    | 8-729-900-74 | TRANSISTOR DTC143TS  |
| Q710    | 8-729-119-78 | TRANSISTOR 2SC2785   |
| Q751    | 8-729-107-25 | TRANSISTOR 2SD1585-L |
| Q752    | 8-729-119-78 | TRANSISTOR 2SC2785   |
| Q753    | 8-729-119-78 | TRANSISTOR 2SC2785   |
| Q754    | 8-729-900-74 | TRANSISTOR DTC143TS  |
| Q755    | 8-729-173-38 | TRANSISTOR 2SA733    |
| Q756    | 8-729-173-38 | TRANSISTOR 2SA733    |
| Q757    | 8-729-111-67 | TRANSISTOR 2SB1094-L |
| Q801    | 8-729-900-65 | TRANSISTOR DTA114ES  |
| Q802    | 8-729-900-65 | TRANSISTOR DTA114ES  |
| Q803    | 8-729-900-65 | TRANSISTOR DTA114ES  |
| Q804    | 8-729-177-43 | TRANSISTOR 2SD774    |
| Q805    | 8-729-801-83 | TRANSISTOR 2SB1013   |
| Q806    | 8-729-801-83 | TRANSISTOR 2SB1013   |
| Q807    | 8-729-205-02 | TRANSISTOR 2SA1150   |
| Q808    | 8-729-801-83 | TRANSISTOR 2SB1013   |
| Q809    | 8-729-801-93 | TRANSISTOR 2SD1387   |
| Q810    | 8-729-801-93 | TRANSISTOR 2SD1387   |
| Q811    | 8-729-801-83 | TRANSISTOR 2SB1013   |
| Q812    | 8-729-900-61 | TRANSISTOR DTA114ES  |
| Q851    | 8-729-900-61 | TRANSISTOR DTA114ES  |
| Q852    | 8-729-900-61 | TRANSISTOR DTA114ES  |
| Q901    | 8-729-900-61 | TRANSISTOR DTA114ES  |
| Q902    | 8-729-900-61 | TRANSISTOR DTA114ES  |

| Ref.No. | Part No.     | Description            |
|---------|--------------|------------------------|
| Q903    | 8-729-900-61 | TRANSISTOR DTA114ES    |
| Q904    | 8-729-900-61 | TRANSISTOR DTA114ES    |
| Q905    | 8-729-900-61 | TRANSISTOR DTA114ES    |
| Q906    | 8-729-900-61 | TRANSISTOR DTA114ES    |
| Q907    | 8-729-900-61 | TRANSISTOR DTA114ES    |
| Q908    | 8-729-900-61 | TRANSISTOR DTA114ES    |
| Q909    | 8-729-900-89 | TRANSISTOR DTC144ES    |
| Q910    | 8-729-900-89 | TRANSISTOR DTC144ES    |
| Q1001   | 1-807-509-11 | PHOTO SENSOR (HEAD SW) |
| Q1002   | 1-807-509-11 | PHOTO SENSOR (HEAD SW) |
| R101    | 1-249-590-11 | CARBON 39K 5% 1/4W     |
| R102    | 1-247-700-11 | CARBON 100 5% 1/4W     |
| R103    | 1-249-603-11 | CARBON 130K 5% 1/4W    |
| R104    | 1-247-722-11 | CARBON 5.6K 5% 1/4W    |
| R105    | 1-247-716-11 | CARBON 1.8K 5% 1/4W    |
| R106    | 1-247-138-00 | CARBON 2K 5% 1/4W      |
| R107    | 1-247-887-00 | CARBON 220K 5% 1/4W    |
| R108    | 1-249-429-11 | CARBON 10K 5% 1/4W     |
| R109    | 1-249-431-11 | CARBON 15K 5% 1/4W     |
| R110    | 1-247-717-11 | CARBON 2.2K 5% 1/4W    |
| R111    | 1-249-415-11 | CARBON 680 5% 1/4W     |
| R112    | 1-249-427-11 | CARBON 6.8K 5% 1/4W    |
| R113    | 1-259-419-11 | CARBON 430 5% 1/6W     |
| R114    | 1-259-437-11 | CARBON 2.4K 5% 1/6W    |
| R115    | 1-259-443-11 | CARBON 4.3K 5% 1/6W    |
| R116    | 1-249-441-11 | CARBON 100K 5% 1/4W    |
| R117    | 1-249-429-11 | CARBON 10K 5% 1/4W     |
| R151    | 1-249-421-11 | CARBON 2.2K 5% 1/4W    |
| R152    | 1-249-441-11 | CARBON 100K 5% 1/4W    |
| R153    | 1-249-441-11 | CARBON 100K 5% 1/4W    |
| R154    | 1-249-423-11 | CARBON 3.3K 5% 1/4W    |
| R155    | 1-249-428-11 | CARBON 8.2K 5% 1/4W    |
| R156    | 1-259-419-11 | CARBON 430 5% 1/6W     |
| R157    | 1-259-443-11 | CARBON 4.3K 5% 1/6W    |
| R158    | 1-259-437-11 | CARBON 2.4K 5% 1/6W    |
| R159    | 1-249-427-11 | CARBON 6.8K 5% 1/4W    |
| R160    | 1-249-415-11 | CARBON 680 5% 1/4W     |
| R161    | 1-247-722-11 | CARBON 5.6K 5% 1/4W    |
| R162    | 1-249-561-11 | CARBON 2.4K 5% 1/4W    |
| R163    | 1-247-725-11 | CARBON 70K 5% 1/4W     |
| R164    | 1-249-417-11 | CARBON 1K 5% 1/4W      |
| R165    | 1-249-469-11 | CARBON 100K 5% 1/4W    |
| R166    | 1-247-721-11 | CARBON 4.7K 5% 1/4W    |
| R167    | 1-249-435-11 | CARBON 33K 5% 1/4W     |
| R168    | 1-249-432-11 | CARBON 18K 5% 1/4W     |
| R169    | 1-249-393-11 | CARBON 10 5% 1/4W      |
| R170    | 1-247-883-00 | CARBON 150K 5% 1/4W    |
| R171    | 1-247-725-11 | CARBON 10K 5% 1/4W     |
| R301    | 1-259-436-11 | CARBON 2.2K 5% 1/6W    |
| R302    | 1-249-421-11 | CARBON 2.2K 5% 1/4W    |
| R303    | 1-215-453-00 | METAL 22K 1% 1/6W      |
| R304    | 1-215-457-00 | METAL 33K 1% 1/6W      |
| R305    | 1-249-408-11 | CARBON 180 5% 1/4W     |
| R306    | 1-249-436-11 | CARBON 39K 5% 1/4W     |
| R307    | 1-249-429-11 | CARBON 10K 5% 1/4W     |
| R308    | 1-247-713-11 | CARBON 1K 5% 1/4W      |
| R309    | 1-249-497-11 | CARBON 33K 5% 1/4W     |
| R311    | 1-249-433-11 | CARBON 22K 5% 1/4W     |

| Ref.No. | Part No.     | Description |      |    |      |
|---------|--------------|-------------|------|----|------|
| R312    | 1-249-421-11 | CARBON      | 2.2K | 5% | 1/4W |
| R313    | 1-247-862-11 | CARBON      | 20K  | 5% | 1/4W |
| R314    | 1-247-704-11 | CARBON      | 220  | 5% | 1/4W |
| R315    | 1-215-453-00 | METAL       | 22K  | 1% | 1/6W |
| R316    | 1-215-454-00 | METAL       | 24K  | 1% | 1/6W |
| R351    | 1-249-425-11 | CARBON      | 4.7K | 5% | 1/4W |
| R503    | 1-249-437-11 | CARBON      | 47K  | 5% | 1/4W |
| R504    | 1-215-469-00 | METAL       | 100K | 1% | 1/6W |
| R511    | 1-249-429-11 | CARBON      | 10K  | 5% | 1/4W |
| R512    | 1-249-437-11 | CARBON      | 47K  | 5% | 1/4W |
| R513    | 1-249-437-11 | CARBON      | 47K  | 5% | 1/4W |
| R514    | 1-215-469-00 | METAL       | 100K | 1% | 1/6W |
| R515    | 1-249-429-11 | CARBON      | 10K  | 5% | 1/4W |
| R516    | 1-249-429-11 | CARBON      | 10K  | 5% | 1/4W |
| R517    | 1-249-429-11 | CARBON      | 10K  | 5% | 1/4W |
| R519    | 1-247-864-11 | CARBON      | 24K  | 5% | 1/4W |
| R520    | 1-249-441-11 | CARBON      | 100K | 5% | 1/4W |
| R521    | 1-249-421-11 | CARBON      | 2.2K | 5% | 1/4W |
| R522    | 1-249-427-11 | CARBON      | 6.8K | 5% | 1/4W |
| R523    | 1-249-437-11 | CARBON      | 47K  | 5% | 1/4W |
| R524    | 1-249-426-11 | CARBON      | 5.6K | 5% | 1/4W |
| R525    | 1-247-840-00 | CARBON      | 2.4K | 5% | 1/4W |
| R526    | 1-249-425-11 | CARBON      | 4.7K | 5% | 1/4W |
| R527    | 1-249-440-11 | CARBON      | 82K  | 5% | 1/4W |
| R528    | 1-249-440-11 | CARBON      | 82K  | 5% | 1/4W |
| R529    | 1-249-390-11 | CARBON      | 5.6  | 5% | 1/4W |
| R530    | 1-249-429-11 | CARBON      | 10K  | 5% | 1/4W |
| R531    | 1-249-429-11 | CARBON      | 10K  | 5% | 1/4W |
| R532    | 1-249-431-11 | CARBON      | 15K  | 5% | 1/4W |
| R533    | 1-249-434-11 | CARBON      | 27K  | 5% | 1/4W |
| R534    | 1-249-439-11 | CARBON      | 68K  | 5% | 1/4W |
| R551    | 1-249-437-11 | CARBON      | 47K  | 5% | 1/4W |
| R552    | 1-249-437-11 | CARBON      | 47K  | 5% | 1/4W |
| R553    | 1-249-429-11 | CARBON      | 10K  | 5% | 1/4W |
| R554    | 1-249-421-11 | CARBON      | 2.2K | 5% | 1/4W |
| R555    | 1-249-409-11 | CARBON      | 220  | 5% | 1/4W |
| R601    | 1-249-435-11 | CARBON      | 33K  | 5% | 1/4W |
| R602    | 1-247-874-11 | CARBON      | 62K  | 5% | 1/4W |
| R603    | 1-247-880-11 | CARBON      | 110K | 5% | 1/4W |
| R604    | 1-247-876-11 | CARBON      | 75K  | 5% | 1/4W |
| R605    | 1-249-435-11 | CARBON      | 33K  | 5% | 1/4W |
| R606    | 1-247-874-11 | CARBON      | 62K  | 5% | 1/4W |
| R607    | 1-247-887-00 | CARBON      | 220K | 5% | 1/4W |
| R608    | 1-249-439-11 | CARBON      | 68K  | 5% | 1/4W |
| R609    | 1-249-440-11 | CARBON      | 82K  | 5% | 1/4W |
| R610    | 1-249-441-11 | CARBON      | 100K | 5% | 1/4W |
| R611    | 1-249-437-11 | CARBON      | 47K  | 5% | 1/4W |
| R612    | 1-249-439-11 | CARBON      | 68K  | 5% | 1/4W |
| R613    | 1-247-885-00 | CARBON      | 180K | 5% | 1/4W |
| R614    | 1-249-441-11 | CARBON      | 100K | 5% | 1/4W |
| R615    | 1-249-437-11 | CARBON      | 47K  | 5% | 1/4W |
| R616    | 1-249-438-11 | CARBON      | 56K  | 5% | 1/4W |
| R617    | 1-247-872-11 | CARBON      | 51K  | 5% | 1/4W |
| R618    | 1-247-876-11 | CARBON      | 75K  | 5% | 1/4W |
| R651    | 1-249-425-11 | CARBON      | 4.7K | 5% | 1/4W |
| R652    | 1-249-405-11 | CARBON      | 100  | 5% | 1/4W |
| R653    | 1-249-435-11 | CARBON      | 33K  | 5% | 1/4W |

| Ref.No. | Part No.     | Description |      |    |      |
|---------|--------------|-------------|------|----|------|
| R654    | 1-249-425-11 | CARBON      | 4.7K | 5% | 1/4W |
| R655    | 1-249-427-11 | CARBON      | 6.8K | 5% | 1/4W |
| R701    | 1-249-413-11 | CARBON      | 470  | 5% | 1/4W |
| R702    | 1-249-425-11 | CARBON      | 4.7K | 5% | 1/4W |
| R703    | 1-249-429-11 | CARBON      | 10K  | 5% | 1/4W |
| R704    | 1-249-421-11 | CARBON      | 2.2K | 5% | 1/4W |
| R705    | 1-249-421-11 | CARBON      | 2.2K | 5% | 1/4W |
| R706    | 1-249-425-11 | CARBON      | 5.6K | 5% | 1/4W |
| R707    | 1-249-429-11 | CARBON      | 10K  | 5% | 1/4W |
| R708    | 1-249-433-11 | CARBON      | 22K  | 5% | 1/4W |
| R709    | 1-247-752-11 | CARBON      | 1K   | 5% | 1/2W |
| R710    | 1-249-417-11 | CARBON      | 1K   | 5% | 1/4W |
| R711    | 1-249-425-11 | CARBON      | 4.7K | 5% | 1/4W |
| R712    | 1-249-426-11 | CARBON      | 5.6K | 5% | 1/4W |
| R713    | 1-249-417-11 | CARBON      | 1K   | 5% | 1/4W |
| R751    | 1-247-710-11 | CARBON      | 560  | 5% | 1/4W |
| R752    | 1-247-714-11 | CARBON      | 1.2K | 5% | 1/4W |
| R753    | 1-247-704-11 | CARBON      | 220  | 5% | 1/4W |
| R754    | 1-247-725-11 | CARBON      | 10K  | 5% | 1/4W |
| R755    | 1-247-708-11 | CARBON      | 470  | 5% | 1/4W |
| R756    | 1-247-717-11 | CARBON      | 2.2K | 5% | 1/4W |
| R757    | 1-247-717-11 | CARBON      | 2.2K | 5% | 1/4W |
| R758    | 1-247-717-11 | CARBON      | 2.2K | 5% | 1/4W |
| R759    | 1-247-717-11 | CARBON      | 2.2K | 5% | 1/4W |
| R801    | 1-249-441-11 | CARBON      | 100K | 5% | 1/4W |
| R802    | 1-249-425-11 | CARBON      | 4.7K | 5% | 1/4W |
| R803    | 1-249-441-11 | CARBON      | 100K | 5% | 1/4W |
| R805    | 1-249-437-11 | CARBON      | 47K  | 5% | 1/4W |
| R806    | 1-247-903-00 | CARBON      | 1M   | 5% | 1/4W |
| R807    | 1-247-887-00 | CARBON      | 220K | 5% | 1/4W |
| R808    | 1-247-887-00 | CARBON      | 220K | 5% | 1/4W |
| R809    | 1-249-435-11 | CARBON      | 33K  | 5% | 1/4W |
| R810    | 1-249-435-11 | CARBON      | 33K  | 5% | 1/4W |
| R811    | 1-249-409-11 | CARBON      | 220  | 5% | 1/4W |
| R812    | 1-249-409-11 | CARBON      | 220  | 5% | 1/4W |
| R813    | 1-249-418-11 | CARBON      | 1.2K | 5% | 1/4W |
| R814    | 1-249-423-11 | CARBON      | 3.3K | 5% | 1/4W |
| R815    | 1-249-423-11 | CARBON      | 3.3K | 5% | 1/4W |
| R816    | 1-249-417-11 | CARBON      | 1K   | 5% | 1/4W |
| R817    | 1-249-417-11 | CARBON      | 1K   | 5% | 1/4W |
| R818    | 1-249-414-11 | CARBON      | 560  | 5% | 1/4W |
| R819    | 1-249-417-11 | CARBON      | 1K   | 5% | 1/4W |
| R820    | 1-247-840-00 | CARBON      | 2.4K | 5% | 1/4W |
| R821    | 1-249-417-11 | CARBON      | 1K   | 5% | 1/4W |
| R822    | 1-249-417-11 | CARBON      | 1K   | 5% | 1/4W |
| R823    | 1-249-437-11 | CARBON      | 47K  | 5% | 1/4W |
| R824    | 1-249-437-11 | CARBON      | 47K  | 5% | 1/4W |
| R825    | 1-249-437-11 | CARBON      | 47K  | 5% | 1/4W |
| R826    | 1-249-437-11 | CARBON      | 47K  | 5% | 1/4W |
| R827    | 1-249-437-11 | CARBON      | 47K  | 5% | 1/4W |
| R828    | 1-249-437-11 | CARBON      | 47K  | 5% | 1/4W |
| R829    | 1-249-437-11 | CARBON      | 47K  | 5% | 1/4W |
| R830    | 1-249-437-11 | CARBON      | 47K  | 5% | 1/4W |
| R831    | 1-249-437-11 | CARBON      | 47K  | 5% | 1/4W |
| R832    | 1-249-437-11 | CARBON      | 47K  | 5% | 1/4W |
| R833    | 1-249-437-11 | CARBON      | 47K  | 5% | 1/4W |
| R834    | 1-249-430-11 | CARBON      | 12K  | 5% | 1/4W |

| Ref.No. | Part No.     | Description                             |
|---------|--------------|---|
| R835    | 1-247-862-11 | CARBON 20K 5% 1/4W                      |
| R836    | 1-249-431-11 | CARBON 15K 5% 1/4W                      |
| R837    | 1-249-425-11 | CARBON 4.7K 5% 1/4W                     |
| R838    | 1-249-437-11 | CARBON 47K 5% 1/4W                      |
| R839    | 1-249-405-11 | CARBON 100 5% 1/4W                      |
| R840    | 1-249-429-11 | CARBON 10K 5% 1/4W                      |
| R851    | 1-247-903-00 | CARBON 1M 5% 1/4W                       |
| R852    | 1-249-422-11 | CARBON 2.7K 5% 1/4W                     |
| R853    | 1-249-432-11 | CARBON 18K 5% 1/4W                      |
| R854    | 1-249-430-11 | CARBON 12K 5% 1/4W                      |
| R855    | 1-249-437-11 | CARBON 47K 5% 1/4W                      |
| R901    | 1-249-407-11 | CARBON 150 5% 1/4W                      |
| R902    | 1-249-407-11 | CARBON 150 5% 1/4W                      |
| R903    | 1-249-411-11 | CARBON 330 5% 1/4W                      |
| R904    | 1-249-407-11 | CARBON 150 5% 1/4W                      |
| R905    | 1-249-441-11 | CARBON 100K 5% 1/4W                     |
| R906    | 1-249-441-11 | CARBON 100K 5% 1/4W                     |
| R907    | 1-249-441-11 | CARBON 100K 5% 1/4W                     |
| R908    | 1-249-441-11 | CARBON 100K 5% 1/4W                     |
| R909    | 1-249-441-11 | CARBON 100K 5% 1/4W                     |
| R910    | 1-249-441-11 | CARBON 100K 5% 1/4W                     |
| R911    | 1-249-441-11 | CARBON 100K 5% 1/4W                     |
| R912    | 1-249-441-11 | CARBON 100K 5% 1/4W                     |
| R913    | 1-249-441-11 | CARBON 100K 5% 1/4W                     |
| R914    | 1-249-441-11 | CARBON 100K 5% 1/4W                     |
| R915    | 1-249-441-11 | CARBON 100K 5% 1/4W                     |
| R916    | 1-249-441-11 | CARBON 100K 5% 1/4W                     |
| R917    | 1-249-441-11 | CARBON 100K 5% 1/4W                     |
| R918    | 1-249-441-11 | CARBON 100K 5% 1/4W                     |
| R919    | 1-249-429-11 | CARBON 10K 5% 1/4W                      |
| R920    | 1-249-437-11 | CARBON 47K 5% 1/4W                      |
| R921    | 1-249-437-11 | CARBON 47K 5% 1/4W                      |
| R922    | 1-249-437-11 | CARBON 47K 5% 1/4W                      |
| R923    | 1-215-452-00 | METAL 20K 1% 1/6W                       |
| R924    | 1-215-452-00 | METAL 20K 1% 1/6W                       |
| R925    | 1-215-452-00 | METAL 20K 1% 1/6W                       |
| R926    | 1-215-452-00 | METAL 20K 1% 1/6W                       |
| R927    | 1-215-452-00 | METAL 20K 1% 1/6W                       |
| R928    | 1-215-452-00 | METAL 20K 1% 1/6W                       |
| R929    | 1-215-452-00 | METAL 20K 1% 1/6W                       |
| R930    | 1-215-445-00 | METAL 10K 1% 1/6W                       |
| R931    | 1-215-445-00 | METAL 10K 1% 1/6W                       |
| R932    | 1-215-445-00 | METAL 10K 1% 1/6W                       |
| R933    | 1-215-445-00 | METAL 10K 1% 1/6W                       |
| R934    | 1-215-445-00 | METAL 10K 1% 1/6W                       |
| R935    | 1-215-445-00 | METAL 10K 1% 1/6W                       |
| R936    | 1-215-460-00 | METAL 43K 1% 1/6W                       |
| R937    | 1-215-425-00 | METAL 1.5K 1% 1/6W                      |
| RV101   | 1-228-993-00 | RES. ADJ. CARBON 5K                     |
| RV151   | 1-228-995-00 | RES. ADJ. CARBON 20K                    |
| RV152   | 1-228-995-00 | RES. ADJ. CARBON 22K (REC BIAS (L))     |
| RV201   | 1-228-993-00 | RES. ADJ. CARBON 5K                     |
| RV251   | 1-228-995-00 | RES. ADJ. CARBON 20K                    |
| RV252   | 1-228-995-00 | RES. ADJ. CARBON 22K (REC BIAS (R))     |
| RV511   | 1-238-097-11 | RES. VAR. CARBON 20K/20K (REC LEVEL)    |
| RV512   | 1-238-085-11 | REA. VAR. CARBON 20K/20K (PHONES LEVEL) |
| RV513   | 1-238-373-11 | RES. VAR. CARBON 5K (BIAS)              |

| Ref.No. | Part No.       | Description                        |
|---------|----------------|------------------------------------|
| S511    | 1-571-741-11   | SWITCH, ROTARY (DOLBY NR)          |
| S512    | 1-571-742-11   | SWITCH, ROTARY (MPX FILTER)        |
| S701    | 1-570-103-21   | SWITCH, PUSH (1 KEY)(POWER)        |
| S702    | △.1-570-307-11 | (E)...SWITCH, VOLTAGE CHANGE       |
| S801    | 1-571-742-11   | SWITCH, ROTARY (MONITOR)           |
| S901    | 1-554-596-21   | SWITCH, KEY BOARD (■)              |
| S902    | 1-554-596-21   | SWITCH, KEY BOARD (▶▶)             |
| S903    | 1-554-596-21   | SWITCH, KEY BOARD (◀◀)             |
| S904    | 1-554-596-21   | SWITCH, KEY BOARD (▷)              |
| S905    | 1-554-596-21   | SWITCH, KEY BOARD (REC●)           |
| S906    | 1-554-596-21   | SWITCH, KEY BOARD (PAUSE  )        |
| S907    | 1-554-596-21   | SWITCH, KEY BOARD (REC MUTE●)      |
| S908    | 1-554-596-21   | SWITCH, KEY BOARD (TAPE OPERATION) |
| S909    | 1-554-596-21   | SWITCH, KEY BOARD (RESET)          |
| S910    | 1-554-596-21   | SWITCH, KEY BOARD (MEMORY)         |
| S911    | 1-554-423-00   | SWITCH, SLIDE (TIMER)              |
| S1001   | 1-571-081-11   | SWITCH (ERASE PROOF)               |
| S1002   | 1-571-081-11   | SWITCH (CASSETTE HALF DET)         |
| S1003   | 1-571-081-11   | SWITCH (70u DET)                   |
| S1004   | 1-571-081-11   | SWITCH (METAL DET)                 |
| S1005   | 1-571-820-11   | SWITCH, LEAF                       |
| SPK101  | 1-235-186-00   | ENCAPSULATED COMPONENT             |
| SPK151  | 1-235-186-00   | ENCAPSULATED COMPONENT             |
| SPK201  | 1-235-186-00   | ENCAPSULATED COMPONENT             |
| SPK251  | 1-235-186-00   | ENCAPSULATED COMPONENT             |
| T151    | 1-433-344-11   | TRANSFORMER, BIAS OSCILLATION      |
| T251    | 1-433-344-11   | TRANSFORMER, BIAS OSCILLATION      |
| T511    | 1-433-343-11   | TRANSFORMER, BIAS OSCILLATION      |
| T701    | △.1-449-484-11 | (AEP,UK)...TRANSFORMER, POWER      |
| T701    | △.1-449-575-11 | (E).....TRANSFORMER, POWER         |
| T701    | △.1-449-576-11 | (US,K630)...TRANSFORMER, POWER     |
| THP701  | 1-808-612-11   | THERMISTOR, POSITIVE               |
| X801    | 1-567-772-11   | VIBRATOR, CERAMIC 4.19MHz          |
| X851    | 1-527-532-00   | OSCILLATOR, CERAMIC 400kHz         |

### ACCESSORY & PACKING MATERIAL

|               |                                  |
|---------------|----------------------------------|
| 1-465-104-11  | (E)...REMOTE COMMANDER (RM-J600) |
| 1-551-734-11  | CORD, CONNECTION (RK-74A)        |
| *3-349-005-01 | CUSHION                          |
| *3-577-909-31 | (K630ES)...INDIVIDUAL CARTON     |
| *3-577-909-51 | (K630)...INDIVIDUAL CARTON       |
| 3-750-049-11  | (AEP,UK,E)...MANUAL, INSTRUCTION |
| 3-750-049-21  | (US).....MANUAL, INSTRUCTION     |
| 3-750-049-31  | (K630).....MANUAL, INSTRUCTION   |
| 3-750-049-41  | (AEP).....MANUAL, INSTRUCTION    |
| 3-703-450-01  | (US)...INSTRUCTION               |
| 3-750-274-41  | (E)...INSTRUCTION                |
| 4-384-285-01  | (E)...COVER, BATTERY             |

**Note:**  
The components identified by mark  $\Delta$  or dotted line with mark  $\Delta$  are critical for safety. Replace only with part number specified.

**Note:**  
Les composants identifiés par une marque  $\Delta$  sont critiques pour la sécurité. Ne les remplacer que par une pièce portant le numéro spécifié.