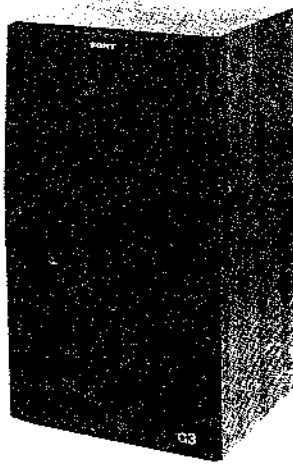


SS-13

Canadian Model
E Model
AEP Model



CARBOCON SPEAKER SYSTEM

SPECIFICATIONS

Speaker System:	Three-way, sealed enclosure	Crossover Frequencies:	900 Hz 6000 Hz
Low frequency:	25 cm (10 inches) cone type	Level Controls:	Tweeter: from -3 dB to +17 dB continuous adjustable Mid-range: from 1 dB to +4 dB continuous adjustable
Mid frequency:	8 cm (3 1/8 inches) cone type	Terminals:	Push-on
High frequency:	5 cm (2 inches) cone type	Volume:	46 liters
Nominal Impedance:	8 Ω	Dimensions:	Approx. 248 mm (9 3/4 inches) x 335 mm (13 1/8 inches) x 241 mm (9 1/2 inches) including depth
Normal Power		Weight:	Approx. 17 kg (38 pounds) 12 kg (27 pounds) including cable
Handling Capacity:	60 W (100 W RMS)		
Music Power			
Handling Capacity:	120 W (100 W RMS)		
Sensitivity:	92 dB (1 W, 1 m) 7.5 W +06 dB (1 m) (100 W RMS)		
Effective Frequency Range:	40 Hz - 20,000 Hz		

SONY®

SERVICE MANUAL

1. DISASSEMBLY

Remove in the numerical order as shown below.

1-1. SPEAKER UNIT

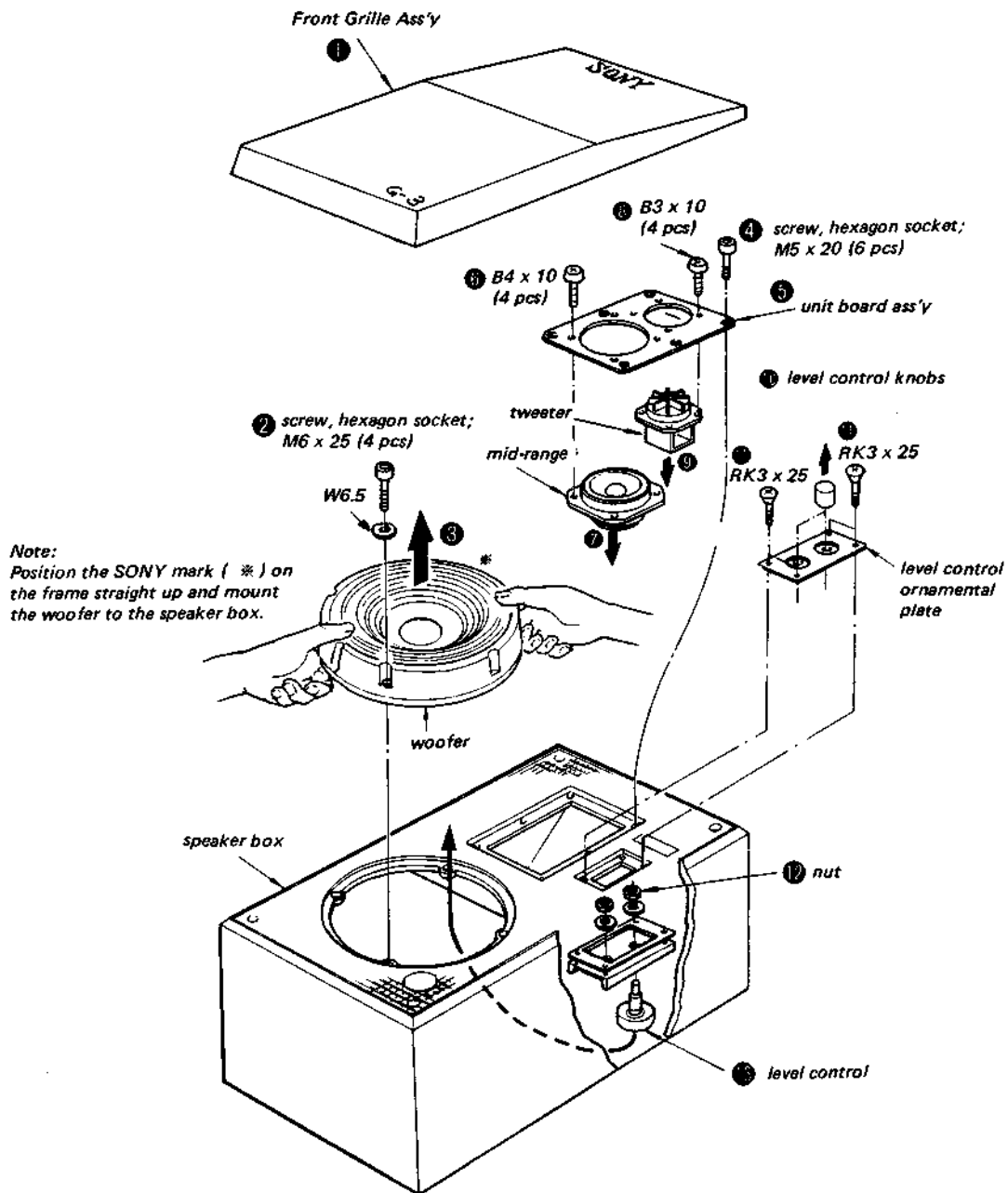
- Woofers: ● → ⑦ → ⑧
- Mid-range: ● → ④ → ⑤ → ⑥ → ⑦
- Tweeter: ● → ④ → ⑤ → ⑥ → ⑦

1-2. ATTENUATOR

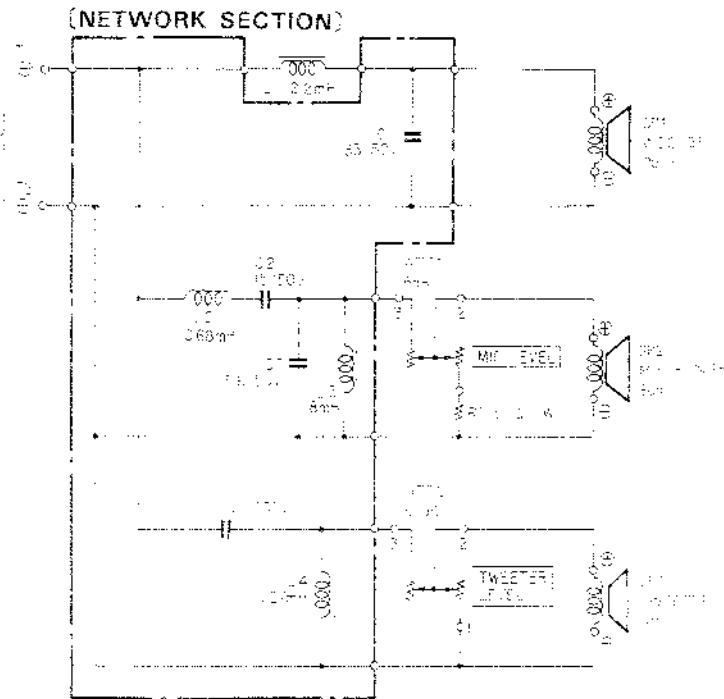
- ① → ② → ③ → ④ → ⑤ → ⑥ → ⑦

1-3. INSPECTION OF NETWORK SECTION

Remove the woofer and inspect the network circuit board.

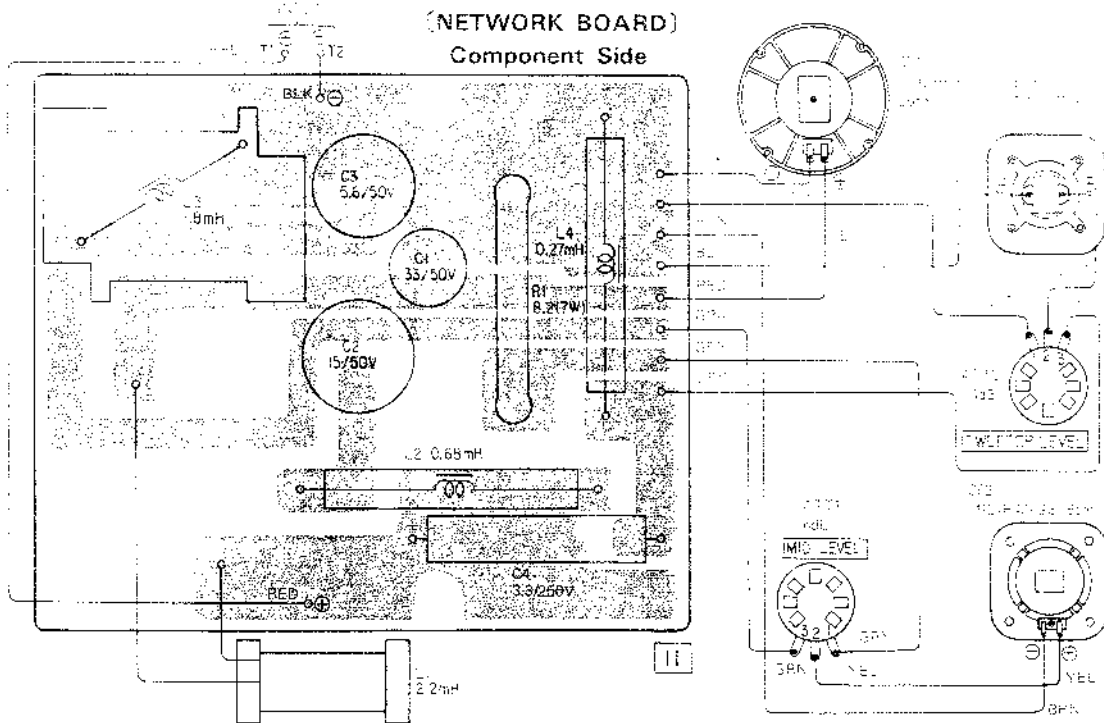


2. SCHEMATIC DIAGRAM



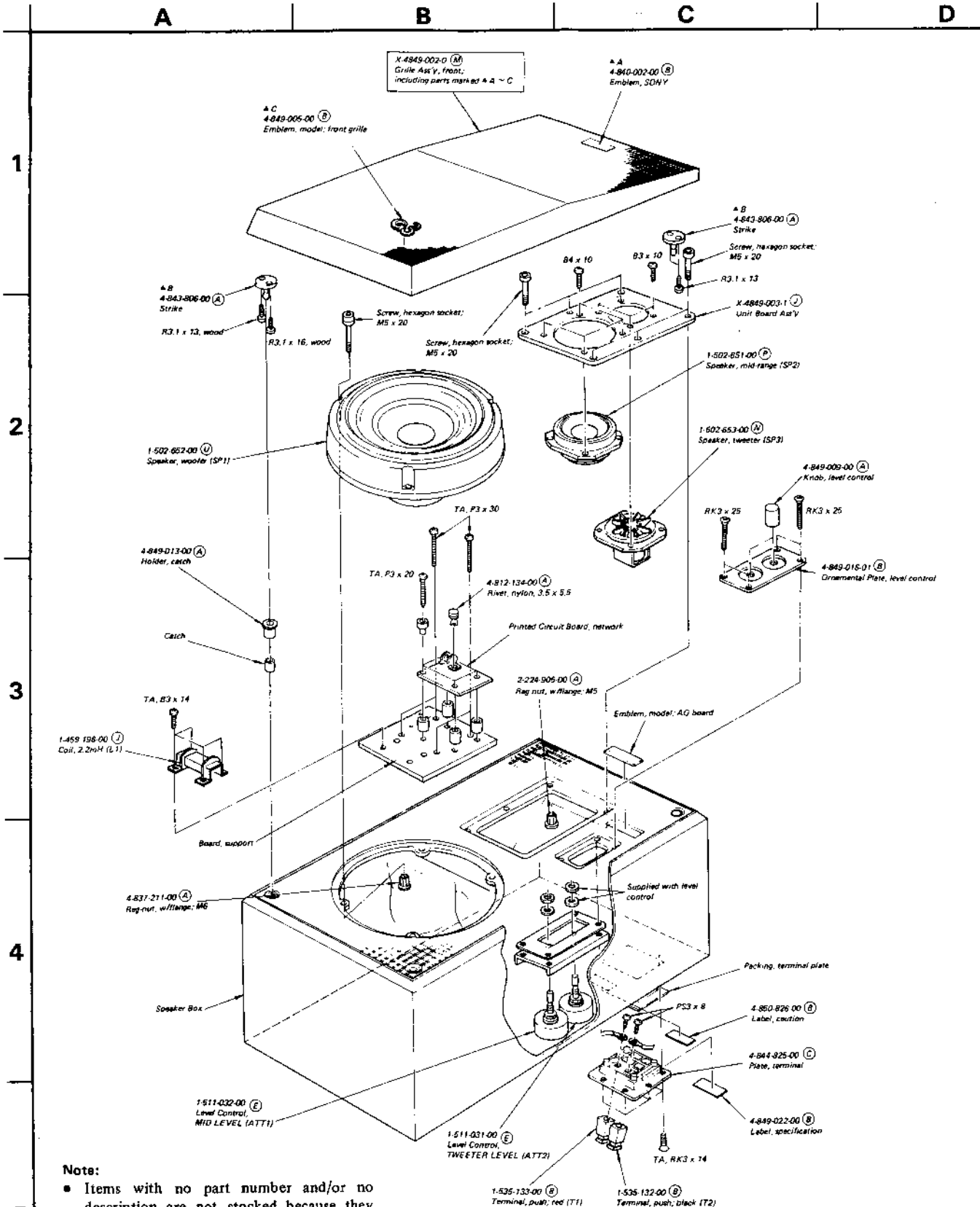
Note: All resistors and capacitors are in ohms, kilohms, and micro unless otherwise noted.

3. MOUNTING DIAGRAM



4. EXPLODED VIEW

Note: Circled letters (A) to (Z) are applicable to European models only.



- Notes:**
- Items with no part number and/or no description are not stocked because they are seldom required for routine service.
 - All screws are Phillips (cross recess) type unless otherwise noted.
 - (-) = slotted head

Note: Circled letters (A to Z) are applicable to European models only.

5. ELECTRICAL PARTS LIST

Ref. No. Part No. Description

CAPACITORS

All capacitors are in μF .
50WV or less are not indicated except for electrolytics.
 $\mu\text{F} = \mu\mu\text{F}$, elect = electrolytic

C1	1-123-237-11	(B) 33	50V	elect
C2	1-123-222-11	(E) 15	50V	elect
C3	1-123-217-11	(C) 5.6	50V	elect
C4	1-130-119-11	(E) 3.3	250V	film

RESISTORS

All resistors are in ohms.

R1	1-217-179-11	(B) 8.2	7W	wirewound
----	--------------	---------	----	-----------

COILS

L1	1-459-198-00	(J) 2.2mH
L2	1-459-170-00	(C) 0.68mH
L3	1-459-164-00	(E) 1.8mH
L4	1-459-175-00	(C) 0.27mH

SPEAKERS

SP1	1-502-652-00	(U) Woofer
SP2	1-502-651-00	(P) Mid-range
SP3	1-502-653-00	(N) Tweeter

MISCELLANEOUS

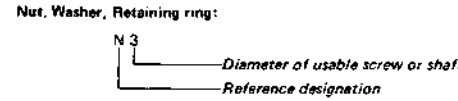
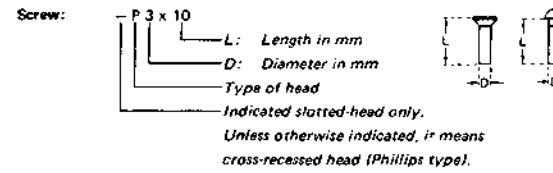
ATT1	1-511-032-00	(E) Level Control, MID LEVEL
ATT2	1-511-031-00	(E) Level Control, TWEETER LEVEL
T1	1-535-133-00	(B) Terminal, push (red)
T2	1-535-132-00	(B) Terminal, push (black)

6. ACCESSORIES & PACKING MATERIAL

Part No. Description

1-534-687-00	(C) Speaker Cord
3-770-039-52	(C) Manual, instruction
4-843-573-00	(D) Bag, plastic
4-849-023-00	(A) Sheet, protection
4-849-024-00	(J) Carton
4-850-822-00	(E) Cushion B
4-850-823-00	(E) Cushion A

HARDWARE NOMENCLATURE



Reference Designation	Shape	Description	Remarks
SCREWS			
P		pan-head screw	binding-head (B) screw for replacement
PWH		pan-head screw with washer face	binding-head (B) screw and flat washer for replacement
PS PSP		pan-head screw with spring washer	binding-head (B) screw and spring washer for replacement
PSW PSPW		pan-head screw with spring and flat washers	binding-head (B) screw and spring and flat washers for replacement
R		round-head screw	binding-head (B) screw for replacement
K		flat-countersunk-head screw	
RK		oval-countersunk-head screw	
B		binding-head screw	
T		truss-head screw	binding-head (B) screw for replacement
F		flat-fillister-head screw	
RF		fillister-head screw	
RV		brazer-head screw	

Reference Designation	Shape	Description	Remarks
SELF-TAPPING SCREWS			
TA		self-tapping screw	ex: TA, P 3 x 10
PTP		pan-head self-tapping screw	binding-head self-tapping (TA, B) screw for replacement
PTPWH		pan-head self-tapping screw with washer face	binding-head self-tapping (TA, B) screw and flat washer for replacement
PTTWH		pan-head thread-rolling screw with washer face	binding-head (B) screw and flat washer for replacement
SET SCREWS			
SC		set screw	
SC		hexagon-socket set screw	ex: SC 2.6 x 4, hexagon socket
NUT			
N		nut	
WASHERS			
W		flat washer	
SW		spring washer	
LW		internal-tooth lock washer	ex: LW3, internal
LW		external-tooth lock washer	ex: LW3, external
RETAINING RINGS			
E		retaining ring	
G		grip-type retaining ring	