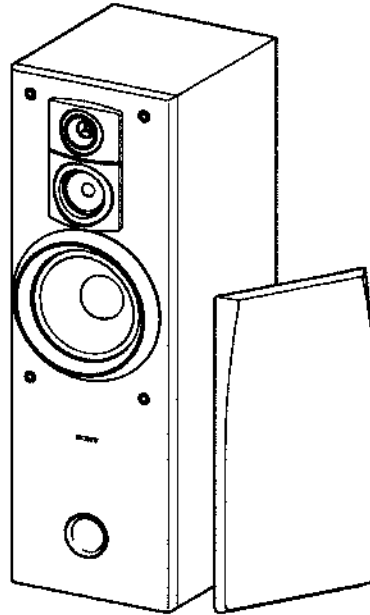


# SS-E455

## SERVICE MANUAL

*AEP Model  
UK Model*



### SPECIFICATIONS

System:	3-way-speaker system
Speaker units:	Woofer: 20 cm, cone type Midrange: 8 cm, cone type Tweeter: 2 cm, dome type
Enclosure type:	Bass reflex
Rated impedance:	8 $\Omega$
Power handling capacity:	Maximum input power 200 W
Sensitivity:	89 dB (1 W, 1 m)
Effective frequency range:	30 – 20.000 Hz
Dimensions:	Approx. 270 x 835 x 270 mm (w/h/d)
Weight:	Approx. 11,3 kg per speaker, net Approx. 24,7 kg in shipping carton

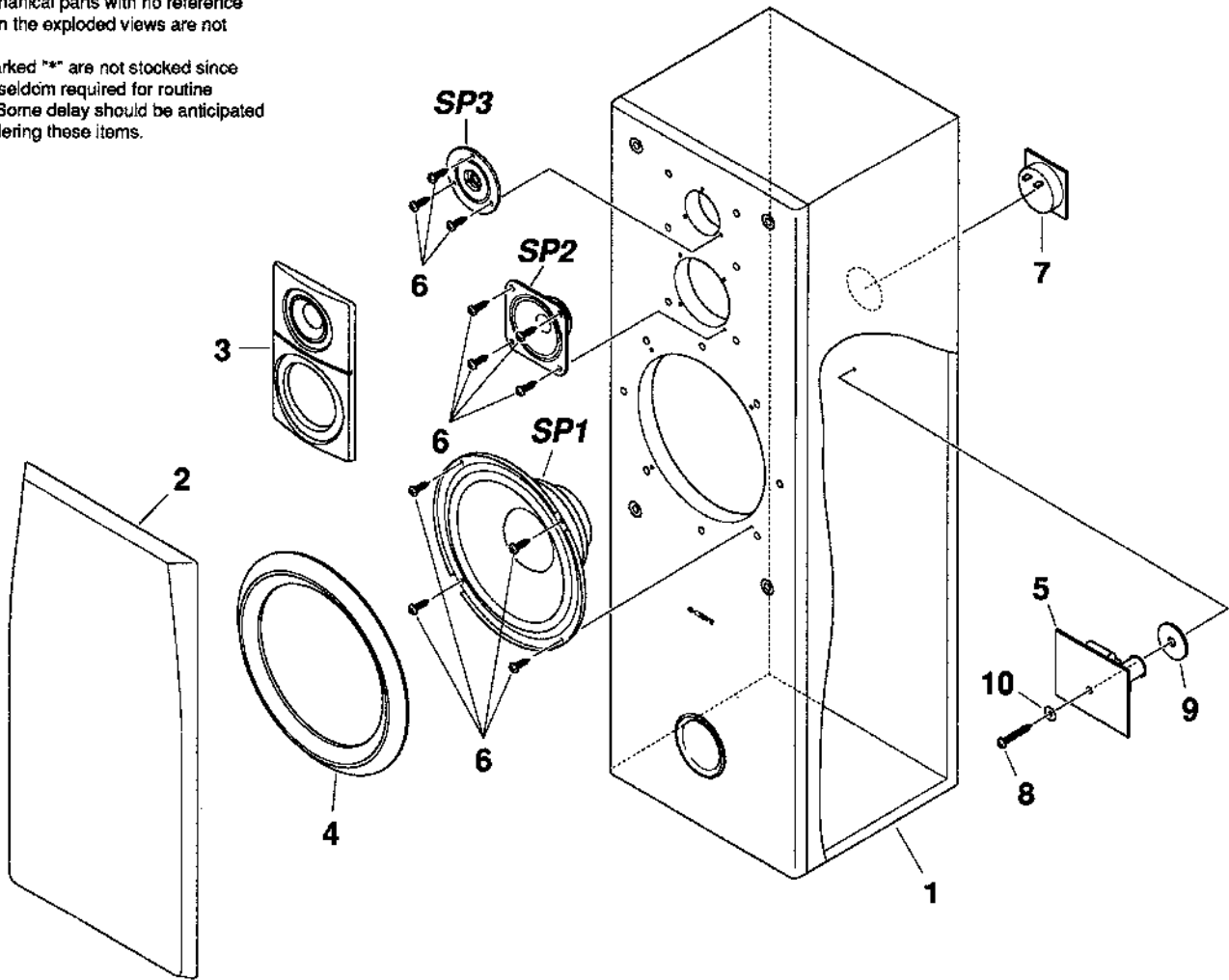
Design and specifications subject to change without notice.

SPEAKER SYSTEM  
**SONY**®

1. EXPLODED VIEW AND PARTS LIST

NOTE:

- The mechanical parts with no reference number in the exploded views are not supplied.
- Items marked "\*" are not stocked since they are seldom required for routine service. Some delay should be anticipated when ordering these items.



Ref. No.	Part No.	Description	Remark
1	X-4943-893-1	SPEAKER CABINET ASSY	
2	X-4943-892-1	GRILLE FRAME ASSY	
3	4-962-887-01	COSMETIC FRAME (TW)	
4	4-962-888-01	COSMETIC FRAME (W)	
5	1-589-550-11	MOUNTED P.C.B.	
6	4-960-363-01	SCREW +B 3,5 X 16	
7	1-537-529-11	TERMINAL BOARD	
8	4-963-423-01	SCREW +P 4,0 X 50	
9	4-962-102-01	WASHER	
10	4-962-980-01	WASHER	

Ref. No.	Part No.	Description	Remark
SP1	1-504-403-11	SPEAKER (20 cm CONE)	
SP2	1-504-209-11	SPEAKER (8 cm CONE)	
SP3	1-504-379-11	SPEAKER (2 cm DOME)	
<ACCESSORIES & PACKING MATERIALS>			
	1-751-495-11	SPEAKER CORD	
	3-757-217-01	INSTRUCTION MANUAL	
*	4-960-061-01	CUSHION (A)	
*	4-960-062-01	CUSHION (B)	
*	4-960-063-01	CARTON	
*	4-960-064-01	POLYETHYLENE BAG	