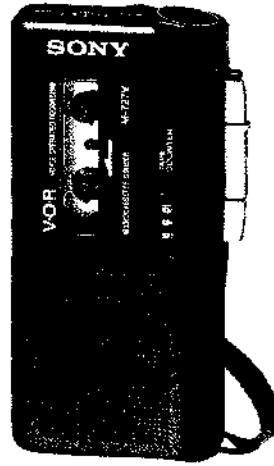


# M-727V

## SERVICE MANUAL



*US Model  
Canadian Model  
AEP Model  
E Model  
Tourist Model*

Model Name Using Similar Mechanism	NEW
Tape Transport Mechanism Type	MZ-627V-14

### SPECIFICATIONS

#### Tape

**MICROCASSETTE™** (normal position type)

#### Recording system

2-track 1-channel monaural

#### Speaker

Approx. 3.6 cm (1<sup>3</sup>/<sub>16</sub> in.) dia.

#### Tape speed

2.4 cm/s (1<sup>1</sup>/<sub>2</sub> ips), 1.2 cm/s (1<sup>1</sup>/<sub>4</sub> ips)

#### Frequency range

250 – 4,000 Hz

#### Input

Microphone input jack (minijack/PLUG IN POWER)  
sensitivity 0.24 mV for 3 kilohms or lower impedance microphone

#### Output

Earphone jack (minijack) for 8 – 300 ohms earphone

#### Power output

160 mW (at 10% harmonic distortion)

#### Battery life (recording)

SONY SUM-3 (NS) 5.5H

SONY ALKALINE AM3 (N) 14H

#### Power requirements

- Two R6 (size AA) batteries: 3 V DC
- Sony AC-E30M AC power adaptor (not supplied):  
220 V AC, 50 Hz (European model)  
120/220 V AC, 50/60 Hz (model for other countries)
- Sony DCC-EI30L car battery cord (not supplied): 12 V car battery

#### Dimensions (w/h/d)

Approx. 66.7 x 120.8 x 25 mm incl. projecting parts and controls

#### Mass

Approx. 180 g incl. batteries

#### Supplied accessories

Microcassette tape MC-30 (1) (AEP, Tourist)

Carrying case (1) (AEP, Tourist)

R6 (size AA) batteries (2) (AEP Tourist)

ERPHONE (1) (Tourist)

Design and specifications are subject to change without notice

**MICROCASSETTE™-CORDER**  
**SONY®**

## SERVICING NOTE

### Flexible Circuit Board Repairing

- Keep the temperature of the soldering iron around 270 °C during repairing.
- Do not touch the soldering iron on the same conductor of the circuit board (within 3 times).
- Be careful not to apply force on the conductor when soldering or unsoldering.

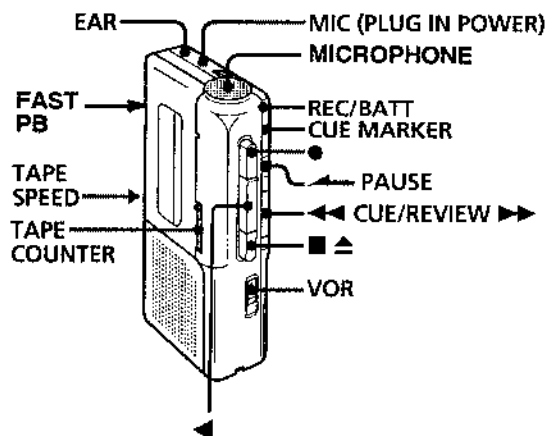
### Notes on chip component replacement

- Never reuse a disconnected chip component.
- Notice that the minus side of a tantalum capacitor may be damaged by heat.

## SECTION 1 GENERAL

This section is extracted from instruction manual.

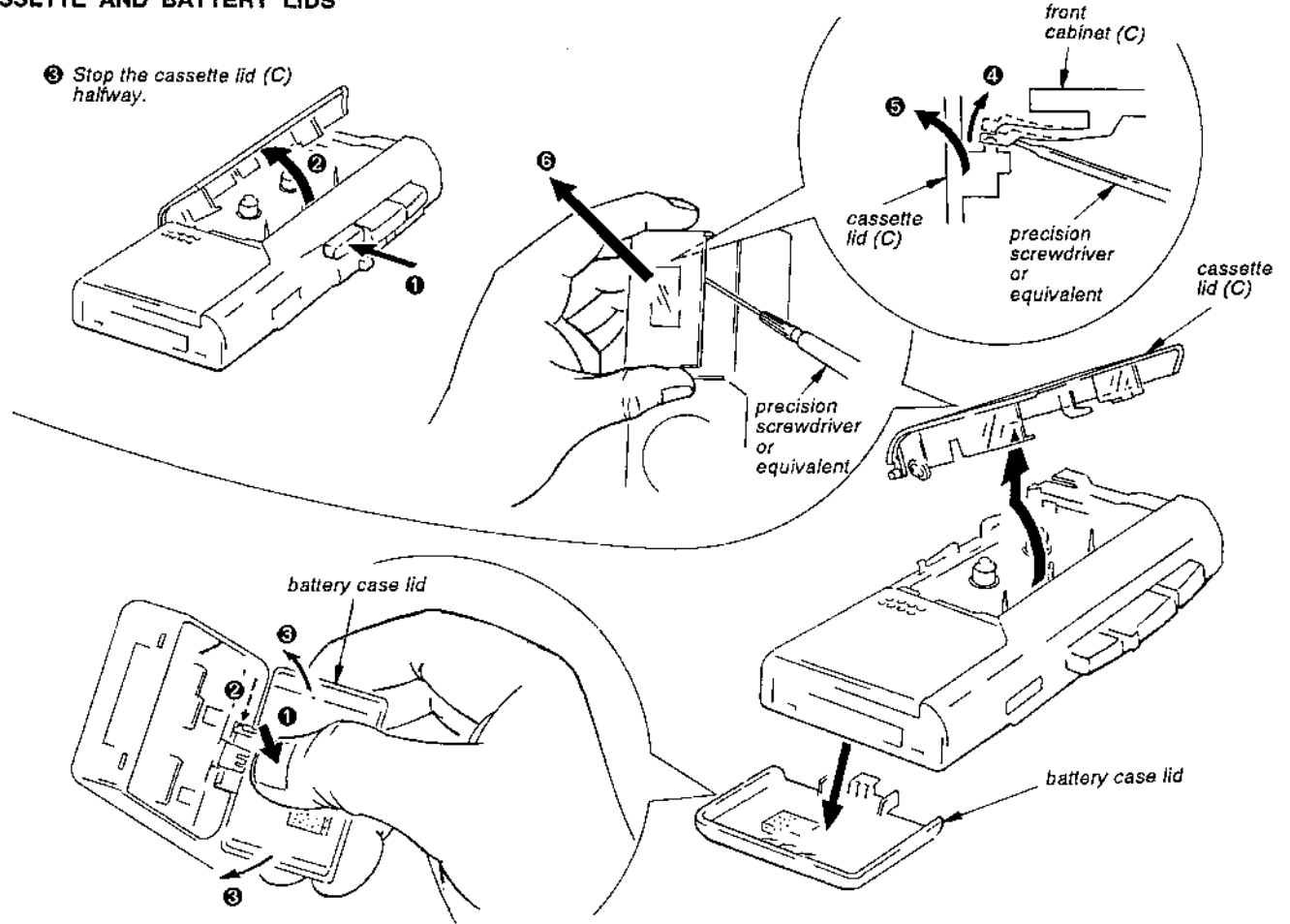
### • Parts Identification



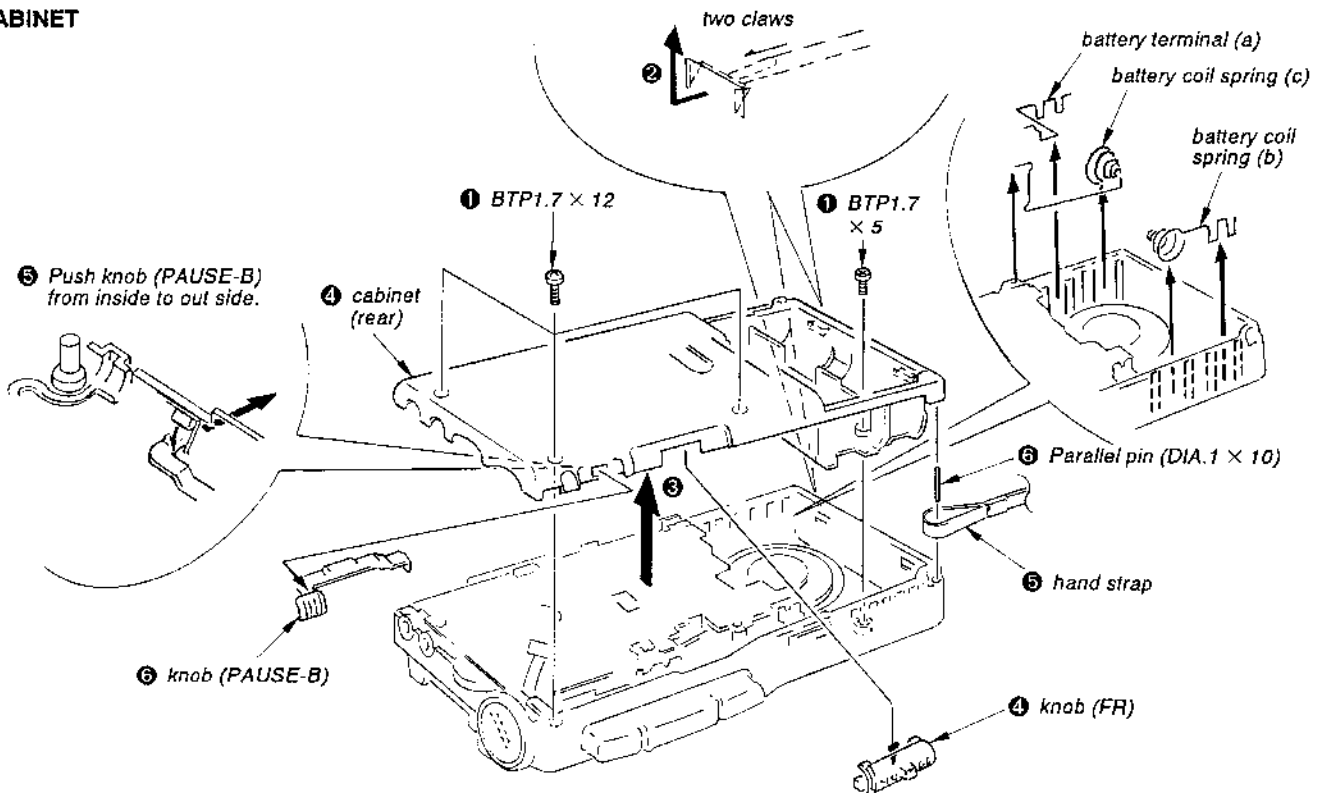
## SECTION 2 DISASSEMBLY

**Note:** Follow the disassembly procedure in the numerical order given.

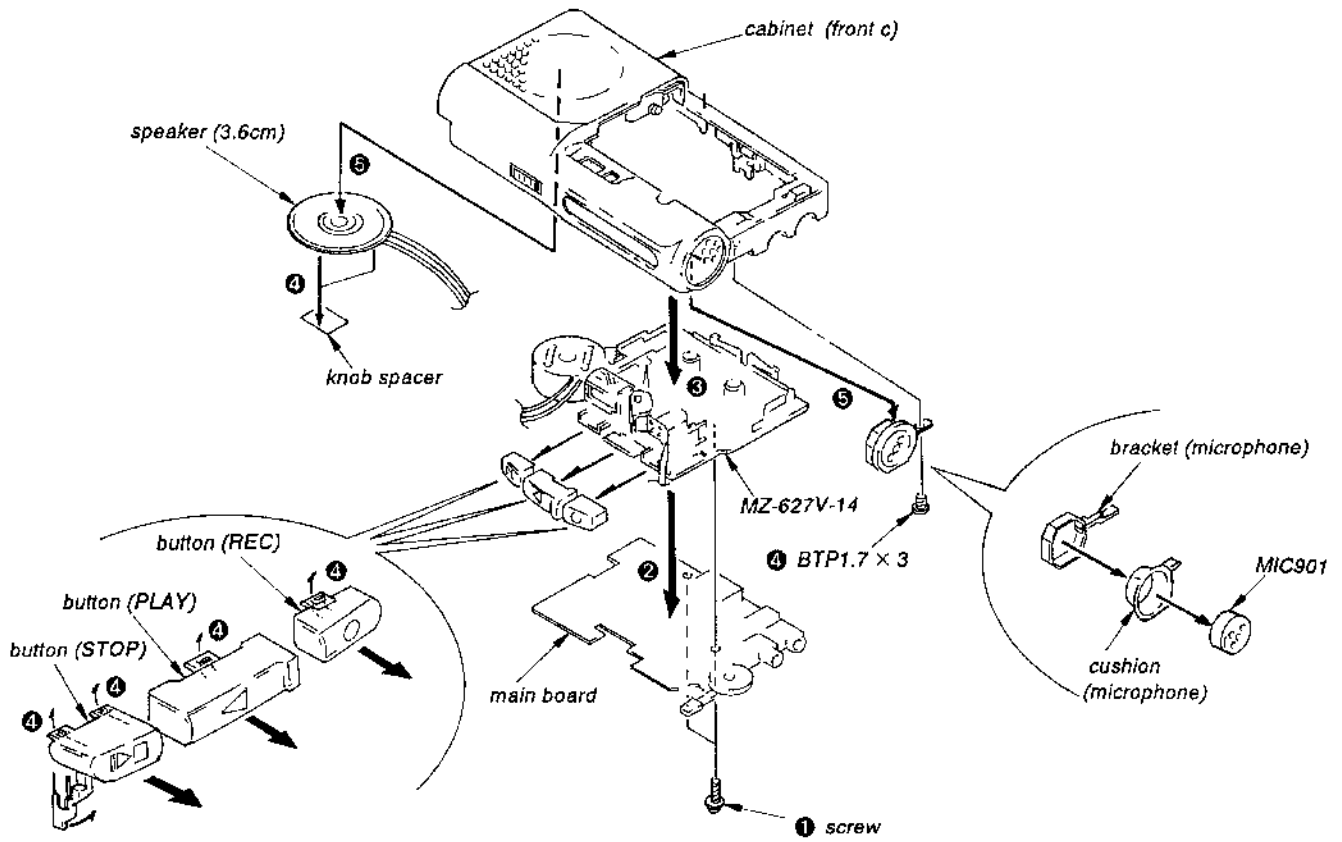
### CASSETTE AND BATTERY LIDS



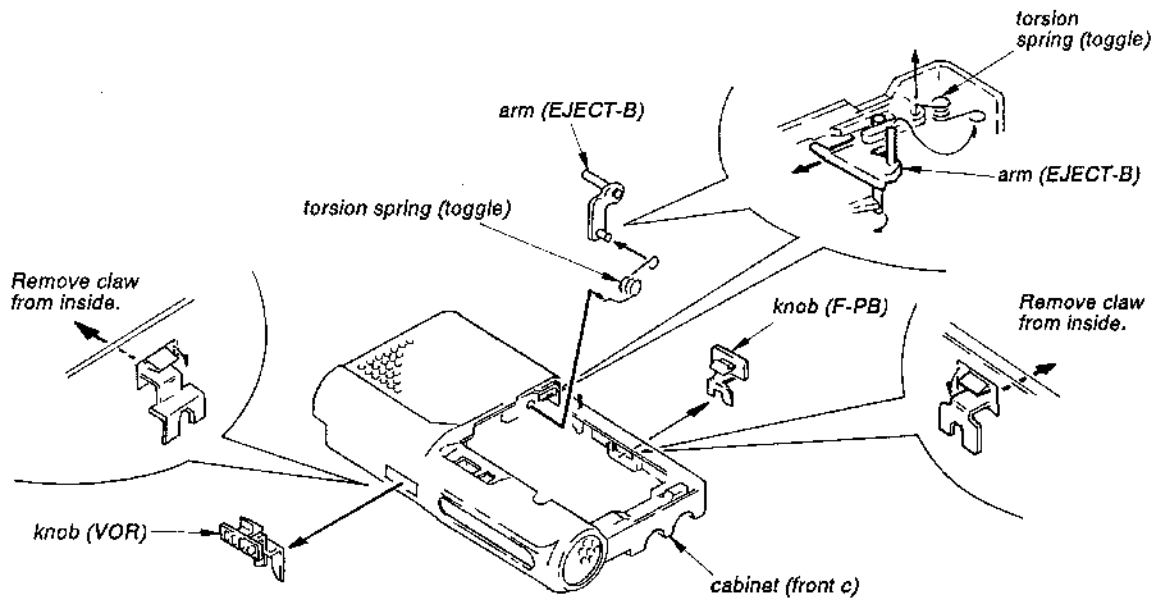
### CABINET



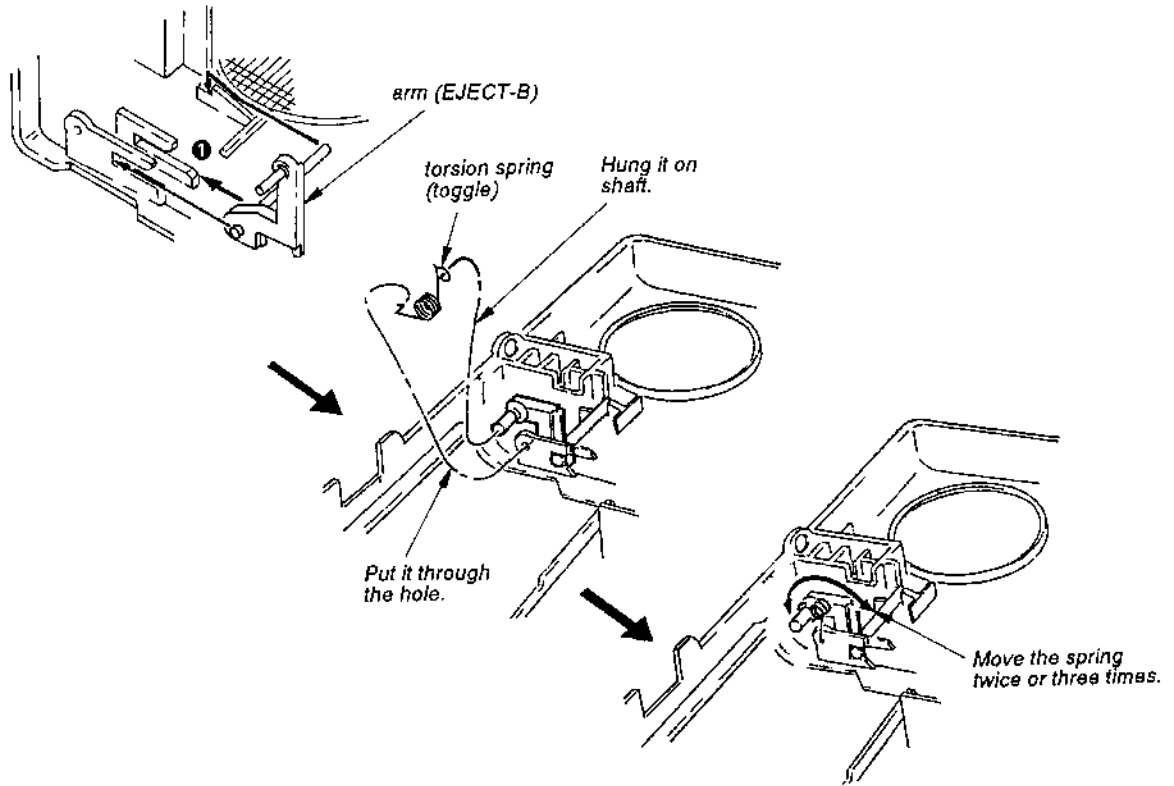
**MECHANISM DECK**



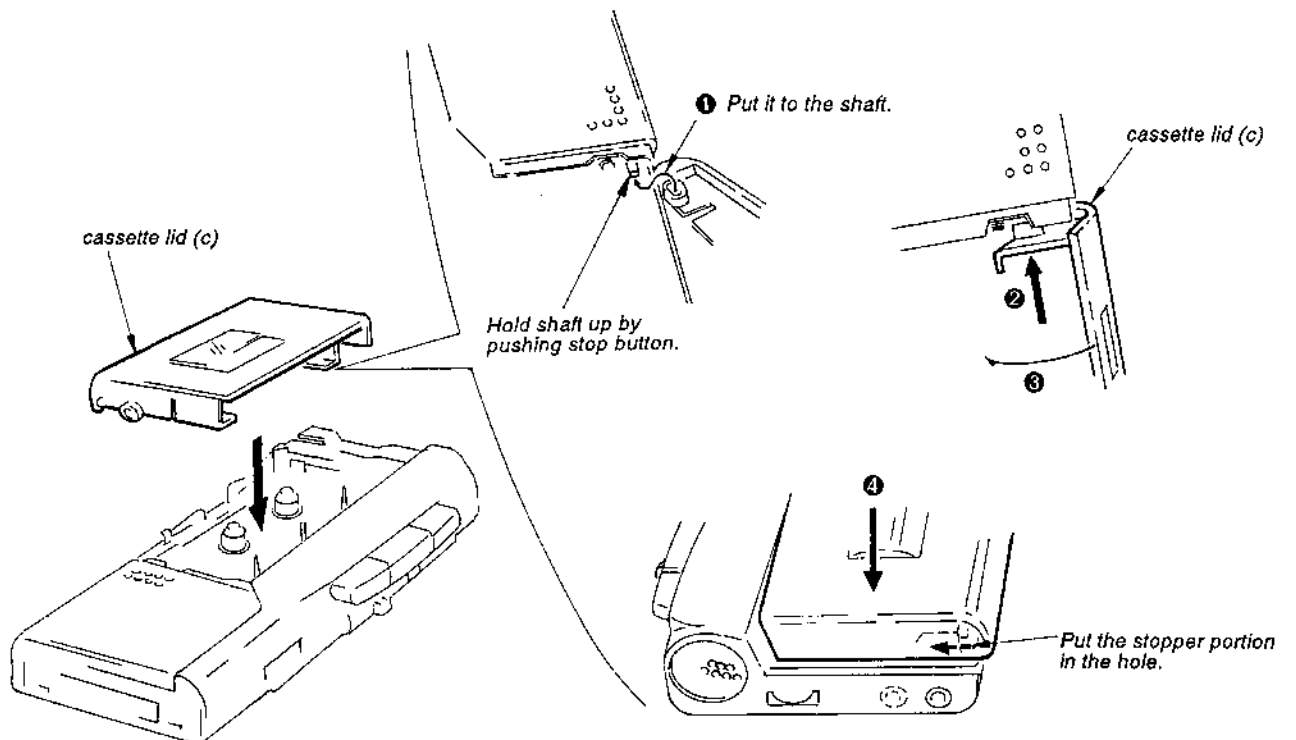
**KNOB**



**ARM (EJECT) FITTING**



**CASSETTE LID (C) FITTING**



## SECTION 3 ADJUSTMENTS

### 2-1. MECHANICAL ADJUSTMENTS AND MEASUREMENT

#### PRECAUTION

- Clean the following parts with a denatured-alcohol-moistened swab:  
 record/playback/erase head    pinch roller  
 rubber belts                      capstan
- Demagnetize the record/playback head with a head demagnetizer.
- Do not use a magnetized screwdriver for the adjustments.
- The adjustments should be performed with the rated power supply voltage unless otherwise noted.  
 Power supply voltage : 3 Vdc  
 TAPE SPEED switch : 2.4 cm

#### Torque Measurement

Torqu	Meter Reading	Torqu Meter
Forward	5~13g • cm (0.07 ~ 0.180oz • inch)	CQ-103M
Fast Forward	5~13g • cm (0.07 ~ 0.180oz • inch)	CQ-201M
Rewind	more than 15 g • cm (more than 0.21oz • inch)	CQ-201M

#### Tape Tension Measurement

Meter	Meter Reading
CQ-403M	more than 30 g (more than 0.42 oz)

### 2-2. ELECTRICAL ADJUSTMENTS

#### Test Tape

Type	Signal	Used for	Tape Speed (cm/s)
WS-12	3 kHz, - 10 dB	Tape Speed Adjustment	1.2
WS-24			2.4
S-2-A030	3 kHz, - 20 dB	Head Azimuth Adjustment	2.4

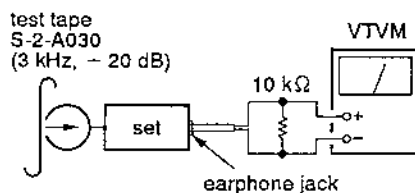
#### Record/Playback Head Azimuth Adjustment

##### setting:

- VOLUME control : mechanical mid  
 TAPE SPEED switch : 2.4 cm/s  
 VOR switch : OFF

##### Procedure:

- Mode : playback

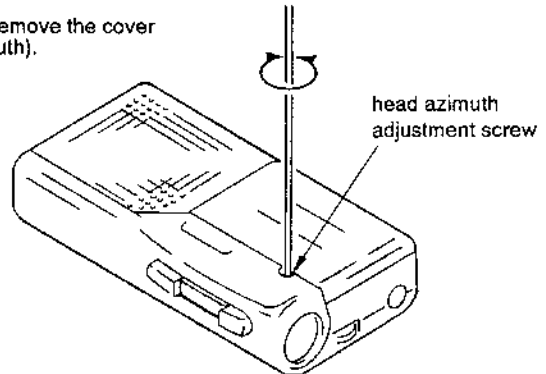


- Turn the adjustment screw to obtain the maximum reading on VTVM.

**Note:** Several peaks may appear, but the maximum.

##### Adjustment Location:

First remove the cover (azimuth).



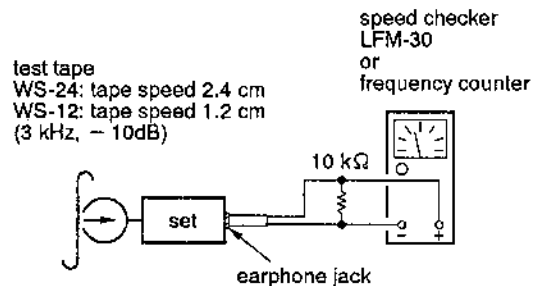
#### Tape Speed adjustment

##### Setting:

- VOLUME control : mechanical mid  
 VOR switch : OFF

##### Procedure:

- Reform 2.4 cm /s speed adjustment before 1.2 cm/s speed adjustment mode : playback

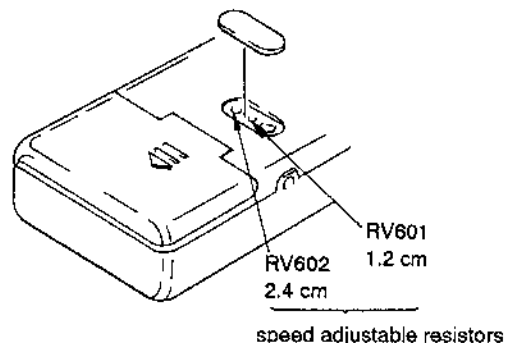


Tape Speed	Speed checker	Frequency counter
2.4 cm/s	± 3%	3,000 ± 90 Hz
1.2 cm/s	± 3%	3,000 ± 90 Hz

Frequency difference between the beginning and the end of the tape should be within 0.5%.

- 2.4cm/s (15 Hz)  
 1.2 cm/s (15 Hz)

##### Adjustment Location:

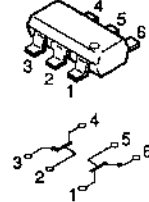


SECTION 4  
DIAGRAMS

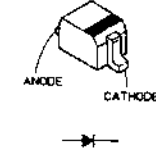
• Semiconductor Location  
• Semiconductor Lead Layouts

Ref. No.	Location
D101	D-12
D102	D-13
D103	D-11
D401	J-5
IC101	H-11
IC601	I-18
IC701	G-13
Q101	D-10
Q102	E-10
Q103	F-10
Q301	J-9
Q302	K-10
Q303	K-9
Q304	K-20
Q401	K-17
Q601	K-19
Q701	G-14
Q702	L-18
Q703	J-18

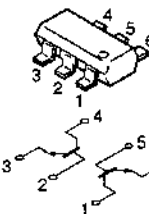
XN4312  
XN4314  
XN4601



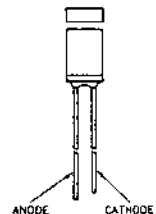
1SS335



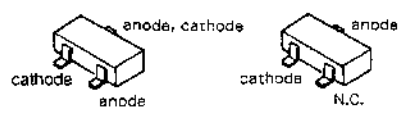
XN4501



GL-8PR42



DA204U



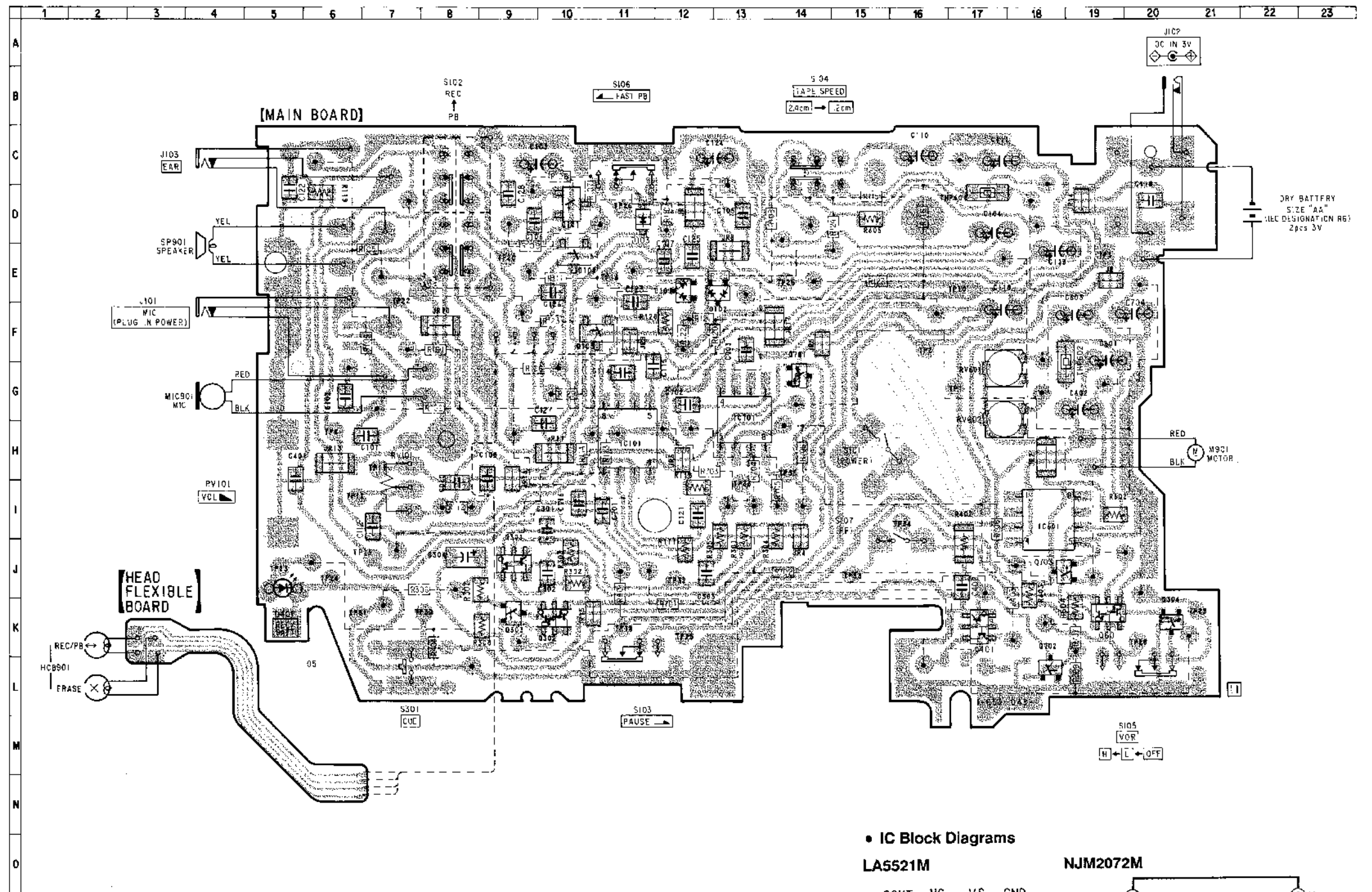
Note on Schematic Diagram:

- All capacitors are in  $\mu\text{F}$  unless otherwise noted.  $\text{pF}$ :  $\mu\text{pF}$  50 WV or less are not indicated except for electrolytics and tantalums.
- All resistors are in  $\Omega$  and  $\frac{1}{4} W$  or less unless otherwise specified.
- : printed resistor.
- : B + Line.
- : panel designation.
- : adjustment for repair.
- Total current is measured with no cassette installed.
- Power voltage is dc 3 V and fed with regulated dc power supply from external power voltage jack.
- Voltages are dc with respect to ground under no-signal conditions.  
no mark: PLAY  
( ) : REC
- Voltages are taken with a VOM (10 M $\Omega/V$ ).  
Voltage variations may be noted due to normal production tolerances.
- Signal path.  
 : PB  
 : REC

Note on Printed Wiring Board:

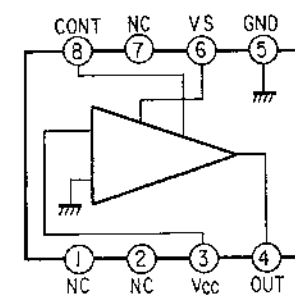
- : parts extracted from the component side.
- : Through hole.
- : Pattern from the side which enables seeing.
- : Pattern of the rear side.
- : printed resistor of the rear side.

4-1. PRINTED WIRING BOARD

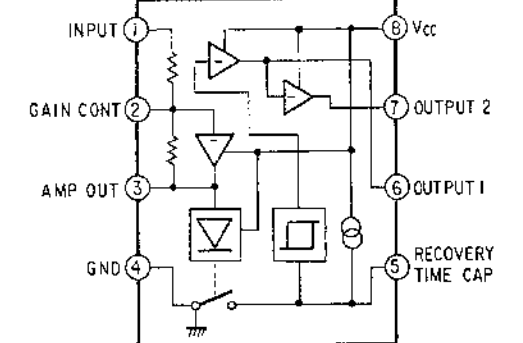


• IC Block Diagrams

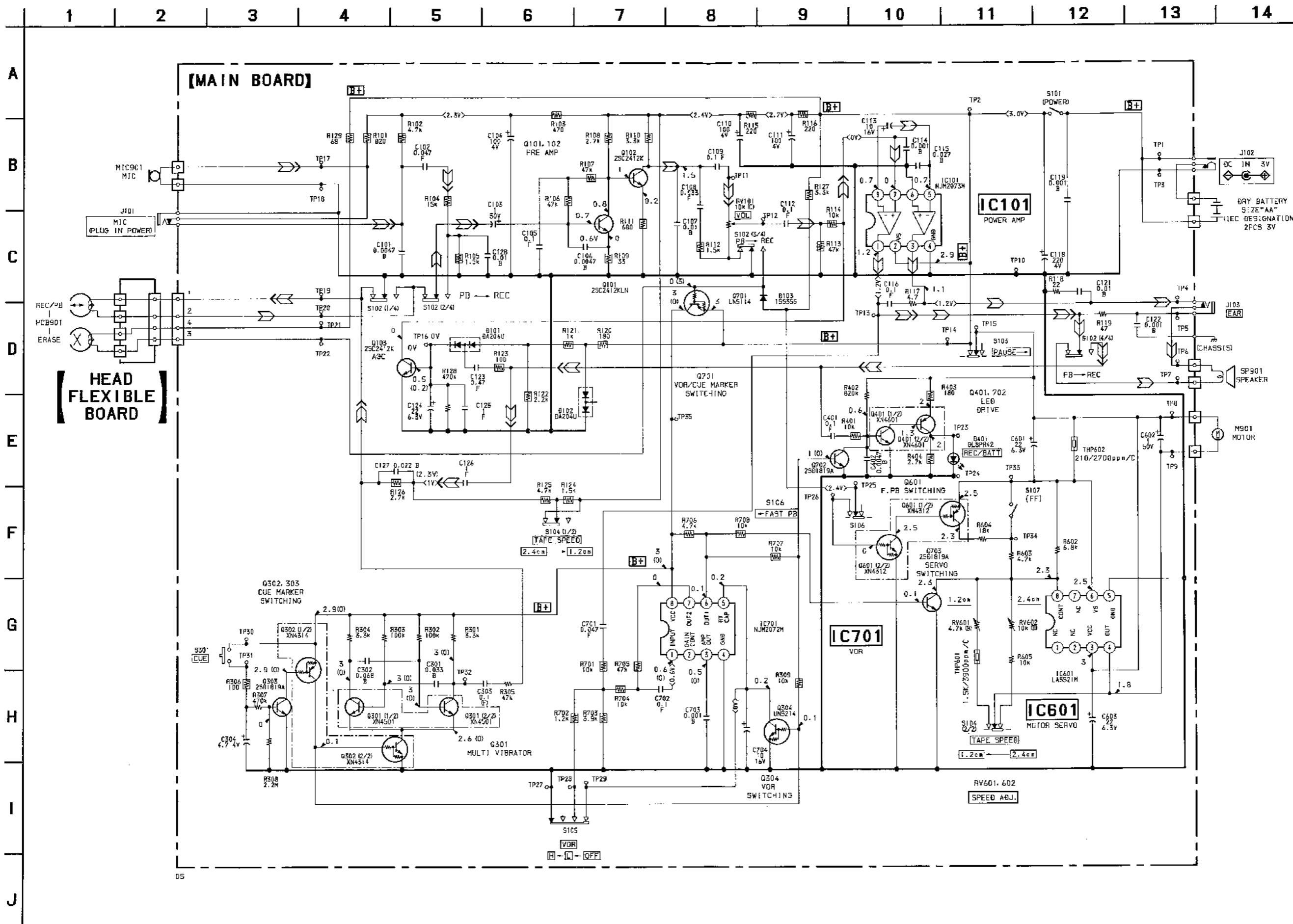
LA5521M



NJM2072M



4-2. SCHEMATIC DIAGRAM



05

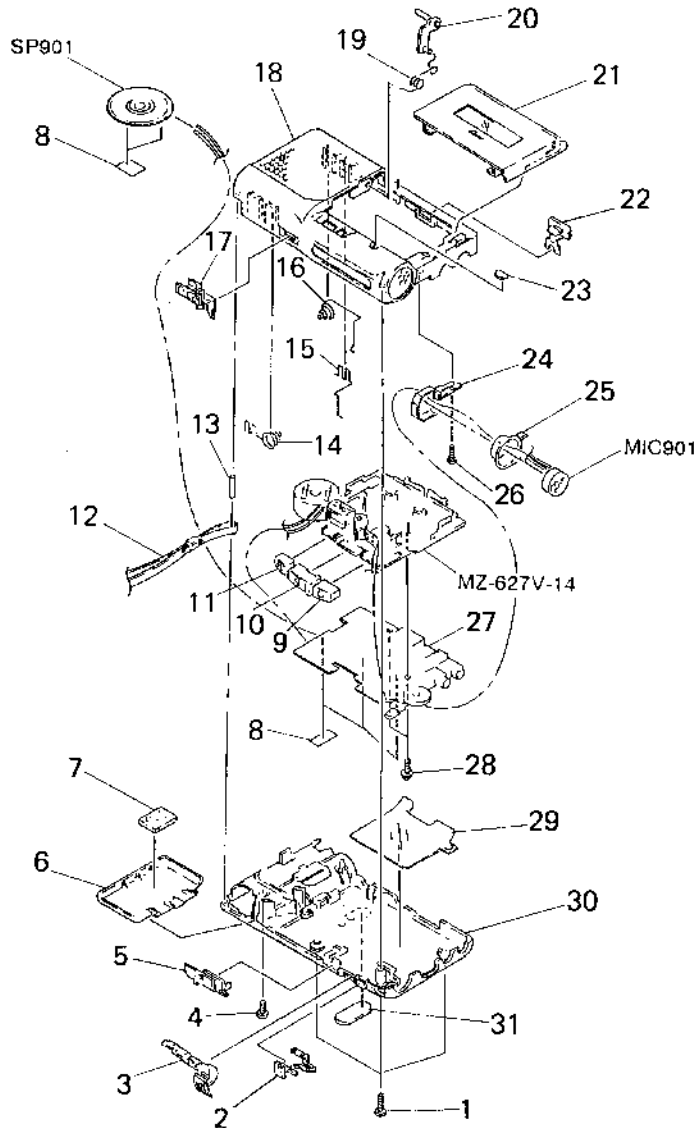


## SECTION 5 EXPLODED VIEWS

**NOTE:**

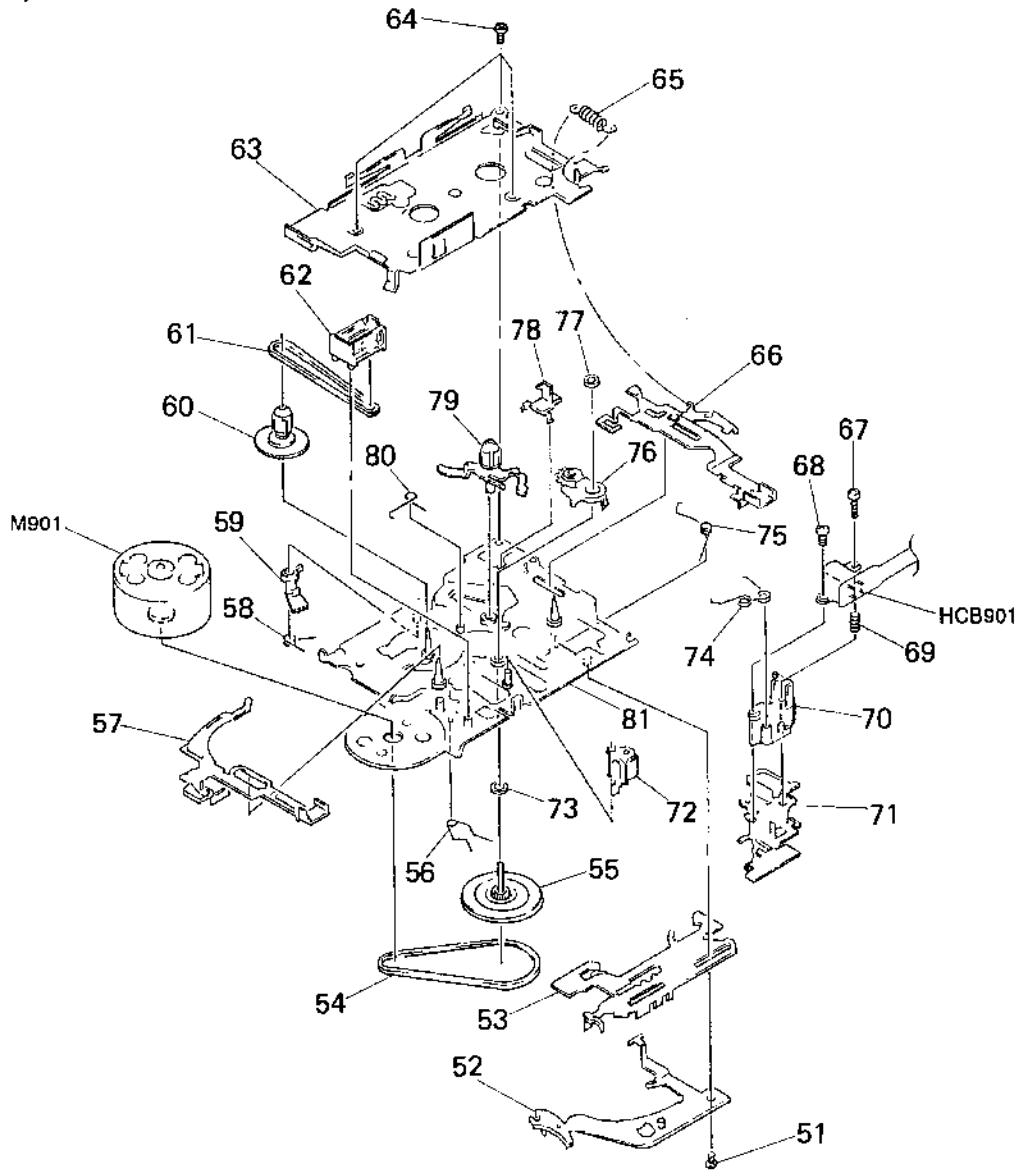
- -XX and -X mean standardized parts, so they may have some difference from the original one.
- Color Indication of Appearance Parts  
Example:  
KNOB, BALANCE (WHITE) ... (RED)  
          ↑                  ↑  
Parts Color    Cabinet's Color
- Items marked "\*" are not stocked since they are seldom required for routine service. Some delay should be anticipated when ordering these items.
- The mechanical parts with no reference number in the exploded views are not supplied.
- Hardware (# mark) list and accessories and packing materials are given in the last of the electrical parts list.

**(1) GENERAL SECTION**



Ref. No.	Part No.	Description	Remark	Ref. No.	Part No.	Description	Remark
1	3-318-203-51	SCREW (B1. 7X12), TAPPING		18	X-3368-595-1	CABINET (FRONT) (C1) ASSY	
2	3-914-944-01	BUTTON (CLUE)		19	3-914-931-01	SPRING (TOGGLE), TORSTON	
3	3-914-945-01	KNOB (PAUSE-B) (PAUSE)		20	3-914-936-01	ARM (EJECT-B)	
4	3-318-203-72	SCREW (B1. 7X5), TAPPING		21	X-3368-592-1	LID (C0) ASSY, CASSETTE	
5	3-914-939-01	KNOB (FR)		22	3-914-878-01	KNOB (F-PB) (FAST PB)	
6	3-914-950-01	LID, BATTERY CASE		23	3-914-952-01	COVER (AZIMUTH)	
* 7	3-914-930-01	CUSHION (BATTERY CASE LID)		* 24	3-914-949-01	BRACKET (MICROPHONE)	
8	3-831-441-XX	SPACER, KNOB		* 25	3-914-937-01	CUSHION (MICROPHONE)	
9	3-914-948-11	BUTTON (REC)		26	3-318-382-31	SCREW (1. 7X3), TAPPING	
10	3-914-947-11	BUTTON (PLAY)		* 27	A-3016-595-A	MAIN BOARD, COMPLETE	
11	3-914-946-11	BUTTON (STOP)		28	3-342-156-51	SCREW	
12	3-328-319-11	STRAP, HAND		29	3-914-929-01	PAPER, SHIELD	
13	3-669-481-07	PIN (DIA 1X10), PARALLEL		* 30	3-914-958-31	CABINET (REAR)	
14	3-914-934-01	SPRING (B), BATTERY COIL		31	3-358-363-11	PLATE, BLIND	
15	3-914-933-01	TERMINAL (A), BATTERY		MIC901	1-542-136-11	MICROPHONE, ELECTRET CONDENSER	
16	3-914-932-01	SPRING (C), BATTERY COIL		SP901	1-544-657-12	SPEAKER (3. 6CM)	
17	3-914-879-01	KNOB (VOR)					

(2) MECHANISM SECTION  
(MZ-627V-14)



Ref. No.	Part No.	Description	Remark	Ref. No.	Part No.	Description	Remark
	51	3-704-243-11 SCREW (PL. 7X2.0)			68	3-704-245-42 SCREW (PL. 4X3.0)	
*	52	3-914-920-01 PLATE (FR), LOCK			69	3-378-792-01 SPRING, COMPRESSION	
*	53	3-914-919-01 SLIDER (FR)			70	3-914-914-01 GUIDE, TAPE	
	54	3-377-420-11 BELT		*	71	3-914-913-01 LEVER (PLAY)	
	55	X-3368-702-1 FLYWHEEL (1.3) ASSY			72	X-3368-585-1 PINCH LEVER ASSY	
	56	3-914-903-01 SPRING (FR), TORSION			73	3-350-945-11 WASHER	
*	57	X-3368-486-1 LEVER (STOP) ASSY			74	3-914-902-01 SPRING (P), TORSION	
	58	3-914-906-01 SPRING (S. OFF), TORSION			75	3-914-904-01 SPRING (PFR), TORSION	
	59	3-914-915-01 ARM (S. OFF)			76	X-3368-584-1 ARM (MIDWAY GEAR) ASSY	
	60	X-3368-582-1 REEL ASSY, T			77	3-331-007-21 WASHER	
	61	3-343-948-01 BELT			78	3-914-916-01 ARM (CKAW DETECTION)	
	62	1-548-579-21 COUNTER, TAPE (SMALL TYPE)			79	X-3368-587-1 REEL ASSY, S	
*	63	3-914-923-01 COVER, MD			80	3-914-907-01 SPRING (MIDWAY GEAR), TORSION	
	64	3-366-892-11 SCREW (M1. 4X1.4)		*	81	X-3368-701-1 CHASSIS (COMP.) ASSY (C), MECH	
	65	3-914-908-01 SPRING (REC LOCK), TENSION			HCB901	1-500-135-11 HEAD, MAGNETIC (REC/PB/ERASE)	
*	66	X-3368-583-1 LEVER (REC) ASSY			M901	1-698-384-11 MOTOR, DC	
	67	3-703-816-82 SCREW (M1. 4X6.0), SPECIAL HEAD					

## SECTION 6 ELECTRICAL PARTS LIST

MAIN

**NOTE:**

- Due to standardization, replacements in the parts list may be different from the parts specified in the diagrams or the components used on the set.
- -XX and -X mean standardized parts, so they may have some difference from the original one.
- RESISTORS  
All resistors are in ohms.  
METAL: Metal-film resistor.  
METAL OXIDE: Metal oxide-film resistor.  
F: nonflammable

- Items marked "\*" are not stocked since they are seldom required for routine service. Some delay should be anticipated when ordering these items.
- SEMICONDUCTORS  
In each case, u:  $\mu$ , for example:  
uA.:  $\mu$ A. uPA.:  $\mu$ PA.  
uPB.:  $\mu$ PB. uPC.:  $\mu$ PC. uPD.:  $\mu$ PD.
- CAPACITORS  
uF:  $\mu$ F
- COILS  
uH:  $\mu$ H

When indicating parts by reference number, please include the board.

Ref. No.	Part No.	Description	Remark	Ref. No.	Part No.	Description	Remark
*	A-3016-595-A	MAIN BOARD, COMPLETE *****		C701	1-163-035-00	CERAMIC CHIP	0.047uF 50V
		< CAPACITOR >		C702	1-163-038-00	CERAMIC CHIP	0.1uF 25V
C101	1-163-017-00	CERAMIC CHIP	0.0047uF 5%	C703	1-163-009-11	CERAMIC CHIP	0.001uF 10% 50V
C102	1-163-035-00	CERAMIC CHIP	0.047uF 50V	C704	1 104-368-21	ELECT	10uF 20% 16V
C103	1-104-390-21	ELECT	1uF 20% 50V			< DIODE >	
C104	1-104-401-21	ELECT	100uF 20% 4V	D101	8-719-941-23	DIODE DA204U	
C105	1-163-038-00	CERAMIC CHIP	0.1uF 25V	D102	8-719-941-23	DIODE DA204U	
C106	1-163-017-00	CERAMIC CHIP	0.0047uF 5%	D103	8-719-988-62	DIODE 1SS355	
C107	1-164-232-11	CERAMIC CHIP	0.01uF 50V	D401	8-719-026-62	DIODE GL8PR42 (REC/BATT)	
C108	1-163-034-00	CERAMIC CHIP	0.033uF 50V			< IC >	
C109	1-163-038-00	CERAMIC CHIP	0.1uF 25V	IC101	8-759-701-02	IC NJM2073M	
C110	1-104-401-21	ELECT	100uF 20% 4V	IC601	8-759-804-43	IC LA5521M	
C111	1-104-401-21	ELECT	100uF 20% 4V	IC701	8-759-701-51	IC NJM2072M	
C112	1-163-038-00	CERAMIC CHIP	0.1uF 25V			< JACK >	
C113	1-104-368-21	ELECT	10uF 20% 16V	J101	1-766-156-11	JACK (MIC)	
C114	1-163-009-11	CERAMIC CHIP	0.001uF 10% 50V	J102	1-580-372-41	JACK, DC (POLARITY UNIFIED TYPE) (DC IN 3V)	
C115	1-163-986-00	CERAMIC CHIP	0.027uF 10% 25V	J103	1-766-156-11	JACK (EAR)	
C116	1-163-038-00	CERAMIC CHIP	0.1uF 25V			< JUMPER RESISTOR >	
C118	1-104-402-21	ELECT	220uF 20% 4V	JR1	1-216-295-00	METAL GLAZE	0 5% 1/10W
C119	1-163-009-11	CERAMIC CHIP	0.001uF 10% 50V	JR2	1-216-296-00	METAL GLAZE	0 5% 1/8W
C121	1-164-232-11	CERAMIC CHIP	0.01uF 50V	JR4	1-216-295-00	METAL GLAZE	0 5% 1/10W
C122	1-163-009-11	CERAMIC CHIP	0.001uF 10% 50V	JR5	1-216-295-00	METAL GLAZE	0 5% 1/10W
C123	1-164-005-11	CERAMIC CHIP	0.47uF 25V	JR6	1-216-295-00	METAL GLAZE	0 5% 1/10W
C124	1-104-355-21	ELECT	22uF 20% 6.3V	JR7	1-216-296-00	METAL GLAZE	0 5% 1/8W
C125	1-164-346-11	CERAMIC CHIP	1uF 16V	JR8	1-216-296-00	METAL GLAZE	0 5% 1/8W
C126	1-164-346-11	CERAMIC CHIP	1uF 16V	JR9	1-216-295-00	METAL GLAZE	0 5% 1/10W
C127	1-163-037-11	CERAMIC CHIP	0.022uF 10% 25V	JR10	1-216-296-00	METAL GLAZE	0 5% 1/8W
C128	1-164-232-11	CERAMIC CHIP	0.01uF 50V	JR11	1-216-296-00	METAL GLAZE	0 5% 1/8W
C301	1-163-989-11	CERAMIC CHIP	0.033uF 10% 25V	JR13	1-216-296-00	METAL GLAZE	0 5% 1/8W
C302	1-164-344-11	CERAMIC CHIP	0.068uF 10% 25V	JR14	1-216-295-00	METAL GLAZE	0 5% 1/10W
C303	1-163-038-00	CERAMIC CHIP	0.1uF 25V	JR15	1-216-295-00	METAL GLAZE	0 5% 1/10W
C304	1-135-151-21	TANTALUM CHIP	4.7uF 20% 4V	JR16	1-216-295-00	METAL GLAZE	0 5% 1/10W
C401	1-163-038-00	CERAMIC CHIP	0.1uF 25V	JR17	1-216-296-00	METAL GLAZE	0 5% 1/8W
C402	1-163-017-00	CERAMIC CHIP	0.0047uF 5% 50V				
C601	1-104-355-21	ELECT	22uF 20% 6.3V				
C602	1-104-390-21	ELECT	1uF 20% 50V				
C603	1-104-355-21	ELECT	22uF 20% 6.3V				

**MAIN**

Ref. No.	Part No.	Description	Remark
< TRANSISTOR >			
Q101	8-729-016-80	TRANSISTOR 2SC2412KL-N-T146-R	
Q102	8-729-920-74	TRANSISTOR 2SC2412K-QR	
Q103	8-729-920-74	TRANSISTOR 2SC2412K-QR	
Q301	8-729-402-81	TRANSISTOR XN4501	
Q302	8-729-429-71	TRANSISTOR XN4314	
Q303	8-729-402-32	TRANSISTOR 2SD1819A-R	
Q304	8-729-402-93	TRANSISTOR UN5214-IX	
Q401	8-729-402-84	TRANSISTOR XN4601	
Q601	8-729-420-20	TRANSISTOR XN4312	
Q701	8-729-402-96	TRANSISTOR UN5114	
Q702	8-729-402-32	TRANSISTOR 2SD1819A-R	
Q703	8-729-402-32	TRANSISTOR 2SD1819A-R	
< RESISTOR >			
R101	1-249-416-11	CARBON 820 5% 1/4W F	
R102	1-249-425-11	CARBON 4.7K 5% 1/4W F	
R103	1-249-413-11	CARBON 470 5% 1/4W F	
R104	1-216-077-00	METAL CHIP 15K 5% 1/10W	
R105	1-216-053-00	METAL CHIP 1.5K 5% 1/10W	
R106	1-249-437-11	CARBON 47K 5% 1/4W	
R107	1-249-437-11	CARBON 47K 5% 1/4W	
R108	1-249-422-11	CARBON 2.7K 5% 1/4W F	
R109	1-249-399-11	CARBON 33 5% 1/4W F	
R110	1-249-423-11	CARBON 3.3K 5% 1/4W F	
R111	1-249-415-11	CARBON 680 5% 1/4W F	
R112	1-216-053-00	METAL CHIP 1.5K 5% 1/10W	
R113	1-249-437-11	CARBON 47K 5% 1/4W	
R114	1-249-429-11	CARBON 10K 5% 1/4W	
R115	1-216-033-00	METAL CHIP 220 5% 1/10W	
R116	1-216-033-00	METAL CHIP 220 5% 1/10W	
R117	1-216-308-00	METAL CHIP 4.7 5% 1/10W	
R118	1-216-009-00	METAL CHIP 22 5% 1/10W	
R119	1-216-017-00	METAL CHIP 47 5% 1/10W	
R120	1-249-408-11	CARBON 180 5% 1/4W F	
R121	1-249-417-11	CARBON 1K 5% 1/4W F	
R122	1-249-421-11	CARBON 2.2K 5% 1/4W F	
R123	1-247-807-31	CARBON 100 5% 1/4W	
R124	1-216-053-00	METAL CHIP 1.5K 5% 1/10W	
R125	1-249-425-11	CARBON 4.7K 5% 1/4W F	
R126	1-249-422-11	CARBON 2.7K 5% 1/4W F	
R127	1-249-423-11	CARBON 3.3K 5% 1/4W F	
R128	1-216-113-00	METAL CHIP 470K 5% 1/10W	
R129	1-216-021-00	METAL CHIP 68 5% 1/10W	
R301	1-216-061-00	METAL CHIP 3.3K 5% 1/10W	
R302	1-216-097-00	METAL CHIP 100K 5% 1/10W	

Ref. No.	Part No.	Description	Remark
R303	1-216-097-00	METAL CHIP 100K 5% 1/10W	
R304	1-216-061-00	METAL CHIP 3.3K 5% 1/10W	
R305	1-216-089-91	METAL GLAZE 47K 5% 1/10W	
R306	1-247-807-31	CARBON 100 5% 1/4W	
R307	1-216-113-00	METAL CHIP 470K 5% 1/10W	
R308	1-216-129-00	METAL CHIP 2.2M 5% 1/10W	
R309	1-249-429-11	CARBON 10K 5% 1/4W	
R401	1-249-429-11	CARBON 10K 5% 1/4W	
R402	1-216-268-00	METAL GLAZE 820K 5% 1/8W	
R403	1-249-408-11	CARBON 180 5% 1/4W F	
R404	1-249-422-11	CARBON 2.7K 5% 1/4W F	
R602	1-216-069-00	METAL CHIP 6.8K 5% 1/10W	
R603	1-216-065-00	METAL CHIP 4.7K 5% 1/10W	
R604	1-216-079-00	METAL CHIP 18K 5% 1/10W	
R605	1-216-073-00	METAL CHIP 10K 5% 1/10W	
R701	1-249-429-11	CARBON 10K 5% 1/4W	
R702	1-216-051-00	METAL CHIP 1.2K 5% 1/10W	
R703	1-216-063-00	METAL CHIP 3.9K 5% 1/10W	
R704	1-249-429-11	CARBON 10K 5% 1/4W	
R705	1-249-437-11	CARBON 47K 5% 1/4W	
R706	1-249-425-11	CARBON 4.7K 5% 1/4W F	
R707	1-249-429-11	CARBON 10K 5% 1/4W	
R708	1-249-429-11	CARBON 10K 5% 1/4W	
< VARIABLE RESISTOR >			
RV101	1-237-73(-21	RES. VAR. CARBON 10K (VOL)	
RV601	1-238-663-11	RES. ADJ. CARBON 4.7K	
RV602	1-223-586-11	RES. ADJ. CARBON 10K	
< SWITCH >			
S101	1-572-688-11	SWITCH, PUSH (1 KEY) (POWER)	
S102	1-692-999-11	SWITCH, SLIDE (REC/PB)	
S103	1-571-275-31	SWITCH, SLIDE (PAUSE)	
S104	1-571-478-11	SWITCH, SLIDE (TAPE SPEED)	
S105	1-571-506-41	SWITCH, SLIDE (VOR)	
S106	1-571-275-31	SWITCH, SLIDE (FAST PB)	
S107	1-572-688-11	SWITCH, PUSH (1 KEY) (FF)	
S301	1-692-088-51	SWITCH, TACTILE (CLE)	
< POSITIVE THERMISTOR >			
THP601	1-808-956-11	THERMISTOR, POSITIVE	
THP602	1-809-757-11	THERMISTOR, POSITIVE	
*****			

Ref. No.	Part No.	Description	Remark
----------	----------	-------------	--------

MISCELLANEOUS  
\*\*\*\*\*

HCB901	1-500-135-11	HEAD, MAGNETIC (REC/PB/ERASE)	
M901	1-698-384-11	MOTOR, DC	
MIC901	1-542-136-11	MICROPHONE, ELECTRET CONDENSER	
SP901	1-544-657-12	SPEAKER (3.6CM)	

\*\*\*\*\*

ACCESSORIES & PACKING MATERIALS  
\*\*\*\*\*

	1-504-116-11	EARPHONE (Tourist)	
	2-283-326-11	LABEL, CAUTION (Tourist)	
	3-758-981-51	MANUAL, INSTRUCTION (JAPANESE, ENGLISH) (Tourist)	
	3-758-981-61	MANUAL, INSTRUCTION (ENGLISH, FRENCH, SPANISH, PORTUGUESE) (AEP, E)	
	3-758-981-71	MANUAL, INSTRUCTION (GERMAN, DUTCH, SWEDISH, ITALIAN) (AEP)	
	3-758-981-81	MANUAL, INSTRUCTION (ENGLISH) (US, Canadian)	
	3-758-981-91	MANUAL, INSTRUCTION (FRENCH) (Canadian)	
	3-914-895-01	CASE, CARRYING (AEP, Tourist)	
*	3-916-688-11	CUSHION (EXCEPT Tourist)	
*	3-916-712-01	INDIVIDUAL CARTON (Canadian)	
*	3-916-714-01	INDIVIDUAL CARTON (AEP)	
*	3-916-716-01	INDIVIDUAL CARTON (E)	
*	3-917-712-01	INDIVIDUAL CARTON (Tourist)	

